

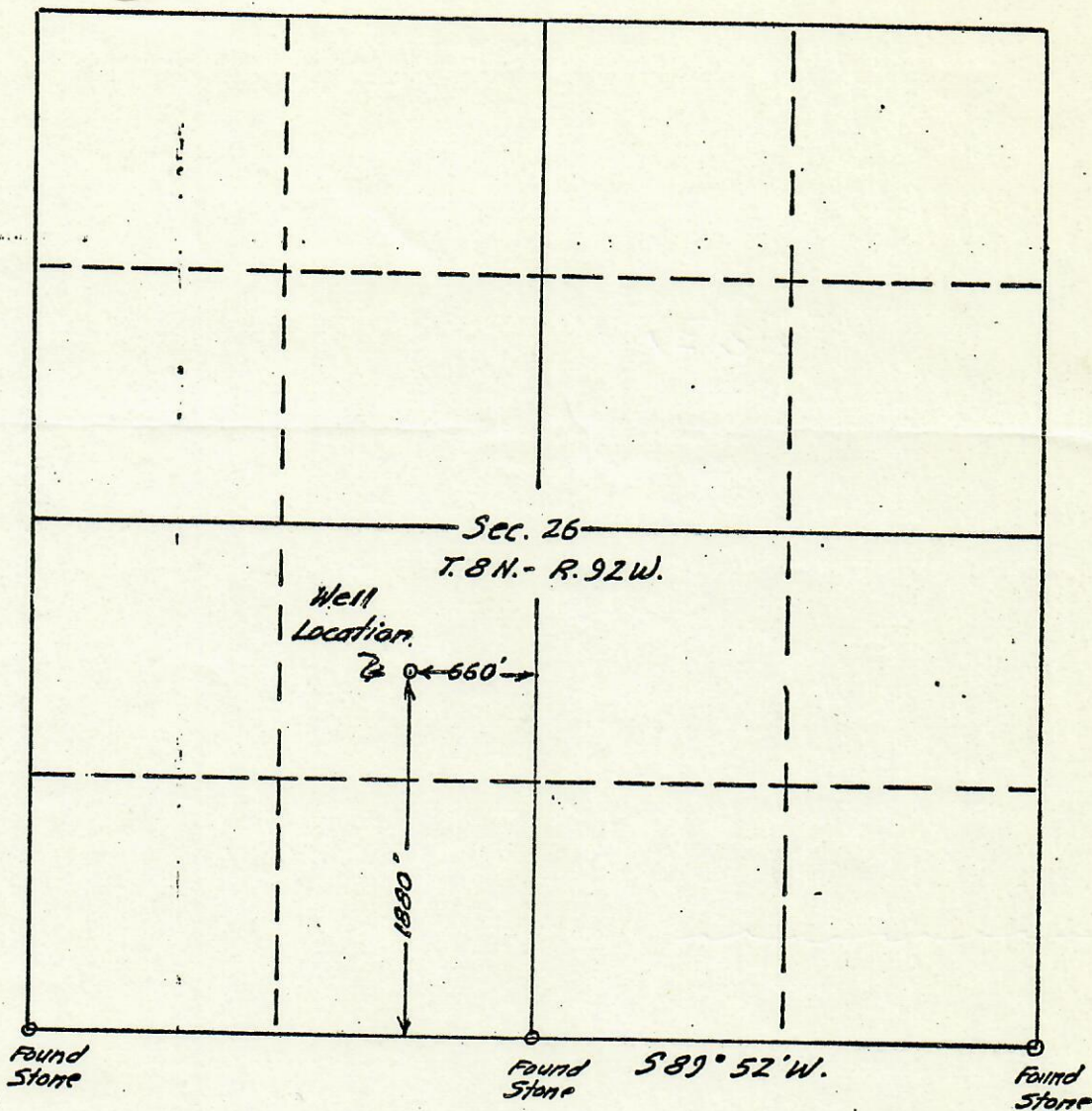
MAP OF RAINBOW RESOURCES WELL LOCATION



RECEIVED

NOV 5 1976

COLO. OIL & GAS CONS. COMM.



ground elevation: 6822'

Scale: 1 in = 1000 ft.

I hereby certify that on the 24th day of June, 1976; I made a survey of a well location for Rainbow Resources Located 660 feet west of the center line and 1880' north of the south line of Section 26, T. 8 N., R. 92 W., 6th P.M., Moffat County, Colorado, and that this plat is a true and accurate description of said survey.

[Signature]
Registered Land Surveyor No. 4946

