



FORM F-106



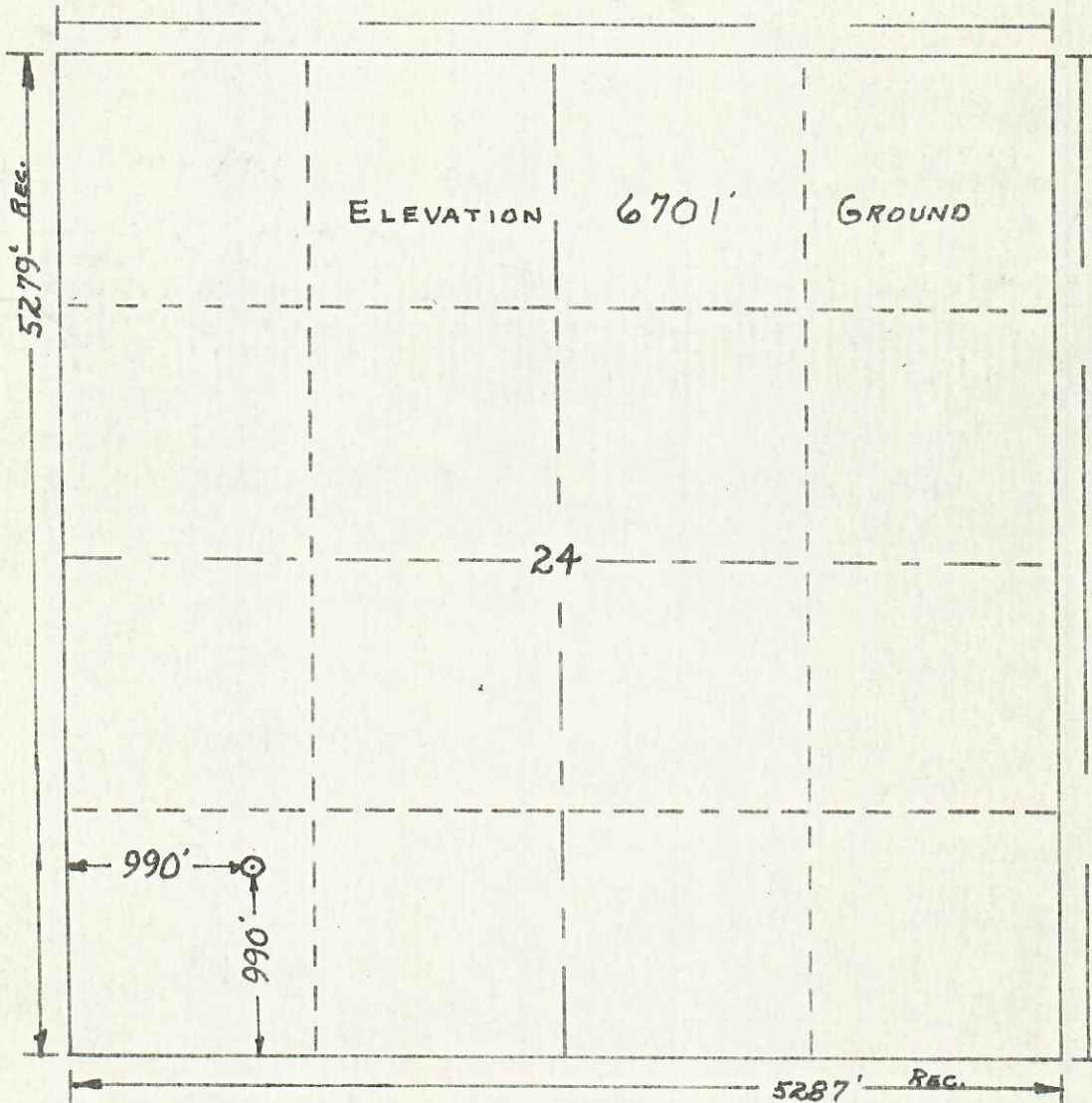
00237837

RECEIVED

OCT 27 1980

COLO. OIL &amp; GAS CONS. COMM.

R. 91 W.

T.  
8  
N.

Scale... 1" = 1000'

Powers Elevation Company, Inc. of Denver, Colorado  
has in accordance with a request from DON LINDSLEY  
for ANADARKO PRODUCTION COMPANY  
determined the location of B#1 COTTONWOOD GULCH - SMITH  
to be 990' FS & 990' FW Section 24 Township 8 N  
Range 91 W OF THE SIXTH PRINCIPAL Meridian  
MOFFAT County, COLORADO

I hereby certify that this plat is an  
accurate representation of a correct  
survey showing the location of  
#1 COTTONWOOD GULCH - SMITH

Date: 7-17-79

T. Wilson  
Licensed Land Surveyor No. 2188  
State of COLORADO