

**BERRY PETROLEUM COMPANY LLC**  
**CHEVRON L04 696**  
**Location # 335597**



**BERRY PETROLEUM COMPANY LLC**  
**CHEVRON L04 696**  
**Location # 335597**



**Access road shows signs of lack of stabilization  
BMP's in some areas (rutting is present).**



**Access road shows signs of lack of stabilization  
BMP's in some areas (rutting is present).**

**BERRY PETROLEUM COMPANY LLC  
CHEVRON L04 696  
Location # 335597**



**Location shows signs of lack of stabilization  
BMP's in some areas (rutting is present).**



**Location shows signs of lack of stabilization  
BMP's in some areas (rutting is present).**



**BERRY PETROLEUM COMPANY LLC**  
**CHEVRON L04 696**  
**Location # 335597**



**Location shows signs of lack of stabilization  
BMP's in some areas (rutting is present).**



**Location shows signs of lack of stabilization  
BMP's in some areas (rutting is present).**

**BERRY PETROLEUM COMPANY LLC**  
**CHEVRON L04 696**  
**Location # 335597**



**N39.55096 W108.12064**

**Water not draining off road into culvert or ditch.**



**Access road shows signs of lack of stabilization  
BMP's in some areas (rutting is present).**

**BERRY PETROLEUM COMPANY LLC**  
**CHEVRON L04 696**  
**Location # 335597**



**N39.55334 W108.11990**

**Erosion damage from culvert outlet. Access road shows signs of lack of stabilization BMP's in some areas (rutting is present).**



**N39.55334 W108.11990**

**Erosion damage from culvert outlet.**



**BERRY PETROLEUM COMPANY LLC**  
**CHEVRON L04 696**  
**Location # 335597**



**Erosion damage from culvert outlet.**

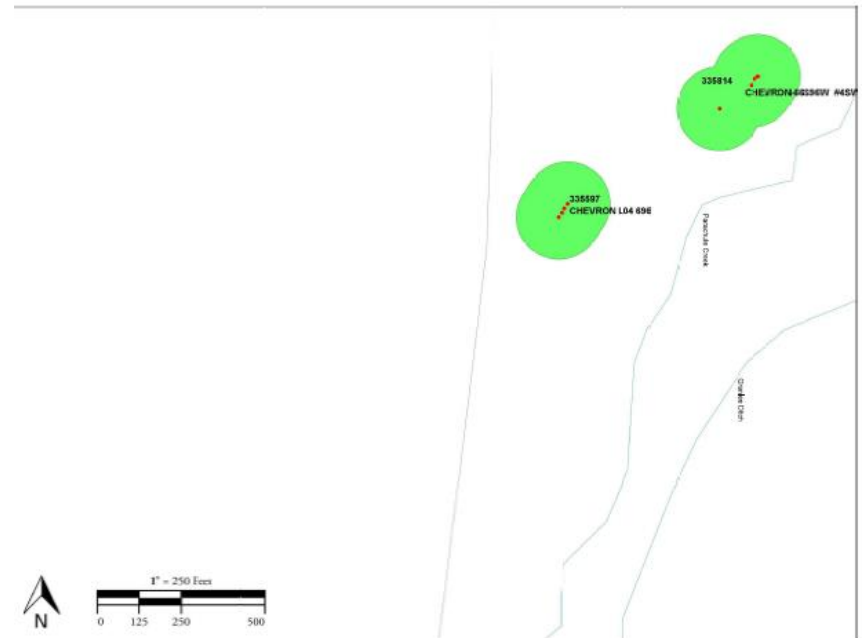
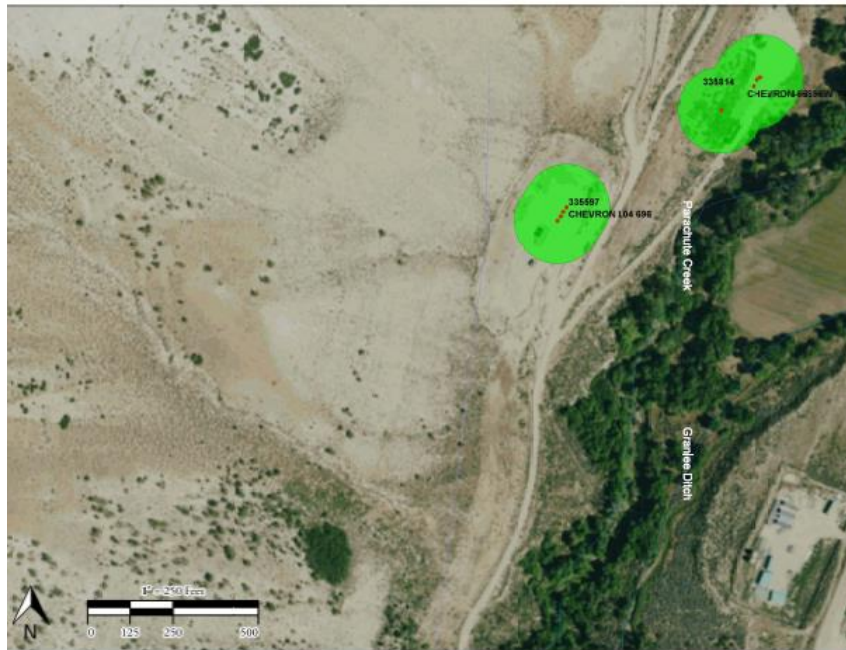


**Erosion has exposed pipe line.**

# BERRY PETROLEUM COMPANY LLC

## CHEVRON L04 696

### Location # 335597

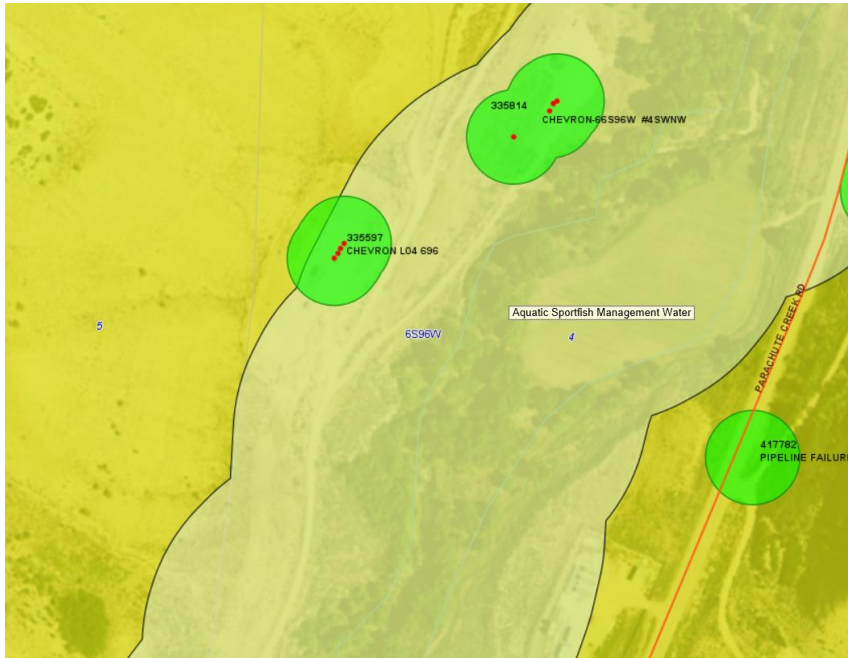




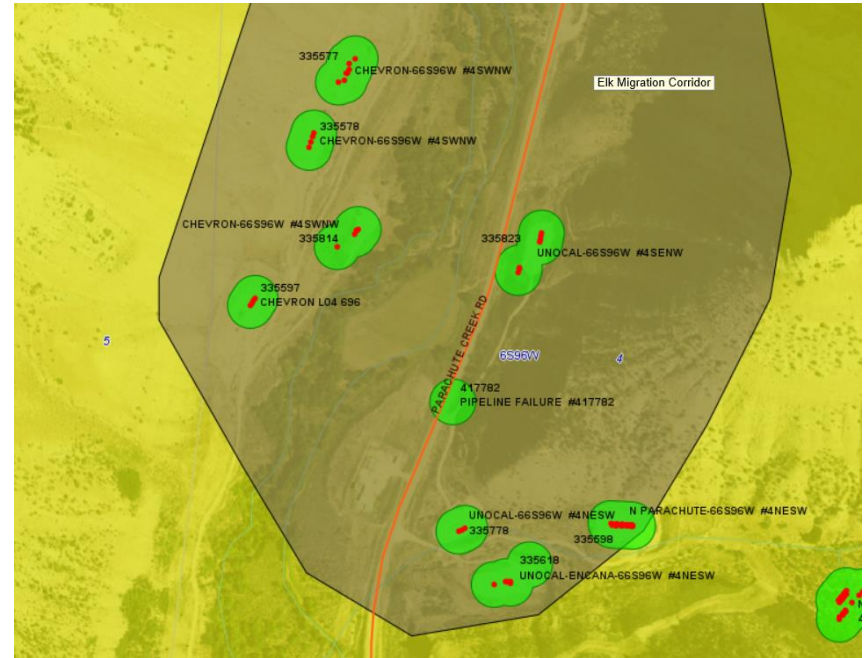
# BERRY PETROLEUM COMPANY LLC

## CHEVRON L04 696

### Location # 335597



**High Priority Habitat;  
Aquatic Sportfish Management Waters**



**Elk Migration Corridor**