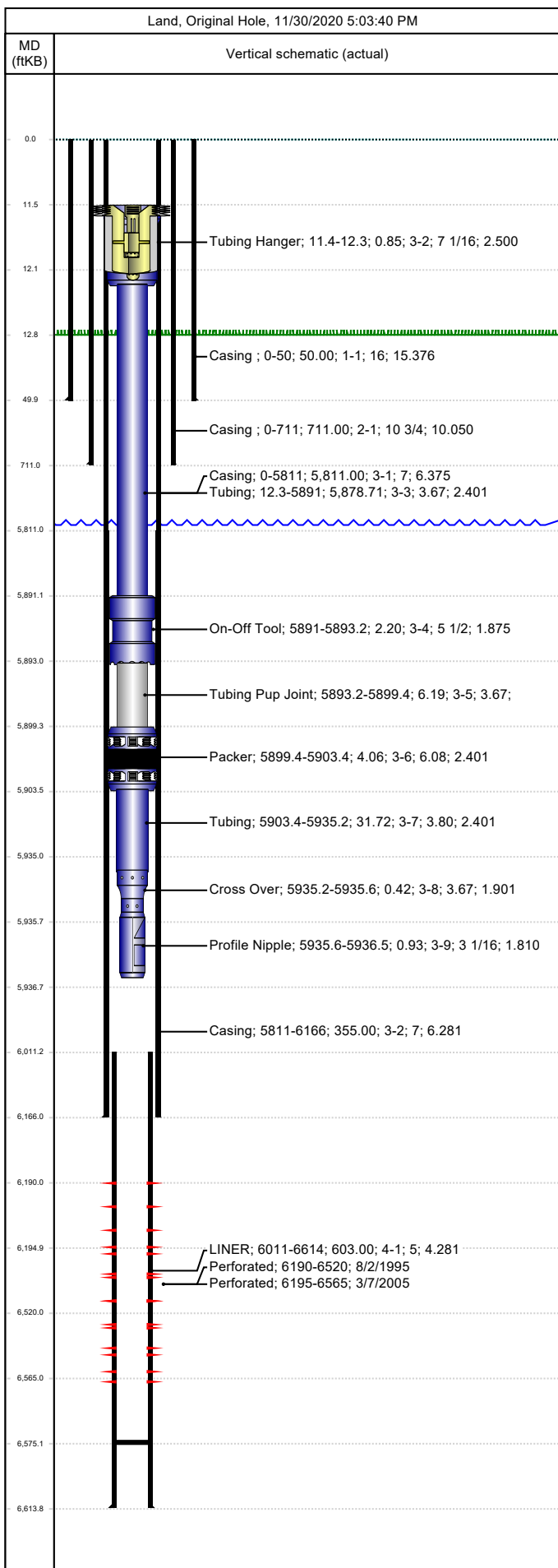




Wellbore Schematic

Well Name McLaughlin AC 21	Lease McLaughlin, A.C. Unit	Field Name Rangely	Business Unit Mid-Continent
-------------------------------	--------------------------------	-----------------------	--------------------------------



Job Details								
Job Category			Start Date		Rig/Unit End Date			
Abandon			7/16/2009		7/17/2009			
Casing Strings								
Csg Des	OD (in)	Wt/Len (lb/ft)	Grade	Top Thread	Set Depth (MD) (ftKB)			
Conductor	16	55.00	F-25	SHRTRND	50			
Surface	10 3/4	40.50	J-55	SHRTRND	711			
Production Casing	7	23.00	J-55		6166			
Production Liner 1	5	18.00	L-80		6614			
Tubing Strings								
Tubing - Production set at 5,936.5ftKB on 7/16/2009 18:00								
Tubing Description			Run Date		String Length (ft)		Set Depth (MD) (ftKB)	
Tubing - Production			7/16/2009		5,923.58		5,936.5	
Item Des		Jts	OD (in)	Wt (lb/ft)	Grade	Len (ft)	Btm (ftKB)	
COMPRESSION						-1.50	11.4	
Tubing Hanger			7 1/16			0.85	12.3	
Tubing		182	3.668	6.50	J-55	5,878.71	5,891.0	
On-Off Tool			5 1/2			2.20	5,893.2	
Tubing Pup Joint			3.668	6.50	J-55	6.19	5,899.4	
Packer			6.078			4.06	5,903.4	
Tubing		1	3.801	6.50	TK-15/FGW	31.72	5,935.2	
Cross Over			3.668			0.42	5,935.6	
Profile Nipple			3 1/16			0.93	5,936.5	
LANDED @							5,936.5	
Perforations								
Date	Top (ftKB)	Btm (ftKB)	Shot Dens (shots/ft)	Entered Shot Total	Linked Zone			
8/2/1995	6,190.0	6,520.0						
3/7/2005	6,195.0	6,565.0						
Other Strings								
Run Date	Pull Date	Set Depth (ftKB)	Com					