

Bison Oil & Gas II, LLC

**WELD COUNTY, COLORADO (NAD 83)
HUNT 8-60 17B SWNE SEC. 17 T8N R60W
HUNT 8-60 17B-20-2**

Wellbore #1

Plan: Design #1

Standard Survey Report

10 February, 2021



Project: WELD COUNTY, COLORADO (NAD 83)
Site: HUNT 8-60 17B SWNE SEC. 17 T8N R60W
Well: HUNT 8-60 17B-20-2
Wellbore: Wellbore #1
Design: Design #1

ANNOTATIONS

MD	Inc	Azi	TVD	+N/-S	+E/-W	VSec	Departure	Annotation
800.0	0.00	0.00	800.0	0.0	0.0	0.0	0.0	Start Build 2.00
1092.4	5.85	245.73	1091.9	-6.1	-13.6	6.9	14.9	Start 4721.5 hold at 1092.4 MD
5814.0	5.85	245.73	5788.9	-203.9	-452.2	230.9	496.1	Start Drop -2.00
6106.4	0.00	0.00	6080.8	-210.0	-465.8	237.8	511.0	Start Build 15.19
6699.0	90.00	180.00	6458.0	-587.2	-465.8	614.4	888.2	Start DLS 0.00 TFO 89.91
14038.1	90.00	180.32	6458.0	-7926.3	-486.5	7941.3	8227.4	Start 100.2 hold at 14038.1 MD
14138.3	90.00	180.32	6458.0	-8026.5	-487.1	8041.3	8327.6	TD at 14138.3

PROPOSED LOCAL COORDINATES:

SHL: 2363 ft FNL & 2475 ft FEL Sec 17

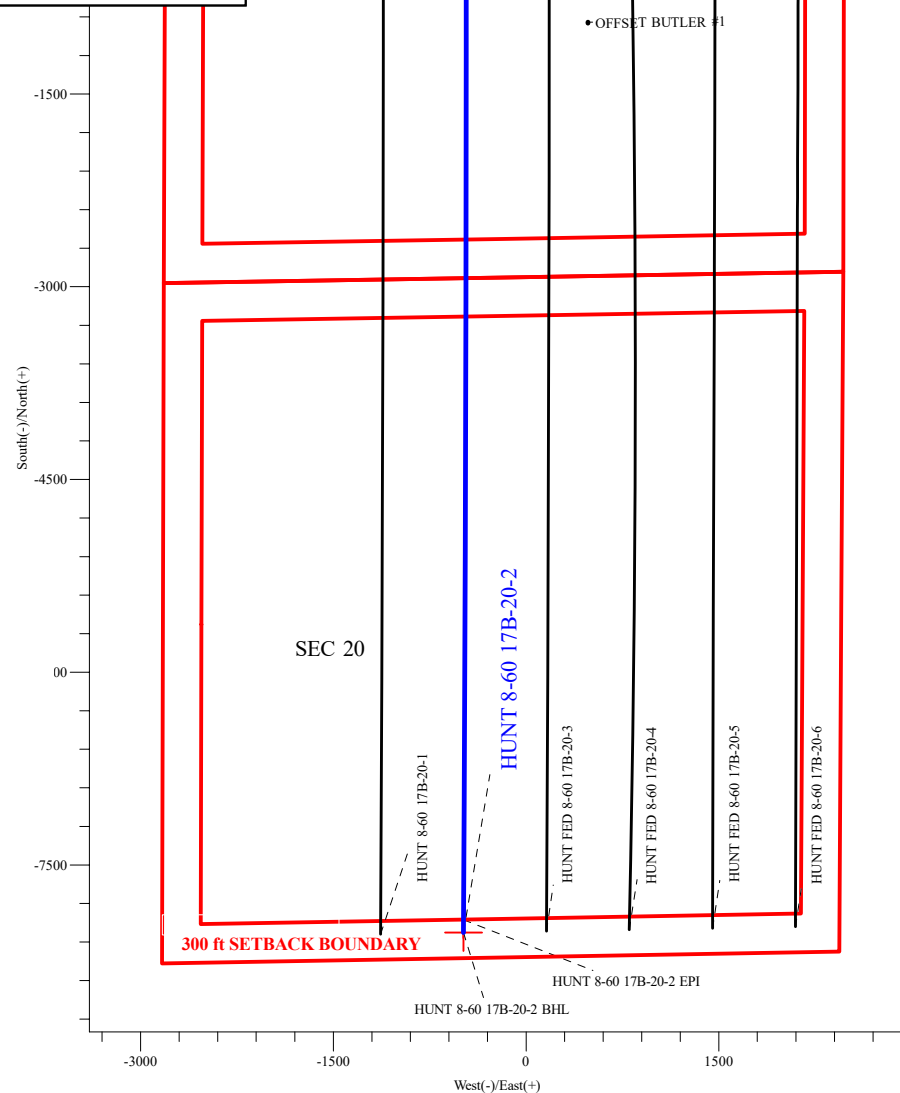
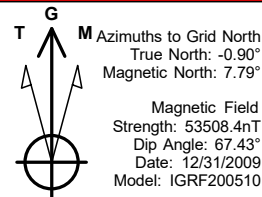
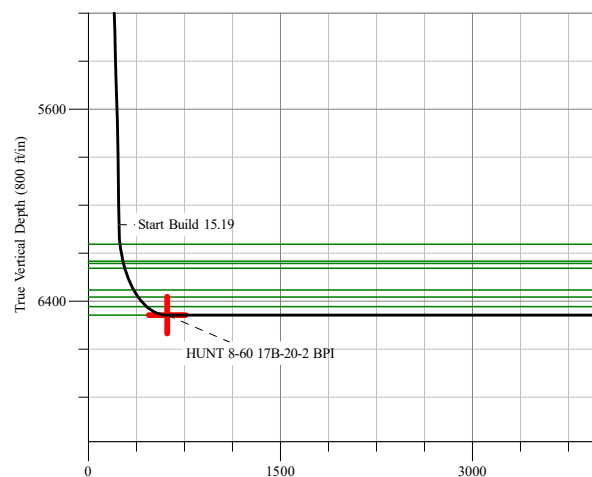
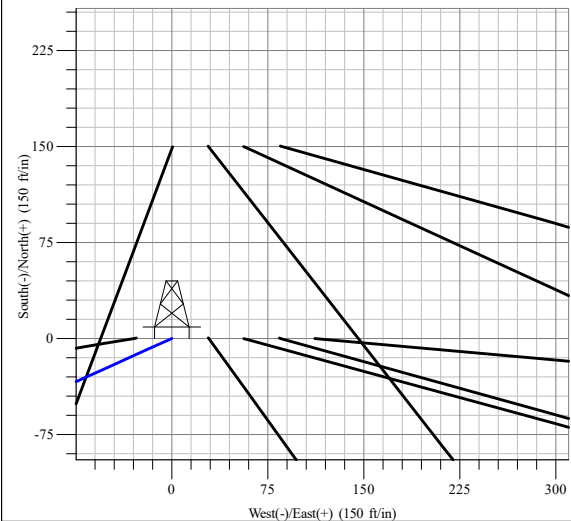
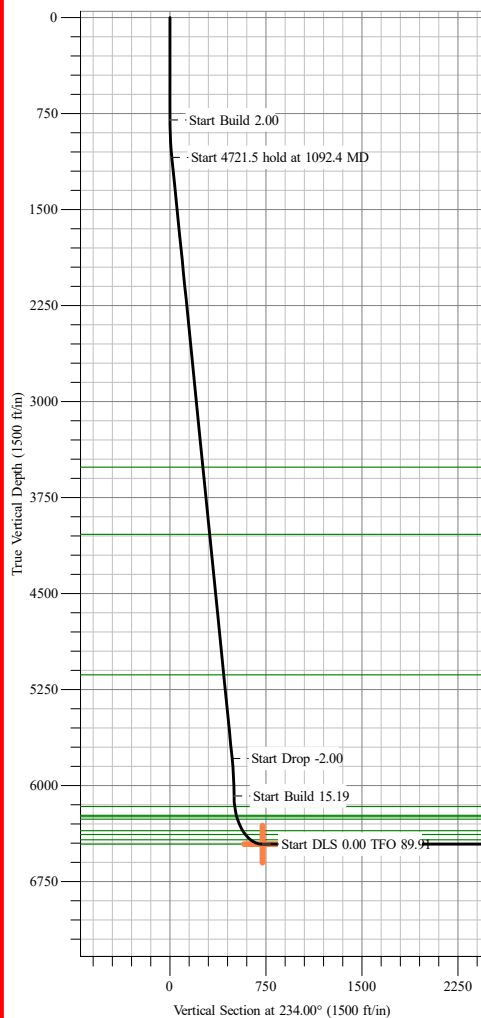
BPI : 2345 ft FSL & 2346 ft FWL Sec 17

EPI: 300 ft FSL & 2346 ft FWL Sec 20

BHL: 200 ft FSL & 2346 ft FWL Sec 20

WELLBORE TARGET DETAILS (LAT/LONG)

Name	TVD	+N/-S	+E/-W	Northing	Easting	Latitude	Longitude
HUNT 8-60 17B-20-2 BPI	6458.0	-589.2	-465.8	453181.44	1031400.99	40° 39' 41.310 N 104° 6' 58.914 W	
HUNT 8-60 17B-20-2 EPI	6458.0	-7926.3	-486.5	450945.06	1031394.69	40° 38' 28.820 N 104° 7' 0.667 W	
HUNT 8-60 17B-20-2 BHL	6458.0	-8026.6	-486.9	450914.52	1031394.57	40° 38' 27.830 N 104° 7' 0.692 W	Point



Vertical Section at 183.47° (1500 ft/in)

Survey Report

Company:	Bison Oil & Gas II, LLC	Local Co-ordinate Reference:	Well HUNT 8-60 17B-20-2
Project:	WELD COUNTY, COLORADO (NAD 83)	TVD Reference:	GL @ 4937.7ft
Site:	HUNT 8-60 17B SWNE SEC. 17 T8N R60W	MD Reference:	GL @ 4937.7ft
Well:	HUNT 8-60 17B-20-2	North Reference:	Grid
Wellbore:	Wellbore #1	Survey Calculation Method:	Minimum Curvature
Design:	Design #1	Database:	EDM 5000.16 Single User Db

Project	WELD COUNTY, COLORADO (NAD 83),		
Map System:	US State Plane 1983	System Datum:	Mean Sea Level
Geo Datum:	North American Datum 1983		
Map Zone:	Colorado Northern Zone		

Site						HUNT 8-60 17B SWNE SEC. 17 T8N R60W											
Site Position:						Northing:			453,564.15 m			Latitude:			40° 39' 48.532 N		
From:			Lat/Long			Easting:			1,041,236.06 m			Longitude:			104° 0' 0.000 W		
Position Uncertainty:			0.0 ft			Slot Radius:			13.200 in								

Well	HUNT 8-60 17B-20-2					
Well Position	+N/-S	0.0 ft	Northing:	453,361.02 m	Latitude:	40° 39' 47.059 N
	+E/-W	0.0 ft	Easting:	1,031,542.98 m	Longitude:	104° 6' 52.751 W
Position Uncertainty		0.0 ft	Wellhead Elevation:	ft	Ground Level:	4,937.7 ft
Grid Convergence:		0.90 °				

Wellbore	Wellbore #1				
Magnetics	Model Name	Sample Date	Declination (°)	Dip Angle (°)	Field Strength (nT)
	IGRF200510	12/31/2009	8.69	67.43	53,508.38287185

Design	Design #1				
Audit Notes:					
Version:	Phase:	PROTOTYPE	Tie On Depth:	0.0	
Vertical Section:	Depth From (TVD) (ft)	+N/-S (ft)	+E/-W (ft)	Direction (°)	
	0.0	0.0	0.0	183.47	

Survey Tool Program	Date	2/1/2021			
From (ft)	To (ft)	Survey (Wellbore)	Tool Name	Description	
0.0	14,138.3	Design #1 (Wellbore #1)	MWD	Fixed:v2:standard declination	

Planned Survey										
Measured Depth (ft)	Inclination (°)	Azimuth (°)	Vertical Depth (ft)	+N/-S (ft)	+E/-W (ft)	Vertical Section (ft)	Dogleg Rate (°/100ft)	Build Rate (°/100ft)	Turn Rate (°/100ft)	
0.0	0.00	0.00	0.0	0.0	0.0	0.0	0.00	0.00	0.00	
100.0	0.00	0.00	100.0	0.0	0.0	0.0	0.00	0.00	0.00	
200.0	0.00	0.00	200.0	0.0	0.0	0.0	0.00	0.00	0.00	
300.0	0.00	0.00	300.0	0.0	0.0	0.0	0.00	0.00	0.00	
400.0	0.00	0.00	400.0	0.0	0.0	0.0	0.00	0.00	0.00	
500.0	0.00	0.00	500.0	0.0	0.0	0.0	0.00	0.00	0.00	
600.0	0.00	0.00	600.0	0.0	0.0	0.0	0.00	0.00	0.00	
700.0	0.00	0.00	700.0	0.0	0.0	0.0	0.00	0.00	0.00	
800.0	0.00	0.00	800.0	0.0	0.0	0.0	0.00	0.00	0.00	
Start Build 2.00										

Survey Report

Company:	Bison Oil & Gas II, LLC	Local Co-ordinate Reference:	Well HUNT 8-60 17B-20-2
Project:	WELD COUNTY, COLORADO (NAD 83)	TVD Reference:	GL @ 4937.7ft
Site:	HUNT 8-60 17B SWNE SEC. 17 T8N R60W	MD Reference:	GL @ 4937.7ft
Well:	HUNT 8-60 17B-20-2	North Reference:	Grid
Wellbore:	Wellbore #1	Survey Calculation Method:	Minimum Curvature
Design:	Design #1	Database:	EDM 5000.16 Single User Db

Planned Survey

Measured Depth (ft)	Inclination (°)	Azimuth (°)	Vertical Depth (ft)	+N/-S (ft)	+E/-W (ft)	Vertical Section (ft)	Dogleg Rate (°/100ft)	Build Rate (°/100ft)	Turn Rate (°/100ft)
900.0	2.00	245.73	900.0	-0.7	-1.6	0.8	2.00	2.00	0.00
1,000.0	4.00	245.73	999.8	-2.9	-6.4	3.2	2.00	2.00	0.00
1,092.4	5.85	245.73	1,091.9	-6.1	-13.6	6.9	2.00	2.00	0.00
Start 4721.5 hold at 1092.4 MD									
1,100.0	5.85	245.73	1,099.5	-6.4	-14.3	7.3	0.00	0.00	0.00
1,200.0	5.85	245.73	1,198.9	-10.6	-23.6	12.0	0.00	0.00	0.00
1,300.0	5.85	245.73	1,298.4	-14.8	-32.9	16.8	0.00	0.00	0.00
1,400.0	5.85	245.73	1,397.9	-19.0	-42.2	21.5	0.00	0.00	0.00
1,500.0	5.85	245.73	1,497.4	-23.2	-51.5	26.3	0.00	0.00	0.00
1,600.0	5.85	245.73	1,596.9	-27.4	-60.7	31.0	0.00	0.00	0.00
1,700.0	5.85	245.73	1,696.3	-31.6	-70.0	35.8	0.00	0.00	0.00
1,800.0	5.85	245.73	1,795.8	-35.8	-79.3	40.5	0.00	0.00	0.00
1,900.0	5.85	245.73	1,895.3	-40.0	-88.6	45.2	0.00	0.00	0.00
2,000.0	5.85	245.73	1,994.8	-44.1	-97.9	50.0	0.00	0.00	0.00
2,100.0	5.85	245.73	2,094.2	-48.3	-107.2	54.7	0.00	0.00	0.00
2,200.0	5.85	245.73	2,193.7	-52.5	-116.5	59.5	0.00	0.00	0.00
2,300.0	5.85	245.73	2,293.2	-56.7	-125.8	64.2	0.00	0.00	0.00
2,400.0	5.85	245.73	2,392.7	-60.9	-135.1	69.0	0.00	0.00	0.00
2,500.0	5.85	245.73	2,492.2	-65.1	-144.4	73.7	0.00	0.00	0.00
2,600.0	5.85	245.73	2,591.6	-69.3	-153.6	78.4	0.00	0.00	0.00
2,700.0	5.85	245.73	2,691.1	-73.5	-162.9	83.2	0.00	0.00	0.00
2,800.0	5.85	245.73	2,790.6	-77.6	-172.2	87.9	0.00	0.00	0.00
2,900.0	5.85	245.73	2,890.1	-81.8	-181.5	92.7	0.00	0.00	0.00
3,000.0	5.85	245.73	2,989.6	-86.0	-190.8	97.4	0.00	0.00	0.00
3,100.0	5.85	245.73	3,089.0	-90.2	-200.1	102.2	0.00	0.00	0.00
3,200.0	5.85	245.73	3,188.5	-94.4	-209.4	106.9	0.00	0.00	0.00
3,300.0	5.85	245.73	3,288.0	-98.6	-218.7	111.6	0.00	0.00	0.00
3,400.0	5.85	245.73	3,387.5	-102.8	-228.0	116.4	0.00	0.00	0.00
3,500.0	5.85	245.73	3,487.0	-107.0	-237.3	121.1	0.00	0.00	0.00
3,600.0	5.85	245.73	3,586.4	-111.1	-246.6	125.9	0.00	0.00	0.00
3,700.0	5.85	245.73	3,685.9	-115.3	-255.8	130.6	0.00	0.00	0.00
3,800.0	5.85	245.73	3,785.4	-119.5	-265.1	135.4	0.00	0.00	0.00
3,900.0	5.85	245.73	3,884.9	-123.7	-274.4	140.1	0.00	0.00	0.00
4,000.0	5.85	245.73	3,984.4	-127.9	-283.7	144.9	0.00	0.00	0.00
4,100.0	5.85	245.73	4,083.8	-132.1	-293.0	149.6	0.00	0.00	0.00
4,200.0	5.85	245.73	4,183.3	-136.3	-302.3	154.3	0.00	0.00	0.00
4,300.0	5.85	245.73	4,282.8	-140.5	-311.6	159.1	0.00	0.00	0.00
4,400.0	5.85	245.73	4,382.3	-144.7	-320.9	163.8	0.00	0.00	0.00
4,500.0	5.85	245.73	4,481.8	-148.8	-330.2	168.6	0.00	0.00	0.00
4,600.0	5.85	245.73	4,581.2	-153.0	-339.5	173.3	0.00	0.00	0.00
4,700.0	5.85	245.73	4,680.7	-157.2	-348.7	178.1	0.00	0.00	0.00
4,800.0	5.85	245.73	4,780.2	-161.4	-358.0	182.8	0.00	0.00	0.00
4,900.0	5.85	245.73	4,879.7	-165.6	-367.3	187.5	0.00	0.00	0.00

Survey Report

Company:	Bison Oil & Gas II, LLC	Local Co-ordinate Reference:	Well HUNT 8-60 17B-20-2
Project:	WELD COUNTY, COLORADO (NAD 83)	TVD Reference:	GL @ 4937.7ft
Site:	HUNT 8-60 17B SWNE SEC. 17 T8N R60W	MD Reference:	GL @ 4937.7ft
Well:	HUNT 8-60 17B-20-2	North Reference:	Grid
Wellbore:	Wellbore #1	Survey Calculation Method:	Minimum Curvature
Design:	Design #1	Database:	EDM 5000.16 Single User Db

Planned Survey

Measured Depth (ft)	Inclination (°)	Azimuth (°)	Vertical Depth (ft)	+N/-S (ft)	+E/-W (ft)	Vertical Section (ft)	Dogleg Rate (°/100ft)	Build Rate (°/100ft)	Turn Rate (°/100ft)
5,000.0	5.85	245.73	4,979.2	-169.8	-376.6	192.3	0.00	0.00	0.00
5,100.0	5.85	245.73	5,078.6	-174.0	-385.9	197.0	0.00	0.00	0.00
5,200.0	5.85	245.73	5,178.1	-178.2	-395.2	201.8	0.00	0.00	0.00
5,300.0	5.85	245.73	5,277.6	-182.3	-404.5	206.5	0.00	0.00	0.00
5,400.0	5.85	245.73	5,377.1	-186.5	-413.8	211.3	0.00	0.00	0.00
5,500.0	5.85	245.73	5,476.5	-190.7	-423.1	216.0	0.00	0.00	0.00
5,600.0	5.85	245.73	5,576.0	-194.9	-432.4	220.7	0.00	0.00	0.00
5,700.0	5.85	245.73	5,675.5	-199.1	-441.6	225.5	0.00	0.00	0.00
5,800.0	5.85	245.73	5,775.0	-203.3	-450.9	230.2	0.00	0.00	0.00
5,814.0	5.85	245.73	5,788.9	-203.9	-452.2	230.9	0.00	0.00	0.00
Start Drop -2.00									
5,900.0	4.13	245.73	5,874.6	-206.9	-459.0	234.4	2.00	-2.00	0.00
6,000.0	2.13	245.73	5,974.4	-209.2	-464.0	236.9	2.00	-2.00	0.00
6,100.0	0.13	245.73	6,074.4	-210.0	-465.8	237.8	2.00	-2.00	0.00
6,106.4	0.00	0.00	6,080.8	-210.0	-465.8	237.8	2.00	-2.00	1,786.87
Start Build 15.19									
6,200.0	14.22	180.00	6,173.4	-221.6	-465.8	249.4	15.19	15.19	-192.30
6,300.0	29.40	180.00	6,266.0	-258.6	-465.8	286.3	15.19	15.19	0.00
6,400.0	44.59	180.00	6,345.6	-318.6	-465.8	346.2	15.19	15.19	0.00
6,500.0	59.78	180.00	6,406.8	-397.4	-465.8	424.9	15.19	15.19	0.00
6,600.0	74.97	180.00	6,445.1	-489.4	-465.8	516.7	15.19	15.19	0.00
6,699.0	90.00	180.00	6,458.0	-587.2	-465.8	614.4	15.19	15.19	0.00
Start DLS 0.00 TFO 89.91									
6,700.0	90.00	180.00	6,458.0	-588.3	-465.8	615.4	0.00	0.00	0.00
6,700.9	90.00	180.00	6,458.0	-589.2	-465.8	616.3	0.00	0.00	0.00
HUNT 8-60 17B-20-2 BPI									
6,800.0	90.00	180.00	6,458.0	-688.3	-465.8	715.2	0.00	0.00	0.00
6,900.0	90.00	180.01	6,458.0	-788.3	-465.8	815.0	0.00	0.00	0.00
7,000.0	90.00	180.01	6,458.0	-888.3	-465.9	914.9	0.00	0.00	0.00
7,100.0	90.00	180.02	6,458.0	-988.3	-465.9	1,014.7	0.00	0.00	0.00
7,200.0	90.00	180.02	6,458.0	-1,088.3	-465.9	1,114.5	0.00	0.00	0.00
7,300.0	90.00	180.03	6,458.0	-1,188.3	-466.0	1,214.3	0.00	0.00	0.00
7,400.0	90.00	180.03	6,458.0	-1,288.3	-466.0	1,314.1	0.00	0.00	0.00
7,500.0	90.00	180.04	6,458.0	-1,388.3	-466.1	1,414.0	0.00	0.00	0.00
7,600.0	90.00	180.04	6,458.0	-1,488.3	-466.1	1,513.8	0.00	0.00	0.00
7,700.0	90.00	180.04	6,458.0	-1,588.3	-466.2	1,613.6	0.00	0.00	0.00
7,800.0	90.00	180.05	6,458.0	-1,688.3	-466.3	1,713.4	0.00	0.00	0.00
7,900.0	90.00	180.05	6,458.0	-1,788.3	-466.4	1,813.2	0.00	0.00	0.00
8,000.0	90.00	180.06	6,458.0	-1,888.3	-466.5	1,913.1	0.00	0.00	0.00
8,100.0	90.00	180.06	6,458.0	-1,988.3	-466.6	2,012.9	0.00	0.00	0.00
8,200.0	90.00	180.07	6,458.0	-2,088.3	-466.7	2,112.7	0.00	0.00	0.00
8,300.0	90.00	180.07	6,458.0	-2,188.3	-466.8	2,212.5	0.00	0.00	0.00
8,400.0	90.00	180.07	6,458.0	-2,288.3	-466.9	2,312.4	0.00	0.00	0.00
8,500.0	90.00	180.08	6,458.0	-2,388.3	-467.1	2,412.2	0.00	0.00	0.00

Survey Report

Company:	Bison Oil & Gas II, LLC	Local Co-ordinate Reference:	Well HUNT 8-60 17B-20-2
Project:	WELD COUNTY, COLORADO (NAD 83)	TVD Reference:	GL @ 4937.7ft
Site:	HUNT 8-60 17B SWNE SEC. 17 T8N R60W	MD Reference:	GL @ 4937.7ft
Well:	HUNT 8-60 17B-20-2	North Reference:	Grid
Wellbore:	Wellbore #1	Survey Calculation Method:	Minimum Curvature
Design:	Design #1	Database:	EDM 5000.16 Single User Db

Planned Survey

Measured Depth (ft)	Inclination (°)	Azimuth (°)	Vertical Depth (ft)	+N/-S (ft)	+E/-W (ft)	Vertical Section (ft)	Dogleg Rate (°/100ft)	Build Rate (°/100ft)	Turn Rate (°/100ft)
8,600.0	90.00	180.08	6,458.0	-2,488.3	-467.2	2,512.0	0.00	0.00	0.00
8,700.0	90.00	180.09	6,458.0	-2,588.3	-467.4	2,611.8	0.00	0.00	0.00
8,800.0	90.00	180.09	6,458.0	-2,688.3	-467.5	2,711.7	0.00	0.00	0.00
8,900.0	90.00	180.10	6,458.0	-2,788.3	-467.7	2,811.5	0.00	0.00	0.00
9,000.0	90.00	180.10	6,458.0	-2,888.3	-467.9	2,911.3	0.00	0.00	0.00
9,100.0	90.00	180.11	6,458.0	-2,988.3	-468.0	3,011.1	0.00	0.00	0.00
9,200.0	90.00	180.11	6,458.0	-3,088.3	-468.2	3,111.0	0.00	0.00	0.00
9,300.0	90.00	180.11	6,458.0	-3,188.3	-468.4	3,210.8	0.00	0.00	0.00
9,400.0	90.00	180.12	6,458.0	-3,288.3	-468.6	3,310.6	0.00	0.00	0.00
9,500.0	90.00	180.12	6,458.0	-3,388.3	-468.8	3,410.4	0.00	0.00	0.00
9,600.0	90.00	180.13	6,458.0	-3,488.3	-469.1	3,510.3	0.00	0.00	0.00
9,700.0	90.00	180.13	6,458.0	-3,588.3	-469.3	3,610.1	0.00	0.00	0.00
9,800.0	90.00	180.14	6,458.0	-3,688.3	-469.5	3,709.9	0.00	0.00	0.00
9,900.0	90.00	180.14	6,458.0	-3,788.3	-469.8	3,809.8	0.00	0.00	0.00
10,000.0	90.00	180.15	6,458.0	-3,888.3	-470.0	3,909.6	0.00	0.00	0.00
10,100.0	90.00	180.15	6,458.0	-3,988.3	-470.3	4,009.4	0.00	0.00	0.00
10,200.0	90.00	180.15	6,458.0	-4,088.3	-470.5	4,109.3	0.00	0.00	0.00
10,300.0	90.00	180.16	6,458.0	-4,188.3	-470.8	4,209.1	0.00	0.00	0.00
10,400.0	90.00	180.16	6,458.0	-4,288.3	-471.1	4,308.9	0.00	0.00	0.00
10,500.0	90.00	180.17	6,458.0	-4,388.3	-471.4	4,408.8	0.00	0.00	0.00
10,600.0	90.00	180.17	6,458.0	-4,488.3	-471.7	4,508.6	0.00	0.00	0.00
10,700.0	90.00	180.18	6,458.0	-4,588.3	-472.0	4,608.4	0.00	0.00	0.00
10,800.0	90.00	180.18	6,458.0	-4,688.3	-472.3	4,708.3	0.00	0.00	0.00
10,900.0	90.00	180.18	6,458.0	-4,788.3	-472.6	4,808.1	0.00	0.00	0.00
11,000.0	90.00	180.19	6,458.0	-4,888.3	-472.9	4,907.9	0.00	0.00	0.00
11,100.0	90.00	180.19	6,458.0	-4,988.3	-473.3	5,007.8	0.00	0.00	0.00
11,200.0	90.00	180.20	6,458.0	-5,088.3	-473.6	5,107.6	0.00	0.00	0.00
11,300.0	90.00	180.20	6,458.0	-5,188.3	-473.9	5,207.4	0.00	0.00	0.00
11,400.0	90.00	180.21	6,458.0	-5,288.3	-474.3	5,307.3	0.00	0.00	0.00
11,500.0	90.00	180.21	6,458.0	-5,388.3	-474.7	5,407.1	0.00	0.00	0.00
11,600.0	90.00	180.22	6,458.0	-5,488.3	-475.0	5,507.0	0.00	0.00	0.00
11,700.0	90.00	180.22	6,458.0	-5,588.3	-475.4	5,606.8	0.00	0.00	0.00
11,800.0	90.00	180.22	6,458.0	-5,688.3	-475.8	5,706.6	0.00	0.00	0.00
11,900.0	90.00	180.23	6,458.0	-5,788.3	-476.2	5,806.5	0.00	0.00	0.00
12,000.0	90.00	180.23	6,458.0	-5,888.3	-476.6	5,906.3	0.00	0.00	0.00
12,100.0	90.00	180.24	6,458.0	-5,988.3	-477.0	6,006.2	0.00	0.00	0.00
12,200.0	90.00	180.24	6,458.0	-6,088.3	-477.4	6,106.0	0.00	0.00	0.00
12,300.0	90.00	180.25	6,458.0	-6,188.3	-477.9	6,205.8	0.00	0.00	0.00
12,400.0	90.00	180.25	6,458.0	-6,288.3	-478.3	6,305.7	0.00	0.00	0.00
12,500.0	90.00	180.26	6,458.0	-6,388.3	-478.7	6,405.5	0.00	0.00	0.00
12,600.0	90.00	180.26	6,458.0	-6,488.3	-479.2	6,505.4	0.00	0.00	0.00
12,700.0	90.00	180.26	6,458.0	-6,588.3	-479.6	6,605.2	0.00	0.00	0.00
12,800.0	90.00	180.27	6,458.0	-6,688.3	-480.1	6,705.1	0.00	0.00	0.00
12,900.0	90.00	180.27	6,458.0	-6,788.3	-480.6	6,804.9	0.00	0.00	0.00

Survey Report

Company:	Bison Oil & Gas II, LLC	Local Co-ordinate Reference:	Well HUNT 8-60 17B-20-2
Project:	WELD COUNTY, COLORADO (NAD 83)	TVD Reference:	GL @ 4937.7ft
Site:	HUNT 8-60 17B SWNE SEC. 17 T8N R60W	MD Reference:	GL @ 4937.7ft
Well:	HUNT 8-60 17B-20-2	North Reference:	Grid
Wellbore:	Wellbore #1	Survey Calculation Method:	Minimum Curvature
Design:	Design #1	Database:	EDM 5000.16 Single User Db

Planned Survey

Measured Depth (ft)	Inclination (°)	Azimuth (°)	Vertical Depth (ft)	+N/-S (ft)	+E/-W (ft)	Vertical Section (ft)	Dogleg Rate (°/100ft)	Build Rate (°/100ft)	Turn Rate (°/100ft)
13,000.0	90.00	180.28	6,458.0	-6,888.2	-481.1	6,904.7	0.00	0.00	0.00
13,100.0	90.00	180.28	6,458.0	-6,988.2	-481.6	7,004.6	0.00	0.00	0.00
13,200.0	90.00	180.29	6,458.0	-7,088.2	-482.0	7,104.4	0.00	0.00	0.00
13,300.0	90.00	180.29	6,458.0	-7,188.2	-482.5	7,204.3	0.00	0.00	0.00
13,400.0	90.00	180.29	6,458.0	-7,288.2	-483.1	7,304.1	0.00	0.00	0.00
13,500.0	90.00	180.30	6,458.0	-7,388.2	-483.6	7,404.0	0.00	0.00	0.00
13,600.0	90.00	180.30	6,458.0	-7,488.2	-484.1	7,503.8	0.00	0.00	0.00
13,700.0	90.00	180.31	6,458.0	-7,588.2	-484.6	7,603.7	0.00	0.00	0.00
13,800.0	90.00	180.31	6,458.0	-7,688.2	-485.2	7,703.5	0.00	0.00	0.00
13,900.0	90.00	180.32	6,458.0	-7,788.2	-485.7	7,803.4	0.00	0.00	0.00
14,000.0	90.00	180.32	6,458.0	-7,888.2	-486.3	7,903.2	0.00	0.00	0.00
14,038.1	90.00	180.32	6,458.0	-7,926.3	-486.5	7,941.3	0.00	0.00	0.00
Start 100.2 hold at 14038.1 MD - HUNT 8-60 17B-20-2 EPI									
14,100.0	90.00	180.32	6,458.0	-7,988.2	-486.8	8,003.1	0.00	0.00	0.00
14,138.3	90.00	180.32	6,458.0	-8,026.5	-487.1	8,041.3	0.00	0.00	0.00
TD at 14138.3 - HUNT 8-60 17B-20-2 BHL									

Design Targets

Target Name - hit/miss target - Shape	Dip Angle (°)	Dip Dir. (°)	TVD (ft)	+N/-S (ft)	+E/-W (ft)	Northing (m)	Easting (m)	Latitude	Longitude
HUNT 8-60 17B-20-2 - plan hits target center - Point	0.00	359.11	6,458.0	-589.2	-465.8	453,181.44	1,031,400.99	40° 39' 41.310 N	104° 6' 58.914 W
HUNT 8-60 17B-20-2 - plan misses target center by 0.2ft at 14138.3ft MD (6458.0 TVD, -8026.5 N, -487.1 E) - Point	0.00	359.11	6,458.0	-8,026.6	-486.9	450,914.52	1,031,394.58	40° 38' 27.830 N	104° 7' 0.692 W
HUNT 8-60 17B-20-2 - plan hits target center - Point	0.00	359.11	6,458.0	-7,926.3	-486.5	450,945.06	1,031,394.69	40° 38' 28.820 N	104° 7' 0.667 W

Survey Report

Company:	Bison Oil & Gas II, LLC	Local Co-ordinate Reference:	Well HUNT 8-60 17B-20-2
Project:	WELD COUNTY, COLORADO (NAD 83)	TVD Reference:	GL @ 4937.7ft
Site:	HUNT 8-60 17B SWNE SEC. 17 T8N R60W	MD Reference:	GL @ 4937.7ft
Well:	HUNT 8-60 17B-20-2	North Reference:	Grid
Wellbore:	Wellbore #1	Survey Calculation Method:	Minimum Curvature
Design:	Design #1	Database:	EDM 5000.16 Single User Db

Formations						
Measured Depth (ft)	Vertical Depth (ft)	Name	Lithology	Dip (°)	Dip Direction (°)	
3,524.2	3,511.0	Parkman				
4,051.9	4,036.0	Sussex				
5,155.7	5,134.0	Shannon				
6,189.3	6,163.0	Sharon Springs Shale				
6,263.1	6,233.0	Niobrara Formation				
6,274.1	6,243.0	Niobrara A Chalk				
6,296.6	6,263.0	Niobrara A Landing Point				
6,410.5	6,353.0	Niobrara B Chalk				
6,456.9	6,383.0	Niobrara B Landing Point				
6,535.1	6,423.0	Niobrara C Chalk				
6,694.0	6,458.0	Niobrara C Landing Point				

Plan Annotations					
Measured Depth (ft)	Vertical Depth (ft)	Local Coordinates			
		+N/-S (ft)	+E/-W (ft)	Comment	
800	800	0	0	Start Build 2.00	
1092	1092	-6	-14	Start 4721.5 hold at 1092.4 MD	
5814	5789	-204	-452	Start Drop -2.00	
6106	6081	-210	-466	Start Build 15.19	
6699	6458	-587	-466	Start DLS 0.00 TFO 89.91	
14,038	6458	-7926	-486	Start 100.2 hold at 14038.1 MD	
14,138	6458	-8027	-487	TD at 14138.3	