

Bison Oil & Gas II, LLC

**WELD COUNTY, COLORADO (NAD 83)
HUNT 8-60 17B SWNE SEC. 17 T8N R60W
HUNT FED 8-60 17B-20-3**

Wellbore #1

Plan: Design #1

Standard Survey Report

10 February, 2021



Project: WELD COUNTY, COLORADO (NAD 83)
Site: HUNT 8-60 17B SWNE SEC. 17 T8N R60W
Well: HUNT FED 8-60 17B-20-3
Wellbore: Wellbore #1
Design: Design #1

ANNOTATIONS

MD	Inc	Azi	TVD	+N/-S	+E/-W	VSec	Departure	Annotation
800.0	0.00	0.00	800.0	0.0	0.0	0.0	0.0	Start Build 1.50
1001.0	3.01	144.21	1000.9	-4.3	3.1	4.3	5.3	Start 4721.6 hold at 1001.0 MD
5722.6	3.01	144.21	5715.9	-205.7	148.3	208.1	253.6	Start Drop -1.50
5923.5	0.00	0.00	5916.8	-210.0	151.4	212.4	258.9	Start 100.0 hold at 5923.5 MD
6023.5	0.00	0.00	6016.8	-210.0	151.4	212.4	258.9	Start Build 15.65
6598.7	90.00	180.00	6383.0	-576.2	151.4	578.5	625.0	Start DLS 0.00 TFO 90.17
13938.2	90.00	180.32	6383.0	-7915.6	130.6	7916.7	7964.5	Start 99.8 hold at 13938.2 MD
14038.0	90.00	180.32	6383.0	-8015.5	130.1	8016.5	8064.4	TD at 14038.0

PROPOSED LOCAL COORDINATES:

SHL: 2364 ft FNL & 2447 ft FEL Sec 17

BPI : 2346 ft FSL & 2294 ft FEL Sec 17

EPI: 300 ft FSL & 2280 ft FEL Sec 20

BHL: 200 ft FSL & 2280 ft FEL Sec 20

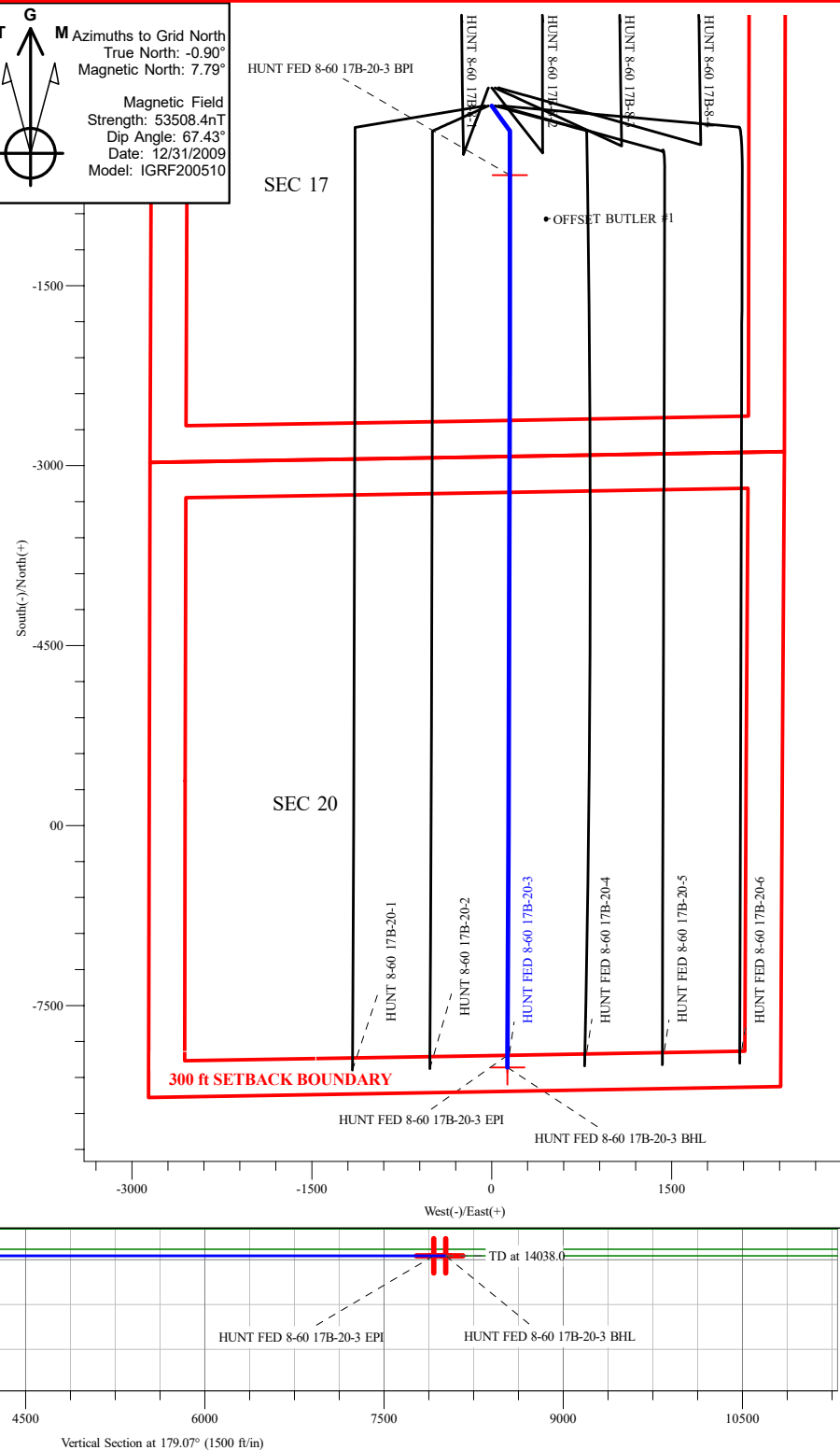
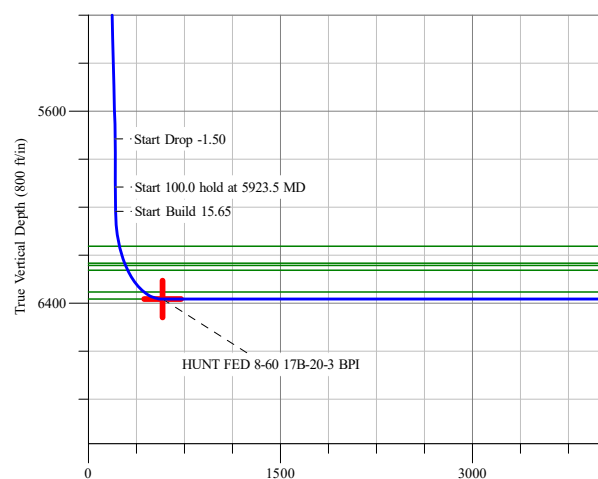
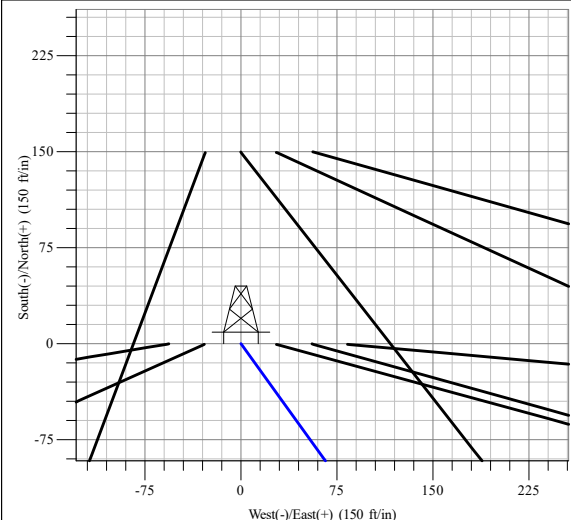
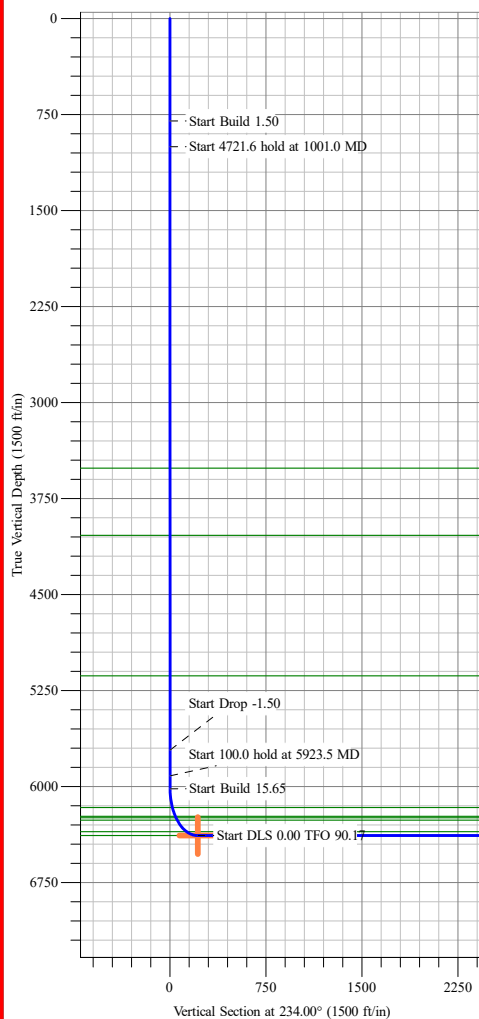


M Azimuths to Grid North
True North: -0.90°
Magnetic North: 7.79°

Magnetic Field
Strength: 53508.4nT
Dip Angle: 67.43°
Date: 12/31/2009
Model: IGRF200510

WELLBORE TARGET DETAILS (LAT/LONG)

Name	TVD	+N/-S	+E/-W	Northing	Easting	Latitude	Longitude
HUNT FED 8-60 17B-20-3 BPI	6383.0	-578.1	151.4	453184.96	1031597.82	40° 39' 41.324 N 104° 6' 50.533 W	
HUNT FED 8-60 17B-20-3 EPI	6383.0	-7915.6	130.6	450948.47	1031591.50	40° 38' 28.831 N 104° 6' 52.290 W	
HUNT FED 8-60 17B-20-3 BHL	6383.0	-8015.5	130.5	450918.04	1031591.46	40° 38' 27.845 N 104° 6' 52.312 W	Point



Survey Report

Company:	Bison Oil & Gas II, LLC	Local Co-ordinate Reference:	Well HUNT FED 8-60 17B-20-3
Project:	WELD COUNTY, COLORADO (NAD 83)	TVD Reference:	GL @ 4938.1ft
Site:	HUNT 8-60 17B SWNE SEC. 17 T8N R60W	MD Reference:	GL @ 4938.1ft
Well:	HUNT FED 8-60 17B-20-3	North Reference:	Grid
Wellbore:	Wellbore #1	Survey Calculation Method:	Minimum Curvature
Design:	Design #1	Database:	EDM 5000.16 Single User Db

Project	WELD COUNTY, COLORADO (NAD 83),		
Map System:	US State Plane 1983	System Datum:	Mean Sea Level
Geo Datum:	North American Datum 1983		
Map Zone:	Colorado Northern Zone		

Site	HUNT 8-60 17B SWNE SEC. 17 T8N R60W		
Site Position:		Northing:	453,564.15 m
From:	Lat/Long	Easting:	1,041,236.06 m
Position Uncertainty:	0.0 ft	Slot Radius:	13.200 in
		Latitude:	40° 39' 48.532 N
		Longitude:	104° 0' 0.000 W

Well	HUNT FED 8-60 17B-20-3		
Well Position	+N/-S	0.0 ft	Northing: 453,361.15 m
	+E/-W	0.0 ft	Easting: 1,031,551.69 m
Position Uncertainty	0.0 ft	Wellhead Elevation:	ft
Grid Convergence:	0.90 °	Ground Level:	4,938.1 ft

Wellbore	Wellbore #1				
Magnetics	Model Name	Sample Date	Declination (°)	Dip Angle (°)	Field Strength (nT)
	IGRF200510	12/31/2009	8.69	67.43	53,508.39003561

Design	Design #1				
Audit Notes:					
Version:	Phase:	PROTOTYPE	Tie On Depth:	0.0	
Vertical Section:	Depth From (TVD) (ft)	+N/-S (ft)	+E/-W (ft)	Direction (°)	
	0.0	0.0	0.0	179.07	

Survey Tool Program	Date	2/1/2021			
From (ft)	To (ft)	Survey (Wellbore)	Tool Name	Description	
0.0	14,038.0	Design #1 (Wellbore #1)	MWD	Fixed:v2:standard declination	

Planned Survey										
Measured Depth (ft)	Inclination (°)	Azimuth (°)	Vertical Depth (ft)	+N/-S (ft)	+E/-W (ft)	Vertical Section (ft)	Dogleg Rate (°/100ft)	Build Rate (°/100ft)	Turn Rate (°/100ft)	
0.0	0.00	0.00	0.0	0.0	0.0	0.0	0.00	0.00	0.00	
100.0	0.00	0.00	100.0	0.0	0.0	0.0	0.00	0.00	0.00	
200.0	0.00	0.00	200.0	0.0	0.0	0.0	0.00	0.00	0.00	
300.0	0.00	0.00	300.0	0.0	0.0	0.0	0.00	0.00	0.00	
400.0	0.00	0.00	400.0	0.0	0.0	0.0	0.00	0.00	0.00	
500.0	0.00	0.00	500.0	0.0	0.0	0.0	0.00	0.00	0.00	
600.0	0.00	0.00	600.0	0.0	0.0	0.0	0.00	0.00	0.00	
700.0	0.00	0.00	700.0	0.0	0.0	0.0	0.00	0.00	0.00	
800.0	0.00	0.00	800.0	0.0	0.0	0.0	0.00	0.00	0.00	
Start Build 1.50										

Survey Report

Company:	Bison Oil & Gas II, LLC	Local Co-ordinate Reference:	Well HUNT FED 8-60 17B-20-3
Project:	WELD COUNTY, COLORADO (NAD 83)	TVD Reference:	GL @ 4938.1ft
Site:	HUNT 8-60 17B SWNE SEC. 17 T8N R60W	MD Reference:	GL @ 4938.1ft
Well:	HUNT FED 8-60 17B-20-3	North Reference:	Grid
Wellbore:	Wellbore #1	Survey Calculation Method:	Minimum Curvature
Design:	Design #1	Database:	EDM 5000.16 Single User Db

Planned Survey									
Measured Depth (ft)	Inclination (°)	Azimuth (°)	Vertical Depth (ft)	+N/-S (ft)	+E/-W (ft)	Vertical Section (ft)	Dogleg Rate (°/100ft)	Build Rate (°/100ft)	Turn Rate (°/100ft)
900.0	1.50	144.21	900.0	-1.1	0.8	1.1	1.50	1.50	0.00
1,000.0	3.00	144.21	999.9	-4.2	3.1	4.3	1.50	1.50	0.00
1,001.0	3.01	144.21	1,000.9	-4.3	3.1	4.3	1.50	1.50	0.00
Start 4721.6 hold at 1001.0 MD									
1,100.0	3.01	144.21	1,099.8	-8.5	6.1	8.6	0.00	0.00	0.00
1,200.0	3.01	144.21	1,199.6	-12.8	9.2	12.9	0.00	0.00	0.00
1,300.0	3.01	144.21	1,299.5	-17.0	12.3	17.2	0.00	0.00	0.00
1,400.0	3.01	144.21	1,399.4	-21.3	15.4	21.6	0.00	0.00	0.00
1,500.0	3.01	144.21	1,499.2	-25.6	18.4	25.9	0.00	0.00	0.00
1,600.0	3.01	144.21	1,599.1	-29.8	21.5	30.2	0.00	0.00	0.00
1,700.0	3.01	144.21	1,698.9	-34.1	24.6	34.5	0.00	0.00	0.00
1,800.0	3.01	144.21	1,798.8	-38.4	27.7	38.8	0.00	0.00	0.00
1,900.0	3.01	144.21	1,898.7	-42.6	30.7	43.1	0.00	0.00	0.00
2,000.0	3.01	144.21	1,998.5	-46.9	33.8	47.4	0.00	0.00	0.00
2,100.0	3.01	144.21	2,098.4	-51.2	36.9	51.8	0.00	0.00	0.00
2,200.0	3.01	144.21	2,198.2	-55.4	40.0	56.1	0.00	0.00	0.00
2,300.0	3.01	144.21	2,298.1	-59.7	43.0	60.4	0.00	0.00	0.00
2,400.0	3.01	144.21	2,398.0	-64.0	46.1	64.7	0.00	0.00	0.00
2,500.0	3.01	144.21	2,497.8	-68.2	49.2	69.0	0.00	0.00	0.00
2,600.0	3.01	144.21	2,597.7	-72.5	52.3	73.3	0.00	0.00	0.00
2,700.0	3.01	144.21	2,697.6	-76.8	55.3	77.7	0.00	0.00	0.00
2,800.0	3.01	144.21	2,797.4	-81.0	58.4	82.0	0.00	0.00	0.00
2,900.0	3.01	144.21	2,897.3	-85.3	61.5	86.3	0.00	0.00	0.00
3,000.0	3.01	144.21	2,997.1	-89.6	64.6	90.6	0.00	0.00	0.00
3,100.0	3.01	144.21	3,097.0	-93.8	67.6	94.9	0.00	0.00	0.00
3,200.0	3.01	144.21	3,196.9	-98.1	70.7	99.2	0.00	0.00	0.00
3,300.0	3.01	144.21	3,296.7	-102.4	73.8	103.5	0.00	0.00	0.00
3,400.0	3.01	144.21	3,396.6	-106.6	76.9	107.9	0.00	0.00	0.00
3,500.0	3.01	144.21	3,496.4	-110.9	79.9	112.2	0.00	0.00	0.00
3,600.0	3.01	144.21	3,596.3	-115.2	83.0	116.5	0.00	0.00	0.00
3,700.0	3.01	144.21	3,696.2	-119.4	86.1	120.8	0.00	0.00	0.00
3,800.0	3.01	144.21	3,796.0	-123.7	89.2	125.1	0.00	0.00	0.00
3,900.0	3.01	144.21	3,895.9	-128.0	92.2	129.4	0.00	0.00	0.00
4,000.0	3.01	144.21	3,995.8	-132.2	95.3	133.8	0.00	0.00	0.00
4,100.0	3.01	144.21	4,095.6	-136.5	98.4	138.1	0.00	0.00	0.00
4,200.0	3.01	144.21	4,195.5	-140.8	101.5	142.4	0.00	0.00	0.00
4,300.0	3.01	144.21	4,295.3	-145.0	104.5	146.7	0.00	0.00	0.00
4,400.0	3.01	144.21	4,395.2	-149.3	107.6	151.0	0.00	0.00	0.00
4,500.0	3.01	144.21	4,495.1	-153.6	110.7	155.3	0.00	0.00	0.00
4,600.0	3.01	144.21	4,594.9	-157.8	113.8	159.6	0.00	0.00	0.00
4,700.0	3.01	144.21	4,694.8	-162.1	116.8	164.0	0.00	0.00	0.00
4,800.0	3.01	144.21	4,794.7	-166.4	119.9	168.3	0.00	0.00	0.00
4,900.0	3.01	144.21	4,894.5	-170.6	123.0	172.6	0.00	0.00	0.00

Survey Report

Company:	Bison Oil & Gas II, LLC	Local Co-ordinate Reference:	Well HUNT FED 8-60 17B-20-3
Project:	WELD COUNTY, COLORADO (NAD 83)	TVD Reference:	GL @ 4938.1ft
Site:	HUNT 8-60 17B SWNE SEC. 17 T8N R60W	MD Reference:	GL @ 4938.1ft
Well:	HUNT FED 8-60 17B-20-3	North Reference:	Grid
Wellbore:	Wellbore #1	Survey Calculation Method:	Minimum Curvature
Design:	Design #1	Database:	EDM 5000.16 Single User Db

Planned Survey

Measured Depth (ft)	Inclination (°)	Azimuth (°)	Vertical Depth (ft)	+N/-S (ft)	+E/-W (ft)	Vertical Section (ft)	Dogleg Rate (°/100ft)	Build Rate (°/100ft)	Turn Rate (°/100ft)
5,000.0	3.01	144.21	4,994.4	-174.9	126.1	176.9	0.00	0.00	0.00
5,100.0	3.01	144.21	5,094.2	-179.2	129.1	181.2	0.00	0.00	0.00
5,200.0	3.01	144.21	5,194.1	-183.4	132.2	185.5	0.00	0.00	0.00
5,300.0	3.01	144.21	5,294.0	-187.7	135.3	189.9	0.00	0.00	0.00
5,400.0	3.01	144.21	5,393.8	-192.0	138.4	194.2	0.00	0.00	0.00
5,500.0	3.01	144.21	5,493.7	-196.2	141.4	198.5	0.00	0.00	0.00
5,600.0	3.01	144.21	5,593.5	-200.5	144.5	202.8	0.00	0.00	0.00
5,700.0	3.01	144.21	5,693.4	-204.8	147.6	207.1	0.00	0.00	0.00
5,722.6	3.01	144.21	5,715.9	-205.7	148.3	208.1	0.00	0.00	0.00
Start Drop -1.50									
5,800.0	1.85	144.21	5,793.3	-208.4	150.2	210.8	1.50	-1.50	0.00
5,900.0	0.35	144.21	5,893.3	-209.9	151.3	212.4	1.50	-1.50	0.00
5,923.5	0.00	0.00	5,916.8	-210.0	151.4	212.4	1.50	-1.50	-613.19
Start 100.0 hold at 5923.5 MD									
6,000.0	0.00	0.00	5,993.3	-210.0	151.4	212.4	0.00	0.00	0.00
6,023.5	0.00	0.00	6,016.8	-210.0	151.4	212.4	0.00	0.00	0.00
Start Build 15.65									
6,100.0	11.97	180.00	6,092.7	-218.0	151.4	220.4	15.65	15.65	0.00
6,200.0	27.62	180.00	6,186.5	-251.7	151.4	254.1	15.65	15.65	0.00
6,300.0	43.26	180.00	6,267.7	-309.5	151.4	311.9	15.65	15.65	0.00
6,400.0	58.91	180.00	6,330.4	-387.1	151.4	389.5	15.65	15.65	0.00
6,500.0	74.56	180.00	6,369.7	-478.7	151.4	481.1	15.65	15.65	0.00
6,598.7	90.00	180.00	6,383.0	-576.2	151.4	578.5	15.65	15.65	0.00
Start DLS 0.00 TFO 90.17									
6,600.0	90.00	180.00	6,383.0	-577.5	151.4	579.9	0.00	0.00	0.00
6,600.6	90.00	180.00	6,383.0	-578.1	151.4	580.4	0.00	0.00	0.00
HUNT FED 8-60 17B-20-3 BPI									
6,700.0	90.00	180.00	6,383.0	-677.5	151.4	679.8	0.00	0.00	0.00
6,800.0	90.00	180.01	6,383.0	-777.5	151.4	779.8	0.00	0.00	0.00
6,900.0	90.00	180.01	6,383.0	-877.5	151.3	879.8	0.00	0.00	0.00
7,000.0	90.00	180.02	6,383.0	-977.5	151.3	979.8	0.00	0.00	0.00
7,100.0	90.00	180.02	6,383.0	-1,077.5	151.3	1,079.8	0.00	0.00	0.00
7,200.0	90.00	180.03	6,383.0	-1,177.5	151.2	1,179.8	0.00	0.00	0.00
7,300.0	90.00	180.03	6,383.0	-1,277.5	151.2	1,279.8	0.00	0.00	0.00
7,400.0	90.00	180.04	6,383.0	-1,377.5	151.1	1,379.8	0.00	0.00	0.00
7,500.0	90.00	180.04	6,383.0	-1,477.5	151.1	1,479.7	0.00	0.00	0.00
7,600.0	90.00	180.04	6,383.0	-1,577.5	151.0	1,579.7	0.00	0.00	0.00
7,700.0	90.00	180.05	6,383.0	-1,677.5	150.9	1,679.7	0.00	0.00	0.00
7,800.0	90.00	180.05	6,383.0	-1,777.5	150.8	1,779.7	0.00	0.00	0.00
7,900.0	90.00	180.06	6,383.0	-1,877.5	150.7	1,879.7	0.00	0.00	0.00
8,000.0	90.00	180.06	6,383.0	-1,977.5	150.6	1,979.7	0.00	0.00	0.00
8,100.0	90.00	180.07	6,383.0	-2,077.5	150.5	2,079.7	0.00	0.00	0.00
8,200.0	90.00	180.07	6,383.0	-2,177.5	150.4	2,179.6	0.00	0.00	0.00
8,300.0	90.00	180.08	6,383.0	-2,277.5	150.3	2,279.6	0.00	0.00	0.00

Survey Report

Company:	Bison Oil & Gas II, LLC	Local Co-ordinate Reference:	Well HUNT FED 8-60 17B-20-3
Project:	WELD COUNTY, COLORADO (NAD 83)	TVD Reference:	GL @ 4938.1ft
Site:	HUNT 8-60 17B SWNE SEC. 17 T8N R60W	MD Reference:	GL @ 4938.1ft
Well:	HUNT FED 8-60 17B-20-3	North Reference:	Grid
Wellbore:	Wellbore #1	Survey Calculation Method:	Minimum Curvature
Design:	Design #1	Database:	EDM 5000.16 Single User Db

Planned Survey

Measured Depth (ft)	Inclination (°)	Azimuth (°)	Vertical Depth (ft)	+N/-S (ft)	+E/-W (ft)	Vertical Section (ft)	Dogleg Rate (°/100ft)	Build Rate (°/100ft)	Turn Rate (°/100ft)
8,400.0	90.00	180.08	6,383.0	-2,377.5	150.1	2,379.6	0.00	0.00	0.00
8,500.0	90.00	180.08	6,383.0	-2,477.5	150.0	2,479.6	0.00	0.00	0.00
8,600.0	90.00	180.09	6,383.0	-2,577.5	149.8	2,579.6	0.00	0.00	0.00
8,700.0	90.00	180.09	6,383.0	-2,677.5	149.7	2,679.6	0.00	0.00	0.00
8,800.0	90.00	180.10	6,383.0	-2,777.5	149.5	2,779.5	0.00	0.00	0.00
8,900.0	90.00	180.10	6,383.0	-2,877.5	149.3	2,879.5	0.00	0.00	0.00
9,000.0	90.00	180.11	6,383.0	-2,977.5	149.2	2,979.5	0.00	0.00	0.00
9,100.0	90.00	180.11	6,383.0	-3,077.5	149.0	3,079.5	0.00	0.00	0.00
9,200.0	90.00	180.11	6,383.0	-3,177.5	148.8	3,179.5	0.00	0.00	0.00
9,300.0	90.00	180.12	6,383.0	-3,277.5	148.6	3,279.5	0.00	0.00	0.00
9,400.0	90.00	180.12	6,383.0	-3,377.5	148.4	3,379.4	0.00	0.00	0.00
9,500.0	90.00	180.13	6,383.0	-3,477.5	148.1	3,479.4	0.00	0.00	0.00
9,600.0	90.00	180.13	6,383.0	-3,577.5	147.9	3,579.4	0.00	0.00	0.00
9,700.0	90.00	180.14	6,383.0	-3,677.5	147.7	3,679.4	0.00	0.00	0.00
9,800.0	90.00	180.14	6,383.0	-3,777.5	147.4	3,779.4	0.00	0.00	0.00
9,900.0	90.00	180.15	6,383.0	-3,877.5	147.2	3,879.4	0.00	0.00	0.00
10,000.0	90.00	180.15	6,383.0	-3,977.5	146.9	3,979.3	0.00	0.00	0.00
10,100.0	90.00	180.15	6,383.0	-4,077.5	146.7	4,079.3	0.00	0.00	0.00
10,200.0	90.00	180.16	6,383.0	-4,177.5	146.4	4,179.3	0.00	0.00	0.00
10,300.0	90.00	180.16	6,383.0	-4,277.5	146.1	4,279.3	0.00	0.00	0.00
10,400.0	90.00	180.17	6,383.0	-4,377.5	145.8	4,379.3	0.00	0.00	0.00
10,500.0	90.00	180.17	6,383.0	-4,477.5	145.5	4,479.2	0.00	0.00	0.00
10,600.0	90.00	180.18	6,383.0	-4,577.5	145.2	4,579.2	0.00	0.00	0.00
10,700.0	90.00	180.18	6,383.0	-4,677.5	144.9	4,679.2	0.00	0.00	0.00
10,800.0	90.00	180.19	6,383.0	-4,777.5	144.6	4,779.2	0.00	0.00	0.00
10,900.0	90.00	180.19	6,383.0	-4,877.5	144.2	4,879.2	0.00	0.00	0.00
11,000.0	90.00	180.19	6,383.0	-4,977.5	143.9	4,979.2	0.00	0.00	0.00
11,100.0	90.00	180.20	6,383.0	-5,077.5	143.6	5,079.1	0.00	0.00	0.00
11,200.0	90.00	180.20	6,383.0	-5,177.5	143.2	5,179.1	0.00	0.00	0.00
11,300.0	90.00	180.21	6,383.0	-5,277.5	142.9	5,279.1	0.00	0.00	0.00
11,400.0	90.00	180.21	6,383.0	-5,377.5	142.5	5,379.1	0.00	0.00	0.00
11,500.0	90.00	180.22	6,383.0	-5,477.5	142.1	5,479.1	0.00	0.00	0.00
11,600.0	90.00	180.22	6,383.0	-5,577.5	141.7	5,579.0	0.00	0.00	0.00
11,700.0	90.00	180.23	6,383.0	-5,677.5	141.3	5,679.0	0.00	0.00	0.00
11,800.0	90.00	180.23	6,383.0	-5,777.5	141.0	5,779.0	0.00	0.00	0.00
11,900.0	90.00	180.23	6,383.0	-5,877.5	140.5	5,879.0	0.00	0.00	0.00
12,000.0	90.00	180.24	6,383.0	-5,977.5	140.1	5,979.0	0.00	0.00	0.00
12,100.0	90.00	180.24	6,383.0	-6,077.5	139.7	6,078.9	0.00	0.00	0.00
12,200.0	90.00	180.25	6,383.0	-6,177.5	139.3	6,178.9	0.00	0.00	0.00
12,300.0	90.00	180.25	6,383.0	-6,277.5	138.9	6,278.9	0.00	0.00	0.00
12,400.0	90.00	180.26	6,383.0	-6,377.5	138.4	6,378.9	0.00	0.00	0.00
12,500.0	90.00	180.26	6,383.0	-6,477.5	138.0	6,478.8	0.00	0.00	0.00
12,600.0	90.00	180.26	6,383.0	-6,577.5	137.5	6,578.8	0.00	0.00	0.00
12,700.0	90.00	180.27	6,383.0	-6,677.5	137.0	6,678.8	0.00	0.00	0.00

Survey Report

Company:	Bison Oil & Gas II, LLC	Local Co-ordinate Reference:	Well HUNT FED 8-60 17B-20-3
Project:	WELD COUNTY, COLORADO (NAD 83)	TVD Reference:	GL @ 4938.1ft
Site:	HUNT 8-60 17B SWNE SEC. 17 T8N R60W	MD Reference:	GL @ 4938.1ft
Well:	HUNT FED 8-60 17B-20-3	North Reference:	Grid
Wellbore:	Wellbore #1	Survey Calculation Method:	Minimum Curvature
Design:	Design #1	Database:	EDM 5000.16 Single User Db

Planned Survey									
Measured Depth (ft)	Inclination (°)	Azimuth (°)	Vertical Depth (ft)	+N/-S (ft)	+E/-W (ft)	Vertical Section (ft)	Dogleg Rate (°/100ft)	Build Rate (°/100ft)	Turn Rate (°/100ft)
12,800.0	90.00	180.27	6,383.0	-6,777.5	136.6	6,778.8	0.00	0.00	0.00
12,900.0	90.00	180.28	6,383.0	-6,877.5	136.1	6,878.8	0.00	0.00	0.00
13,000.0	90.00	180.28	6,383.0	-6,977.5	135.6	6,978.7	0.00	0.00	0.00
13,100.0	90.00	180.29	6,383.0	-7,077.5	135.1	7,078.7	0.00	0.00	0.00
13,200.0	90.00	180.29	6,383.0	-7,177.5	134.6	7,178.7	0.00	0.00	0.00
13,300.0	90.00	180.30	6,383.0	-7,277.5	134.1	7,278.7	0.00	0.00	0.00
13,400.0	90.00	180.30	6,383.0	-7,377.5	133.6	7,378.6	0.00	0.00	0.00
13,500.0	90.00	180.30	6,383.0	-7,477.5	133.0	7,478.6	0.00	0.00	0.00
13,600.0	90.00	180.31	6,383.0	-7,577.4	132.5	7,578.6	0.00	0.00	0.00
13,700.0	90.00	180.31	6,383.0	-7,677.4	131.9	7,678.6	0.00	0.00	0.00
13,800.0	90.00	180.32	6,383.0	-7,777.4	131.4	7,778.6	0.00	0.00	0.00
13,900.0	90.00	180.32	6,383.0	-7,877.4	130.8	7,878.5	0.00	0.00	0.00
13,938.2	90.00	180.32	6,383.0	-7,915.6	130.6	7,916.7	0.00	0.00	0.00
Start 99.8 hold at 13938.2 MD - HUNT FED 8-60 17B-20-3 EPI									
14,000.0	90.00	180.32	6,383.0	-7,977.4	130.3	7,978.5	0.00	0.00	0.00
14,038.0	90.00	180.32	6,383.0	-8,015.5	130.1	8,016.5	0.00	0.00	0.00
TD at 14038.0 - HUNT FED 8-60 17B-20-3 BHL									

Design Targets									
Target Name	Dip Angle (°)	Dip Dir. (°)	TVD (ft)	+N/-S (ft)	+E/-W (ft)	Northing (m)	Easting (m)	Latitude	Longitude
- hit/miss target									
- Shape									
HUNT FED 8-60 17B-	0.00	359.10	6,383.0	-8,015.5	130.5	450,918.04	1,031,591.47	40° 38' 27.845 N	104° 6' 52.312 W
- plan misses target center by 0.5ft at 14038.0ft MD (6383.0 TVD, -8015.5 N, 130.1 E)									
- Point									
HUNT FED 8-60 17B-	0.00	359.10	6,383.0	-7,915.6	130.6	450,948.47	1,031,591.50	40° 38' 28.831 N	104° 6' 52.290 W
- plan hits target center									
- Point									
HUNT FED 8-60 17B-	0.00	359.10	6,383.0	-578.1	151.4	453,184.96	1,031,597.83	40° 39' 41.324 N	104° 6' 50.533 W
- plan misses target center by 0.1ft at 6600.6ft MD (6383.0 TVD, -578.1 N, 151.4 E)									
- Point									

Formations						
Measured Depth (ft)	Vertical Depth (ft)	Name	Lithology	Dip (°)	Dip Direction (°)	
3,514.6	3,511.0	Parkman				
4,040.3	4,036.0	Sussex				
5,139.8	5,134.0	Shannon				
6,173.9	6,163.0	Sharon Springs Shale				
6,254.8	6,233.0	Niobrara Formation				
6,267.4	6,243.0	Niobrara A Chalk				
6,293.6	6,263.0	Niobrara A Landing Point				
6,449.6	6,353.0	Niobrara B Chalk				

Survey Report

Company:	Bison Oil & Gas II, LLC	Local Co-ordinate Reference:	Well HUNT FED 8-60 17B-20-3
Project:	WELD COUNTY, COLORADO (NAD 83)	TVD Reference:	GL @ 4938.1ft
Site:	HUNT 8-60 17B SWNE SEC. 17 T8N R60W	MD Reference:	GL @ 4938.1ft
Well:	HUNT FED 8-60 17B-20-3	North Reference:	Grid
Wellbore:	Wellbore #1	Survey Calculation Method:	Minimum Curvature
Design:	Design #1	Database:	EDM 5000.16 Single User Db

Plan Annotations

Measured Depth (ft)	Vertical Depth (ft)	Local Coordinates		Comment
		+N/-S (ft)	+E/-W (ft)	
800	800	0	0	Start Build 1.50
1001	1001	-4	3	Start 4721.6 hold at 1001.0 MD
5723	5716	-206	148	Start Drop -1.50
5924	5917	-210	151	Start 100.0 hold at 5923.5 MD
6024	6017	-210	151	Start Build 15.65
6599	6383	-576	151	Start DLS 0.00 TFO 90.17
13,938	6383	-7916	131	Start 99.8 hold at 13938.2 MD
14,038	6383	-8015	130	TD at 14038.0