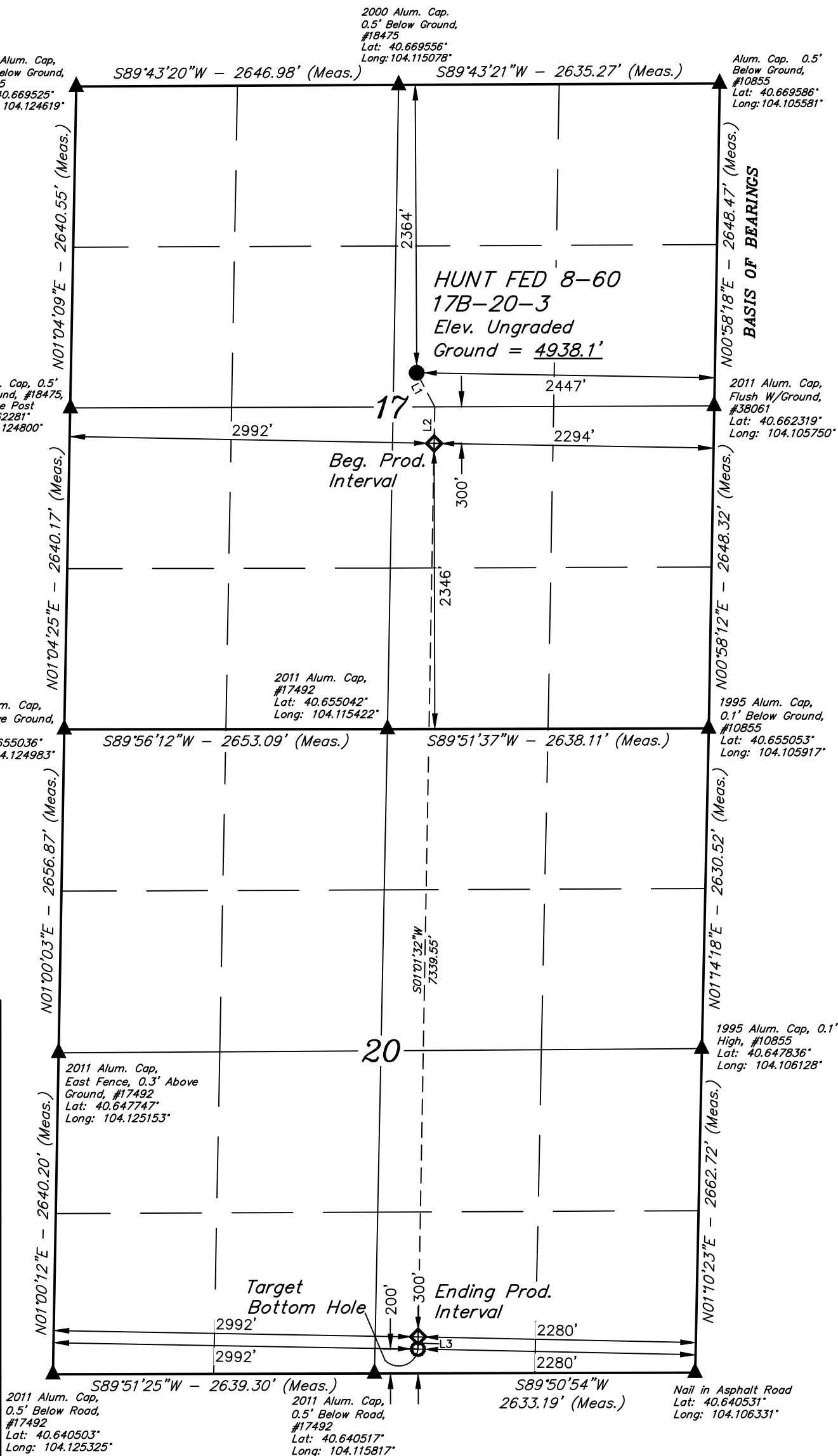


T8N, R60W, 6th P.M.

- NOTE:**
Distances referenced
on plat to section lines
are perpendicular.

LINE TABLE		
LINE	DIRECTION	LENGTH
L1	S27°56'27"E	316.90'
L2	S01°01'32"W	300.07'
L3	S01°00'12"W	100.02'

SURFACE LOCATION 2364' FNL 2447' FEL
NAD 83 (SURFACE LOCATION)
LATITUDE = 40°39'47.06" (40.663072)
LONGITUDE = 104°06'52.38" (104.114550)
NAD 27 (SURFACE LOCATION)
LATITUDE = 40°39'47.11" (40.663086)
LONGITUDE = 104°06'50.57" (104.114047)
STATE PLANE NAD 83 (CO. NORTH)
N: 1487402.08 E: 3384348.84
STATE PLANE NAD 27 (CO. NORTH)
N: 487400.94 E: 2384498.95
BEG. PROD. INTERVAL
2346' FSL 300' FCL 2992' FWL 2294' FEL
NAD 83 (BEG. PROD. INTERVAL)
LATITUDE = 40°39'41.33" (40.661479)
LONGITUDE = 104°06'50.53" (104.114037)
NAD 27 (BEG. PROD. INTERVAL)
LATITUDE = 40°39'41.38" (40.661494)
LONGITUDE = 104°06'48.72" (104.113532)
STATE PLANE NAD 83 (CO. NORTH)
N: 1486824.47' E: 3384500.64'
STATE PLANE NAD 27 (CO. NORTH)
N: 486823.34' E: 2384650.76'
ENDING PROD. INTERVAL
300' FSL 2992' FWL 2280' FEL
NAD 83 (ENDING PROD. INTERVAL)
LATITUDE = 40°38'28.83" (40.641342)
LONGITUDE = 104°06'52.29" (104.114525)
NAD 27 (ENDING PROD. INTERVAL)
LATITUDE = 40°38'28.88" (40.641356)
LONGITUDE = 104°06'50.47" (104.114020)
STATE PLANE NAD 83 (CO. NORTH)
N: 1479486.84' E: 3384479.88'
STATE PLANE NAD 27 (CO. NORTH)
N: 479485.84' E: 2384630.11'
TARGET BOTTOM HOLE
200' FSL 2992' FWL 2280' FEL
NAD 83 (TARGET BOTTOM HOLE)
LATITUDE = 40°38'27.84" (40.641068)
LONGITUDE = 104°06'52.31" (104.114531)
NAD 27 (TARGET BOTTOM HOLE)
LATITUDE = 40°38'27.90" (40.641082)
LONGITUDE = 104°06'50.50" (104.114026)
STATE PLANE NAD 83 (CO. NORTH)
N: 1479386.85' E: 3384479.64'
STATE PLANE NAD 27 (CO. NORTH)
N: 479385.85' E: 2384629.87'



CERTIFICATE

THIS IS TO CERTIFY THAT THE ABOVE THAT WAS PREPARED FROM FIELD NOTES OF ACTUAL SURVEYS MADE BY ME OR UNDER MY SUPERVISION AND THAT THE SAME ARE TRUE AND CORRECT TO THE BEST OF MY KNOWLEDGE AND BELIEF.

REGISTERED LAND SURVEYOR
REGISTRATION NO. 28285
STATE OF COLORADO
01525-2

REV: 4 01-25-21 C.IVIE (SL, BPI, EPI & TBH CHANGE

BISON OIL & GAS II

HUNT FED 8-60 17B-20-3
SW 1/4 NE 1/4, SECTION 17, T8N, R60W, 6th P.M.
WELD COUNTY, COLORADO

SURVEYED BY	CHAD MEIERS	03-27-20	SCALE
DRAWN BY	J.J.	07-25-17	1" = 1000'

WELL LOCATION PLAT

BASIS OF ELEVATION

SPOT ELEVATION LOCATED AT THE NORTHEAST CORNER OF SECTION 2, T9N, R61W, 6th P.M., TAKEN FROM THE GROVER SOUTH, QUADRANGLE, COLORADO, WELD COUNTY, 7.5 MINUTE QUAD (TOPOGRAPHICAL MAP) PUBLISHED BY THE UNITED STATES DEPARTMENT OF THE INTERIOR, GEOLOGICAL SURVEY. SAID ELEVATION IS MARKED AS BEING 5043 FEET.



UELS, LLC
Corporate Office * 85 South 200 East
Vernal, UT 84078 * (435) 789-1017

