

LEGEND:

- = 90° SYMBOL
● = PROPOSED WELLHEAD.
◆ = PRODUCTION INTERVAL.
○ = TARGET BOTTOM HOLE.
▲ = SECTION CORNERS LOCATED. (NAD 83)

T8N, R60W, 6th P.M.

LINE TABLE		
LINE	DIRECTION	LENGTH
L1	S82°15'54"E	2021.45'
L2	S01°01'33"W	300.07'
L3	S01°00'12"W	100.02'

SURFACE LOCATION 2366' FNL 2363' FEL
NAD 83 (SURFACE LOCATION)
LATITUDE = 40°39'47.04" (40.663067)
LONGITUDE = 104°06'51.30" (104.114250)
NAD 27 (SURFACE LOCATION)
LATITUDE = 40°39'47.09" (40.663081)
LONGITUDE = 104°06'49.48" (104.113744)
STATE PLANE NAD 83 (CO. NORTH)
N: 1487401.91 E: 3384432.72
STATE PLANE NAD 27 (CO. NORTH)
N: 487400.77 E: 2384582.84
BEG. PROD. INTERVAL 2348' FSL 4930' FWL 356' FEL
NAD 83 (BEG. PROD. INTERVAL)
LATITUDE = 40°39'41.38" (40.661494)
LONGITUDE = 104°06'25.38" (104.107051)
NAD 27 (BEG. PROD. INTERVAL)
LATITUDE = 40°39'41.43" (40.661508)
LONGITUDE = 104°06'23.57" (104.106547)
STATE PLANE NAD 83 (CO. NORTH)
N: 1486860.12' E: 3386438.28'
STATE PLANE NAD 27 (CO. NORTH)
N: 486858.96' E: 2386588.47'
ENDING PROD. INTERVAL 300' FSL 4930' FWL 342' FEL
NAD 83 (ENDING PROD. INTERVAL)
LATITUDE = 40°38'28.87" (40.641353)
LONGITUDE = 104°06'27.15" (104.107542)
NAD 27 (ENDING PROD. INTERVAL)
LATITUDE = 40°38'28.92" (40.641367)
LONGITUDE = 104°06'25.33" (104.107037)
STATE PLANE NAD 83 (CO. NORTH)
N: 1479521.17' E: 3386417.47'
STATE PLANE NAD 27 (CO. NORTH)
N: 479520.15' E: 2386567.76'
TARGET BOTTOM HOLE 200' FSL 4930' FWL 342' FEL
NAD 83 (TARGET BOTTOM HOLE)
LATITUDE = 40°38'27.88" (40.641079)
LONGITUDE = 104°06'27.17" (104.107548)
NAD 27 (TARGET BOTTOM HOLE)
LATITUDE = 40°38'27.93" (40.641093)
LONGITUDE = 104°06'25.36" (104.107043)
STATE PLANE NAD 83 (CO. NORTH)
N: 1479421.18' E: 3386417.23'
STATE PLANE NAD 27 (CO. NORTH)
N: 479420.16' E: 2386567.51'

BASIS OF BEARINGS
BASIS OF BEARINGS IS A G.P.S. OBSERVATION

BASIS OF ELEVATION

SPOT ELEVATION LOCATED AT THE NORTHEAST CORNER OF SECTION 2, T9N, R61W, 6th P.M., TAKEN FROM THE GROVER SOUTH, QUADRANGLE, COLORADO, WELD COUNTY, 7.5 MINUTE QUAD (TOPOGRAPHICAL MAP) PUBLISHED BY THE UNITED STATES DEPARTMENT OF THE INTERIOR, GEOLOGICAL SURVEY. SAID ELEVATION IS MARKED AS BEING 5043 FEET.



UELS, LLC
Corporate Office * 85 South 200 East
Vernal, UT 84078 * (435) 789-1017

PDOP = 1.2

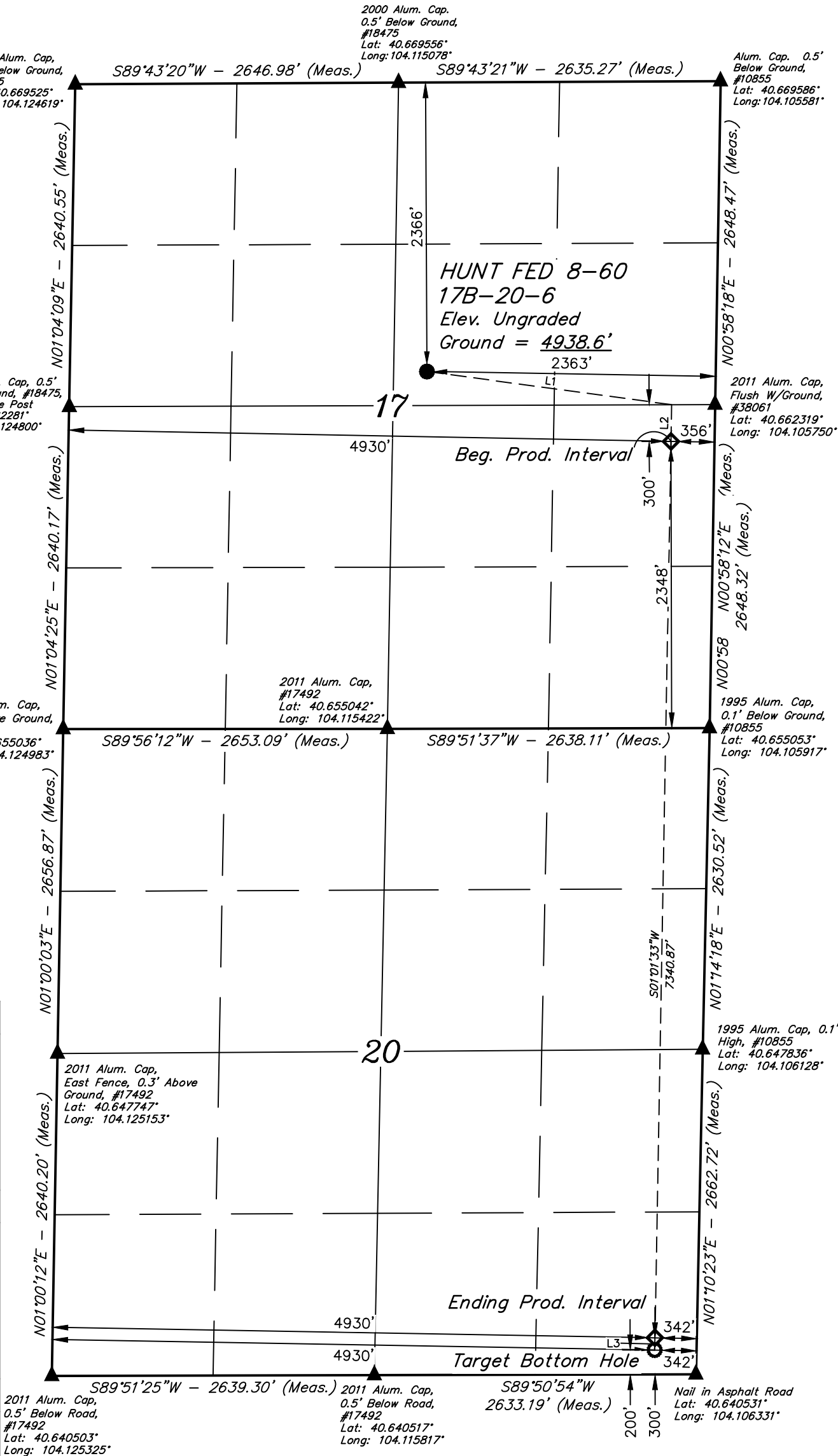


BISON OIL & GAS II

HUNT FED 8-60 17B-20-6
SW 1/4 NE 1/4, SECTION 17, T8N, R60W, 6th P.M.
WELD COUNTY, COLORADO

SURVEYED BY	CHAD MEIERS	03-27-20	SCALE
DRAWN BY	C.IVIE	01-25-20	1" = 1000'

WELL LOCATION PLAT



CERTIFICATE
THIS IS TO CERTIFY THAT THE ABOVE PLAT WAS PREPARED FROM FIELD NOTES OF ACTUAL SURVEYS MADE BY ME OR UNDER MY SUPERVISION, AND THAT THE SAME ARE TRUE AND CORRECT TO THE BEST OF MY KNOWLEDGE AND BELIEF.

REGISTERED LAND SURVEYOR
REGISTRATION NO. 28285
STATE OF COLORADO

