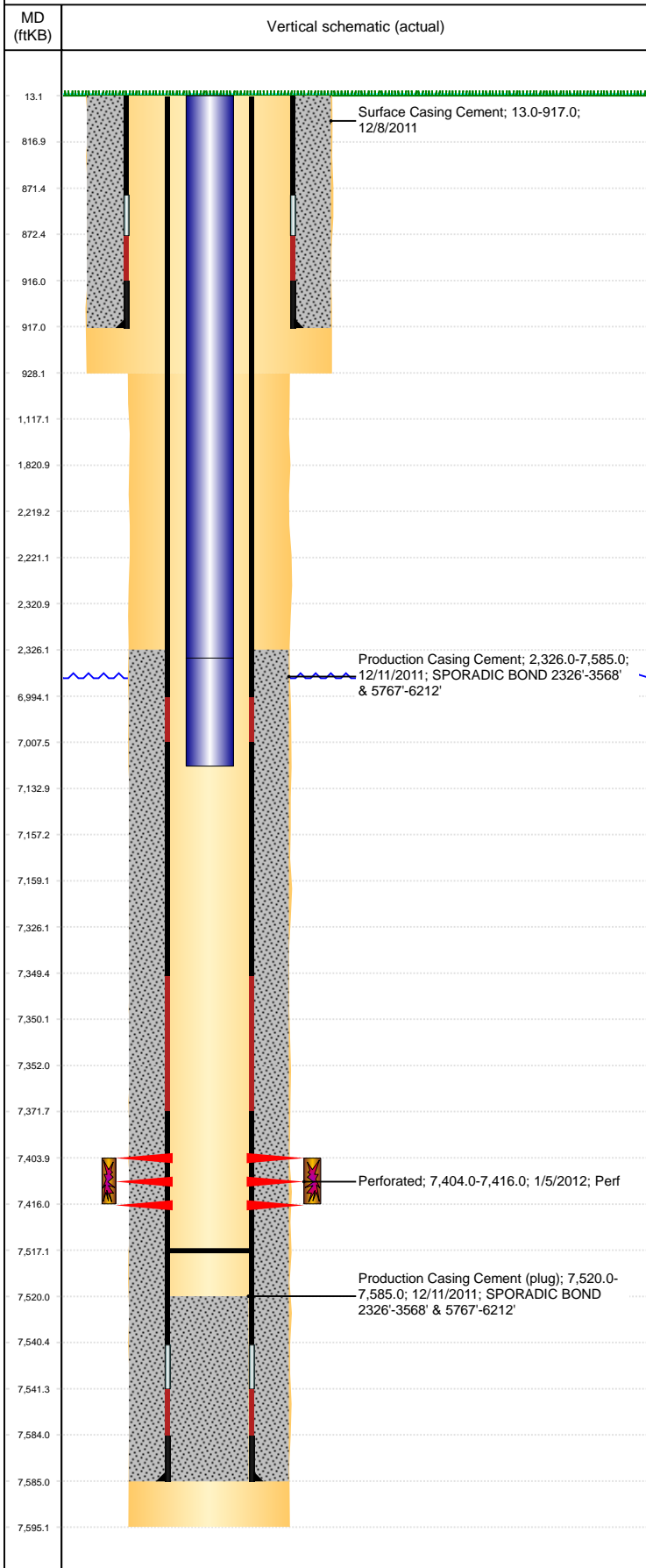


Well Name: LINDBLAD PC MM25-15

VERTICAL, ORIGINAL HOLE, 2/9/2021 9:52:06 AM



| Well Header | | | | | | | | | |
|----------------------------------|-------------|---|-----------------------|--|-------------------|------------------------------|------------------------------------|--------------------|---------------------------------------|
| API 05-123-33500 | | Business Unit DJ BASIN | | | District 15 | | Well Config VERTICAL | | |
| KB - GL / MSL (ft... 13.00 | | Spud Date 12/7/2011 | | P & A Date | | Well Production Status PR | | | SoRT No |
| Comment | | | | | | | | | |
| Surface Location (Congressional) | | | | | | | | | |
| Qtr 3 SW | Qtr 4 SE | Section 25 | Twnshp 7 | Twnsh... N | Range 67 | Rng E/... W | Actual Latitude (°) 40.53962343 | | Actual Longitude (°) -104.83872724 |
| Wellbore Sections | | | | | | | | | |
| Section Des | | | Size (in) | | | Act Top, MD (ftKB) | | Act Btm, MD (ftKB) | |
| SURFACE | | | 12 1/4 | | | 13 | | 928 | |
| PRODUCTION | | | 7 7/8 | | | 928 | | 7,595 | |
| Casing Strings | | | | | | | | | |
| Csg Des | | Run Date | | OD (in) | Wt/Len (lb/ft) | Grade | Top, MD (ftKB) | MD (ftKB) | |
| Surface | | 12/8/2011 | | 8 5/8 | 24.00 | J-55 | 13.0 | 917.0 | |
| PRODUCTION | | 12/11/2011 | | 4 1/2 | 11.60 | M-80 | 13.0 | 7,585.0 | |
| Cement | | | | | | | | | |
| Des | | | | Start Date | | Top (ftKB) | | Btm (ftKB) | |
| Surface Casing Cement | | | | 12/8/2011 | | 13.0 | | 917.0 | |
| Production Casing Cement | | | | 12/11/2011 | | 2,326.0 | | 7,585.0 | |
| Zone Statuses | | | | | | | | | |
| Zone Name | Status Date | Status | Fluid Type | Job | | | | Prod Method | |
| CODELL | 1/17/2012 | PR | Oil | | | | | Flowing | |
| CODELL | 1/27/2012 | PR | Water | | | | | Flowing | |
| Perforation Data | | | | | | | | | |
| Linked Zone | | Bnch/Stg | Entered Shot Total | Top (ftKB) | | Btm (ftKB) | | Date | |
| CODELL, ORIGINAL HOLE | | A | 48 | 7,404.00 | | 7,416.00 | | 1/5/2012 | |
| Stimulation Intervals | | | | | | | | | |
| Zone | | | Start Date | | | Top (ftKB) | | Btm (ftKB) | |
| CODELL, ORIGINAL HOLE | | | 1/14/2012 | | | 7,404.0 | | 7,416.0 | |
| Other In Hole | | | | | | | | | |
| Run Date | Des | | | Make | | OD (in) | Top (ftKB) | Btm (ftKB) | |
| | | | | | | | | | |
| Logs | | | | | | | | | |
| Date | | Type | | | | Top, MD (ftKB) | | Btm, MD (ftKB) | |
| 12/11/2011 | | SPECTRAL DENSITY/Pe/DSN NEUTRON/SP/ARRAY COMPENSATED TRUE RESISTIVITY | | | | 920.0 | | 7,576.0 | |
| 12/11/2011 | | SPECTRAL GAMMA RAY | | | | 920.0 | | 7,547.0 | |
| 1/4/2012 | | CBL/CCL/GR | | | | 2,100.0 | | 7,519.0 | |
| Plug Back Total Depths | | | | | | | | | |
| Date | | Type | | Com | | | | Depth (ftKB) | |
| 1/4/2012 | | FILL | | DEPTH LOGGER | | | | 7,520.0 | |
| 2/1/2012 | | FILL | | CLEANED OUT FILL TO 7517' AND DID NOT TAG. | | | | 7,517.1 | |