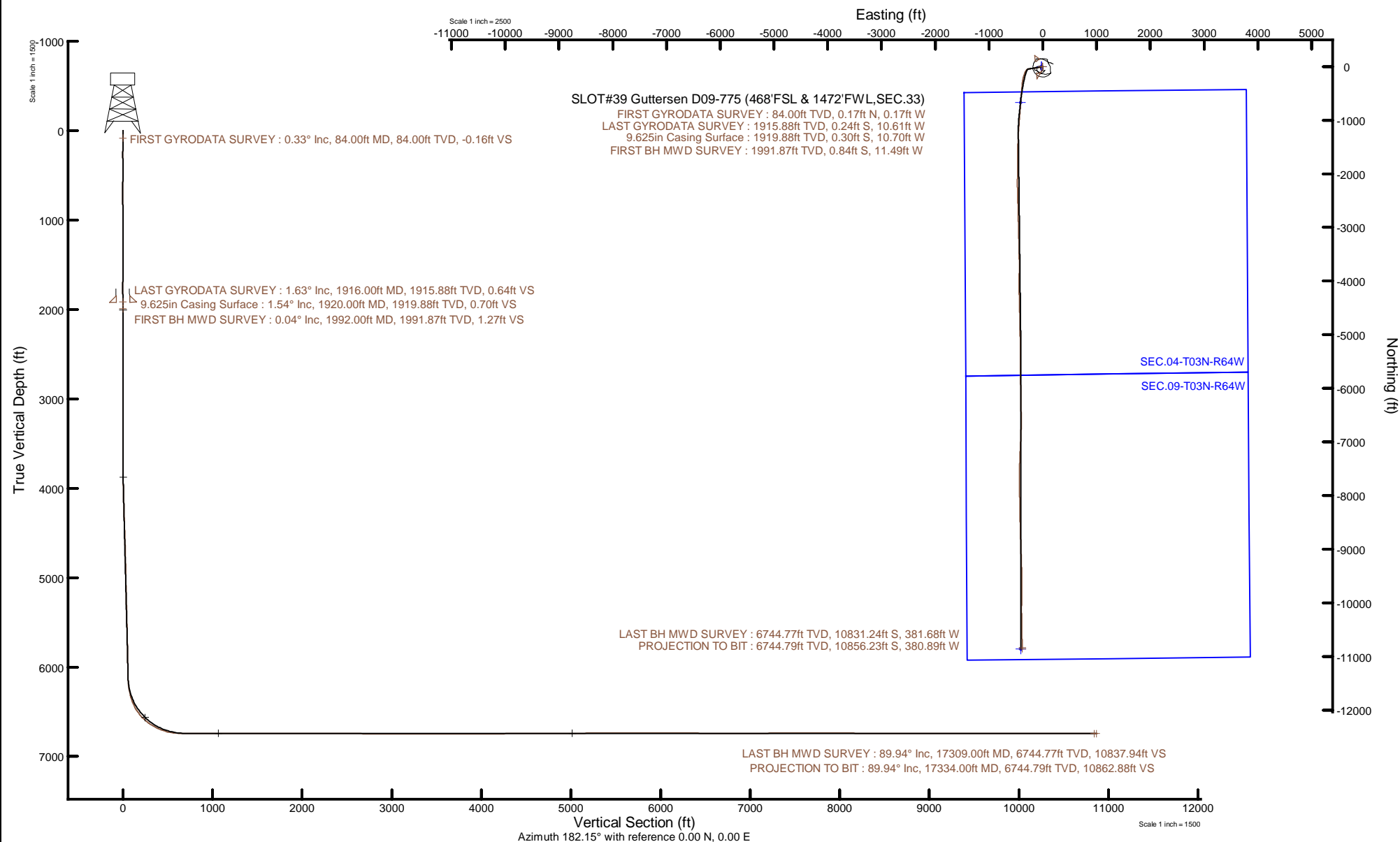


NOBLE ENERGY, INC

Location: COLORADO Slot: SLOT#39 Guttersten D09-775 (468'FSL & 1472'FWL,SEC.33)
Field: WELD COUNTY (NOBLE NAD 83 GRID) Well: Guttersten D09-775
Facility: SEC.33-T04N-R64W Wellbore: Guttersten D09-775 PWB



Plot reference wellpath is Guttersten D09-775 PWP Rev-B.0	Grid System: NAD83 / Lambert Colorado SP, Northern Zone (501), US feet
True vertical depths are referenced to H&P 517 (30) (RT)	North Reference: Grid north
Reference wellpath measured depths are referenced to H&P 517 (30) (RT)	Scale: True distance
H&P 517 (30) (RT) to Mean Sea Level: 4755 feet	Coordinates are in feet referenced to Slot
Mean Sea Level to Mud line (At Slot: SLOT#39 Guttersten D09-775 (468'FSL & 1472'FWL,SEC.33)): 0 feet	Depths are in feet
Offset wellpath MDs are referenced to each path's default MD datum	Created by: painsetr on 2020-12-07; Database: WellArchitectDB



REFERENCE WELLPATH IDENTIFICATION

Operator	NOBLE ENERGY, INC	Well	Guttersen D09-775
Field	WELD COUNTY (NOBLE NAD 83 GRID)	API	0512348950
Facility	SEC.33-T04N-R64W	Wellbore	Guttersen D09-775 AWB
Slot	SLOT#39 Guttersen D09-775 (468'FSL & 1472'FWL,SEC.33)		

REPORT SETUP INFORMATION

Projection System	NAD83 / Lambert Colorado SP, Northern Zone (501), US feet	Software System	WellArchitect® 6.0
North Reference	Grid	User	Painsetr
Scale	0.999957	Report Generated	12/7/2020 at 1:11:37 PM
Convergence at slot	0.61° East	Database	WellArchitectDB

WELLPATH LOCATION

	Local coordinates		Grid coordinates		Geographic coordinates	
	North[ft]	East[ft]	Easting[US ft]	Northing[US ft]	Latitude	Longitude
Slot Location	126.96	-2106.34	3262298.38	1340051.65	40.2630250°	-104.5600910°
Facility Reference Pt			3264404.63	1339924.70	40.2626150°	-104.5525490°
Field Reference Pt			3000000.00	4454105.15	48.7761986°	-105.5000000°

WELLPATH DATUM

Calculation method	Minimum curvature	H&P 517 (30') (RT) to Facility Vertical Datum	4755.00ft
Horizontal Reference Pt	Slot	H&P 517 (30') (RT) to Mean Sea Level	4755.00ft
Vertical Reference Pt	H&P 517 (30') (RT)	H&P 517 (30') (RT) to Mud Line at Slot (SLOT#39 Guttersen D09-775 (468'FSL & 1472'FWL,SEC.33))	4755.00ft
MD Reference Pt	H&P 517 (30') (RT)	Section Origin	N 0.00, E 0.00 ft
Field Vertical Reference	Mean Sea Level	Section Azimuth	182.15°

REFERENCE WELLPATH IDENTIFICATION			
Operator	NOBLE ENERGY, INC	Well	Guttersen D09-775
Field	WELD COUNTY (NOBLE NAD 83 GRID)	API	0512348950
Facility	SEC.33-T04N-R64W	Wellbore	Guttersen D09-775 AWB
Slot	SLOT#39 Guttersen D09-775 (468'FSL & 1472'FWL,SEC.33)		

WELLPATH DATA (184 stations)												
MD [ft]	Inclination [°]	Azimuth [°]	TVD [ft]	Vert Sect [ft]	North [ft]	East [ft]	Grid East [US ft]	Grid North [US ft]	Latitude	Longitude	DLS [°/100ft]	Comments
0.00	0.000	314.610	0.00	0.00	0.00	0.00	3262298.38	1340051.65	40.2630250	-104.5600910	0.00	
84.00	0.330	314.610	84.00	-0.16	0.17	-0.17	3262298.21	1340051.82	40.2630255	-104.5600916	0.39	FIRST GYRODATA SURVEY
177.00	0.250	323.040	177.00	-0.50	0.52	-0.48	3262297.90	1340052.17	40.2630264	-104.5600927	0.10	
267.00	0.060	294.870	267.00	-0.67	0.70	-0.65	3262297.74	1340052.35	40.2630269	-104.5600933	0.22	
331.00	0.670	252.260	331.00	-0.56	0.60	-1.03	3262297.35	1340052.25	40.2630267	-104.5600947	0.98	
425.00	0.100	229.200	424.99	-0.31	0.38	-1.62	3262296.76	1340052.03	40.2630261	-104.5600968	0.62	
520.00	0.370	304.600	519.99	-0.42	0.50	-1.93	3262296.45	1340052.15	40.2630264	-104.5600979	0.38	
615.00	0.420	329.200	614.99	-0.88	0.97	-2.36	3262296.02	1340052.62	40.2630277	-104.5600994	0.18	
709.00	0.480	273.120	708.99	-1.18	1.29	-2.93	3262295.45	1340052.94	40.2630286	-104.5601015	0.45	
804.00	0.540	229.010	803.99	-0.88	1.01	-3.67	3262294.71	1340052.67	40.2630279	-104.5601041	0.41	
898.00	1.000	204.170	897.98	0.19	-0.02	-4.34	3262294.04	1340051.63	40.2630251	-104.5601065	0.59	
993.00	0.800	181.820	992.97	1.62	-1.44	-4.70	3262293.68	1340050.21	40.2630212	-104.5601079	0.42	
1087.00	0.330	232.060	1086.96	2.45	-2.27	-4.93	3262293.45	1340049.39	40.2630189	-104.5601088	0.68	
1182.00	0.270	108.510	1181.96	2.69	-2.51	-4.94	3262293.44	1340049.15	40.2630183	-104.5601088	0.56	
1276.00	0.250	50.770	1275.96	2.62	-2.45	-4.57	3262293.81	1340049.21	40.2630184	-104.5601075	0.27	
1371.00	0.520	345.430	1370.96	2.07	-1.90	-4.52	3262293.87	1340049.76	40.2630199	-104.5601073	0.50	
1465.00	0.950	330.940	1464.95	0.99	-0.80	-5.00	3262293.38	1340050.85	40.2630229	-104.5601090	0.49	
1560.00	0.330	317.720	1559.94	0.12	0.09	-5.57	3262292.81	1340051.74	40.2630254	-104.5601109	0.67	
1654.00	0.580	314.170	1653.94	-0.39	0.62	-6.09	3262292.29	1340052.27	40.2630269	-104.5601128	0.27	
1749.00	0.860	292.180	1748.93	-0.96	1.22	-7.10	3262291.28	1340052.88	40.2630286	-104.5601164	0.41	
1843.00	1.630	241.950	1842.91	-0.53	0.86	-8.93	3262289.45	1340052.51	40.2630276	-104.5601230	1.35	
1875.00	1.530	233.990	1874.90	-0.03	0.40	-9.68	3262288.70	1340052.05	40.2630264	-104.5601257	0.75	
1916.00	1.630	237.160	1915.88	0.64	-0.24	-10.61	3262287.77	1340051.41	40.2630246	-104.5601290	0.32	LAST GYRODATA SURVEY
1992.00	0.040	110.140	1991.87	1.27	-0.84	-11.49	3262286.89	1340050.82	40.2630230	-104.5601322	2.18	FIRST BH MWD SURVEY
2087.00	0.070	174.420	2086.87	1.34	-0.91	-11.46	3262286.93	1340050.75	40.2630228	-104.5601321	0.07	
2182.00	0.100	246.170	2181.87	1.43	-1.00	-11.53	3262286.85	1340050.66	40.2630226	-104.5601323	0.11	
2277.00	0.040	32.540	2276.87	1.44	-1.00	-11.59	3262286.80	1340050.65	40.2630226	-104.5601325	0.14	
2371.00	0.140	30.500	2370.87	1.31	-0.88	-11.51	3262286.87	1340050.78	40.2630229	-104.5601323	0.11	
2466.00	0.150	52.140	2465.87	1.13	-0.70	-11.35	3262287.03	1340050.95	40.2630234	-104.5601317	0.06	
2561.00	0.250	83.930	2560.87	1.02	-0.60	-11.05	3262287.33	1340051.05	40.2630237	-104.5601306	0.15	

REFERENCE WELLPATH IDENTIFICATION			
Operator	NOBLE ENERGY, INC	Well	Guttersen D09-775
Field	WELD COUNTY (NOBLE NAD 83 GRID)	API	0512348950
Facility	SEC.33-T04N-R64W	Wellbore	Guttersen D09-775 AWB
Slot	SLOT#39 Guttersen D09-775 (468'FSL & 1472'FWL,SEC.33)		

WELLPATH DATA (184 stations)												
MD [ft]	Inclination [°]	Azimuth [°]	TVD [ft]	Vert Sect [ft]	North [ft]	East [ft]	Grid East [US ft]	Grid North [US ft]	Latitude	Longitude	DLS [°/100ft]	Comments
2656.00	0.030	191.500	2655.87	1.01	-0.60	-10.85	3262287.54	1340051.00	40.2630237	-104.5601299	0.27	
2750.00	0.030	157.110	2749.87	1.06	-0.65	-10.84	3262287.54	1340051.00	40.2630235	-104.5601299	0.02	
2845.00	0.130	113.870	2844.87	1.12	-0.72	-10.73	3262287.65	1340050.94	40.2630233	-104.5601295	0.12	
2939.00	0.170	213.100	2938.87	1.28	-0.88	-10.71	3262287.67	1340050.78	40.2630229	-104.5601294	0.24	
3034.00	0.180	287.480	3033.87	1.36	-0.95	-10.93	3262287.45	1340050.70	40.2630227	-104.5601302	0.22	
3224.00	0.230	311.200	3223.87	1.04	-0.61	-11.50	3262286.88	1340051.04	40.2630237	-104.5601322	0.05	
3318.00	0.100	213.090	3317.87	0.99	-0.56	-11.69	3262286.69	1340051.10	40.2630238	-104.5601329	0.28	
3413.00	0.140	101.740	3412.87	1.08	-0.65	-11.62	3262286.76	1340051.01	40.2630236	-104.5601327	0.21	
3508.00	0.160	39.560	3507.87	1.00	-0.57	-11.42	3262286.96	1340051.08	40.2630238	-104.5601320	0.16	
3602.00	0.030	323.140	3601.87	0.87	-0.45	-11.35	3262287.03	1340051.20	40.2630241	-104.5601317	0.17	
3697.00	0.040	215.640	3696.87	0.88	-0.46	-11.39	3262286.99	1340051.20	40.2630241	-104.5601318	0.06	
3791.00	1.820	257.670	3790.85	1.28	-0.80	-12.87	3262285.52	1340050.85	40.2630232	-104.5601371	1.90	
3886.00	3.850	257.810	3885.73	2.45	-1.80	-17.46	3262280.92	1340049.86	40.2630206	-104.5601536	2.14	
3980.00	5.230	252.340	3979.44	4.68	-3.76	-24.63	3262273.76	1340047.89	40.2630154	-104.5601794	1.54	
4075.00	4.110	254.280	4074.12	7.20	-6.00	-32.03	3262266.35	1340045.65	40.2630095	-104.5602060	1.19	
4170.00	4.100	251.600	4168.88	9.43	-7.99	-38.53	3262259.86	1340043.66	40.2630042	-104.5602293	0.20	
4264.00	7.220	255.540	4262.41	12.30	-10.53	-47.44	3262250.94	1340041.12	40.2629975	-104.5602614	3.34	
4359.00	7.290	255.400	4356.65	15.74	-13.54	-59.05	3262239.33	1340038.11	40.2629896	-104.5603031	0.08	
4454.00	7.180	257.410	4450.89	18.99	-16.35	-70.68	3262227.71	1340035.30	40.2629822	-104.5603449	0.29	
4549.00	7.000	258.970	4545.16	21.82	-18.75	-82.16	3262216.23	1340032.90	40.2629759	-104.5603861	0.28	
4643.00	7.230	260.150	4638.44	24.36	-20.86	-93.61	3262204.78	1340030.79	40.2629705	-104.5604272	0.29	
4738.00	6.920	261.070	4732.72	26.70	-22.77	-105.15	3262193.24	1340028.88	40.2629655	-104.5604686	0.35	
4832.00	6.580	261.840	4826.06	28.75	-24.42	-116.07	3262182.31	1340027.24	40.2629614	-104.5605078	0.37	
4927.00	7.340	262.000	4920.36	30.80	-26.03	-127.47	3262170.92	1340025.62	40.2629572	-104.5605487	0.80	
5022.00	7.170	261.720	5014.60	32.94	-27.73	-139.35	3262159.04	1340023.92	40.2629529	-104.5605913	0.18	
5116.00	6.820	261.680	5107.90	35.01	-29.38	-150.68	3262147.71	1340022.27	40.2629487	-104.5606320	0.37	
5211.00	6.750	261.260	5202.24	37.09	-31.05	-161.77	3262136.61	1340020.61	40.2629445	-104.5606718	0.09	
5305.00	6.800	261.480	5295.58	39.17	-32.71	-172.74	3262125.65	1340018.94	40.2629402	-104.5607112	0.06	
5400.00	6.850	260.390	5389.91	41.36	-34.49	-183.89	3262114.50	1340017.16	40.2629357	-104.5607512	0.15	
5494.00	6.750	260.840	5483.25	43.59	-36.31	-194.87	3262103.52	1340015.35	40.2629310	-104.5607906	0.12	

REFERENCE WELLPATH IDENTIFICATION			
Operator	NOBLE ENERGY, INC	Well	Guttersen D09-775
Field	WELD COUNTY (NOBLE NAD 83 GRID)	API	0512348950
Facility	SEC.33-T04N-R64W	Wellbore	Guttersen D09-775 AWB
Slot	SLOT#39 Guttersen D09-775 (468'FSL & 1472'FWL,SEC.33)		

WELLPATH DATA (184 stations)												
MD [ft]	Inclination [°]	Azimuth [°]	TVD [ft]	Vert Sect [ft]	North [ft]	East [ft]	Grid East [US ft]	Grid North [US ft]	Latitude	Longitude	DLS [°/100ft]	Comments
5589.00	6.920	261.880	5577.57	45.70	-38.00	-206.04	3262092.35	1340013.65	40.2629267	-104.5608307	0.22	
5684.00	6.800	261.130	5671.89	47.80	-39.68	-217.27	3262081.12	1340011.98	40.2629224	-104.5608710	0.16	
5778.00	6.930	261.130	5765.22	49.95	-41.41	-228.37	3262070.02	1340010.24	40.2629180	-104.5609108	0.14	
5967.00	6.780	261.690	5952.87	54.15	-44.78	-250.67	3262047.72	1340006.87	40.2629094	-104.5609908	0.09	
6062.00	6.790	261.370	6047.20	56.22	-46.44	-261.78	3262036.62	1340005.22	40.2629052	-104.5610307	0.04	
6156.00	7.330	255.330	6140.49	58.99	-48.79	-273.07	3262025.32	1340002.87	40.2628990	-104.5610712	0.98	
6251.00	13.410	236.890	6233.92	67.12	-56.35	-288.18	3262010.22	1339995.31	40.2628787	-104.5611257	7.21	
6346.00	18.710	220.700	6325.22	85.41	-73.94	-307.36	3261991.03	1339977.72	40.2628310	-104.5611951	7.25	
6440.00	25.450	204.630	6412.36	115.93	-103.79	-325.65	3261972.75	1339947.87	40.2627496	-104.5612617	9.57	
6535.00	34.610	199.770	6494.53	160.61	-147.84	-343.32	3261955.07	1339903.82	40.2626292	-104.5613267	9.97	
6629.00	44.770	194.670	6566.79	218.53	-205.14	-360.79	3261937.61	1339846.52	40.2624724	-104.5613915	11.34	
6724.00	54.950	188.520	6627.98	290.06	-276.19	-375.06	3261923.33	1339775.48	40.2622778	-104.5614453	11.79	
6819.00	63.200	185.470	6676.77	371.19	-357.00	-384.89	3261913.51	1339694.66	40.2620563	-104.5614836	9.11	
6914.00	71.840	184.470	6713.06	458.78	-444.37	-392.46	3261905.94	1339607.30	40.2618167	-104.5615140	9.15	
7008.00	81.720	185.170	6734.53	550.07	-535.44	-400.15	3261898.25	1339516.23	40.2615669	-104.5615450	10.54	
7103.00	90.120	184.280	6741.29	644.65	-629.80	-407.95	3261890.45	1339421.89	40.2613082	-104.5615765	8.89	
7198.00	90.060	184.240	6741.14	739.59	-724.53	-415.00	3261883.40	1339327.15	40.2610484	-104.5616054	0.08	
7292.00	89.850	184.450	6741.21	833.52	-818.26	-422.12	3261876.28	1339233.43	40.2607913	-104.5616345	0.32	
7387.00	90.310	184.840	6741.08	928.43	-912.95	-429.82	3261868.58	1339138.74	40.2605316	-104.5616656	0.63	
7482.00	89.820	184.610	6740.97	1023.33	-1007.63	-437.64	3261860.76	1339044.07	40.2602720	-104.5616972	0.57	
7576.00	89.690	184.430	6741.37	1117.25	-1101.33	-445.05	3261853.35	1338950.37	40.2600150	-104.5617273	0.24	
7671.00	89.720	184.660	6741.86	1212.16	-1196.03	-452.58	3261845.82	1338855.67	40.2597553	-104.5617579	0.24	
7766.00	90.030	182.890	6742.07	1307.12	-1290.82	-458.83	3261839.57	1338760.89	40.2594953	-104.5617839	1.89	
7860.00	89.660	180.650	6742.32	1401.11	-1384.77	-461.74	3261836.67	1338666.94	40.2592375	-104.5617979	2.42	
7955.00	89.850	180.270	6742.73	1496.07	-1479.77	-462.50	3261835.90	1338571.95	40.2589768	-104.5618042	0.45	
8049.00	89.820	180.770	6743.00	1590.03	-1573.76	-463.35	3261835.05	1338477.96	40.2587188	-104.5618108	0.53	
8144.00	90.030	180.840	6743.12	1685.01	-1668.75	-464.69	3261833.72	1338382.97	40.2584581	-104.5618192	0.23	
8238.00	89.910	180.920	6743.17	1778.98	-1762.74	-466.13	3261832.27	1338288.99	40.2582001	-104.5618279	0.15	
8333.00	89.910	180.670	6743.32	1873.96	-1857.73	-467.45	3261830.95	1338194.00	40.2579395	-104.5618363	0.26	
8428.00	90.280	180.620	6743.17	1968.92	-1952.73	-468.52	3261829.89	1338099.01	40.2576787	-104.5618437	0.39	

REFERENCE WELLPATH IDENTIFICATION			
Operator	NOBLE ENERGY, INC	Well	Guttersen D09-775
Field	WELD COUNTY (NOBLE NAD 83 GRID)	API	0512348950
Facility	SEC.33-T04N-R64W	Wellbore	Guttersen D09-775 AWB
Slot	SLOT#39 Guttersen D09-775 (468'FSL & 1472'FWL,SEC.33)		

WELLPATH DATA (184 stations)

MD [ft]	Inclination [°]	Azimuth [°]	TVD [ft]	Vert Sect [ft]	North [ft]	East [ft]	Grid East [US ft]	Grid North [US ft]	Latitude	Longitude	DLS [°/100ft]	Comments
8522.00	89.910	180.870	6743.01	2062.89	-2046.72	-469.74	3261828.66	1338005.03	40.2574208	-104.5618516	0.48	
8617.00	89.780	180.950	6743.27	2157.87	-2141.71	-471.25	3261827.15	1337910.04	40.2571601	-104.5618606	0.16	
8712.00	89.750	178.520	6743.66	2252.78	-2236.70	-470.81	3261827.59	1337815.06	40.2568994	-104.5618627	2.56	
8806.00	89.880	178.410	6743.96	2346.58	-2330.66	-468.29	3261830.11	1337721.09	40.2566414	-104.5618572	0.18	
8900.00	89.600	178.350	6744.39	2440.38	-2424.63	-465.63	3261832.77	1337627.14	40.2563834	-104.5618512	0.30	
8995.00	89.850	178.380	6744.84	2535.17	-2519.59	-462.92	3261835.48	1337532.18	40.2561227	-104.5618451	0.27	
9089.00	89.970	178.910	6744.99	2629.00	-2613.56	-460.70	3261837.70	1337438.21	40.2558647	-104.5618407	0.58	
9184.00	89.660	178.710	6745.30	2723.83	-2708.54	-458.73	3261839.67	1337343.24	40.2556039	-104.5618373	0.39	
9279.00	89.450	178.550	6746.03	2818.65	-2803.51	-456.46	3261841.95	1337248.27	40.2553432	-104.5618327	0.28	
9374.00	90.120	178.320	6746.39	2913.45	-2898.47	-453.86	3261844.54	1337153.31	40.2550824	-104.5618270	0.75	
9468.00	90.370	178.760	6745.99	3007.26	-2992.44	-451.47	3261846.94	1337059.35	40.2548244	-104.5618220	0.54	
9563.00	89.940	178.250	6745.73	3102.07	-3087.41	-448.99	3261849.41	1336964.39	40.2545637	-104.5618167	0.70	
9657.00	90.000	178.570	6745.78	3195.87	-3181.37	-446.38	3261852.02	1336870.43	40.2543057	-104.5618110	0.35	
9752.00	90.120	178.840	6745.68	3290.70	-3276.35	-444.23	3261854.17	1336775.46	40.2540450	-104.5618069	0.31	
9846.00	89.750	178.480	6745.79	3384.52	-3370.32	-442.03	3261856.37	1336681.49	40.2537870	-104.5618025	0.55	
9941.00	89.880	178.960	6746.10	3479.35	-3465.29	-439.91	3261858.49	1336586.52	40.2535262	-104.5617985	0.52	
10036.00	89.780	178.640	6746.38	3574.19	-3560.27	-437.92	3261860.48	1336491.54	40.2532654	-104.5617950	0.35	
10130.00	89.850	178.850	6746.68	3668.02	-3654.25	-435.86	3261862.54	1336397.57	40.2530074	-104.5617912	0.24	
10320.00	89.850	181.630	6747.18	3857.90	-3844.23	-436.66	3261861.74	1336207.60	40.2524860	-104.5618013	1.46	
10414.00	90.680	182.740	6746.74	3951.90	-3938.16	-440.24	3261858.16	1336113.67	40.2522283	-104.5618177	1.47	
10509.00	89.880	178.740	6746.28	4046.85	-4033.13	-441.47	3261856.93	1336018.71	40.2519676	-104.5618256	4.29	
10604.00	90.220	178.940	6746.20	4141.69	-4128.11	-439.55	3261858.85	1335923.73	40.2517069	-104.5618224	0.42	
10698.00	90.650	179.000	6745.48	4235.54	-4222.09	-437.86	3261860.54	1335829.75	40.2514489	-104.5618199	0.46	
10793.00	90.460	178.690	6744.56	4330.38	-4317.07	-435.94	3261862.46	1335734.78	40.2511881	-104.5618166	0.38	
10887.00	90.310	178.510	6743.93	4424.20	-4411.04	-433.65	3261864.76	1335640.82	40.2509301	-104.5618119	0.25	
10982.00	89.850	178.470	6743.80	4519.00	-4506.00	-431.14	3261867.26	1335545.85	40.2506694	-104.5618066	0.49	
11076.00	90.460	178.670	6743.54	4612.82	-4599.97	-428.80	3261869.60	1335451.89	40.2504114	-104.5618017	0.68	
11171.00	90.400	179.110	6742.83	4707.66	-4694.95	-426.96	3261871.44	1335356.91	40.2501506	-104.5617987	0.47	
11266.00	90.370	177.920	6742.19	4802.47	-4789.92	-424.49	3261873.91	1335261.95	40.2498899	-104.5617935	1.25	
11360.00	90.310	179.750	6741.63	4896.30	-4883.89	-422.58	3261875.82	1335167.98	40.2496319	-104.5617902	1.95	

REFERENCE WELLPATH IDENTIFICATION			
Operator	NOBLE ENERGY, INC	Well	Guttersen D09-775
Field	WELD COUNTY (NOBLE NAD 83 GRID)	API	0512348950
Facility	SEC.33-T04N-R64W	Wellbore	Guttersen D09-775 AWB
Slot	SLOT#39 Guttersen D09-775 (468'FSL & 1472'FWL,SEC.33)		

WELLPATH DATA (184 stations)												
MD [ft]	Inclination [°]	Azimuth [°]	TVD [ft]	Vert Sect [ft]	North [ft]	East [ft]	Grid East [US ft]	Grid North [US ft]	Latitude	Longitude	DLS [°/100ft]	Comments
11455.00	90.580	178.940	6740.90	4991.19	-4978.88	-421.50	3261876.90	1335073.00	40.2493711	-104.5617899	0.90	
11549.00	90.030	179.520	6740.40	5085.06	-5072.87	-420.23	3261878.17	1334979.01	40.2491131	-104.5617890	0.85	
11644.00	90.680	179.190	6739.81	5179.95	-5167.86	-419.17	3261879.24	1334884.02	40.2488524	-104.5617888	0.77	
11738.00	90.220	179.660	6739.07	5273.84	-5261.85	-418.22	3261880.18	1334790.04	40.2485943	-104.5617889	0.70	
11833.00	90.650	181.240	6738.35	5368.79	-5356.85	-418.97	3261879.43	1334695.05	40.2483336	-104.5617952	1.72	
11927.00	90.220	179.720	6737.63	5462.74	-5450.84	-419.76	3261878.65	1334601.06	40.2480757	-104.5618016	1.68	
12022.00	90.030	178.200	6737.43	5557.59	-5545.82	-418.03	3261880.37	1334506.09	40.2478149	-104.5617990	1.61	
12117.00	90.150	179.600	6737.28	5652.44	-5640.80	-416.21	3261882.19	1334411.11	40.2475542	-104.5617961	1.48	
12211.00	89.850	179.790	6737.28	5746.35	-5734.80	-415.71	3261882.69	1334317.12	40.2472961	-104.5617979	0.38	
12306.00	90.000	178.810	6737.40	5841.23	-5829.79	-414.55	3261883.85	1334222.13	40.2470354	-104.5617973	1.04	
12400.00	89.540	178.830	6737.78	5935.07	-5923.77	-412.61	3261885.79	1334128.15	40.2467774	-104.5617939	0.49	
12495.00	89.910	178.880	6738.24	6029.91	-6018.75	-410.71	3261887.69	1334033.18	40.2465166	-104.5617907	0.39	
12589.00	89.690	178.400	6738.56	6123.74	-6112.72	-408.48	3261889.92	1333939.21	40.2462586	-104.5617863	0.56	
12684.00	90.000	179.650	6738.82	6218.59	-6207.70	-406.86	3261891.54	1333844.23	40.2459978	-104.5617841	1.36	
12779.00	89.630	179.080	6739.13	6313.48	-6302.70	-405.81	3261892.59	1333749.24	40.2457371	-104.5617839	0.72	
12874.00	89.450	179.240	6739.89	6408.35	-6397.68	-404.42	3261893.98	1333654.26	40.2454763	-104.5617825	0.25	
12968.00	89.780	178.620	6740.52	6502.20	-6491.66	-402.66	3261895.74	1333560.28	40.2452183	-104.5617798	0.75	
13063.00	90.030	180.430	6740.68	6597.09	-6586.66	-401.88	3261896.52	1333465.29	40.2449575	-104.5617806	1.92	
13158.00	90.030	180.400	6740.63	6692.05	-6681.65	-402.56	3261895.84	1333370.30	40.2446968	-104.5617867	0.03	
13253.00	89.380	181.610	6741.12	6787.03	-6776.64	-404.23	3261894.17	1333275.32	40.2444361	-104.5617962	1.45	
13347.00	91.110	182.850	6740.72	6881.02	-6870.56	-407.89	3261890.51	1333181.41	40.2441784	-104.5618129	2.26	
13441.00	89.480	181.530	6740.23	6975.01	-6964.48	-411.48	3261886.92	1333087.48	40.2439207	-104.5618293	2.23	
13536.00	89.940	182.520	6740.71	7070.01	-7059.42	-414.84	3261883.56	1332992.55	40.2436603	-104.5618449	1.15	
13631.00	90.370	182.850	6740.46	7165.01	-7154.32	-419.29	3261879.11	1332897.66	40.2433999	-104.5618645	0.57	
13725.00	91.020	182.720	6739.32	7258.99	-7248.20	-423.85	3261874.55	1332803.78	40.2431424	-104.5618844	0.71	
13820.00	90.520	181.860	6738.04	7353.98	-7343.11	-427.65	3261870.75	1332708.87	40.2428819	-104.5619016	1.05	
13915.00	90.460	180.370	6737.23	7448.96	-7438.09	-429.50	3261868.90	1332613.90	40.2426213	-104.5619118	1.57	
14009.00	90.340	180.340	6736.57	7542.91	-7532.08	-430.08	3261868.32	1332519.91	40.2423633	-104.5619174	0.13	
14104.00	89.850	179.480	6736.41	7637.84	-7627.08	-429.93	3261868.47	1332424.92	40.2421026	-104.5619205	1.04	
14199.00	90.250	179.920	6736.33	7732.75	-7722.08	-429.43	3261868.97	1332329.92	40.2418418	-104.5619223	0.63	

REFERENCE WELLPATH IDENTIFICATION			
Operator	NOBLE ENERGY, INC	Well	Guttersen D09-775
Field	WELD COUNTY (NOBLE NAD 83 GRID)	API	0512348950
Facility	SEC.33-T04N-R64W	Wellbore	Guttersen D09-775 AWB
Slot	SLOT#39 Guttersen D09-775 (468'FSL & 1472'FWL,SEC.33)		

WELLPATH DATA (184 stations)

MD [ft]	Inclination [°]	Azimuth [°]	TVD [ft]	Vert Sect [ft]	North [ft]	East [ft]	Grid East [US ft]	Grid North [US ft]	Latitude	Longitude	DLS [°/100ft]	Comments
14293.00	90.250	179.850	6735.92	7826.68	-7816.08	-429.24	3261869.16	1332235.93	40.2415838	-104.5619252	0.07	
14388.00	89.260	180.300	6736.33	7921.61	-7911.08	-429.37	3261869.03	1332140.93	40.2413230	-104.5619293	1.14	
14482.00	89.110	179.480	6737.66	8015.53	-8005.07	-429.19	3261869.21	1332046.95	40.2410650	-104.5619322	0.89	
14577.00	89.170	179.650	6739.09	8110.42	-8100.05	-428.47	3261869.93	1331951.97	40.2408043	-104.5619332	0.19	
14671.00	88.610	179.380	6740.91	8204.31	-8194.03	-427.67	3261870.73	1331857.99	40.2405463	-104.5619339	0.66	
14766.00	89.880	178.180	6742.16	8299.13	-8289.00	-425.65	3261872.75	1331763.03	40.2402856	-104.5619303	1.84	
14861.00	89.850	178.580	6742.39	8393.92	-8383.96	-422.96	3261875.44	1331668.07	40.2400249	-104.5619242	0.42	
14955.00	90.030	178.820	6742.48	8487.75	-8477.94	-420.83	3261877.57	1331574.10	40.2397669	-104.5619202	0.32	
15050.00	89.480	178.570	6742.89	8582.58	-8572.91	-418.67	3261879.73	1331479.13	40.2395061	-104.5619160	0.64	
15144.00	89.780	178.300	6743.50	8676.38	-8666.87	-416.10	3261882.30	1331385.17	40.2392481	-104.5619104	0.43	
15239.00	90.340	178.750	6743.40	8771.19	-8761.84	-413.66	3261884.75	1331290.21	40.2389874	-104.5619052	0.76	
15334.00	89.970	178.260	6743.14	8866.00	-8856.81	-411.18	3261887.22	1331195.25	40.2387266	-104.5618999	0.65	
15428.00	89.820	178.410	6743.31	8959.79	-8950.77	-408.45	3261889.95	1331101.29	40.2384687	-104.5618937	0.23	
15523.00	89.720	177.990	6743.69	9054.56	-9045.72	-405.46	3261892.94	1331006.34	40.2382079	-104.5618866	0.45	
15617.00	90.000	178.720	6743.92	9148.35	-9139.68	-402.76	3261895.64	1330912.39	40.2379500	-104.5618805	0.83	
15712.00	89.750	177.660	6744.13	9243.13	-9234.63	-399.76	3261898.64	1330817.44	40.2376893	-104.5618734	1.15	
15807.00	89.910	177.610	6744.41	9337.83	-9329.55	-395.84	3261902.56	1330722.53	40.2374286	-104.5618629	0.18	
15901.00	89.910	178.100	6744.56	9431.57	-9423.48	-392.32	3261906.08	1330628.60	40.2371707	-104.5618539	0.52	
15996.00	90.220	180.820	6744.45	9526.45	-9518.47	-391.43	3261906.97	1330533.61	40.2369099	-104.5618543	2.88	
16090.00	90.220	180.570	6744.09	9620.42	-9612.46	-392.57	3261905.83	1330439.63	40.2366520	-104.5618619	0.27	
16185.00	90.090	180.740	6743.84	9715.39	-9707.46	-393.65	3261904.74	1330344.64	40.2363913	-104.5618694	0.23	
16280.00	89.820	179.410	6743.91	9810.32	-9802.45	-393.78	3261904.62	1330249.64	40.2361305	-104.5618735	1.43	
16374.00	90.400	180.830	6743.73	9904.26	-9896.45	-393.98	3261904.42	1330155.65	40.2358725	-104.5618777	1.63	
16469.00	90.060	180.610	6743.35	9999.23	-9991.44	-395.17	3261903.23	1330060.66	40.2356118	-104.5618856	0.43	
16564.00	90.000	180.280	6743.30	10094.19	-10086.44	-395.91	3261902.49	1329965.67	40.2353511	-104.5618918	0.35	
16658.00	89.940	179.530	6743.35	10188.12	-10180.44	-395.75	3261902.65	1329871.68	40.2350931	-104.5618948	0.80	
16753.00	89.820	178.500	6743.55	10282.97	-10275.42	-394.12	3261904.28	1329776.70	40.2348323	-104.5618926	1.09	
16848.00	89.660	179.060	6743.98	10377.81	-10370.40	-392.10	3261906.30	1329681.72	40.2345715	-104.5618890	0.61	
16943.00	90.340	179.840	6743.98	10472.70	-10465.39	-391.18	3261907.22	1329586.73	40.2343108	-104.5618893	1.09	
17037.00	90.120	179.120	6743.60	10566.60	-10559.39	-390.33	3261908.07	1329492.74	40.2340528	-104.5618898	0.80	

REFERENCE WELLPATH IDENTIFICATION			
Operator	NOBLE ENERGY, INC	Well	Guttersen D09-775
Field	WELD COUNTY (NOBLE NAD 83 GRID)	API	0512348950
Facility	SEC.33-T04N-R64W	Wellbore	Guttersen D09-775 AWP
Slot	SLOT#39 Guttersen D09-775 (468'FSL & 1472'FWL,SEC.33)		

WELLPATH DATA (184 stations) † = interpolated, ‡ = extrapolated station												
MD [ft]	Inclination [°]	Azimuth [°]	TVD [ft]	Vert Sect [ft]	North [ft]	East [ft]	Grid East [US ft]	Grid North [US ft]	Latitude	Longitude	DLS [°/100ft]	Comments
17132.00	89.290	177.740	6744.09	10661.39	-10654.35	-387.73	3261910.67	1329397.79	40.2337920	-104.5618841	1.70	
17227.00	89.970	178.130	6744.70	10756.13	-10749.28	-384.31	3261914.09	1329302.85	40.2335313	-104.5618754	0.83	
17309.00	89.940	178.200	6744.77	10837.94	-10831.24	-381.68	3261916.72	1329220.90	40.2333063	-104.5618691	0.09	LAST BH MWD SURVEY
17334.00‡	89.940	178.200	6744.79	10862.88	-10856.23	-380.89	3261917.50	1329195.91	40.2332377	-104.5618672	0.00	PROJECTION TO BIT

HOLE & CASING SECTIONS - Ref Wellbore: Guttersen D09-775 AWP Ref Wellpath: Guttersen D09-775 AWP									
String/Diameter	Start MD [ft]	End MD [ft]	Interval [ft]	Start TVD [ft]	End TVD [ft]	Start N/S [ft]	Start E/W [ft]	End N/S [ft]	End E/W [ft]
9.625in Casing Surface	30.00	1920.00	1890.00	30.00	1919.88	0.02	-0.02	-0.30	-10.70

REFERENCE WELLPATH IDENTIFICATION			
Operator	NOBLE ENERGY, INC	Well	Guttersen D09-775
Field	WELD COUNTY (NOBLE NAD 83 GRID)	API	0512348950
Facility	SEC.33-T04N-R64W	Wellbore	Guttersen D09-775 AWB
Slot	SLOT#39 Guttersen D09-775 (468'FSL & 1472'FWL,SEC.33)		

TARGETS								
Name	TVD [ft]	North [ft]	East [ft]	Grid East [US ft]	Grid North [US ft]	Latitude	Longitude	Shape
SEC.04-T03N-R64W	0.00	-0.24	-22.33	3262276.06	1340051.42	40.2630250	-104.5601710	polygon
2D Polygon: dimensions not calculated								
SEC.09-T03N-R64W	0.00	-0.24	-22.33	3262276.06	1340051.42	40.2630250	-104.5601710	polygon
2D Polygon: dimensions not calculated								
Guttersen D09-775 BHL REV-1 (200'FSL & 1002'FWL,SEC.09)	6741.00	-10858.44	-407.45	3261890.95	1329193.70	40.2332324	-104.5619624	point
Guttersen D09-775 TPZ REV-1 (200'FNL & 1050'FWL,SEC.04)	6741.00	-672.57	-414.52	3261883.88	1339379.11	40.2611910	-104.5616017	point

WELLPATH COMPOSITION - Ref Wellbore: Guttersen D09-775 AWB						Ref Wellpath: Guttersen D09-775 AWP	
Start MD [ft]	End MD [ft]	Positional Uncertainty Model	Log Name/Comment		Wellbore	Survey Date	
0.00	1916.00	Gyrodatta 2015 - GC+DROP+COND	Gyrodatta 2015 - GC+DROP+COND 13-1/2" <84 - 1916>		Guttersen D09-775 AWP	11/30/2020	
1916.00	17334.00	OWSG MWD rev2 (MS+IFR1) NOBLE	OWSG MWD rev2 (MS+IFR1) NOBLE 8-1/2" <1992 - 17309>		Guttersen D09-775 AWP	12/3/2020	

REFERENCE WELLPATH IDENTIFICATION			
Operator	NOBLE ENERGY, INC	Well	Guttersen D09-775
Field	WELD COUNTY (NOBLE NAD 83 GRID)	API	0512348950
Facility	SEC.33-T04N-R64W	Wellbore	Guttersen D09-775 AWB
Slot	SLOT#39 Guttersen D09-775 (468'FSL & 1472'FWL,SEC.33)		

WELLPATH COMMENTS				
MD [ft]	Inclination [°]	Azimuth [°]	TVD [ft]	Comment
84.00	0.330	314.610	84.00	FIRST GYRODATA SURVEY
1916.00	1.630	237.160	1915.88	LAST GYRODATA SURVEY
1992.00	0.040	110.140	1991.87	FIRST BH MWD SURVEY
17309.00	89.940	178.200	6744.77	LAST BH MWD SURVEY
17334.00	89.940	178.200	6744.79	PROJECTION TO BIT