



Gamma Ray

LWD MEMORY LOG

Scale:	Company: Noble Energy			
1:240	Well: Guttersen D09-775			
True Vertical Depth	Field: Wattenberg			
Depth Reference:	County: Weld	Country: United States		
Driller's Depth	State: Colorado			
Status:	Surface Location:	Other Services:		
Final Print	Latitude: 40° 15' 46.890" N			
API No: 05-123-48950-00	Longitude: 104° 33' 36.328" W			
Job ID: 110661671	SEC: 33	TWN: 4N	RGE: 64W	
Permanent Datum (P.D.): Mean Sea Level	Elevation: 0.00 ft	N/A		
Log Measured From: Rig Floor	Above P.D.: 4755.00 ft	Elev. KB: 4755.00 ft	Elev. DF: 4725.00 ft	
Elev. GL: 4725.00 ft				
Dates	Interval	Magnetic Field Reference		
From: 2020-12-02	Drilled (ft)	Logged (ft)	Azi Reference North: Grid Dip Angle: (deg)	
To: 2020-12-04	Top: 1930.00	Top: 1930.00	Total Magnetic Field Strength: (nT)	
Spud: 2020-11-26	Bottom: 17334.00	Bottom: 17321.00	Mag to Reference North Correction: (deg)	
Borehole Record	Casing Record			
Hole Size (in)	From (ft)	To (ft)	Size (in)	Weight (lb/ft)
13.500	30.00	1930.00	9.625	36.00
8.500	1930.00	17334.00		30.00
</				

(C) 2020 Baker Hughes Company - All rights reserved. Baker Hughes and its affiliates provides this information on an "as is" basis for general information purposes and believes it to be accurate as of the date of publication. Baker Hughes does not make any representation as to the accuracy or completeness of the information and makes no warranties of any kind, specific, implied or oral, to the fullest extent permissible by law, including those of merchantability and fitness for a particular purpose or use. Baker Hughes hereby disclaims any and all liability for any direct, indirect, consequential or special damages, claims for lost profits, or third party claims arising from the use of the information, whether a claim is asserted in contract, tort, or otherwise. The Baker Hughes logo is a trademark of Baker Hughes Company.

Log Run Summary

Run No	Bit Run No.	Bit Size (in)	Bit Type	Bit Gauge Length (in)	Assembly Type	Logged Interval		Bit Depth Interval		Date / Time		Circ. Hours (h)
						Top	Bottom	From	To	Start Logging	End Logging	
						(ft)	(ft)	(ft)	(ft)			
1	1	8.500	PDC	3.00	AutoTrak Curve	1930.00	17321.00	1930.00	17334.00	2020-12-02 01:22	2020-12-04 04:55	48.95

Crew

Name	Arrive Wellsite	Depart Wellsite	Name	Arrive Wellsite	Depart Wellsite	Name	Arrive Wellsite	Depart Wellsite
------	-----------------	-----------------	------	-----------------	-----------------	------	-----------------	-----------------

[illegible]

Mud Properties Record

Date / Time	Run No.	Depth (ft)	Mud Type	Density (ppg)	Viscosity (cP)	pH	Fluid Loss (cm3)	Oil / Water	Source	Total Chlorides (ppm)	K+ (%)
2020-12-01 14:41	1	1930.00	Oil Based Mud	9.3	10	N/A	20.0	79.5/20.5	Active Pit	27000	0.00
2020-12-04 15:05	1	8945.00	Oil Based Mud	9.6	11	N/A	16.5	79.9/20.1	Active Pit	26000	0.00
2020-12-04 15:06	1	12800.00	Oil Based Mud	9.8	12	N/A	17.0	79.5/20.5	Active Pit	25500	0.00

Equipment and Service Data

Run No.	Tool	Serial Number	Measurement	Sensor Offset (ft)	Bit Offset (ft)	Max O.D. (in)	Min I.D. (in)
1	AutoTrak Curve Steering Unit	14367829	Near Bit VSS	5.93	6.80	7.000	4.330
1	AutoTrak Curve Steering Unit	14367829	Near Bit Inclination	5.93	6.80	7.000	4.330
1	AutoTrak Curve MWD	14371880	Gamma (single)	2.76	12.97	7.000	3.250
1	AutoTrak Curve MWD	14371880	Directional (mag)	12.27	22.48	7.000	3.250

Service and Tool Mnemonics

Mnemonic	Name	Description
ATC SU	AutoTrak Curve SU	Auto Trak Curve Steering Unit
ATC MWD	AutoTrak Curve MWD	Auto Trak Curve MWD
ATC LCPM	AutoTrak Curve LCPM	Auto Trak Curve LCPM

Comments

- 1 Depth measurements were obtained from a depth control system not supplied or operated by Baker Hughes. Due to lack of control by Baker Hughes logging engineers, depth calibrations and measurements could not be independently verified.
- 2 Baker Hughes LWD Run 1 utilized 6 3/4 inch NaviGamma service (Gamma Ray and Directional) behind a 8 1/2 inch bit and rotary steerable assembly from 1930 to 17334 feet MD (1930 to 6744 feet TVD).
- 3 The Gamma Ray Apparent (GRAM) data is presented 0 to 300 API, per the customer's request.

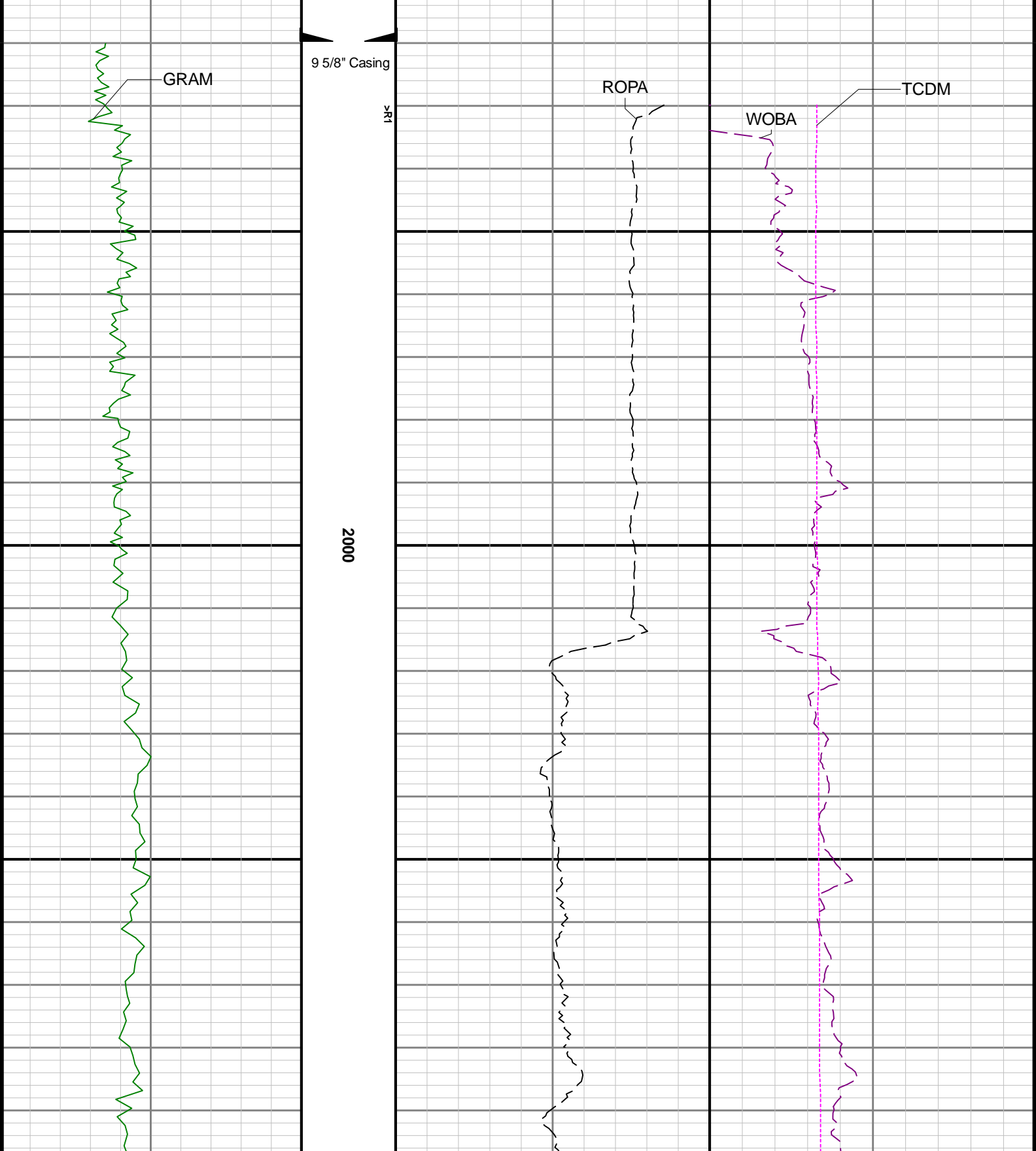
Remarks			
---------	--	--	--

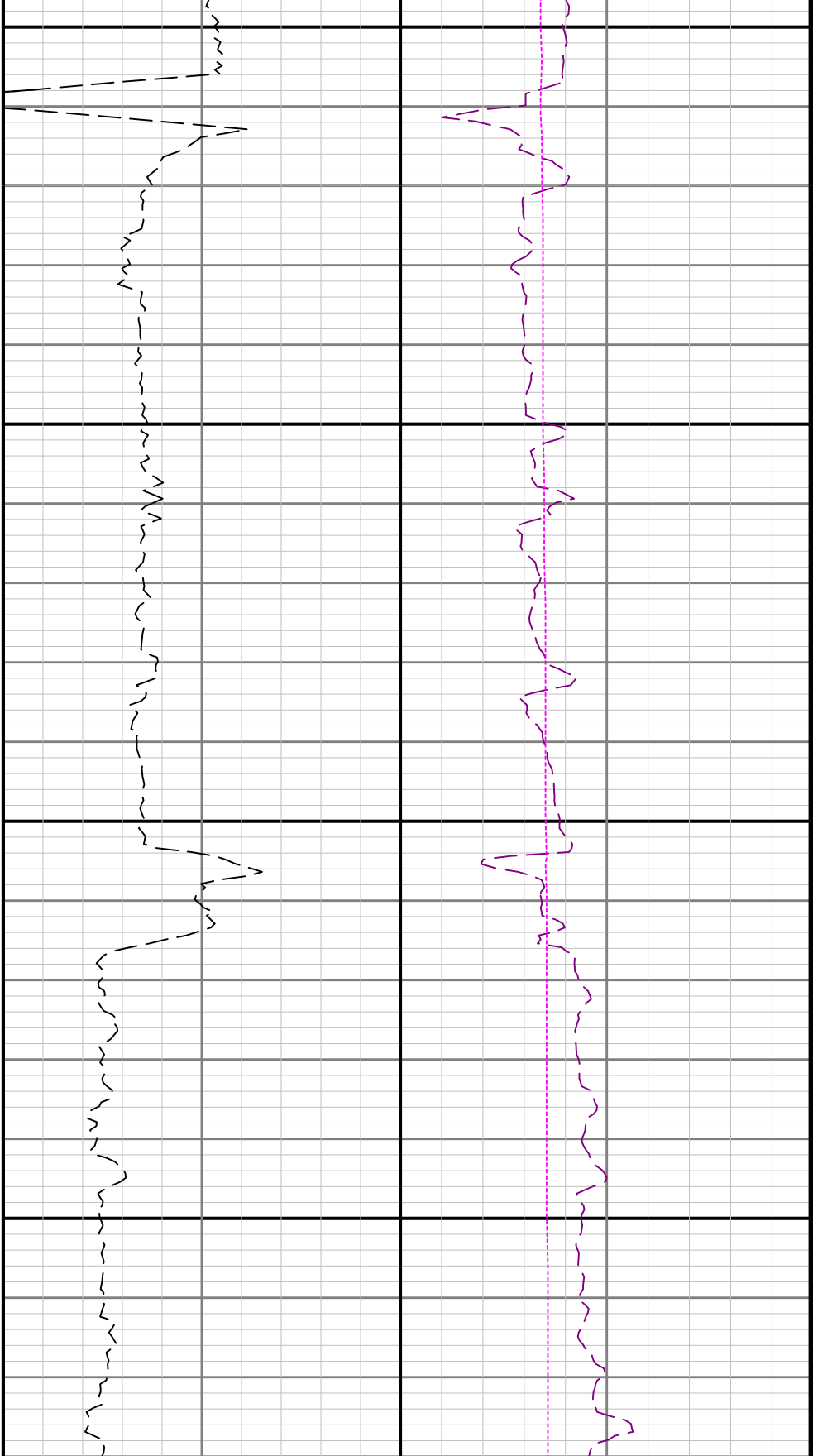
Number	Depth (ft)	Hole Section (in)	Run No.	Remark

Curve Mnemonics

Presented Curves	Description	Units
ROPA	Depth Averaged ROP 3 ft Average	ft/h
WOBA	Weight On Bit 1 ft Average	klb
GRAM	Gamma Ray - Apparent - Memory 0.5 ft Average	API
TCDM	Directional Real-Time Survey Temperature	degF

Gamma Ray - Apparent 0.5 ft Average GRAM 0 300	TVD 1:240 feet	Depth Averaged ROP 3 ft Average ROPA 1000 0	Weight On Bit, Average 1 ft Average WOBA 0 50
API		ft/h	klb Downhole Temperature TCDM 0 300 degF
	1900		





2100

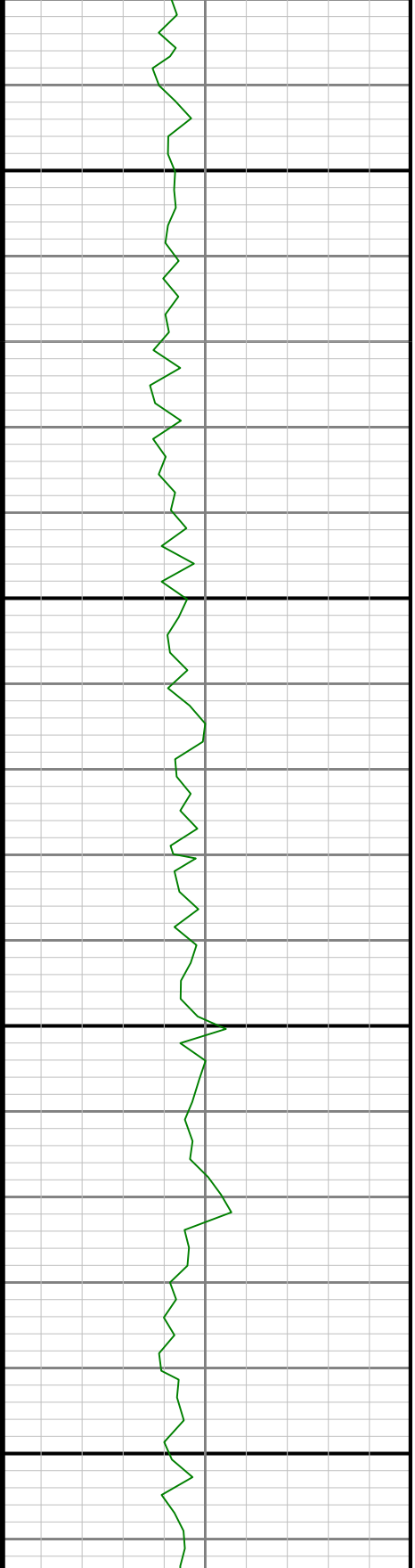
2200

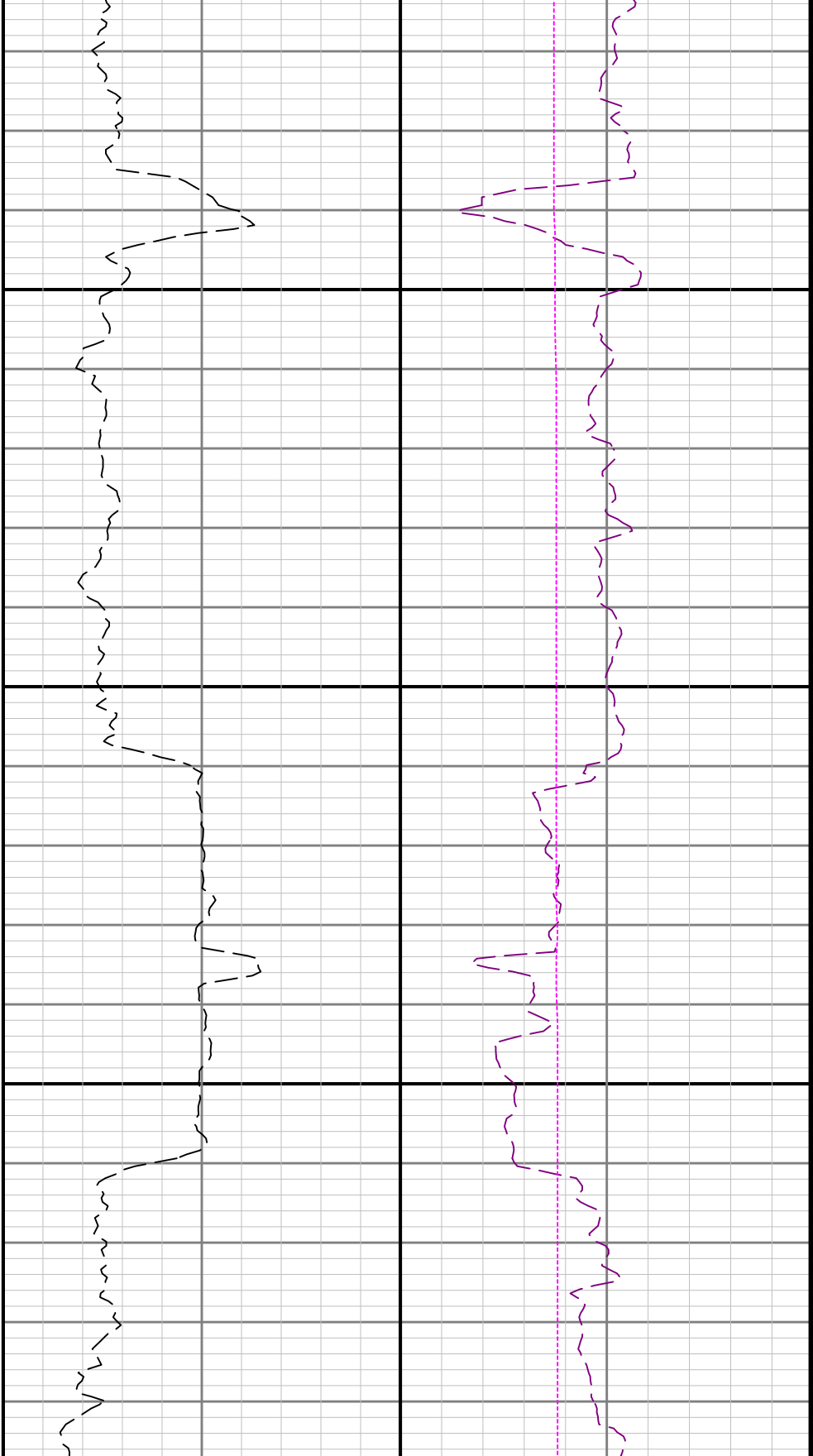




2300

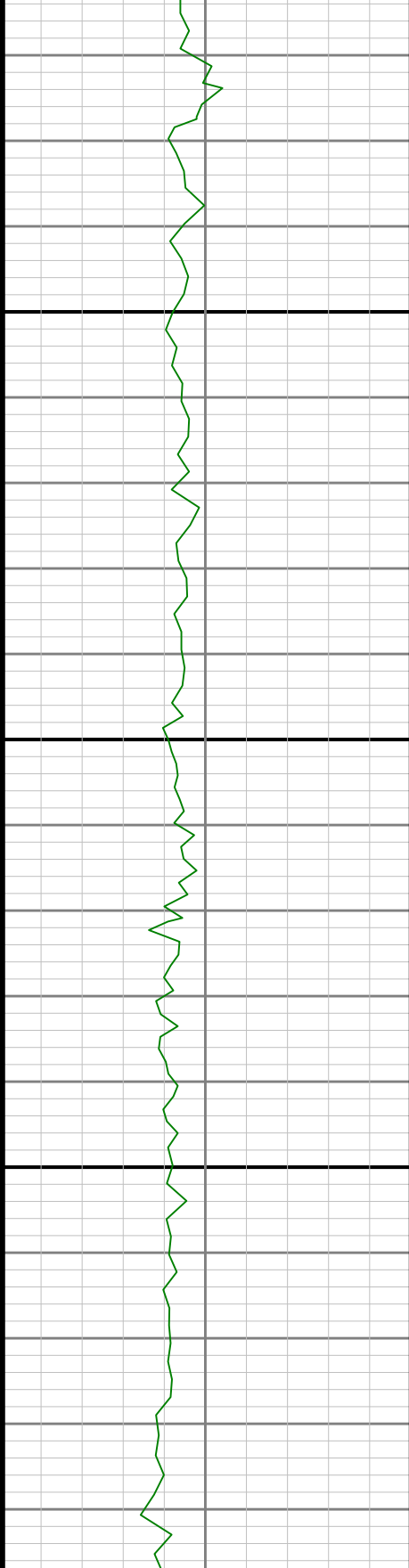
2400

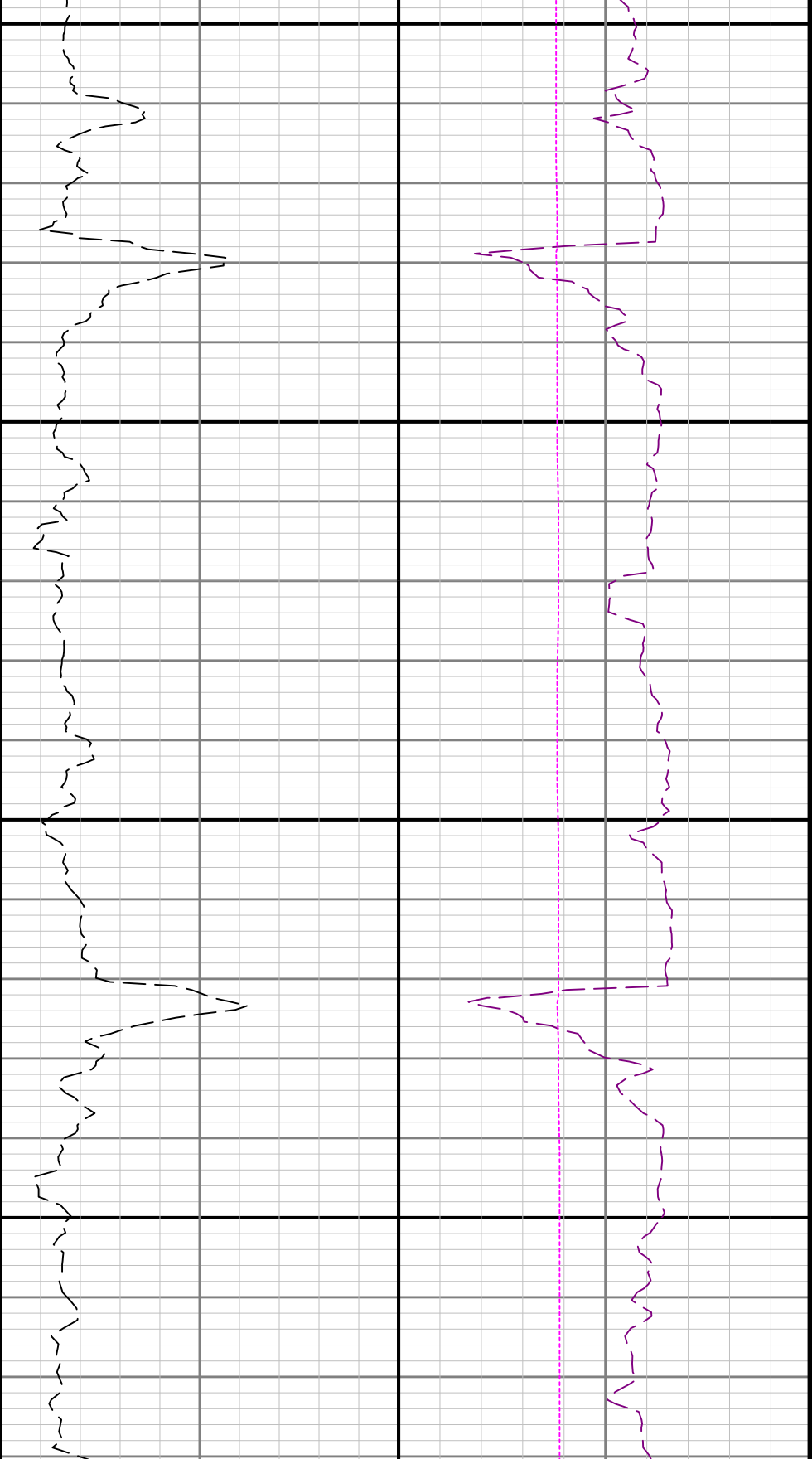




2500

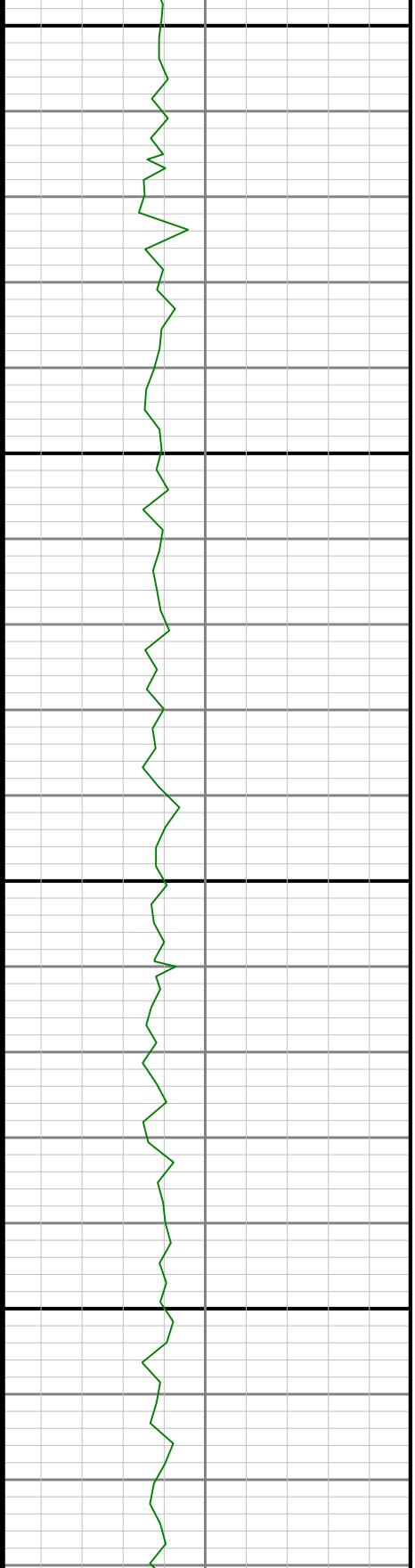
2600

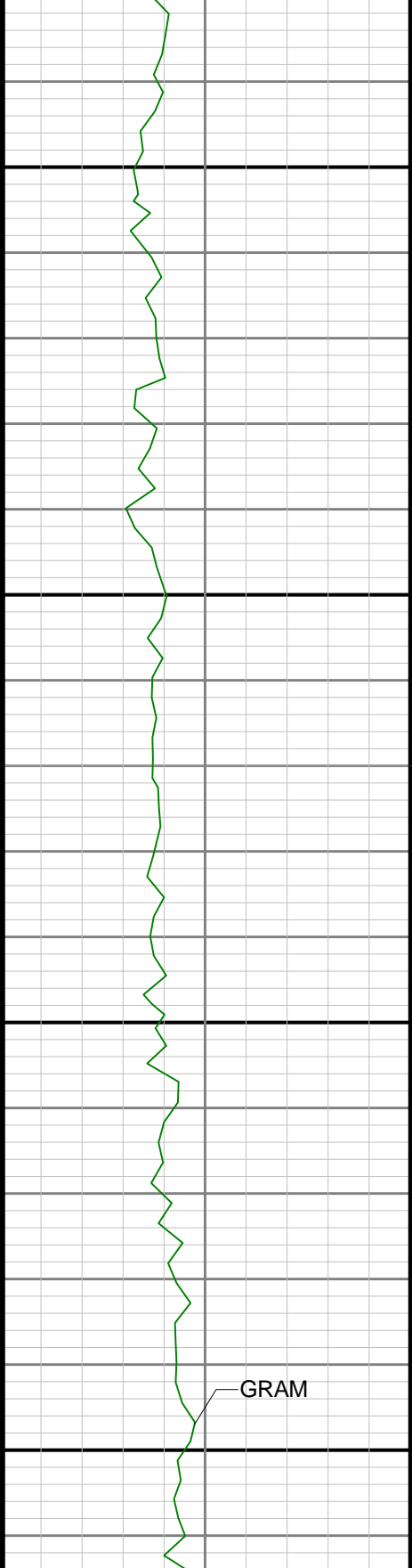




2700

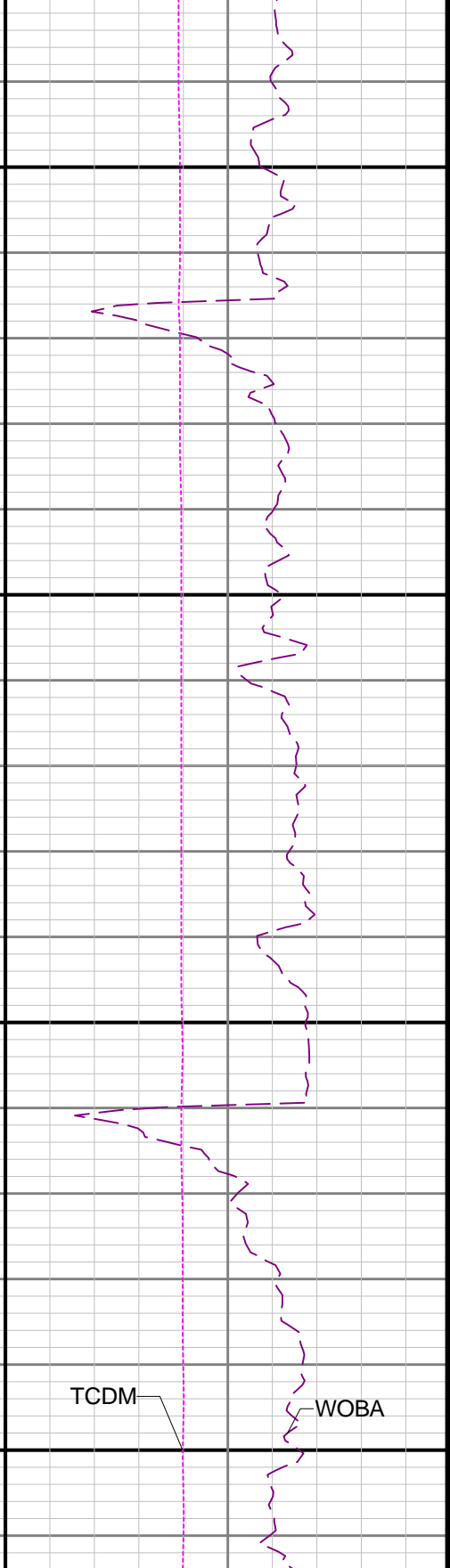
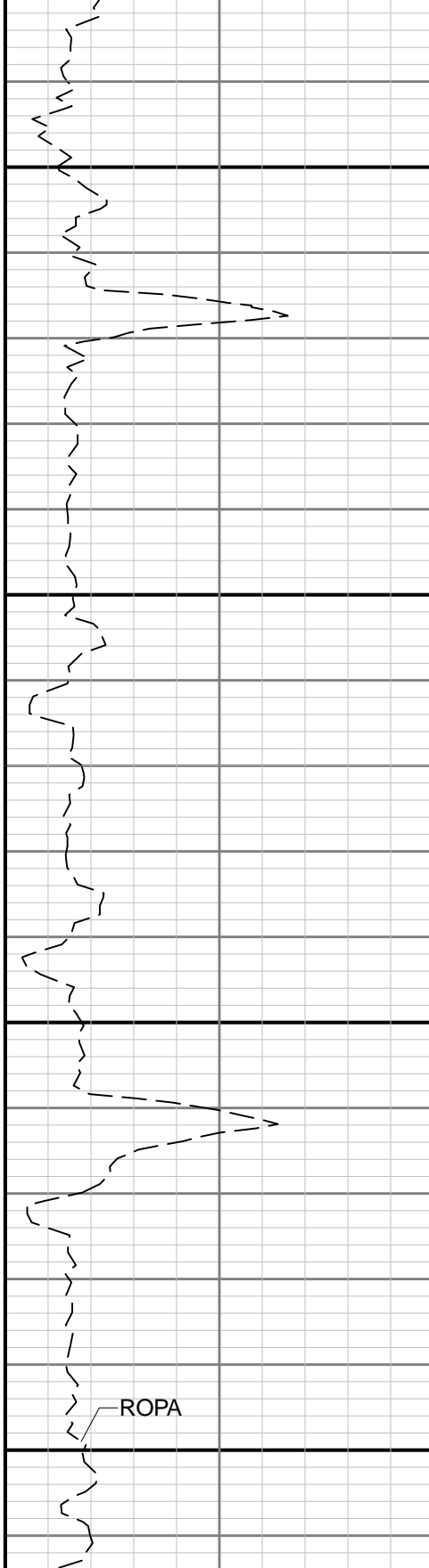
2800

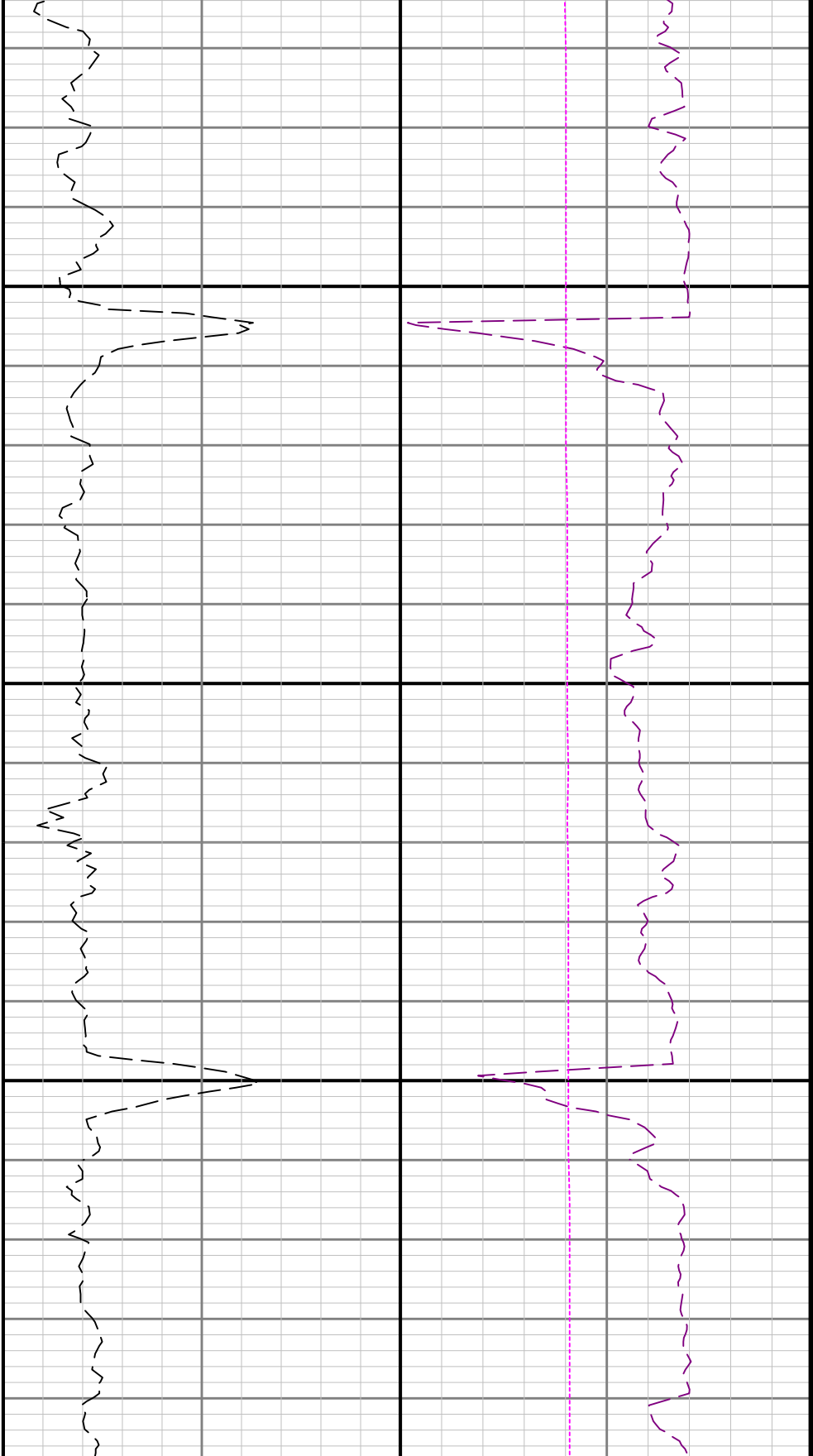




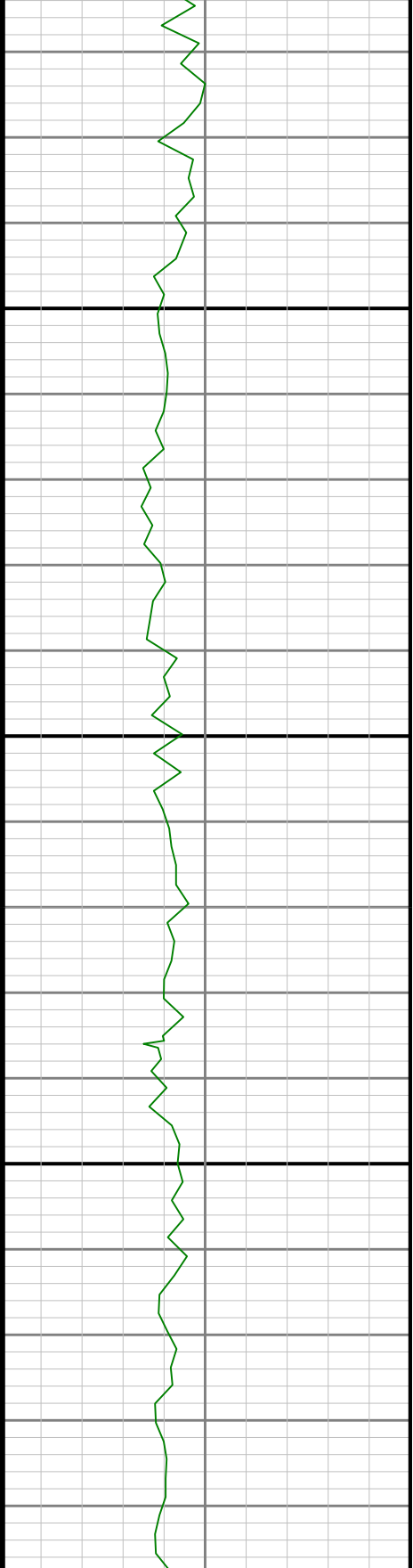
2900

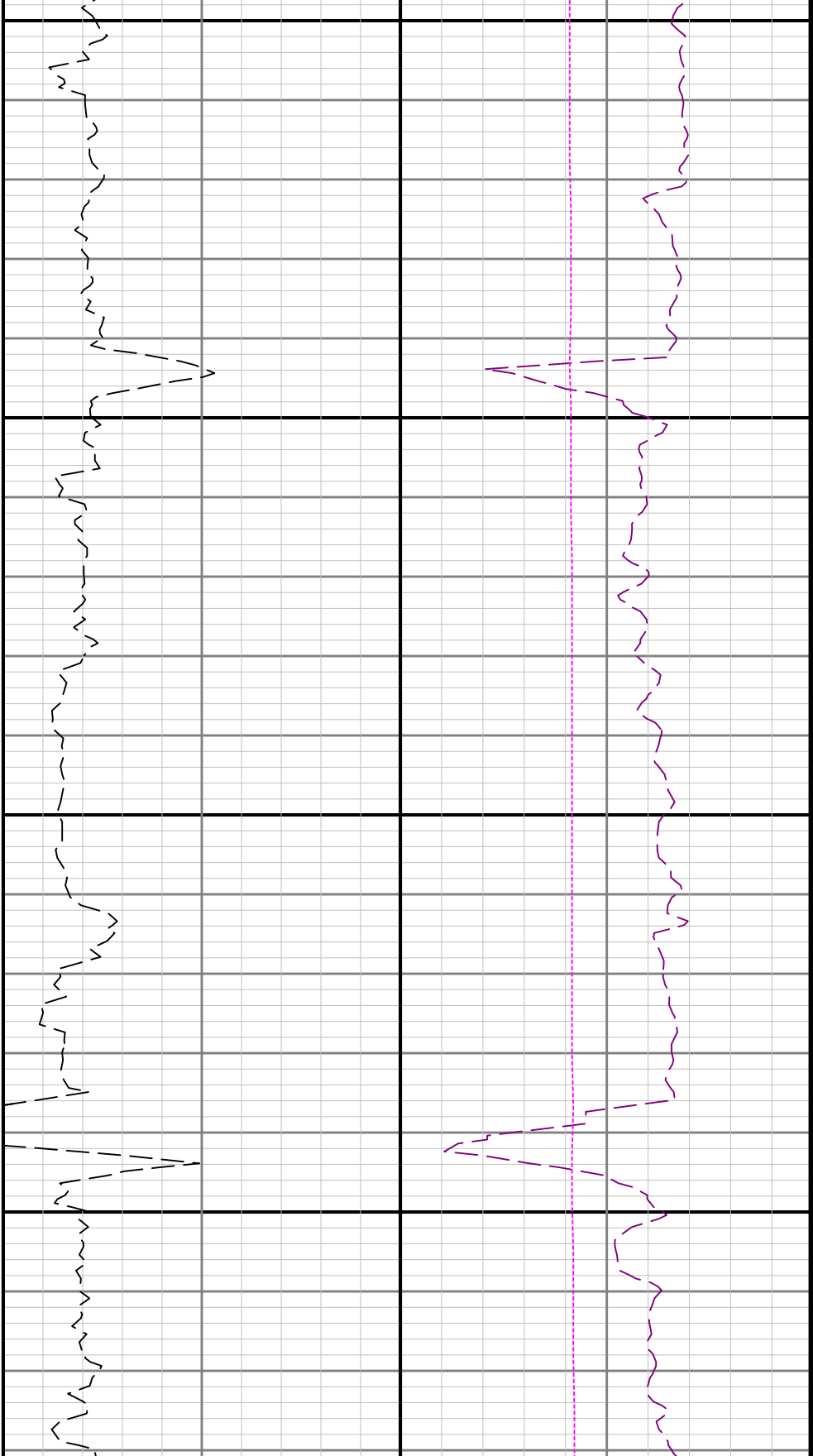
3000





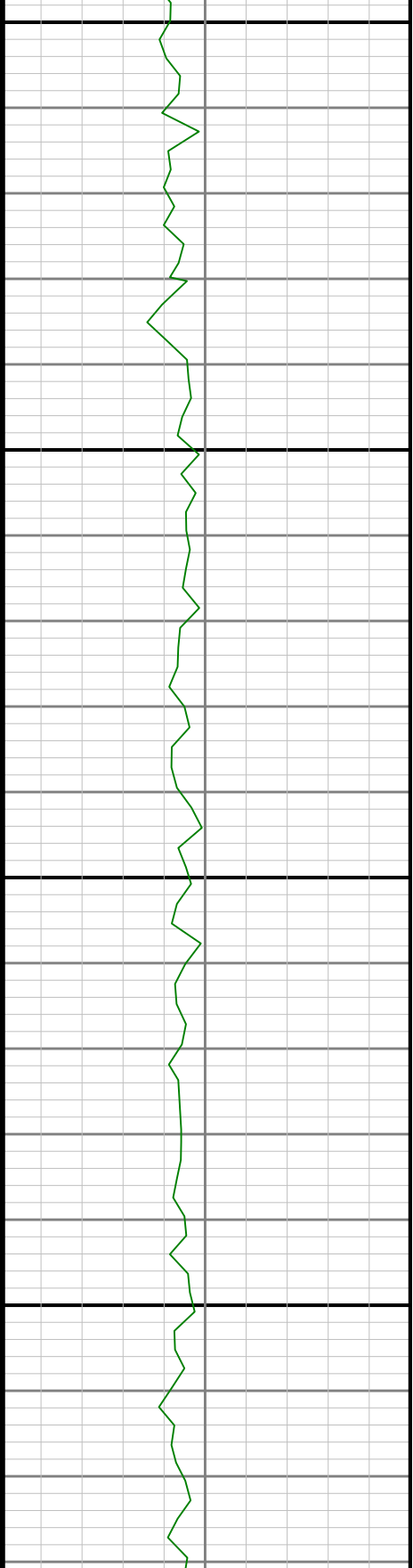
3100

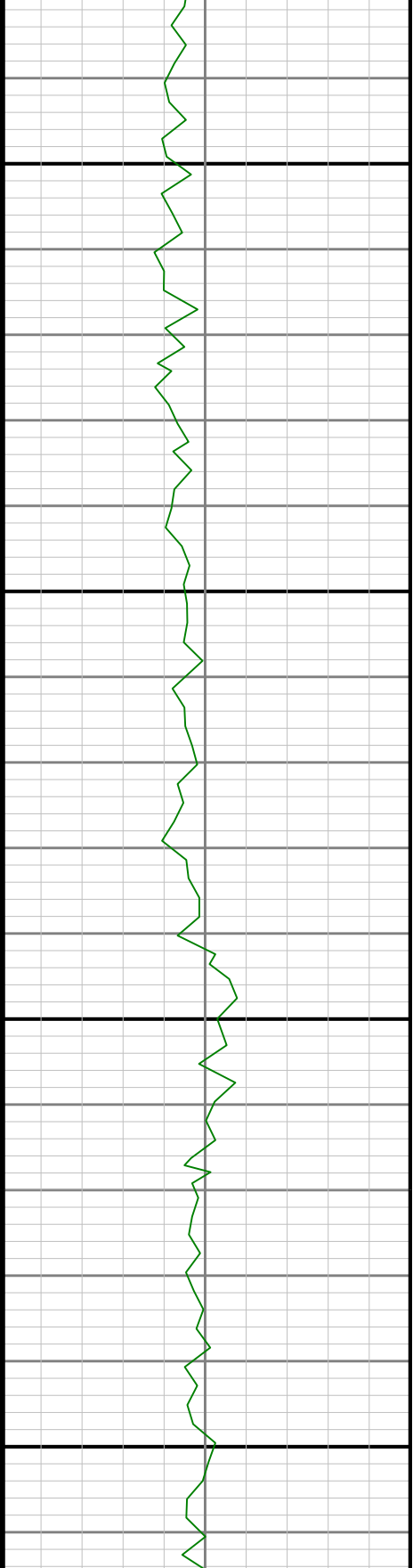
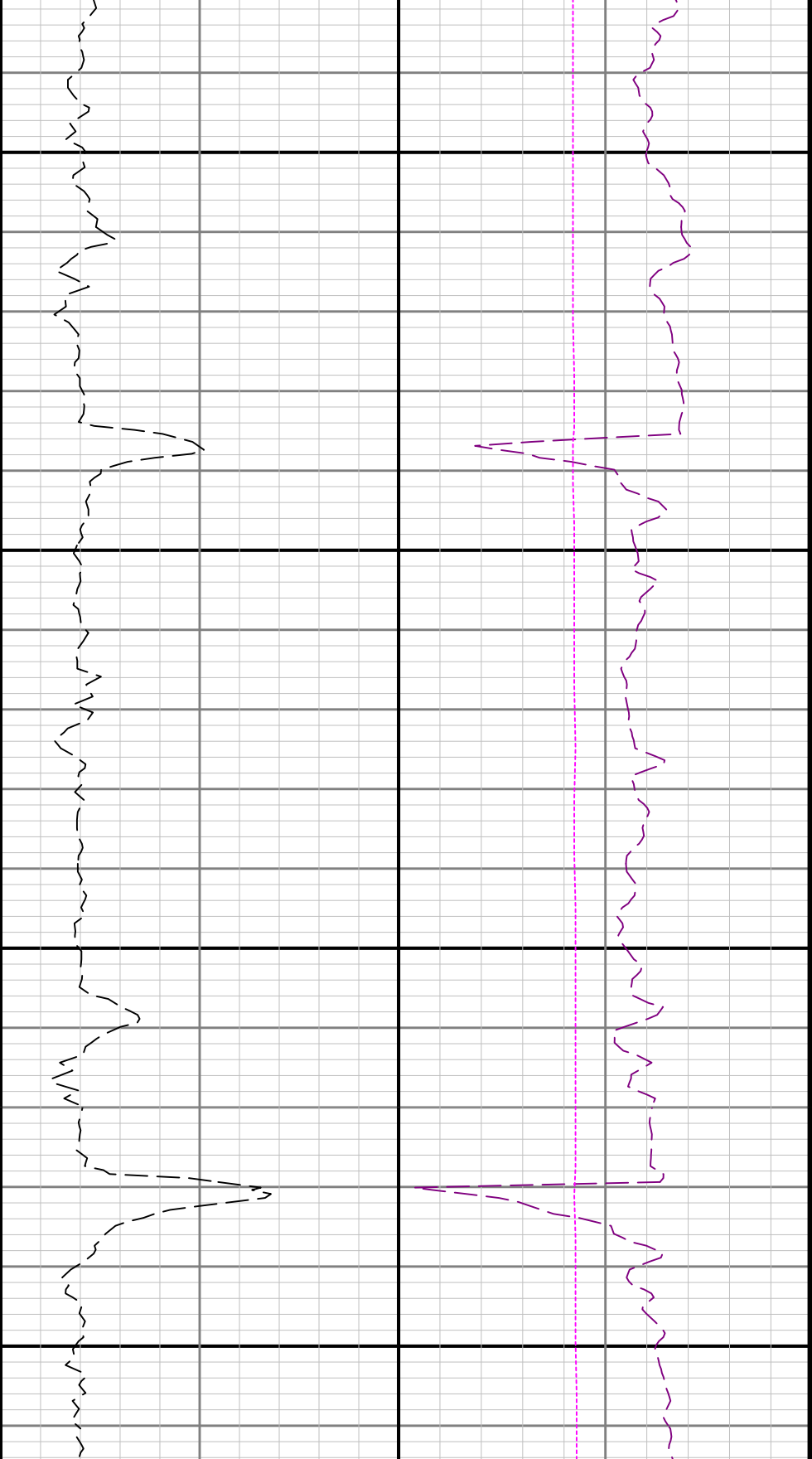


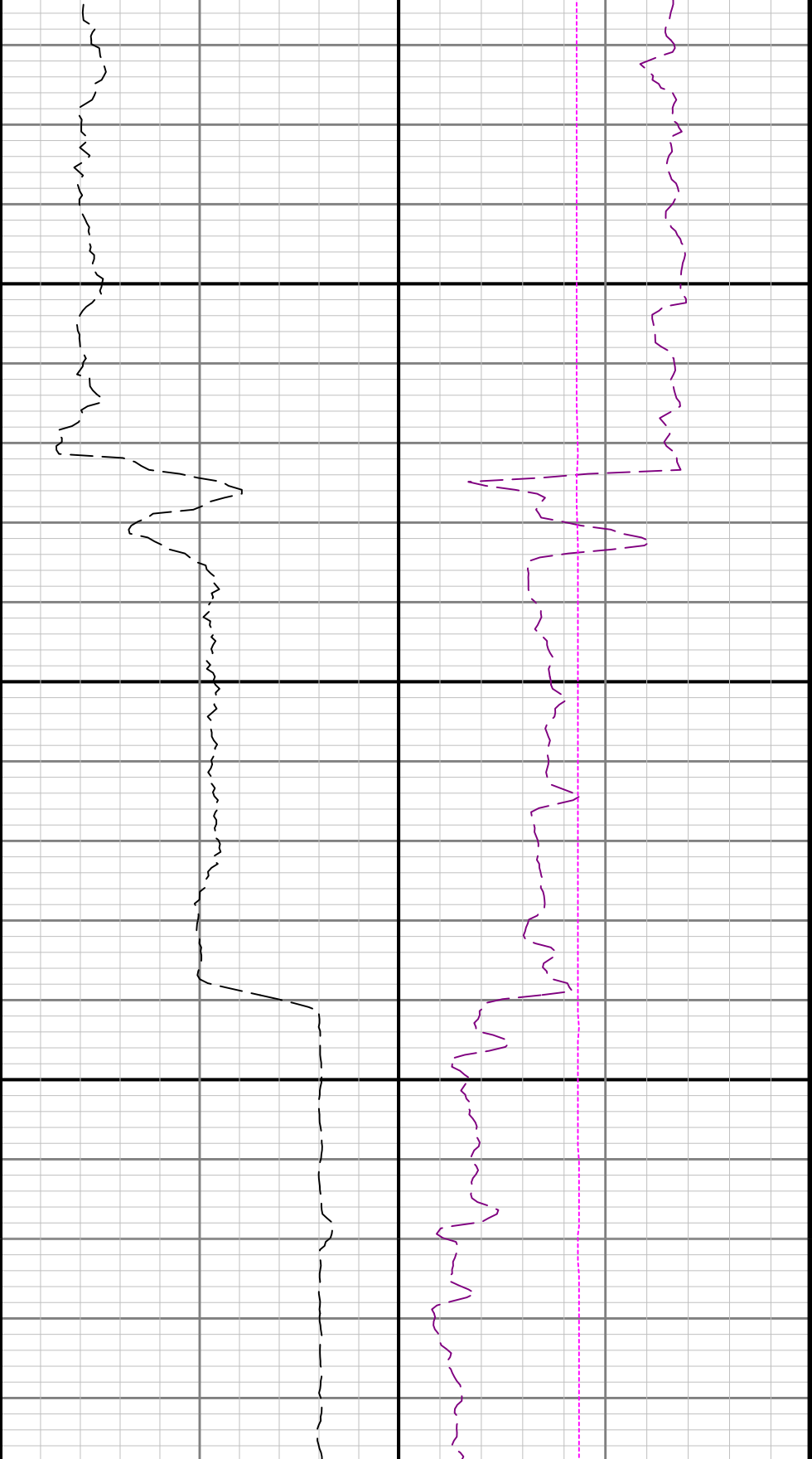


3200

3300

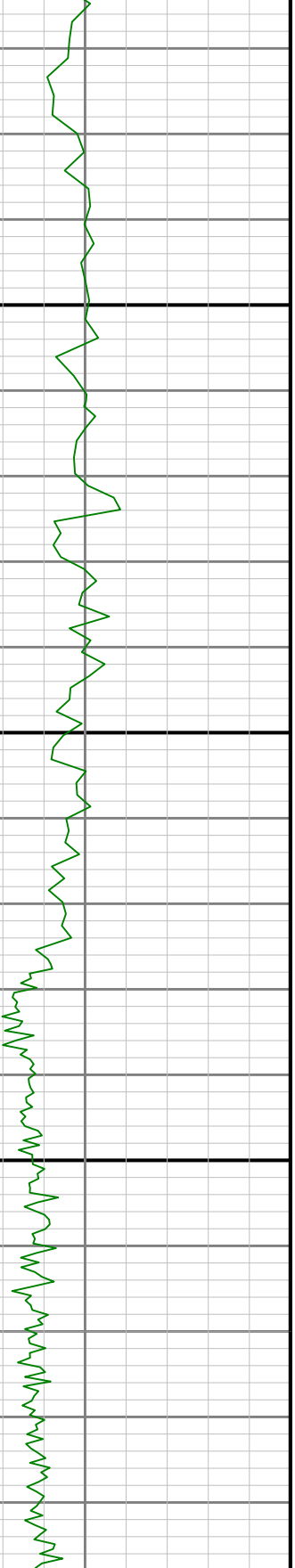


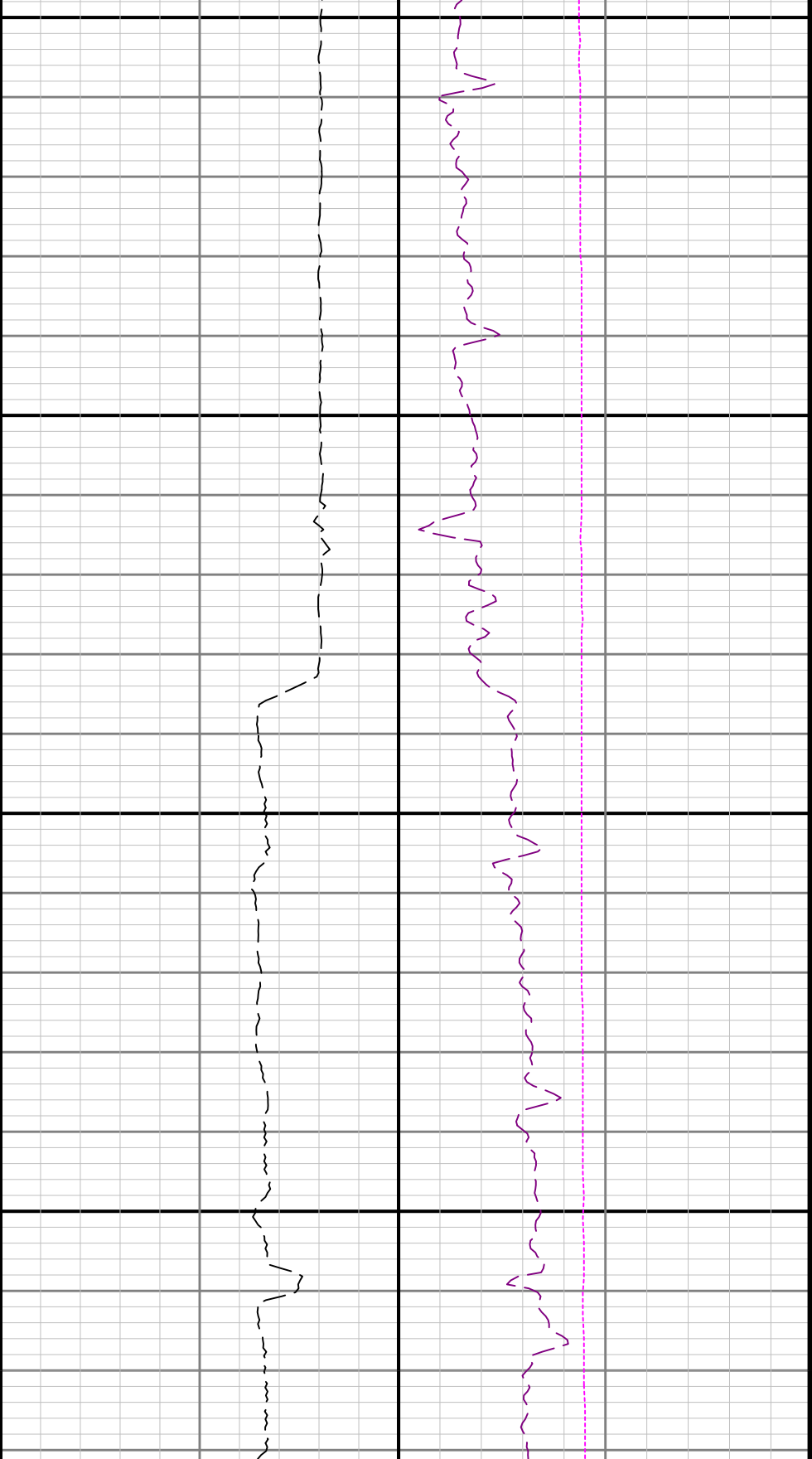




3600

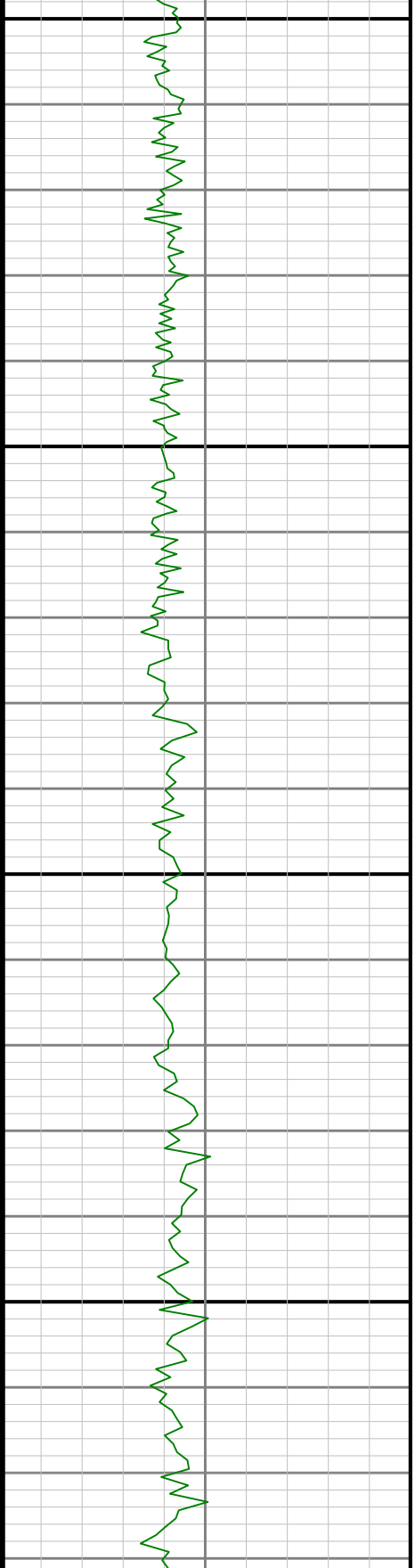
3700

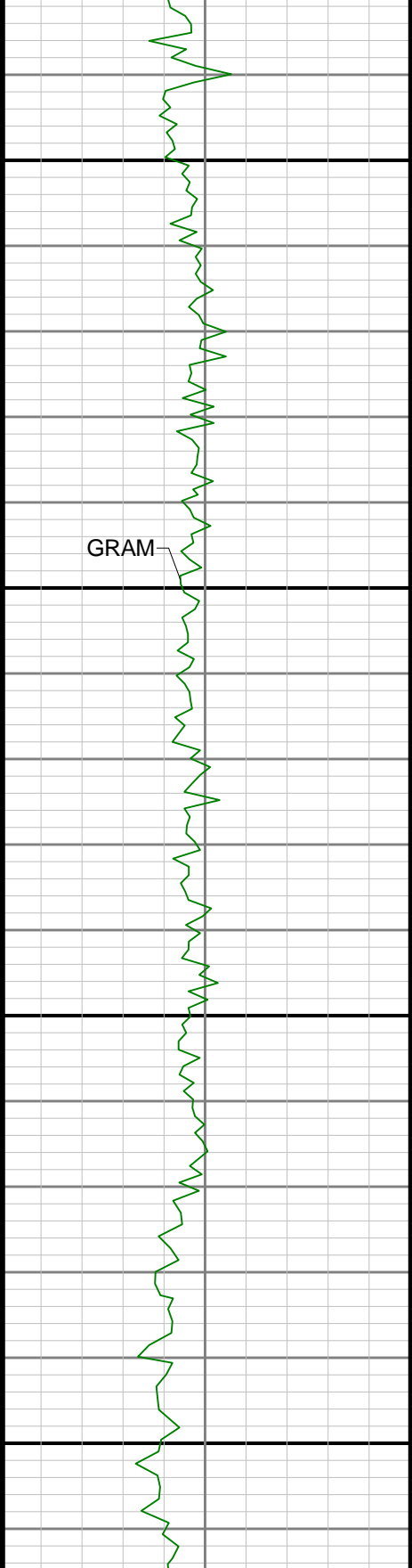




3800

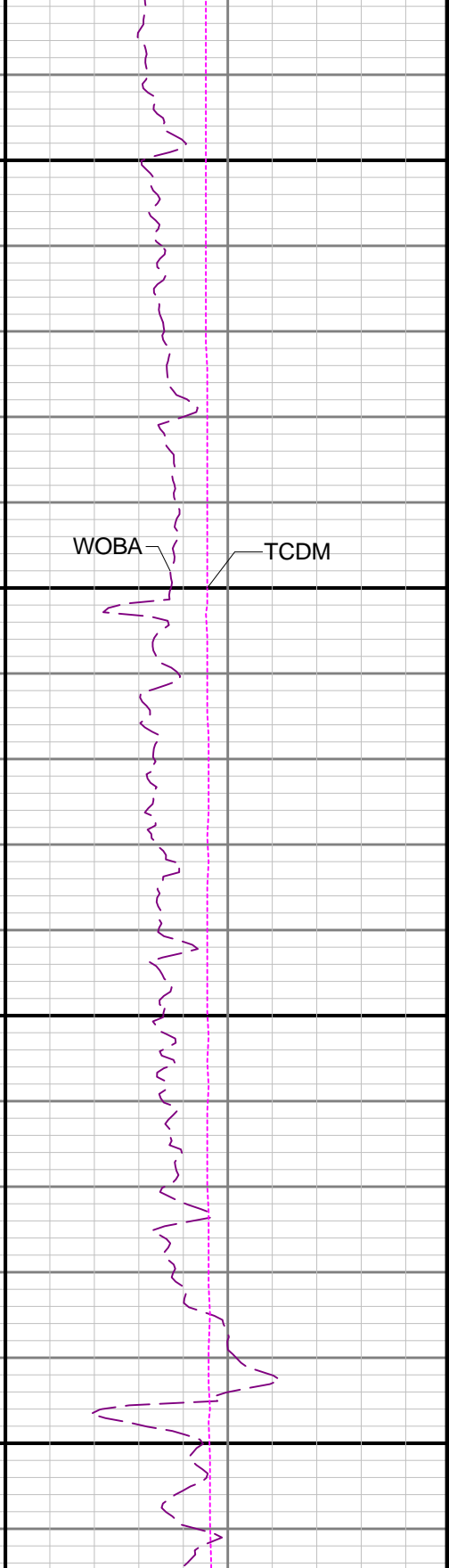
3900

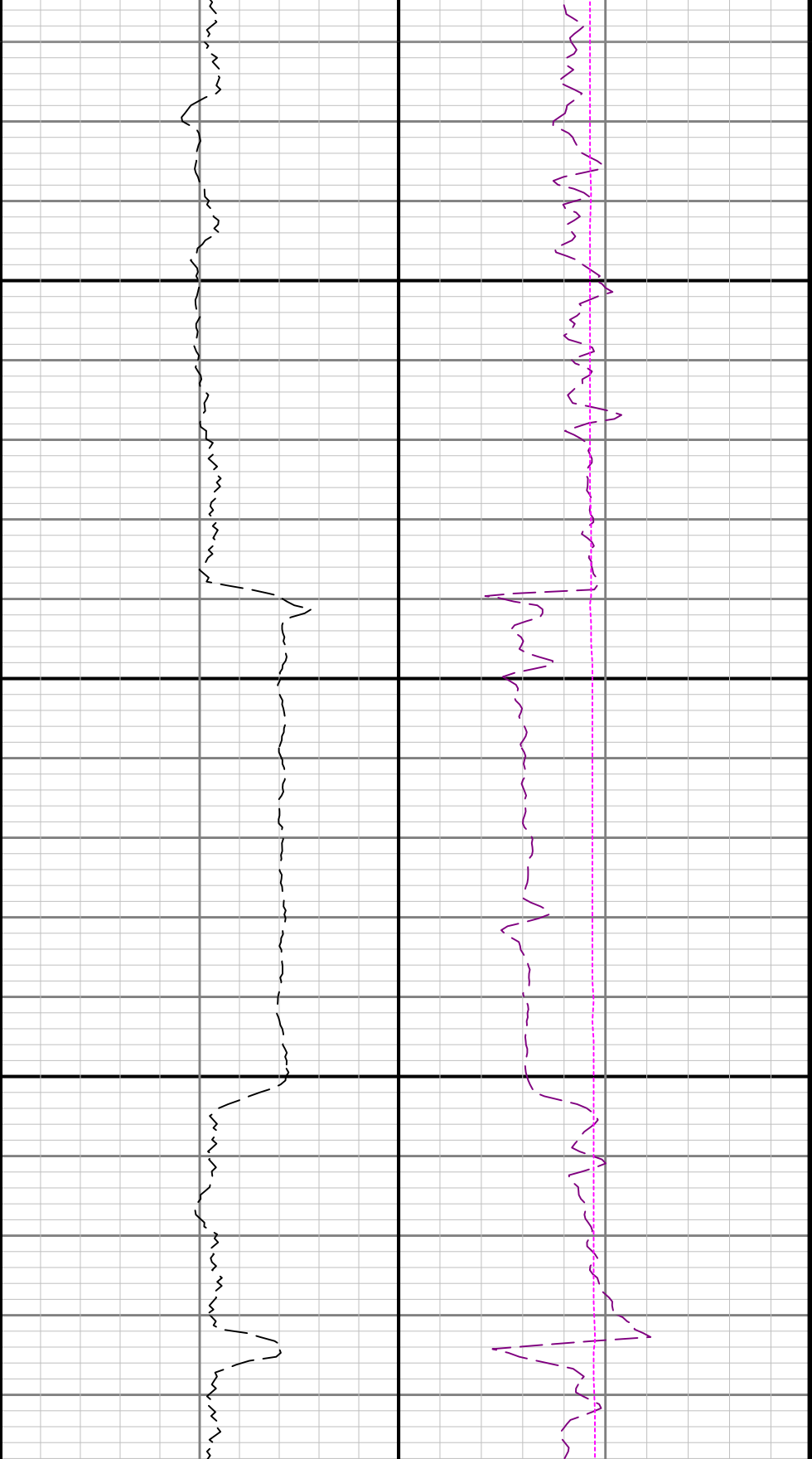




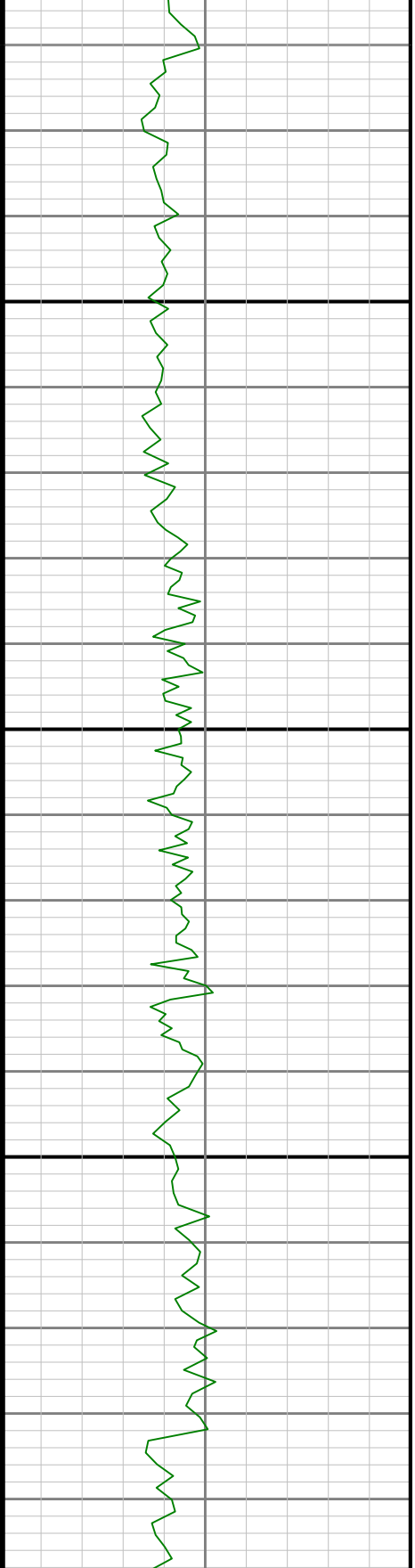
4000

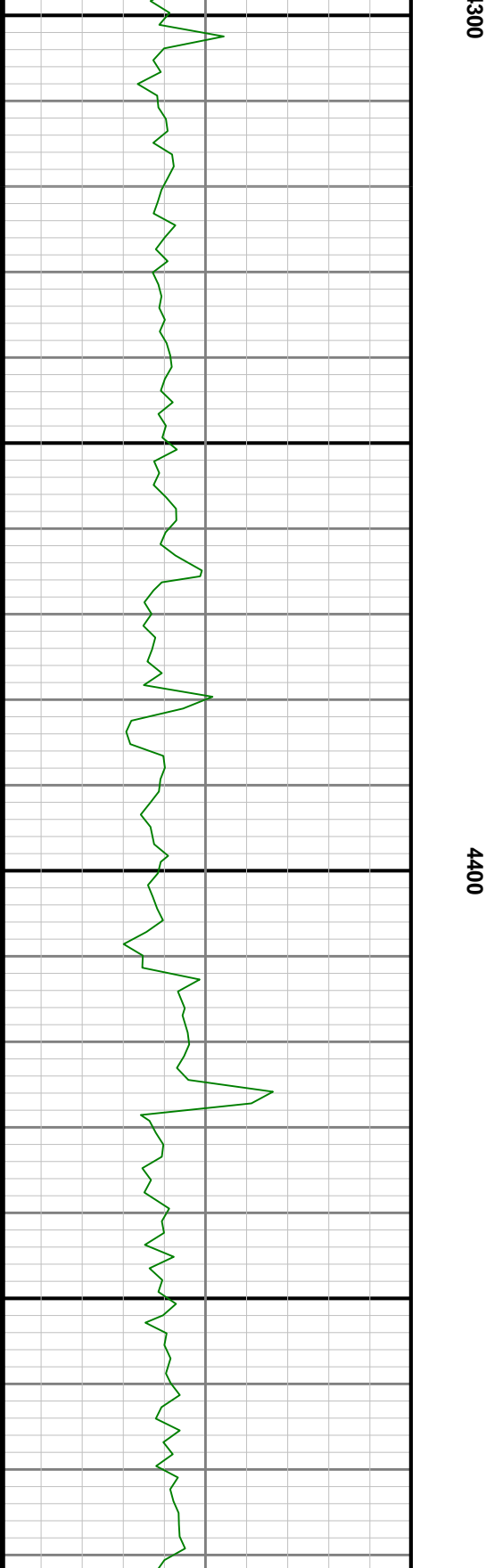
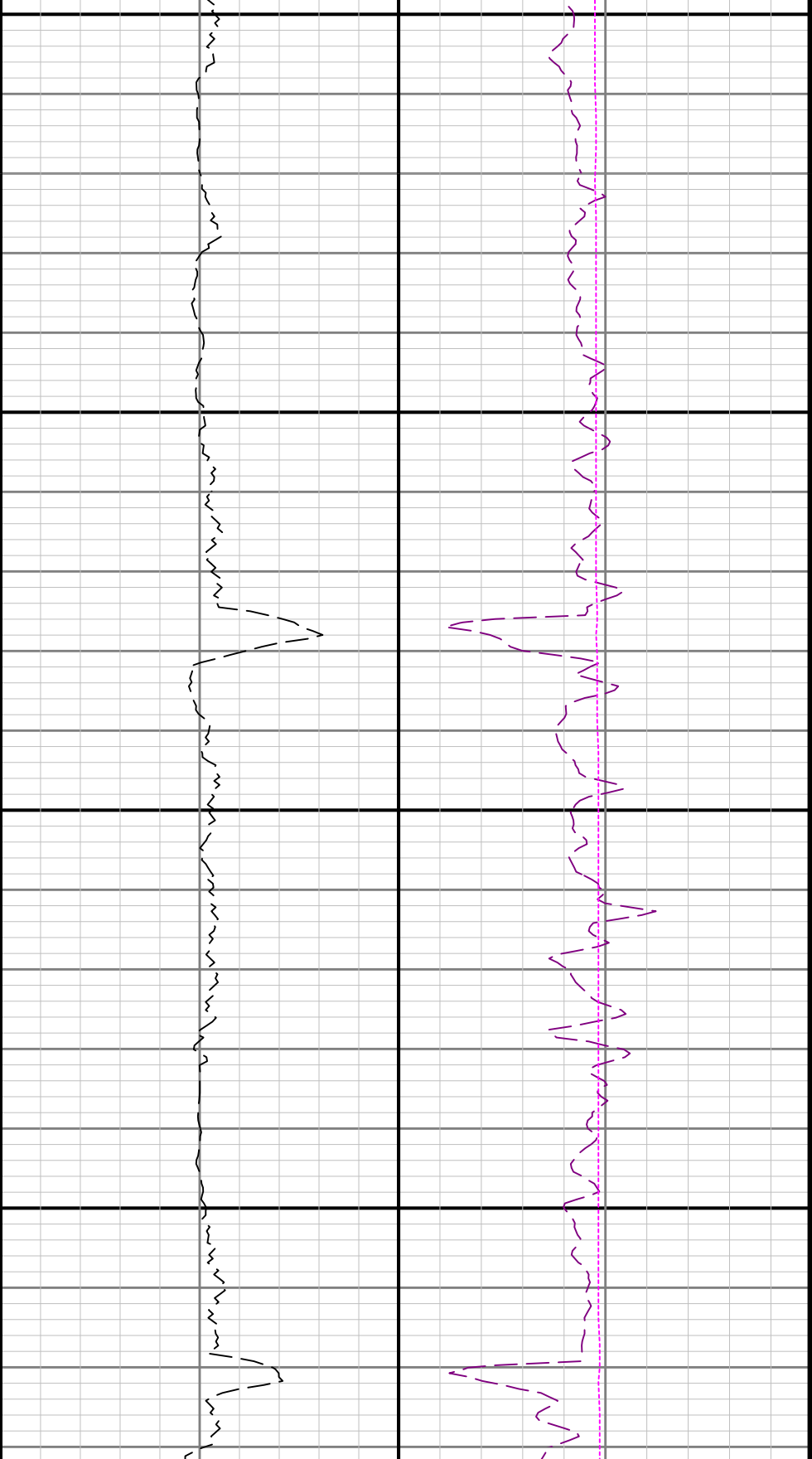
4100

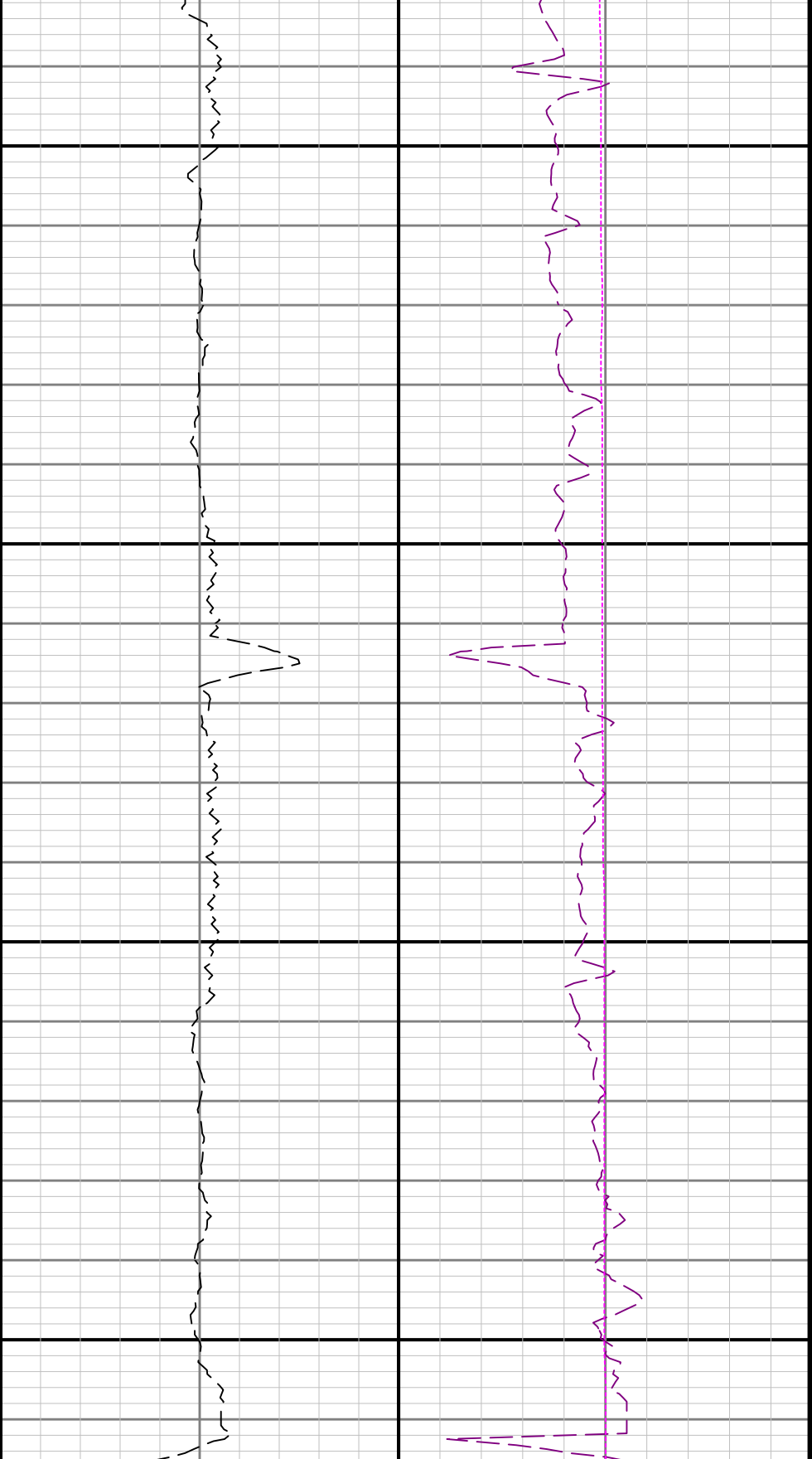




4200

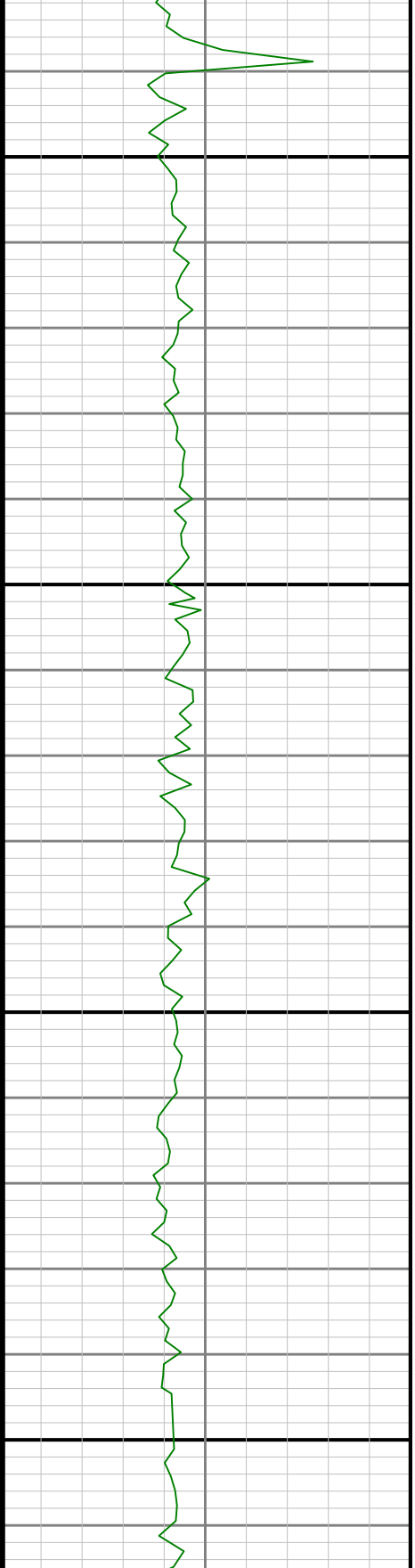


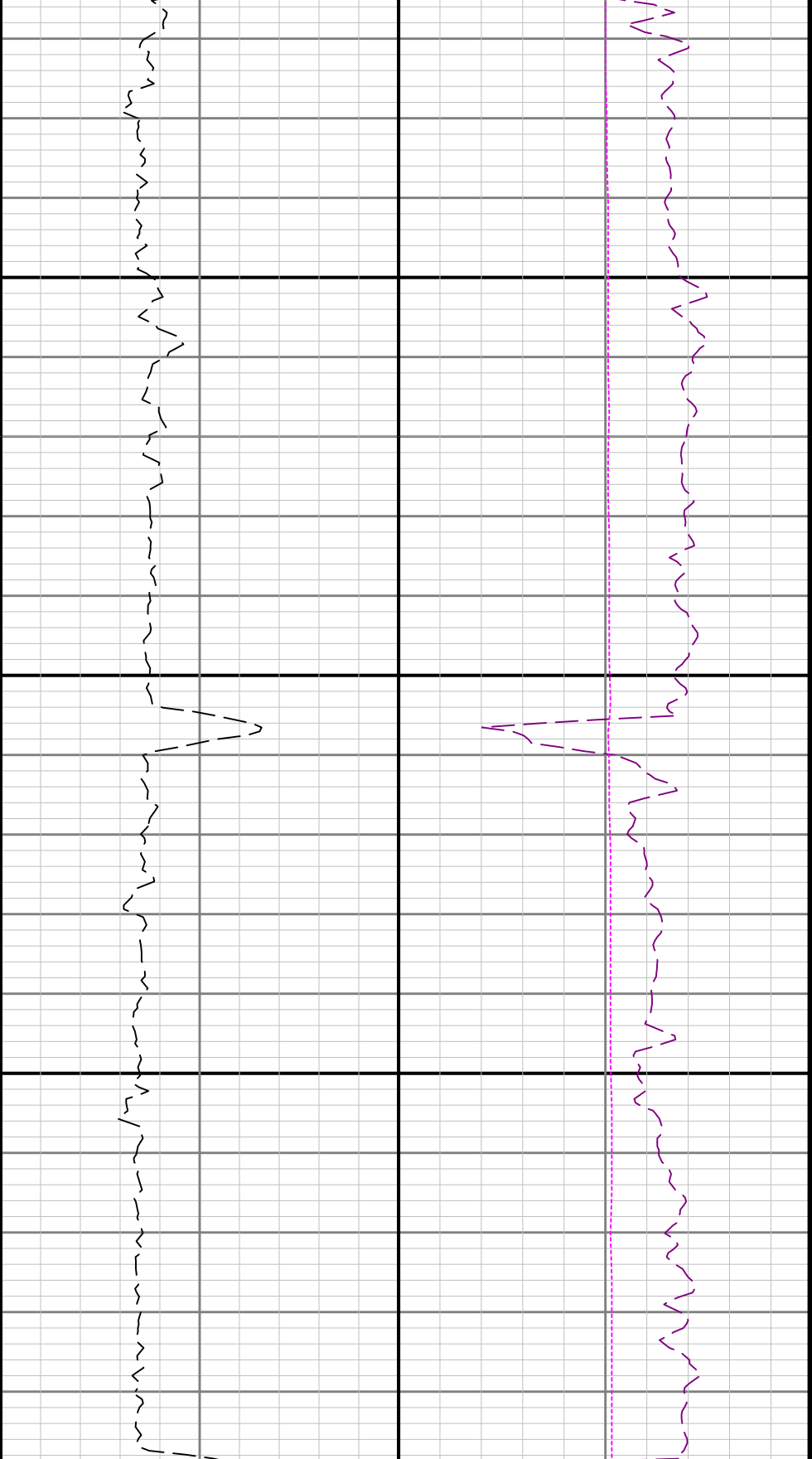




4500

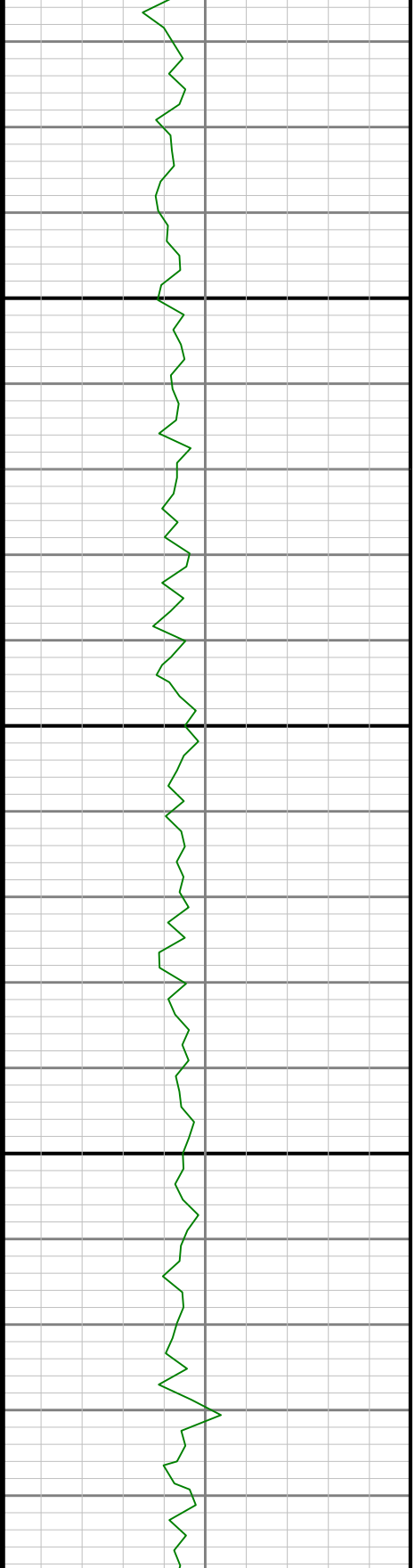
4600

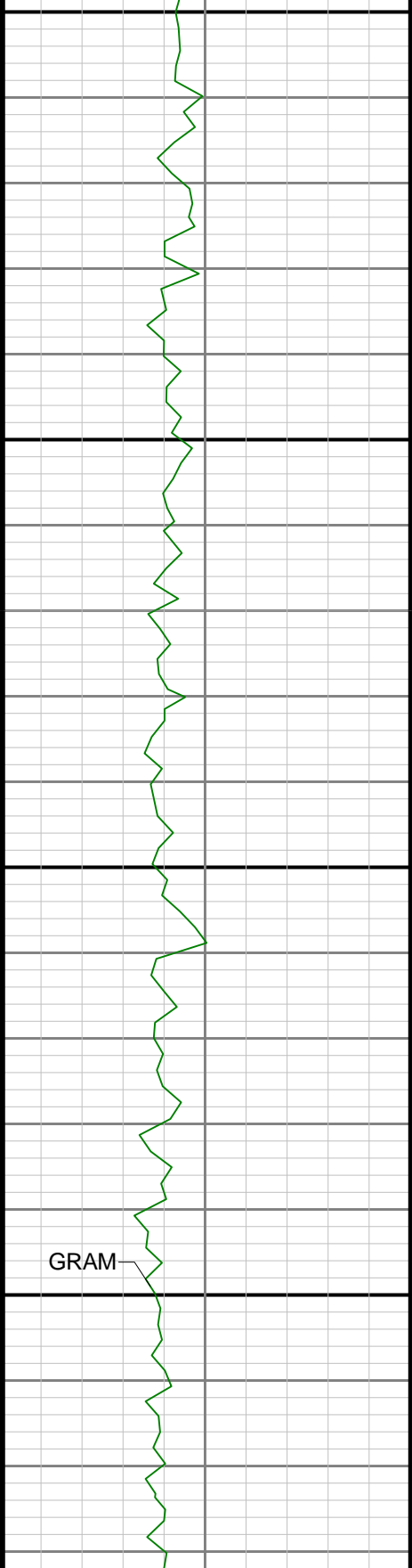




4700

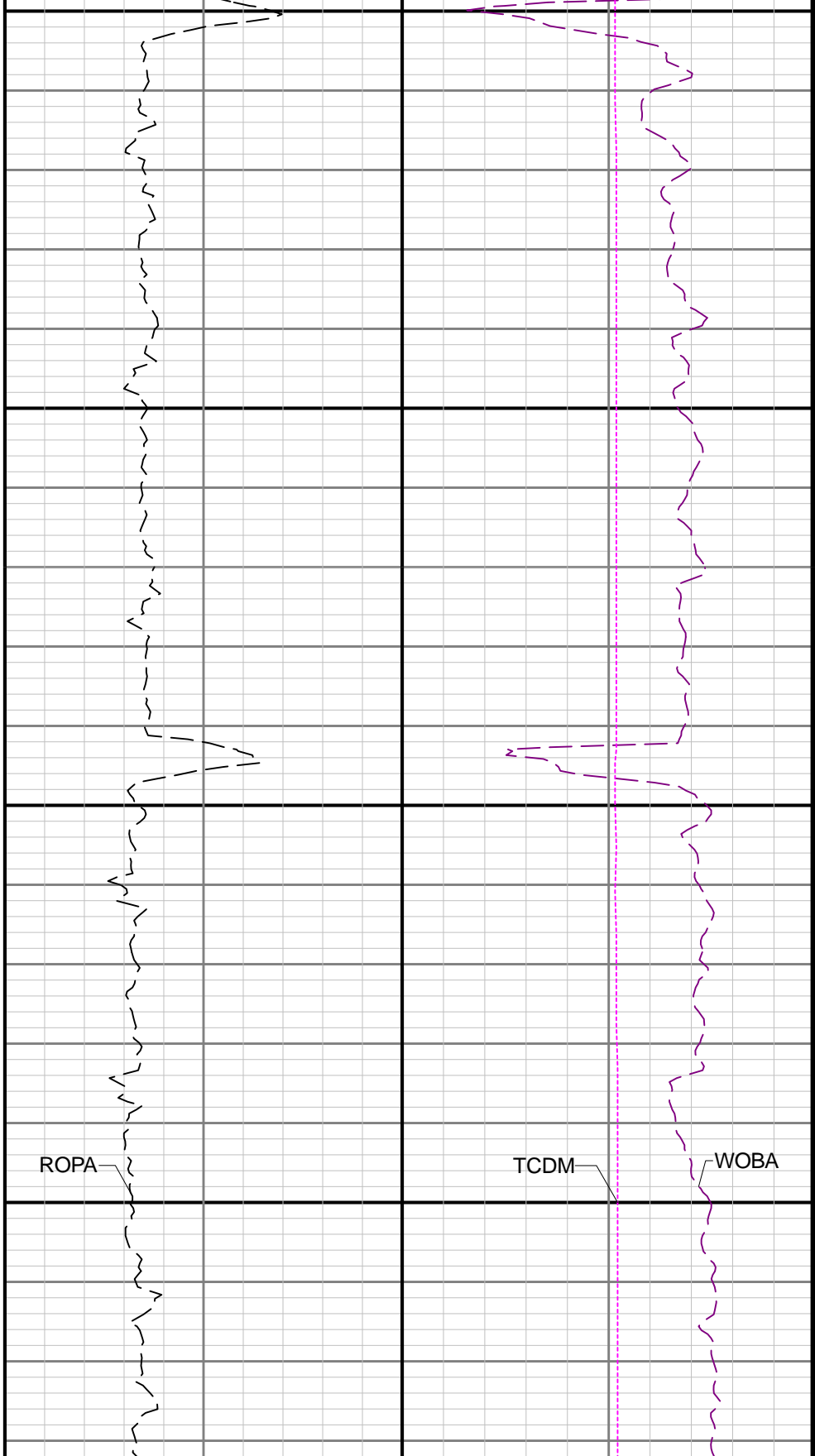
4800

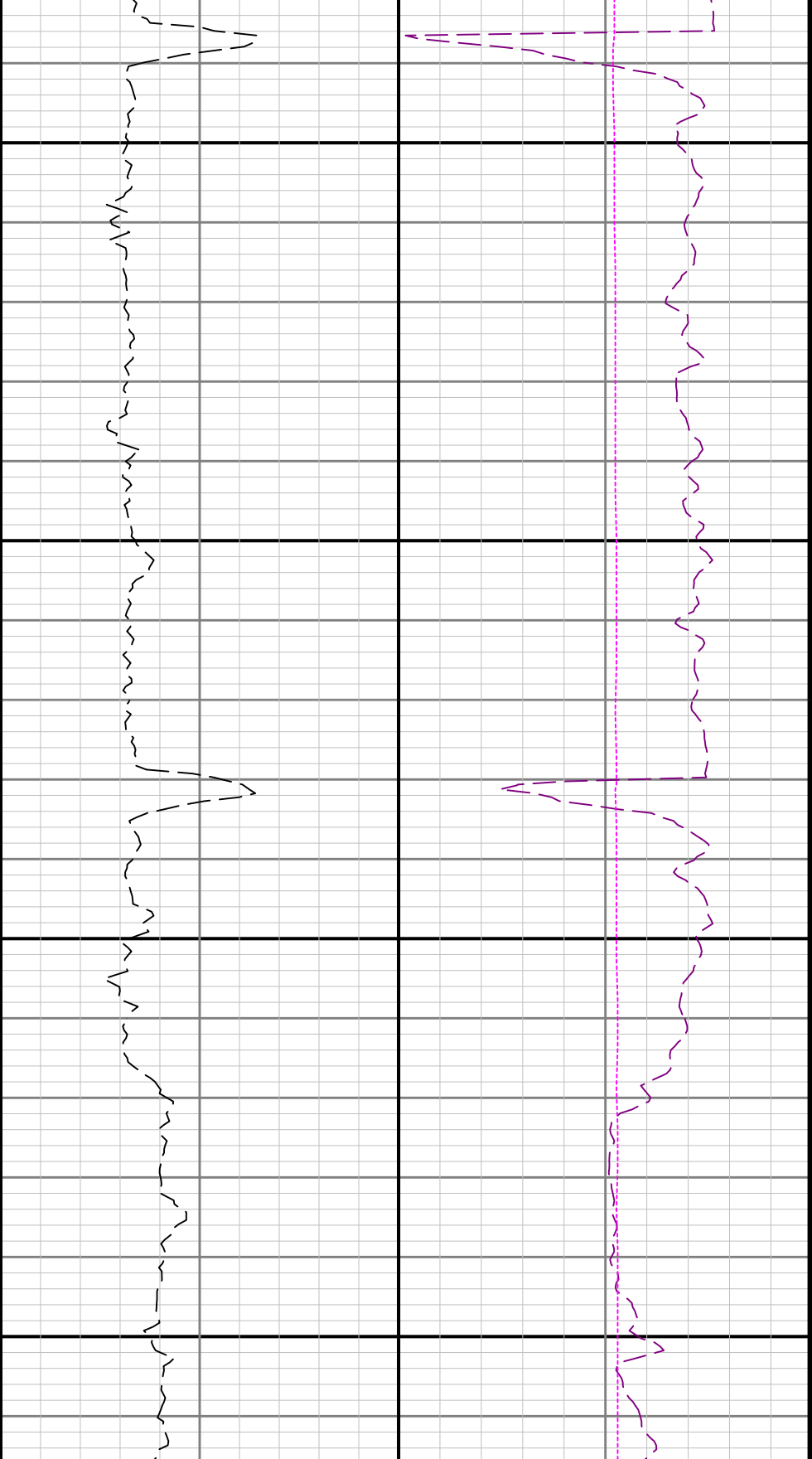




4900

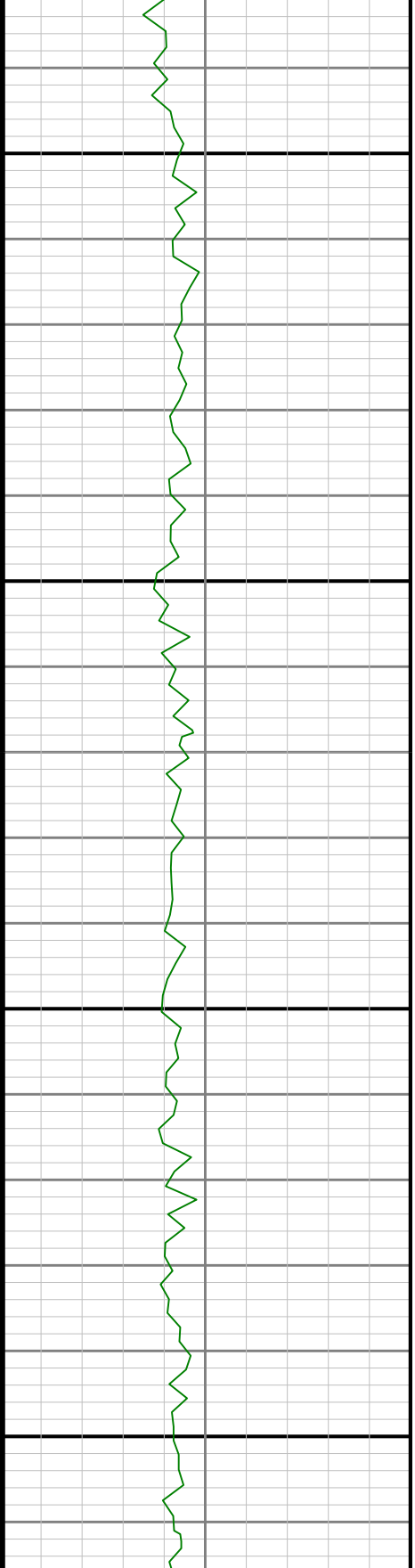
5000

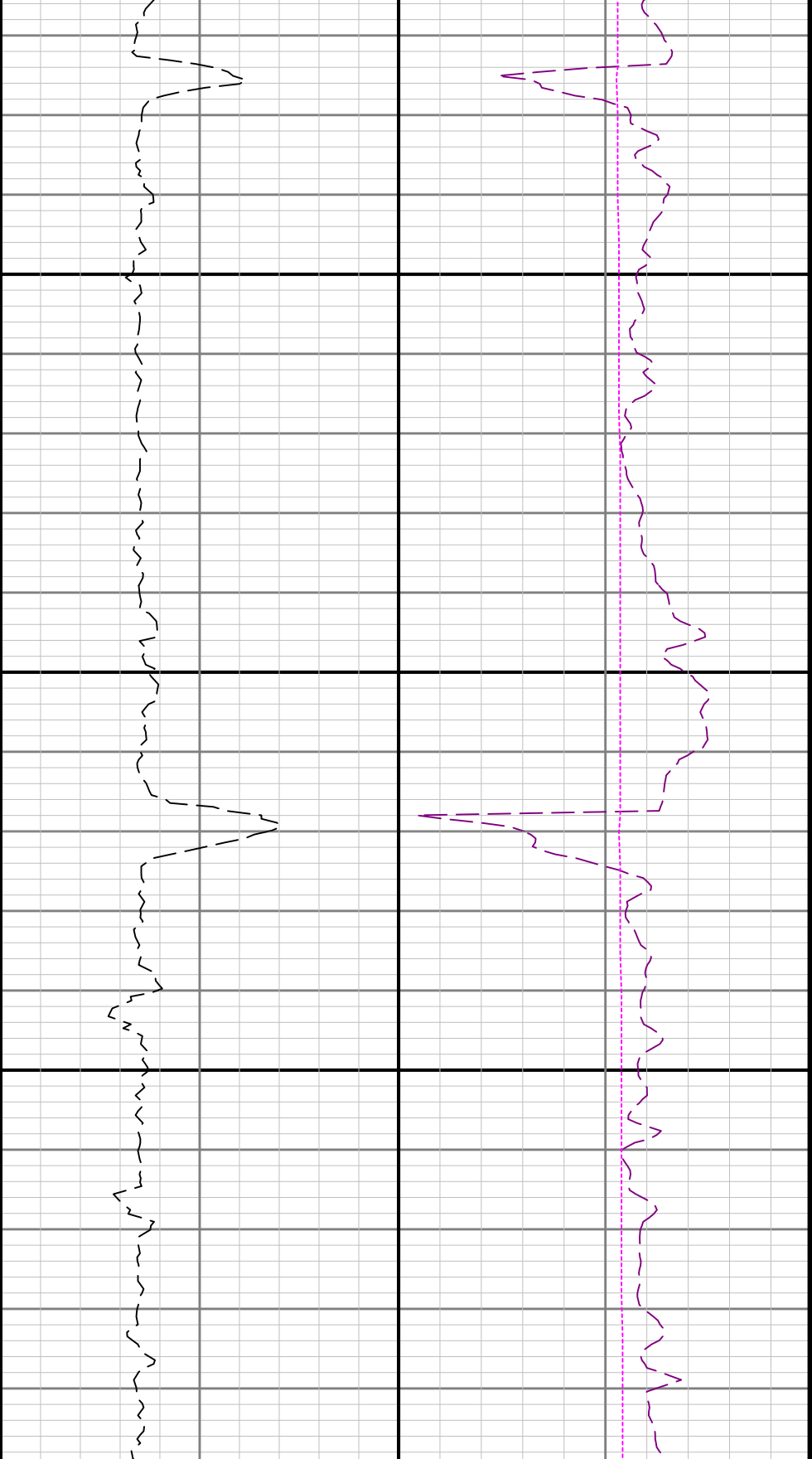




5100

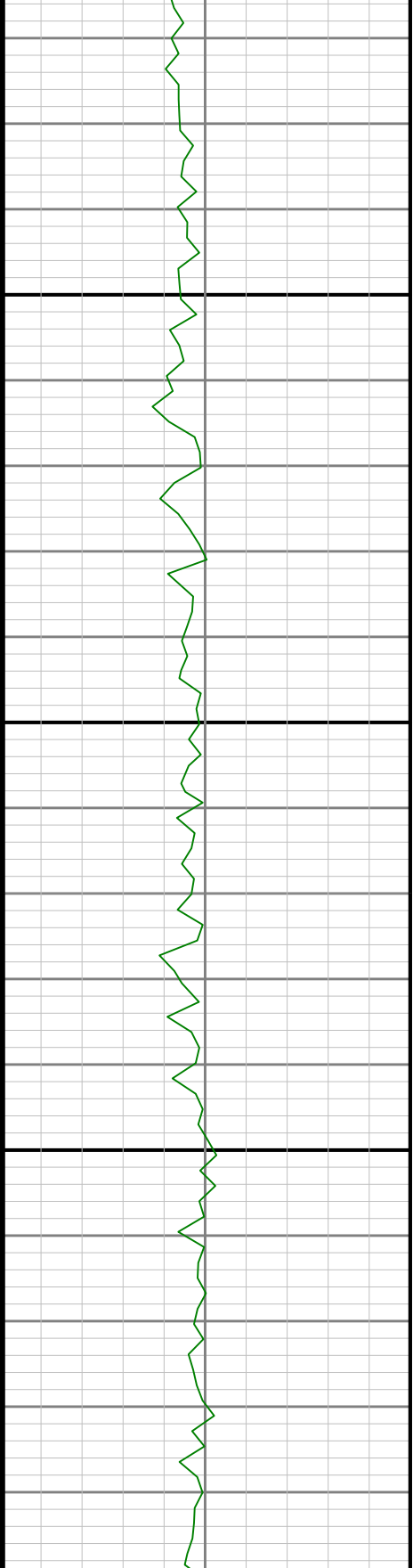
5200

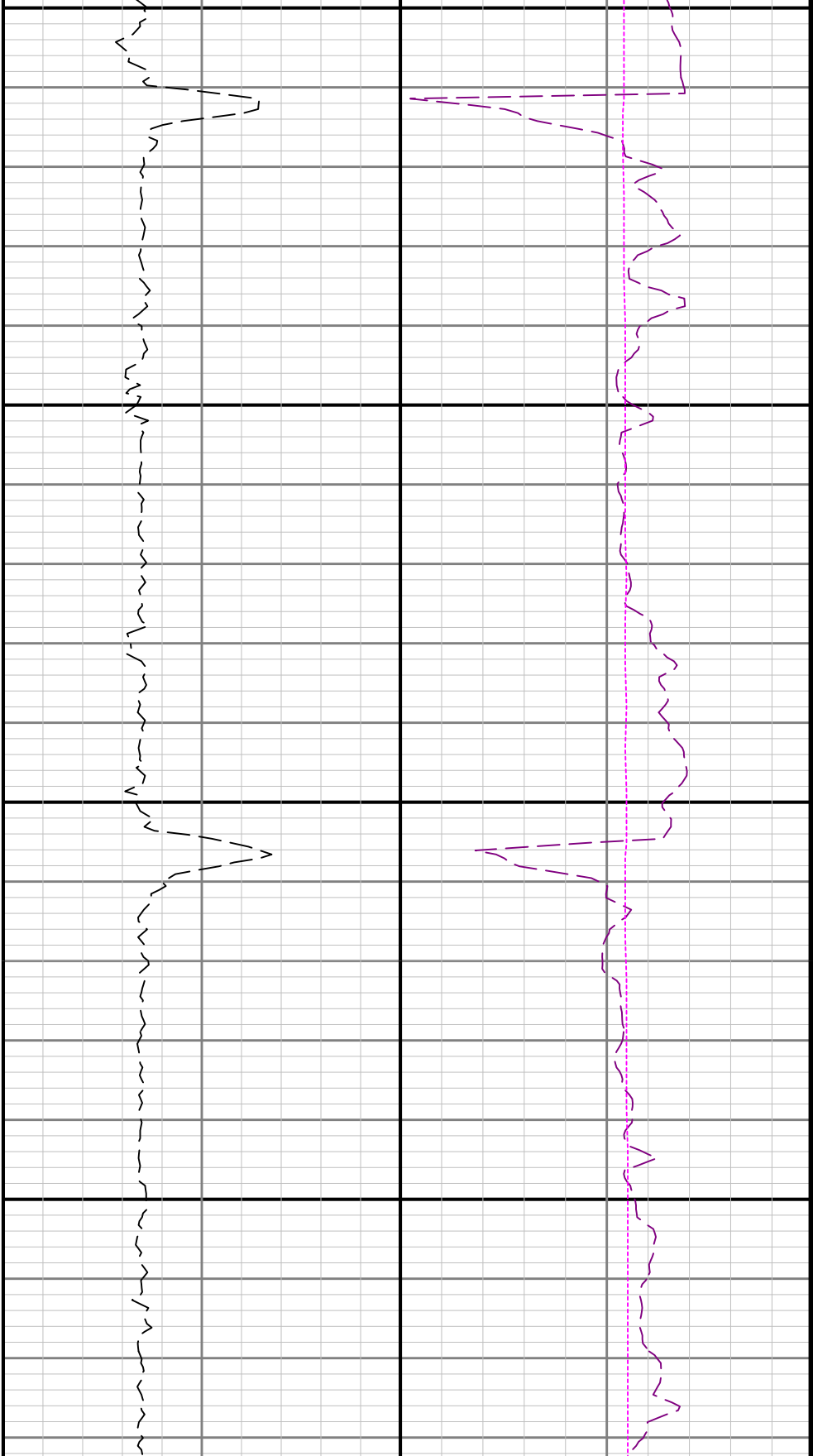




5300

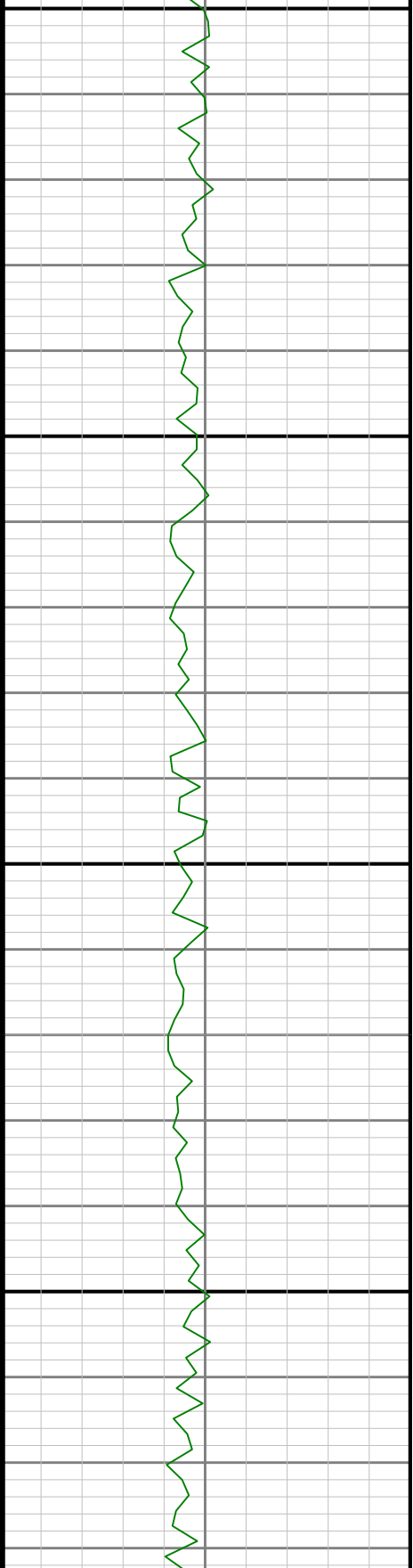
5

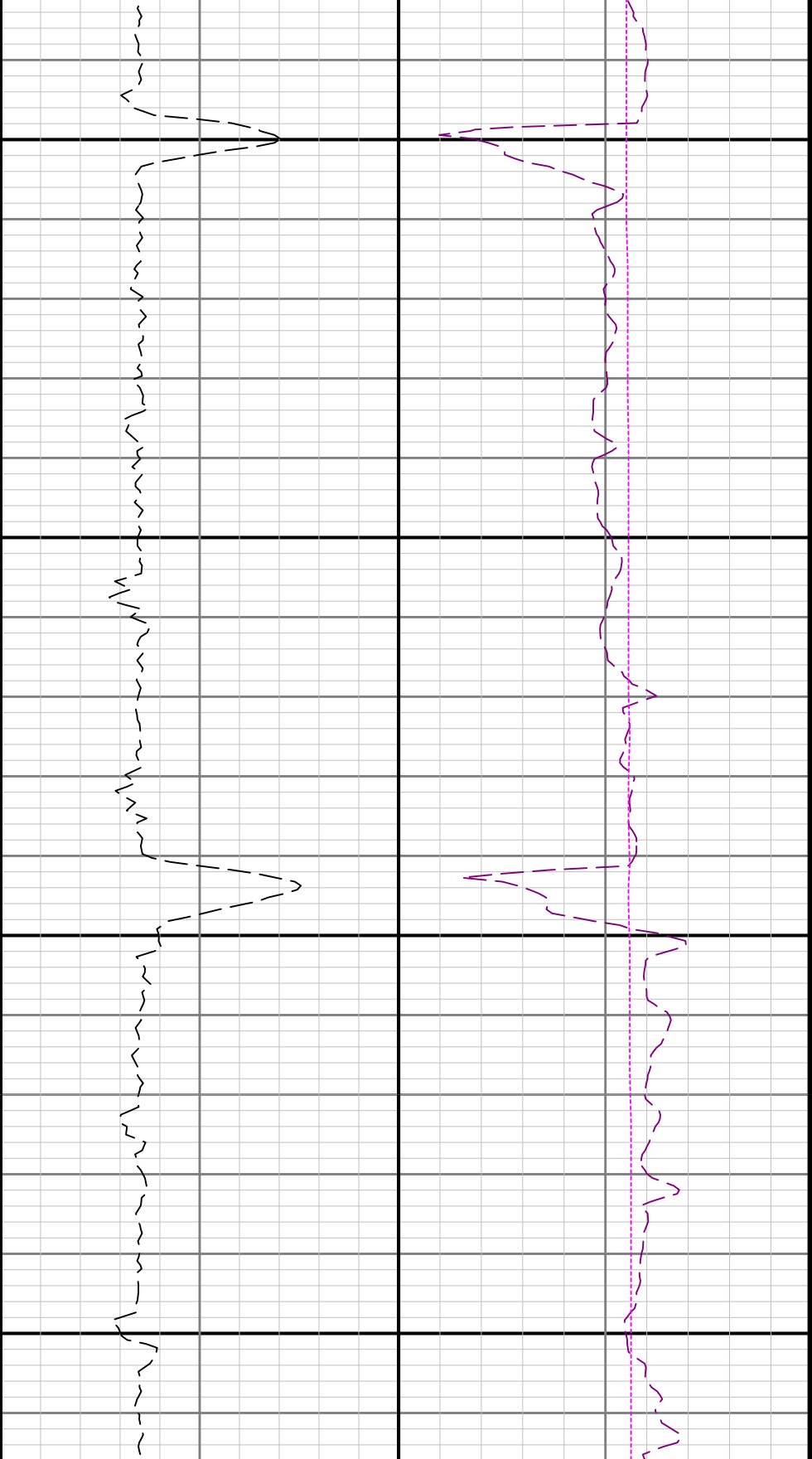




400

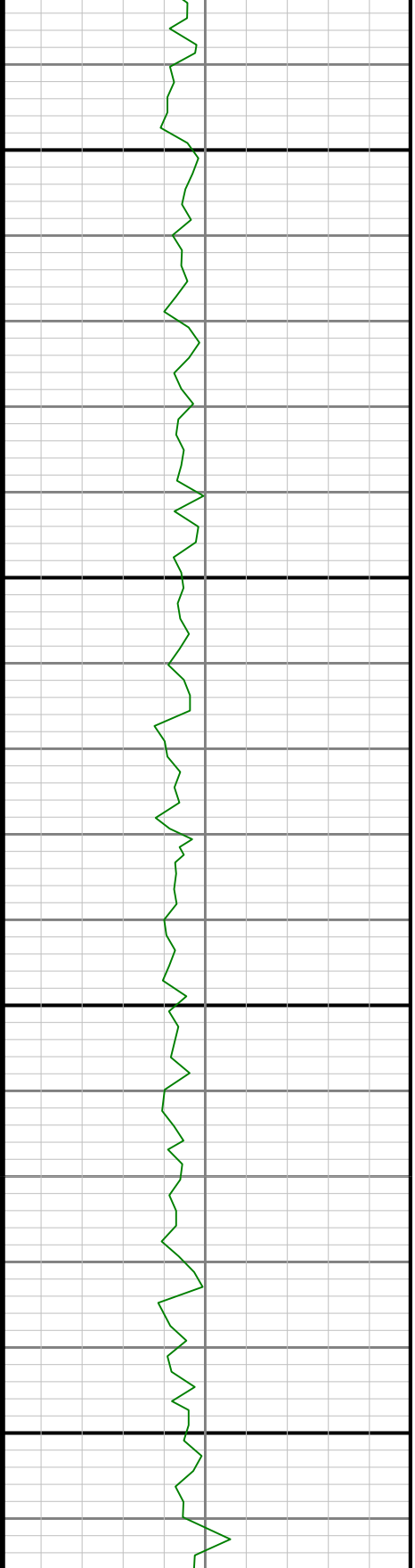
5500

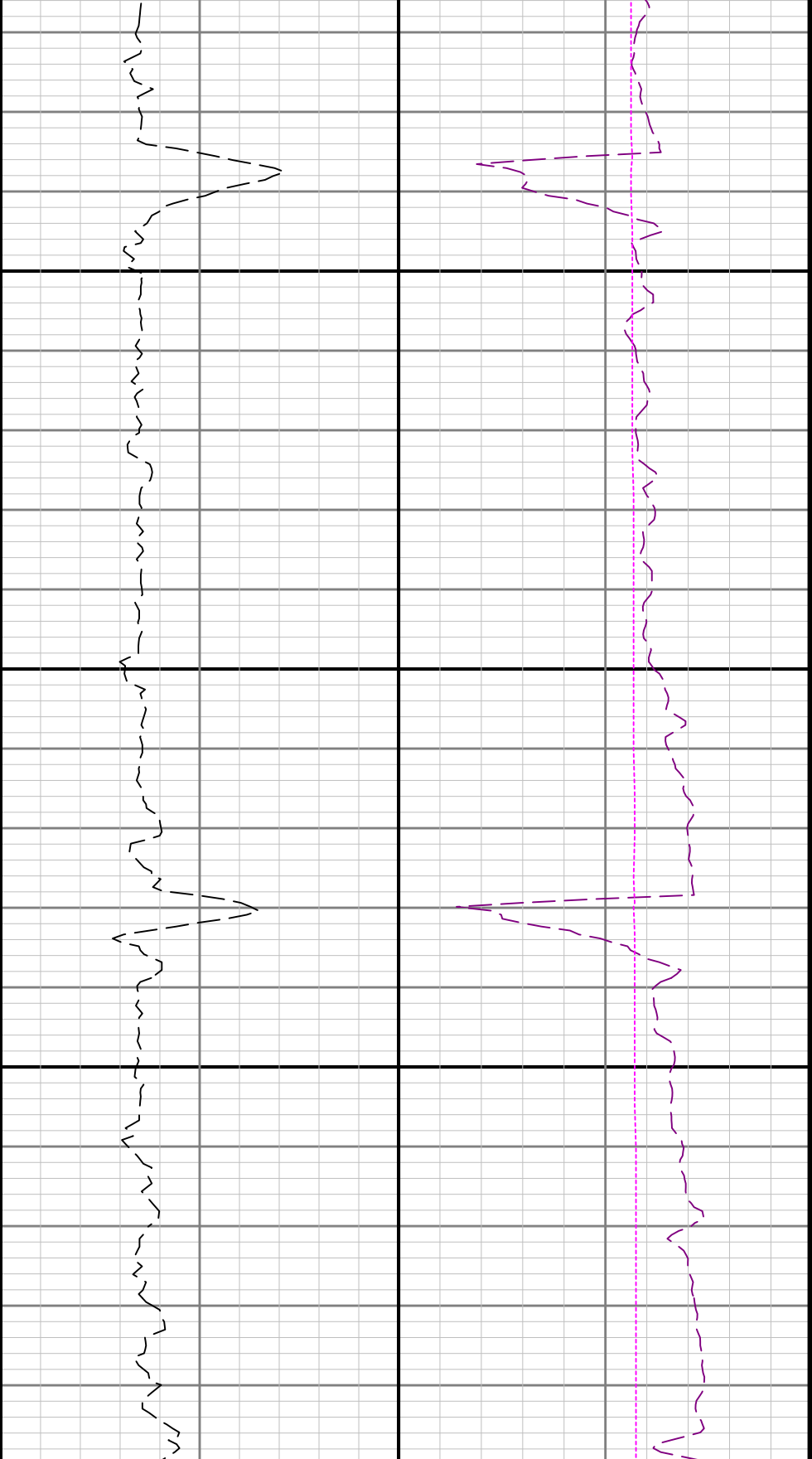




5600

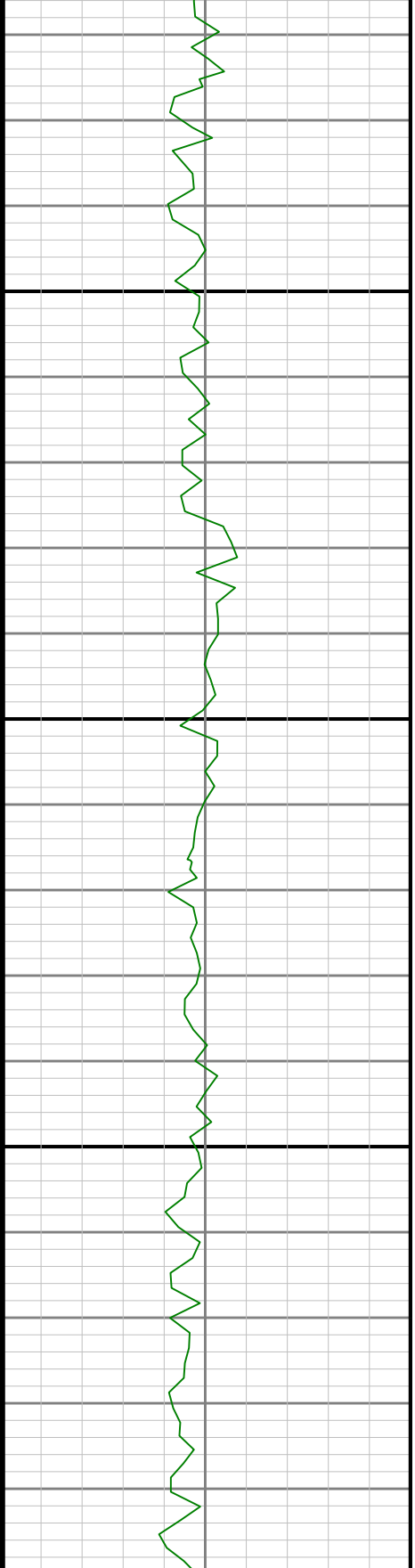
5700

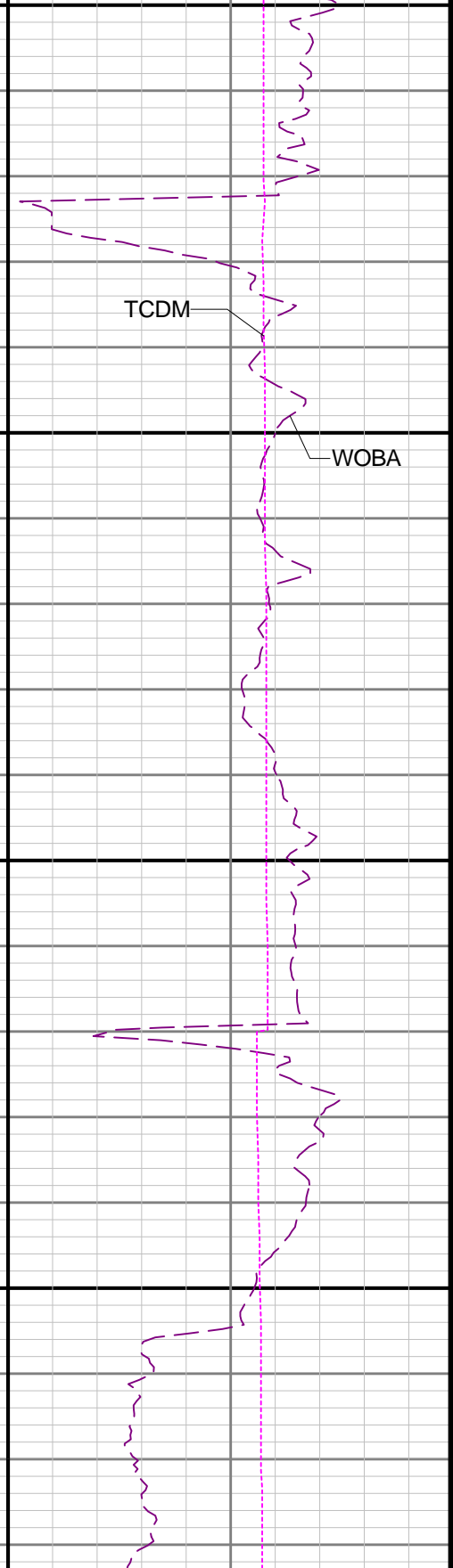
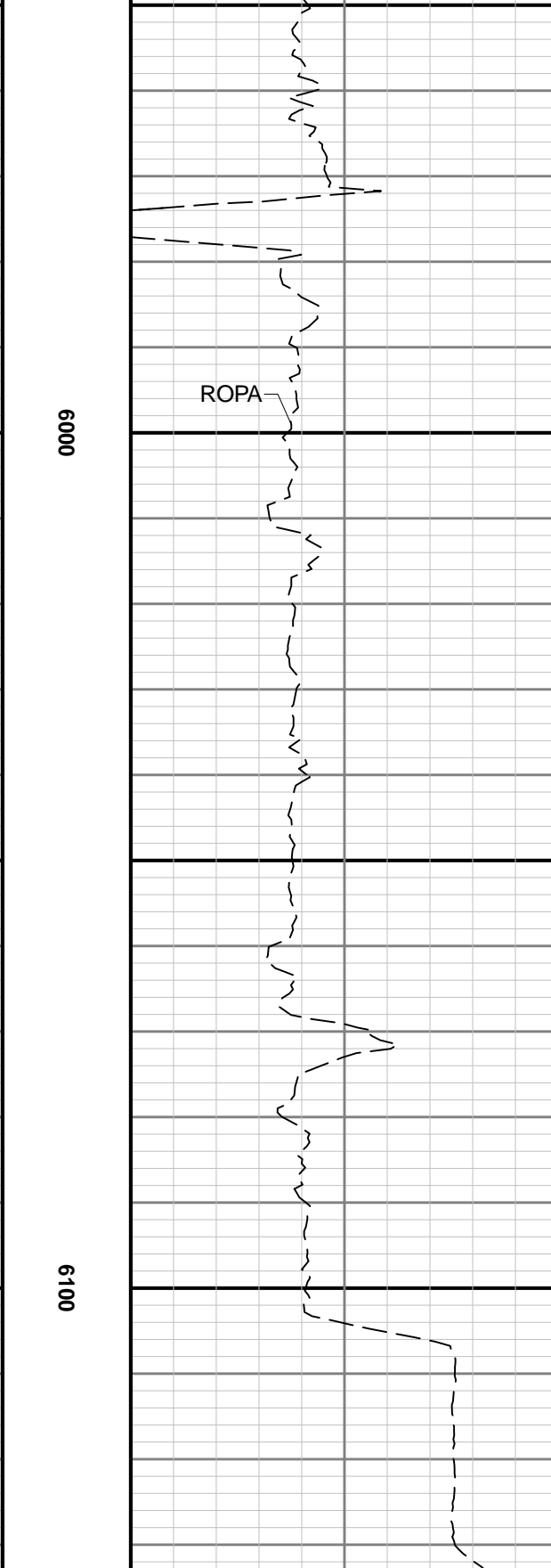
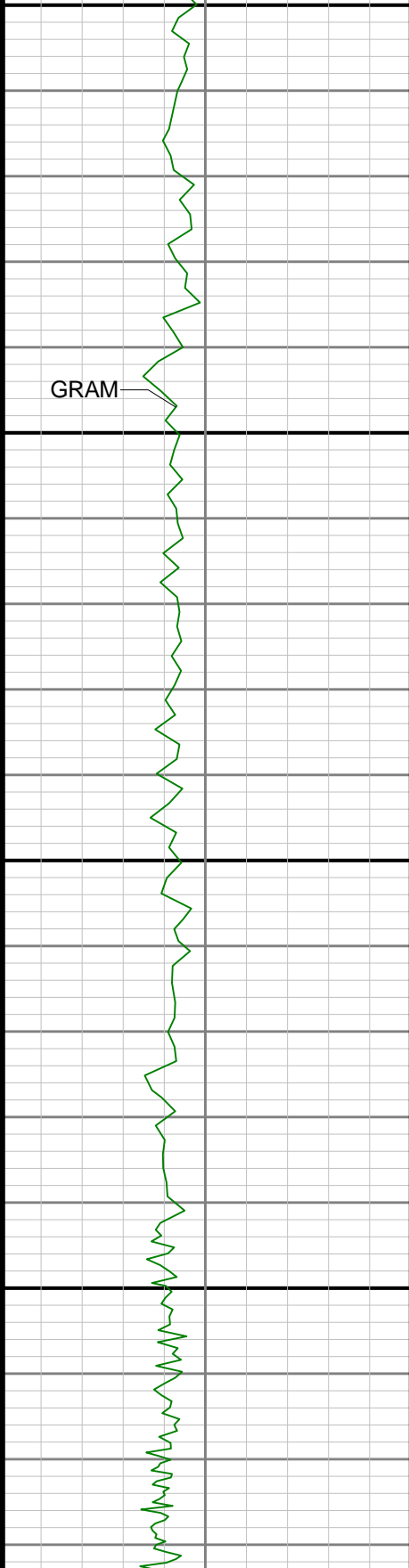


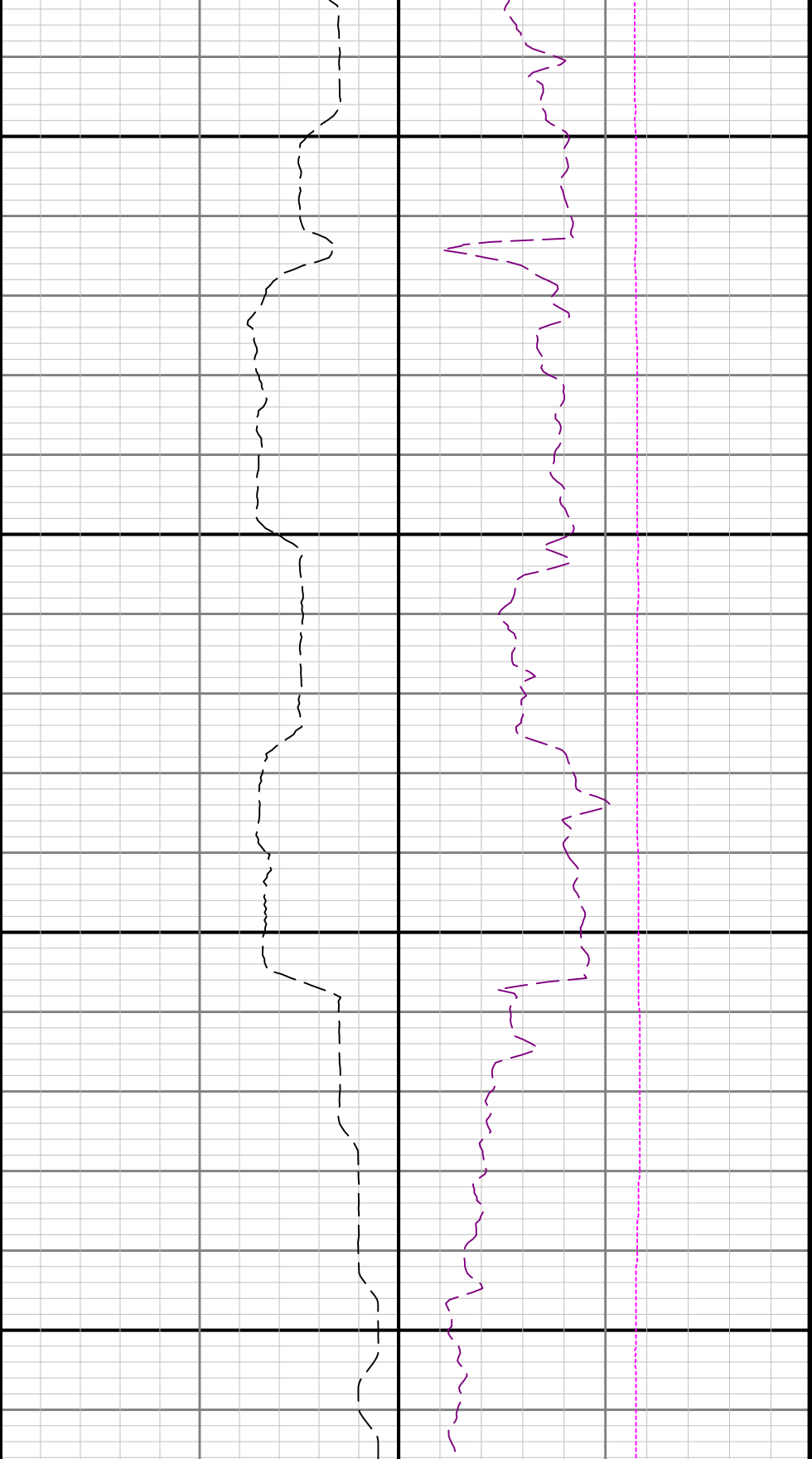


5880

5890

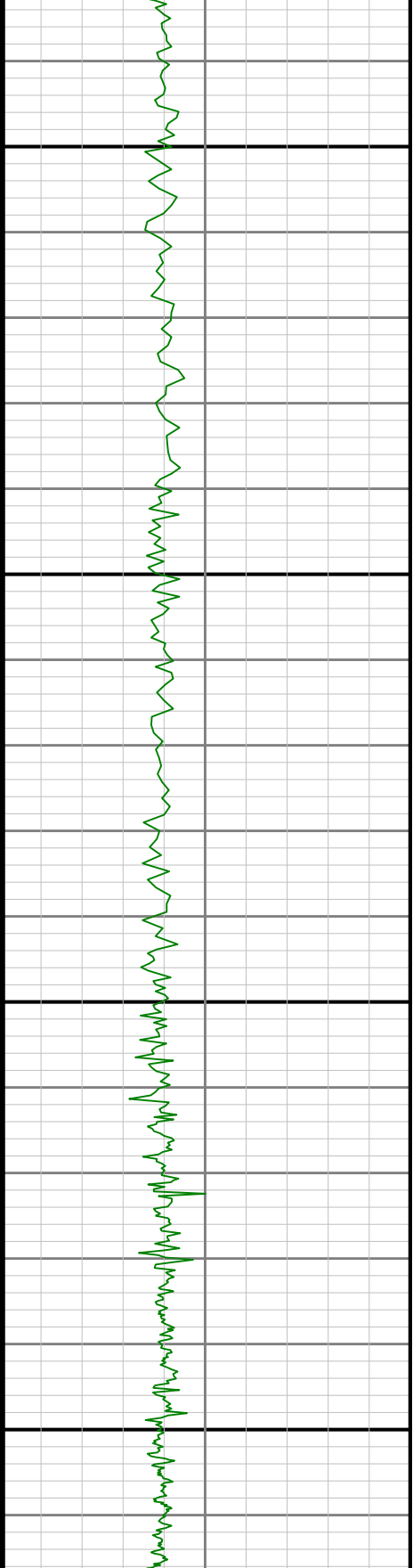


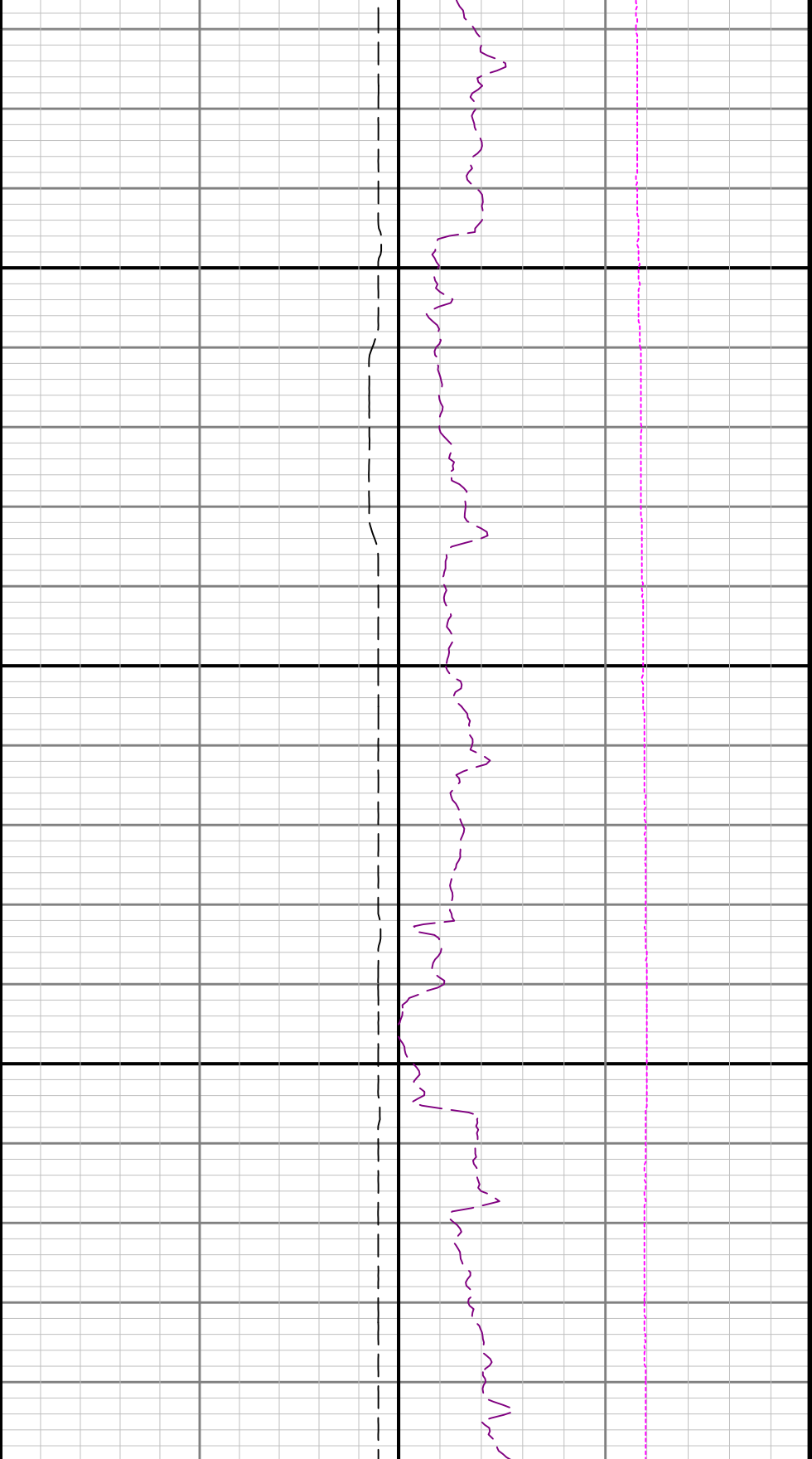




6200

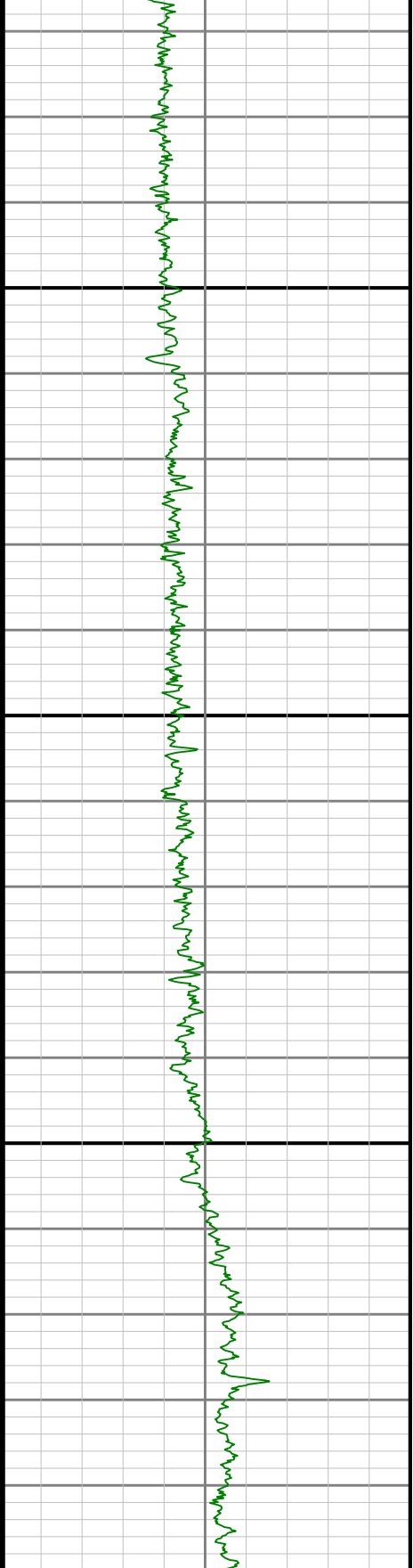
6300

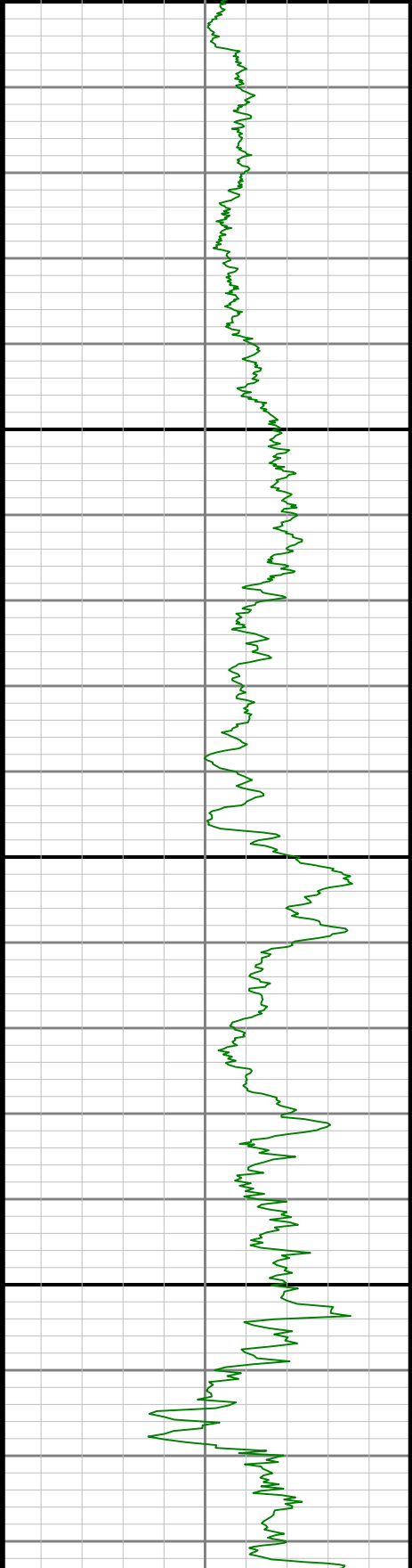




6400

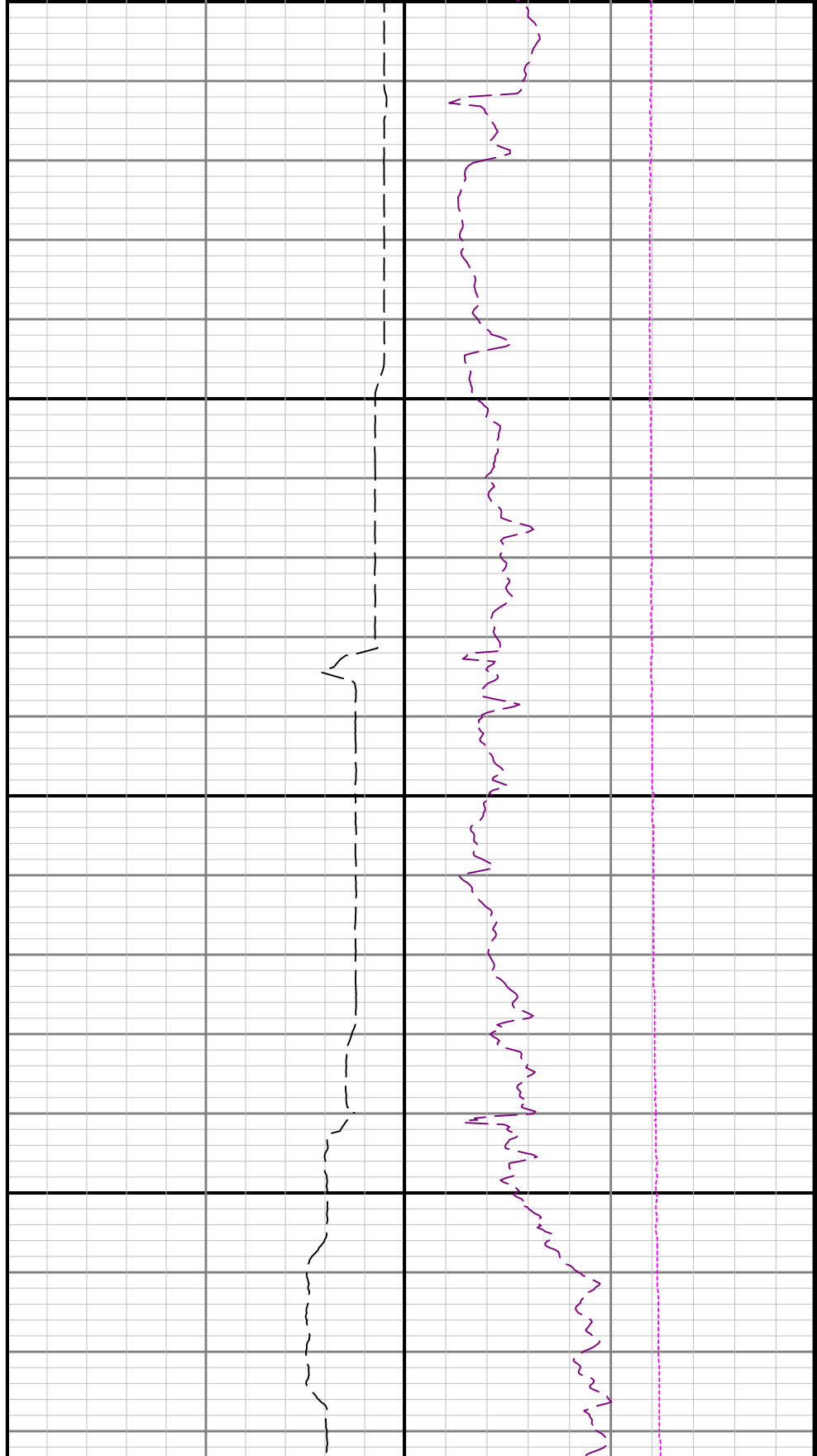
65

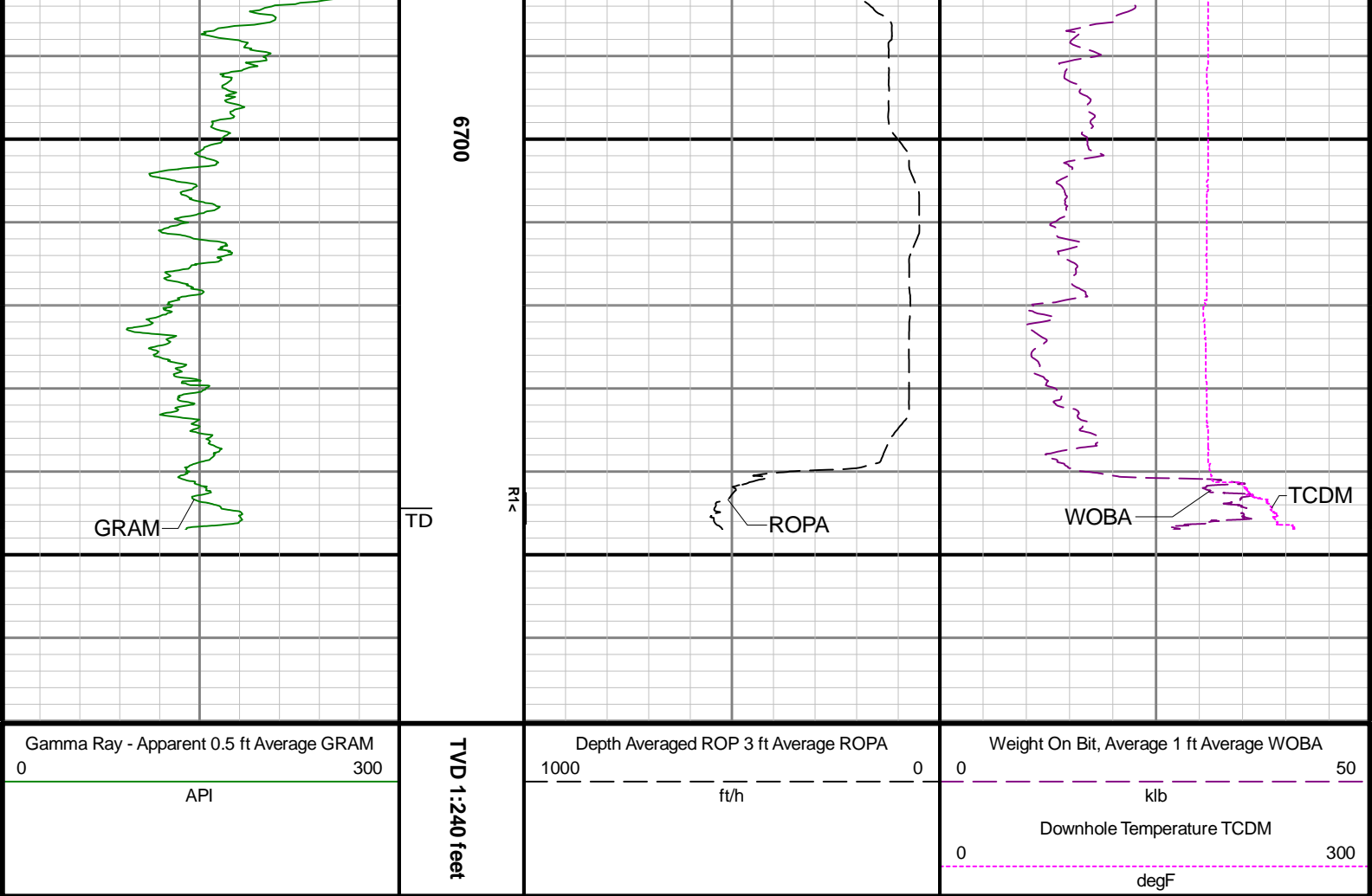




0099

00





Directional Survey Summary													
Latitude:		40° 15' 46.890" N				Longitude:		104° 33' 36.328" W					
North Reference:		Grid				Drill Depth Zero:		Rig Floor					
Vertical Datum is:		Mean Sea Level				Vertical Datum to DDZ: (ft)		4755.00					
Vertical Section North: (ft)		0.00				Vertical Section East: (ft)		0.00					
Vertical Section Azimuth: (deg)		182.15											
Grid Convergence: (deg)		-0.60				Magnetic Declination: (deg)		7.93					
Total Correction: (deg)		7.33				TVD Calculation Method:		Minimum Curvature					
Magnetic Correction:		Off				Local Magnetic Field: (nT)		51870					
Local Magnetic Dip Angle: (deg)		66.61				Local Gravity Field: (m/s2)		9.800					
Tie-In / Projection	Measured Depth (ft)	Inclination (deg)	Azimuth (deg)	Temperature (degF)	North (ft)	East (ft)	True Vertical Depth (ft)	TVD Subsea (ft)	Vertical Section (ft)	Course Length (ft)	Dog Leg Severity (deg/100ft)	Build Rate (deg/100ft)	Turn Rate (deg/100ft)
Tie-In	0.00	0.00	0.00	N/A	0.00	0.00	0.00	-4755.00	0.00	0.00	0.00	0.00	0.00
	84.00	0.33	314.61	N/A	0.17	-0.17	84.00	-4671.00	-0.16	84.00	0.39	0.39	-54.04
	177.00	0.25	323.04	N/A	0.52	-0.48	177.00	-4578.00	-0.50	93.00	0.10	-0.09	9.06
	267.00	0.06	294.87	N/A	0.70	-0.65	267.00	-4488.00	-0.67	90.00	0.22	-0.21	-31.30
	331.00	0.67	252.26	N/A	0.60	-1.03	331.00	-4424.00	-0.56	64.00	0.98	0.95	-66.58
	425.00	0.10	229.20	N/A	0.38	-1.62	424.99	-4330.01	-0.31	94.00	0.62	-0.61	-24.53
	520.00	0.37	304.60	N/A	0.50	-1.93	519.99	-4235.01	-0.42	95.00	0.38	0.28	79.37
	615.00	0.42	329.20	N/A	0.97	-2.36	614.99	-4140.01	-0.88	95.00	0.18	0.05	25.89
	709.00	0.48	273.12	N/A	1.29	-2.93	708.99	-4046.01	-1.18	94.00	0.45	0.06	-59.66
	804.00	0.54	229.01	N/A	1.01	-3.67	803.99	-3951.01	-0.88	95.00	0.41	0.06	-46.43

	898.00	1.00	204.17	N/A	-0.02	-4.34	897.98	-3857.02	0.19	94.00	0.59	0.49	-26.43
	993.00	0.80	181.82	N/A	-1.44	-4.70	992.97	-3762.03	1.62	95.00	0.42	-0.21	-23.53
	1087.00	0.33	232.06	N/A	-2.27	-4.93	1086.96	-3668.04	2.45	94.00	0.68	-0.50	53.45
	1182.00	0.27	108.51	N/A	-2.51	-4.94	1181.96	-3573.04	2.69	95.00	0.56	-0.06	-130.05
	1276.00	0.25	50.77	N/A	-2.45	-4.57	1275.96	-3479.04	2.62	94.00	0.27	-0.02	-61.43
	1371.00	0.52	345.43	N/A	-1.90	-4.52	1370.96	-3384.04	2.07	95.00	0.50	0.28	-68.78
	1465.00	0.95	330.94	N/A	-0.80	-5.00	1464.95	-3290.05	0.99	94.00	0.49	0.46	-15.41
	1560.00	0.33	317.72	N/A	0.09	-5.57	1559.94	-3195.06	0.12	95.00	0.67	-0.65	-13.92
	1654.00	0.58	314.17	N/A	0.62	-6.09	1653.94	-3101.06	-0.39	94.00	0.27	0.27	-3.78
	1749.00	0.86	292.18	N/A	1.22	-7.10	1748.93	-3006.07	-0.96	95.00	0.41	0.29	-23.15
	1843.00	1.63	241.95	N/A	0.86	-8.93	1842.91	-2912.09	-0.53	94.00	1.35	0.82	-53.44
	1875.00	1.53	233.99	N/A	0.40	-9.68	1874.90	-2880.10	-0.03	32.00	0.75	-0.31	-24.87
	1916.00	1.63	237.16	N/A	-0.24	-10.61	1915.88	-2839.12	0.64	41.00	0.32	0.24	7.73
	1992.00	0.04	110.14	N/A	-0.84	-11.49	1991.87	-2763.13	1.27	76.00	2.18	-2.09	-167.13
	2087.00	0.07	174.42	N/A	-0.91	-11.46	2086.87	-2668.13	1.34	95.00	0.07	0.03	67.66
	2182.00	0.10	246.17	N/A	-1.00	-11.53	2181.87	-2573.13	1.43	95.00	0.11	0.03	75.53
	2277.00	0.04	32.54	N/A	-1.00	-11.59	2276.87	-2478.13	1.44	95.00	0.14	-0.06	154.07
	2371.00	0.14	30.50	N/A	-0.88	-11.51	2370.87	-2384.13	1.31	94.00	0.11	0.11	-2.17
	2466.00	0.15	52.14	N/A	-0.70	-11.35	2465.87	-2289.13	1.13	95.00	0.06	0.01	22.78
	2561.00	0.25	83.93	N/A	-0.60	-11.05	2560.87	-2194.13	1.02	95.00	0.15	0.11	33.46
	2656.00	0.03	191.50	N/A	-0.60	-10.85	2655.87	-2099.13	1.01	95.00	0.27	-0.23	113.23
	2750.00	0.03	157.11	N/A	-0.65	-10.84	2749.87	-2005.13	1.06	94.00	0.02	-0.00	-36.59
	2845.00	0.13	113.87	N/A	-0.72	-10.73	2844.87	-1910.13	1.12	95.00	0.12	0.11	-45.52
	2939.00	0.17	213.10	117.6	-0.88	-10.71	2938.87	-1816.13	1.28	94.00	0.24	0.04	105.56
	3034.00	0.18	287.48	120.3	-0.95	-10.93	3033.87	-1721.13	1.36	95.00	0.22	0.01	78.29
	3224.00	0.23	311.20	123.0	-0.61	-11.50	3223.87	-1531.13	1.04	190.00	0.05	0.03	12.48
	3318.00	0.10	213.09	123.0	-0.56	-11.69	3317.87	-1437.13	0.99	94.00	0.28	-0.14	-104.37
	3413.00	0.14	101.74	125.7	-0.65	-11.62	3412.87	-1342.13	1.08	95.00	0.21	0.04	-117.21
	3508.00	0.16	39.56	128.4	-0.57	-11.42	3507.87	-1247.13	1.00	95.00	0.16	0.02	-65.45
	3602.00	0.03	323.14	128.4	-0.45	-11.35	3601.87	-1153.13	0.87	94.00	0.17	-0.14	-81.30
	3697.00	0.04	215.64	131.1	-0.46	-11.39	3696.87	-1058.13	0.88	95.00	0.06	0.01	-113.16
	3791.00	1.82	257.67	133.8	-0.80	-12.87	3790.85	-964.15	1.28	94.00	1.90	1.89	44.71
	3886.00	3.85	257.81	133.8	-1.80	-17.46	3885.73	-869.27	2.45	95.00	2.14	2.14	0.15
	3980.00	5.23	252.34	136.5	-3.76	-24.63	3979.44	-775.56	4.68	94.00	1.54	1.47	-5.82
	4075.00	4.11	254.28	136.5	-6.00	-32.03	4074.12	-680.88	7.20	95.00	1.19	-1.18	2.04
	4170.00	4.10	251.60	139.2	-7.99	-38.53	4168.88	-586.12	9.43	95.00	0.20	-0.01	-2.82
	4264.00	7.22	255.54	141.9	-10.53	-47.44	4262.41	-492.59	12.30	94.00	3.34	3.32	4.19
	4359.00	7.29	255.40	144.6	-13.54	-59.05	4356.65	-398.35	15.75	95.00	0.08	0.07	-0.15
	4454.00	7.18	257.41	144.6	-16.35	-70.68	4450.89	-304.11	18.99	95.00	0.29	-0.12	2.12
	4549.00	7.00	258.97	147.3	-18.75	-82.16	4545.16	-209.84	21.82	95.00	0.28	-0.19	1.64
	4643.00	7.23	260.15	147.3	-20.86	-93.61	4638.44	-116.56	24.36	94.00	0.29	0.24	1.26
	4738.00	6.92	261.07	152.7	-22.77	-105.15	4732.72	-22.28	26.70	95.00	0.35	-0.33	0.97
	4832.00	6.58	261.84	152.7	-24.42	-116.07	4826.06	71.06	28.75	94.00	0.37	-0.36	0.82
	4927.00	7.34	262.00	155.4	-26.03	-127.47	4920.36	165.36	30.80	95.00	0.80	0.80	0.17
	5022.00	7.17	261.72	155.4	-27.73	-139.35	5014.60	259.60	32.94	95.00	0.18	-0.18	-0.29
	5116.00	6.82	261.68	158.1	-29.38	-150.68	5107.90	352.90	35.02	94.00	0.37	-0.37	-0.04
	5211.00	6.75	261.26	158.1	-31.05	-161.77	5202.24	447.24	37.10	95.00	0.09	-0.07	-0.44
	5305.00	6.80	261.48	160.8	-32.71	-172.74	5295.58	540.58	39.17	94.00	0.06	0.05	0.23
	5400.00	6.85	260.39	160.8	-34.49	-183.89	5389.91	634.91	41.37	95.00	0.15	0.05	-1.15
	5494.00	6.75	260.84	163.5	-36.31	-194.87	5483.25	728.25	43.59	94.00	0.12	-0.11	0.48
	5589.00	6.92	261.88	166.2	-38.00	-206.04	5577.57	822.57	45.71	95.00	0.22	0.18	1.09
	5684.00	6.80	261.13	166.2	-39.68	-217.27	5671.89	916.89	47.80	95.00	0.16	-0.13	-0.79
	5778.00	6.93	261.13	168.9	-41.41	-228.37	5765.22	1010.22	49.95	94.00	0.14	0.14	0.00
	5967.00	6.78	261.69	171.6	-44.78	-250.67	5952.87	1197.87	54.16	189.00	0.09	-0.08	0.30
	6062.00	6.79	261.37	171.6	-46.44	-261.78	6047.20	1292.20	56.22	95.00	0.04	0.01	-0.34
	6156.00	7.33	255.33	171.6	-48.79	-273.07	6140.49	1385.49	59.00	94.00	0.98	0.57	-6.43
	6251.00	13.41	236.89	174.3	-56.35	-288.18	6233.92	1478.92	67.12	95.00	7.21	6.40	-19.41
	6346.00	18.71	220.70	174.3	-73.94	-307.36	6325.22	1570.22	85.42	95.00	7.25	5.58	-17.04
	6440.00	25.45	204.63	179.7	-103.79	-325.65	6412.36	1657.36	115.94	94.00	9.57	7.17	-17.10
	6535.00	34.61	199.77	179.7	-147.84	-343.32	6494.53	1739.53	160.61	95.00	9.97	9.64	-5.12
	6629.00	44.77	194.67	179.7	-205.14	-360.79	6566.79	1811.79	218.54	94.00	11.34	10.81	-5.43
	6724.00	54.85	186.58	188.5	-276.48	-376.88	6637.88	1897.88	280.67	95.00	14.78	10.78	-0.43

	6724.00	54.95	186.32	182.3	-276.19	-375.06	6627.96	1872.96	290.07	95.00	11.79	10.72	-6.47
	6819.00	63.20	185.47	185.2	-357.00	-384.89	6676.77	1921.77	371.19	95.00	9.11	8.68	-3.21
	6914.00	71.84	184.47	185.2	-444.37	-392.46	6713.06	1958.06	458.78	95.00	9.15	9.09	-1.05
	7008.00	81.72	185.17	185.2	-535.44	-400.15	6734.53	1979.53	550.08	94.00	10.54	10.51	0.74
	7103.00	90.12	184.28	187.9	-629.80	-407.95	6741.29	1986.29	644.66	95.00	8.89	8.84	-0.94
	7198.00	90.06	184.24	196.0	-724.53	-415.00	6741.14	1986.14	739.59	95.00	0.08	-0.06	-0.04
	7292.00	89.85	184.45	198.7	-818.26	-422.12	6741.21	1986.21	833.52	94.00	0.32	-0.22	0.22
	7387.00	90.31	184.84	201.4	-912.95	-429.82	6741.08	1986.08	928.43	95.00	0.63	0.48	0.41
	7482.00	89.82	184.61	206.8	-1007.63	-437.64	6740.97	1985.97	1023.34	95.00	0.57	-0.52	-0.24
	7576.00	89.69	184.43	209.5	-1101.33	-445.05	6741.37	1986.37	1117.26	94.00	0.24	-0.14	-0.19
	7671.00	89.72	184.66	212.2	-1196.03	-452.58	6741.86	1986.86	1212.17	95.00	0.24	0.03	0.24
	7766.00	90.03	182.89	212.2	-1290.82	-458.83	6742.07	1987.07	1307.13	95.00	1.89	0.33	-1.86
	7860.00	89.66	180.65	214.9	-1384.77	-461.74	6742.32	1987.32	1401.12	94.00	2.42	-0.39	-2.38
	7955.00	89.85	180.27	214.9	-1479.77	-462.50	6742.73	1987.73	1496.08	95.00	0.45	0.20	-0.40
	8049.00	89.82	180.77	217.6	-1573.76	-463.35	6743.00	1988.00	1590.04	94.00	0.53	-0.03	0.53
	8144.00	90.03	180.84	220.3	-1668.75	-464.69	6743.12	1988.12	1685.01	95.00	0.23	0.22	0.07
	8238.00	89.91	180.92	220.3	-1762.74	-466.13	6743.17	1988.17	1778.99	94.00	0.15	-0.13	0.09
	8333.00	89.91	180.67	223.0	-1857.73	-467.45	6743.32	1988.32	1873.96	95.00	0.26	-0.00	-0.26
	8428.00	90.28	180.62	225.7	-1952.73	-468.52	6743.17	1988.17	1968.93	95.00	0.39	0.39	-0.05
	8522.00	89.91	180.87	225.7	-2046.72	-469.74	6743.01	1988.01	2062.90	94.00	0.48	-0.39	0.27
	8617.00	89.78	180.95	225.7	-2141.71	-471.25	6743.27	1988.27	2157.88	95.00	0.16	-0.14	0.08
	8712.00	89.75	178.52	225.7	-2236.70	-470.81	6743.66	1988.66	2252.79	95.00	2.56	-0.03	-2.56
	8806.00	89.88	178.41	228.4	-2330.66	-468.29	6743.96	1988.96	2346.59	94.00	0.18	0.14	-0.12
	8900.00	89.60	178.35	228.4	-2424.63	-465.63	6744.39	1989.39	2440.39	94.00	0.30	-0.30	-0.06
	8995.00	89.85	178.38	231.1	-2519.59	-462.92	6744.84	1989.84	2535.18	95.00	0.27	0.26	0.03
	9089.00	89.97	178.91	231.1	-2613.56	-460.70	6744.99	1989.99	2629.00	94.00	0.58	0.13	0.56
	9184.00	89.66	178.71	233.8	-2708.54	-458.73	6745.30	1990.30	2723.84	95.00	0.39	-0.33	-0.21
	9279.00	89.45	178.55	233.8	-2803.51	-456.46	6746.03	1991.03	2818.66	95.00	0.28	-0.22	-0.17
	9374.00	90.12	178.32	233.8	-2898.47	-453.86	6746.39	1991.39	2913.46	95.00	0.75	0.71	-0.24
	9468.00	90.37	178.76	236.5	-2992.44	-451.47	6745.99	1990.99	3007.27	94.00	0.54	0.27	0.47
	9563.00	89.94	178.25	236.5	-3087.41	-448.99	6745.73	1990.73	3102.08	95.00	0.70	-0.45	-0.54
	9657.00	90.00	178.57	239.2	-3181.37	-446.38	6745.78	1990.78	3195.88	94.00	0.35	0.06	0.34
	9752.00	90.12	178.84	239.2	-3276.35	-444.23	6745.68	1990.68	3290.70	95.00	0.31	0.13	0.28
	9846.00	89.75	178.48	241.9	-3370.32	-442.03	6745.79	1990.79	3384.53	94.00	0.55	-0.39	-0.38
	9941.00	89.88	178.96	241.9	-3465.29	-439.91	6746.10	1991.10	3479.36	95.00	0.52	0.14	0.51
	10036.00	89.78	178.64	244.6	-3560.27	-437.92	6746.38	1991.38	3574.20	95.00	0.35	-0.11	-0.34
	10130.00	89.85	178.85	244.6	-3654.25	-435.86	6746.68	1991.68	3668.03	94.00	0.24	0.07	0.22
	10320.00	89.85	181.63	244.6	-3844.23	-436.66	6747.18	1992.18	3857.90	190.00	1.46	-0.00	1.46
	10414.00	90.68	182.74	244.6	-3938.16	-440.24	6746.74	1991.74	3951.90	94.00	1.47	0.88	1.18
	10509.00	89.88	178.74	247.3	-4033.13	-441.47	6746.28	1991.28	4046.85	95.00	4.29	-0.84	-4.21
	10604.00	90.22	178.94	250.0	-4128.11	-439.55	6746.20	1991.20	4141.69	95.00	0.42	0.36	0.21
	10698.00	90.65	179.00	250.0	-4222.09	-437.86	6745.48	1990.48	4235.55	94.00	0.46	0.46	0.06
	10793.00	90.46	178.69	250.0	-4317.07	-435.94	6744.56	1989.56	4330.38	95.00	0.38	-0.20	-0.33
	10887.00	90.31	178.51	250.0	-4411.04	-433.65	6743.93	1988.93	4424.20	94.00	0.25	-0.16	-0.19
	10982.00	89.85	178.47	250.0	-4506.00	-431.14	6743.80	1988.80	4519.01	95.00	0.49	-0.48	-0.04
	11076.00	90.46	178.67	252.7	-4599.97	-428.80	6743.54	1988.54	4612.82	94.00	0.68	0.65	0.21
	11171.00	90.40	179.11	252.7	-4694.95	-426.96	6742.83	1987.83	4707.66	95.00	0.47	-0.06	0.46
	11266.00	90.37	177.92	250.0	-4789.92	-424.49	6742.19	1987.19	4802.47	95.00	1.25	-0.03	-1.25
	11360.00	90.31	179.75	252.7	-4883.89	-422.58	6741.63	1986.63	4896.31	94.00	1.95	-0.06	1.95
	11455.00	90.58	178.94	252.7	-4978.88	-421.50	6740.90	1985.90	4991.19	95.00	0.90	0.28	-0.85
	11549.00	90.03	179.52	255.4	-5072.87	-420.23	6740.40	1985.40	5085.07	94.00	0.85	-0.59	0.62
	11644.00	90.68	179.19	255.4	-5167.86	-419.17	6739.81	1984.81	5179.95	95.00	0.77	0.68	-0.35
	11738.00	90.22	179.66	255.4	-5261.85	-418.22	6739.07	1984.07	5273.84	94.00	0.70	-0.49	0.50
	11833.00	90.65	181.24	255.4	-5356.85	-418.97	6738.35	1983.35	5368.79	95.00	1.72	0.45	1.66
	11927.00	90.22	179.72	255.4	-5450.84	-419.76	6737.63	1982.63	5462.75	94.00	1.68	-0.46	-1.62
	12022.00	90.03	178.20	258.1	-5545.82	-418.03	6737.43	1982.43	5557.60	95.00	1.61	-0.20	-1.60
	12117.00	90.15	179.60	258.1	-5640.80	-416.21	6737.28	1982.28	5652.44	95.00	1.48	0.13	1.47
	12211.00	89.85	179.79	250.0	-5734.80	-415.71	6737.28	1982.28	5746.35	94.00	0.38	-0.32	0.20
	12306.00	90.00	178.81	255.4	-5829.79	-414.55	6737.40	1982.40	5841.24	95.00	1.04	0.16	-1.03
	12400.00	89.54	178.83	255.4	-5923.77	-412.61	6737.78	1982.78	5935.08	94.00	0.49	-0.49	0.02
	12495.00	89.91	178.88	258.1	-6018.75	-410.71	6738.24	1983.24	6029.92	95.00	0.39	0.39	0.05
	12589.00	89.69	178.40	258.1	-6112.72	-408.48	6738.56	1983.56	6123.74	94.00	0.56	-0.23	-0.53

	12684.00	89.00	179.65	258.1	-6207.70	-406.86	6738.82	1983.82	6218.60	95.00	1.36	0.33	1.32
	12779.00	89.63	179.08	258.1	-6302.70	-405.81	6739.13	1984.13	6313.48	95.00	0.72	-0.39	-0.60
	12874.00	89.45	179.24	258.1	-6397.68	-404.42	6739.89	1984.89	6408.35	95.00	0.25	-0.19	0.17
	12968.00	89.78	178.62	258.1	-6491.66	-402.66	6740.52	1985.52	6502.20	94.00	0.75	0.35	-0.66
	13063.00	90.03	180.43	260.8	-6586.66	-401.88	6740.68	1985.68	6597.10	95.00	1.92	0.26	1.91
	13158.00	90.03	180.40	260.8	-6681.65	-402.56	6740.63	1985.63	6692.05	95.00	0.03	-0.00	-0.03
	13253.00	89.38	181.61	260.8	-6776.64	-404.23	6741.12	1986.12	6787.03	95.00	1.45	-0.68	1.27
	13347.00	91.11	182.85	263.5	-6870.56	-407.89	6740.72	1985.72	6881.02	94.00	2.26	1.84	1.32
	13441.00	89.48	181.53	263.5	-6964.48	-411.48	6740.23	1985.23	6975.02	94.00	2.23	-1.73	-1.40
	13536.00	89.94	182.52	260.8	-7059.42	-414.84	6740.71	1985.71	7070.01	95.00	1.15	0.48	1.04
	13631.00	90.37	182.85	263.5	-7154.32	-419.29	6740.46	1985.46	7165.01	95.00	0.57	0.45	0.33
	13725.00	91.02	182.72	263.5	-7248.20	-423.85	6739.32	1984.32	7259.00	94.00	0.71	0.69	-0.14
	13820.00	90.52	181.86	263.5	-7343.11	-427.65	6738.04	1983.04	7353.99	95.00	1.05	-0.53	-0.91
	13915.00	90.46	180.37	263.5	-7438.09	-429.50	6737.23	1982.23	7448.96	95.00	1.57	-0.06	-1.57
	14009.00	90.34	180.34	263.5	-7532.08	-430.08	6736.57	1981.57	7542.92	94.00	0.13	-0.13	-0.03
	14104.00	89.85	179.48	266.2	-7627.08	-429.93	6736.41	1981.41	7637.84	95.00	1.04	-0.52	-0.91
	14199.00	90.25	179.92	266.2	-7722.08	-429.43	6736.33	1981.33	7732.76	95.00	0.63	0.42	0.46
	14293.00	90.25	179.85	269.0	-7816.08	-429.24	6735.92	1980.92	7826.68	94.00	0.07	0.00	-0.07
	14388.00	89.26	180.30	269.0	-7911.08	-429.37	6736.33	1981.33	7921.62	95.00	1.14	-1.04	0.47
	14482.00	89.11	179.48	269.0	-8005.07	-429.19	6737.66	1982.66	8015.53	94.00	0.89	-0.16	-0.87
	14577.00	89.17	179.65	266.2	-8100.05	-428.47	6739.09	1984.09	8110.43	95.00	0.19	0.06	0.18
	14671.00	88.61	179.38	269.0	-8194.03	-427.67	6740.91	1985.91	8204.31	94.00	0.66	-0.60	-0.29
	14766.00	89.88	178.18	269.0	-8289.00	-425.65	6742.16	1987.16	8299.13	95.00	1.84	1.34	-1.26
	14861.00	89.85	178.58	271.7	-8383.96	-422.96	6742.39	1987.39	8393.93	95.00	0.42	-0.03	0.42
	14955.00	90.03	178.82	271.7	-8477.94	-420.83	6742.48	1987.48	8487.76	94.00	0.32	0.19	0.26
	15050.00	89.48	178.57	274.4	-8572.91	-418.67	6742.89	1987.89	8582.58	95.00	0.64	-0.58	-0.26
	15144.00	89.78	178.30	274.4	-8666.87	-416.10	6743.50	1988.50	8676.38	94.00	0.43	0.32	-0.29
	15239.00	90.34	178.75	274.4	-8761.84	-413.66	6743.40	1988.40	8771.19	95.00	0.76	0.59	0.47
	15334.00	89.97	178.26	271.7	-8856.81	-411.18	6743.14	1988.14	8866.00	95.00	0.65	-0.39	-0.52
	15428.00	89.82	178.41	274.4	-8950.77	-408.45	6743.31	1988.31	8959.79	94.00	0.23	-0.16	0.16
	15523.00	89.72	177.99	274.4	-9045.72	-405.46	6743.69	1988.69	9054.56	95.00	0.45	-0.11	-0.44
	15617.00	90.00	178.72	274.4	-9139.68	-402.76	6743.92	1988.92	9148.36	94.00	0.83	0.30	0.78
	15712.00	89.75	177.66	277.1	-9234.63	-399.76	6744.13	1989.13	9243.13	95.00	1.15	-0.26	-1.12
	15807.00	89.91	177.61	277.1	-9329.55	-395.84	6744.41	1989.41	9337.83	95.00	0.18	0.17	-0.05
	15901.00	89.91	178.10	277.1	-9423.48	-392.32	6744.56	1989.56	9431.57	94.00	0.52	0.00	0.52
	15996.00	90.22	180.82	277.1	-9518.47	-391.43	6744.45	1989.45	9526.45	95.00	2.88	0.33	2.86
	16090.00	90.22	180.57	277.1	-9612.46	-392.57	6744.09	1989.09	9620.42	94.00	0.27	0.00	-0.27
	16185.00	90.09	180.74	279.8	-9707.46	-393.65	6743.84	1988.84	9715.39	95.00	0.23	-0.14	0.18
	16280.00	89.82	179.41	279.8	-9802.45	-393.78	6743.91	1988.91	9810.33	95.00	1.43	-0.28	-1.40
	16374.00	90.40	180.83	279.8	-9896.45	-393.98	6743.73	1988.73	9904.26	94.00	1.63	0.62	1.51
	16469.00	90.06	180.61	279.8	-9991.44	-395.17	6743.35	1988.35	9999.23	95.00	0.43	-0.36	-0.23
	16564.00	90.00	180.28	277.1	-10086.44	-395.91	6743.30	1988.30	10094.19	95.00	0.35	-0.06	-0.35
	16658.00	89.94	179.53	279.8	-10180.44	-395.75	6743.35	1988.35	10188.12	94.00	0.80	-0.06	-0.80
	16753.00	89.82	178.50	279.8	-10275.42	-394.12	6743.55	1988.55	10282.97	95.00	1.09	-0.13	-1.08
	16848.00	89.66	179.06	282.5	-10370.40	-392.10	6743.98	1988.98	10377.81	95.00	0.61	-0.17	0.59
	16943.00	90.34	179.84	282.5	-10465.39	-391.18	6743.98	1988.98	10472.70	95.00	1.09	0.72	0.82
	17037.00	90.12	179.12	282.5	-10559.39	-390.33	6743.60	1988.60	10566.60	94.00	0.80	-0.23	-0.77
	17132.00	89.29	177.74	285.2	-10654.35	-387.73	6744.09	1989.09	10661.39	95.00	1.70	-0.87	-1.45
	17227.00	89.97	178.13	285.2	-10749.28	-384.31	6744.70	1989.70	10756.13	95.00	0.83	0.72	0.41
	17309.00	89.94	178.20	285.2	-10831.24	-381.68	6744.77	1989.77	10837.94	82.00	0.09	-0.04	0.09
Projection	17334.00	89.94	178.20	N/A	-10856.23	-380.89	6744.79	1989.79	10862.88	25.00	0.00	0.01	-0.00