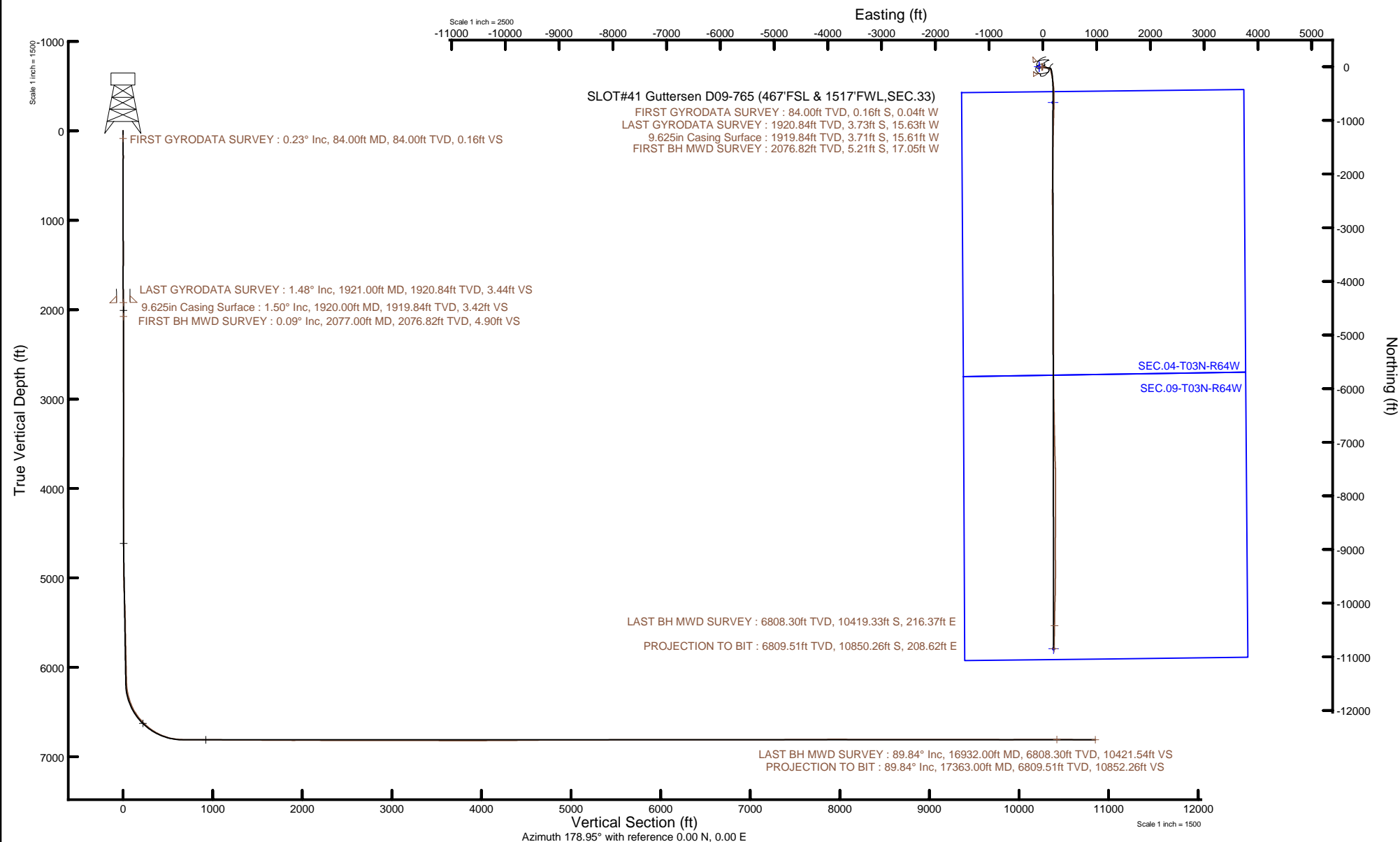


NOBLE ENERGY, INC

Location: COLORADO Slot: SLOT#41 Guttersen D09-765 (467'FSL & 1517'FWL,SEC.33)
Field: WELD COUNTY (NOBLE NAD 83 GRID) Well: Guttersen D09-765
Facility: SEC.33-T04N-R64W Wellbore: Guttersen D09-765 PWB



Plot reference wellpath is Guttersen D09-765 PWP Rev-B.0	Grid System: NAD83 / Lambert Colorado SP, Northern Zone (501), US feet
True vertical depths are referenced to H&P 517 (30) (RT)	North Reference: Grid north
Reference wellpath measured depths are referenced to H&P 517 (30) (RT)	Scale: True distance
H&P 517 (30) (RT) to Mean Sea Level: 4755 feet	Coordinates are in feet referenced to Slot
Mean Sea Level to Mud line (At Slot: SLOT#41 Guttersen D09-765 (467'FSL & 1517'FWL,SEC.33)): 0 feet	Depths are in feet
Offset wellpath MDs are referenced to each path's default MD datum	Created by: painsetr on 2020-12-09; Database: WellArchitectDB



REFERENCE WELLPATH IDENTIFICATION

Operator	NOBLE ENERGY, INC	Well	Guttersen D09-765
Field	WELD COUNTY (NOBLE NAD 83 GRID)	API	0512348948
Facility	SEC.33-T04N-R64W	Wellbore	Guttersen D09-765 AWP
Slot	SLOT#41 Guttersen D09-765 (467'FSL & 1517'FWL,SEC.33)		

REPORT SETUP INFORMATION

Projection System	NAD83 / Lambert Colorado SP, Northern Zone (501), US feet	Software System	WellArchitect® 6.0
North Reference	Grid	User	Painsetr
Scale	0.999957	Report Generated	12/9/2020 at 10:04:30 AM
Convergence at slot	0.61° East	Database	WellArchitectDB

WELLPATH LOCATION

	Local coordinates		Grid coordinates		Geographic coordinates	
	North[ft]	East[ft]	Easting[US ft]	Northing[US ft]	Latitude	Longitude
Slot Location	126.71	-2061.13	3262343.60	1340051.40	40.2630230°	-104.5599290°
Facility Reference Pt			3264404.63	1339924.70	40.2626150°	-104.5525490°
Field Reference Pt			3000000.00	4454105.15	48.7761986°	-105.5000000°

WELLPATH DATUM

Calculation method	Minimum curvature	H&P 517 (30') (RT) to Facility Vertical Datum	4755.00ft
Horizontal Reference Pt	Slot	H&P 517 (30') (RT) to Mean Sea Level	4755.00ft
Vertical Reference Pt	H&P 517 (30') (RT)	H&P 517 (30') (RT) to Mud Line at Slot (SLOT#41 Guttersen D09-765 (467'FSL & 1517'FWL,SEC.33))	4755.00ft
MD Reference Pt	H&P 517 (30') (RT)	Section Origin	N 0.00, E 0.00 ft
Field Vertical Reference	Mean Sea Level	Section Azimuth	178.95°

REFERENCE WELLPATH IDENTIFICATION			
Operator	NOBLE ENERGY, INC	Well	Guttersen D09-765
Field	WELD COUNTY (NOBLE NAD 83 GRID)	API	0512348948
Facility	SEC.33-T04N-R64W	Wellbore	Guttersen D09-765 AWB
Slot	SLOT#41 Guttersen D09-765 (467'FSL & 1517'FWL,SEC.33)		

WELLPATH DATA (180 stations)

MD [ft]	Inclination [°]	Azimuth [°]	TVD [ft]	Vert Sect [ft]	North [ft]	East [ft]	Grid East [US ft]	Grid North [US ft]	Latitude	Longitude	DLS [°/100ft]	Comments
0.00	0.000	194.470	0.00	0.00	0.00	0.00	3262343.60	1340051.40	40.2630230	-104.5599290	0.00	
84.00	0.230	194.470	84.00	0.16	-0.16	-0.04	3262343.55	1340051.24	40.2630226	-104.5599292	0.27	FIRST GYRODATA SURVEY
177.00	0.250	179.210	177.00	0.55	-0.55	-0.09	3262343.51	1340050.86	40.2630215	-104.5599293	0.07	
267.00	0.140	151.820	267.00	0.84	-0.84	-0.03	3262343.57	1340050.56	40.2630207	-104.5599291	0.16	
362.00	0.770	298.020	362.00	0.63	-0.64	-0.54	3262343.06	1340050.76	40.2630213	-104.5599310	0.94	
457.00	0.540	285.190	456.99	0.20	-0.23	-1.54	3262342.06	1340051.18	40.2630224	-104.5599345	0.29	
551.00	0.020	266.240	550.99	0.07	-0.11	-1.98	3262341.62	1340051.29	40.2630228	-104.5599361	0.55	
646.00	0.210	91.190	645.99	0.08	-0.12	-1.82	3262341.77	1340051.29	40.2630227	-104.5599355	0.24	
741.00	0.380	41.650	740.99	-0.14	0.12	-1.44	3262342.16	1340051.52	40.2630234	-104.5599341	0.31	
835.00	0.150	222.620	834.99	-0.28	0.26	-1.31	3262342.28	1340051.66	40.2630237	-104.5599337	0.56	
930.00	0.540	262.230	929.98	-0.14	0.11	-1.84	3262341.75	1340051.51	40.2630233	-104.5599356	0.46	
1024.00	0.670	261.410	1023.98	-0.02	-0.03	-2.82	3262340.77	1340051.37	40.2630230	-104.5599391	0.14	
1119.00	0.490	246.870	1118.97	0.21	-0.28	-3.75	3262339.85	1340051.13	40.2630223	-104.5599424	0.24	
1213.00	0.840	237.680	1212.97	0.72	-0.80	-4.70	3262338.90	1340050.60	40.2630209	-104.5599459	0.39	
1308.00	0.620	250.510	1307.96	1.24	-1.35	-5.77	3262337.82	1340050.06	40.2630195	-104.5599497	0.29	
1402.00	0.950	272.410	1401.95	1.35	-1.48	-7.03	3262336.57	1340049.92	40.2630191	-104.5599542	0.47	
1497.00	0.830	297.550	1496.94	0.98	-1.13	-8.43	3262335.17	1340050.27	40.2630201	-104.5599592	0.43	
1591.00	0.620	283.850	1590.93	0.52	-0.70	-9.52	3262334.07	1340050.71	40.2630214	-104.5599632	0.29	
1686.00	0.640	258.480	1685.93	0.49	-0.68	-10.54	3262333.05	1340050.72	40.2630214	-104.5599668	0.29	
1780.00	1.270	253.270	1779.91	0.86	-1.08	-12.06	3262331.54	1340050.32	40.2630204	-104.5599722	0.68	
1875.00	2.340	227.790	1874.87	2.42	-2.69	-14.50	3262329.10	1340048.71	40.2630160	-104.5599811	1.38	
1921.00	1.480	226.940	1920.84	3.44	-3.73	-15.63	3262327.97	1340047.68	40.2630132	-104.5599851	1.87	LAST GYRODATA SURVEY
2077.00	0.090	156.520	2076.82	4.90	-5.21	-17.05	3262326.54	1340046.19	40.2630092	-104.5599903	0.93	FIRST BH MWD SURVEY
2171.00	0.040	147.040	2170.82	5.00	-5.31	-17.01	3262326.59	1340046.09	40.2630089	-104.5599901	0.05	
2266.00	0.070	189.380	2265.82	5.08	-5.39	-17.00	3262326.60	1340046.01	40.2630087	-104.5599901	0.05	
2361.00	0.140	50.110	2360.82	5.07	-5.38	-16.92	3262326.68	1340046.03	40.2630087	-104.5599898	0.21	
2456.00	0.280	78.190	2455.82	4.95	-5.26	-16.60	3262327.00	1340046.15	40.2630091	-104.5599887	0.18	
2551.00	0.250	74.480	2550.82	4.85	-5.15	-16.17	3262327.42	1340046.25	40.2630093	-104.5599871	0.04	
2645.00	0.150	62.070	2644.82	4.75	-5.04	-15.87	3262327.73	1340046.36	40.2630096	-104.5599860	0.12	
2740.00	0.250	265.350	2739.82	4.70	-5.00	-15.97	3262327.63	1340046.41	40.2630097	-104.5599864	0.41	

REFERENCE WELLPATH IDENTIFICATION			
Operator	NOBLE ENERGY, INC	Well	Guttersen D09-765
Field	WELD COUNTY (NOBLE NAD 83 GRID)	API	0512348948
Facility	SEC.33-T04N-R64W	Wellbore	Guttersen D09-765 AWB
Slot	SLOT#41 Guttersen D09-765 (467'FSL & 1517'FWL,SEC.33)		

WELLPATH DATA (180 stations)												
MD [ft]	Inclination [°]	Azimuth [°]	TVD [ft]	Vert Sect [ft]	North [ft]	East [ft]	Grid East [US ft]	Grid North [US ft]	Latitude	Longitude	DLS [°/100ft]	Comments
2834.00	0.410	235.040	2833.82	4.91	-5.21	-16.45	3262327.15	1340046.20	40.2630092	-104.5599881	0.25	
2929.00	0.970	186.470	2928.81	5.89	-6.20	-16.81	3262326.78	1340045.20	40.2630065	-104.5599895	0.80	
3024.00	0.310	141.960	3023.81	6.89	-7.20	-16.75	3262326.85	1340044.20	40.2630037	-104.5599893	0.82	
3119.00	0.130	293.120	3118.81	7.06	-7.36	-16.69	3262326.91	1340044.04	40.2630033	-104.5599891	0.45	
3213.00	0.400	55.400	3212.81	6.83	-7.14	-16.52	3262327.08	1340044.27	40.2630039	-104.5599884	0.51	
3308.00	0.370	37.180	3307.80	6.41	-6.70	-16.06	3262327.54	1340044.70	40.2630051	-104.5599868	0.13	
3402.00	0.740	175.580	3401.80	6.77	-7.07	-15.83	3262327.77	1340044.34	40.2630041	-104.5599860	1.11	
3497.00	1.470	91.600	3496.79	7.44	-7.71	-14.56	3262329.04	1340043.69	40.2630023	-104.5599815	1.66	
3592.00	1.270	24.380	3591.77	6.55	-6.79	-12.91	3262330.69	1340044.62	40.2630047	-104.5599755	1.61	
3687.00	0.150	249.390	3686.76	5.64	-5.87	-12.59	3262331.01	1340045.53	40.2630072	-104.5599743	1.45	
3781.00	0.060	229.530	3780.76	5.71	-5.95	-12.74	3262330.85	1340045.46	40.2630070	-104.5599749	0.10	
3875.00	0.060	270.960	3874.76	5.74	-5.98	-12.83	3262330.77	1340045.43	40.2630070	-104.5599752	0.05	
3970.00	0.060	266.360	3969.76	5.74	-5.98	-12.93	3262330.67	1340045.42	40.2630070	-104.5599756	0.01	
4065.00	0.100	287.300	4064.76	5.72	-5.96	-13.06	3262330.54	1340045.45	40.2630070	-104.5599760	0.05	
4159.00	0.090	225.740	4158.76	5.74	-5.99	-13.19	3262330.41	1340045.42	40.2630070	-104.5599765	0.10	
4254.00	0.130	231.290	4253.76	5.86	-6.11	-13.33	3262330.27	1340045.30	40.2630066	-104.5599770	0.04	
4349.00	0.100	253.830	4348.76	5.95	-6.20	-13.49	3262330.11	1340045.21	40.2630064	-104.5599776	0.06	
4443.00	0.030	235.380	4442.76	5.98	-6.23	-13.59	3262330.01	1340045.17	40.2630063	-104.5599779	0.08	
4538.00	0.070	298.720	4537.76	5.97	-6.22	-13.66	3262329.94	1340045.19	40.2630063	-104.5599782	0.07	
4633.00	0.110	282.810	4632.76	5.92	-6.17	-13.80	3262329.80	1340045.23	40.2630065	-104.5599787	0.05	
4728.00	0.350	246.220	4727.76	6.01	-6.27	-14.16	3262329.44	1340045.14	40.2630062	-104.5599800	0.28	
4822.00	0.560	93.170	4821.76	6.15	-6.41	-13.96	3262329.64	1340045.00	40.2630058	-104.5599793	0.94	
4917.00	2.660	100.510	4916.71	6.63	-6.84	-11.33	3262332.27	1340044.57	40.2630046	-104.5599698	2.22	
5011.00	4.300	102.750	5010.54	7.91	-8.01	-5.75	3262337.85	1340043.39	40.2630012	-104.5599499	1.75	
5106.00	7.300	106.520	5105.04	10.58	-10.52	3.52	3262347.11	1340040.89	40.2629940	-104.5599168	3.18	
5200.00	8.820	103.690	5198.11	14.22	-13.92	16.24	3262359.84	1340037.49	40.2629843	-104.5598713	1.67	
5295.00	8.880	103.960	5291.98	17.97	-17.41	30.44	3262374.03	1340033.99	40.2629743	-104.5598206	0.08	
5389.00	8.810	98.740	5384.86	21.07	-20.26	44.59	3262388.19	1340031.15	40.2629661	-104.5597700	0.86	
5484.00	9.210	97.340	5478.69	23.42	-22.33	59.32	3262402.92	1340029.07	40.2629600	-104.5597173	0.48	
5579.00	5.060	96.580	5572.93	25.09	-23.78	71.03	3262414.62	1340027.62	40.2629556	-104.5596754	4.37	

REFERENCE WELLPATH IDENTIFICATION			
Operator	NOBLE ENERGY, INC	Well	Guttersen D09-765
Field	WELD COUNTY (NOBLE NAD 83 GRID)	API	0512348948
Facility	SEC.33-T04N-R64W	Wellbore	Guttersen D09-765 AWB
Slot	SLOT#41 Guttersen D09-765 (467'FSL & 1517'FWL,SEC.33)		

WELLPATH DATA (180 stations)

MD [ft]	Inclination [°]	Azimuth [°]	TVD [ft]	Vert Sect [ft]	North [ft]	East [ft]	Grid East [US ft]	Grid North [US ft]	Latitude	Longitude	DLS [°/100ft]	Comments
5673.00	4.820	101.750	5666.58	26.51	-25.06	79.02	3262422.61	1340026.34	40.2629519	-104.5596468	0.54	
5768.00	6.180	100.580	5761.14	28.43	-26.82	87.95	3262431.54	1340024.59	40.2629468	-104.5596149	1.44	
5862.00	6.270	100.610	5854.59	30.49	-28.69	97.97	3262441.56	1340022.72	40.2629414	-104.5595791	0.10	
5957.00	6.250	100.490	5949.02	32.57	-30.59	108.15	3262451.74	1340020.82	40.2629359	-104.5595427	0.03	
6051.00	6.200	101.190	6042.47	34.67	-32.50	118.16	3262461.75	1340018.90	40.2629303	-104.5595069	0.10	
6146.00	6.210	100.450	6136.91	36.78	-34.43	128.25	3262471.84	1340016.98	40.2629248	-104.5594708	0.08	
6241.00	7.970	136.600	6231.23	42.68	-40.15	137.83	3262481.42	1340011.26	40.2629088	-104.5594367	4.94	
6335.00	14.860	165.640	6323.38	59.26	-56.59	145.31	3262488.90	1339994.81	40.2628634	-104.5594105	9.33	
6430.00	21.890	168.180	6413.48	88.55	-85.77	151.97	3262495.56	1339965.64	40.2627832	-104.5593878	7.45	
6524.00	31.300	168.710	6497.44	129.88	-126.96	160.36	3262503.95	1339924.45	40.2626699	-104.5593593	10.01	
6619.00	40.320	168.150	6574.40	184.47	-181.35	171.53	3262515.11	1339870.06	40.2625202	-104.5593213	9.50	
6714.00	47.990	171.300	6642.52	249.75	-246.42	183.19	3262526.78	1339804.99	40.2623413	-104.5592820	8.40	
6809.00	54.950	173.790	6701.67	323.55	-320.06	192.75	3262536.34	1339731.35	40.2621389	-104.5592506	7.61	
6903.00	64.380	174.970	6749.09	404.34	-400.72	200.65	3262544.24	1339650.71	40.2619173	-104.5592253	10.09	
6998.00	73.390	177.520	6783.28	492.76	-489.05	206.39	3262549.97	1339562.38	40.2616746	-104.5592081	9.81	
7092.00	82.530	180.250	6802.87	584.59	-580.86	208.13	3262551.72	1339470.57	40.2614226	-104.5592053	10.13	
7187.00	89.750	181.210	6809.27	679.26	-675.57	206.92	3262550.51	1339375.86	40.2611627	-104.5592133	7.67	
7282.00	89.690	181.230	6809.73	774.19	-770.55	204.90	3262548.49	1339280.89	40.2609020	-104.5592241	0.07	
7377.00	89.720	181.230	6810.22	869.11	-865.53	202.86	3262546.45	1339185.92	40.2606414	-104.5592351	0.03	
7471.00	89.660	181.950	6810.73	963.01	-959.49	200.25	3262543.84	1339091.96	40.2603836	-104.5592480	0.77	
7566.00	89.880	181.630	6811.11	1057.89	-1054.44	197.29	3262540.87	1338997.01	40.2601230	-104.5592622	0.41	
7661.00	89.510	181.190	6811.61	1152.80	-1149.41	194.95	3262538.54	1338902.05	40.2598624	-104.5592742	0.61	
7755.00	89.570	181.350	6812.37	1246.72	-1243.38	192.87	3262536.45	1338808.08	40.2596045	-104.5592852	0.18	
7850.00	89.820	181.010	6812.87	1341.65	-1338.36	190.91	3262534.50	1338713.10	40.2593439	-104.5592959	0.44	
7944.00	89.630	181.380	6813.33	1435.57	-1432.34	188.95	3262532.54	1338619.13	40.2590860	-104.5593065	0.44	
8039.00	89.820	180.170	6813.78	1530.52	-1527.33	187.66	3262531.25	1338524.14	40.2588253	-104.5593147	1.29	
8133.00	89.660	180.530	6814.21	1624.49	-1621.33	187.09	3262530.68	1338430.15	40.2585673	-104.5593203	0.42	
8228.00	89.410	180.780	6814.98	1719.45	-1716.32	186.00	3262529.59	1338335.17	40.2583066	-104.5593278	0.37	
8323.00	89.450	180.730	6815.92	1814.39	-1811.30	184.75	3262528.34	1338240.18	40.2580459	-104.5593359	0.07	
8417.00	90.060	180.610	6816.33	1908.35	-1905.30	183.65	3262527.24	1338146.19	40.2577880	-104.5593434	0.66	

REFERENCE WELLPATH IDENTIFICATION			
Operator	NOBLE ENERGY, INC	Well	Guttersen D09-765
Field	WELD COUNTY (NOBLE NAD 83 GRID)	API	0512348948
Facility	SEC.33-T04N-R64W	Wellbore	Guttersen D09-765 AWB
Slot	SLOT#41 Guttersen D09-765 (467'FSL & 1517'FWL,SEC.33)		

WELLPATH DATA (180 stations)												
MD [ft]	Inclination [°]	Azimuth [°]	TVD [ft]	Vert Sect [ft]	North [ft]	East [ft]	Grid East [US ft]	Grid North [US ft]	Latitude	Longitude	DLS [°/100ft]	Comments
8512.00	90.280	180.240	6816.04	2003.32	-2000.29	182.95	3262526.54	1338051.20	40.2575272	-104.5593495	0.45	
8607.00	89.850	180.690	6815.94	2098.28	-2095.29	182.18	3262525.77	1337956.21	40.2572665	-104.5593559	0.66	
8701.00	89.750	180.890	6816.26	2192.23	-2189.28	180.88	3262524.47	1337862.22	40.2570086	-104.5593641	0.24	
8795.00	89.880	180.780	6816.57	2286.18	-2283.27	179.51	3262523.10	1337768.24	40.2567506	-104.5593726	0.18	
8890.00	90.180	180.470	6816.52	2381.14	-2378.26	178.48	3262522.06	1337673.25	40.2564899	-104.5593799	0.45	
8985.00	89.910	179.670	6816.44	2476.12	-2473.26	178.36	3262521.95	1337578.25	40.2562292	-104.5593840	0.89	
9079.00	90.000	179.160	6816.52	2570.12	-2567.26	179.32	3262522.91	1337484.26	40.2559711	-104.5593841	0.55	
9174.00	89.780	180.250	6816.70	2665.11	-2662.25	179.81	3262523.40	1337389.27	40.2557104	-104.5593859	1.17	
9269.00	89.690	179.430	6817.14	2760.10	-2757.25	180.07	3262523.66	1337294.28	40.2554496	-104.5593886	0.87	
9363.00	90.120	179.380	6817.30	2854.09	-2851.25	181.05	3262524.64	1337200.29	40.2551916	-104.5593887	0.46	
9458.00	90.090	179.120	6817.12	2949.09	-2946.24	182.29	3262525.88	1337105.30	40.2549308	-104.5593878	0.28	
9552.00	90.490	179.840	6816.65	3043.08	-3040.23	183.15	3262526.73	1337011.31	40.2546728	-104.5593883	0.88	
9647.00	89.820	179.660	6816.39	3138.07	-3135.23	183.56	3262527.15	1336916.32	40.2544120	-104.5593905	0.73	
9741.00	89.570	179.350	6816.89	3232.07	-3229.22	184.37	3262527.96	1336822.33	40.2541540	-104.5593911	0.42	
9836.00	90.000	179.550	6817.25	3327.06	-3324.22	185.29	3262528.87	1336727.33	40.2538932	-104.5593915	0.50	
9931.00	89.660	179.620	6817.53	3422.06	-3419.22	185.97	3262529.56	1336632.34	40.2536325	-104.5593926	0.37	
10025.00	88.950	178.780	6818.67	3516.05	-3513.20	187.29	3262530.87	1336538.36	40.2533745	-104.5593915	1.17	
10120.00	90.340	179.390	6819.26	3611.04	-3608.18	188.80	3262532.39	1336443.38	40.2531137	-104.5593897	1.60	
10215.00	89.780	179.370	6819.16	3706.04	-3703.18	189.83	3262533.42	1336348.40	40.2528529	-104.5593896	0.59	
10309.00	89.600	179.280	6819.67	3800.04	-3797.17	190.94	3262534.53	1336254.41	40.2525949	-104.5593892	0.21	
10404.00	90.180	179.550	6819.85	3895.03	-3892.16	191.91	3262535.50	1336159.42	40.2523342	-104.5593893	0.67	
10498.00	90.310	178.800	6819.45	3989.03	-3986.15	193.26	3262536.85	1336065.43	40.2520761	-104.5593881	0.81	
10593.00	90.620	179.440	6818.67	4084.03	-4081.14	194.72	3262538.31	1335970.45	40.2518154	-104.5593864	0.75	
10782.00	90.310	179.510	6817.14	4273.01	-4270.12	196.45	3262540.04	1335781.47	40.2512966	-104.5593874	0.17	
10877.00	90.430	179.480	6816.53	4368.01	-4365.12	197.29	3262540.88	1335686.48	40.2510358	-104.5593880	0.13	
10972.00	90.430	180.870	6815.81	4462.98	-4460.11	197.00	3262540.59	1335591.49	40.2507751	-104.5593927	1.46	
11066.00	90.620	179.360	6814.95	4556.95	-4554.10	196.81	3262540.40	1335497.51	40.2505171	-104.5593969	1.62	
11161.00	90.890	180.230	6813.70	4651.93	-4649.09	197.15	3262540.74	1335402.52	40.2502564	-104.5593993	0.96	
11255.00	89.940	179.240	6813.02	4745.92	-4743.09	197.58	3262541.17	1335308.53	40.2499984	-104.5594013	1.46	
11350.00	89.720	180.000	6813.30	4840.91	-4838.09	198.22	3262541.80	1335213.54	40.2497376	-104.5594027	0.83	

REFERENCE WELLPATH IDENTIFICATION			
Operator	NOBLE ENERGY, INC	Well	Guttersen D09-765
Field	WELD COUNTY (NOBLE NAD 83 GRID)	API	0512348948
Facility	SEC.33-T04N-R64W	Wellbore	Guttersen D09-765 AWB
Slot	SLOT#41 Guttersen D09-765 (467'FSL & 1517'FWL,SEC.33)		

WELLPATH DATA (180 stations)												
MD [ft]	Inclination [°]	Azimuth [°]	TVD [ft]	Vert Sect [ft]	North [ft]	East [ft]	Grid East [US ft]	Grid North [US ft]	Latitude	Longitude	DLS [°/100ft]	Comments
11444.00	89.820	179.910	6813.68	4934.90	-4932.08	198.29	3262541.88	1335119.54	40.2494796	-104.5594060	0.14	
11539.00	90.090	179.880	6813.75	5029.88	-5027.08	198.46	3262542.05	1335024.55	40.2492188	-104.5594090	0.29	
11634.00	90.580	179.870	6813.20	5124.87	-5122.08	198.67	3262542.26	1334929.55	40.2489581	-104.5594118	0.52	
11728.00	90.150	179.360	6812.60	5218.86	-5216.08	199.30	3262542.89	1334835.56	40.2487000	-104.5594132	0.71	
11823.00	90.340	180.440	6812.19	5313.84	-5311.07	199.47	3262543.06	1334740.57	40.2484393	-104.5594162	1.15	
11917.00	90.490	180.510	6811.51	5407.81	-5405.07	198.69	3262542.28	1334646.58	40.2481813	-104.5594225	0.18	
12012.00	90.460	180.150	6810.73	5502.78	-5500.06	198.14	3262541.73	1334551.59	40.2479206	-104.5594281	0.38	
12106.00	90.430	179.850	6810.00	5596.76	-5594.06	198.14	3262541.73	1334457.60	40.2476626	-104.5594317	0.32	
12201.00	89.690	179.830	6809.90	5691.75	-5689.06	198.41	3262541.99	1334362.60	40.2474018	-104.5594343	0.78	
12295.00	90.030	178.990	6810.13	5785.74	-5783.05	199.37	3262542.96	1334268.61	40.2471438	-104.5594344	0.96	
12390.00	89.630	178.780	6810.41	5880.74	-5878.04	201.22	3262544.81	1334173.63	40.2468830	-104.5594314	0.48	
12484.00	91.140	179.930	6809.78	5974.73	-5972.02	202.28	3262545.87	1334079.65	40.2466250	-104.5594312	2.02	
12579.00	89.630	179.330	6809.14	6069.72	-6067.02	202.89	3262546.48	1333984.66	40.2463643	-104.5594326	1.71	
12695.00	89.780	179.300	6809.73	6185.72	-6183.01	204.28	3262547.87	1333868.68	40.2460459	-104.5594321	0.13	
12768.00	90.000	179.040	6809.87	6258.72	-6256.00	205.34	3262548.93	1333795.69	40.2458455	-104.5594310	0.47	
12863.00	89.970	178.670	6809.90	6353.71	-6350.98	207.24	3262550.82	1333700.71	40.2455847	-104.5594279	0.39	
12958.00	90.180	179.590	6809.78	6448.71	-6445.97	208.68	3262552.27	1333605.73	40.2453239	-104.5594263	0.99	
13053.00	89.910	179.360	6809.70	6543.71	-6540.96	209.55	3262553.14	1333510.74	40.2450632	-104.5594268	0.37	
13148.00	90.180	178.290	6809.63	6638.71	-6635.94	211.50	3262555.09	1333415.76	40.2448024	-104.5594234	1.16	
13242.00	89.850	178.890	6809.60	6732.70	-6729.91	213.81	3262557.40	1333321.80	40.2445444	-104.5594187	0.73	
13337.00	90.060	178.710	6809.68	6827.70	-6824.89	215.80	3262559.39	1333226.82	40.2442837	-104.5594152	0.29	
13431.00	90.150	178.990	6809.50	6921.70	-6918.87	217.69	3262561.27	1333132.84	40.2440256	-104.5594120	0.31	
13526.00	89.690	178.320	6809.64	7016.70	-7013.84	219.92	3262563.50	1333037.88	40.2437649	-104.5594076	0.86	
13620.00	90.430	180.050	6809.54	7110.70	-7107.83	221.25	3262564.84	1332943.89	40.2435069	-104.5594064	2.00	
13715.00	89.820	177.530	6809.33	7205.69	-7202.80	223.26	3262566.85	1332848.93	40.2432461	-104.5594028	2.73	
13810.00	90.220	177.950	6809.30	7300.67	-7297.73	227.01	3262570.59	1332754.01	40.2429855	-104.5593930	0.61	
13904.00	90.400	177.960	6808.79	7394.65	-7391.67	230.36	3262573.95	1332660.07	40.2427275	-104.5593846	0.19	
13999.00	90.120	178.200	6808.36	7489.64	-7486.61	233.54	3262577.13	1332565.13	40.2424668	-104.5593768	0.39	
14094.00	90.280	179.930	6808.03	7584.63	-7581.59	235.09	3262578.68	1332470.15	40.2422061	-104.5593748	1.83	
14188.00	90.120	179.930	6807.70	7678.62	-7675.59	235.21	3262578.79	1332376.16	40.2419481	-104.5593780	0.17	

REFERENCE WELLPATH IDENTIFICATION					
Operator	NOBLE ENERGY, INC			Well	Guttersen D09-765
Field	WELD COUNTY (NOBLE NAD 83 GRID)			API	0512348948
Facility	SEC.33-T04N-R64W			Wellbore	Guttersen D09-765 AWB
Slot	SLOT#41 Guttersen D09-765 (467'FSL & 1517'FWL,SEC.33)				

WELLPATH DATA (180 stations) † = interpolated, ‡ = extrapolated station

MD [ft]	Inclination [°]	Azimuth [°]	TVD [ft]	Vert Sect [ft]	North [ft]	East [ft]	Grid East [US ft]	Grid North [US ft]	Latitude	Longitude	DLS [°/100ft]	Comments
14283.00	90.400	179.770	6807.27	7773.61	-7770.59	235.46	3262579.04	1332281.16	40.2416873	-104.5593807	0.34	
14377.00	90.950	180.160	6806.16	7867.59	-7864.59	235.51	3262579.10	1332187.17	40.2414293	-104.5593841	0.72	
14472.00	90.000	180.480	6805.37	7962.55	-7959.59	234.98	3262578.57	1332092.18	40.2411686	-104.5593896	1.06	
14566.00	89.200	179.830	6806.03	8056.53	-8053.58	234.73	3262578.32	1331998.19	40.2409106	-104.5593941	1.10	
14661.00	89.940	179.600	6806.74	8151.52	-8148.57	235.20	3262578.79	1331903.20	40.2406498	-104.5593960	0.82	
14755.00	89.970	179.780	6806.81	8245.51	-8242.57	235.71	3262579.30	1331809.21	40.2403918	-104.5593977	0.19	
14850.00	90.090	179.740	6806.77	8340.50	-8337.57	236.11	3262579.69	1331714.21	40.2401310	-104.5593999	0.13	
14945.00	89.570	180.260	6807.05	8435.48	-8432.57	236.11	3262579.69	1331619.22	40.2398703	-104.5594035	0.77	
15039.00	89.910	180.930	6807.47	8529.44	-8526.56	235.13	3262578.72	1331525.23	40.2396123	-104.5594106	0.80	
15134.00	90.090	180.340	6807.47	8624.40	-8621.55	234.08	3262577.67	1331430.24	40.2393516	-104.5594180	0.65	
15228.00	90.460	180.130	6807.02	8718.38	-8715.55	233.69	3262577.28	1331336.25	40.2390936	-104.5594229	0.45	
15323.00	90.030	180.170	6806.62	8813.35	-8810.55	233.45	3262577.03	1331241.25	40.2388329	-104.5594274	0.45	
15418.00	89.900	180.270	6806.67	8908.33	-8905.55	233.08	3262576.67	1331146.26	40.2385721	-104.5594323	0.17	
15512.00	89.960	179.810	6806.79	9002.31	-8999.55	233.02	3262576.60	1331052.26	40.2383141	-104.5594362	0.49	
15607.00	89.900	179.900	6806.91	9097.30	-9094.55	233.26	3262576.84	1330957.27	40.2380533	-104.5594389	0.11	
15702.00	89.660	179.800	6807.27	9192.29	-9189.55	233.50	3262577.09	1330862.27	40.2377926	-104.5594416	0.27	
15796.00	89.810	179.670	6807.70	9286.28	-9283.55	233.94	3262577.53	1330768.28	40.2375346	-104.5594436	0.21	
15891.00	89.930	179.460	6807.92	9381.27	-9378.54	234.66	3262578.25	1330673.28	40.2372738	-104.5594447	0.25	
15986.00	89.960	180.850	6808.01	9476.25	-9473.54	234.40	3262577.99	1330578.29	40.2370130	-104.5594492	1.46	
16080.00	89.940	180.410	6808.09	9570.21	-9567.53	233.37	3262576.96	1330484.30	40.2367551	-104.5594565	0.47	
16175.00	89.930	180.580	6808.20	9665.17	-9662.53	232.55	3262576.14	1330389.31	40.2364944	-104.5594630	0.18	
16269.00	89.470	180.530	6808.69	9759.13	-9756.52	231.64	3262575.22	1330295.32	40.2362364	-104.5594698	0.49	
16364.00	90.060	182.160	6809.08	9854.05	-9851.49	229.41	3262573.00	1330200.35	40.2359758	-104.5594814	1.82	
16459.00	90.390	181.650	6808.71	9948.92	-9946.44	226.25	3262569.84	1330105.41	40.2357153	-104.5594964	0.64	
16553.00	90.090	181.730	6808.32	10042.81	-10040.40	223.48	3262567.07	1330011.46	40.2354574	-104.5595098	0.33	
16648.00	90.390	181.070	6807.92	10137.72	-10135.37	221.16	3262564.74	1329916.49	40.2351968	-104.5595218	0.76	
16743.00	89.840	180.970	6807.73	10232.66	-10230.35	219.47	3262563.05	1329821.51	40.2349362	-104.5595314	0.59	
16837.00	89.810	180.880	6808.01	10326.60	-10324.34	217.95	3262561.54	1329727.53	40.2346782	-104.5595404	0.10	
16932.00	89.840	181.030	6808.30	10421.54	-10419.33	216.37	3262559.95	1329632.55	40.2344176	-104.5595497	0.16	LAST BH MWD SURVEY
17363.00†	89.840	181.030	6809.51	10852.26	-10850.26	208.62	3262552.21	1329201.64	40.2332350	-104.5595938	0.00	PROJECTION TO BIT

HOLE & CASING SECTIONS - Ref Wellbore: Guttersen D09-765 AWB Ref Wellpath: Guttersen D09-765 AWP

String/Diameter	Start MD [ft]	End MD [ft]	Interval [ft]	Start TVD [ft]	End TVD [ft]	Start N/S [ft]	Start E/W [ft]	End N/S [ft]	End E/W [ft]
9.625in Casing Surface	30.00	1920.00	1890.00	30.00	1919.84	-0.02	-0.01	-3.71	-15.61

TARGETS

Name	TVD [ft]	North [ft]	East [ft]	Grid East [US ft]	Grid North [US ft]	Latitude	Longitude	Shape
SEC.04-T03N-R64W	0.00	0.01	-67.54	3262276.06	1340051.42	40.2630250	-104.5601710	polygon
2D Polygon: dimensions not calculated								
SEC.09-T03N-R64W	0.00	0.01	-67.54	3262276.06	1340051.42	40.2630250	-104.5601710	polygon
2D Polygon: dimensions not calculated								
Guttersen D09-765 BHL REV-1 (200'FSL & 1654'FWL,SEC.09)	6811.00	-10850.80	199.49	3262543.08	1329201.09	40.2332337	-104.5596266	point
Guttersen D09-765 TPZ REV-1 (200'FNL & 1700'FWL,SEC.04)	6811.00	-665.04	190.25	3262533.84	1339386.39	40.2611920	-104.5592726	point

WELLPATH COMPOSITION - Ref Wellbore: Guttersen D09-765 AWB Ref Wellpath: Guttersen D09-765 AWP

Start MD [ft]	End MD [ft]	Positional Uncertainty Model	Log Name/Comment	Wellbore	Survey Date
0.00	1921.00	Gyrodata 2015 - GC+DROP+COND	Gyrodata 2015 - GC+DROP+COND 13-1/2" <84 - 1921>	Guttersen D09-765 AWB	11/30/2020

WELLPATH COMPOSITION - Ref Wellbore: Guttersen D09-765 AWB Ref Wellpath: Guttersen D09-765 AWP					
Start MD [ft]	End MD [ft]	Positional Uncertainty Model	Log Name/Comment	Wellbore	Survey Date
1921.00	17363.00	OWSG MWD rev2 (MS+IFR1) NOBLE	OWSG MWD rev2 (MS+IFR1) NOBLE 8-1/2" <2077 - 16932>	Guttersen D09-765 AWB	12/7/2020



Actual Wellpath Report

Guttersen D09-765 AWP

Page 8 of 8



REFERENCE WELLPATH IDENTIFICATION			
Operator	NOBLE ENERGY, INC	Well	Guttersen D09-765
Field	WELD COUNTY (NOBLE NAD 83 GRID)	API	0512348948
Facility	SEC.33-T04N-R64W	Wellbore	Guttersen D09-765 AWB
Slot	SLOT#41 Guttersen D09-765 (467'FSL & 1517'FWL,SEC.33)		

WELLPATH COMMENTS				
MD [ft]	Inclination [°]	Azimuth [°]	TVD [ft]	Comment
84.00	0.230	194.470	84.00	FIRST GYRODATA SURVEY
1921.00	1.480	226.940	1920.84	LAST GYRODATA SURVEY
2077.00	0.090	156.520	2076.82	FIRST BH MWD SURVEY
16932.00	89.840	181.030	6808.30	LAST BH MWD SURVEY
17363.00	89.840	181.030	6809.51	PROJECTION TO BIT