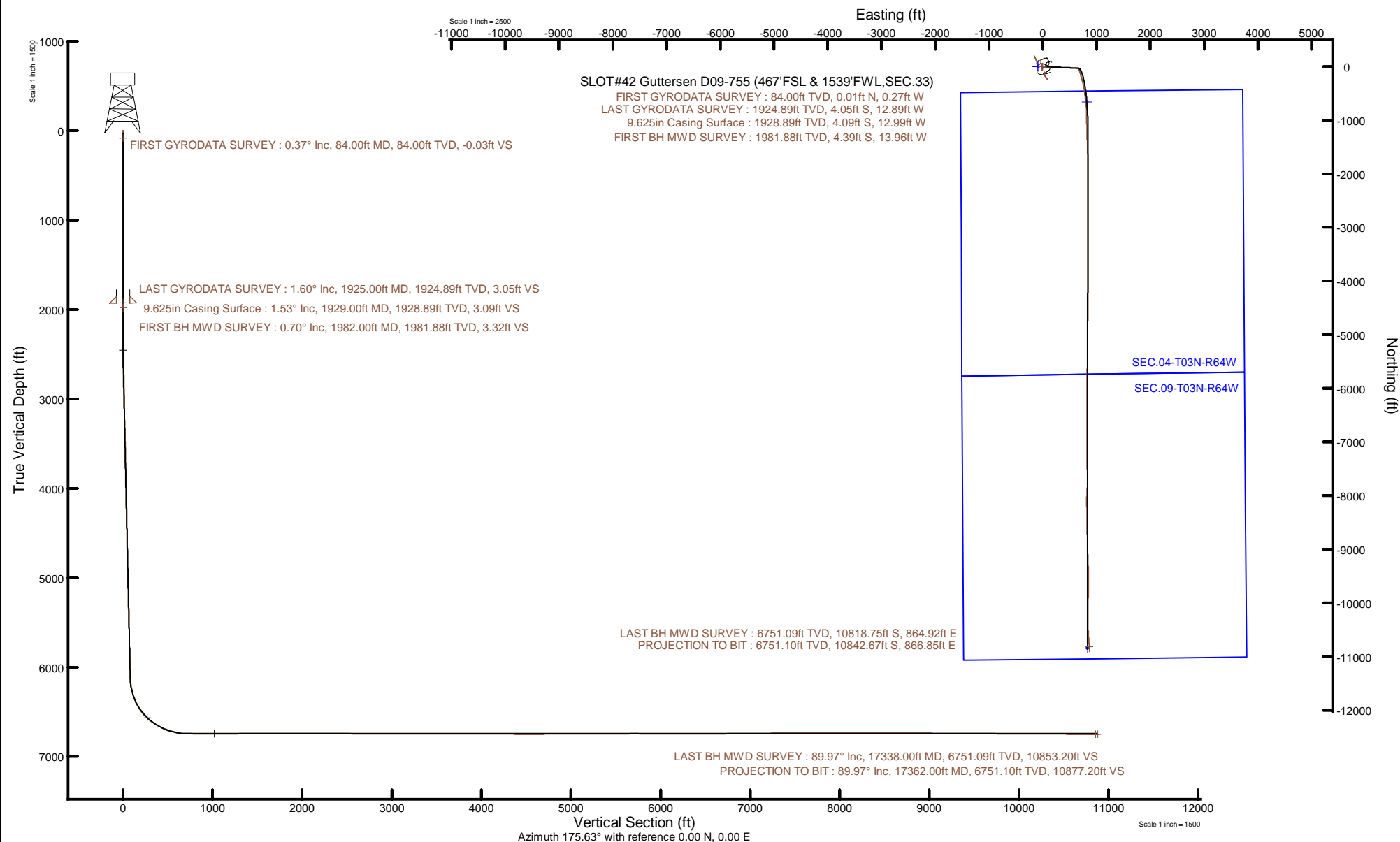


# NOBLE ENERGY, INC

Location: COLORADO Slot: SLOT#42 Guttersten D09-755 (467'FSL & 1539'FWL,SEC.33)  
Field: WELD COUNTY (NOBLE NAD 83 GRID) Well: Guttersten D09-755  
Facility: SEC.33-T04N-R64W Wellbore: Guttersten D09-755 PWB



Plot reference wellpath is Guttersten D09-755 PWP Rev-A.0	Grid System: NAD83 / Lambert Colorado SP, Northern Zone (501), US feet
True vertical depths are referenced to H&P 517 (30) (RT)	North Reference: Grid north
Reference wellpath measured depths are referenced to H&P 517 (30) (RT)	Scale: True distance
H&P 517 (30) (RT) to Mean Sea Level: 4754 feet	Coordinates are in feet referenced to Slot
Mean Sea Level to Mud line (At Slot: SLOT#42 Guttersten D09-755 (467'FSL & 1539'FWL,SEC.33)): 0 feet	Depths are in feet
Offset wellpath MDs are referenced to each path's default MD datum	Created by: painsr on 2020-12-18; Database: WellArchitectDB



## REFERENCE WELLPATH IDENTIFICATION

Operator	NOBLE ENERGY, INC	Well	Guttersen D09-755
Field	WELD COUNTY (NOBLE NAD 83 GRID)	API	0512348951
Facility	SEC.33-T04N-R64W	Wellbore	Guttersen D09-755 AWP
Slot	SLOT#42 Guttersen D09-755 (467'FSL & 1539'FWL,SEC.33)		

## REPORT SETUP INFORMATION

Projection System	NAD83 / Lambert Colorado SP, Northern Zone (501), US feet	Software System	WellArchitect® 6.0
North Reference	Grid	User	Painsetr
Scale	0.999957	Report Generated	12/18/2020 at 2:46:20 PM
Convergence at slot	0.61° East	Database	WellArchitectDB

## WELLPATH LOCATION

	Local coordinates		Grid coordinates		Geographic coordinates	
	North[ft]	East[ft]	Easting[US ft]	Northing[US ft]	Latitude	Longitude
Slot Location	126.95	-2038.80	3262365.92	1340051.64	40.2630230°	-104.5598490°
Facility Reference Pt			3264404.63	1339924.70	40.2626150°	-104.5525490°
Field Reference Pt			3000000.00	4454105.15	48.7761986°	-105.5000000°

## WELLPATH DATUM

Calculation method	Minimum curvature	H&P 517 (30') (RT) to Facility Vertical Datum	4754.00ft
Horizontal Reference Pt	Slot	H&P 517 (30') (RT) to Mean Sea Level	4754.00ft
Vertical Reference Pt	H&P 517 (30') (RT)	H&P 517 (30') (RT) to Mud Line at Slot (SLOT#42 Guttersen D09-755 (467'FSL & 1539'FWL,SEC.33))	4754.00ft
MD Reference Pt	H&P 517 (30') (RT)	Section Origin	N 0.00, E 0.00 ft
Field Vertical Reference	Mean Sea Level	Section Azimuth	175.63°

REFERENCE WELLPATH IDENTIFICATION			
Operator	NOBLE ENERGY, INC	Well	Guttersen D09-755
Field	WELD COUNTY (NOBLE NAD 83 GRID)	API	0512348951
Facility	SEC.33-T04N-R64W	Wellbore	Guttersen D09-755 AWB
Slot	SLOT#42 Guttersen D09-755 (467'FSL & 1539'FWL,SEC.33)		

## WELLPATH DATA (186 stations)

MD [ft]	Inclination [°]	Azimuth [°]	TVD [ft]	Vert Sect [ft]	North [ft]	East [ft]	Grid East [US ft]	Grid North [US ft]	Latitude	Longitude	DLS [°/100ft]	Comments
0.00	0.000	271.680	0.00	0.00	0.00	0.00	3262365.92	1340051.64	40.2630230	-104.5598490	0.00	
84.00	0.370	271.680	84.00	-0.03	0.01	-0.27	3262365.65	1340051.65	40.2630230	-104.5598500	0.44	FIRST GYRODATA SURVEY
177.00	0.130	253.090	177.00	-0.04	-0.01	-0.67	3262365.25	1340051.63	40.2630230	-104.5598514	0.27	
267.00	0.300	232.390	267.00	0.11	-0.19	-0.96	3262364.96	1340051.45	40.2630225	-104.5598524	0.20	
362.00	0.430	297.870	362.00	0.06	-0.17	-1.47	3262364.45	1340051.47	40.2630226	-104.5598543	0.43	
457.00	0.060	43.820	457.00	-0.16	0.03	-1.75	3262364.17	1340051.67	40.2630231	-104.5598553	0.47	
551.00	0.630	16.720	550.99	-0.68	0.56	-1.57	3262364.35	1340052.20	40.2630246	-104.5598546	0.61	
646.00	0.280	351.250	645.99	-1.40	1.29	-1.45	3262364.47	1340052.93	40.2630266	-104.5598542	0.42	
741.00	0.280	223.270	740.99	-1.47	1.35	-1.65	3262364.28	1340052.99	40.2630268	-104.5598548	0.53	
835.00	0.630	209.580	834.99	-0.89	0.73	-2.06	3262363.86	1340052.37	40.2630251	-104.5598563	0.39	
930.00	0.600	239.720	929.98	-0.24	0.03	-2.75	3262363.18	1340051.67	40.2630232	-104.5598588	0.34	
1024.00	0.570	203.150	1023.98	0.39	-0.65	-3.35	3262362.57	1340050.99	40.2630213	-104.5598610	0.39	
1119.00	0.770	233.090	1118.97	1.15	-1.47	-4.05	3262361.87	1340050.17	40.2630191	-104.5598636	0.42	
1213.00	0.720	242.530	1212.96	1.73	-2.12	-5.08	3262360.84	1340049.52	40.2630173	-104.5598673	0.14	
1308.00	0.800	249.770	1307.95	2.14	-2.62	-6.23	3262359.69	1340049.02	40.2630160	-104.5598714	0.13	
1402.00	0.570	264.700	1401.95	2.33	-2.89	-7.31	3262358.61	1340048.75	40.2630153	-104.5598753	0.31	
1497.00	0.350	224.840	1496.94	2.52	-3.14	-7.99	3262357.93	1340048.50	40.2630146	-104.5598777	0.40	
1591.00	0.560	312.730	1590.94	2.38	-3.03	-8.53	3262357.39	1340048.61	40.2630149	-104.5598797	0.69	
1686.00	0.320	340.830	1685.94	1.78	-2.47	-8.96	3262356.97	1340049.17	40.2630165	-104.5598812	0.33	
1780.00	0.840	263.090	1779.94	1.56	-2.30	-9.73	3262356.19	1340049.34	40.2630170	-104.5598839	0.89	
1875.00	1.810	233.020	1874.91	2.40	-3.29	-11.62	3262354.31	1340048.35	40.2630143	-104.5598907	1.22	
1925.00	1.600	246.140	1924.89	3.05	-4.05	-12.89	3262353.04	1340047.59	40.2630123	-104.5598953	0.88	LAST GYRODATA SURVEY
1982.00	0.700	265.880	1981.88	3.32	-4.39	-13.96	3262351.96	1340047.25	40.2630113	-104.5598992	1.70	FIRST BH MWD SURVEY
2077.00	0.140	39.300	2076.87	3.23	-4.35	-14.47	3262351.46	1340047.29	40.2630115	-104.5599010	0.84	
2171.00	0.070	100.180	2170.87	3.16	-4.27	-14.34	3262351.59	1340047.37	40.2630117	-104.5599005	0.13	
2268.00	2.150	95.390	2267.85	3.49	-4.45	-12.47	3262353.45	1340047.19	40.2630111	-104.5598938	2.14	
2361.00	4.130	89.020	2360.71	3.98	-4.56	-7.38	3262358.54	1340047.09	40.2630107	-104.5598756	2.16	
2456.00	5.730	91.900	2455.35	4.70	-4.65	0.78	3262366.70	1340046.99	40.2630102	-104.5598464	1.70	
2551.00	7.120	91.910	2549.75	5.86	-5.01	11.40	3262377.32	1340046.63	40.2630089	-104.5598083	1.46	
2645.00	10.770	92.100	2642.59	7.49	-5.52	26.01	3262391.93	1340046.12	40.2630071	-104.5597560	3.88	

REFERENCE WELLPATH IDENTIFICATION			
Operator	NOBLE ENERGY, INC	Well	Guttersen D09-755
Field	WELD COUNTY (NOBLE NAD 83 GRID)	API	0512348951
Facility	SEC.33-T04N-R64W	Wellbore	Guttersen D09-755 AWB
Slot	SLOT#42 Guttersen D09-755 (467'FSL & 1539'FWL,SEC.33)		

## WELLPATH DATA (186 stations)

MD [ft]	Inclination [°]	Azimuth [°]	TVD [ft]	Vert Sect [ft]	North [ft]	East [ft]	Grid East [US ft]	Grid North [US ft]	Latitude	Longitude	DLS [°/100ft]	Comments
2740.00	10.620	91.700	2735.94	9.42	-6.11	43.63	3262409.55	1340045.53	40.2630050	-104.5596929	0.18	
2834.00	10.410	93.120	2828.37	11.44	-6.83	60.77	3262426.69	1340044.81	40.2630025	-104.5596315	0.35	
2929.00	10.370	91.520	2921.81	13.44	-7.52	77.88	3262443.80	1340044.12	40.2630001	-104.5595702	0.31	
3024.00	9.810	91.320	3015.34	15.12	-7.94	94.52	3262460.44	1340043.71	40.2629985	-104.5595106	0.59	
3118.00	10.120	91.870	3107.92	16.81	-8.39	110.78	3262476.70	1340043.25	40.2629967	-104.5594524	0.34	
3213.00	10.190	92.740	3201.43	18.76	-9.06	127.52	3262493.43	1340042.58	40.2629944	-104.5593925	0.18	
3308.00	10.360	91.970	3294.91	20.75	-9.76	144.45	3262510.36	1340041.88	40.2629920	-104.5593318	0.23	
3402.00	10.360	92.260	3387.38	22.66	-10.38	161.34	3262527.26	1340041.26	40.2629898	-104.5592713	0.06	
3497.00	10.260	91.920	3480.84	24.57	-11.00	178.33	3262544.25	1340040.64	40.2629876	-104.5592105	0.12	
3592.00	10.460	92.490	3574.29	26.53	-11.66	195.40	3262561.32	1340039.98	40.2629853	-104.5591493	0.24	
3687.00	10.460	91.240	3667.71	28.40	-12.22	212.64	3262578.55	1340039.42	40.2629833	-104.5590876	0.24	
3781.00	10.430	92.240	3760.16	30.22	-12.74	229.67	3262595.58	1340038.90	40.2629813	-104.5590266	0.20	
3875.00	10.460	92.370	3852.60	32.20	-13.43	246.70	3262612.61	1340038.22	40.2629790	-104.5589656	0.04	
3970.00	10.340	91.590	3946.04	34.10	-14.02	263.84	3262629.75	1340037.62	40.2629768	-104.5589042	0.19	
4064.00	10.310	92.760	4038.52	36.02	-14.66	280.67	3262646.58	1340036.98	40.2629746	-104.5588439	0.23	
4159.00	10.500	91.240	4131.95	37.92	-15.25	297.82	3262663.73	1340036.39	40.2629725	-104.5587825	0.35	
4254.00	10.180	91.980	4225.41	39.70	-15.73	314.86	3262680.77	1340035.91	40.2629707	-104.5587215	0.36	
4348.00	10.290	92.200	4317.92	41.58	-16.34	331.56	3262697.46	1340035.30	40.2629685	-104.5586617	0.12	
4443.00	10.470	91.900	4411.36	43.49	-16.95	348.66	3262714.57	1340034.69	40.2629663	-104.5586004	0.20	
4538.00	10.290	91.520	4504.81	45.31	-17.46	365.77	3262731.68	1340034.18	40.2629644	-104.5585391	0.20	
4633.00	10.320	92.210	4598.27	47.15	-18.02	382.76	3262748.66	1340033.62	40.2629624	-104.5584783	0.13	
4727.00	10.110	93.710	4690.78	49.28	-18.88	399.40	3262765.31	1340032.77	40.2629596	-104.5584187	0.36	
4822.00	10.070	93.240	4784.31	51.55	-19.88	416.01	3262781.92	1340031.76	40.2629563	-104.5583592	0.10	
4917.00	10.320	93.960	4877.82	53.88	-20.94	432.80	3262798.70	1340030.70	40.2629529	-104.5582991	0.30	
5011.00	10.090	91.700	4970.33	55.98	-21.77	449.43	3262815.33	1340029.87	40.2629502	-104.5582396	0.49	
5106.00	9.820	92.870	5063.90	57.88	-22.42	465.84	3262831.74	1340029.22	40.2629479	-104.5581808	0.36	
5200.00	10.020	92.470	5156.49	59.86	-23.17	482.01	3262847.91	1340028.47	40.2629454	-104.5581229	0.23	
5295.00	10.080	92.540	5250.03	61.85	-23.90	498.57	3262864.47	1340027.74	40.2629429	-104.5580636	0.06	
5389.00	9.860	93.490	5342.62	63.94	-24.75	514.83	3262880.72	1340026.89	40.2629401	-104.5580054	0.29	
5484.00	10.010	94.690	5436.19	66.35	-25.92	531.17	3262897.07	1340025.72	40.2629364	-104.5579468	0.27	

REFERENCE WELLPATH IDENTIFICATION			
Operator	NOBLE ENERGY, INC	Well	Guttersen D09-755
Field	WELD COUNTY (NOBLE NAD 83 GRID)	API	0512348951
Facility	SEC.33-T04N-R64W	Wellbore	Guttersen D09-755 AWB
Slot	SLOT#42 Guttersen D09-755 (467'FSL & 1539'FWL,SEC.33)		

## WELLPATH DATA (186 stations)

MD [ft]	Inclination [°]	Azimuth [°]	TVD [ft]	Vert Sect [ft]	North [ft]	East [ft]	Grid East [US ft]	Grid North [US ft]	Latitude	Longitude	DLS [°/100ft]	Comments
5578.00	10.040	92.190	5528.76	68.58	-26.90	547.50	3262913.40	1340024.74	40.2629332	-104.5578884	0.46	
5673.00	10.120	92.470	5622.29	70.52	-27.58	564.12	3262930.01	1340024.06	40.2629309	-104.5578289	0.10	
5768.00	10.080	92.090	5715.82	72.45	-28.24	580.76	3262946.66	1340023.40	40.2629286	-104.5577692	0.08	
5862.00	9.650	101.860	5808.43	75.58	-30.16	596.70	3262962.59	1340021.48	40.2629228	-104.5577122	1.84	
5957.00	9.820	92.690	5902.07	78.80	-32.18	612.58	3262978.47	1340019.46	40.2629168	-104.5576554	1.64	
6051.00	9.870	92.470	5994.69	80.75	-32.90	628.64	3262994.53	1340018.74	40.2629144	-104.5575979	0.07	
6146.00	9.970	92.320	6088.27	82.67	-33.59	644.99	3263010.88	1340018.06	40.2629120	-104.5575393	0.11	
6241.00	10.950	117.570	6181.74	88.41	-38.10	661.21	3263027.10	1340013.54	40.2628992	-104.5574814	4.89	
6335.00	13.740	155.050	6273.70	103.61	-52.38	673.86	3263039.75	1339999.27	40.2628596	-104.5574366	8.84	
6430.00	21.410	162.970	6364.21	131.14	-79.23	683.71	3263049.60	1339972.42	40.2627856	-104.5574023	8.44	
6524.00	31.420	164.800	6448.29	172.05	-119.38	695.19	3263061.08	1339932.27	40.2626751	-104.5573627	10.68	
6619.00	41.390	163.610	6524.65	227.23	-173.54	710.58	3263076.47	1339878.11	40.2625259	-104.5573096	10.52	
6714.00	51.060	163.590	6590.30	294.24	-239.27	729.93	3263095.82	1339812.38	40.2623450	-104.5572428	10.18	
6809.00	58.960	167.960	6644.75	370.85	-314.66	748.89	3263114.78	1339737.00	40.2621375	-104.5571778	9.13	
6903.00	68.870	170.790	6686.04	454.67	-397.54	764.35	3263130.24	1339654.12	40.2619096	-104.5571255	10.88	
6998.00	74.000	171.240	6716.27	544.40	-486.46	778.40	3263144.29	1339565.20	40.2616651	-104.5570786	5.42	
7092.00	80.880	171.340	6736.70	635.83	-577.10	792.29	3263158.17	1339474.57	40.2614159	-104.5570323	7.32	
7187.00	89.410	174.230	6744.74	730.28	-670.91	804.15	3263170.04	1339380.76	40.2611580	-104.5569934	9.48	
7282.00	89.780	176.460	6745.41	825.27	-765.59	811.86	3263177.74	1339286.09	40.2608979	-104.5569693	2.38	
7377.00	90.000	178.660	6745.59	920.21	-860.50	815.90	3263181.79	1339191.18	40.2606373	-104.5569585	2.33	
7471.00	90.180	179.380	6745.44	1014.05	-954.48	817.51	3263183.40	1339097.20	40.2603793	-104.5569563	0.79	
7566.00	90.150	179.110	6745.17	1108.86	-1049.47	818.76	3263184.65	1339002.21	40.2601185	-104.5569554	0.29	
7660.00	89.880	179.000	6745.14	1202.69	-1143.46	820.31	3263186.20	1338908.23	40.2598605	-104.5569534	0.31	
7755.00	90.280	178.060	6745.01	1297.56	-1238.43	822.75	3263188.63	1338813.27	40.2595998	-104.5569483	1.08	
7850.00	90.030	177.970	6744.75	1392.48	-1333.37	826.04	3263191.92	1338718.33	40.2593391	-104.5569402	0.28	
7944.00	90.060	177.880	6744.68	1486.41	-1427.31	829.44	3263195.33	1338624.40	40.2590811	-104.5569316	0.10	
8039.00	90.030	178.280	6744.61	1581.32	-1522.26	832.63	3263198.51	1338529.45	40.2588204	-104.5569238	0.42	
8133.00	90.680	178.540	6744.02	1675.20	-1616.22	835.24	3263201.12	1338435.50	40.2585624	-104.5569180	0.74	
8228.00	90.180	178.220	6743.31	1770.09	-1711.18	837.92	3263203.80	1338340.54	40.2583017	-104.5569120	0.62	
8323.00	90.490	178.250	6742.76	1864.99	-1806.13	840.85	3263206.73	1338245.59	40.2580410	-104.5569051	0.33	

REFERENCE WELLPATH IDENTIFICATION			
Operator	NOBLE ENERGY, INC	Well	Guttersen D09-755
Field	WELD COUNTY (NOBLE NAD 83 GRID)	API	0512348951
Facility	SEC.33-T04N-R64W	Wellbore	Guttersen D09-755 AWB
Slot	SLOT#42 Guttersen D09-755 (467'FSL & 1539'FWL,SEC.33)		

## WELLPATH DATA (186 stations)

MD [ft]	Inclination [°]	Azimuth [°]	TVD [ft]	Vert Sect [ft]	North [ft]	East [ft]	Grid East [US ft]	Grid North [US ft]	Latitude	Longitude	DLS [°/100ft]	Comments
8417.00	89.780	180.140	6742.53	1958.80	-1900.12	842.17	3263208.05	1338151.61	40.2577830	-104.5569040	2.15	
8512.00	89.690	179.710	6742.97	2053.54	-1995.11	842.29	3263208.18	1338056.62	40.2575222	-104.5569072	0.46	
8607.00	89.780	180.250	6743.41	2148.26	-2090.11	842.33	3263208.21	1337961.62	40.2572615	-104.5569107	0.58	
8701.00	90.180	180.470	6743.45	2241.94	-2184.11	841.73	3263207.62	1337867.63	40.2570035	-104.5569164	0.49	
8795.00	90.000	180.320	6743.30	2335.61	-2278.11	841.09	3263206.97	1337773.64	40.2567455	-104.5569223	0.25	
8890.00	89.350	179.200	6743.84	2430.36	-2373.10	841.48	3263207.37	1337678.64	40.2564847	-104.5569245	1.36	
8984.00	89.480	179.970	6744.80	2524.13	-2467.10	842.17	3263208.05	1337584.66	40.2562267	-104.5569256	0.83	
9079.00	89.690	180.210	6745.48	2618.84	-2562.09	842.02	3263207.90	1337489.66	40.2559660	-104.5569298	0.34	
9174.00	89.940	180.360	6745.79	2713.53	-2657.09	841.54	3263207.43	1337394.67	40.2557053	-104.5569351	0.31	
9269.00	90.060	180.210	6745.79	2808.21	-2752.09	841.07	3263206.95	1337299.67	40.2554445	-104.5569404	0.20	
9363.00	89.540	179.880	6746.12	2901.93	-2846.09	841.00	3263206.88	1337205.68	40.2551865	-104.5569442	0.66	
9458.00	90.150	179.960	6746.38	2996.67	-2941.09	841.13	3263207.01	1337110.69	40.2549257	-104.5569474	0.65	
9552.00	90.220	180.430	6746.07	3090.37	-3035.09	840.81	3263206.69	1337016.69	40.2546678	-104.5569521	0.51	
9647.00	89.720	180.230	6746.12	3185.05	-3130.09	840.26	3263206.15	1336921.70	40.2544070	-104.5569577	0.57	
9741.00	90.120	179.790	6746.25	3278.77	-3224.08	840.25	3263206.13	1336827.70	40.2541490	-104.5569613	0.63	
9836.00	90.580	180.140	6745.67	3373.50	-3319.08	840.30	3263206.19	1336732.71	40.2538883	-104.5569647	0.61	
9931.00	89.880	180.310	6745.29	3468.19	-3414.08	839.93	3263205.81	1336637.71	40.2536275	-104.5569697	0.76	
10025.00	90.120	180.480	6745.29	3561.86	-3508.08	839.28	3263205.17	1336543.72	40.2533695	-104.5569756	0.31	
10120.00	89.940	180.680	6745.24	3656.51	-3603.07	838.32	3263204.20	1336448.73	40.2531088	-104.5569826	0.28	
10214.00	89.780	179.970	6745.47	3750.19	-3697.07	837.79	3263203.67	1336354.74	40.2528508	-104.5569881	0.77	
10309.00	89.510	179.910	6746.06	3844.92	-3792.07	837.89	3263203.77	1336259.74	40.2525901	-104.5569914	0.29	
10404.00	89.630	180.200	6746.77	3939.64	-3887.07	837.80	3263203.68	1336164.75	40.2523293	-104.5569953	0.33	
10498.00	89.600	179.020	6747.41	4033.40	-3981.06	838.44	3263204.32	1336070.76	40.2520713	-104.5569966	1.26	
10593.00	90.120	180.660	6747.64	4128.14	-4076.06	838.70	3263204.59	1335975.77	40.2518105	-104.5569993	1.81	
10688.00	90.150	180.040	6747.41	4222.82	-4171.05	838.12	3263204.00	1335880.78	40.2515498	-104.5570050	0.65	
10782.00	88.060	180.750	6748.88	4316.48	-4265.03	837.47	3263203.36	1335786.80	40.2512919	-104.5570109	2.35	
10877.00	90.030	179.730	6750.46	4411.15	-4360.01	837.08	3263202.96	1335691.82	40.2510312	-104.5570159	2.34	
10971.00	89.200	179.530	6751.10	4504.92	-4454.01	837.68	3263203.57	1335597.83	40.2507732	-104.5570174	0.91	
11066.00	90.550	179.800	6751.30	4599.68	-4549.00	838.24	3263204.12	1335502.84	40.2505124	-104.5570190	1.45	
11160.00	90.950	181.430	6750.07	4693.31	-4642.99	837.23	3263203.11	1335408.86	40.2502545	-104.5570262	1.79	

REFERENCE WELLPATH IDENTIFICATION			
Operator	NOBLE ENERGY, INC	Well	Guttersen D09-755
Field	WELD COUNTY (NOBLE NAD 83 GRID)	API	0512348951
Facility	SEC.33-T04N-R64W	Wellbore	Guttersen D09-755 AWB
Slot	SLOT#42 Guttersen D09-755 (467'FSL & 1539'FWL,SEC.33)		

## WELLPATH DATA (186 stations)

MD [ft]	Inclination [°]	Azimuth [°]	TVD [ft]	Vert Sect [ft]	North [ft]	East [ft]	Grid East [US ft]	Grid North [US ft]	Latitude	Longitude	DLS [°/100ft]	Comments
11255.00	89.850	180.360	6749.41	4787.91	-4737.97	835.75	3263201.63	1335313.88	40.2499938	-104.5570351	1.62	
11350.00	90.120	180.380	6749.43	4882.58	-4832.97	835.13	3263201.02	1335218.89	40.2497331	-104.5570409	0.28	
11444.00	90.680	180.080	6748.78	4976.27	-4926.97	834.76	3263200.64	1335124.90	40.2494751	-104.5570459	0.68	
11539.00	90.590	180.450	6747.73	5070.96	-5021.96	834.32	3263200.20	1335029.91	40.2492143	-104.5570511	0.40	
11634.00	90.220	180.340	6747.05	5165.63	-5116.95	833.66	3263199.54	1334934.92	40.2489536	-104.5570570	0.41	
11728.00	90.150	180.720	6746.75	5259.28	-5210.95	832.79	3263198.68	1334840.93	40.2486956	-104.5570637	0.41	
11822.00	90.280	180.720	6746.40	5352.91	-5304.94	831.61	3263197.49	1334746.94	40.2484377	-104.5570715	0.14	
11917.00	90.000	180.180	6746.17	5447.57	-5399.94	830.86	3263196.75	1334651.95	40.2481770	-104.5570778	0.64	
12012.00	89.690	180.300	6746.42	5542.26	-5494.94	830.47	3263196.35	1334556.95	40.2479162	-104.5570829	0.35	
12106.00	91.390	181.700	6745.54	5635.84	-5588.91	828.83	3263194.71	1334462.98	40.2476583	-104.5570923	2.34	
12201.00	89.510	181.430	6744.79	5730.32	-5683.87	826.23	3263192.12	1334368.03	40.2473978	-104.5571052	2.00	
12295.00	89.600	181.280	6745.52	5823.85	-5777.84	824.01	3263189.89	1334274.06	40.2471399	-104.5571168	0.19	
12390.00	89.720	180.010	6746.08	5918.48	-5872.83	822.94	3263188.82	1334179.08	40.2468792	-104.5571242	1.34	
12484.00	89.940	179.630	6746.36	6012.23	-5966.83	823.23	3263189.12	1334085.08	40.2466212	-104.5571267	0.47	
12579.00	89.850	180.550	6746.54	6106.94	-6061.83	823.09	3263188.97	1333990.09	40.2463604	-104.5571309	0.97	
12673.00	89.630	180.180	6746.96	6200.62	-6155.82	822.49	3263188.37	1333896.09	40.2461024	-104.5571366	0.46	
12768.00	90.030	181.480	6747.25	6295.23	-6250.81	821.11	3263186.99	1333801.11	40.2458418	-104.5571452	1.43	
12863.00	89.600	179.060	6747.55	6389.91	-6345.80	820.66	3263186.55	1333706.12	40.2455810	-104.5571504	2.59	
12958.00	90.310	179.340	6747.63	6484.72	-6440.79	821.99	3263187.87	1333611.14	40.2453203	-104.5571493	0.80	
13053.00	91.260	179.630	6746.33	6579.50	-6535.78	822.84	3263188.73	1333516.16	40.2450595	-104.5571498	1.05	
13147.00	90.060	179.310	6745.24	6673.28	-6629.77	823.71	3263189.60	1333422.17	40.2448015	-104.5571503	1.32	
13242.00	90.400	179.670	6744.86	6768.06	-6724.76	824.56	3263190.44	1333327.18	40.2445407	-104.5571509	0.52	
13336.00	90.990	179.340	6743.72	6861.84	-6818.75	825.37	3263191.25	1333233.20	40.2442827	-104.5571515	0.72	
13431.00	90.830	179.740	6742.21	6956.60	-6913.74	826.13	3263192.02	1333138.22	40.2440220	-104.5571524	0.45	
13526.00	90.520	180.370	6741.09	7051.31	-7008.73	826.04	3263191.93	1333043.23	40.2437613	-104.5571564	0.74	
13620.00	90.250	180.040	6740.46	7145.01	-7102.73	825.71	3263191.59	1332949.24	40.2435033	-104.5571612	0.45	
13715.00	90.370	179.930	6739.95	7239.73	-7197.72	825.73	3263191.61	1332854.24	40.2432425	-104.5571647	0.17	
13810.00	90.430	179.670	6739.28	7334.48	-7292.72	826.06	3263191.95	1332759.25	40.2429818	-104.5571671	0.28	
13904.00	90.490	179.530	6738.53	7428.25	-7386.72	826.72	3263192.60	1332665.26	40.2427237	-104.5571683	0.16	
14094.00	89.880	180.030	6737.92	7617.75	-7576.71	827.45	3263193.33	1332475.27	40.2422022	-104.5571730	0.42	



REFERENCE WELLPATH IDENTIFICATION			
Operator	NOBLE ENERGY, INC	Well	Guttersen D09-755
Field	WELD COUNTY (NOBLE NAD 83 GRID)	API	0512348951
Facility	SEC.33-T04N-R64W	Wellbore	Guttersen D09-755 AWB
Slot	SLOT#42 Guttersen D09-755 (467'FSL & 1539'FWL,SEC.33)		

## WELLPATH DATA (186 stations)

MD [ft]	Inclination [°]	Azimuth [°]	TVD [ft]	Vert Sect [ft]	North [ft]	East [ft]	Grid East [US ft]	Grid North [US ft]	Latitude	Longitude	DLS [°/100ft]	Comments
14188.00	89.940	179.560	6738.06	7711.50	-7670.71	827.78	3263193.67	1332381.28	40.2419442	-104.5571753	0.50	
14293.00	90.340	179.150	6737.81	7816.28	-7775.70	828.97	3263194.85	1332276.29	40.2416560	-104.5571751	0.55	
14388.00	89.940	183.950	6737.58	7910.74	-7870.64	826.40	3263192.28	1332181.36	40.2413955	-104.5571879	5.07	
14482.00	89.450	182.670	6738.08	8003.89	-7964.48	820.97	3263186.85	1332087.52	40.2411380	-104.5572109	1.46	
14577.00	90.650	181.570	6737.99	8098.28	-8059.41	817.46	3263183.34	1331992.59	40.2408776	-104.5572271	1.71	
14671.00	89.660	178.310	6737.74	8192.00	-8153.40	817.55	3263183.44	1331898.61	40.2406196	-104.5572304	3.62	
14766.00	90.090	178.980	6737.95	8286.87	-8248.37	819.80	3263185.68	1331803.64	40.2403589	-104.5572259	0.84	
14860.00	90.150	180.310	6737.75	8380.63	-8342.37	820.38	3263186.27	1331709.65	40.2401008	-104.5572274	1.42	
14955.00	90.250	178.710	6737.42	8475.41	-8437.36	821.20	3263187.08	1331614.66	40.2398401	-104.5572281	1.69	
15049.00	90.550	180.190	6736.76	8569.20	-8531.35	822.10	3263187.98	1331520.68	40.2395821	-104.5572285	1.61	
15144.00	89.140	178.390	6737.02	8664.00	-8626.34	823.27	3263189.16	1331425.69	40.2393213	-104.5572279	2.41	
15239.00	89.320	177.360	6738.29	8758.91	-8721.26	826.80	3263192.68	1331330.77	40.2390607	-104.5572189	1.10	
15334.00	89.780	179.190	6739.04	8853.81	-8816.21	829.66	3263195.54	1331235.83	40.2388000	-104.5572123	1.99	
15428.00	89.660	179.440	6739.50	8947.61	-8910.20	830.78	3263196.66	1331141.84	40.2385419	-104.5572118	0.30	
15523.00	89.540	179.130	6740.16	9042.41	-9005.19	831.97	3263197.85	1331046.85	40.2382812	-104.5572112	0.35	
15617.00	89.510	176.290	6740.94	9136.34	-9099.10	835.72	3263201.60	1330952.95	40.2380233	-104.5572013	3.02	
15712.00	90.800	178.270	6740.69	9231.29	-9193.99	840.23	3263206.11	1330858.07	40.2377627	-104.5571888	2.49	
15807.00	89.750	178.370	6740.23	9326.19	-9288.95	843.01	3263208.90	1330763.11	40.2375020	-104.5571824	1.11	
15901.00	89.480	177.160	6740.86	9420.12	-9382.87	846.68	3263212.56	1330669.19	40.2372441	-104.5571729	1.32	
15996.00	89.320	179.320	6741.86	9515.01	-9477.82	849.60	3263215.48	1330574.25	40.2369834	-104.5571660	2.28	
16090.00	89.260	181.370	6743.02	9608.68	-9571.80	849.03	3263214.91	1330480.27	40.2367254	-104.5571716	2.18	
16185.00	89.170	180.910	6744.32	9703.23	-9666.77	847.14	3263213.02	1330385.30	40.2364648	-104.5571820	0.49	
16280.00	89.320	180.050	6745.58	9797.88	-9761.76	846.35	3263212.23	1330290.32	40.2362041	-104.5571885	0.92	
16374.00	89.690	181.520	6746.39	9891.49	-9855.75	845.06	3263210.94	1330196.34	40.2359462	-104.5571967	1.61	
16469.00	89.410	180.300	6747.13	9986.08	-9950.73	843.55	3263209.43	1330101.36	40.2356855	-104.5572057	1.32	
16564.00	90.150	182.210	6747.50	10080.62	-10045.70	841.47	3263207.35	1330006.39	40.2354249	-104.5572168	2.16	
16658.00	89.820	181.630	6747.52	10174.05	-10139.65	838.32	3263204.20	1329912.45	40.2351671	-104.5572316	0.71	
16753.00	89.570	180.440	6748.03	10268.62	-10234.63	836.60	3263202.49	1329817.47	40.2349064	-104.5572414	1.28	
16848.00	89.570	178.740	6748.74	10363.39	-10329.62	837.28	3263203.17	1329722.49	40.2346457	-104.5572426	1.79	
16943.00	89.450	177.830	6749.55	10458.28	-10424.57	840.13	3263206.01	1329627.54	40.2343850	-104.5572360	0.97	



REFERENCE WELLPATH IDENTIFICATION			
Operator	NOBLE ENERGY, INC	Well	Guttersen D09-755
Field	WELD COUNTY (NOBLE NAD 83 GRID)	API	0512348951
Facility	SEC.33-T04N-R64W	Wellbore	Guttersen D09-755 AWB
Slot	SLOT#42 Guttersen D09-755 (467'FSL & 1539'FWL,SEC.33)		

WELLPATH DATA (186 stations) † = interpolated, ‡ = extrapolated station												
MD [ft]	Inclination [°]	Azimuth [°]	TVD [ft]	Vert Sect [ft]	North [ft]	East [ft]	Grid East [US ft]	Grid North [US ft]	Latitude	Longitude	DLS [°/100ft]	Comments
17037.00	89.690	177.470	6750.26	10552.22	-10518.49	843.98	3263209.86	1329533.62	40.2341271	-104.5572258	0.46	
17132.00	89.780	175.990	6750.70	10647.20	-10613.33	849.40	3263215.28	1329438.79	40.2338666	-104.5572100	1.56	
17227.00	89.910	175.690	6750.96	10742.20	-10708.08	856.29	3263222.17	1329344.04	40.2336063	-104.5571889	0.34	
17321.00	89.940	175.440	6751.08	10836.20	-10801.80	863.56	3263229.44	1329250.33	40.2333489	-104.5571664	0.27	
17338.00	89.970	175.390	6751.09	10853.20	-10818.75	864.92	3263230.80	1329233.38	40.2333023	-104.5571622	0.34	LAST BH MWD SURVEY
17362.00‡	89.970	175.390	6751.10	10877.20	-10842.67	866.85	3263232.73	1329209.46	40.2332366	-104.5571562	0.00	PROJECTION TO BIT

HOLE & CASING SECTIONS - Ref Wellbore: Guttersen D09-755 AWB Ref Wellpath: Guttersen D09-755 AWP									
String/Diameter	Start MD [ft]	End MD [ft]	Interval [ft]	Start TVD [ft]	End TVD [ft]	Start N/S [ft]	Start E/W [ft]	End N/S [ft]	End E/W [ft]
9.625in Casing Surface	30.00	1929.00	1899.00	30.00	1928.89	0.00	-0.03	-4.09	-12.99

REFERENCE WELLPATH IDENTIFICATION			
Operator	NOBLE ENERGY, INC	Well	Guttersen D09-755
Field	WELD COUNTY (NOBLE NAD 83 GRID)	API	0512348951
Facility	SEC.33-T04N-R64W	Wellbore	Guttersen D09-755 AWB
Slot	SLOT#42 Guttersen D09-755 (467'FSL & 1539'FWL,SEC.33)		

TARGETS								
Name	TVD [ft]	North [ft]	East [ft]	Grid East [US ft]	Grid North [US ft]	Latitude	Longitude	Shape
SEC.04-T03N-R64W	-1.00	-0.22	-89.87	3262276.06	1340051.42	40.2630250	-104.5601710	polygon
2D Polygon: dimensions not calculated								
SEC.09-T03N-R64W	-1.00	-0.22	-89.87	3262276.06	1340051.42	40.2630250	-104.5601710	polygon
2D Polygon: dimensions not calculated								
Guttersen D09-755 BHL REV-1 (200'FSL & 2306'FWL,SEC.09)	6745.00	-10843.65	829.32	3263195.20	1329208.49	40.2332350	-104.5572907	point
Guttersen D09-755 TPZ REV-1 (200'FNL & 2350'FWL,SEC.04)	6745.00	-658.55	817.91	3263183.80	1339393.12	40.2611916	-104.5569436	point

WELLPATH COMPOSITION - Ref Wellbore: Guttersen D09-755 AWB						Ref Wellpath: Guttersen D09-755 AWP	
Start MD [ft]	End MD [ft]	Positional Uncertainty Model	Log Name/Comment		Wellbore	Survey Date	
0.00	1925.00	Gyrodatta 2015 - GC+DROP+COND	Gyrodatta 2015 - GC+DROP+COND 13-1/2" <84 - 1925>		Guttersen D09-755 AWP	11/30/2020	
1925.00	17362.00	OWSG MWD rev2 (MS+IFR1) NOBLE	OWSG MWD rev2 (MS+IFR1) NOBLE 8-1/2" <1982 - 17338>		Guttersen D09-755 AWP	12/11/2020	

REFERENCE WELLPATH IDENTIFICATION			
Operator	NOBLE ENERGY, INC	Well	Guttersen D09-755
Field	WELD COUNTY (NOBLE NAD 83 GRID)	API	0512348951
Facility	SEC.33-T04N-R64W	Wellbore	Guttersen D09-755 AWB
Slot	SLOT#42 Guttersen D09-755 (467'FSL & 1539'FWL,SEC.33)		

WELLPATH COMMENTS				
MD [ft]	Inclination [°]	Azimuth [°]	TVD [ft]	Comment
84.00	0.370	271.680	84.00	FIRST GYRODATA SURVEY
1925.00	1.600	246.140	1924.89	LAST GYRODATA SURVEY
1982.00	0.700	265.880	1981.88	FIRST BH MWD SURVEY
17338.00	89.970	175.390	6751.09	LAST BH MWD SURVEY
17362.00	89.970	175.390	6751.10	PROJECTION TO BIT