

Name	Wellsite	Depth	Name	Wellsite	Depth	Name	Wellsite	Depth
Tien Bui	2020-12-08	2020-12-12						

Mud Properties Record

Date / Time	Run No.	Depth (ft)	Mud Type	Density (ppg)	Viscosity (cP)	pH	Fluid Loss (cm3)	Oil / Water	Source	Total Chlorides (ppm)	K+ (%)
2020-12-08 17:20	1	1939.00	Oil Based Mud	9.3	10	N/A	19.5	79.4/20.6	Active Pit	27000	0.00
2020-12-11 09:40	1	13500.00	Oil Based Mud	9.6	14	N/A	17.4	79.3/20.7	Active Pit	26500	0.00
2020-12-11 12:09	2	14243.00	Oil Based Mud	9.6	14	N/A	17.4	79.3/20.7	Active Pit	27000	0.00

Equipment and Service Data

Run No.	Tool	Serial Number	Measurement	Sensor Offset (ft)	Bit Offset (ft)	Max O.D. (in)	Min I.D. (in)
1	AutoTrak Curve Steering Unit	14856336	Near Bit Inclination	5.93	6.79	7.000	4.330
1	AutoTrak Curve Steering Unit	14856336	Near Bit VSS	5.93	6.79	7.000	4.330
1	AutoTrak Curve MWD	12316739	Gamma (single)	2.75	12.96	7.000	3.250
1	AutoTrak Curve MWD	12316739	Directional (mag)	12.27	22.48	7.000	3.250
2	AutoTrak Curve Steering Unit	14381506	Near Bit Inclination	5.93	6.79	7.000	4.330
2	AutoTrak Curve Steering Unit	14381506	Near Bit VSS	5.93	6.79	7.000	4.330
2	AutoTrak Curve MWD	14381899	Gamma (single)	2.75	12.96	7.000	3.250
2	AutoTrak Curve MWD	14381899	Directional (mag)	12.27	22.48	7.000	3.250

Service and Tool Mnemonics

Mnemonic	Name	Description
ATC SU	AutoTrak Curve SU	Auto Trak Curve Steering Unit
ATC MWD	AutoTrak Curve MWD	Auto Trak Curve MWD
ATC LCPM	AutoTrak Curve LCPM	Auto Trak Curve LCPM

Comments

1	Depth measurements were obtained from a depth control system not supplied or operated by Baker Hughes. Due to lack of control by Baker Hughes logging engineers, depth calibrations and measurements could not be independently verified.
2	Baker Hughes LWD Run 1 utilized 6 ¾ inch NaviGamma service (Gamma Ray and Directional) behind a 8 1/2 inch bit and rotary steerable assembly from 1939 to 17362 feet MD (1939 to 6751 feet TVD).
3	The Gamma Ray Apparent (GRAM) data is presented 0 to 300 API, per the customer's request.

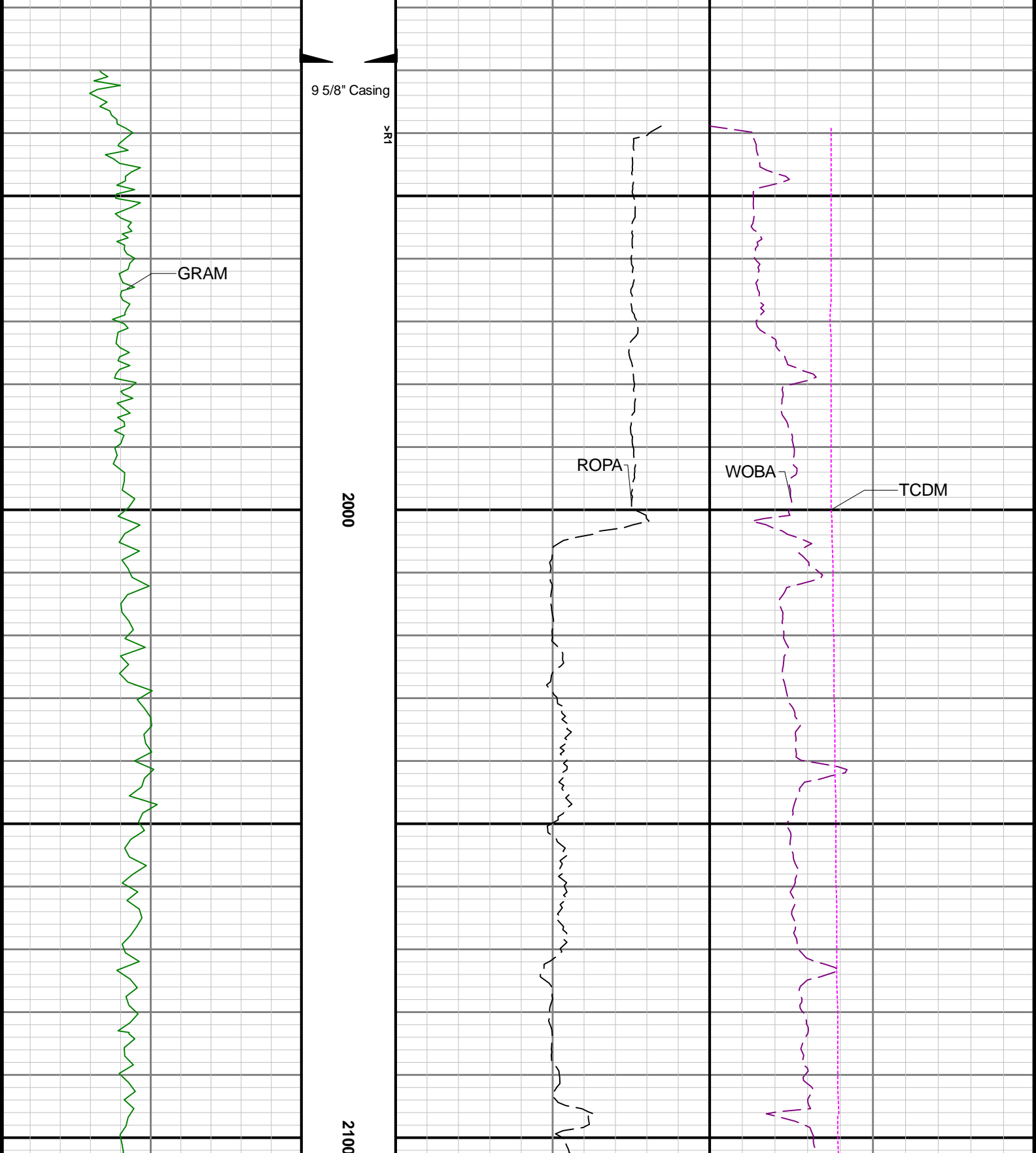
Remarks

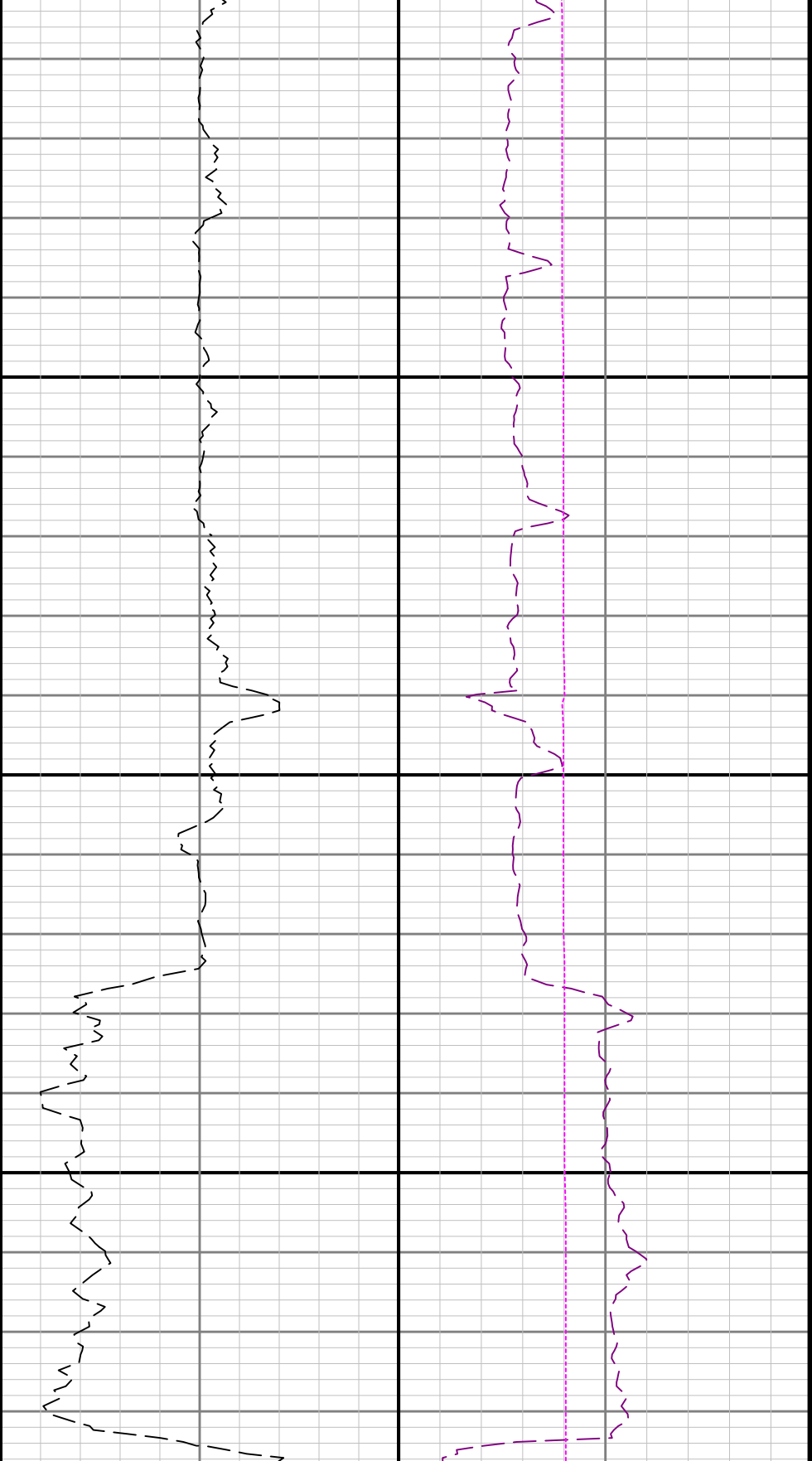
Number	Depth (ft)	Hole Section (in)	Run No.	Remark
--------	---------------	----------------------	---------	--------

Curve Mnemonics

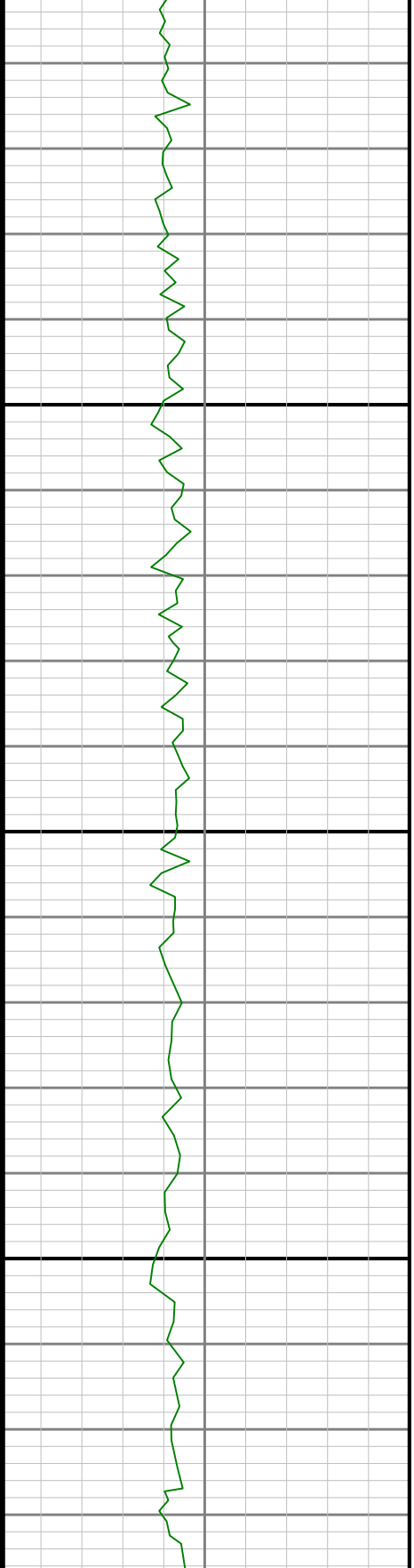
Presented Curves	Description	Units
ROPA	Depth Averaged ROP 3 ft Average	ft/h
WOBA	Weight On Bit 1 ft Average	klb
GRAM	Gamma Ray - Apparent - Memory 0.5 ft Average	API
TCDM	Directional Real-Time Survey Temperature	degF

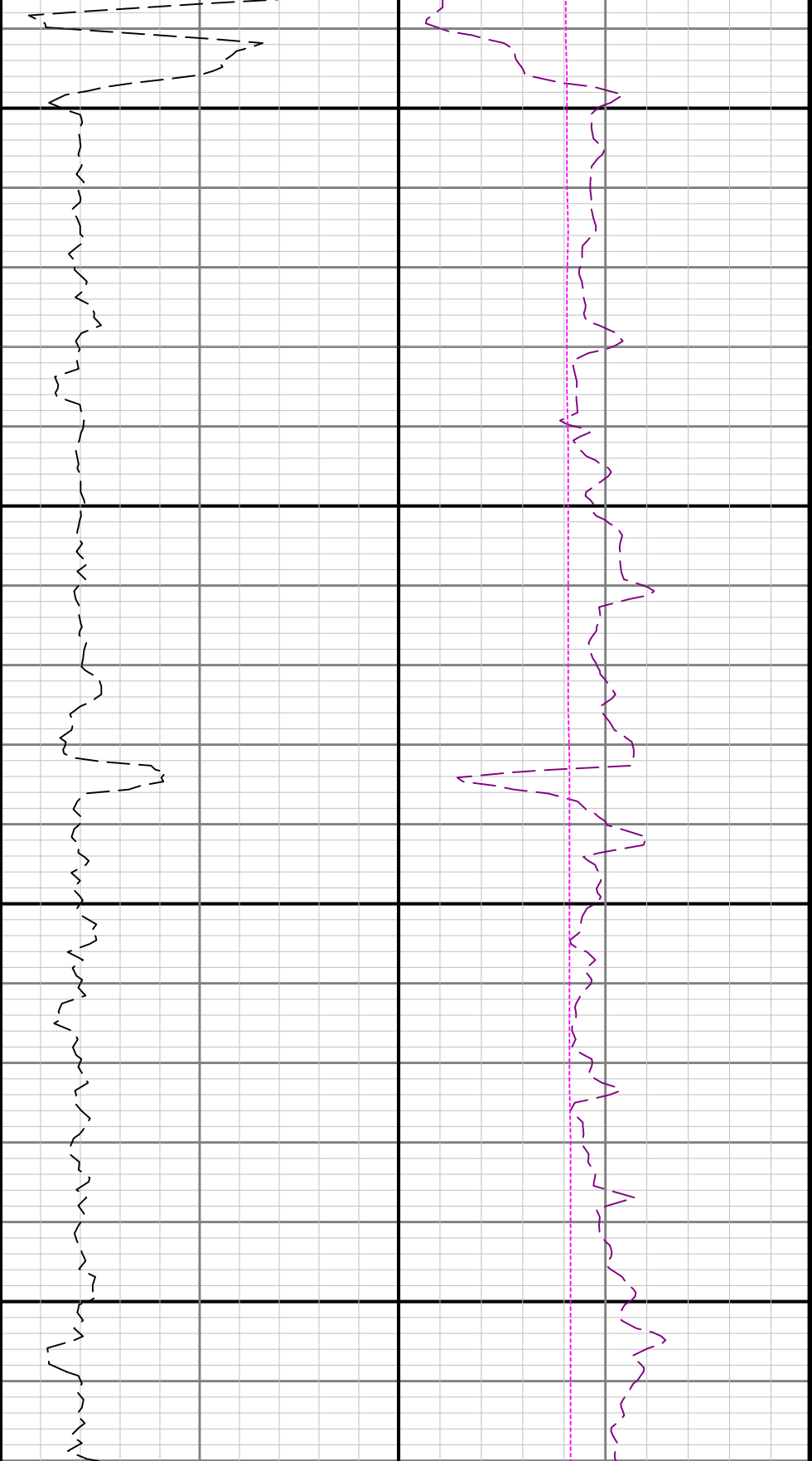
Gamma Ray - Apparent 0.5 ft Average GRAM	TVD 1:240 feet	Depth Averaged ROP 3 ft Average ROPA	Weight On Bit, Average 1 ft Average WOBA
0 300		1000 0	0 50
API		ft/h	klb
			Downhole Temperature TCDM
			0 300
			degF





2200





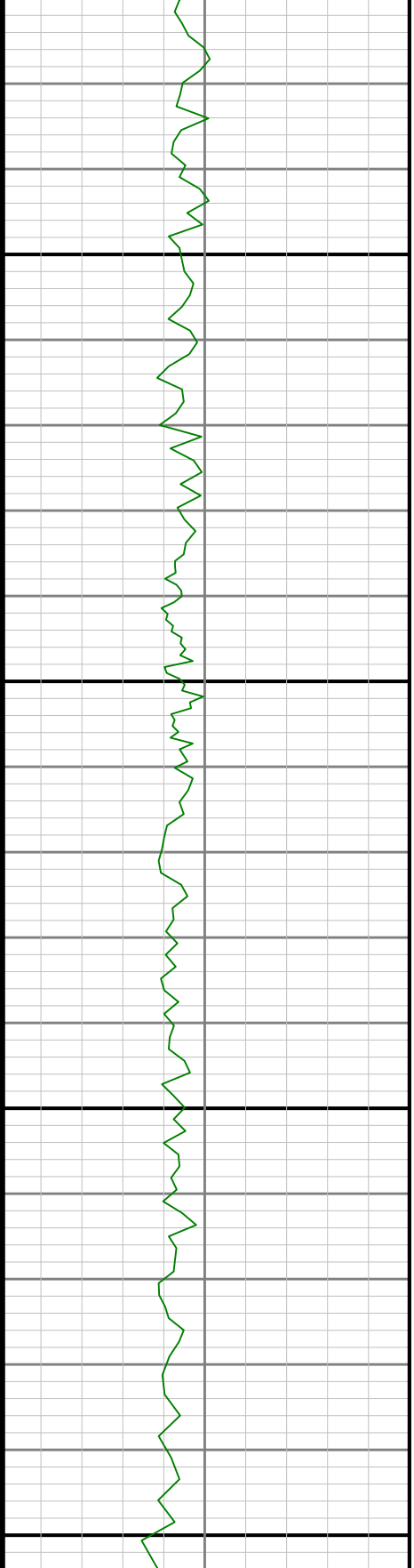
2300

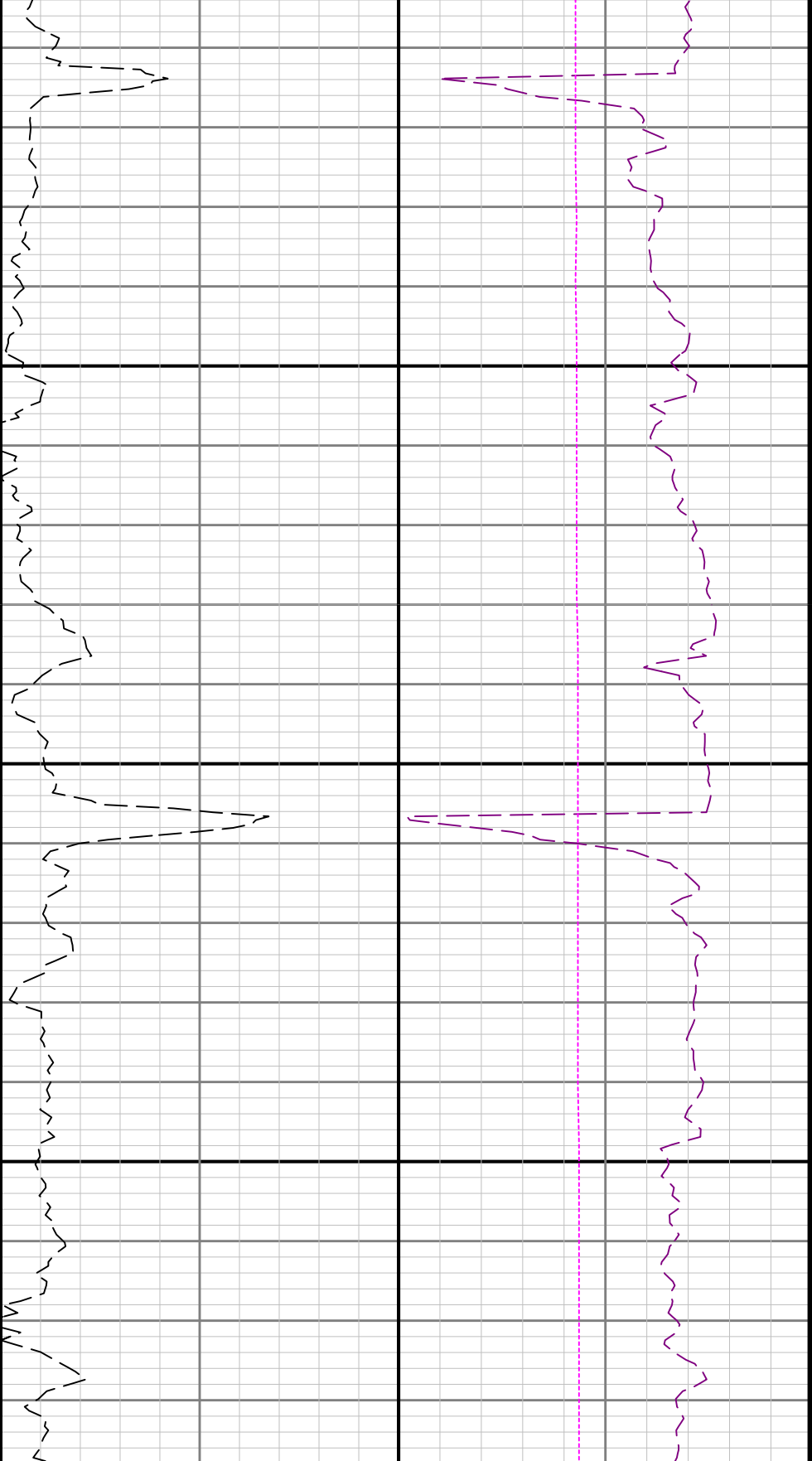
2400



2500

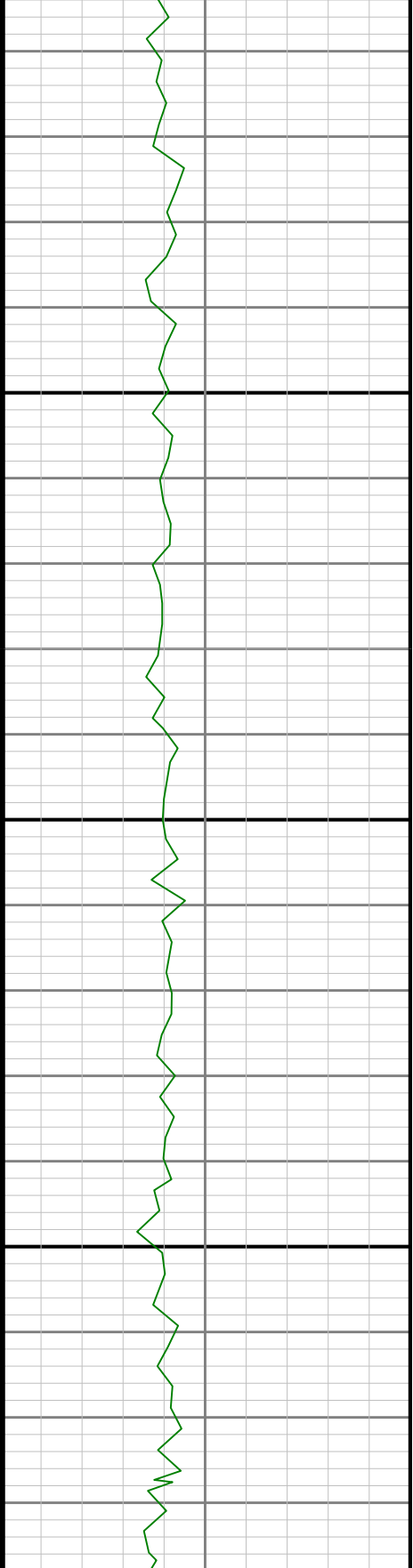
2600

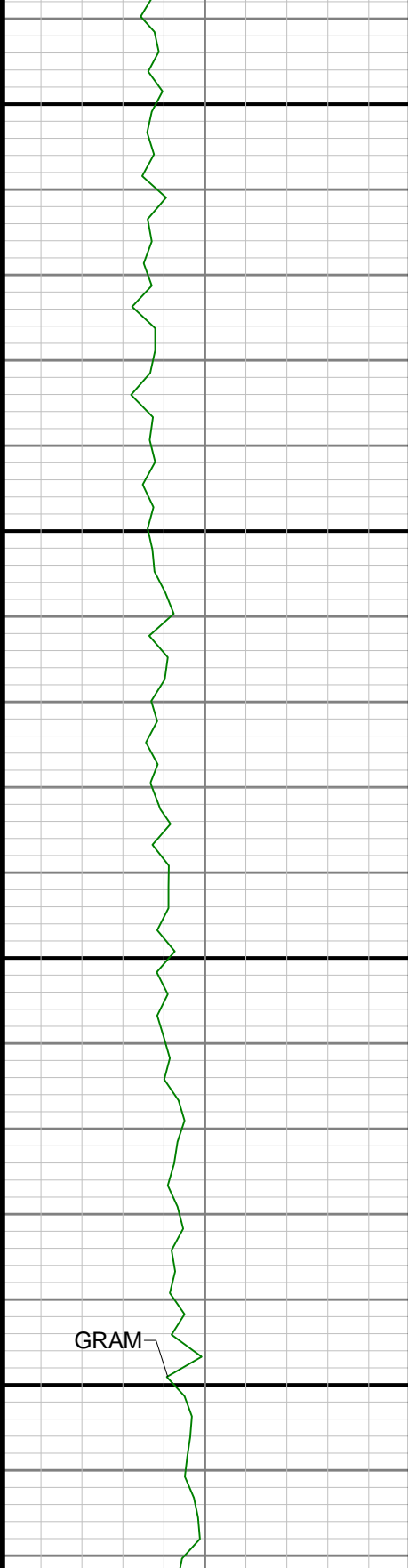




2700

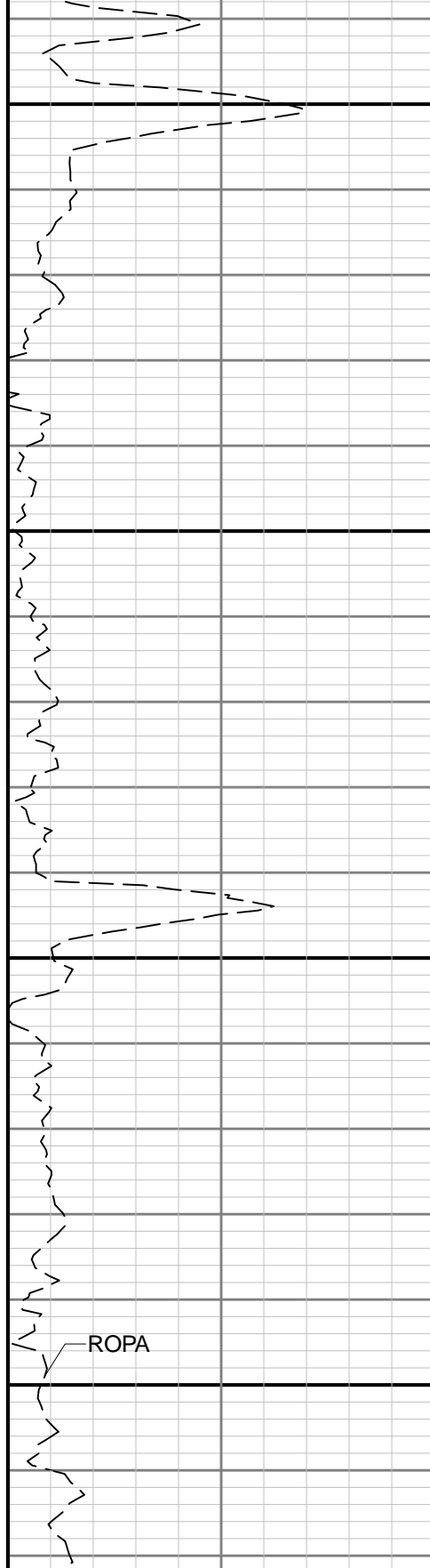
2800





2900

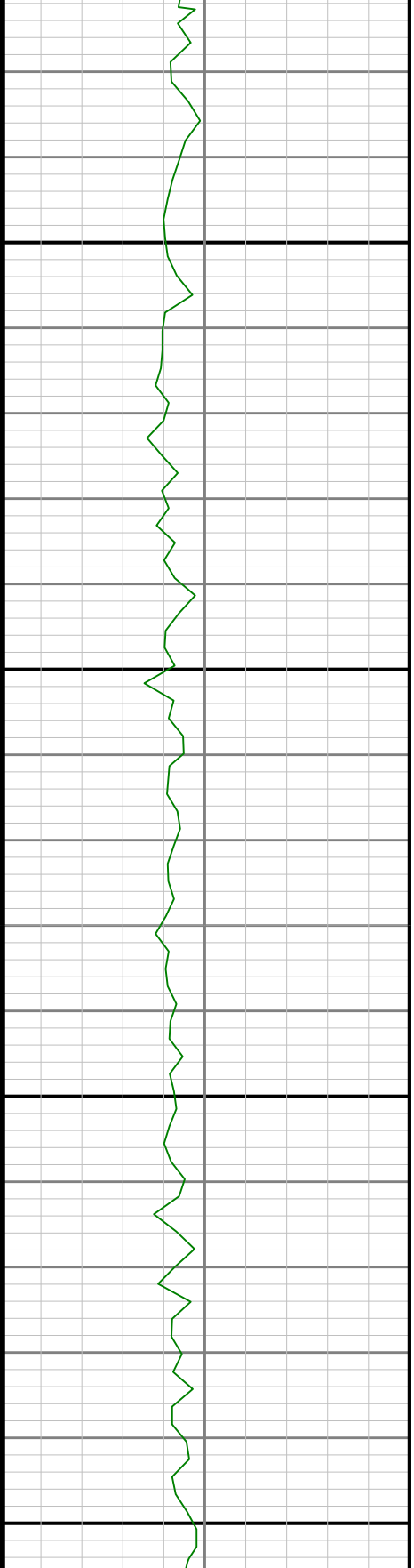
3000

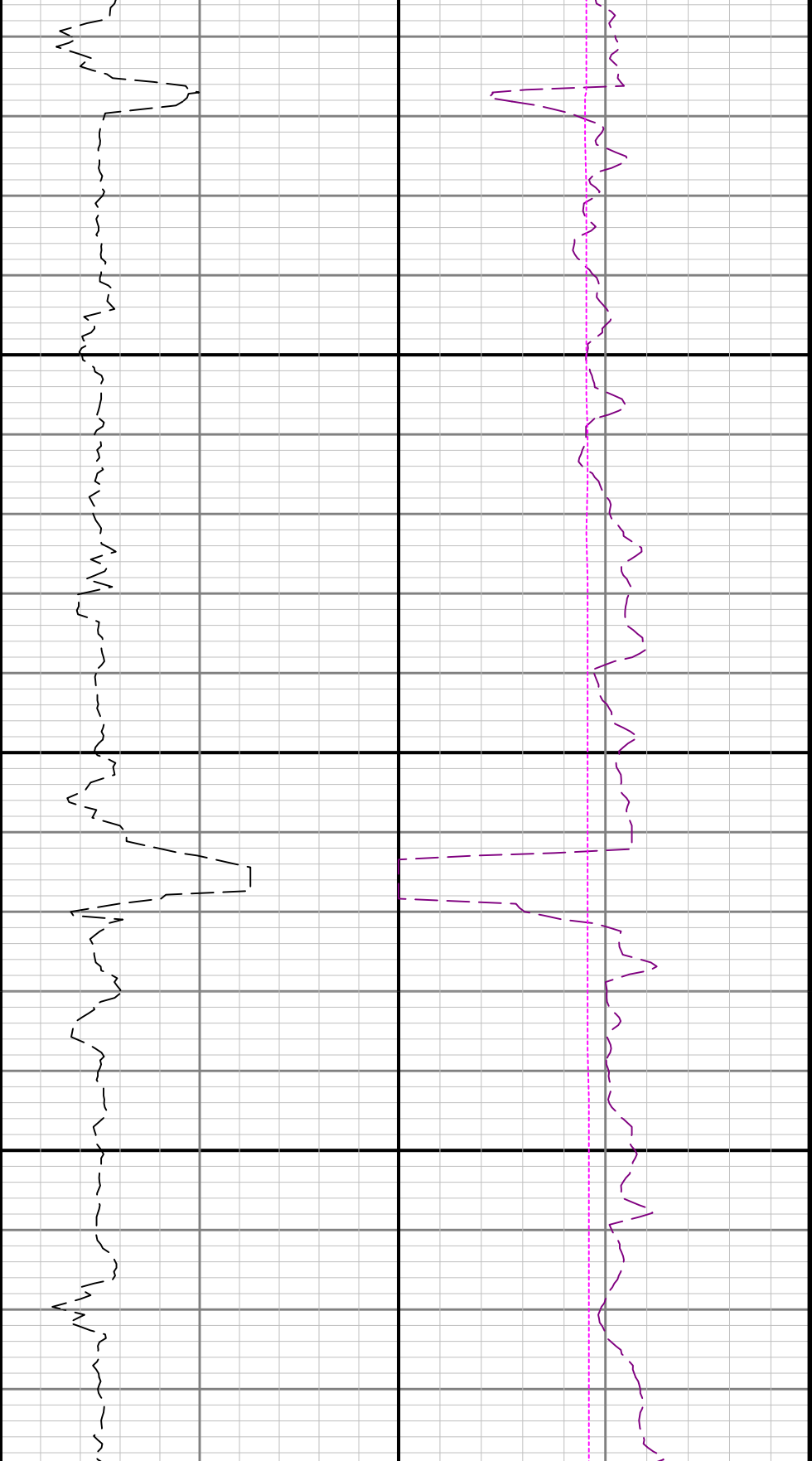




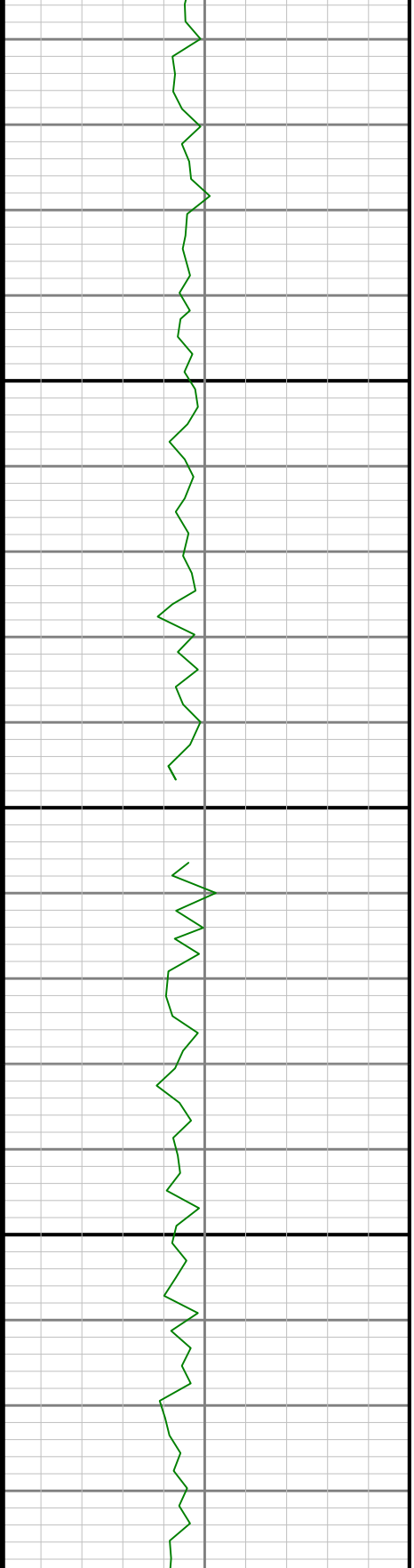
3100

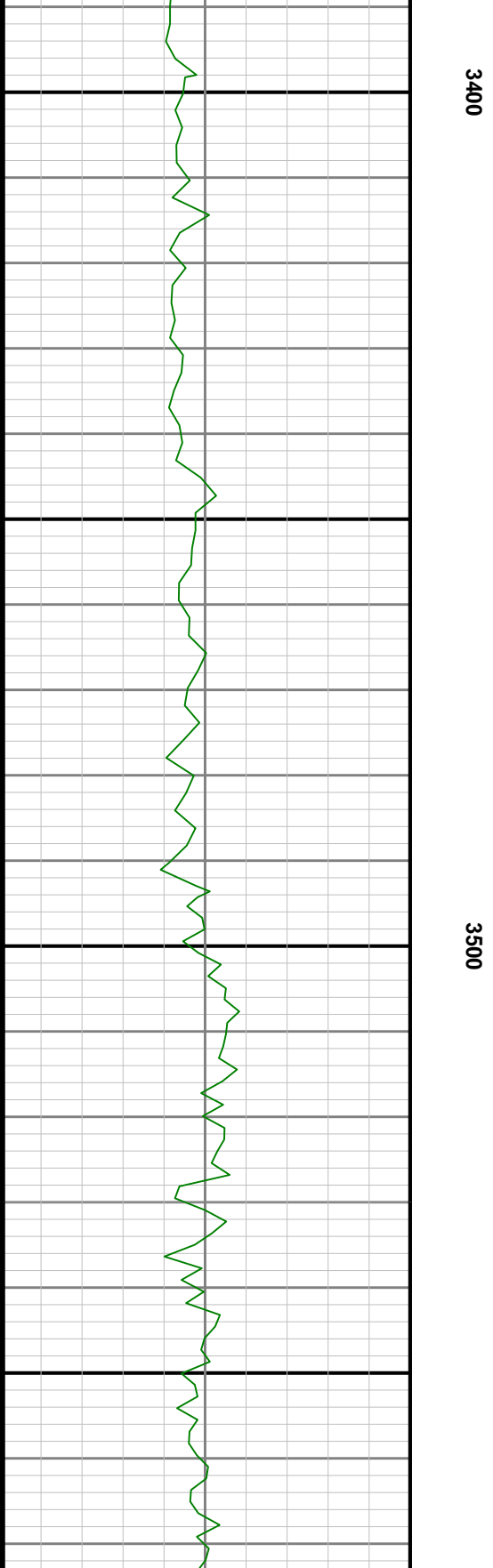
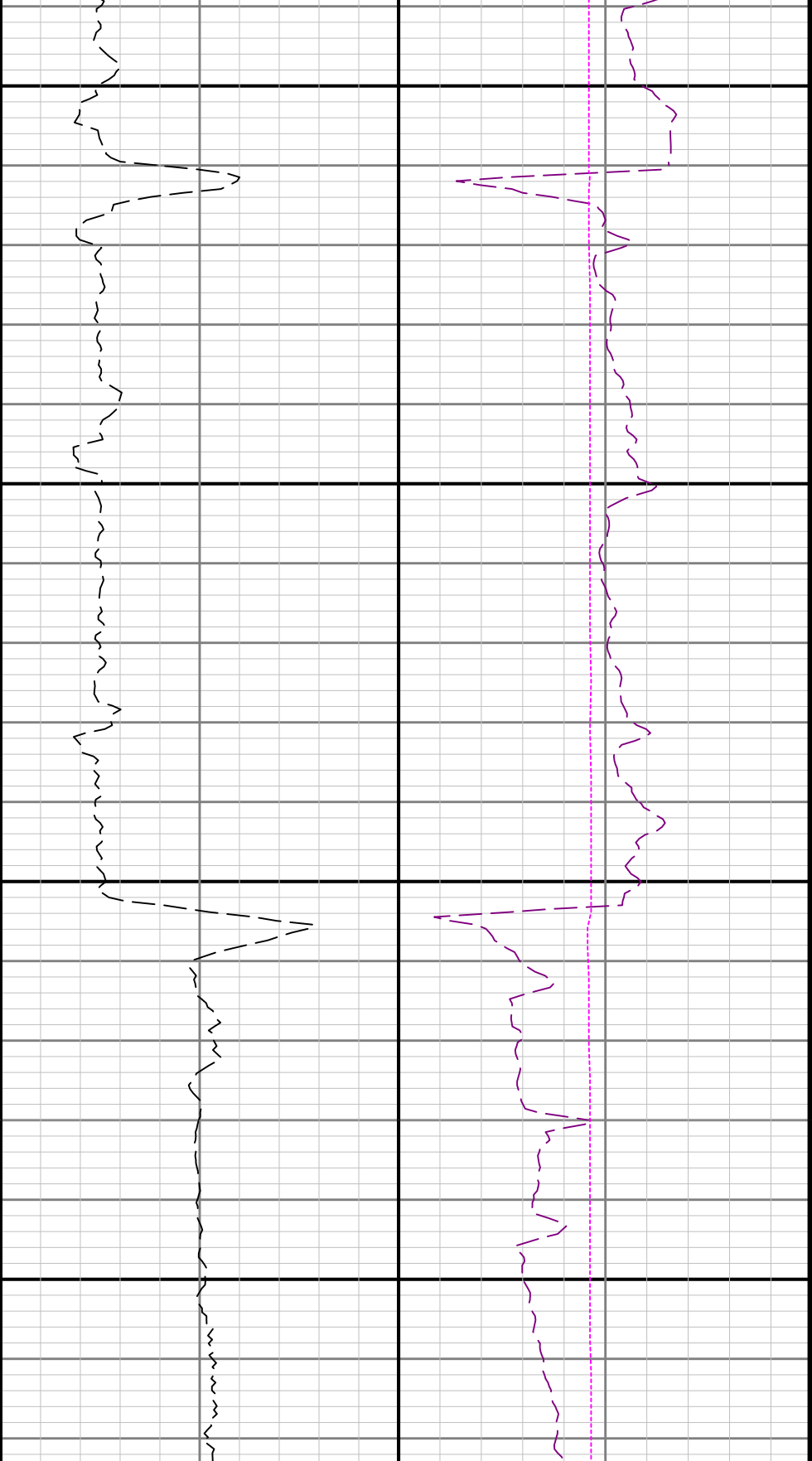
3200

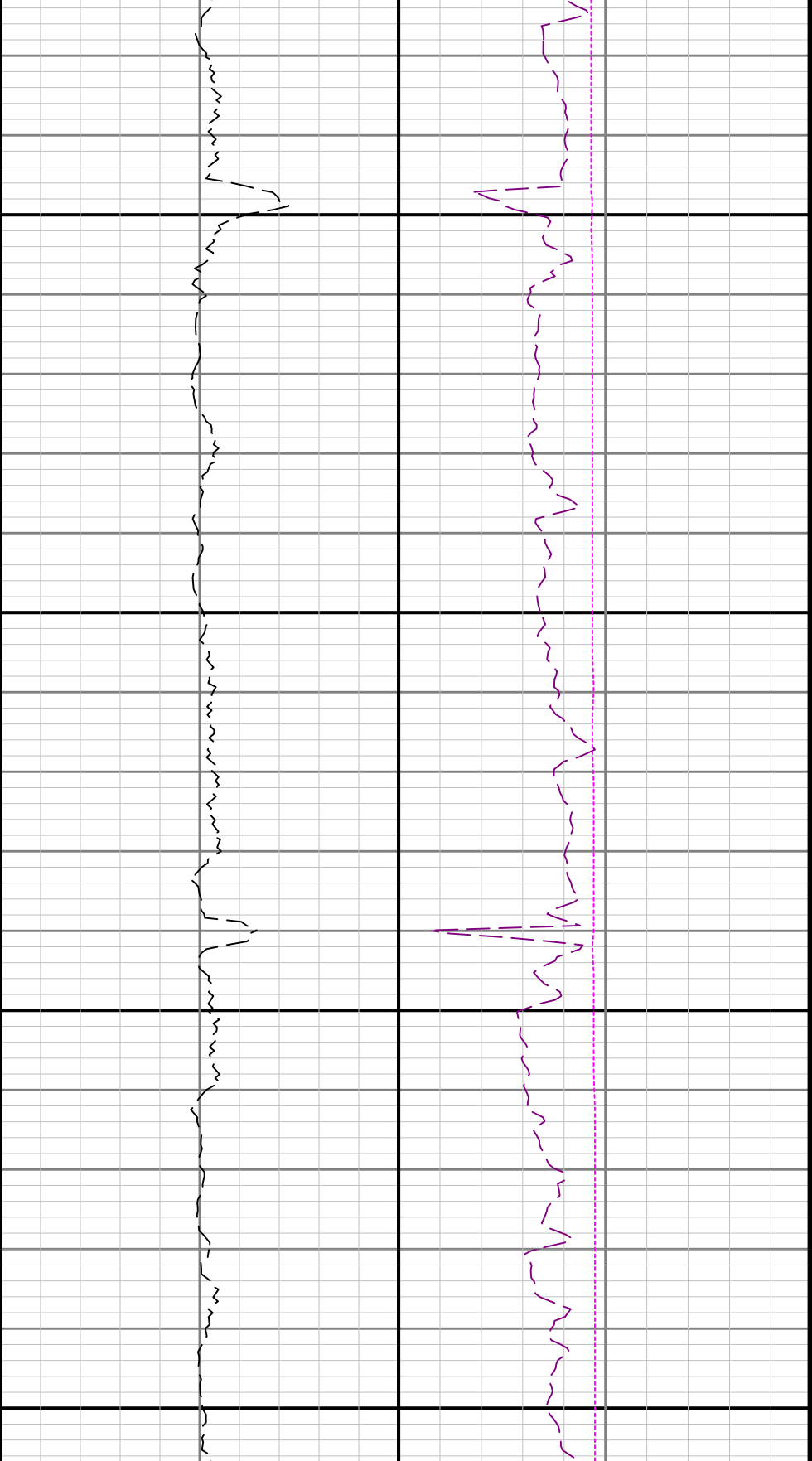




3300

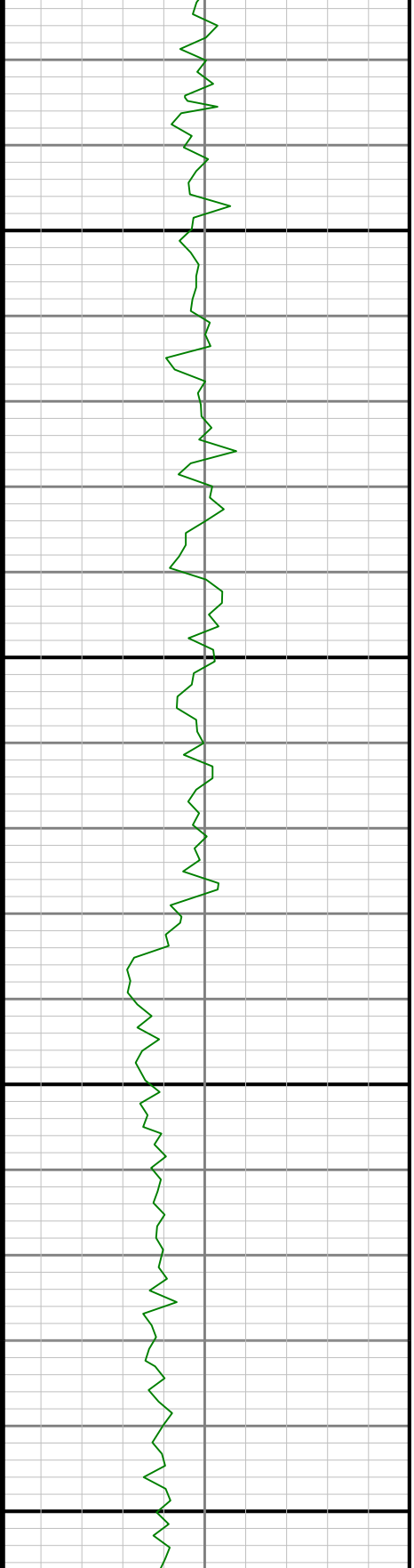


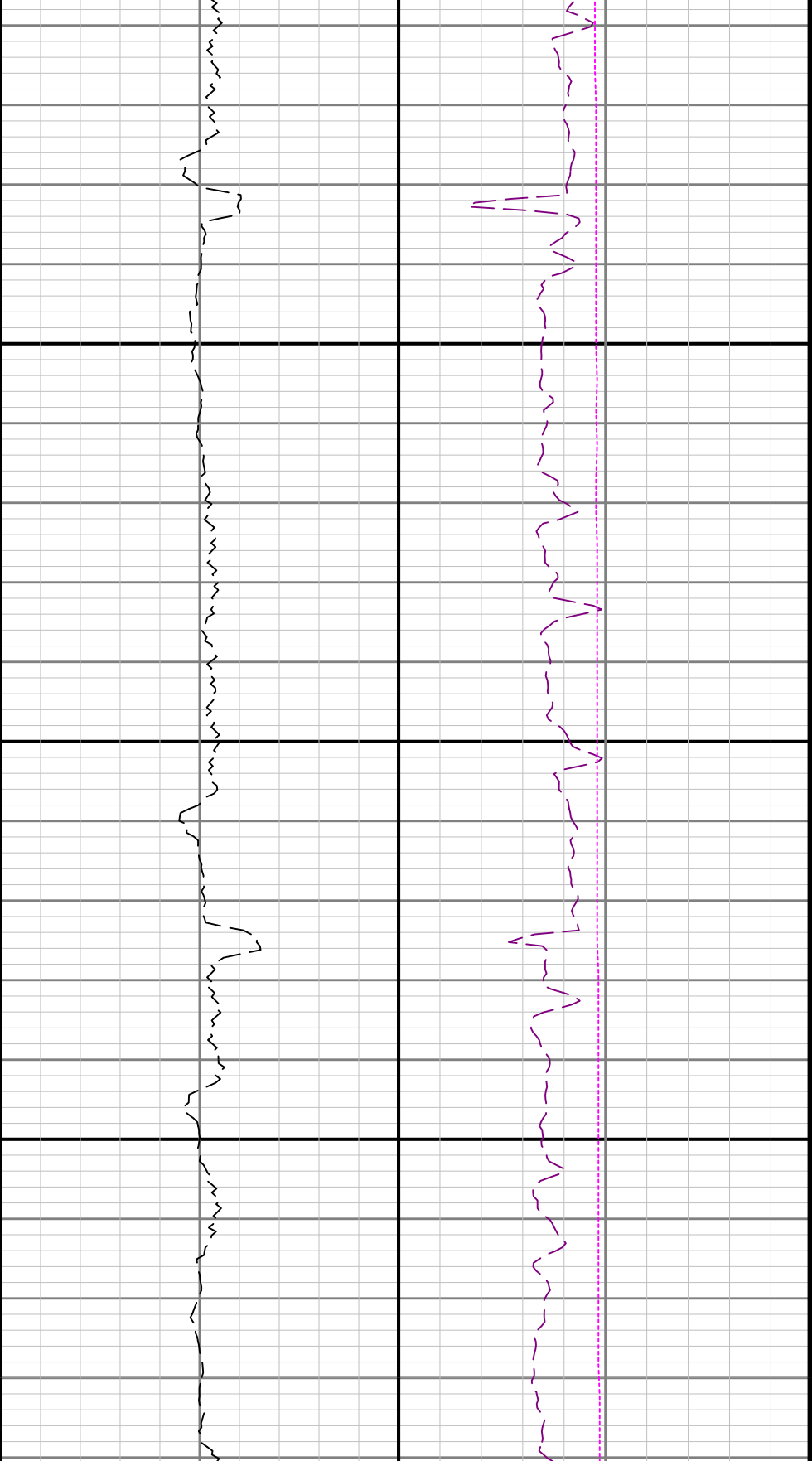




3600

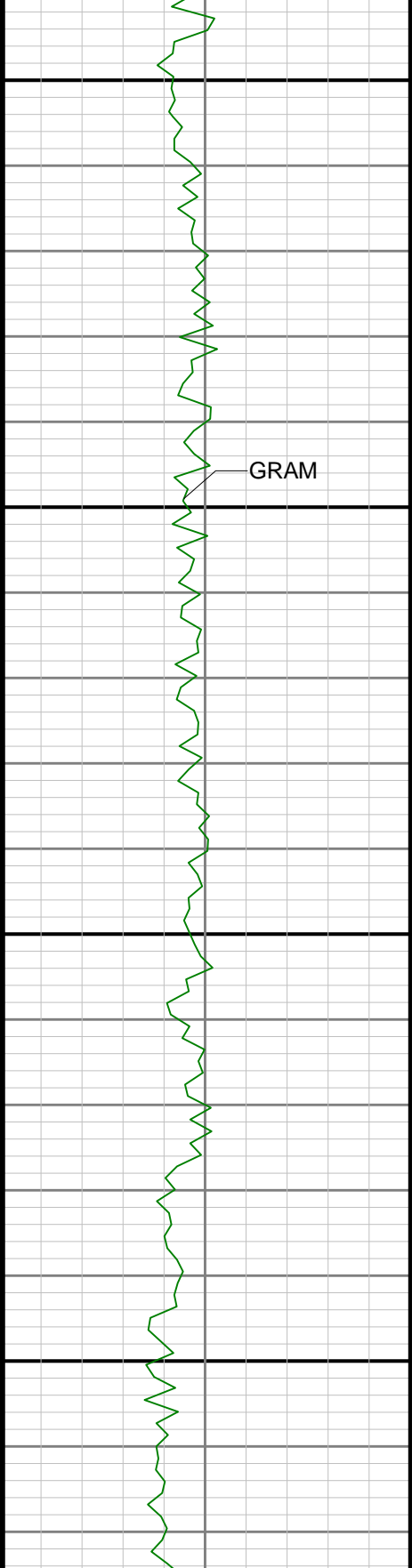
3700





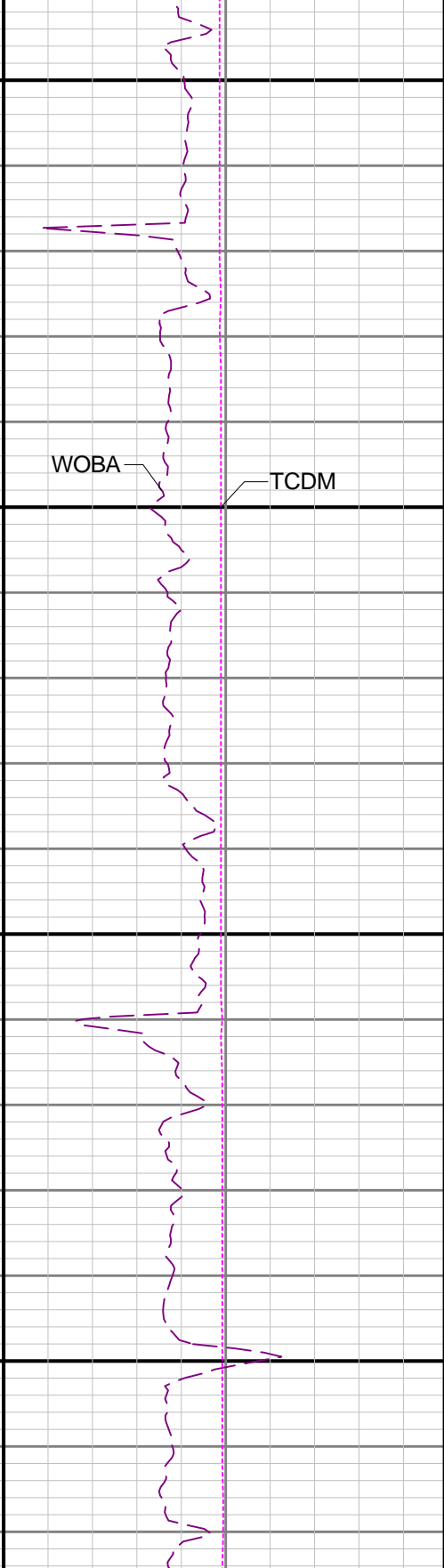
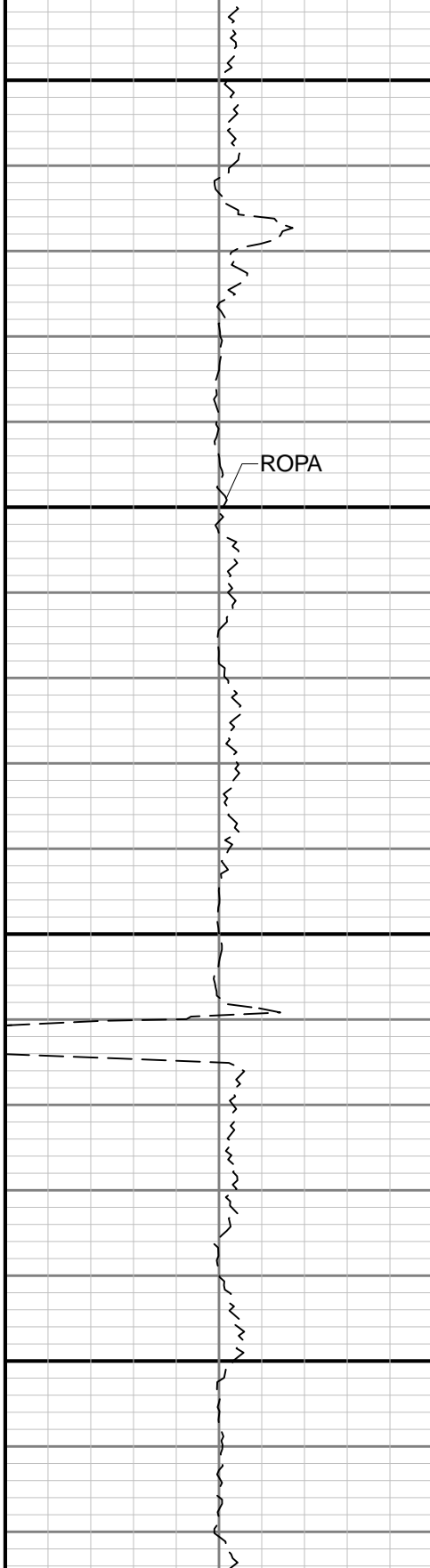
3800

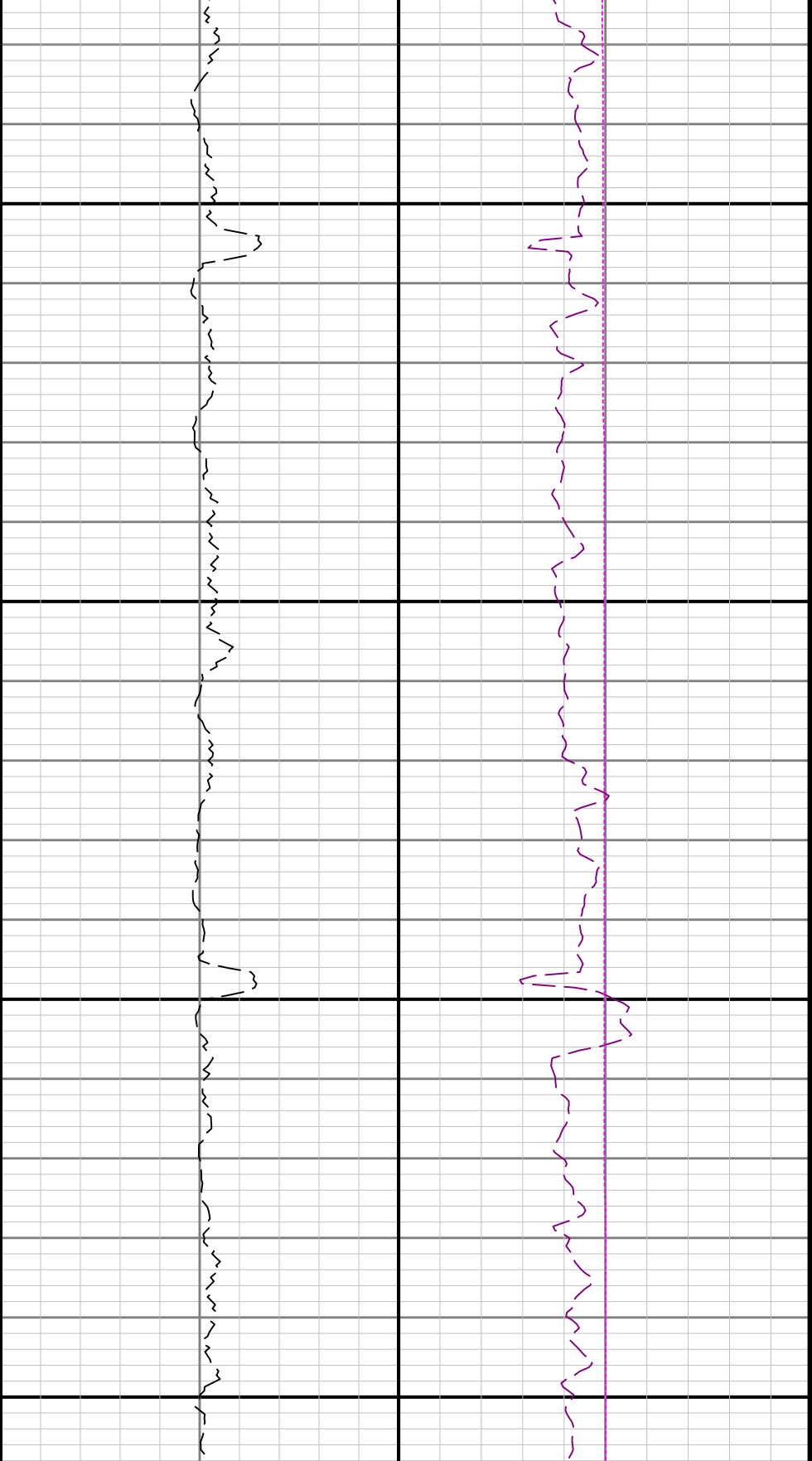
3900



4000

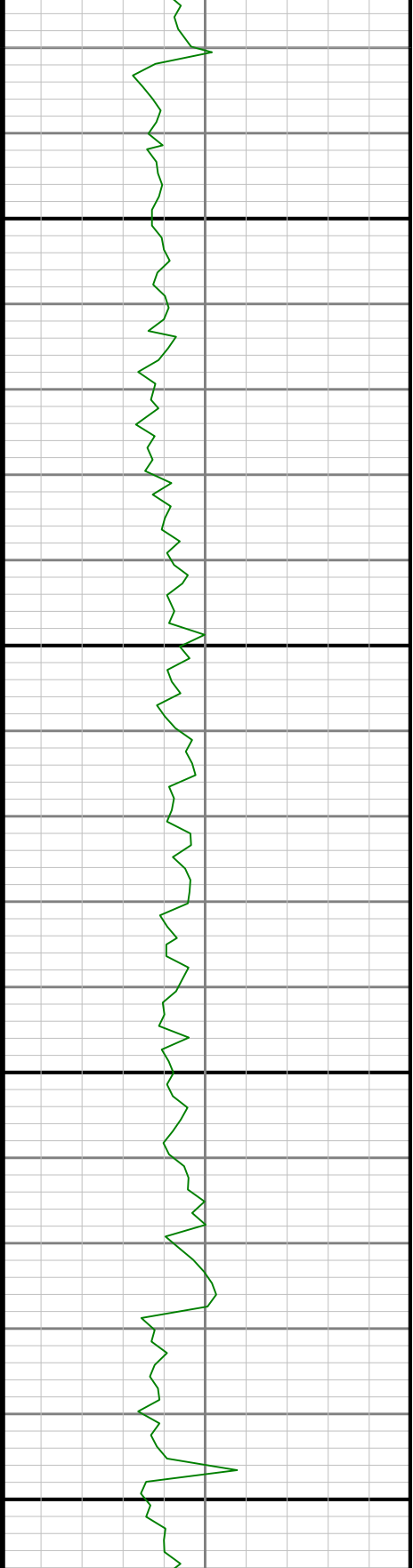
4100

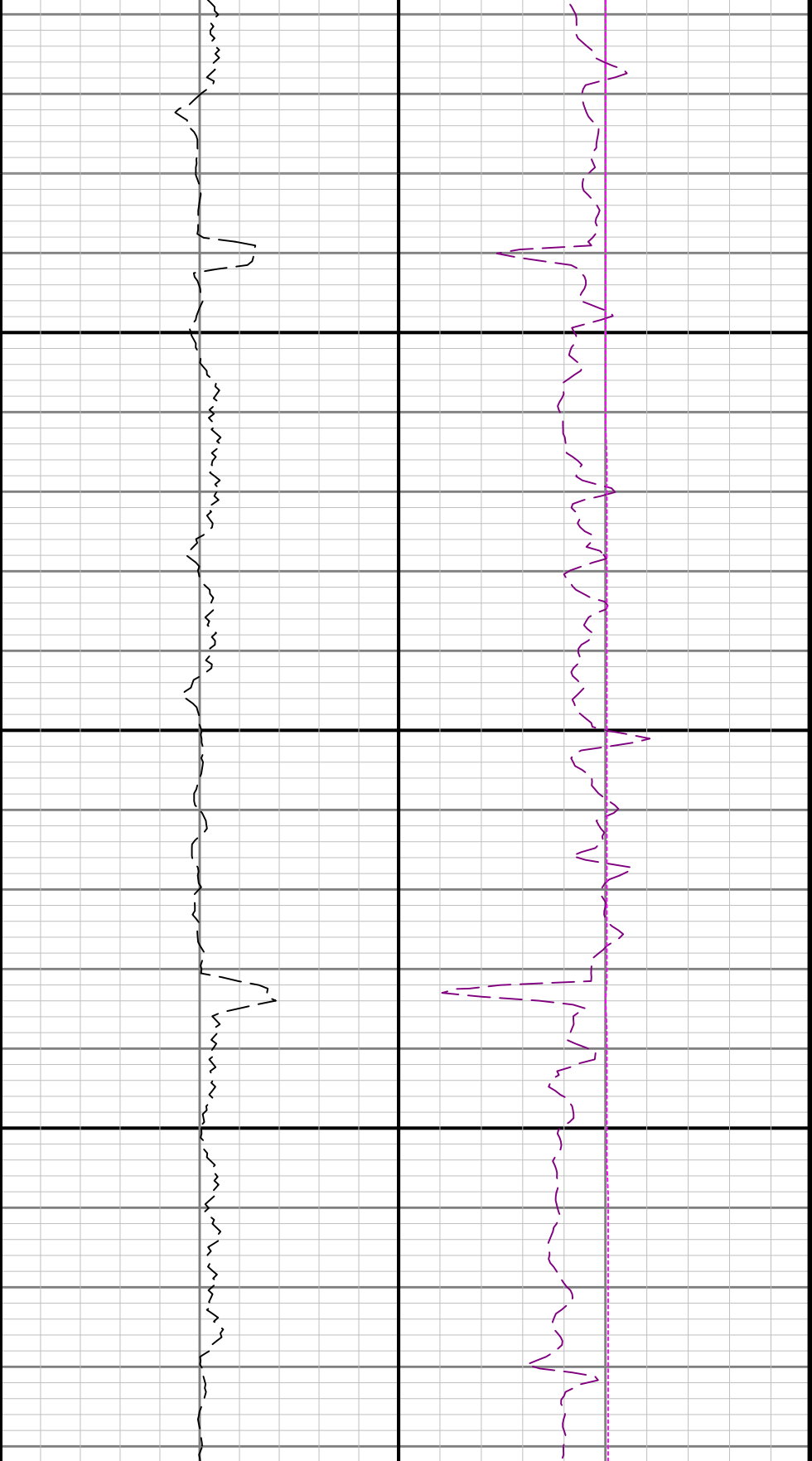




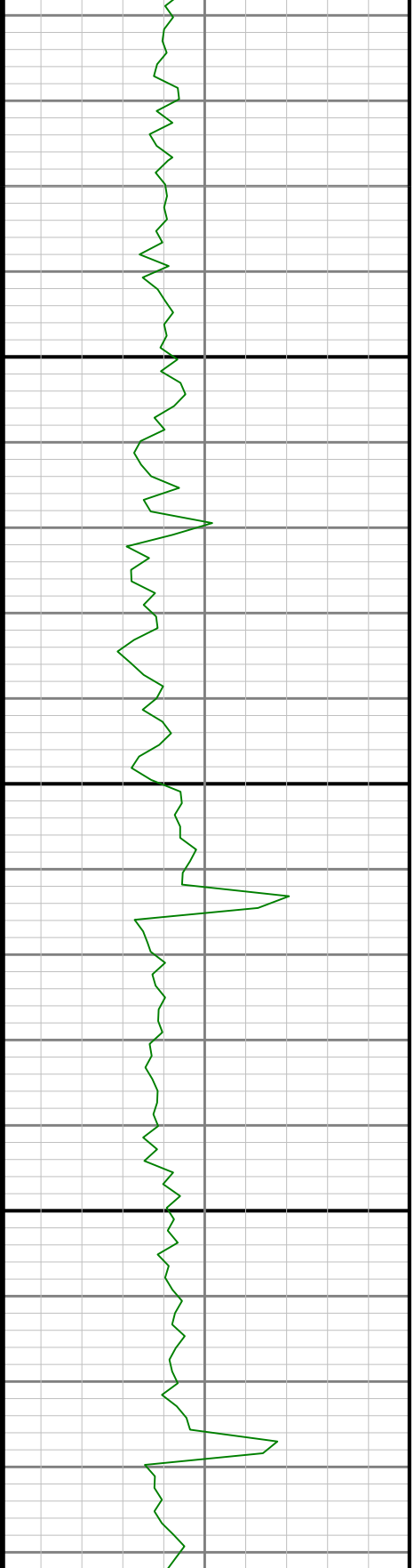
4200

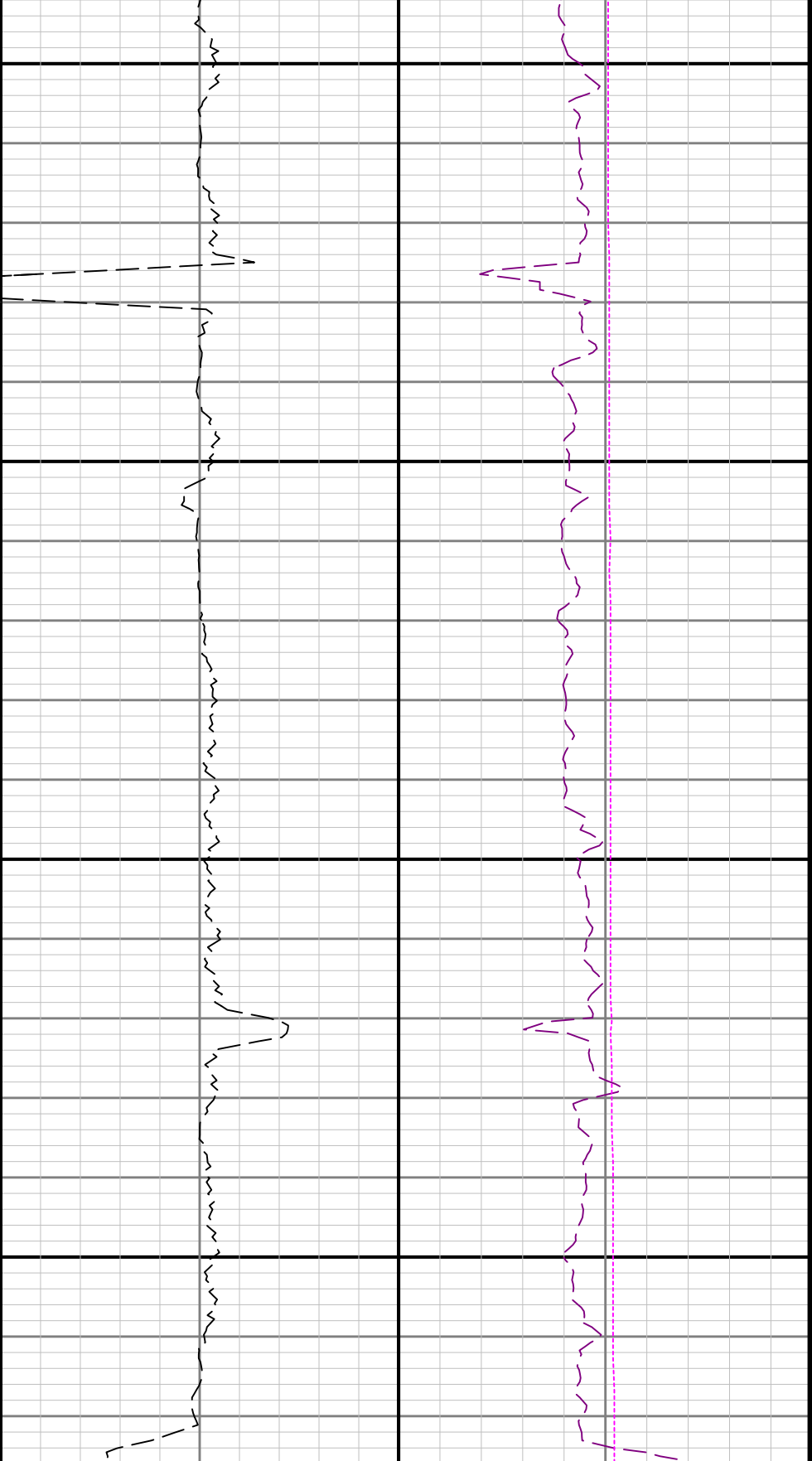
4300





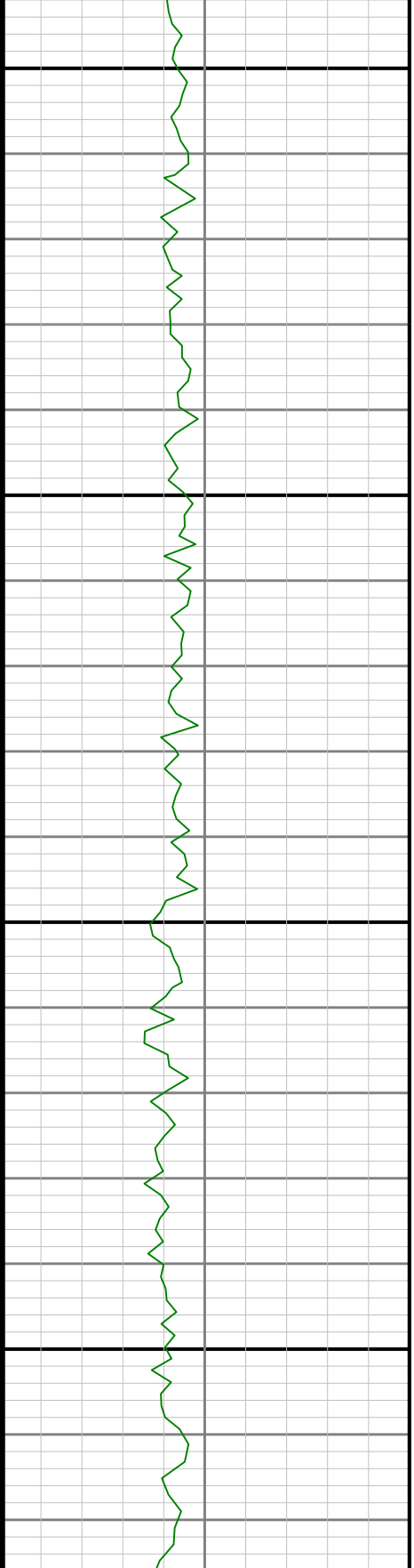
4400





4500

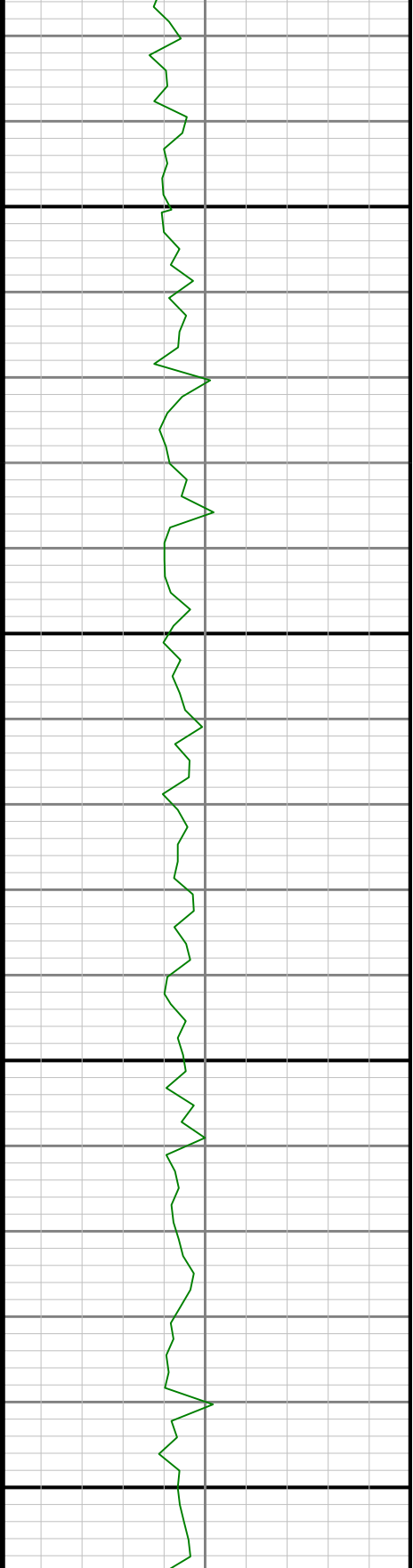
4600





4700

4800

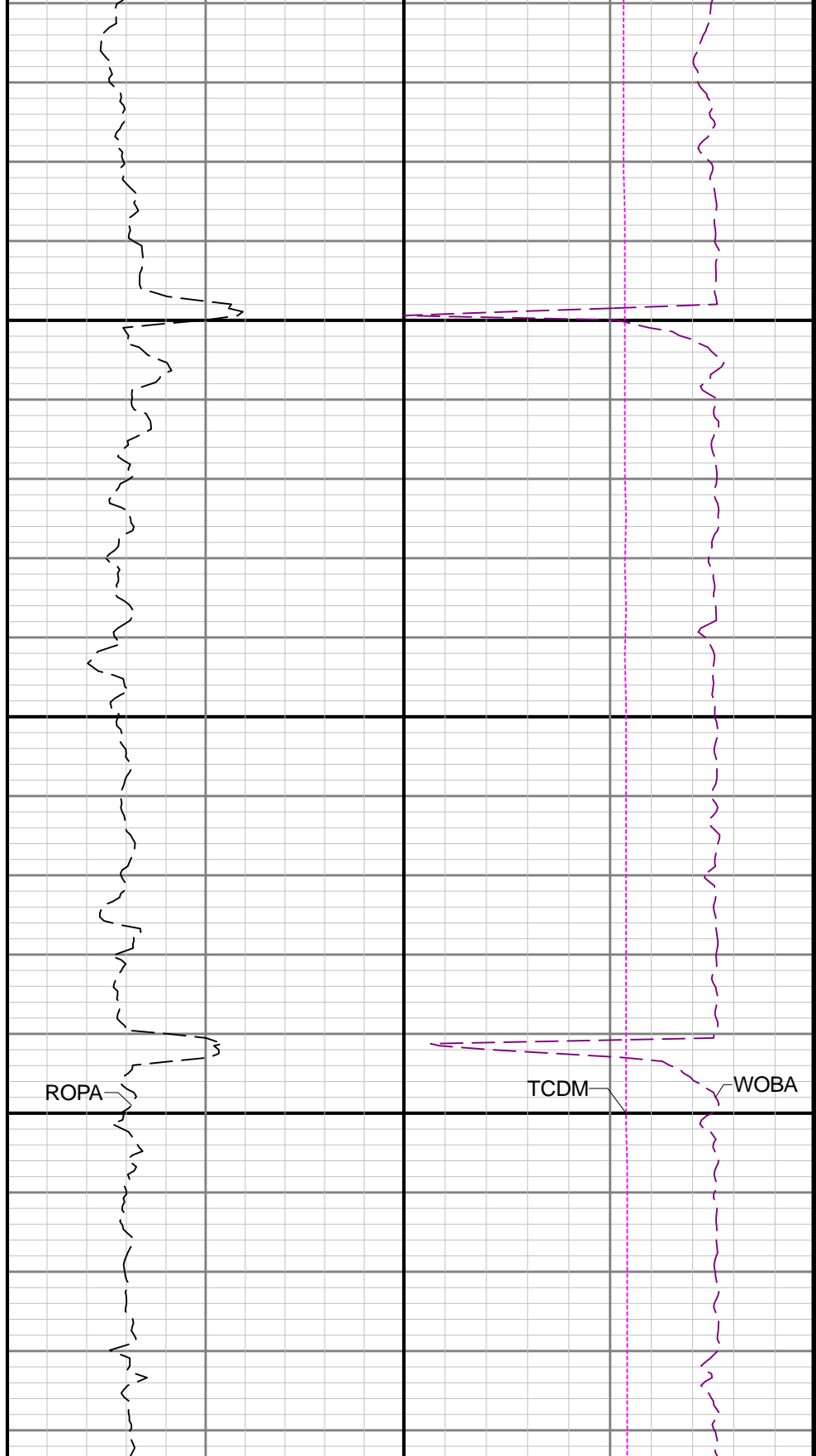




GRAM

4900

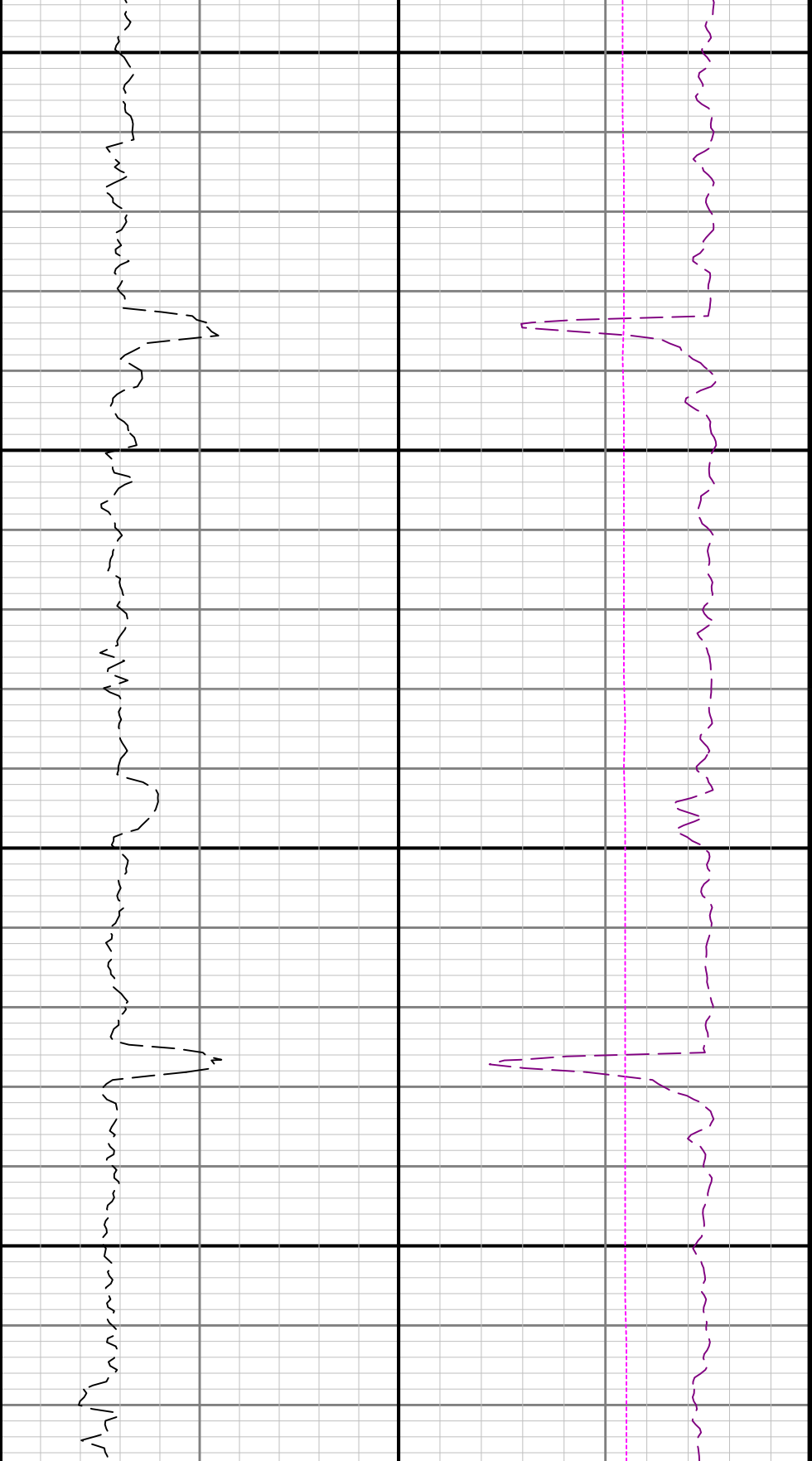
5000



ROPA

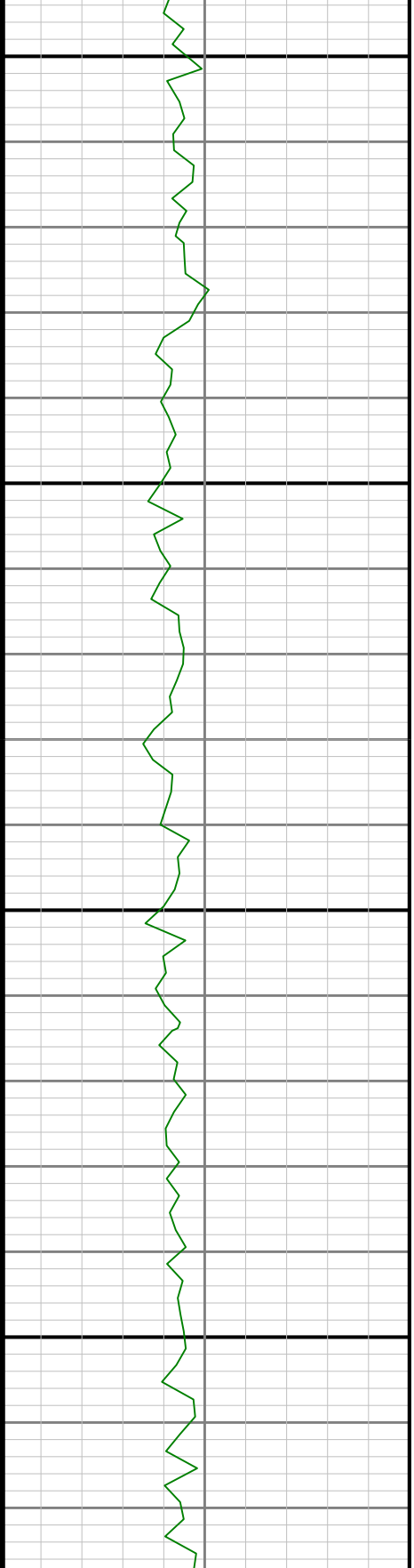
TCDM

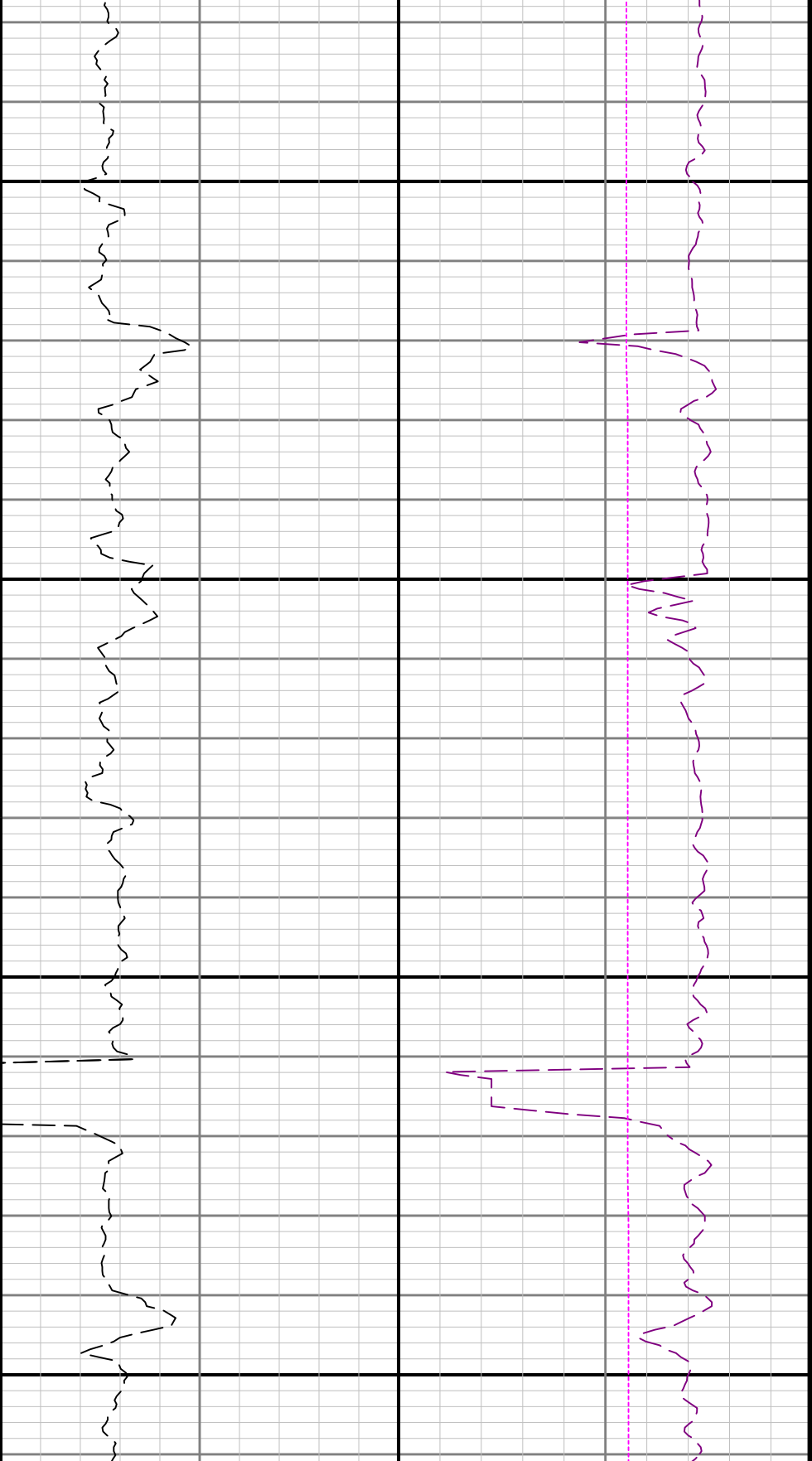
WOBA



5100

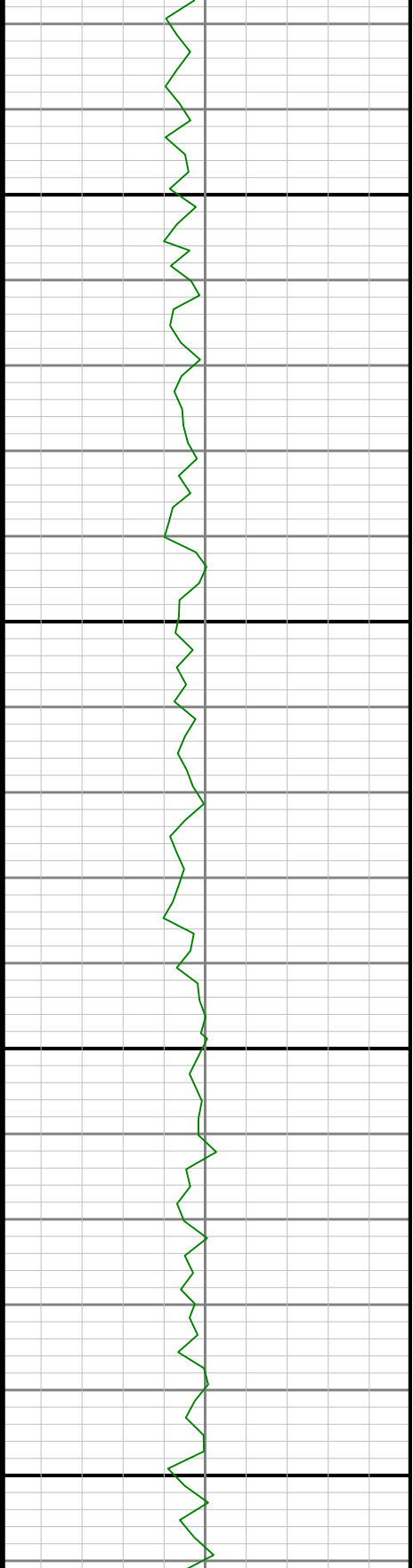
5200

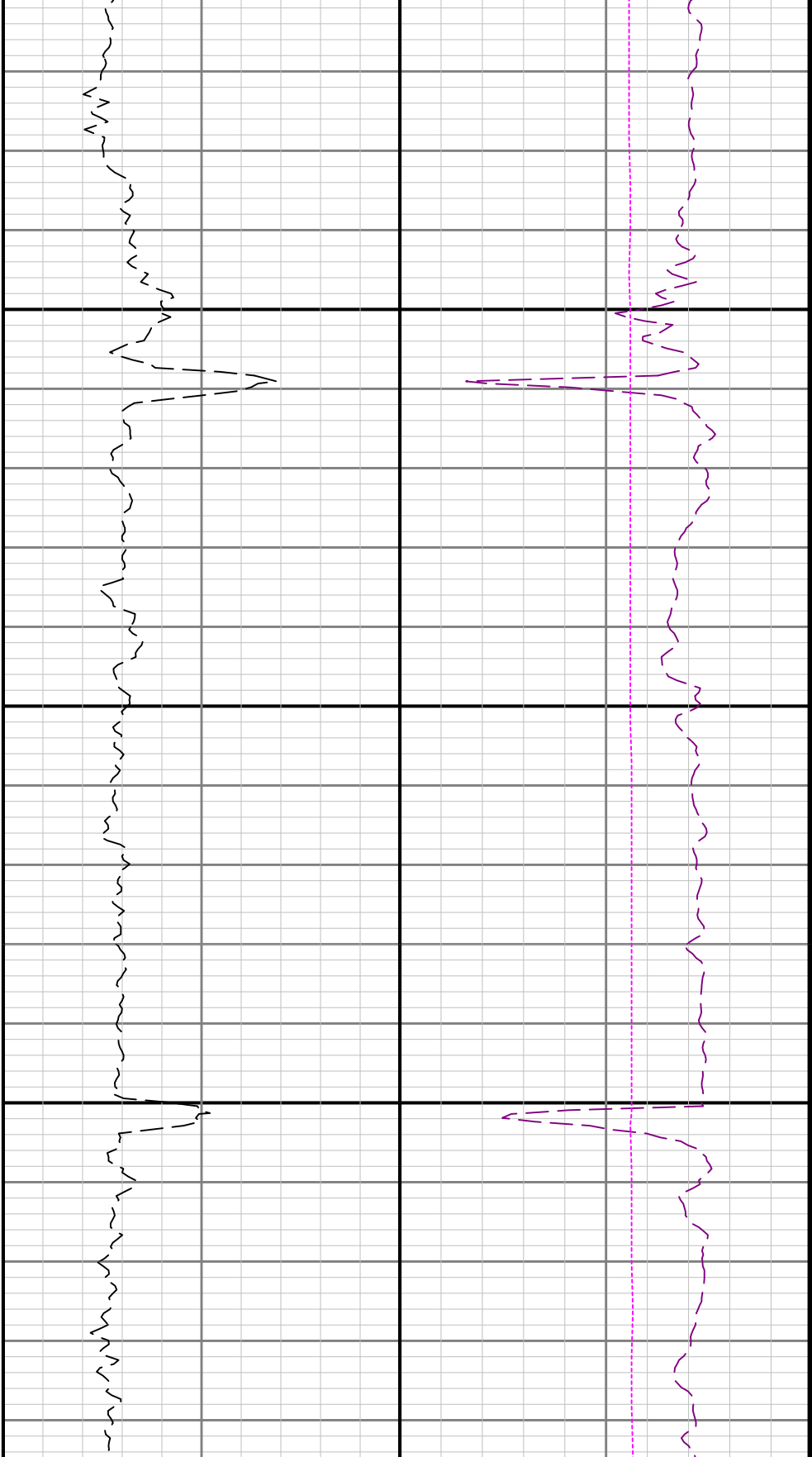




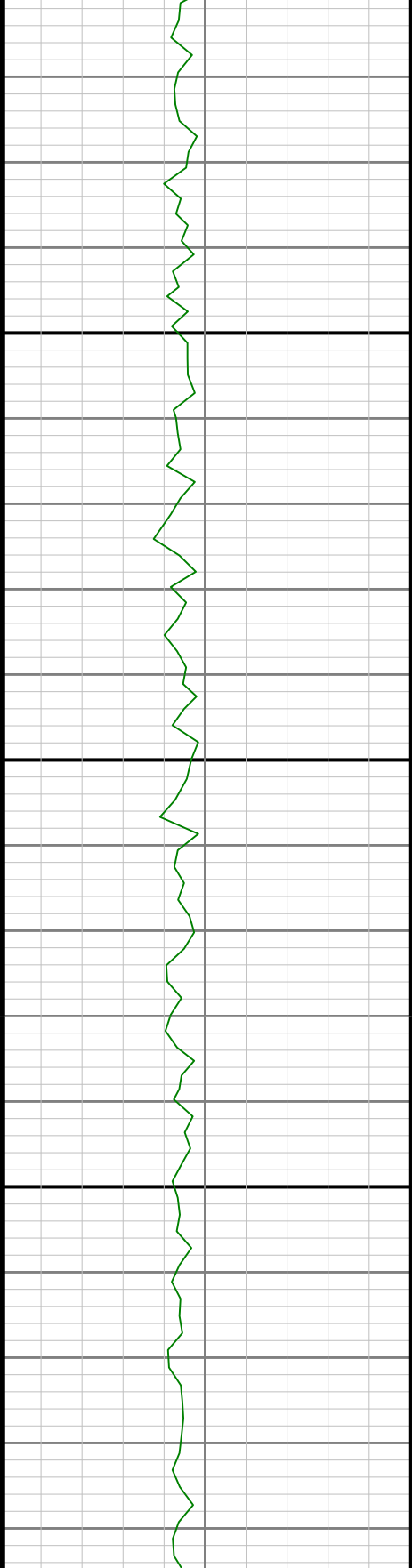
5300

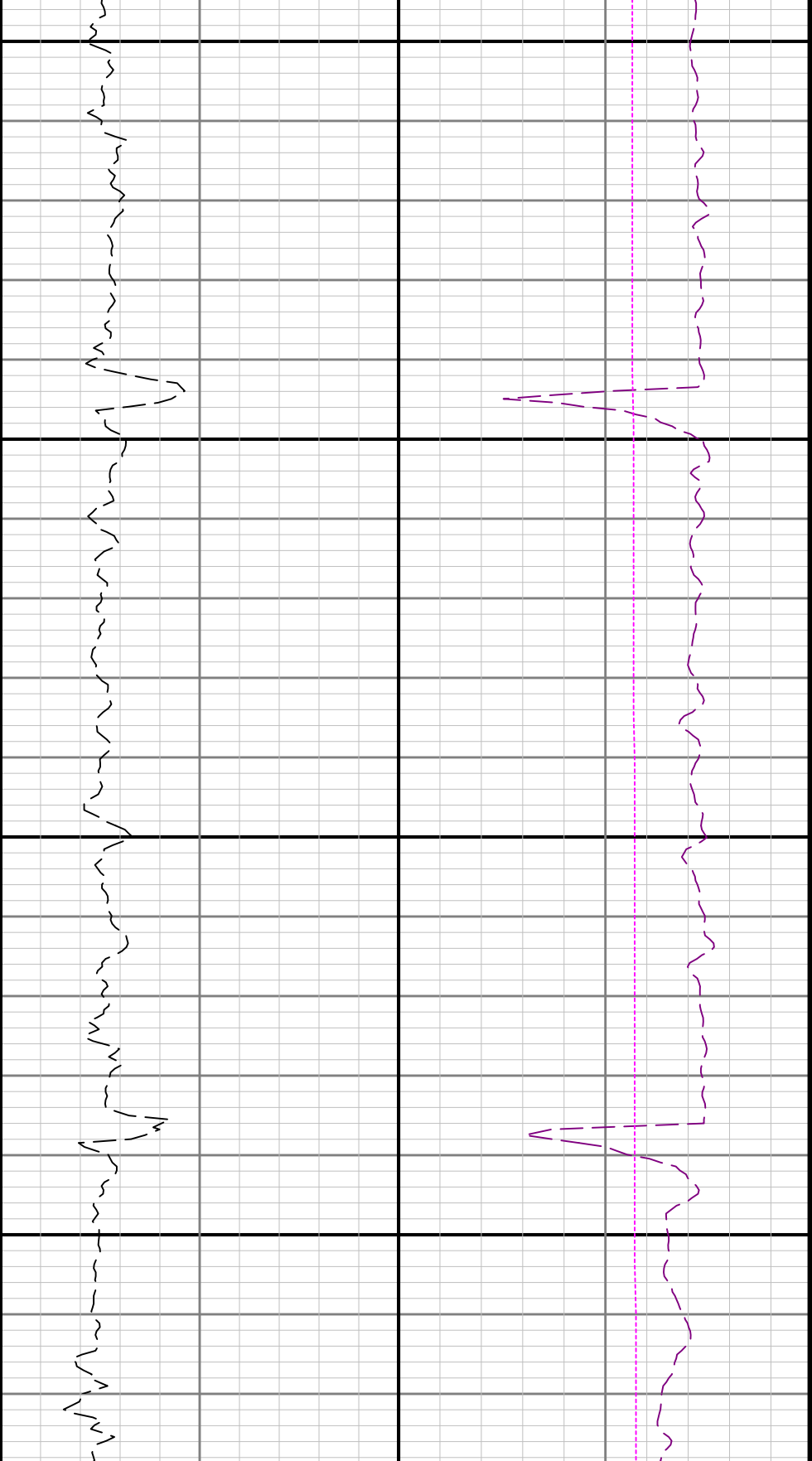
5400





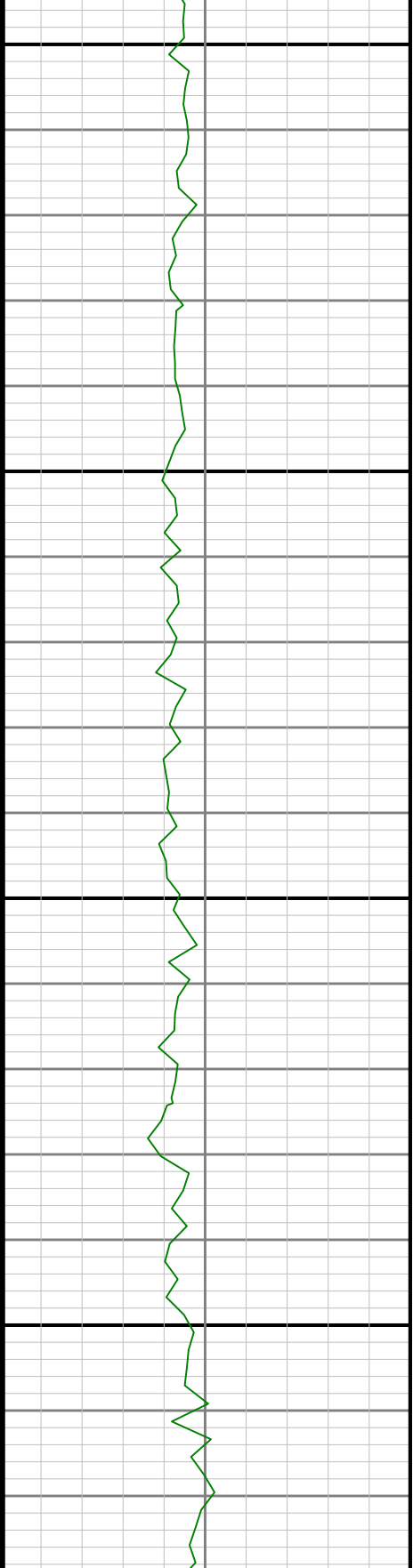
5500

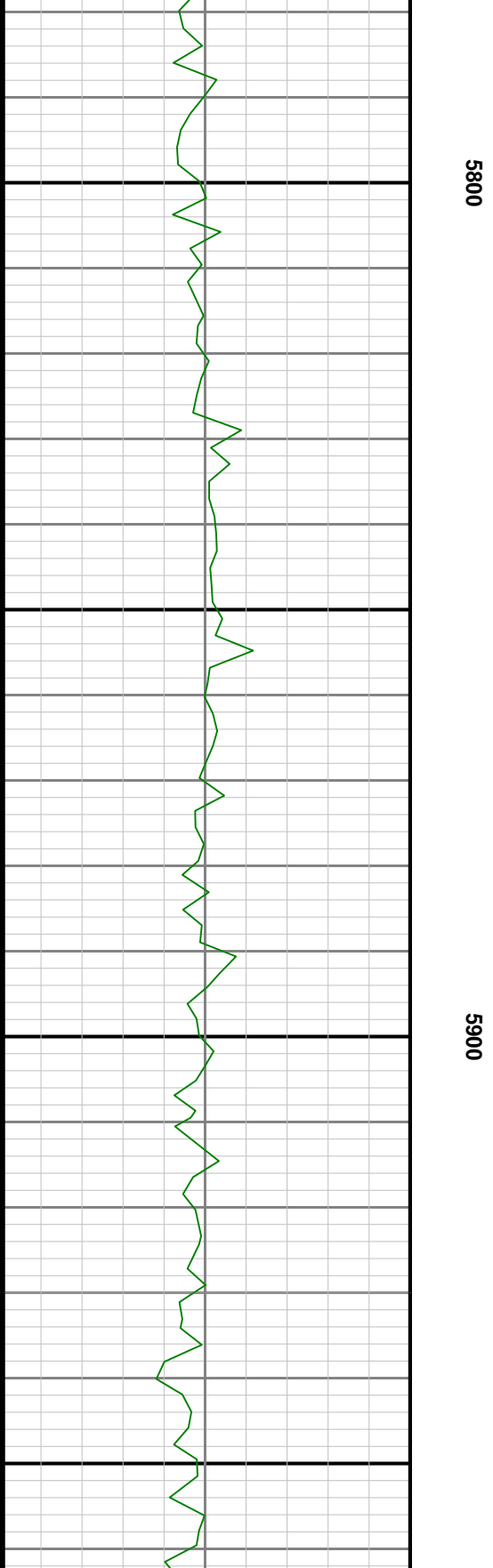
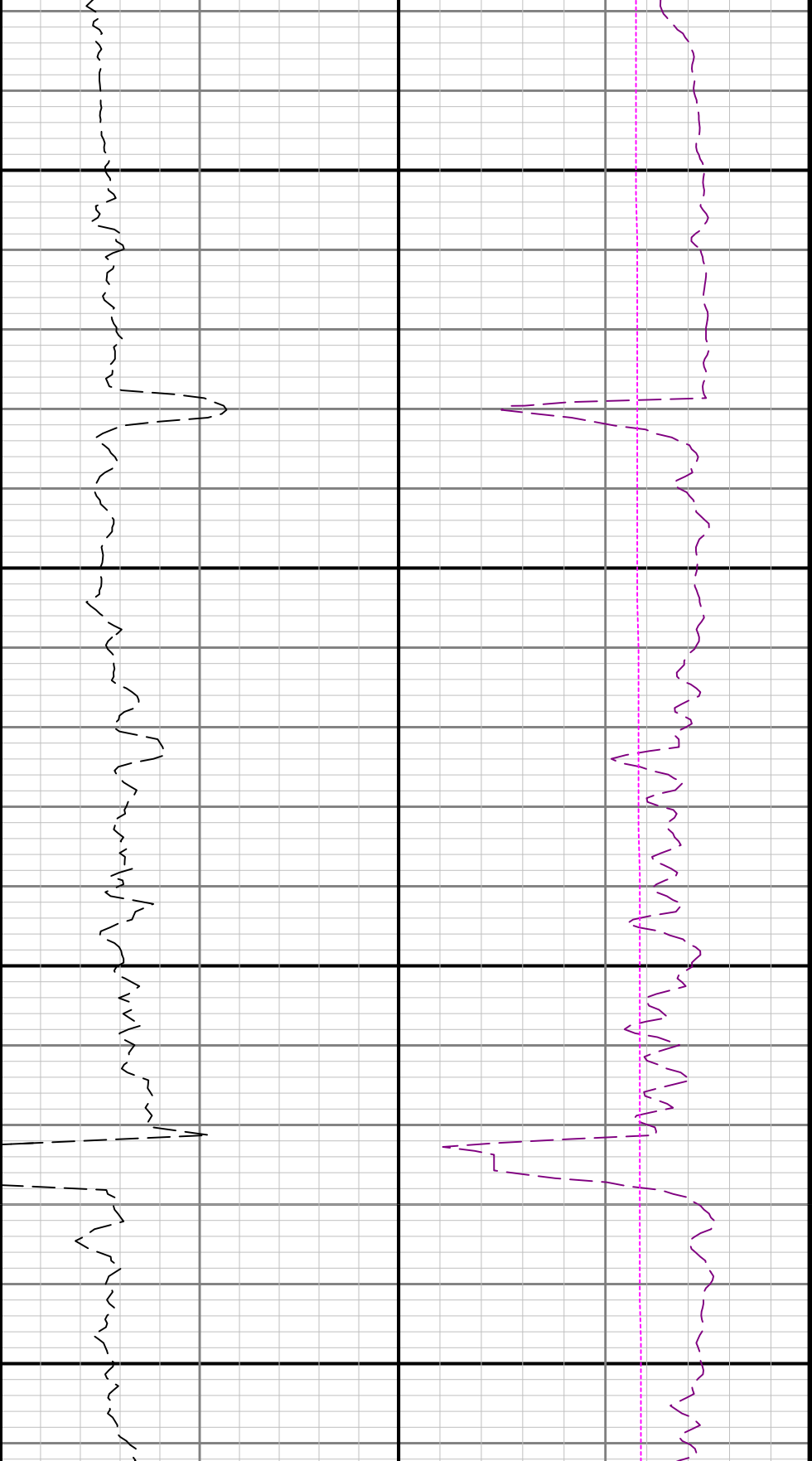


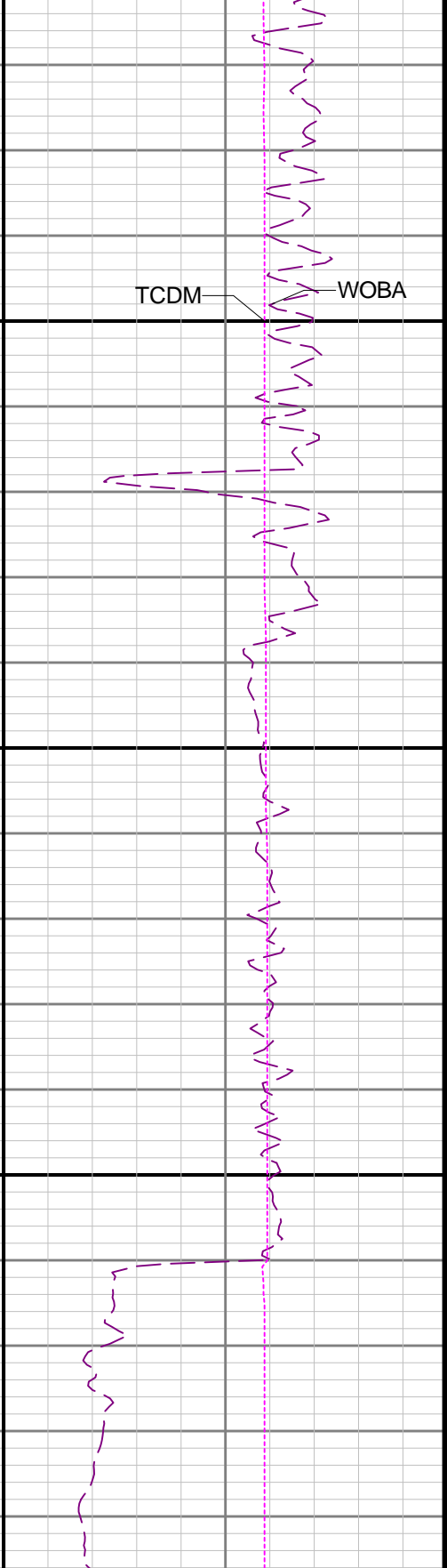
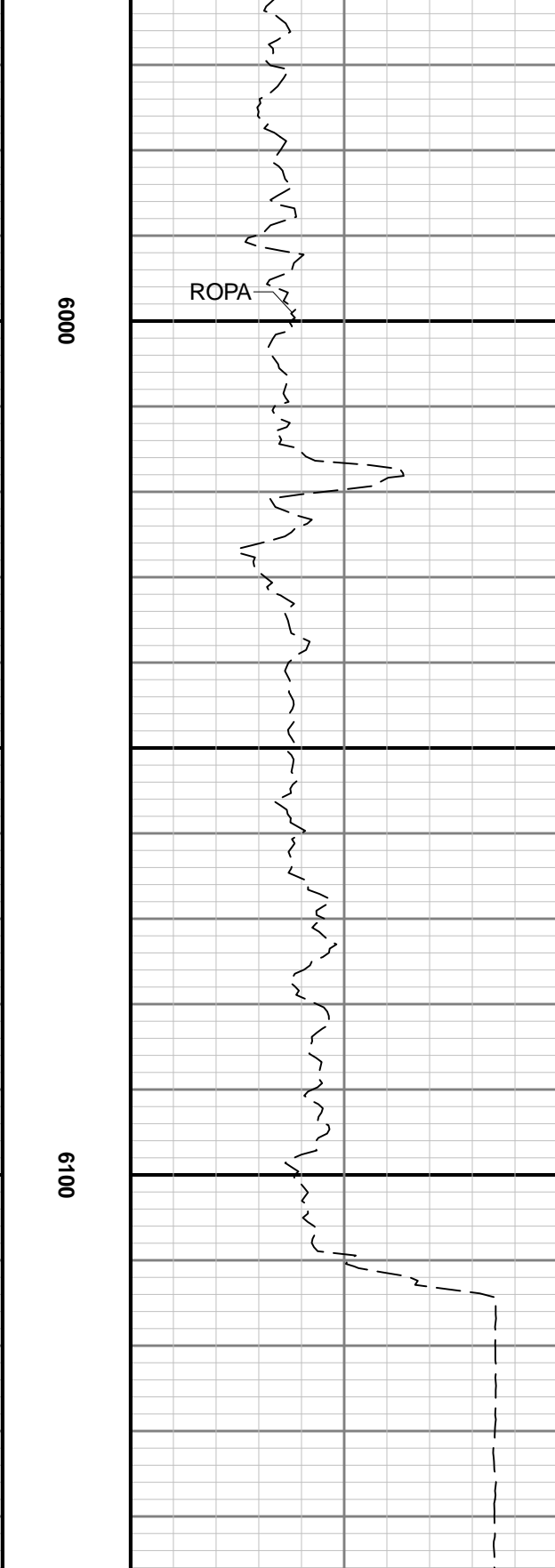
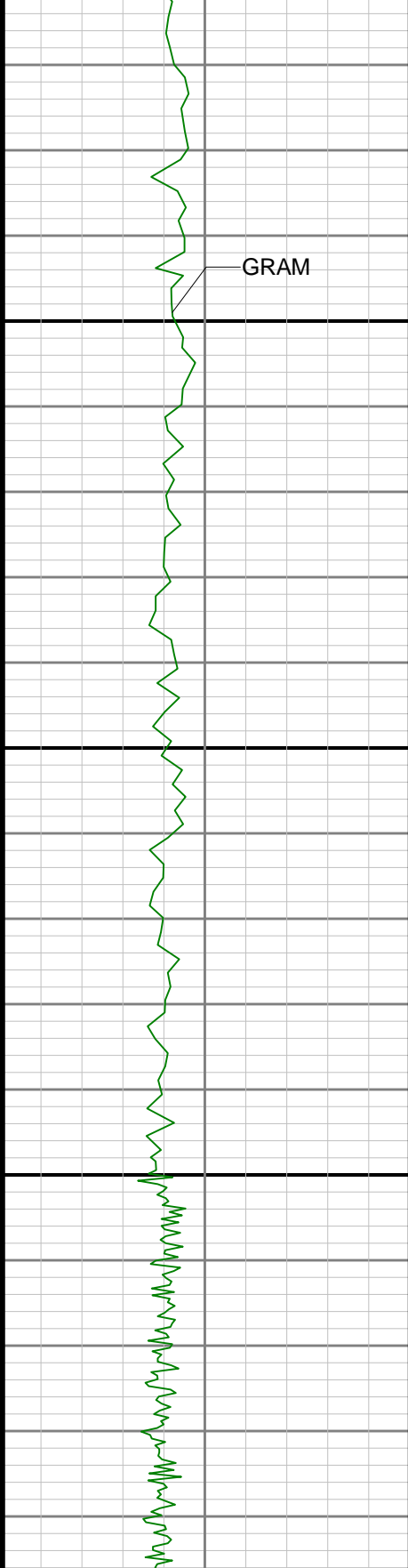


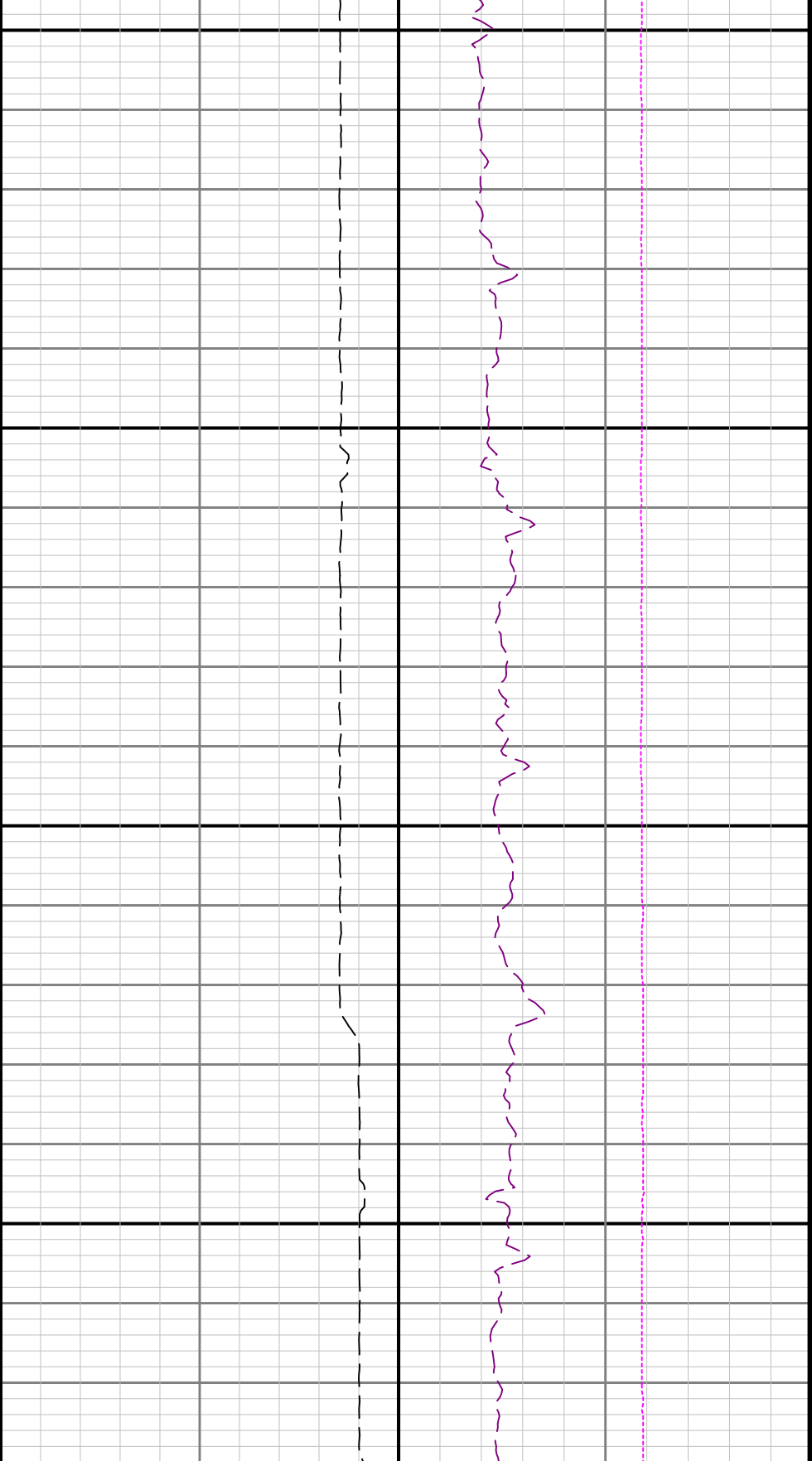
5600

5700



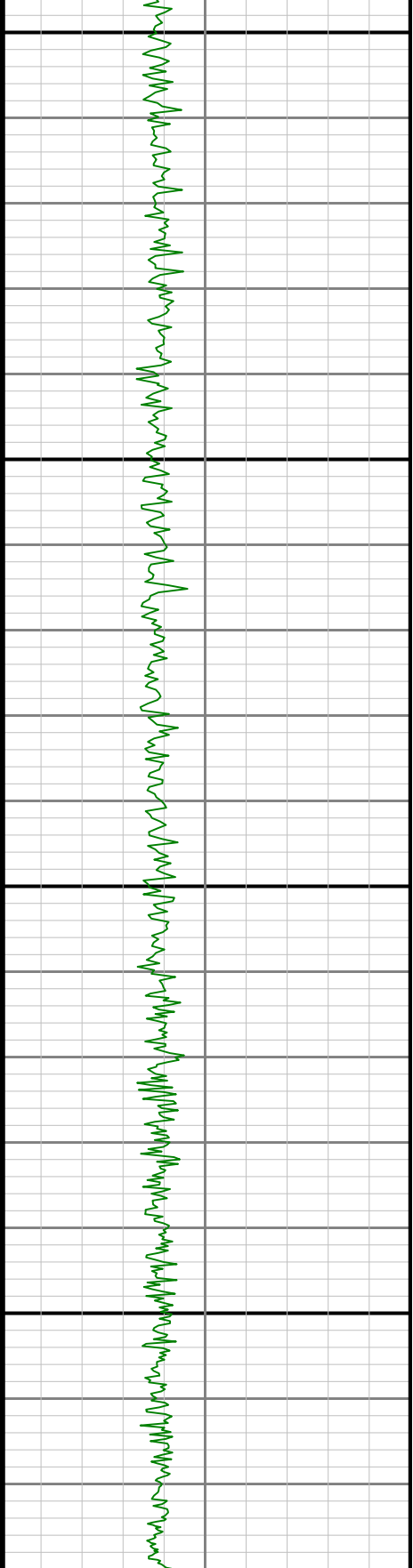


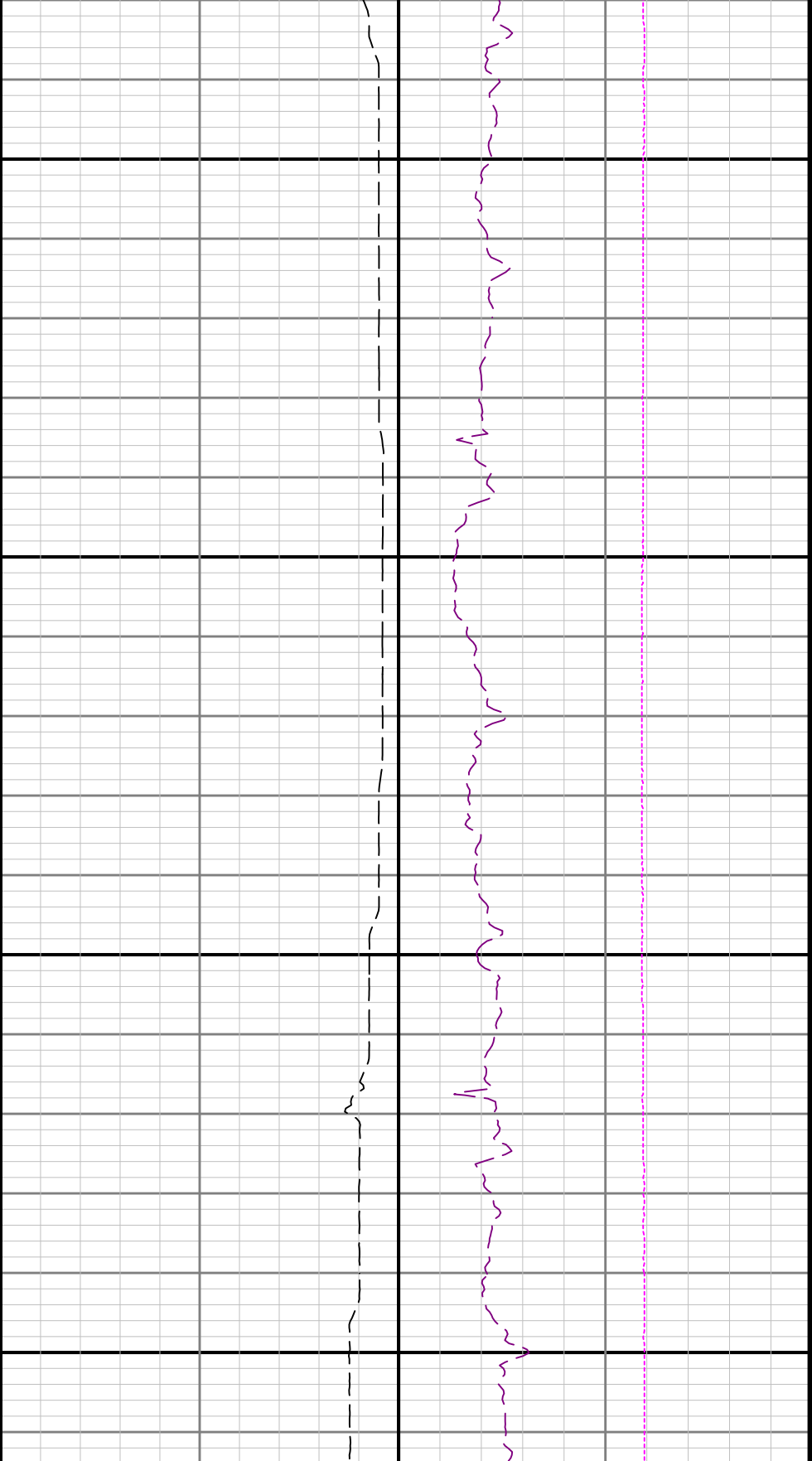




6200

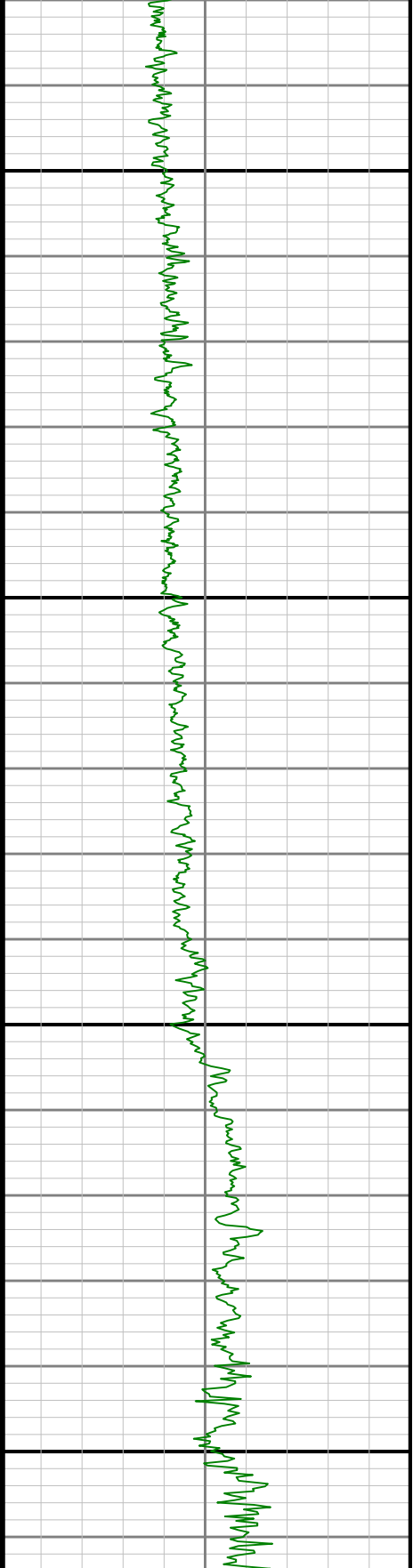
6300

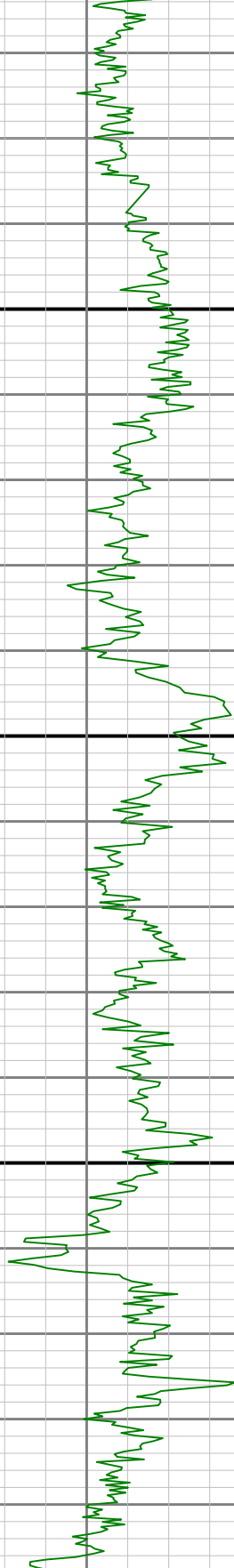




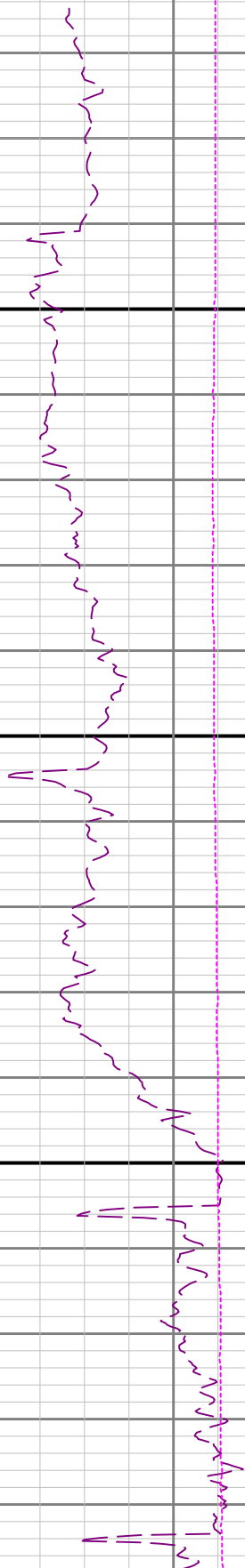
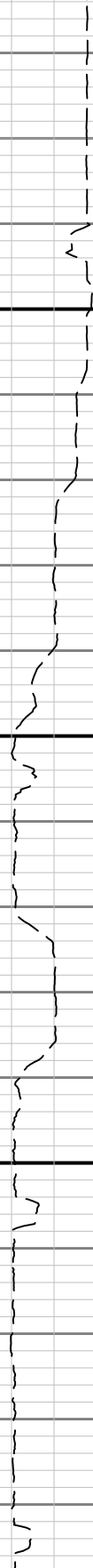
6400

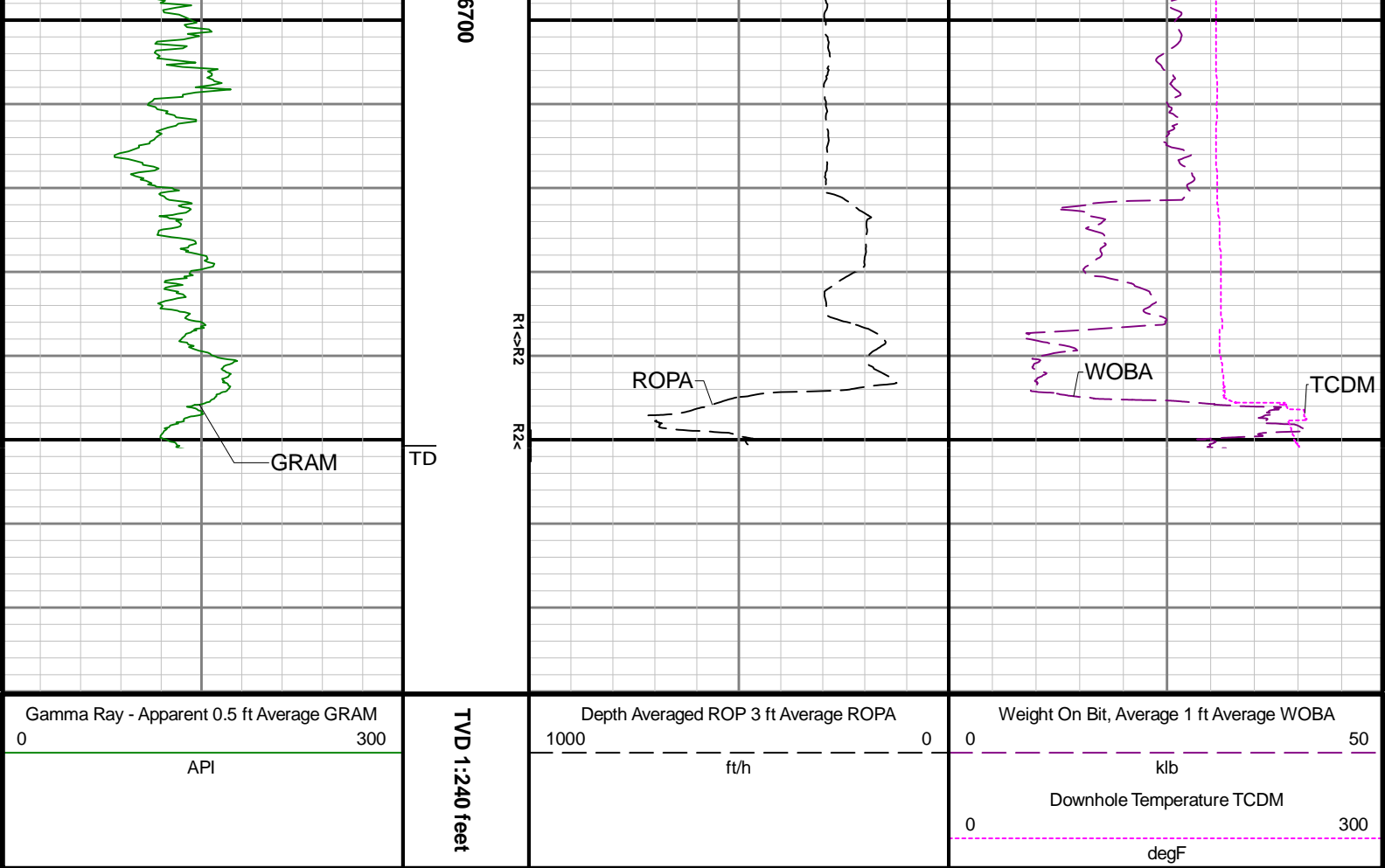
6500





0099





Directional Survey Summary

Latitude:	40° 15' 46.883" N	Longitude:	104° 33' 35.456" W
North Reference:	Grid	Drill Depth Zero:	Rig Floor
Vertical Datum is:	Mean Sea Level	Vertical Datum to DDZ: (ft)	4754.00
Vertical Section North: (ft)	0.00	Vertical Section East: (ft)	0.00
Vertical Section Azimuth: (deg)	175.63		
Grid Convergence: (deg)	-0.60	Magnetic Declination: (deg)	7.93
Total Correction: (deg)	7.33	TVD Calculation Method:	Minimum Curvature
Magnetic Correction:	Off	Local Magnetic Field: (nT)	51871
Local Magnetic Dip Angle: (deg)	66.61	Local Gravity Field: (m/s2)	9.800

Tie-In / Projection	Measured Depth (ft)	Inclination (deg)	Azimuth (deg)	Temperature (degF)	North (ft)	East (ft)	True Vertical Depth (ft)	TVD Subsea (ft)	Vertical Section (ft)	Course Length (ft)	Dog Leg Severity (deg/100ft)	Build Rate (deg/100ft)	Turn Rate (deg/100ft)
Tie-In	0.00	0.00	271.68	N/A	0.00	0.00	0.00	-4754.00	0.00	0.00	0.00	0.00	0.00
	84.00	0.37	271.68	N/A	0.01	-0.27	84.00	-4670.00	-0.03	84.00	0.44	0.44	0.00
	177.00	0.13	253.09	N/A	-0.01	-0.67	177.00	-4577.00	-0.04	93.00	0.27	-0.26	-19.99
	267.00	0.30	232.39	N/A	-0.19	-0.96	267.00	-4487.00	0.11	90.00	0.20	0.19	-23.00
	362.00	0.43	297.87	N/A	-0.17	-1.47	362.00	-4392.00	0.06	95.00	0.43	0.14	68.93
	457.00	0.06	43.82	N/A	0.03	-1.75	457.00	-4297.00	-0.16	95.00	0.47	-0.39	111.53
	551.00	0.63	16.72	N/A	0.56	-1.57	550.99	-4203.01	-0.68	94.00	0.61	0.61	-28.83
	646.00	0.28	351.25	N/A	1.29	-1.45	645.99	-4108.01	-1.40	95.00	0.42	-0.37	-26.81
	741.00	0.28	223.27	N/A	1.35	-1.65	740.99	-4013.01	-1.47	95.00	0.53	0.00	-134.72
	835.00	0.63	209.58	N/A	0.73	-2.06	834.99	-3919.01	-0.89	94.00	0.39	0.37	-14.56
	930.00	0.60	239.72	N/A	0.03	-2.75	929.98	-3824.02	-0.24	95.00	0.34	-0.03	31.73
	1024.00	0.57	203.15	N/A	-0.65	-3.35	1023.98	-3730.02	0.39	94.00	0.39	-0.03	-38.90

	1119.00	0.77	233.09	N/A	-1.47	-4.05	1118.97	-3635.03	1.15	95.00	0.42	0.21	31.52
	1213.00	0.72	242.53	N/A	-2.12	-5.08	1212.96	-3541.04	1.73	94.00	0.14	-0.05	10.04
	1308.00	0.80	249.77	N/A	-2.62	-6.23	1307.95	-3446.05	2.14	95.00	0.13	0.08	7.62
	1402.00	0.57	264.70	N/A	-2.89	-7.31	1401.95	-3352.05	2.33	94.00	0.31	-0.24	15.88
	1497.00	0.35	224.84	N/A	-3.14	-7.99	1496.94	-3257.06	2.53	95.00	0.40	-0.23	-41.96
	1591.00	0.56	312.73	N/A	-3.03	-8.53	1590.94	-3163.06	2.38	94.00	0.69	0.22	93.50
	1686.00	0.32	340.83	N/A	-2.47	-8.96	1685.94	-3068.06	1.78	95.00	0.33	-0.25	29.58
	1780.00	0.84	263.09	N/A	-2.30	-9.73	1779.94	-2974.06	1.56	94.00	0.89	0.55	-82.70
	1875.00	1.81	233.02	N/A	-3.29	-11.62	1874.91	-2879.09	2.40	95.00	1.22	1.02	-31.65
Tie-In	1925.00	1.60	246.14	N/A	-4.05	-12.89	1924.89	-2829.11	3.05	50.00	0.88	-0.42	26.24
	1982.00	0.70	265.88	112.2	-4.39	-13.96	1981.88	-2772.12	3.32	57.00	1.70	-1.58	34.63
	2077.00	0.14	39.30	114.9	-4.35	-14.47	2076.87	-2677.13	3.23	95.00	0.84	-0.59	140.44
	2171.00	0.07	100.18	117.6	-4.27	-14.34	2170.87	-2583.13	3.16	94.00	0.13	-0.07	64.77
	2268.00	2.15	95.39	341.9	-4.45	-12.47	2267.85	-2486.15	3.49	97.00	2.14	2.14	-4.94
	2361.00	4.13	89.02	123.0	-4.56	-7.38	2360.71	-2393.29	3.98	93.00	2.16	2.13	-6.85
	2456.00	5.73	91.90	125.7	-4.65	0.78	2455.35	-2298.65	4.70	95.00	1.70	1.68	3.03
	2551.00	7.12	91.91	125.7	-5.01	11.40	2549.75	-2204.25	5.86	95.00	1.46	1.46	0.01
	2645.00	10.77	92.10	128.4	-5.52	26.01	2642.59	-2111.41	7.49	94.00	3.88	3.88	0.20
	2740.00	10.62	91.70	128.4	-6.11	43.63	2735.94	-2018.06	9.42	95.00	0.18	-0.16	-0.42
	2834.00	10.41	93.12	131.1	-6.83	60.77	2828.37	-1925.63	11.44	94.00	0.35	-0.22	1.51
	2929.00	10.37	91.52	131.1	-7.52	77.88	2921.81	-1832.19	13.44	95.00	0.31	-0.04	-1.68
	3024.00	9.81	91.32	133.8	-7.94	94.52	3015.34	-1738.66	15.12	95.00	0.59	-0.59	-0.21
	3118.00	10.12	91.87	133.8	-8.39	110.78	3107.92	-1646.08	16.81	94.00	0.34	0.33	0.59
	3213.00	10.19	92.74	136.5	-9.06	127.52	3201.43	-1552.57	18.75	95.00	0.18	0.07	0.92
	3308.00	10.36	91.97	136.5	-9.76	144.45	3294.91	-1459.09	20.74	95.00	0.23	0.18	-0.81
	3402.00	10.36	92.26	139.2	-10.38	161.34	3387.38	-1366.62	22.65	94.00	0.06	0.00	0.31
	3497.00	10.26	91.92	139.2	-11.00	178.33	3480.84	-1273.16	24.56	95.00	0.12	-0.11	-0.36
	3592.00	10.46	92.49	139.2	-11.66	195.40	3574.29	-1179.71	26.52	95.00	0.24	0.21	0.60
	3687.00	10.46	91.24	141.9	-12.22	212.64	3667.71	-1086.29	28.39	95.00	0.24	0.00	-1.32
	3781.00	10.43	92.24	141.9	-12.74	229.67	3760.16	-993.84	30.20	94.00	0.20	-0.03	1.06
	3875.00	10.46	92.37	144.6	-13.43	246.70	3852.60	-901.40	32.18	94.00	0.04	0.03	0.14
	3970.00	10.34	91.59	144.6	-14.02	263.84	3946.04	-807.96	34.08	95.00	0.19	-0.13	-0.82
	4064.00	10.31	92.76	147.3	-14.66	280.67	4038.52	-715.48	36.00	94.00	0.23	-0.03	1.24
	4159.00	10.50	91.24	147.3	-15.25	297.82	4131.95	-622.05	37.90	95.00	0.35	0.20	-1.60
	4254.00	10.18	91.98	150.0	-15.73	314.86	4225.41	-528.59	39.68	95.00	0.36	-0.34	0.78
	4348.00	10.29	92.20	150.0	-16.34	331.56	4317.92	-436.08	41.56	94.00	0.12	0.12	0.23
	4443.00	10.47	91.90	150.0	-16.95	348.66	4411.36	-342.64	43.47	95.00	0.20	0.19	-0.32
	4538.00	10.29	91.52	152.7	-17.46	365.77	4504.81	-249.19	45.28	95.00	0.20	-0.19	-0.40
	4633.00	10.32	92.21	152.7	-18.02	382.76	4598.27	-155.73	47.13	95.00	0.13	0.03	0.73
	4727.00	10.11	93.71	155.4	-18.88	399.40	4690.78	-63.22	49.25	94.00	0.36	-0.22	1.60
	4822.00	10.07	93.24	158.1	-19.88	416.01	4784.31	30.31	51.53	95.00	0.10	-0.04	-0.49
	4917.00	10.32	93.96	160.8	-20.94	432.80	4877.82	123.82	53.86	95.00	0.30	0.26	0.76
	5011.00	10.09	91.70	160.8	-21.77	449.43	4970.33	216.33	55.95	94.00	0.49	-0.24	-2.40
	5106.00	9.82	92.87	163.5	-22.42	465.84	5063.90	309.90	57.85	95.00	0.36	-0.28	1.23
	5200.00	10.02	92.47	163.5	-23.17	482.01	5156.49	402.49	59.83	94.00	0.23	0.21	-0.43
	5295.00	10.08	92.54	166.2	-23.90	498.57	5250.03	496.03	61.82	95.00	0.06	0.06	0.07
	5389.00	9.86	93.49	166.2	-24.75	514.83	5342.62	588.62	63.91	94.00	0.29	-0.23	1.01
	5484.00	10.01	94.69	166.2	-25.92	531.17	5436.19	682.19	66.32	95.00	0.27	0.16	1.26
	5578.00	10.04	92.19	168.9	-26.90	547.50	5528.76	774.76	68.54	94.00	0.46	0.03	-2.66
	5673.00	10.12	92.47	168.9	-27.58	564.12	5622.29	868.29	70.48	95.00	0.10	0.08	0.29
	5768.00	10.08	92.09	147.3	-28.24	580.76	5715.82	961.82	72.41	95.00	0.08	-0.04	-0.40
	5862.00	9.65	101.86	174.3	-30.16	596.70	5808.43	1054.43	75.54	94.00	1.84	-0.46	10.39
	5957.00	9.82	92.69	174.3	-32.18	612.58	5902.07	1148.07	78.76	95.00	1.64	0.18	-9.65
	6051.00	9.87	92.47	177.0	-32.90	628.64	5994.69	1240.69	80.71	94.00	0.07	0.05	-0.23
	6146.00	9.97	92.32	179.7	-33.59	644.99	6088.27	1334.27	82.64	95.00	0.11	0.11	-0.16
	6241.00	10.95	117.57	177.0	-38.10	661.21	6181.74	1427.74	88.37	95.00	4.89	1.03	26.58
	6335.00	13.74	155.05	177.0	-52.38	673.86	6273.70	1519.70	103.57	94.00	8.84	2.97	39.87
	6430.00	21.41	162.97	177.0	-79.23	683.71	6364.21	1610.21	131.10	95.00	8.44	8.07	8.34
	6524.00	31.42	164.80	177.0	-119.38	695.19	6448.29	1694.29	172.00	94.00	10.68	10.65	1.95
	6619.00	41.39	163.61	179.7	-173.54	710.58	6524.65	1770.65	227.18	95.00	10.52	10.49	-1.25
	6714.00	51.06	163.59	177.0	-239.27	729.93	6590.30	1836.30	294.19	95.00	10.18	10.18	-0.02

		6809.00	58.96	167.96	179.7	-314.66	748.89	6644.75	1890.75	370.81	95.00	9.13	8.32	4.60
		6903.00	68.87	170.79	179.7	-397.54	764.35	6686.04	1932.04	454.62	94.00	10.88	10.54	3.01
		6998.00	74.00	171.24	185.2	-486.46	778.40	6716.27	1962.27	544.36	95.00	5.42	5.40	0.47
		7092.00	80.88	171.34	185.2	-577.10	792.29	6736.70	1982.70	635.79	94.00	7.32	7.32	0.11
		7187.00	89.41	174.23	190.6	-670.91	804.15	6744.74	1990.74	730.24	95.00	9.48	8.98	3.04
		7282.00	89.78	176.46	196.0	-765.59	811.86	6745.41	1991.41	825.23	95.00	2.38	0.39	2.35
		7377.00	90.00	178.66	198.7	-860.50	815.90	6745.59	1991.59	920.17	95.00	2.33	0.23	2.32
		7471.00	90.18	179.38	201.4	-954.48	817.51	6745.44	1991.44	1014.00	94.00	0.79	0.19	0.77
		7566.00	90.15	179.11	204.1	-1049.47	818.76	6745.17	1991.17	1108.81	95.00	0.29	-0.03	-0.28
		7660.00	89.88	179.00	206.8	-1143.46	820.31	6745.14	1991.14	1202.64	94.00	0.31	-0.29	-0.12
		7755.00	90.28	178.06	209.5	-1238.43	822.75	6745.01	1991.01	1297.52	95.00	1.08	0.42	-0.99
		7850.00	90.03	177.97	212.2	-1333.37	826.04	6744.75	1990.75	1392.44	95.00	0.28	-0.26	-0.09
		7944.00	90.06	177.88	212.2	-1427.31	829.44	6744.68	1990.68	1486.36	94.00	0.10	0.03	-0.10
		8039.00	90.03	178.28	214.9	-1522.26	832.63	6744.61	1990.61	1581.27	95.00	0.42	-0.03	0.42
		8133.00	90.68	178.54	214.9	-1616.22	835.24	6744.02	1990.02	1675.16	94.00	0.74	0.69	0.28
		8228.00	90.18	178.22	217.6	-1711.18	837.92	6743.31	1989.31	1770.05	95.00	0.62	-0.53	-0.34
		8323.00	90.49	178.25	220.3	-1806.13	840.85	6742.76	1988.76	1864.95	95.00	0.33	0.33	0.03
		8417.00	89.78	180.14	220.3	-1900.12	842.17	6742.53	1988.53	1958.76	94.00	2.15	-0.76	2.01
		8512.00	89.69	179.71	220.3	-1995.11	842.29	6742.97	1988.97	2053.49	95.00	0.46	-0.09	-0.45
		8607.00	89.78	180.25	223.0	-2090.11	842.33	6743.41	1989.41	2148.22	95.00	0.58	0.09	0.57
		8701.00	90.18	180.47	223.0	-2184.11	841.73	6743.45	1989.45	2241.90	94.00	0.49	0.43	0.23
		8795.00	90.00	180.32	225.7	-2278.11	841.09	6743.30	1989.30	2335.57	94.00	0.25	-0.19	-0.16
		8890.00	89.35	179.20	228.4	-2373.10	841.48	6743.84	1989.84	2430.32	95.00	1.36	-0.68	-1.18
		8984.00	89.48	179.97	228.4	-2467.10	842.17	6744.80	1990.80	2524.09	94.00	0.83	0.14	0.82
		9079.00	89.69	180.21	231.1	-2562.09	842.02	6745.48	1991.48	2618.80	95.00	0.34	0.22	0.25
		9174.00	89.94	180.36	231.1	-2657.09	841.54	6745.79	1991.79	2713.49	95.00	0.31	0.26	0.16
		9269.00	90.06	180.21	231.1	-2752.09	841.07	6745.79	1991.79	2808.18	95.00	0.20	0.13	-0.16
		9363.00	89.54	179.88	231.1	-2846.09	841.00	6746.12	1992.12	2901.90	94.00	0.66	-0.55	-0.35
		9458.00	90.15	179.96	233.8	-2941.09	841.13	6746.38	1992.38	2996.63	95.00	0.65	0.64	0.08
		9552.00	90.22	180.43	233.8	-3035.09	840.81	6746.07	1992.07	3090.33	94.00	0.51	0.07	0.50
		9647.00	89.72	180.23	233.8	-3130.09	840.26	6746.12	1992.12	3185.01	95.00	0.57	-0.53	-0.21
		9741.00	90.12	179.79	236.5	-3224.08	840.25	6746.25	1992.25	3278.74	94.00	0.63	0.43	-0.47
		9836.00	90.58	180.14	239.2	-3319.08	840.30	6745.67	1991.67	3373.46	95.00	0.61	0.48	0.37
		9931.00	89.88	180.31	239.2	-3414.08	839.93	6745.29	1991.29	3468.16	95.00	0.76	-0.74	0.18
		10025.00	90.12	180.48	239.2	-3508.08	839.28	6745.29	1991.29	3561.83	94.00	0.31	0.26	0.18
		10120.00	89.94	180.68	241.9	-3603.07	838.32	6745.24	1991.24	3656.48	95.00	0.28	-0.19	0.21
		10214.00	89.78	179.97	241.9	-3697.07	837.79	6745.47	1991.47	3750.16	94.00	0.77	-0.17	-0.76
		10309.00	89.51	179.91	244.6	-3792.07	837.89	6746.06	1992.06	3844.89	95.00	0.29	-0.28	-0.06
		10404.00	89.63	180.20	244.6	-3887.07	837.80	6746.77	1992.77	3939.60	95.00	0.33	0.13	0.31
		10498.00	89.60	179.02	244.6	-3981.06	838.44	6747.41	1993.41	4033.37	94.00	1.26	-0.03	-1.26
		10593.00	90.12	180.66	236.5	-4076.06	838.70	6747.64	1993.64	4128.11	95.00	1.81	0.55	1.73
		10688.00	90.15	180.04	231.1	-4171.05	838.12	6747.41	1993.41	4222.79	95.00	0.65	0.03	-0.65
		10782.00	88.06	180.75	233.8	-4265.03	837.47	6748.88	1994.88	4316.45	94.00	2.35	-2.22	0.76
		10877.00	90.03	179.73	239.2	-4360.01	837.08	6750.46	1996.46	4411.12	95.00	2.34	2.07	-1.07
		10971.00	89.20	179.53	241.9	-4454.01	837.68	6751.10	1997.10	4504.89	94.00	0.91	-0.88	-0.21
		11066.00	90.55	179.80	247.3	-4549.00	838.24	6751.30	1997.30	4599.65	95.00	1.45	1.42	0.28
		11160.00	90.95	181.43	244.6	-4642.99	837.23	6750.07	1996.07	4693.28	94.00	1.79	0.43	1.73
		11255.00	89.85	180.36	244.6	-4737.97	835.75	6749.41	1995.41	4787.88	95.00	1.62	-1.16	-1.13
		11350.00	90.12	180.38	247.3	-4832.97	835.13	6749.43	1995.43	4882.55	95.00	0.28	0.28	0.02
		11444.00	90.68	180.08	250.0	-4926.97	834.76	6748.78	1994.78	4976.25	94.00	0.68	0.60	-0.32
		11539.00	90.59	180.45	250.0	-5021.96	834.32	6747.73	1993.73	5070.93	95.00	0.40	-0.09	0.39
		11634.00	90.22	180.34	250.0	-5116.95	833.66	6747.05	1993.05	5165.60	95.00	0.41	-0.39	-0.12
		11728.00	90.15	180.72	252.7	-5210.95	832.79	6746.75	1992.75	5259.26	94.00	0.41	-0.07	0.40
		11822.00	90.28	180.72	252.7	-5304.94	831.61	6746.40	1992.40	5352.88	94.00	0.14	0.14	0.00
		11917.00	90.00	180.18	252.7	-5399.94	830.86	6746.17	1992.17	5447.55	95.00	0.64	-0.29	-0.57
		12012.00	89.69	180.30	255.4	-5494.94	830.47	6746.42	1992.42	5542.24	95.00	0.35	-0.33	0.13
		12106.00	91.39	181.70	258.1	-5588.91	828.83	6745.54	1991.54	5635.82	94.00	2.34	1.81	1.49
		12201.00	89.51	181.43	255.4	-5683.87	826.23	6744.79	1990.79	5730.30	95.00	2.00	-1.98	-0.28
		12295.00	89.60	181.28	258.1	-5777.84	824.01	6745.52	1991.52	5823.83	94.00	0.19	0.10	-0.16
		12390.00	89.72	180.01	258.1	-5872.83	822.94	6746.08	1992.08	5918.46	95.00	1.34	0.13	-1.34
		12484.00	89.94	179.63	258.1	-5966.83	823.23	6746.36	1992.36	6012.21	94.00	0.47	0.23	-0.40

	12579.00	89.85	180.55	260.8	-6061.83	823.09	6746.54	1992.54	6106.92	95.00	0.97	-0.09	0.97
	12673.00	89.63	180.18	352.7	-6155.82	822.49	6746.96	1992.96	6200.60	94.00	0.46	-0.23	-0.39
	12768.00	90.03	181.48	263.5	-6250.81	821.11	6747.25	1993.25	6295.21	95.00	1.43	0.42	1.37
	12863.00	89.60	179.06	260.8	-6345.80	820.66	6747.55	1993.55	6389.89	95.00	2.59	-0.45	-2.55
	12958.00	90.31	179.34	260.8	-6440.79	821.99	6747.63	1993.63	6484.70	95.00	0.80	0.75	0.29
	13053.00	91.26	179.63	260.8	-6535.78	822.84	6746.33	1992.33	6579.48	95.00	1.05	1.00	0.31
	13147.00	90.06	179.31	263.5	-6629.77	823.71	6745.24	1991.24	6673.26	94.00	1.32	-1.28	-0.34
	13242.00	90.40	179.67	263.5	-6724.76	824.56	6744.86	1990.86	6768.04	95.00	0.52	0.36	0.38
	13336.00	90.99	179.34	263.5	-6818.75	825.37	6743.72	1989.72	6861.82	94.00	0.72	0.63	-0.35
	13431.00	90.83	179.74	266.2	-6913.74	826.13	6742.21	1988.21	6956.59	95.00	0.45	-0.17	0.42
	13526.00	90.52	180.37	266.2	-7008.73	826.04	6741.09	1987.09	7051.29	95.00	0.74	-0.33	0.66
	13620.00	90.25	180.04	266.2	-7102.73	825.71	6740.46	1986.46	7144.99	94.00	0.45	-0.29	-0.35
	13715.00	90.37	179.93	266.2	-7197.72	825.73	6739.95	1985.95	7239.72	95.00	0.17	0.13	-0.12
	13810.00	90.43	179.67	266.2	-7292.72	826.06	6739.28	1985.28	7334.46	95.00	0.28	0.06	-0.27
	13904.00	90.49	179.53	269.0	-7386.72	826.72	6738.53	1984.53	7428.23	94.00	0.16	0.06	-0.15
	14094.00	89.88	180.03	258.1	-7576.71	827.45	6737.92	1983.92	7617.73	190.00	0.42	-0.32	0.26
	14188.00	89.94	179.56	260.8	-7670.71	827.78	6738.06	1984.06	7711.49	94.00	0.50	0.06	-0.50
	14293.00	90.34	179.15	244.6	-7775.70	828.97	6737.81	1983.81	7816.26	105.00	0.55	0.38	-0.39
	14388.00	89.94	183.95	250.0	-7870.64	826.40	6737.58	1983.58	7910.73	95.00	5.07	-0.42	5.05
	14482.00	89.45	182.67	250.0	-7964.48	820.97	6738.08	1984.08	8003.88	94.00	1.46	-0.52	-1.36
	14577.00	90.65	181.57	252.7	-8059.41	817.46	6737.99	1983.99	8098.27	95.00	1.71	1.26	-1.16
	14671.00	89.66	178.31	252.7	-8153.40	817.55	6737.74	1983.74	8191.99	94.00	3.62	-1.05	-3.47
	14766.00	90.09	178.98	252.7	-8248.37	819.80	6737.95	1983.95	8286.86	95.00	0.84	0.45	0.71
	14860.00	90.15	180.31	255.4	-8342.37	820.38	6737.75	1983.75	8380.62	94.00	1.42	0.06	1.41
	14955.00	90.25	178.71	258.1	-8437.36	821.20	6737.42	1983.42	8475.40	95.00	1.69	0.11	-1.68
	15049.00	90.55	180.19	260.8	-8531.35	822.10	6736.76	1982.76	8569.19	94.00	1.61	0.32	1.57
	15144.00	89.14	178.39	260.8	-8626.34	823.27	6737.02	1983.02	8663.99	95.00	2.41	-1.48	-1.89
	15239.00	89.32	177.36	260.8	-8721.26	826.80	6738.29	1984.29	8758.91	95.00	1.10	0.19	-1.08
	15334.00	89.78	179.19	263.5	-8816.21	829.66	6739.04	1985.04	8853.80	95.00	1.99	0.48	1.93
	15428.00	89.66	179.44	263.5	-8910.20	830.78	6739.50	1985.50	8947.60	94.00	0.30	-0.13	0.27
	15523.00	89.54	179.13	266.2	-9005.19	831.97	6740.16	1986.16	9042.41	95.00	0.35	-0.13	-0.33
	15617.00	89.51	176.29	266.2	-9099.10	835.72	6740.94	1986.94	9136.33	94.00	3.02	-0.03	-3.02
	15712.00	90.80	178.27	269.0	-9193.99	840.23	6740.69	1986.69	9231.28	95.00	2.49	1.36	2.08
	15807.00	89.75	178.37	269.0	-9288.95	843.01	6740.23	1986.23	9326.18	95.00	1.11	-1.11	0.11
	15901.00	89.48	177.16	269.0	-9382.87	846.68	6740.86	1986.86	9420.11	94.00	1.32	-0.29	-1.29
	15996.00	89.32	179.32	269.0	-9477.82	849.60	6741.86	1987.86	9515.00	95.00	2.28	-0.17	2.27
	16090.00	89.26	181.37	269.0	-9571.80	849.03	6743.02	1989.02	9608.67	94.00	2.18	-0.06	2.18
	16185.00	89.17	180.91	269.0	-9666.77	847.14	6744.32	1990.32	9703.22	95.00	0.49	-0.09	-0.48
	16280.00	89.32	180.05	271.7	-9761.76	846.35	6745.58	1991.58	9797.87	95.00	0.92	0.16	-0.91
	16374.00	89.69	181.52	258.1	-9855.75	845.06	6746.39	1992.39	9891.48	94.00	1.61	0.39	1.56
	16469.00	89.41	180.30	347.3	-9950.73	843.55	6747.13	1993.13	9986.08	95.00	1.32	-0.29	-1.28
	16564.00	90.15	182.21	269.0	-10045.70	841.47	6747.50	1993.50	10080.61	95.00	2.16	0.78	2.01
	16658.00	89.82	181.63	271.7	-10139.65	838.32	6747.52	1993.52	10174.05	94.00	0.71	-0.35	-0.62
	16753.00	89.57	180.44	271.7	-10234.63	836.60	6748.03	1994.03	10268.62	95.00	1.28	-0.26	-1.25
	16848.00	89.57	178.74	274.4	-10329.62	837.28	6748.74	1994.74	10363.39	95.00	1.79	-0.00	-1.79
	16943.00	89.45	177.83	274.4	-10424.57	840.13	6749.55	1995.55	10458.28	95.00	0.97	-0.13	-0.96
	17037.00	89.69	177.47	274.4	-10518.49	843.98	6750.26	1996.26	10552.22	94.00	0.46	0.26	-0.38
	17132.00	89.78	175.99	277.1	-10613.33	849.40	6750.70	1996.70	10647.20	95.00	1.56	0.09	-1.56
	17227.00	89.91	175.69	277.1	-10708.08	856.29	6750.96	1996.96	10742.20	95.00	0.34	0.14	-0.32
	17321.00	89.94	175.44	277.1	-10801.80	863.56	6751.08	1997.08	10836.20	94.00	0.27	0.03	-0.27
	17338.00	89.97	175.39	263.5	-10818.75	864.92	6751.09	1997.09	10853.20	17.00	0.34	0.18	-0.29
Projection	17362.00	89.97	175.39	N/A	-10842.67	866.85	6751.10	1997.10	10877.20	24.00	0.00	0.01	-0.01