

Bison Oil & Gas II, LLC

WELD COUNTY, COLORADO (NAD 83)

HUNT FED 8-60 6A LOT 3 SEC 6 T8N R60W 6TH PM

HUNT FED 8-60 6A-31-30-7

Wellbore #1

Plan: Design #1

Standard Planning Report

05 February, 2021



Project: WELD COUNTY, COLORADO (NAD 83)
Site: HUNT FED 8-60 6A LOT 3 SEC 6 T8N R60W 6TH PM
Well: HUNT FED 8-60 6A-31-30-7
Wellbore: Wellbore #1
Design: Design #1

ANNOTATIONS

MD	Inc	Azi	TVD	+N/-S	+E/-W	Vsect	Dep	Annotation
800.0	0.00	0.00	800.0	0.0	0.0	0.0	0.0	Start Build 2.00
1886.5	21.73	86.33	1860.6	13.0	203.2	38.4	203.6	Start 3122.5 hold at 1886.5 MD
5009.0	21.73	86.33	4761.3	87.0	1356.8	256.5	1359.6	Start Drop -2.00
6095.5	0.00	0.00	5821.9	100.0	1560.0	294.9	1563.2	Start 100.0 hold at 6095.5 MD
6195.5	0.00	0.00	5921.9	100.0	1560.0	294.9	1563.2	Start Build 10.30
7069.0	90.00	356.51	6478.0	655.1	1526.2	841.3	2119.3	Start DLS 0.02 TFO -89.99
14274.7	90.00	355.31	6478.0	7842.3	1012.5	7907.3	9325.0	Start 101.0 hold at 14274.7 MD
14375.7	90.00	355.31	6478.0	7942.9	1004.3	8006.1	9425.9	TD at 14375.7

PROPOSED LOCAL COORDINATES:

SHL: 319 ft FNL & 1712 ft FWL Sec 6

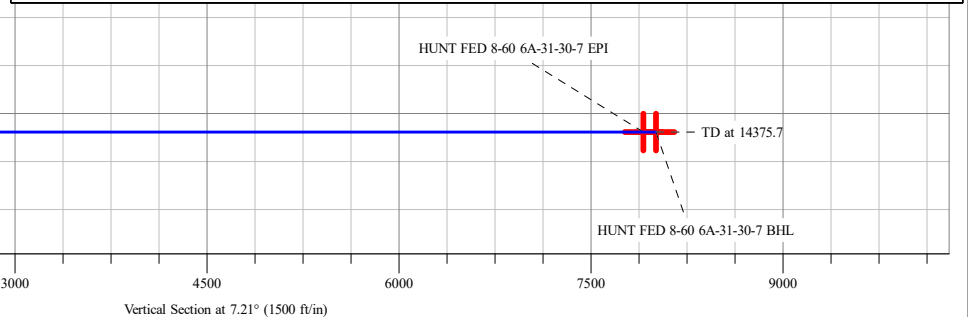
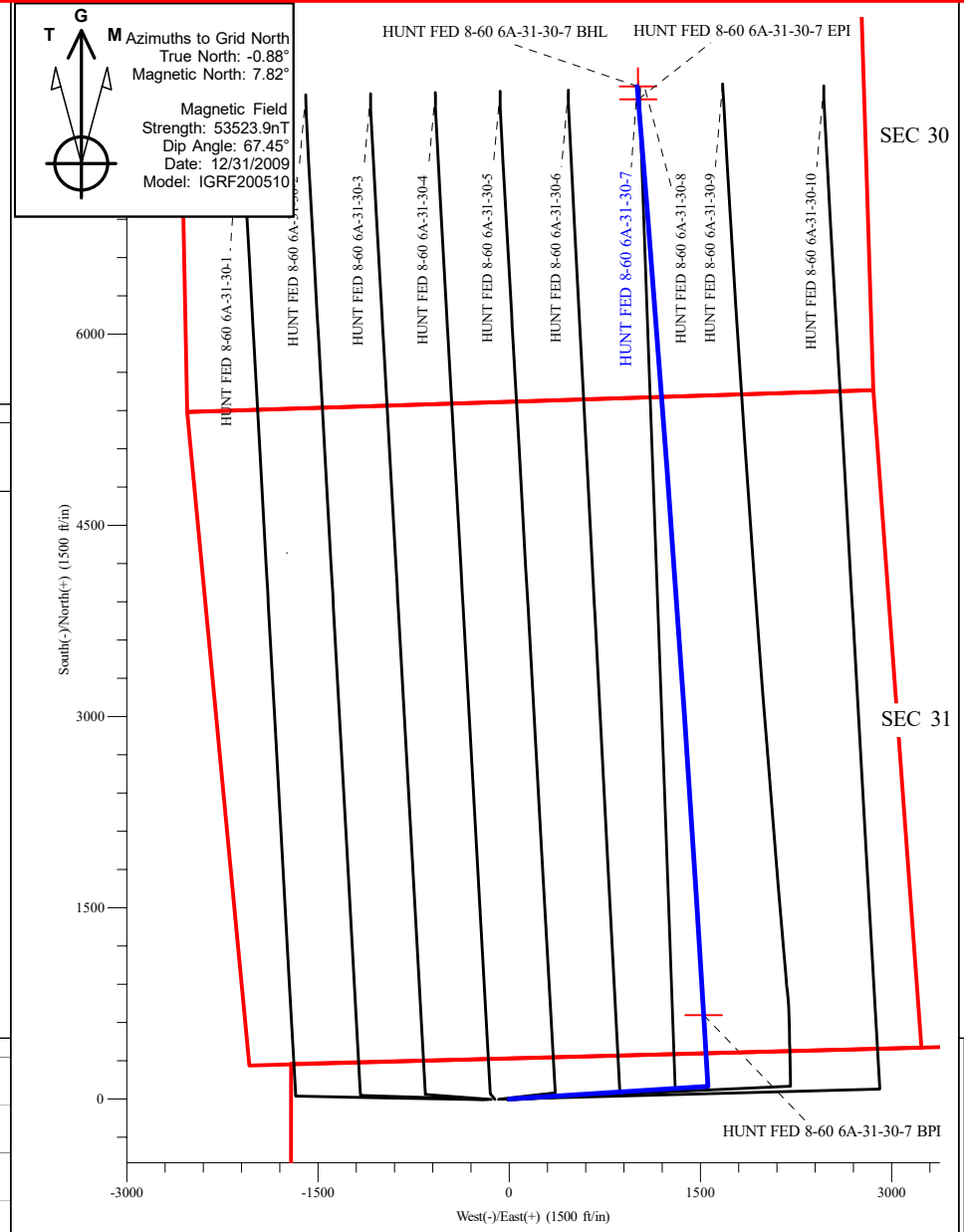
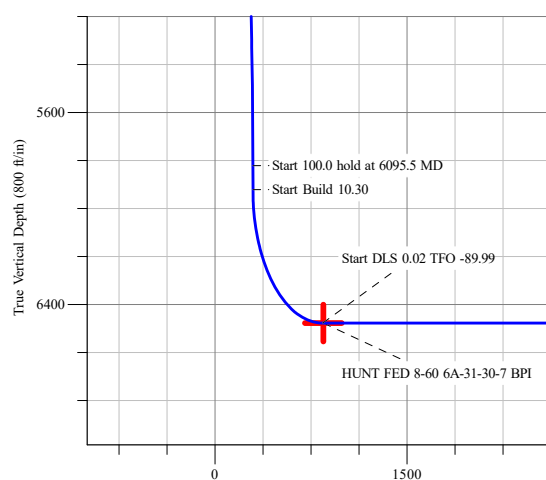
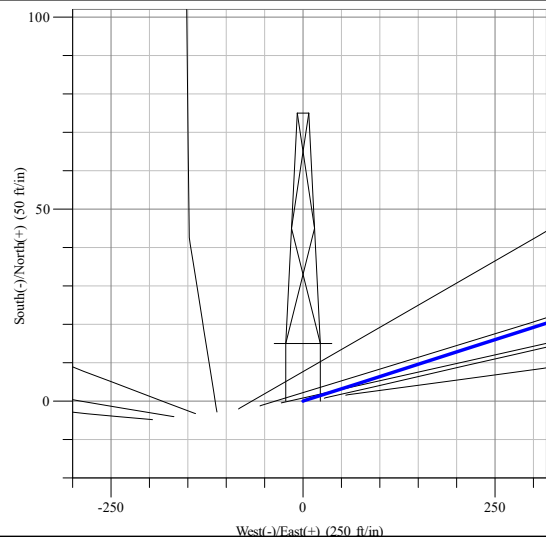
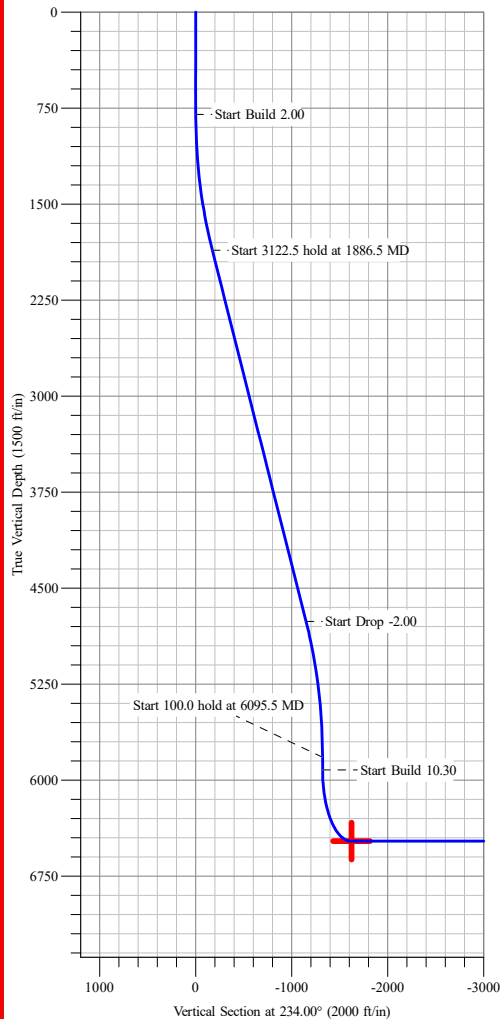
BPI : 300 ft FSL & 1686 ft FEL Sec 31

EPI: 2340 ft FSL & 1772 ft FEL Sec 30

BHL: 2440 ft FSL & 1771 ft FEL Sec 30

WELLBORE TARGET DETAILS (LAT/LONG)

Name	TVD	+N/-S	+E/-W	Northing	Easting	Latitude	Longitude
HUNT FED 8-60 6A-31-30-7 BPI	6478.0	659.3	1525.9	457375.52	1030050.33	40° 41' 57.941 N	104° 7' 53.652 W
HUNT FED 8-60 6A-31-30-7 EPI	6478.0	7842.3	1012.5	459564.88	1029893.85	40° 43' 8.987 N	104° 7' 58.879 W
HUNT FED 8-60 6A-31-30-7 BHL	6478.0	7942.1	1010.7	459595.30	1029893.30	40° 43' 9.973 N	104° 7' 58.883 W



Planning Report

Database:	EDM 5000.16 Single User Db	Local Co-ordinate Reference:	Well HUNT FED 8-60 6A-31-30-7
Company:	Bison Oil & Gas II, LLC	TVD Reference:	KB 25 @ 4947.6ft
Project:	WELD COUNTY, COLORADO (NAD 83)	MD Reference:	KB 25 @ 4947.6ft
Site:	HUNT FED 8-60 6A LOT 3 SEC 6 T8N R60W 6TH PM	North Reference:	Grid
Well:	HUNT FED 8-60 6A-31-30-7	Survey Calculation Method:	Minimum Curvature
Wellbore:	Wellbore #1		
Design:	Design #1		

Project	WELD COUNTY, COLORADO (NAD 83),		
Map System:	US State Plane 1983	System Datum:	Mean Sea Level
Geo Datum:	North American Datum 1983		
Map Zone:	Colorado Northern Zone		

Site		HUNT FED 8-60 6A LOT 3 SEC 6 T8N R60W 6TH PM			
Site Position:		Northing:	457,173.08 m	Latitude:	40° 41' 51.641 N
From:	Lat/Long	Easting:	1,029,525.50 m	Longitude:	104° 8' 16.138 W
Position Uncertainty:	2.0 ft	Slot Radius:	13.200 in		

Well	HUNT FED 8-60 6A-31-30-7					
Well Position	+N/-S	0.0 ft	Northing:	457,174.55 m	Latitude:	40° 41' 51.659 N
	+E/-W	0.0 ft	Easting:	1,029,585.24 m	Longitude:	104° 8' 13.592 W
Position Uncertainty		2.0 ft	Wellhead Elevation:	ft	Ground Level:	4,922.6 ft
Grid Convergence:		0.88 °				

Wellbore	Wellbore #1				
Magnetics	Model Name	Sample Date	Declination (°)	Dip Angle (°)	Field Strength (nT)
	IGRF200510	12/31/2009	8.70	67.45	53,523.94764607

Design	Design #1				
Audit Notes:					
Version:		Phase:	PROTOTYPE	Tie On Depth:	0.0
Vertical Section:	Depth From (TVD) (ft)	+N/-S (ft)	+E/-W (ft)	Direction (°)	
	0.0	0.0	0.0	7.21	

Plan Survey Tool Program	Date	2/3/2021			
Depth From (ft)	Depth To (ft)	Survey (Wellbore)	Tool Name	Remarks	
1	0.0	14,375.7	Design #1 (Wellbore #1)	MWD	
				Fixed:v2:standard declinatic	

Planning Report

Database:	EDM 5000.16 Single User Db	Local Co-ordinate Reference:	Well HUNT FED 8-60 6A-31-30-7
Company:	Bison Oil & Gas II, LLC	TVD Reference:	KB 25 @ 4947.6ft
Project:	WELD COUNTY, COLORADO (NAD 83)	MD Reference:	KB 25 @ 4947.6ft
Site:	HUNT FED 8-60 6A LOT 3 SEC 6 T8N R60W 6TH PM	North Reference:	Grid
Well:	HUNT FED 8-60 6A-31-30-7	Survey Calculation Method:	Minimum Curvature
Wellbore:	Wellbore #1		
Design:	Design #1		

Plan Sections										
Measured Depth (ft)	Inclination (°)	Azimuth (°)	Vertical Depth (ft)	+N/-S (ft)	+E/-W (ft)	Dogleg Rate (°/100ft)	Build Rate (°/100ft)	Turn Rate (°/100ft)	TFO (°)	Target
0.0	0.00	0.00	0.0	0.0	0.0	0.00	0.00	0.00	0.00	
800.0	0.00	0.00	800.0	0.0	0.0	0.00	0.00	0.00	0.00	
1,886.5	21.73	86.33	1,860.6	13.0	203.2	2.00	2.00	0.00	86.33	
5,009.0	21.73	86.33	4,761.3	87.0	1,356.8	0.00	0.00	0.00	0.00	
6,095.5	0.00	0.00	5,821.9	100.0	1,560.0	2.00	-2.00	0.00	180.00	
6,195.5	0.00	0.00	5,921.9	100.0	1,560.0	0.00	0.00	0.00	0.00	
7,069.0	90.00	356.51	6,478.0	655.1	1,526.2	10.30	10.30	0.00	356.51	HUNT FED 8-60 6A
14,274.7	90.00	355.31	6,478.0	7,842.3	1,012.5	0.02	0.00	-0.02	-89.99	HUNT FED 8-60 6A
14,375.7	90.00	355.31	6,478.0	7,942.9	1,004.3	0.00	0.00	0.00	0.00	HUNT FED 8-60 6A

Planning Report

Database:	EDM 5000.16 Single User Db	Local Co-ordinate Reference:	Well HUNT FED 8-60 6A-31-30-7
Company:	Bison Oil & Gas II, LLC	TVD Reference:	KB 25 @ 4947.6ft
Project:	WELD COUNTY, COLORADO (NAD 83)	MD Reference:	KB 25 @ 4947.6ft
Site:	HUNT FED 8-60 6A LOT 3 SEC 6 T8N R60W 6TH PM	North Reference:	Grid
Well:	HUNT FED 8-60 6A-31-30-7	Survey Calculation Method:	Minimum Curvature
Wellbore:	Wellbore #1		
Design:	Design #1		

Planned Survey									
Measured Depth (ft)	Inclination (°)	Azimuth (°)	Vertical Depth (ft)	+N/-S (ft)	+E/-W (ft)	Vertical Section (ft)	Dogleg Rate (°/100ft)	Build Rate (°/100ft)	Turn Rate (°/100ft)
0.0	0.00	0.00	0.0	0.0	0.0	0.0	0.00	0.00	0.00
100.0	0.00	0.00	100.0	0.0	0.0	0.0	0.00	0.00	0.00
200.0	0.00	0.00	200.0	0.0	0.0	0.0	0.00	0.00	0.00
300.0	0.00	0.00	300.0	0.0	0.0	0.0	0.00	0.00	0.00
400.0	0.00	0.00	400.0	0.0	0.0	0.0	0.00	0.00	0.00
500.0	0.00	0.00	500.0	0.0	0.0	0.0	0.00	0.00	0.00
600.0	0.00	0.00	600.0	0.0	0.0	0.0	0.00	0.00	0.00
700.0	0.00	0.00	700.0	0.0	0.0	0.0	0.00	0.00	0.00
800.0	0.00	0.00	800.0	0.0	0.0	0.0	0.00	0.00	0.00
Start Build 2.00									
900.0	2.00	86.33	900.0	0.1	1.7	0.3	2.00	2.00	0.00
1,000.0	4.00	86.33	999.8	0.4	7.0	1.3	2.00	2.00	0.00
1,100.0	6.00	86.33	1,099.5	1.0	15.7	3.0	2.00	2.00	0.00
1,200.0	8.00	86.33	1,198.7	1.8	27.8	5.3	2.00	2.00	0.00
1,300.0	10.00	86.33	1,297.5	2.8	43.4	8.2	2.00	2.00	0.00
1,400.0	12.00	86.33	1,395.6	4.0	62.5	11.8	2.00	2.00	0.00
1,500.0	14.00	86.33	1,493.1	5.4	84.9	16.1	2.00	2.00	0.00
1,600.0	16.00	86.33	1,589.6	7.1	110.7	20.9	2.00	2.00	0.00
1,700.0	18.00	86.33	1,685.3	9.0	139.9	26.5	2.00	2.00	0.00
1,800.0	20.00	86.33	1,779.8	11.1	172.4	32.6	2.00	2.00	0.00
1,886.5	21.73	86.33	1,860.6	13.0	203.2	38.4	2.00	2.00	0.00
Start 3122.5 hold at 1886.5 MD									
1,900.0	21.73	86.33	1,873.2	13.3	208.1	39.3	0.00	0.00	0.00
2,000.0	21.73	86.33	1,966.1	15.7	245.1	46.3	0.00	0.00	0.00
2,100.0	21.73	86.33	2,059.0	18.1	282.0	53.3	0.00	0.00	0.00
2,200.0	21.73	86.33	2,151.9	20.4	319.0	60.3	0.00	0.00	0.00
2,300.0	21.73	86.33	2,244.8	22.8	355.9	67.3	0.00	0.00	0.00
2,400.0	21.73	86.33	2,337.7	25.2	392.9	74.3	0.00	0.00	0.00
2,500.0	21.73	86.33	2,430.5	27.6	429.8	81.3	0.00	0.00	0.00
2,600.0	21.73	86.33	2,523.4	29.9	466.8	88.2	0.00	0.00	0.00
2,700.0	21.73	86.33	2,616.3	32.3	503.7	95.2	0.00	0.00	0.00
2,800.0	21.73	86.33	2,709.2	34.7	540.7	102.2	0.00	0.00	0.00
2,900.0	21.73	86.33	2,802.1	37.0	577.6	109.2	0.00	0.00	0.00
3,000.0	21.73	86.33	2,895.0	39.4	614.6	116.2	0.00	0.00	0.00
3,100.0	21.73	86.33	2,987.9	41.8	651.5	123.2	0.00	0.00	0.00
3,200.0	21.73	86.33	3,080.8	44.1	688.5	130.1	0.00	0.00	0.00
3,300.0	21.73	86.33	3,173.7	46.5	725.4	137.1	0.00	0.00	0.00
3,400.0	21.73	86.33	3,266.6	48.9	762.4	144.1	0.00	0.00	0.00
3,500.0	21.73	86.33	3,359.5	51.2	799.3	151.1	0.00	0.00	0.00
3,600.0	21.73	86.33	3,452.4	53.6	836.3	158.1	0.00	0.00	0.00
3,700.0	21.73	86.33	3,545.3	56.0	873.2	165.1	0.00	0.00	0.00
3,800.0	21.73	86.33	3,638.2	58.3	910.1	172.0	0.00	0.00	0.00
3,900.0	21.73	86.33	3,731.1	60.7	947.1	179.0	0.00	0.00	0.00
4,000.0	21.73	86.33	3,824.0	63.1	984.0	186.0	0.00	0.00	0.00
4,100.0	21.73	86.33	3,916.8	65.4	1,021.0	193.0	0.00	0.00	0.00
4,200.0	21.73	86.33	4,009.7	67.8	1,057.9	200.0	0.00	0.00	0.00
4,300.0	21.73	86.33	4,102.6	70.2	1,094.9	207.0	0.00	0.00	0.00
4,400.0	21.73	86.33	4,195.5	72.6	1,131.8	214.0	0.00	0.00	0.00
4,500.0	21.73	86.33	4,288.4	74.9	1,168.8	220.9	0.00	0.00	0.00
4,600.0	21.73	86.33	4,381.3	77.3	1,205.7	227.9	0.00	0.00	0.00
4,700.0	21.73	86.33	4,474.2	79.7	1,242.7	234.9	0.00	0.00	0.00
4,800.0	21.73	86.33	4,567.1	82.0	1,279.6	241.9	0.00	0.00	0.00
4,900.0	21.73	86.33	4,660.0	84.4	1,316.6	248.9	0.00	0.00	0.00

Planning Report

Database:	EDM 5000.16 Single User Db	Local Co-ordinate Reference:	Well HUNT FED 8-60 6A-31-30-7
Company:	Bison Oil & Gas II, LLC	TVD Reference:	KB 25 @ 4947.6ft
Project:	WELD COUNTY, COLORADO (NAD 83)	MD Reference:	KB 25 @ 4947.6ft
Site:	HUNT FED 8-60 6A LOT 3 SEC 6 T8N R60W 6TH PM	North Reference:	Grid
Well:	HUNT FED 8-60 6A-31-30-7	Survey Calculation Method:	Minimum Curvature
Wellbore:	Wellbore #1		
Design:	Design #1		

Planned Survey									
Measured Depth (ft)	Inclination (°)	Azimuth (°)	Vertical Depth (ft)	+N/-S (ft)	+E/-W (ft)	Vertical Section (ft)	Dogleg Rate (°/100ft)	Build Rate (°/100ft)	Turn Rate (°/100ft)
5,000.0	21.73	86.33	4,752.9	86.8	1,353.5	255.9	0.00	0.00	0.00
5,009.0	21.73	86.33	4,761.3	87.0	1,356.8	256.5	0.00	0.00	0.00
Start Drop -2.00									
5,100.0	19.91	86.33	4,846.3	89.0	1,389.1	262.6	2.00	-2.00	0.00
5,200.0	17.91	86.33	4,940.9	91.1	1,421.5	268.7	2.00	-2.00	0.00
5,300.0	15.91	86.33	5,036.6	93.0	1,450.5	274.2	2.00	-2.00	0.00
5,400.0	13.91	86.33	5,133.2	94.6	1,476.2	279.0	2.00	-2.00	0.00
5,500.0	11.91	86.33	5,230.7	96.1	1,498.5	283.3	2.00	-2.00	0.00
5,600.0	9.91	86.33	5,328.9	97.3	1,517.3	286.8	2.00	-2.00	0.00
5,700.0	7.91	86.33	5,427.6	98.3	1,532.8	289.7	2.00	-2.00	0.00
5,800.0	5.91	86.33	5,526.9	99.0	1,544.8	292.0	2.00	-2.00	0.00
5,900.0	3.91	86.33	5,626.5	99.6	1,553.3	293.6	2.00	-2.00	0.00
6,000.0	1.91	86.33	5,726.4	99.9	1,558.4	294.6	2.00	-2.00	0.00
6,095.5	0.00	0.00	5,821.9	100.0	1,560.0	294.9	2.00	-2.00	0.00
Start 100.0 hold at 6095.5 MD									
6,100.0	0.00	0.00	5,826.4	100.0	1,560.0	294.9	0.00	0.00	0.00
6,195.5	0.00	0.00	5,921.9	100.0	1,560.0	294.9	0.00	0.00	0.00
Start Build 10.30									
6,200.0	0.46	356.51	5,926.4	100.0	1,560.0	294.9	10.30	10.30	0.00
6,300.0	10.77	356.51	6,025.8	109.8	1,559.4	304.5	10.30	10.30	0.00
6,400.0	21.07	356.51	6,121.8	137.1	1,557.7	331.4	10.30	10.30	0.00
6,500.0	31.37	356.51	6,211.4	181.1	1,555.1	374.8	10.30	10.30	0.00
6,600.0	41.67	356.51	6,291.7	240.5	1,551.4	433.2	10.30	10.30	0.00
6,700.0	51.98	356.51	6,360.0	313.2	1,547.0	504.7	10.30	10.30	0.00
6,800.0	62.28	356.51	6,414.2	396.9	1,541.9	587.2	10.30	10.30	0.00
6,900.0	72.58	356.51	6,452.5	488.9	1,536.3	677.8	10.30	10.30	0.00
7,000.0	82.89	356.51	6,473.7	586.3	1,530.4	773.7	10.30	10.30	0.00
7,069.0	90.00	356.51	6,478.0	655.1	1,526.2	841.3	10.30	10.30	0.00
Start DLS 0.02 TFO -89.99									
7,073.3	90.00	356.51	6,478.0	659.3	1,525.9	845.5	0.00	0.00	0.00
HUNT FED 8-60 6A-31-30-7 BPI									
7,100.0	90.00	356.51	6,478.0	686.0	1,524.3	871.8	0.02	0.00	-0.02
7,200.0	90.00	356.49	6,478.0	785.8	1,518.2	970.0	0.02	0.00	-0.02
7,300.0	90.00	356.47	6,478.0	885.6	1,512.0	1,068.3	0.02	0.00	-0.02
7,400.0	90.00	356.46	6,478.0	985.4	1,505.9	1,166.5	0.02	0.00	-0.02
7,500.0	90.00	356.44	6,478.0	1,085.2	1,499.7	1,264.8	0.02	0.00	-0.02
7,600.0	90.00	356.42	6,478.0	1,185.0	1,493.5	1,363.0	0.02	0.00	-0.02
7,700.0	90.00	356.41	6,478.0	1,284.8	1,487.2	1,461.2	0.02	0.00	-0.02
7,800.0	90.00	356.39	6,478.0	1,384.6	1,480.9	1,559.5	0.02	0.00	-0.02
7,900.0	90.00	356.37	6,478.0	1,484.4	1,474.6	1,657.7	0.02	0.00	-0.02
8,000.0	90.00	356.36	6,478.0	1,584.2	1,468.3	1,755.9	0.02	0.00	-0.02
8,100.0	90.00	356.34	6,478.0	1,684.0	1,461.9	1,854.1	0.02	0.00	-0.02
8,200.0	90.00	356.32	6,478.0	1,783.8	1,455.5	1,952.3	0.02	0.00	-0.02
8,300.0	90.00	356.31	6,478.0	1,883.6	1,449.1	2,050.5	0.02	0.00	-0.02
8,400.0	90.00	356.29	6,478.0	1,983.4	1,442.6	2,148.7	0.02	0.00	-0.02
8,500.0	90.00	356.27	6,478.0	2,083.2	1,436.1	2,246.9	0.02	0.00	-0.02
8,600.0	90.00	356.26	6,478.0	2,183.0	1,429.6	2,345.1	0.02	0.00	-0.02
8,700.0	90.00	356.24	6,478.0	2,282.8	1,423.1	2,443.3	0.02	0.00	-0.02
8,800.0	90.00	356.22	6,478.0	2,382.6	1,416.5	2,541.4	0.02	0.00	-0.02
8,900.0	90.00	356.21	6,478.0	2,482.3	1,409.9	2,639.6	0.02	0.00	-0.02
9,000.0	90.00	356.19	6,478.0	2,582.1	1,403.3	2,737.7	0.02	0.00	-0.02
9,100.0	90.00	356.17	6,478.0	2,681.9	1,396.6	2,835.9	0.02	0.00	-0.02
9,200.0	90.00	356.16	6,478.0	2,781.7	1,389.9	2,934.1	0.02	0.00	-0.02

Planning Report

Database:	EDM 5000.16 Single User Db	Local Co-ordinate Reference:	Well HUNT FED 8-60 6A-31-30-7
Company:	Bison Oil & Gas II, LLC	TVD Reference:	KB 25 @ 4947.6ft
Project:	WELD COUNTY, COLORADO (NAD 83)	MD Reference:	KB 25 @ 4947.6ft
Site:	HUNT FED 8-60 6A LOT 3 SEC 6 T8N R60W 6TH PM	North Reference:	Grid
Well:	HUNT FED 8-60 6A-31-30-7	Survey Calculation Method:	Minimum Curvature
Wellbore:	Wellbore #1		
Design:	Design #1		

Planned Survey

Measured Depth (ft)	Inclination (°)	Azimuth (°)	Vertical Depth (ft)	+N/-S (ft)	+E/-W (ft)	Vertical Section (ft)	Dogleg Rate (°/100ft)	Build Rate (°/100ft)	Turn Rate (°/100ft)
9,300.0	90.00	356.14	6,478.0	2,881.4	1,383.2	3,032.2	0.02	0.00	-0.02
9,400.0	90.00	356.12	6,478.0	2,981.2	1,376.5	3,130.3	0.02	0.00	-0.02
9,500.0	90.00	356.11	6,478.0	3,081.0	1,369.7	3,228.5	0.02	0.00	-0.02
9,600.0	90.00	356.09	6,478.0	3,180.8	1,362.9	3,326.6	0.02	0.00	-0.02
9,700.0	90.00	356.07	6,478.0	3,280.5	1,356.1	3,424.7	0.02	0.00	-0.02
9,800.0	90.00	356.06	6,478.0	3,380.3	1,349.2	3,522.8	0.02	0.00	-0.02
9,900.0	90.00	356.04	6,478.0	3,480.1	1,342.3	3,620.9	0.02	0.00	-0.02
10,000.0	90.00	356.02	6,478.0	3,579.8	1,335.4	3,719.0	0.02	0.00	-0.02
10,100.0	90.00	356.01	6,478.0	3,679.6	1,328.4	3,817.1	0.02	0.00	-0.02
10,200.0	90.00	355.99	6,478.0	3,779.3	1,321.5	3,915.2	0.02	0.00	-0.02
10,300.0	90.00	355.97	6,478.0	3,879.1	1,314.5	4,013.3	0.02	0.00	-0.02
10,400.0	90.00	355.96	6,478.0	3,978.8	1,307.4	4,111.4	0.02	0.00	-0.02
10,500.0	90.00	355.94	6,478.0	4,078.6	1,300.4	4,209.5	0.02	0.00	-0.02
10,600.0	90.00	355.92	6,478.0	4,178.3	1,293.3	4,307.6	0.02	0.00	-0.02
10,700.0	90.00	355.91	6,478.0	4,278.1	1,286.1	4,405.6	0.02	0.00	-0.02
10,800.0	90.00	355.89	6,478.0	4,377.8	1,279.0	4,503.7	0.02	0.00	-0.02
10,900.0	90.00	355.87	6,478.0	4,477.6	1,271.8	4,601.7	0.02	0.00	-0.02
11,000.0	90.00	355.86	6,478.0	4,577.3	1,264.6	4,699.8	0.02	0.00	-0.02
11,100.0	90.00	355.84	6,478.0	4,677.0	1,257.4	4,797.8	0.02	0.00	-0.02
11,200.0	90.00	355.82	6,478.0	4,776.8	1,250.1	4,895.9	0.02	0.00	-0.02
11,300.0	90.00	355.81	6,478.0	4,876.5	1,242.8	4,993.9	0.02	0.00	-0.02
11,400.0	90.00	355.79	6,478.0	4,976.2	1,235.5	5,091.9	0.02	0.00	-0.02
11,500.0	90.00	355.77	6,478.0	5,076.0	1,228.1	5,189.9	0.02	0.00	-0.02
11,600.0	90.00	355.76	6,478.0	5,175.7	1,220.7	5,287.9	0.02	0.00	-0.02
11,700.0	90.00	355.74	6,478.0	5,275.4	1,213.3	5,386.0	0.02	0.00	-0.02
11,800.0	90.00	355.72	6,478.0	5,375.1	1,205.9	5,484.0	0.02	0.00	-0.02
11,900.0	90.00	355.71	6,478.0	5,474.9	1,198.4	5,581.9	0.02	0.00	-0.02
12,000.0	90.00	355.69	6,478.0	5,574.6	1,190.9	5,679.9	0.02	0.00	-0.02
12,100.0	90.00	355.67	6,478.0	5,674.3	1,183.4	5,777.9	0.02	0.00	-0.02
12,200.0	90.00	355.66	6,478.0	5,774.0	1,175.8	5,875.9	0.02	0.00	-0.02
12,300.0	90.00	355.64	6,478.0	5,873.7	1,168.2	5,973.9	0.02	0.00	-0.02
12,400.0	90.00	355.62	6,478.0	5,973.4	1,160.6	6,071.8	0.02	0.00	-0.02
12,500.0	90.00	355.61	6,478.0	6,073.1	1,153.0	6,169.8	0.02	0.00	-0.02
12,600.0	90.00	355.59	6,478.0	6,172.9	1,145.3	6,267.8	0.02	0.00	-0.02
12,700.0	90.00	355.57	6,478.0	6,272.6	1,137.6	6,365.7	0.02	0.00	-0.02
12,800.0	90.00	355.56	6,478.0	6,372.3	1,129.9	6,463.7	0.02	0.00	-0.02
12,900.0	90.00	355.54	6,478.0	6,472.0	1,122.1	6,561.6	0.02	0.00	-0.02
13,000.0	90.00	355.52	6,478.0	6,571.6	1,114.3	6,659.5	0.02	0.00	-0.02
13,100.0	90.00	355.51	6,478.0	6,671.3	1,106.5	6,757.4	0.02	0.00	-0.02
13,200.0	90.00	355.49	6,478.0	6,771.0	1,098.7	6,855.4	0.02	0.00	-0.02
13,300.0	90.00	355.47	6,478.0	6,870.7	1,090.8	6,953.3	0.02	0.00	-0.02
13,400.0	90.00	355.46	6,478.0	6,970.4	1,082.9	7,051.2	0.02	0.00	-0.02
13,500.0	90.00	355.44	6,478.0	7,070.1	1,074.9	7,149.1	0.02	0.00	-0.02
13,600.0	90.00	355.42	6,478.0	7,169.8	1,067.0	7,247.0	0.02	0.00	-0.02
13,700.0	90.00	355.41	6,478.0	7,269.5	1,059.0	7,344.9	0.02	0.00	-0.02
13,800.0	90.00	355.39	6,478.0	7,369.1	1,051.0	7,442.8	0.02	0.00	-0.02
13,900.0	90.00	355.37	6,478.0	7,468.8	1,042.9	7,540.6	0.02	0.00	-0.02
14,000.0	90.00	355.36	6,478.0	7,568.5	1,034.8	7,638.5	0.02	0.00	-0.02
14,100.0	90.00	355.34	6,478.0	7,668.2	1,026.7	7,736.4	0.02	0.00	-0.02
14,200.0	90.00	355.32	6,478.0	7,767.8	1,018.6	7,834.2	0.02	0.00	-0.02
14,274.7	90.00	355.31	6,478.0	7,842.3	1,012.5	7,907.3	0.02	0.00	-0.02

Start 101.0 hold at 14274.7 MD - HUNT FED 8-60 6A-31-30-7 EPI

Planning Report

Database:	EDM 5000.16 Single User Db	Local Co-ordinate Reference:	Well HUNT FED 8-60 6A-31-30-7
Company:	Bison Oil & Gas II, LLC	TVD Reference:	KB 25 @ 4947.6ft
Project:	WELD COUNTY, COLORADO (NAD 83)	MD Reference:	KB 25 @ 4947.6ft
Site:	HUNT FED 8-60 6A LOT 3 SEC 6 T8N R60W 6TH PM	North Reference:	Grid
Well:	HUNT FED 8-60 6A-31-30-7	Survey Calculation Method:	Minimum Curvature
Wellbore:	Wellbore #1		
Design:	Design #1		

Planned Survey

Measured Depth (ft)	Inclination (°)	Azimuth (°)	Vertical Depth (ft)	+N/-S (ft)	+E/-W (ft)	Vertical Section (ft)	Dogleg Rate (°/100ft)	Build Rate (°/100ft)	Turn Rate (°/100ft)
14,300.0	90.00	355.31	6,478.0	7,867.5	1,010.4	7,932.1	0.00	0.00	0.00
14,374.3	90.00	355.31	6,478.0	7,941.6	1,004.4	8,004.8	0.00	0.00	0.00
HUNT FED 8-60 6A-31-30-7 BHL									
14,375.7	90.00	355.31	6,478.0	7,942.9	1,004.3	8,006.1	0.00	0.00	0.00
TD at 14375.7									

Design Targets

Target Name - hit/miss target - Shape	Dip Angle (°)	Dip Dir. (°)	TVD (ft)	+N/-S (ft)	+E/-W (ft)	Northing (m)	Easting (m)	Latitude	Longitude
HUNT FED 8-60 6A-3 - plan hits target center - Point	0.00	0.00	6,478.0	659.3	1,525.9	457,375.52	1,030,050.34	40° 41' 57.941 N	104° 7' 53.652 W
HUNT FED 8-60 6A-3 - plan hits target center - Point	0.00	0.00	6,478.0	7,842.3	1,012.5	459,564.88	1,029,893.85	40° 43' 8.987 N	104° 7' 58.879 W
HUNT FED 8-60 6A-3 - Point	0.00	0.00	6,478.0	7,942.1	1,010.7	459,595.30	1,029,893.30	40° 43' 9.973 N	104° 7' 58.883 W

Plan Annotations

Measured Depth (ft)	Vertical Depth (ft)	Local Coordinates		Comment
		+N/-S (ft)	+E/-W (ft)	
800.0	800.0	0.0	0.0	Start Build 2.00
1,886.5	1,860.6	13.0	203.2	Start 3122.5 hold at 1886.5 MD
5,009.0	4,761.3	87.0	1,356.8	Start Drop -2.00
6,095.5	5,821.9	100.0	1,560.0	Start 100.0 hold at 6095.5 MD
6,195.5	5,921.9	100.0	1,560.0	Start Build 10.30
7,069.0	6,478.0	655.1	1,526.2	Start DLS 0.02 TFO -89.99
14,274.7	6,478.0	7,842.3	1,012.5	Start 101.0 hold at 14274.7 MD
14,375.7	6,478.0	7,942.9	1,004.3	TD at 14375.7