

Project: Rio Blanco County, CO
 Site: ELU O13 496 Pad
 Well: ELU O13 FED 24A-13 496
 Wellbore: Wellbore #1
 Design: Design #1
 Latitude: 39.698702
 Longitude: -108.114935
 Ground Level: 8118.0
 RKB @ 8148.0usft (30')

PROJECT DETAILS: Rio Blanco County, CO
 Geodetic System: Universal Transverse Mercator (US Survey Feet)
 Datum: NAD 1927 - Western US
 Ellipsoid: Clarke 1866
 Zone: Zone 12N (114 W to 108 W)
 System Datum: Mean Sea Level

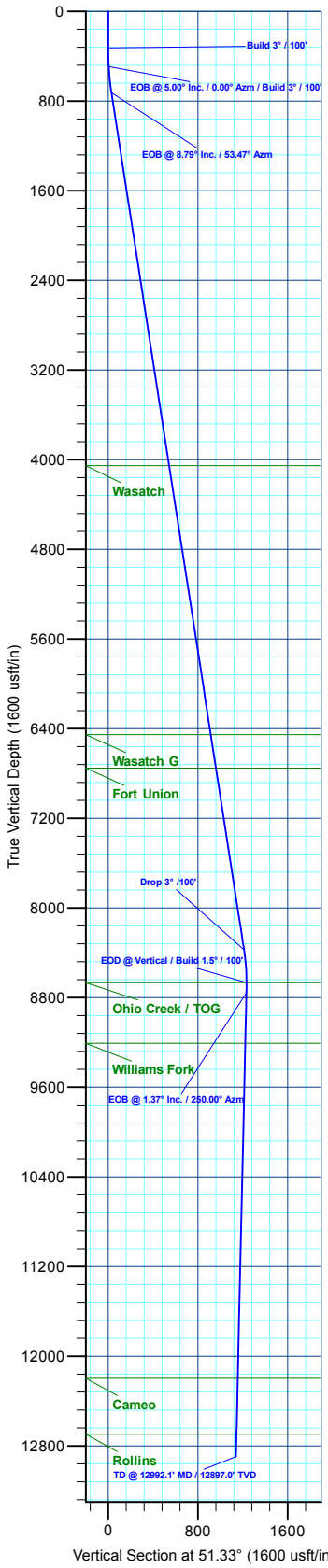
REFERENCE INFORMATION
 Vertical (TVD) Reference: RKB @ 8148.0usft (30')
 Section (VS) Reference: Slot - ELU O13 FED 24A-13 496(0.0N, 0.0E)
 Measured Depth Reference: RKB @ 8148.0usft (30')
 Calculation Method: Minimum Curvature

FORMATION TOP DETAILS		
TVDPath	MDPath	Formation
4053.0	4094.3	Wasatch
6453.0	6522.9	Wasatch G
6753.0	6826.4	Fort Union
8667.0	8760.9	Ohio Creek / TOG
9208.0	9302.0	Williams Fork
12197.0	12291.9	Cameo
12697.0	12792.0	Rollins

SECTION DETAILS									
MD	Inc	Azi	TVD	+N/-S	+E/-W	Dieg	TFace	Vsect	Annotation
0.0	0.00	0.00	0.0	0.0	0.0	0.00	0.00	0.0	
325.0	0.00	0.00	325.0	0.0	0.0	0.00	0.00	0.0	Build 3° / 100'
491.7	5.00	0.00	491.5	7.3	0.0	3.00	0.00	4.5	EOB @ 5.00° Inc. / 0.00° Azm / Build 3° / 100'
727.0	8.79	53.47	725.3	28.3	14.5	3.00	87.90	29.0	EOB @ 8.79° Inc. / 53.47° Azm
8467.8	8.79	53.47	8375.1	732.5	965.3	0.00	0.00	1211.4	Drop 3° / 100'
8760.9	0.00	0.00	8667.0	745.9	983.3	3.00	180.00	1233.8	EOD @ Vertical / Build 1.5° / 100'
8852.1	1.37	250.00	8758.3	745.5	982.3	1.50	250.00	1232.7	EOB @ 1.37° Inc. / 250.00° Azm
12992.1	1.37	250.00	12897.0	711.7	889.4	0.00	0.00	1139.0	TD @ 12992.1' MD / 12897.0' TVD

DESIGN TARGET DETAILS						
Name	TVD	+N/-S	+E/-W	Northing	Easting	Latitude
OHCR - 24A-13	8667.0	745.9	983.3	14430169.41	2452965.42	39.700749
PBHL - 24A-13	12897.0	711.7	889.4	14430132.20	2452872.60	39.700655

WELL DETAILS: ELU O13 FED 24A-13 496					
Ground Level : 8118.0					
+N/-S	+E/-W	Northing	Easting	Latitude	Longitude
0.0	0.0	14429392.30	2452006.60	39.698702	-108.114935

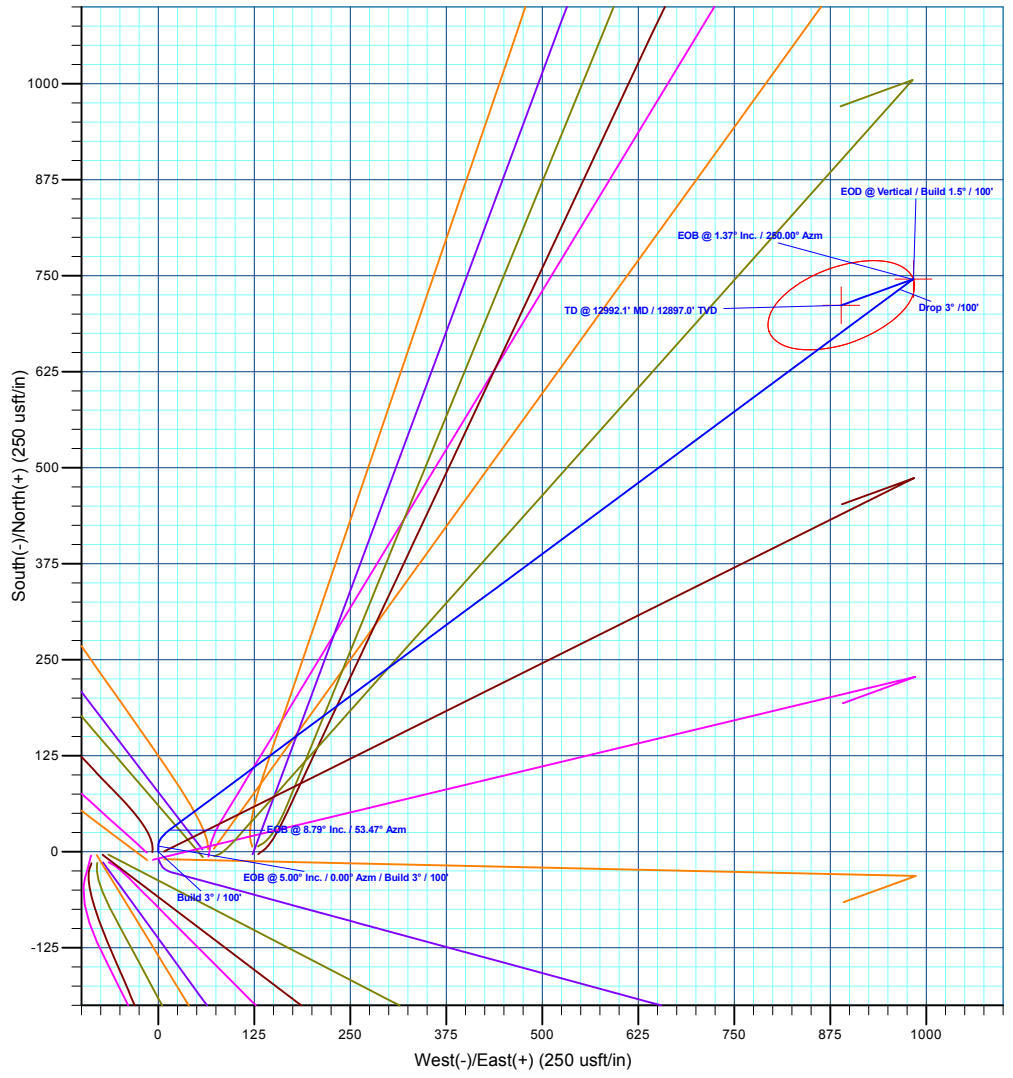


Compass Rose

North arrow pointing up, with 'T' for True North and 'M' for Magnetic North.

Azimuths to True North
 Magnetic North: 9.43°

Magnetic Field
 Strength: 51179.8nT
 Dip Angle: 65.82°
 Date: 6/5/2020
 Model: HDGM2020





Caerus Oil & Gas

Rio Blanco County, CO

ELU O13 496 Pad

ELU O13 FED 24A-13 496 - Slot ELU O13 FED 24A-13 496

Wellbore #1

Plan: Design #1

QES Well Planning Report

19 June, 2020



Database:	EDM 5000.1 Single User Db	Local Co-ordinate Reference:	Well ELU O13 FED 24A-13 496 - Slot ELU O13 FED 24A-13 496
Company:	Caerus Oil & Gas	TVD Reference:	RKB @ 8148.0usft (30')
Project:	Rio Blanco County, CO	MD Reference:	RKB @ 8148.0usft (30')
Site:	ELU O13 496 Pad	North Reference:	True
Well:	ELU O13 FED 24A-13 496	Survey Calculation Method:	Minimum Curvature
Wellbore:	Wellbore #1		
Design:	Design #1		

Project	Rio Blanco County, CO		
Map System:	Universal Transverse Mercator (US Survey Fee	System Datum:	Mean Sea Level
Geo Datum:	NAD 1927 - Western US		
Map Zone:	Zone 12N (114 W to 108 W)		

Site	ELU O13 496 Pad		
Site Position:		Northing:	14,429,398.00 usft
From:	Map	Easting:	2,452,071.40 usft
Position Uncertainty:	0.0 usft	Slot Radius:	13-3/16 "
		Latitude:	39.698712
		Longitude:	-108.114705
		Grid Convergence:	1.84 °

Well	ELU O13 FED 24A-13 496 - Slot ELU O13 FED 24A-13 496		
Well Position	+N/-S	-3.6 usft	Northing:
	+E/-W	-64.9 usft	Easting:
Position Uncertainty		0.0 usft	Wellhead Elevation:
			Latitude:
			Longitude:
			Ground Level:

Wellbore	Wellbore #1				
Magnetics	Model Name	Sample Date	Declination (°)	Dip Angle (°)	Field Strength (nT)
	HDGM2020	6/5/2020	9.43	65.82	51,179.80000000

Design	Design #1			
Audit Notes:				
Version:	Phase:	PLAN	Tie On Depth:	0.0
Vertical Section:	Depth From (TVD) (usft)	+N/-S (usft)	+E/-W (usft)	Direction (°)
	0.0	0.0	0.0	51.33

Plan Sections										
Measured Depth (usft)	Inclination (°)	Azimuth (°)	Vertical Depth (usft)	+N/-S (usft)	+E/-W (usft)	Dogleg Rate (°/100usft)	Build Rate (°/100usft)	Turn Rate (°/100usft)	TFO (°)	Target
0.0	0.00	0.00	0.0	0.0	0.0	0.00	0.00	0.00	0.00	
325.0	0.00	0.00	325.0	0.0	0.0	0.00	0.00	0.00	0.00	
491.7	5.00	0.00	491.5	7.3	0.0	3.00	3.00	0.00	0.00	
727.0	8.79	53.47	725.3	28.3	14.5	3.00	1.61	22.72	87.90	
8,467.8	8.79	53.47	8,375.1	732.5	965.3	0.00	0.00	0.00	0.00	
8,760.9	0.00	0.00	8,667.0	745.9	983.3	3.00	-3.00	0.00	180.00	OHCR - 24A-13
8,852.1	1.37	250.00	8,758.3	745.5	982.3	1.50	1.50	-120.52	250.00	
12,992.1	1.37	250.00	12,897.0	711.7	889.4	0.00	0.00	0.00	0.00	PBHL - 24A-13

Database:	EDM 5000.1 Single User Db	Local Co-ordinate Reference:	Well ELU O13 FED 24A-13 496 - Slot ELU O13 FED 24A-13 496
Company:	Caerus Oil & Gas	TVD Reference:	RKB @ 8148.0usft (30')
Project:	Rio Blanco County, CO	MD Reference:	RKB @ 8148.0usft (30')
Site:	ELU O13 496 Pad	North Reference:	True
Well:	ELU O13 FED 24A-13 496	Survey Calculation Method:	Minimum Curvature
Wellbore:	Wellbore #1		
Design:	Design #1		

Planned Survey

Measured Depth (usft)	Inclination (°)	Azimuth (°)	Vertical Depth (usft)	+N/-S (usft)	+E/-W (usft)	Vertical Section (usft)	Dogleg Rate (°/100usft)	Build Rate (°/100usft)	Turn Rate (°/100usft)
0.0	0.00	0.00	0.0	0.0	0.0	0.0	0.00	0.00	0.00
100.0	0.00	0.00	100.0	0.0	0.0	0.0	0.00	0.00	0.00
200.0	0.00	0.00	200.0	0.0	0.0	0.0	0.00	0.00	0.00
300.0	0.00	0.00	300.0	0.0	0.0	0.0	0.00	0.00	0.00
Build 3° / 100'									
325.0	0.00	0.00	325.0	0.0	0.0	0.0	0.00	0.00	0.00
400.0	2.25	0.00	400.0	1.5	0.0	0.9	3.00	3.00	0.00
EOB @ 5.00° Inc. / 0.00° Azm / Build 3° / 100'									
491.7	5.00	0.00	491.5	7.3	0.0	4.5	3.00	3.00	0.00
500.0	5.02	2.86	499.8	8.0	0.0	5.0	3.00	0.18	34.31
600.0	6.06	32.46	599.3	16.8	3.1	12.9	3.00	1.04	29.60
700.0	8.14	50.21	698.5	25.8	11.3	25.0	3.00	2.08	17.76
EOB @ 8.79° Inc. / 53.47° Azm									
727.0	8.79	53.47	725.3	28.3	14.5	29.0	3.00	2.42	12.08
800.0	8.79	53.47	797.4	34.9	23.4	40.1	0.00	0.00	0.00
900.0	8.79	53.47	896.2	44.0	35.7	55.4	0.00	0.00	0.00
1,000.0	8.79	53.47	995.0	53.1	48.0	70.7	0.00	0.00	0.00
1,100.0	8.79	53.47	1,093.9	62.2	60.3	85.9	0.00	0.00	0.00
1,200.0	8.79	53.47	1,192.7	71.3	72.6	101.2	0.00	0.00	0.00
1,300.0	8.79	53.47	1,291.5	80.4	84.9	116.5	0.00	0.00	0.00
1,400.0	8.79	53.47	1,390.3	89.5	97.1	131.8	0.00	0.00	0.00
1,500.0	8.79	53.47	1,489.2	98.6	109.4	147.0	0.00	0.00	0.00
1,600.0	8.79	53.47	1,588.0	107.7	121.7	162.3	0.00	0.00	0.00
1,700.0	8.79	53.47	1,686.8	116.8	134.0	177.6	0.00	0.00	0.00
1,800.0	8.79	53.47	1,785.6	125.9	146.3	192.9	0.00	0.00	0.00
1,900.0	8.79	53.47	1,884.5	135.0	158.6	208.1	0.00	0.00	0.00
2,000.0	8.79	53.47	1,983.3	144.1	170.8	223.4	0.00	0.00	0.00
2,100.0	8.79	53.47	2,082.1	153.2	183.1	238.7	0.00	0.00	0.00
2,200.0	8.79	53.47	2,180.9	162.3	195.4	254.0	0.00	0.00	0.00
2,300.0	8.79	53.47	2,279.8	171.4	207.7	269.2	0.00	0.00	0.00
2,400.0	8.79	53.47	2,378.6	180.5	220.0	284.5	0.00	0.00	0.00
2,500.0	8.79	53.47	2,477.4	189.6	232.3	299.8	0.00	0.00	0.00
2,600.0	8.79	53.47	2,576.2	198.7	244.5	315.1	0.00	0.00	0.00
2,700.0	8.79	53.47	2,675.1	207.8	256.8	330.3	0.00	0.00	0.00
2,800.0	8.79	53.47	2,773.9	216.9	269.1	345.6	0.00	0.00	0.00
2,900.0	8.79	53.47	2,872.7	226.0	281.4	360.9	0.00	0.00	0.00
3,000.0	8.79	53.47	2,971.5	235.0	293.7	376.2	0.00	0.00	0.00
3,100.0	8.79	53.47	3,070.4	244.1	306.0	391.4	0.00	0.00	0.00
3,200.0	8.79	53.47	3,169.2	253.2	318.2	406.7	0.00	0.00	0.00
3,300.0	8.79	53.47	3,268.0	262.3	330.5	422.0	0.00	0.00	0.00
3,400.0	8.79	53.47	3,366.8	271.4	342.8	437.3	0.00	0.00	0.00
3,500.0	8.79	53.47	3,465.7	280.5	355.1	452.5	0.00	0.00	0.00
3,600.0	8.79	53.47	3,564.5	289.6	367.4	467.8	0.00	0.00	0.00
3,700.0	8.79	53.47	3,663.3	298.7	379.7	483.1	0.00	0.00	0.00
3,800.0	8.79	53.47	3,762.1	307.8	391.9	498.4	0.00	0.00	0.00
3,900.0	8.79	53.47	3,861.0	316.9	404.2	513.6	0.00	0.00	0.00
4,000.0	8.79	53.47	3,959.8	326.0	416.5	528.9	0.00	0.00	0.00
Wasatch									
4,094.3	8.79	53.47	4,053.0	334.6	428.1	543.3	0.00	0.00	0.00
4,100.0	8.79	53.47	4,058.6	335.1	428.8	544.2	0.00	0.00	0.00
4,200.0	8.79	53.47	4,157.4	344.2	441.1	559.5	0.00	0.00	0.00
4,300.0	8.79	53.47	4,256.3	353.3	453.4	574.7	0.00	0.00	0.00
4,400.0	8.79	53.47	4,355.1	362.4	465.6	590.0	0.00	0.00	0.00

Database:	EDM 5000.1 Single User Db	Local Co-ordinate Reference:	Well ELU O13 FED 24A-13 496 - Slot ELU O13 FED 24A-13 496
Company:	Caerus Oil & Gas	TVD Reference:	RKB @ 8148.0usft (30')
Project:	Rio Blanco County, CO	MD Reference:	RKB @ 8148.0usft (30')
Site:	ELU O13 496 Pad	North Reference:	True
Well:	ELU O13 FED 24A-13 496	Survey Calculation Method:	Minimum Curvature
Wellbore:	Wellbore #1		
Design:	Design #1		

Planned Survey

Measured Depth (usft)	Inclination (°)	Azimuth (°)	Vertical Depth (usft)	+N/-S (usft)	+E/-W (usft)	Vertical Section (usft)	Dogleg Rate (°/100usft)	Build Rate (°/100usft)	Turn Rate (°/100usft)
4,500.0	8.79	53.47	4,453.9	371.5	477.9	605.3	0.00	0.00	0.00
4,600.0	8.79	53.47	4,552.7	380.6	490.2	620.6	0.00	0.00	0.00
4,700.0	8.79	53.47	4,651.6	389.7	502.5	635.8	0.00	0.00	0.00
4,800.0	8.79	53.47	4,750.4	398.8	514.8	651.1	0.00	0.00	0.00
4,900.0	8.79	53.47	4,849.2	407.9	527.1	666.4	0.00	0.00	0.00
5,000.0	8.79	53.47	4,948.0	417.0	539.3	681.7	0.00	0.00	0.00
5,100.0	8.79	53.47	5,046.9	426.1	551.6	696.9	0.00	0.00	0.00
5,200.0	8.79	53.47	5,145.7	435.2	563.9	712.2	0.00	0.00	0.00
5,300.0	8.79	53.47	5,244.5	444.3	576.2	727.5	0.00	0.00	0.00
5,400.0	8.79	53.47	5,343.3	453.4	588.5	742.7	0.00	0.00	0.00
5,500.0	8.79	53.47	5,442.2	462.5	600.8	758.0	0.00	0.00	0.00
5,600.0	8.79	53.47	5,541.0	471.6	613.0	773.3	0.00	0.00	0.00
5,700.0	8.79	53.47	5,639.8	480.7	625.3	788.6	0.00	0.00	0.00
5,800.0	8.79	53.47	5,738.6	489.8	637.6	803.8	0.00	0.00	0.00
5,900.0	8.79	53.47	5,837.5	498.9	649.9	819.1	0.00	0.00	0.00
6,000.0	8.79	53.47	5,936.3	508.0	662.2	834.4	0.00	0.00	0.00
6,100.0	8.79	53.47	6,035.1	517.1	674.5	849.7	0.00	0.00	0.00
6,200.0	8.79	53.47	6,133.9	526.2	686.7	864.9	0.00	0.00	0.00
6,300.0	8.79	53.47	6,232.8	535.3	699.0	880.2	0.00	0.00	0.00
6,400.0	8.79	53.47	6,331.6	544.4	711.3	895.5	0.00	0.00	0.00
6,500.0	8.79	53.47	6,430.4	553.5	723.6	910.8	0.00	0.00	0.00
Wasatch G									
6,522.9	8.79	53.47	6,453.0	555.6	726.4	914.3	0.00	0.00	0.00
6,600.0	8.79	53.47	6,529.2	562.6	735.9	926.0	0.00	0.00	0.00
6,700.0	8.79	53.47	6,628.1	571.7	748.2	941.3	0.00	0.00	0.00
6,800.0	8.79	53.47	6,726.9	580.8	760.4	956.6	0.00	0.00	0.00
Fort Union									
6,826.4	8.79	53.47	6,753.0	583.2	763.7	960.6	0.00	0.00	0.00
6,900.0	8.79	53.47	6,825.7	589.9	772.7	971.9	0.00	0.00	0.00
7,000.0	8.79	53.47	6,924.5	599.0	785.0	987.1	0.00	0.00	0.00
7,100.0	8.79	53.47	7,023.4	608.1	797.3	1,002.4	0.00	0.00	0.00
7,200.0	8.79	53.47	7,122.2	617.2	809.6	1,017.7	0.00	0.00	0.00
7,300.0	8.79	53.47	7,221.0	626.3	821.9	1,033.0	0.00	0.00	0.00
7,400.0	8.79	53.47	7,319.8	635.4	834.1	1,048.2	0.00	0.00	0.00
7,500.0	8.79	53.47	7,418.7	644.5	846.4	1,063.5	0.00	0.00	0.00
7,600.0	8.79	53.47	7,517.5	653.5	858.7	1,078.8	0.00	0.00	0.00
7,700.0	8.79	53.47	7,616.3	662.6	871.0	1,094.1	0.00	0.00	0.00
7,800.0	8.79	53.47	7,715.1	671.7	883.3	1,109.3	0.00	0.00	0.00
7,900.0	8.79	53.47	7,814.0	680.8	895.6	1,124.6	0.00	0.00	0.00
8,000.0	8.79	53.47	7,912.8	689.9	907.8	1,139.9	0.00	0.00	0.00
8,100.0	8.79	53.47	8,011.6	699.0	920.1	1,155.2	0.00	0.00	0.00
8,200.0	8.79	53.47	8,110.4	708.1	932.4	1,170.4	0.00	0.00	0.00
8,300.0	8.79	53.47	8,209.3	717.2	944.7	1,185.7	0.00	0.00	0.00
8,400.0	8.79	53.47	8,308.1	726.3	957.0	1,201.0	0.00	0.00	0.00
Drop 3° /100'									
8,467.8	8.79	53.47	8,375.1	732.5	965.3	1,211.4	0.00	0.00	0.00
8,500.0	7.83	53.47	8,406.9	735.3	969.0	1,216.0	3.00	-3.00	0.00
8,600.0	4.83	53.47	8,506.3	741.8	977.9	1,227.0	3.00	-3.00	0.00
8,700.0	1.83	53.47	8,606.1	745.3	982.5	1,232.8	3.00	-3.00	0.00
EOD @ Vertical / Build 1.5° / 100' - Ohio Creek / TOG									
8,760.9	0.00	0.00	8,667.0	745.9	983.3	1,233.8	3.00	-3.00	0.00
8,800.0	0.59	250.00	8,706.1	745.8	983.1	1,233.6	1.50	1.50	0.00

Database:	EDM 5000.1 Single User Db	Local Co-ordinate Reference:	Well ELU O13 FED 24A-13 496 - Slot ELU O13 FED 24A-13 496
Company:	Caerus Oil & Gas	TVD Reference:	RKB @ 8148.0usft (30')
Project:	Rio Blanco County, CO	MD Reference:	RKB @ 8148.0usft (30')
Site:	ELU O13 496 Pad	North Reference:	True
Well:	ELU O13 FED 24A-13 496	Survey Calculation Method:	Minimum Curvature
Wellbore:	Wellbore #1		
Design:	Design #1		

Planned Survey

Measured Depth (usft)	Inclination (°)	Azimuth (°)	Vertical Depth (usft)	+N/-S (usft)	+E/-W (usft)	Vertical Section (usft)	Dogleg Rate (°/100usft)	Build Rate (°/100usft)	Turn Rate (°/100usft)
EOB @ 1.37° Inc. / 250.00° Azm									
8,852.1	1.37	250.00	8,758.3	745.5	982.3	1,232.7	1.50	1.50	0.00
8,900.0	1.37	250.00	8,806.1	745.1	981.2	1,231.7	0.00	0.00	0.00
9,000.0	1.37	250.00	8,906.1	744.3	979.0	1,229.4	0.00	0.00	0.00
9,100.0	1.37	250.00	9,006.1	743.5	976.7	1,227.1	0.00	0.00	0.00
9,200.0	1.37	250.00	9,106.0	742.6	974.5	1,224.9	0.00	0.00	0.00
9,300.0	1.37	250.00	9,206.0	741.8	972.2	1,222.6	0.00	0.00	0.00
Williams Fork									
9,302.0	1.37	250.00	9,208.0	741.8	972.2	1,222.6	0.00	0.00	0.00
9,400.0	1.37	250.00	9,306.0	741.0	970.0	1,220.3	0.00	0.00	0.00
9,500.0	1.37	250.00	9,405.9	740.2	967.8	1,218.1	0.00	0.00	0.00
9,600.0	1.37	250.00	9,505.9	739.4	965.5	1,215.8	0.00	0.00	0.00
9,700.0	1.37	250.00	9,605.9	738.6	963.3	1,213.6	0.00	0.00	0.00
9,800.0	1.37	250.00	9,705.9	737.7	961.0	1,211.3	0.00	0.00	0.00
9,900.0	1.37	250.00	9,805.8	736.9	958.8	1,209.0	0.00	0.00	0.00
10,000.0	1.37	250.00	9,905.8	736.1	956.5	1,206.8	0.00	0.00	0.00
10,100.0	1.37	250.00	10,005.8	735.3	954.3	1,204.5	0.00	0.00	0.00
10,200.0	1.37	250.00	10,105.7	734.5	952.0	1,202.2	0.00	0.00	0.00
10,300.0	1.37	250.00	10,205.7	733.7	949.8	1,200.0	0.00	0.00	0.00
10,400.0	1.37	250.00	10,305.7	732.8	947.6	1,197.7	0.00	0.00	0.00
10,500.0	1.37	250.00	10,405.7	732.0	945.3	1,195.4	0.00	0.00	0.00
10,600.0	1.37	250.00	10,505.6	731.2	943.1	1,193.2	0.00	0.00	0.00
10,700.0	1.37	250.00	10,605.6	730.4	940.8	1,190.9	0.00	0.00	0.00
10,800.0	1.37	250.00	10,705.6	729.6	938.6	1,188.7	0.00	0.00	0.00
10,900.0	1.37	250.00	10,805.5	728.7	936.3	1,186.4	0.00	0.00	0.00
11,000.0	1.37	250.00	10,905.5	727.9	934.1	1,184.1	0.00	0.00	0.00
11,100.0	1.37	250.00	11,005.5	727.1	931.8	1,181.9	0.00	0.00	0.00
11,200.0	1.37	250.00	11,105.5	726.3	929.6	1,179.6	0.00	0.00	0.00
11,300.0	1.37	250.00	11,205.4	725.5	927.3	1,177.3	0.00	0.00	0.00
11,400.0	1.37	250.00	11,305.4	724.7	925.1	1,175.1	0.00	0.00	0.00
11,500.0	1.37	250.00	11,405.4	723.8	922.9	1,172.8	0.00	0.00	0.00
11,600.0	1.37	250.00	11,505.3	723.0	920.6	1,170.5	0.00	0.00	0.00
11,700.0	1.37	250.00	11,605.3	722.2	918.4	1,168.3	0.00	0.00	0.00
11,800.0	1.37	250.00	11,705.3	721.4	916.1	1,166.0	0.00	0.00	0.00
11,900.0	1.37	250.00	11,805.3	720.6	913.9	1,163.8	0.00	0.00	0.00
12,000.0	1.37	250.00	11,905.2	719.8	911.6	1,161.5	0.00	0.00	0.00
12,100.0	1.37	250.00	12,005.2	718.9	909.4	1,159.2	0.00	0.00	0.00
12,200.0	1.37	250.00	12,105.2	718.1	907.1	1,157.0	0.00	0.00	0.00
Cameo									
12,291.9	1.37	250.00	12,197.0	717.4	905.1	1,154.9	0.00	0.00	0.00
12,300.0	1.37	250.00	12,205.1	717.3	904.9	1,154.7	0.00	0.00	0.00
12,400.0	1.37	250.00	12,305.1	716.5	902.7	1,152.4	0.00	0.00	0.00
12,500.0	1.37	250.00	12,405.1	715.7	900.4	1,150.2	0.00	0.00	0.00
12,600.0	1.37	250.00	12,505.1	714.9	898.2	1,147.9	0.00	0.00	0.00
12,700.0	1.37	250.00	12,605.0	714.0	895.9	1,145.6	0.00	0.00	0.00
Rollins									
12,792.0	1.37	250.00	12,697.0	713.3	893.9	1,143.6	0.00	0.00	0.00
12,800.0	1.37	250.00	12,705.0	713.2	893.7	1,143.4	0.00	0.00	0.00
12,900.0	1.37	250.00	12,805.0	712.4	891.4	1,141.1	0.00	0.00	0.00
TD @ 12992.1' MD / 12897.0' TVD									
12,992.1	1.37	250.00	12,897.0	711.7	889.4	1,139.0	0.00	0.00	0.00

Database:	EDM 5000.1 Single User Db	Local Co-ordinate Reference:	Well ELU O13 FED 24A-13 496 - Slot ELU O13 FED 24A-13 496
Company:	Caerus Oil & Gas	TVD Reference:	RKB @ 8148.0usft (30')
Project:	Rio Blanco County, CO	MD Reference:	RKB @ 8148.0usft (30')
Site:	ELU O13 496 Pad	North Reference:	True
Well:	ELU O13 FED 24A-13 496	Survey Calculation Method:	Minimum Curvature
Wellbore:	Wellbore #1		
Design:	Design #1		

Design Targets

Target Name

- hit/miss target - Shape	Dip Angle (°)	Dip Dir. (°)	TVD (usft)	+N/-S (usft)	+E/-W (usft)	Northing (usft)	Easting (usft)	Latitude	Longitude
OHCR - 24A-13 - plan hits target center - Point	0.00	0.00	8,667.0	745.9	983.3	14,430,169.41	2,452,965.42	39.700749	-108.111442
PBHL - 24A-13 - plan hits target center - Ellipse (radii L100.0 W50.0 on 250.00 azi)	0.00	0.00	12,897.0	711.7	889.4	14,430,132.20	2,452,872.60	39.700655	-108.111776

Formations

Measured Depth (usft)	Vertical Depth (usft)	Name	Lithology	Dip (°)	Dip Direction (°)
4,094.3	4,053.0	Wasatch			
6,522.9	6,453.0	Wasatch G			
6,826.4	6,753.0	Fort Union			
8,760.9	8,667.0	Ohio Creek / TOG			
9,302.0	9,208.0	Williams Fork			
12,291.9	12,197.0	Cameo			
12,792.0	12,697.0	Rollins			

Plan Annotations

Measured Depth (usft)	Vertical Depth (usft)	Local Coordinates		Comment
		+N/-S (usft)	+E/-W (usft)	
325.0	325.0	0.0	0.0	Build 3° / 100'
491.7	491.5	7.3	0.0	EOB @ 5.00° Inc. / 0.00° Azm / Build 3° / 100'
727.0	725.3	28.3	14.5	EOB @ 8.79° Inc. / 53.47° Azm
8,467.8	8,375.1	732.5	965.3	Drop 3° / 100'
8,760.9	8,667.0	745.9	983.3	EOD @ Vertical / Build 1.5° / 100'
8,852.1	8,758.3	745.5	982.3	EOB @ 1.37° Inc. / 250.00° Azm
12,992.1	12,897.0	711.7	889.4	TD @ 12992.1' MD / 12897.0' TVD