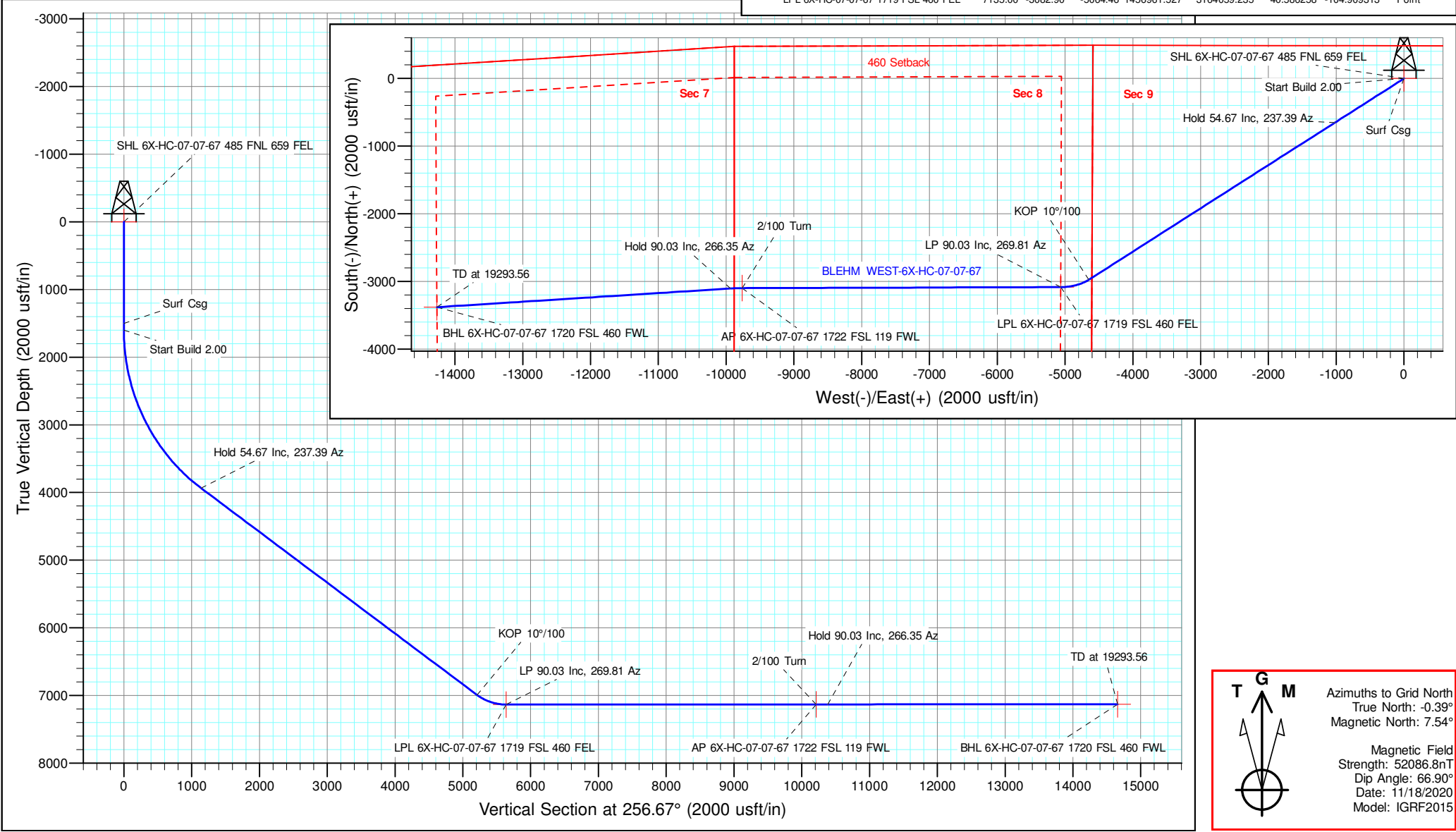


Well Name: <b>BLEHM WEST-6X-HC-07-07-67</b>	Project Name: <b>Sec. 9-T7N-R67W</b>	Pad Name: <b>BLEHM Pad</b>
--	---	-------------------------------

ANNOTATIONS									
MD	Inc	Azi	TVD	+N/-S	+E/-W	VSec	Departure	Annotation	
1500.00	0.00	0.00	1500.00	0.00	0.00	0.00	0.00	Surf Csg	
1600.00	0.00	0.00	1600.00	0.00	0.00	0.00	0.00	Start Build 2.00	
4333.50	54.67	237.39	3937.20	-651.01	-1017.73	1140.39	1208.13	Hold 54.67 Inc, 237.39 Az	
9617.39	54.67	237.39	6992.78	-2973.89	-4649.13	5209.49	5518.91	KOP 10°/100	
10082.39	90.03	269.81	7135.00	-3082.90	-5064.46	5638.76	5953.82	LP 90.03 Inc, 269.81 Az	
14779.92	90.03	269.81	7132.45	-3098.08	-9761.96	10213.23	10651.35	2/100 Turn	
14953.05	90.03	266.35	7132.36	-3103.87	-9934.97	10382.91	10824.48	Hold 90.03 Inc, 266.35 Az	
19293.56	90.03	266.35	7130.00	-3380.02	-14266.69	14661.62	15164.99	TD at 19293.56	

Geodetic Datum:	Elevation:
North American Datum 1983 US State Plane 1983, Colorado Northern Zone	Ground Elevation: 5088.00 KB Elevation: WELL @ 5115.00usft (Original Well Elev)

DESIGN TARGET DETAILS									
Name	TVD	+N/-S	+E/-W	Northing	Easting	Latitude	Longitude	Shape Point	
SHL 6X-HC-07-07-67 485 FNL 659 FEL	0.00	0.00	0.00	1460044.428	3169123.696	40.594626	-104.891003		
BHL 6X-HC-07-07-67 1720 FSL 460 FWL	7130.00	-3380.02	-14266.69	1456664.410	3154857.003	40.585606	-104.942451	Point	
AP 6X-HC-07-07-67 1722 FSL 119 FWL	7132.45	-3098.08	-9761.96	1456946.349	3159361.732	40.586301	-104.926226	Point	
LPL 6X-HC-07-07-67 1719 FSL 460 FEL	7135.00	-3082.90	-5064.46	1456961.527	3164059.235	40.586258	-104.909313	Point	



# NICKEL ROAD

O P E R A T I N G

## **Nickel Road Operating**

**Sec. 9-T7N-R67W**

**BLEHM Pad**

**BLEHM WEST-6X-HC-07-07-67**

**Wellbore #1**

**Plan: Design #1**

## **Standard Planning Report - Geographic**

**19 November, 2020**

<b>Database:</b>	EDM 5000.15 Single User Db	<b>Local Co-ordinate Reference:</b>	Well BLEHM WEST-6X-HC-07-07-67
<b>Company:</b>	Nickel Road Operating	<b>TVD Reference:</b>	WELL @ 5115.00usft (Original Well Elev)
<b>Project:</b>	Sec. 9-T7N-R67W	<b>MD Reference:</b>	WELL @ 5115.00usft (Original Well Elev)
<b>Site:</b>	BLEHM Pad	<b>North Reference:</b>	Grid
<b>Well:</b>	BLEHM WEST-6X-HC-07-07-67	<b>Survey Calculation Method:</b>	Minimum Curvature
<b>Wellbore:</b>	Wellbore #1		
<b>Design:</b>	Design #1		

<b>Project</b>	Sec. 9-T7N-R67W, Weld County, CO		
<b>Map System:</b>	US State Plane 1983	<b>System Datum:</b>	Mean Sea Level
<b>Geo Datum:</b>	North American Datum 1983		
<b>Map Zone:</b>	Colorado Northern Zone		

Site	BLEHM Pad				
Site Position:		Northing:	1,458,460.008 usft	Latitude:	40.590318
From:	Lat/Long	Easting:	3,166,936.305 usft	Longitude:	-104.898918
Position Uncertainty:	0.00 usft	Slot Radius:	13-3/16 "	Grid Convergence:	0.39

Well	BLEHM WEST-6X-HC-07-07-67					
Well Position	+N/-S	0.00 usft	Northing:	1,460,044.428 usft	Latitude:	40.594626
	+E/-W	0.00 usft	Easting:	3,169,123.696 usft	Longitude:	-104.891003
Position Uncertainty		0.00 usft	Wellhead Elevation:		Ground Level:	5,088.00 usft

<b>Wellbore</b>	Wellbore #1				
<b>Magnetics</b>	<b>Model Name</b>	<b>Sample Date</b>	<b>Declination (°)</b>	<b>Dip Angle (°)</b>	<b>Field Strength (nT)</b>
	IGRF2015	11/18/2020	7.93	66.90	52,086.75903814

<b>Design</b>	Design #1			
<b>Audit Notes:</b>				
<b>Version:</b>	<b>Phase:</b>	PLAN	<b>Tie On Depth:</b>	0.00
<b>Vertical Section:</b>	<b>Depth From (TVD) (usft)</b>	<b>+N/-S (usft)</b>	<b>+E/-W (usft)</b>	<b>Direction (°)</b>
	0.00	0.00	0.00	256.67

<b>Plan Survey Tool Program</b>	<b>Date</b>	11/19/2020		
<b>Depth From (usft)</b>	<b>Depth To (usft)</b>	<b>Survey (Wellbore)</b>	<b>Tool Name</b>	<b>Remarks</b>
1	0.00	19,293.48 Design #1 (Wellbore #1)	MWD	
			OWSG MWD - Standard	

<b>Plan Sections</b>										
<b>Measured Depth (usft)</b>	<b>Inclination (°)</b>	<b>Azimuth (°)</b>	<b>Vertical Depth (usft)</b>	<b>+N/-S (usft)</b>	<b>+E/-W (usft)</b>	<b>Dogleg Rate (°/100usft)</b>	<b>Build Rate (°/100usft)</b>	<b>Turn Rate (°/100usft)</b>	<b>TFO (°)</b>	<b>Target</b>
0.00	0.00	0.00	0.00	0.00	0.00	0.00	0.00	0.00	0.00	
1,600.00	0.00	0.00	1,600.00	0.00	0.00	0.00	0.00	0.00	0.00	
4,333.50	54.67	237.39	3,937.20	-651.01	-1,017.73	2.00	2.00	0.00	237.39	
9,617.39	54.67	237.39	6,992.78	-2,973.89	-4,649.13	0.00	0.00	0.00	0.00	
10,082.39	90.03	269.81	7,135.00	-3,082.90	-5,064.46	10.00	7.60	6.97	47.66	LPL 6X-HC-07-07-67
14,779.92	90.03	269.81	7,132.45	-3,098.08	-9,761.96	0.00	0.00	0.00	0.00	
14,953.05	90.03	266.35	7,132.36	-3,103.87	-9,934.97	2.00	0.00	-2.00	-90.00	
19,293.56	90.03	266.35	7,130.00	-3,380.02	-14,266.69	0.00	0.00	0.00	0.00	BHL 6X-HC-07-07-67

<b>Database:</b>	EDM 5000.15 Single User Db	<b>Local Co-ordinate Reference:</b>	Well BLEHM WEST-6X-HC-07-07-67
<b>Company:</b>	Nickel Road Operating	<b>TVD Reference:</b>	WELL @ 5115.00usft (Original Well Elev)
<b>Project:</b>	Sec. 9-T7N-R67W	<b>MD Reference:</b>	WELL @ 5115.00usft (Original Well Elev)
<b>Site:</b>	BLEHM Pad	<b>North Reference:</b>	Grid
<b>Well:</b>	BLEHM WEST-6X-HC-07-07-67	<b>Survey Calculation Method:</b>	Minimum Curvature
<b>Wellbore:</b>	Wellbore #1		
<b>Design:</b>	Design #1		

Planned Survey									
Measured Depth (usft)	Inclination (°)	Azimuth (°)	Vertical Depth (usft)	+N/-S (usft)	+E/-W (usft)	Map Northing (usft)	Map Easting (usft)	Latitude	Longitude
0.00	0.00	0.00	0.00	0.00	0.00	1,460,044.428	3,169,123.696	40.594626	-104.891003
<b>SHL 6X-HC-07-07-67 485 FNL 659 FEL</b>									
100.00	0.00	0.00	100.00	0.00	0.00	1,460,044.428	3,169,123.696	40.594626	-104.891003
200.00	0.00	0.00	200.00	0.00	0.00	1,460,044.428	3,169,123.696	40.594626	-104.891003
300.00	0.00	0.00	300.00	0.00	0.00	1,460,044.428	3,169,123.696	40.594626	-104.891003
400.00	0.00	0.00	400.00	0.00	0.00	1,460,044.428	3,169,123.696	40.594626	-104.891003
500.00	0.00	0.00	500.00	0.00	0.00	1,460,044.428	3,169,123.696	40.594626	-104.891003
600.00	0.00	0.00	600.00	0.00	0.00	1,460,044.428	3,169,123.696	40.594626	-104.891003
700.00	0.00	0.00	700.00	0.00	0.00	1,460,044.428	3,169,123.696	40.594626	-104.891003
800.00	0.00	0.00	800.00	0.00	0.00	1,460,044.428	3,169,123.696	40.594626	-104.891003
900.00	0.00	0.00	900.00	0.00	0.00	1,460,044.428	3,169,123.696	40.594626	-104.891003
1,000.00	0.00	0.00	1,000.00	0.00	0.00	1,460,044.428	3,169,123.696	40.594626	-104.891003
1,100.00	0.00	0.00	1,100.00	0.00	0.00	1,460,044.428	3,169,123.696	40.594626	-104.891003
1,200.00	0.00	0.00	1,200.00	0.00	0.00	1,460,044.428	3,169,123.696	40.594626	-104.891003
1,300.00	0.00	0.00	1,300.00	0.00	0.00	1,460,044.428	3,169,123.696	40.594626	-104.891003
1,400.00	0.00	0.00	1,400.00	0.00	0.00	1,460,044.428	3,169,123.696	40.594626	-104.891003
1,500.00	0.00	0.00	1,500.00	0.00	0.00	1,460,044.428	3,169,123.696	40.594626	-104.891003
<b>Surf Csg</b>									
1,600.00	0.00	0.00	1,600.00	0.00	0.00	1,460,044.428	3,169,123.696	40.594626	-104.891003
<b>Start Build 2.00</b>									
1,700.00	2.00	237.39	1,699.98	-0.94	-1.47	1,460,043.487	3,169,122.226	40.594624	-104.891009
1,800.00	4.00	237.39	1,799.84	-3.76	-5.88	1,460,040.667	3,169,117.818	40.594616	-104.891025
1,900.00	6.00	237.39	1,899.45	-8.46	-13.22	1,460,035.971	3,169,110.476	40.594603	-104.891051
2,000.00	8.00	237.39	1,998.70	-15.02	-23.49	1,460,029.405	3,169,100.210	40.594585	-104.891088
2,100.00	10.00	237.39	2,097.47	-23.45	-36.66	1,460,020.975	3,169,087.033	40.594562	-104.891136
2,200.00	12.00	237.39	2,195.62	-33.73	-52.74	1,460,010.694	3,169,070.960	40.594534	-104.891194
2,300.00	14.00	237.39	2,293.06	-45.85	-71.69	1,459,998.573	3,169,052.011	40.594502	-104.891263
2,400.00	16.00	237.39	2,389.64	-59.80	-93.49	1,459,984.627	3,169,030.210	40.594464	-104.891341
2,500.00	18.00	237.39	2,485.27	-75.55	-118.12	1,459,968.874	3,169,005.581	40.594421	-104.891430
2,600.00	20.00	237.39	2,579.82	-93.10	-145.54	1,459,951.331	3,168,978.157	40.594373	-104.891530
2,700.00	22.00	237.39	2,673.17	-112.41	-175.73	1,459,932.021	3,168,947.970	40.594321	-104.891639
2,800.00	24.00	237.39	2,765.21	-133.46	-208.64	1,459,910.968	3,168,915.056	40.594264	-104.891758
2,900.00	26.00	237.39	2,855.84	-156.23	-244.24	1,459,888.196	3,168,879.457	40.594202	-104.891887
3,000.00	28.00	237.39	2,944.94	-180.69	-282.48	1,459,863.734	3,168,841.214	40.594135	-104.892025
3,100.00	30.00	237.39	3,032.39	-206.82	-323.32	1,459,837.611	3,168,800.376	40.594064	-104.892173
3,200.00	32.00	237.39	3,118.11	-234.57	-366.70	1,459,809.859	3,168,756.992	40.593989	-104.892329
3,300.00	34.00	237.39	3,201.97	-263.92	-412.58	1,459,780.513	3,168,711.114	40.593909	-104.892495
3,400.00	36.00	237.39	3,283.88	-294.82	-460.90	1,459,749.607	3,168,662.798	40.593826	-104.892670
3,500.00	38.00	237.39	3,363.74	-327.25	-511.59	1,459,717.179	3,168,612.104	40.593737	-104.892853
3,600.00	40.00	237.39	3,441.45	-361.16	-564.60	1,459,683.270	3,168,559.092	40.593645	-104.893045
3,700.00	42.00	237.39	3,516.92	-396.51	-619.87	1,459,647.920	3,168,503.828	40.593549	-104.893245
3,800.00	44.00	237.39	3,590.05	-433.26	-677.32	1,459,611.172	3,168,446.380	40.593450	-104.893453
3,900.00	46.00	237.39	3,660.76	-471.36	-736.88	1,459,573.071	3,168,386.816	40.593346	-104.893668
4,000.00	48.00	237.39	3,728.95	-510.76	-798.49	1,459,533.664	3,168,325.210	40.593239	-104.893891
4,100.00	50.00	237.39	3,794.56	-551.43	-862.06	1,459,492.998	3,168,261.636	40.593129	-104.894121
4,200.00	52.00	237.39	3,857.48	-593.30	-927.52	1,459,451.123	3,168,196.173	40.593015	-104.894358
4,300.00	54.00	237.39	3,917.66	-636.34	-994.80	1,459,408.090	3,168,128.900	40.592898	-104.894601
4,333.50	54.67	237.39	3,937.20	-651.01	-1,017.73	1,459,393.423	3,168,105.969	40.592858	-104.894684
<b>Hold 54.67 Inc, 237.39 Az</b>									
4,400.00	54.67	237.39	3,975.65	-680.24	-1,063.43	1,459,364.190	3,168,060.270	40.592779	-104.894849
4,500.00	54.67	237.39	4,033.48	-724.20	-1,132.15	1,459,320.229	3,167,991.544	40.592660	-104.895098
4,600.00	54.67	237.39	4,091.31	-768.16	-1,200.88	1,459,276.267	3,167,922.818	40.592540	-104.895346
4,700.00	54.67	237.39	4,149.14	-812.12	-1,269.60	1,459,232.305	3,167,854.092	40.592421	-104.895595
4,800.00	54.67	237.39	4,206.96	-856.08	-1,338.33	1,459,188.344	3,167,785.366	40.592301	-104.895843

<b>Database:</b>	EDM 5000.15 Single User Db	<b>Local Co-ordinate Reference:</b>	Well BLEHM WEST-6X-HC-07-07-67
<b>Company:</b>	Nickel Road Operating	<b>TVD Reference:</b>	WELL @ 5115.00usft (Original Well Elev)
<b>Project:</b>	Sec. 9-T7N-R67W	<b>MD Reference:</b>	WELL @ 5115.00usft (Original Well Elev)
<b>Site:</b>	BLEHM Pad	<b>North Reference:</b>	Grid
<b>Well:</b>	BLEHM WEST-6X-HC-07-07-67	<b>Survey Calculation Method:</b>	Minimum Curvature
<b>Wellbore:</b>	Wellbore #1		
<b>Design:</b>	Design #1		

Planned Survey									
Measured Depth (usft)	Inclination (°)	Azimuth (°)	Vertical Depth (usft)	+N/-S (usft)	+E/-W (usft)	Map Northing (usft)	Map Easting (usft)	Latitude	Longitude
4,900.00	54.67	237.39	4,264.79	-900.05	-1,407.06	1,459,144.382	3,167,716.640	40.592182	-104.896092
5,000.00	54.67	237.39	4,322.62	-944.01	-1,475.78	1,459,100.420	3,167,647.914	40.592063	-104.896340
5,100.00	54.67	237.39	4,380.45	-987.97	-1,544.51	1,459,056.459	3,167,579.188	40.591943	-104.896589
5,200.00	54.67	237.39	4,438.28	-1,031.93	-1,613.23	1,459,012.497	3,167,510.462	40.591824	-104.896837
5,300.00	54.67	237.39	4,496.11	-1,075.89	-1,681.96	1,458,968.535	3,167,441.736	40.591704	-104.897086
5,400.00	54.67	237.39	4,553.93	-1,119.85	-1,750.69	1,458,924.574	3,167,373.010	40.591585	-104.897335
5,500.00	54.67	237.39	4,611.76	-1,163.82	-1,819.41	1,458,880.612	3,167,304.284	40.591466	-104.897583
5,600.00	54.67	237.39	4,669.59	-1,207.78	-1,888.14	1,458,836.650	3,167,235.558	40.591346	-104.897832
5,700.00	54.67	237.39	4,727.42	-1,251.74	-1,956.86	1,458,792.689	3,167,166.832	40.591227	-104.898080
5,800.00	54.67	237.39	4,785.25	-1,295.70	-2,025.59	1,458,748.727	3,167,098.107	40.591108	-104.898329
5,900.00	54.67	237.39	4,843.08	-1,339.66	-2,094.31	1,458,704.765	3,167,029.381	40.590988	-104.898577
6,000.00	54.67	237.39	4,900.90	-1,383.62	-2,163.04	1,458,660.804	3,166,960.655	40.590869	-104.898826
6,100.00	54.67	237.39	4,958.73	-1,427.59	-2,231.77	1,458,616.842	3,166,891.929	40.590749	-104.899074
6,200.00	54.67	237.39	5,016.56	-1,471.55	-2,300.49	1,458,572.880	3,166,823.203	40.590630	-104.899323
6,300.00	54.67	237.39	5,074.39	-1,515.51	-2,369.22	1,458,528.919	3,166,754.477	40.590511	-104.899571
6,400.00	54.67	237.39	5,132.22	-1,559.47	-2,437.94	1,458,484.957	3,166,685.751	40.590391	-104.899820
6,500.00	54.67	237.39	5,190.05	-1,603.43	-2,506.67	1,458,440.996	3,166,617.025	40.590272	-104.900068
6,600.00	54.67	237.39	5,247.87	-1,647.39	-2,575.40	1,458,397.034	3,166,548.299	40.590152	-104.900317
6,700.00	54.67	237.39	5,305.70	-1,691.36	-2,644.12	1,458,353.072	3,166,479.573	40.590033	-104.900565
6,800.00	54.67	237.39	5,363.53	-1,735.32	-2,712.85	1,458,309.111	3,166,410.847	40.589914	-104.900814
6,900.00	54.67	237.39	5,421.36	-1,779.28	-2,781.57	1,458,265.149	3,166,342.121	40.589794	-104.901062
7,000.00	54.67	237.39	5,479.19	-1,823.24	-2,850.30	1,458,221.187	3,166,273.395	40.589675	-104.901311
7,100.00	54.67	237.39	5,537.02	-1,867.20	-2,919.03	1,458,177.226	3,166,204.669	40.589555	-104.901559
7,200.00	54.67	237.39	5,594.84	-1,911.16	-2,987.75	1,458,133.264	3,166,135.944	40.589436	-104.901808
7,300.00	54.67	237.39	5,652.67	-1,955.13	-3,056.48	1,458,089.302	3,166,067.218	40.589317	-104.902056
7,400.00	54.67	237.39	5,710.50	-1,999.09	-3,125.20	1,458,045.341	3,165,998.492	40.589197	-104.902305
7,500.00	54.67	237.39	5,768.33	-2,043.05	-3,193.93	1,458,001.379	3,165,929.766	40.589078	-104.902553
7,600.00	54.67	237.39	5,826.16	-2,087.01	-3,262.66	1,457,957.417	3,165,861.040	40.588959	-104.902802
7,700.00	54.67	237.39	5,883.99	-2,130.97	-3,331.38	1,457,913.456	3,165,792.314	40.588839	-104.903051
7,800.00	54.67	237.39	5,941.82	-2,174.93	-3,400.11	1,457,869.494	3,165,723.588	40.588720	-104.903299
7,900.00	54.67	237.39	5,999.64	-2,218.90	-3,468.83	1,457,825.532	3,165,654.862	40.588600	-104.903548
8,000.00	54.67	237.39	6,057.47	-2,262.86	-3,537.56	1,457,781.571	3,165,586.136	40.588481	-104.903796
8,100.00	54.67	237.39	6,115.30	-2,306.82	-3,606.29	1,457,737.609	3,165,517.410	40.588362	-104.904045
8,200.00	54.67	237.39	6,173.13	-2,350.78	-3,675.01	1,457,693.647	3,165,448.684	40.588242	-104.904293
8,300.00	54.67	237.39	6,230.96	-2,394.74	-3,743.74	1,457,649.686	3,165,379.958	40.588123	-104.904542
8,400.00	54.67	237.39	6,288.79	-2,438.70	-3,812.46	1,457,605.724	3,165,311.232	40.588003	-104.904790
8,500.00	54.67	237.39	6,346.61	-2,482.67	-3,881.19	1,457,561.762	3,165,242.507	40.587884	-104.905039
8,600.00	54.67	237.39	6,404.44	-2,526.63	-3,949.92	1,457,517.801	3,165,173.781	40.587765	-104.905287
8,700.00	54.67	237.39	6,462.27	-2,570.59	-4,018.64	1,457,473.839	3,165,105.055	40.587645	-104.905536
8,800.00	54.67	237.39	6,520.10	-2,614.55	-4,087.37	1,457,429.878	3,165,036.329	40.587526	-104.905784
8,900.00	54.67	237.39	6,577.93	-2,658.51	-4,156.09	1,457,385.916	3,164,967.603	40.587406	-104.906033
9,000.00	54.67	237.39	6,635.76	-2,702.47	-4,224.82	1,457,341.954	3,164,898.877	40.587287	-104.906281
9,100.00	54.67	237.39	6,693.58	-2,746.44	-4,293.54	1,457,297.993	3,164,830.151	40.587168	-104.906530
9,200.00	54.67	237.39	6,751.41	-2,790.40	-4,362.27	1,457,254.031	3,164,761.425	40.587048	-104.906778
9,300.00	54.67	237.39	6,809.24	-2,834.36	-4,431.00	1,457,210.069	3,164,692.699	40.586929	-104.907027
9,400.00	54.67	237.39	6,867.07	-2,878.32	-4,499.72	1,457,166.108	3,164,623.973	40.586809	-104.907275
9,500.00	54.67	237.39	6,924.90	-2,922.28	-4,568.45	1,457,122.146	3,164,555.247	40.586690	-104.907524
9,600.00	54.67	237.39	6,982.73	-2,966.24	-4,637.17	1,457,078.184	3,164,486.521	40.586570	-104.907772
9,617.39	54.67	237.39	6,992.78	-2,973.89	-4,649.13	1,457,070.538	3,164,474.567	40.586550	-104.907815
KOP 10°/100									
9,700.00	60.44	244.41	7,037.12	-3,007.63	-4,710.02	1,457,036.802	3,164,413.674	40.586458	-104.908035
9,800.00	67.85	251.87	7,080.75	-3,040.91	-4,793.47	1,457,003.522	3,164,330.224	40.586368	-104.908337
9,900.00	75.57	258.58	7,112.13	-3,064.96	-4,885.18	1,456,979.464	3,164,238.514	40.586304	-104.908667
10,000.00	83.47	264.83	7,130.33	-3,079.07	-4,982.37	1,456,965.358	3,164,141.330	40.586267	-104.909018

<b>Database:</b>	EDM 5000.15 Single User Db	<b>Local Co-ordinate Reference:</b>	Well BLEHM WEST-6X-HC-07-07-67
<b>Company:</b>	Nickel Road Operating	<b>TVD Reference:</b>	WELL @ 5115.00usft (Original Well Elev)
<b>Project:</b>	Sec. 9-T7N-R67W	<b>MD Reference:</b>	WELL @ 5115.00usft (Original Well Elev)
<b>Site:</b>	BLEHM Pad	<b>North Reference:</b>	Grid
<b>Well:</b>	BLEHM WEST-6X-HC-07-07-67	<b>Survey Calculation Method:</b>	Minimum Curvature
<b>Wellbore:</b>	Wellbore #1		
<b>Design:</b>	Design #1		

Planned Survey									
Measured Depth (usft)	Inclination (°)	Azimuth (°)	Vertical Depth (usft)	+N/-S (usft)	+E/-W (usft)	Map Northing (usft)	Map Easting (usft)	Latitude	Longitude
10,082.39	90.03	269.81	7,135.00	-3,082.90	-5,064.46	1,456,961.527	3,164,059.235	40.586258	-104.909313
LP 90.03 Inc, 269.81 Az - LPL 6X-HC-07-07-67 1719 FSL 460 FEL									
10,100.00	90.03	269.81	7,134.99	-3,082.96	-5,082.07	1,456,961.470	3,164,041.623	40.586258	-104.909377
10,200.00	90.03	269.81	7,134.94	-3,083.28	-5,182.07	1,456,961.147	3,163,941.624	40.586259	-104.909737
10,300.00	90.03	269.81	7,134.88	-3,083.60	-5,282.07	1,456,960.824	3,163,841.624	40.586260	-104.910097
10,400.00	90.03	269.81	7,134.83	-3,083.93	-5,382.07	1,456,960.501	3,163,741.625	40.586261	-104.910457
10,500.00	90.03	269.81	7,134.77	-3,084.25	-5,482.07	1,456,960.178	3,163,641.625	40.586262	-104.910817
10,600.00	90.03	269.81	7,134.72	-3,084.57	-5,582.07	1,456,959.854	3,163,541.626	40.586263	-104.911177
10,700.00	90.03	269.81	7,134.66	-3,084.90	-5,682.07	1,456,959.531	3,163,441.627	40.586264	-104.911537
10,800.00	90.03	269.81	7,134.61	-3,085.22	-5,782.07	1,456,959.208	3,163,341.627	40.586265	-104.911897
10,900.00	90.03	269.81	7,134.56	-3,085.54	-5,882.07	1,456,958.885	3,163,241.628	40.586266	-104.912257
11,000.00	90.03	269.81	7,134.50	-3,085.87	-5,982.07	1,456,958.562	3,163,141.628	40.586267	-104.912617
11,100.00	90.03	269.81	7,134.45	-3,086.19	-6,082.07	1,456,958.239	3,163,041.629	40.586268	-104.912977
11,200.00	90.03	269.81	7,134.39	-3,086.51	-6,182.07	1,456,957.916	3,162,941.629	40.586269	-104.913337
11,300.00	90.03	269.81	7,134.34	-3,086.84	-6,282.07	1,456,957.593	3,162,841.630	40.586269	-104.913697
11,400.00	90.03	269.81	7,134.28	-3,087.16	-6,382.07	1,456,957.270	3,162,741.630	40.586270	-104.914057
11,500.00	90.03	269.81	7,134.23	-3,087.48	-6,482.07	1,456,956.946	3,162,641.631	40.586271	-104.914417
11,600.00	90.03	269.81	7,134.18	-3,087.80	-6,582.06	1,456,956.623	3,162,541.631	40.586272	-104.914777
11,700.00	90.03	269.81	7,134.12	-3,088.13	-6,682.06	1,456,956.300	3,162,441.632	40.586273	-104.915137
11,800.00	90.03	269.81	7,134.07	-3,088.45	-6,782.06	1,456,955.977	3,162,341.633	40.586274	-104.915497
11,900.00	90.03	269.81	7,134.01	-3,088.77	-6,882.06	1,456,955.654	3,162,241.633	40.586275	-104.915857
12,000.00	90.03	269.81	7,133.96	-3,089.10	-6,982.06	1,456,955.331	3,162,141.634	40.586276	-104.916217
12,100.00	90.03	269.81	7,133.91	-3,089.42	-7,082.06	1,456,955.008	3,162,041.634	40.586277	-104.916577
12,200.00	90.03	269.81	7,133.85	-3,089.74	-7,182.06	1,456,954.685	3,161,941.635	40.586278	-104.916938
12,300.00	90.03	269.81	7,133.80	-3,090.07	-7,282.06	1,456,954.362	3,161,841.635	40.586279	-104.917298
12,400.00	90.03	269.81	7,133.74	-3,090.39	-7,382.06	1,456,954.039	3,161,741.636	40.586280	-104.917658
12,500.00	90.03	269.81	7,133.69	-3,090.71	-7,482.06	1,456,953.715	3,161,641.636	40.586281	-104.918018
12,600.00	90.03	269.81	7,133.63	-3,091.04	-7,582.06	1,456,953.392	3,161,541.637	40.586281	-104.918378
12,700.00	90.03	269.81	7,133.58	-3,091.36	-7,682.06	1,456,953.069	3,161,441.637	40.586282	-104.918738
12,800.00	90.03	269.81	7,133.53	-3,091.68	-7,782.06	1,456,952.746	3,161,341.638	40.586283	-104.919098
12,900.00	90.03	269.81	7,133.47	-3,092.01	-7,882.06	1,456,952.423	3,161,241.638	40.586284	-104.919458
13,000.00	90.03	269.81	7,133.42	-3,092.33	-7,982.06	1,456,952.100	3,161,141.639	40.586285	-104.919818
13,100.00	90.03	269.81	7,133.36	-3,092.65	-8,082.06	1,456,951.777	3,161,041.640	40.586286	-104.920178
13,200.00	90.03	269.81	7,133.31	-3,092.97	-8,182.06	1,456,951.454	3,160,941.640	40.586287	-104.920538
13,300.00	90.03	269.81	7,133.25	-3,093.30	-8,282.06	1,456,951.131	3,160,841.641	40.586288	-104.920898
13,400.00	90.03	269.81	7,133.20	-3,093.62	-8,382.05	1,456,950.807	3,160,741.641	40.586289	-104.921258
13,500.00	90.03	269.81	7,133.15	-3,093.94	-8,482.05	1,456,950.484	3,160,641.642	40.586290	-104.921618
13,600.00	90.03	269.81	7,133.09	-3,094.27	-8,582.05	1,456,950.161	3,160,541.642	40.586291	-104.921978
13,700.00	90.03	269.81	7,133.04	-3,094.59	-8,682.05	1,456,949.838	3,160,441.643	40.586291	-104.922338
13,800.00	90.03	269.81	7,132.98	-3,094.91	-8,782.05	1,456,949.515	3,160,341.643	40.586292	-104.922698
13,900.00	90.03	269.81	7,132.93	-3,095.24	-8,882.05	1,456,949.192	3,160,241.644	40.586293	-104.923058
14,000.00	90.03	269.81	7,132.87	-3,095.56	-8,982.05	1,456,948.869	3,160,141.644	40.586294	-104.923418
14,100.00	90.03	269.81	7,132.82	-3,095.88	-9,082.05	1,456,948.546	3,160,041.645	40.586295	-104.923778
14,200.00	90.03	269.81	7,132.77	-3,096.21	-9,182.05	1,456,948.223	3,159,941.646	40.586296	-104.924138
14,300.00	90.03	269.81	7,132.71	-3,096.53	-9,282.05	1,456,947.900	3,159,841.646	40.586297	-104.924498
14,400.00	90.03	269.81	7,132.66	-3,096.85	-9,382.05	1,456,947.576	3,159,741.647	40.586298	-104.924858
14,500.00	90.03	269.81	7,132.60	-3,097.17	-9,482.05	1,456,947.253	3,159,641.647	40.586299	-104.925218
14,600.00	90.03	269.81	7,132.55	-3,097.50	-9,582.05	1,456,946.930	3,159,541.648	40.586299	-104.925578
14,700.00	90.03	269.81	7,132.49	-3,097.82	-9,682.05	1,456,946.607	3,159,441.648	40.586300	-104.925939
14,779.92	90.03	269.81	7,132.45	-3,098.08	-9,761.96	1,456,946.349	3,159,361.732	40.586301	-104.926226
2/100 Turn - AP 6X-HC-07-07-67 1722 FSL 119 FWL									
14,800.00	90.03	269.41	7,132.44	-3,098.21	-9,782.05	1,456,946.214	3,159,341.649	40.586301	-104.926299
14,900.00	90.03	267.41	7,132.38	-3,100.98	-9,882.00	1,456,943.445	3,159,241.693	40.586295	-104.926659

<b>Database:</b>	EDM 5000.15 Single User Db	<b>Local Co-ordinate Reference:</b>	Well BLEHM WEST-6X-HC-07-07-67
<b>Company:</b>	Nickel Road Operating	<b>TVD Reference:</b>	WELL @ 5115.00usft (Original Well Elev)
<b>Project:</b>	Sec. 9-T7N-R67W	<b>MD Reference:</b>	WELL @ 5115.00usft (Original Well Elev)
<b>Site:</b>	BLEHM Pad	<b>North Reference:</b>	Grid
<b>Well:</b>	BLEHM WEST-6X-HC-07-07-67	<b>Survey Calculation Method:</b>	Minimum Curvature
<b>Wellbore:</b>	Wellbore #1		
<b>Design:</b>	Design #1		

Planned Survey										
Measured			Vertical			Map				
Depth	Inclination	Azimuth	Depth	+N/-S	+E/-W	Northing	Easting		Latitude	Longitude
(usft)	(°)	(°)	(usft)	(usft)	(usft)	(usft)	(usft)			
14,953.05	90.03	266.35	7,132.36	-3,103.87	-9,934.97	1,456,940.560	3,159,188.725		40.586288	-104.926849
Hold 90.03 Inc, 266.35 Az										
15,000.00	90.03	266.35	7,132.33	-3,106.86	-9,981.83	1,456,937.573	3,159,141.867		40.586281	-104.927018
15,100.00	90.03	266.35	7,132.28	-3,113.22	-10,081.63	1,456,931.211	3,159,042.070		40.586265	-104.927378
15,200.00	90.03	266.35	7,132.22	-3,119.58	-10,181.42	1,456,924.848	3,158,942.272		40.586250	-104.927737
15,300.00	90.03	266.35	7,132.17	-3,125.94	-10,281.22	1,456,918.486	3,158,842.475		40.586234	-104.928096
15,400.00	90.03	266.35	7,132.11	-3,132.30	-10,381.02	1,456,912.124	3,158,742.677		40.586218	-104.928456
15,500.00	90.03	266.35	7,132.06	-3,138.67	-10,480.82	1,456,905.762	3,158,642.880		40.586202	-104.928815
15,600.00	90.03	266.35	7,132.00	-3,145.03	-10,580.61	1,456,899.400	3,158,543.083		40.586187	-104.929175
15,700.00	90.03	266.35	7,131.95	-3,151.39	-10,680.41	1,456,893.038	3,158,443.285		40.586171	-104.929534
15,800.00	90.03	266.35	7,131.90	-3,157.75	-10,780.21	1,456,886.676	3,158,343.488		40.586155	-104.929894
15,900.00	90.03	266.35	7,131.84	-3,164.11	-10,880.01	1,456,880.313	3,158,243.690		40.586140	-104.930253
16,000.00	90.03	266.35	7,131.79	-3,170.48	-10,979.80	1,456,873.951	3,158,143.893		40.586124	-104.930613
16,100.00	90.03	266.35	7,131.73	-3,176.84	-11,079.60	1,456,867.589	3,158,044.096		40.586108	-104.930972
16,200.00	90.03	266.35	7,131.68	-3,183.20	-11,179.40	1,456,861.227	3,157,944.298		40.586093	-104.931331
16,300.00	90.03	266.35	7,131.63	-3,189.56	-11,279.20	1,456,854.865	3,157,844.501		40.586077	-104.931691
16,400.00	90.03	266.35	7,131.57	-3,195.93	-11,378.99	1,456,848.503	3,157,744.704		40.586061	-104.932050
16,500.00	90.03	266.35	7,131.52	-3,202.29	-11,478.79	1,456,842.140	3,157,644.906		40.586045	-104.932410
16,600.00	90.03	266.35	7,131.46	-3,208.65	-11,578.59	1,456,835.778	3,157,545.109		40.586030	-104.932769
16,700.00	90.03	266.35	7,131.41	-3,215.01	-11,678.38	1,456,829.416	3,157,445.311		40.586014	-104.933129
16,800.00	90.03	266.35	7,131.35	-3,221.37	-11,778.18	1,456,823.054	3,157,345.514		40.585998	-104.933488
16,900.00	90.03	266.35	7,131.30	-3,227.74	-11,877.98	1,456,816.692	3,157,245.717		40.585983	-104.933848
17,000.00	90.03	266.35	7,131.25	-3,234.10	-11,977.78	1,456,810.330	3,157,145.919		40.585967	-104.934207
17,100.00	90.03	266.35	7,131.19	-3,240.46	-12,077.57	1,456,803.967	3,157,046.122		40.585951	-104.934567
17,200.00	90.03	266.35	7,131.14	-3,246.82	-12,177.37	1,456,797.605	3,156,946.324		40.585935	-104.934926
17,300.00	90.03	266.35	7,131.08	-3,253.18	-12,277.17	1,456,791.243	3,156,846.527		40.585920	-104.935285
17,400.00	90.03	266.35	7,131.03	-3,259.55	-12,376.97	1,456,784.881	3,156,746.730		40.585904	-104.935645
17,500.00	90.03	266.35	7,130.97	-3,265.91	-12,476.76	1,456,778.519	3,156,646.932		40.585888	-104.936004
17,600.00	90.03	266.35	7,130.92	-3,272.27	-12,576.56	1,456,772.157	3,156,547.135		40.585873	-104.936364
17,700.00	90.03	266.35	7,130.87	-3,278.63	-12,676.36	1,456,765.794	3,156,447.337		40.585857	-104.936723
17,800.00	90.03	266.35	7,130.81	-3,285.00	-12,776.16	1,456,759.432	3,156,347.540		40.585841	-104.937083
17,900.00	90.03	266.35	7,130.76	-3,291.36	-12,875.95	1,456,753.070	3,156,247.743		40.585825	-104.937442
18,000.00	90.03	266.35	7,130.70	-3,297.72	-12,975.75	1,456,746.708	3,156,147.945		40.585810	-104.937802
18,100.00	90.03	266.35	7,130.65	-3,304.08	-13,075.55	1,456,740.346	3,156,048.148		40.585794	-104.938161
18,200.00	90.03	266.35	7,130.59	-3,310.44	-13,175.35	1,456,733.984	3,155,948.350		40.585778	-104.938520
18,300.00	90.03	266.35	7,130.54	-3,316.81	-13,275.14	1,456,727.622	3,155,848.553		40.585762	-104.938880
18,400.00	90.03	266.35	7,130.49	-3,323.17	-13,374.94	1,456,721.259	3,155,748.756		40.585747	-104.939239
18,500.00	90.03	266.35	7,130.43	-3,329.53	-13,474.74	1,456,714.897	3,155,648.958		40.585731	-104.939599
18,600.00	90.03	266.35	7,130.38	-3,335.89	-13,574.54	1,456,708.535	3,155,549.161		40.585715	-104.939958
18,700.00	90.03	266.35	7,130.32	-3,342.26	-13,674.33	1,456,702.173	3,155,449.364		40.585700	-104.940318
18,800.00	90.03	266.35	7,130.27	-3,348.62	-13,774.13	1,456,695.811	3,155,349.566		40.585684	-104.940677
18,900.00	90.03	266.35	7,130.21	-3,354.98	-13,873.93	1,456,689.449	3,155,249.769		40.585668	-104.941037
19,000.00	90.03	266.35	7,130.16	-3,361.34	-13,973.73	1,456,683.086	3,155,149.971		40.585652	-104.941396
19,100.00	90.03	266.35	7,130.11	-3,367.70	-14,073.52	1,456,676.724	3,155,050.174		40.585637	-104.941756
19,200.00	90.03	266.35	7,130.05	-3,374.07	-14,173.32	1,456,670.362	3,154,950.377		40.585621	-104.942115
19,293.56	90.03	266.35	7,130.00	-3,380.02	-14,266.69	1,456,664.409	3,154,857.003		40.585606	-104.942451
TD at 19293.56 - BHL 6X-HC-07-07-67 1720 FSL 460 FWL										



<b>Database:</b>	EDM 5000.15 Single User Db	<b>Local Co-ordinate Reference:</b>	Well BLEHM WEST-6X-HC-07-07-67
<b>Company:</b>	Nickel Road Operating	<b>TVD Reference:</b>	WELL @ 5115.00usft (Original Well Elev)
<b>Project:</b>	Sec. 9-T7N-R67W	<b>MD Reference:</b>	WELL @ 5115.00usft (Original Well Elev)
<b>Site:</b>	BLEHM Pad	<b>North Reference:</b>	Grid
<b>Well:</b>	BLEHM WEST-6X-HC-07-07-67	<b>Survey Calculation Method:</b>	Minimum Curvature
<b>Wellbore:</b>	Wellbore #1		
<b>Design:</b>	Design #1		

Design Targets									
Target Name									
- hit/miss target	Dip Angle	Dip Dir.	TVD	+N/-S	+E/-W	Northing	Easting	Latitude	Longitude
- Shape	(°)	(°)	(usft)	(usft)	(usft)	(usft)	(usft)		
SHL 6X-HC-07-07-67 48	0.00	0.00	0.00	0.00	0.00	1,460,044.428	3,169,123.696	40.594626	-104.891003
- plan hits target center									
- Point									
BHL 6X-HC-07-07-67 17	0.00	0.00	7,130.00	-3,380.02	-14,266.69	1,456,664.409	3,154,857.003	40.585606	-104.942451
- plan hits target center									
- Point									
AP 6X-HC-07-07-67 172	0.00	0.00	7,132.45	-3,098.08	-9,761.96	1,456,946.349	3,159,361.732	40.586301	-104.926226
- plan hits target center									
- Point									
LPL 6X-HC-07-07-67 17	0.00	0.00	7,135.00	-3,082.90	-5,064.46	1,456,961.527	3,164,059.235	40.586258	-104.909313
- plan hits target center									
- Point									

Plan Annotations					
Measured Depth	Vertical Depth	Local Coordinates			
(usft)	(usft)	+N/-S	+E/-W	Comment	
		(usft)	(usft)		
1,500.00	1,500.00	0.00	0.00	Surf Csg	
1,600.00	1,600.00	0.00	0.00	Start Build 2.00	
4,333.50	3,937.20	-651.01	-1,017.73	Hold 54.67 Inc, 237.39 Az	
9,617.39	6,992.78	-2,973.89	-4,649.13	KOP 10°/100	
10,082.39	7,135.00	-3,082.90	-5,064.46	LP 90.03 Inc, 269.81 Az	
14,779.92	7,132.45	-3,098.08	-9,761.96	2/100 Turn	
14,953.05	7,132.36	-3,103.87	-9,934.97	Hold 90.03 Inc, 266.35 Az	
19,293.56	7,130.00	-3,380.02	-14,266.69	TD at 19293.56	