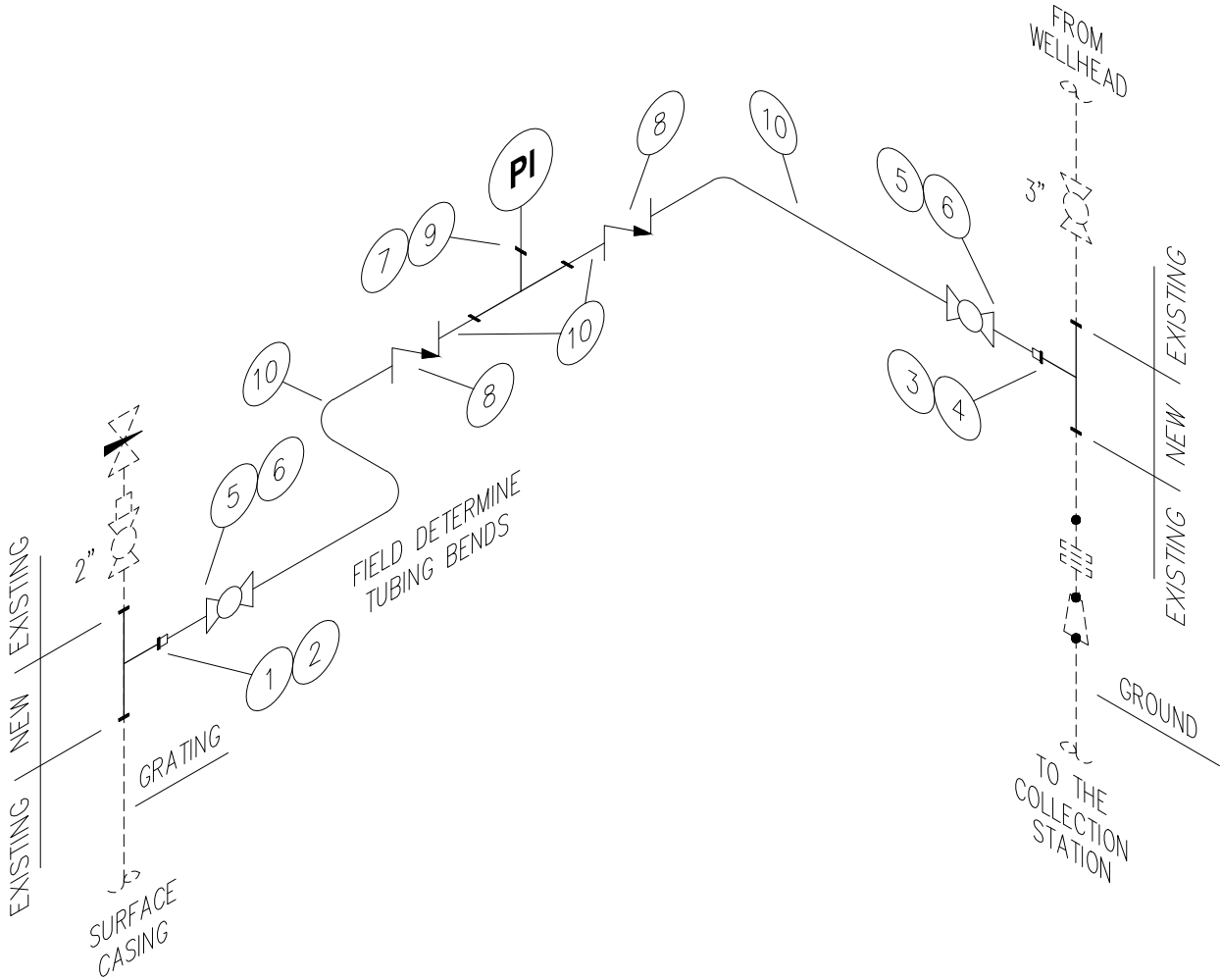


PIPING BILL OF MATERIALS

MARK	QTY	PIPE SIZE	SCH	DESCRIPTION
1	1	2"x2"x2"	3000#	TEE THRD
2	1	2"x1"	3000#	BUSHING THRD
3	1	3"x3"x3"	3000#	TEE THRD
4	1	3"x1"	3000#	BUSHING THRD
5	2	1"ø x 6"	160s	PIPE NIPPLE THRDxTHRD
6	2	1"	3000#	BALL VALVE THRD
7	1	1/2"x1/2"x1/2"	3000#	TEE THRD 316/316L SS
8	2	1/2"	3000#	PISTON CHECK VALVE
9	1	1/2"	3000#	PRESSURE INDICATOR W/ TATTLETALE
10	4	1/2"	3000#	SS TUBING W/ FITTINGS 316/316L



GENERAL NOTES:

1. FIELD VERIFY ALL DIMENSIONS

REVISIONS

AS-BUILT CDX WALKDOWN PER DRF-21007	TLD 01/20/21	✓	NLVX	△			△		
				△			△		
				△			△		

AS-BUILT



Chevron U.S.A. Inc.

RANGELY WEBER SAND UNIT
RIO BLANCO COUNTY, COLORADO

PRODUCTION WELLHEAD BRADENHEAD MODIFICATION – PIPING ISOMETRIC DIAGRAM

DR. TLD
ENG. NLVX

RANGE-ALL-PIP-ISO-MCB-0019

