

Well Pad Valve Legend

OS= oil tank sales valve
OF= oil tank fill valve
D= oil tank drain valve
WF= water tank fill valve
WL= water tank truck load out valve
WD= water tank drain valve
X= oil tank overflow isolation valve

Sales Phase

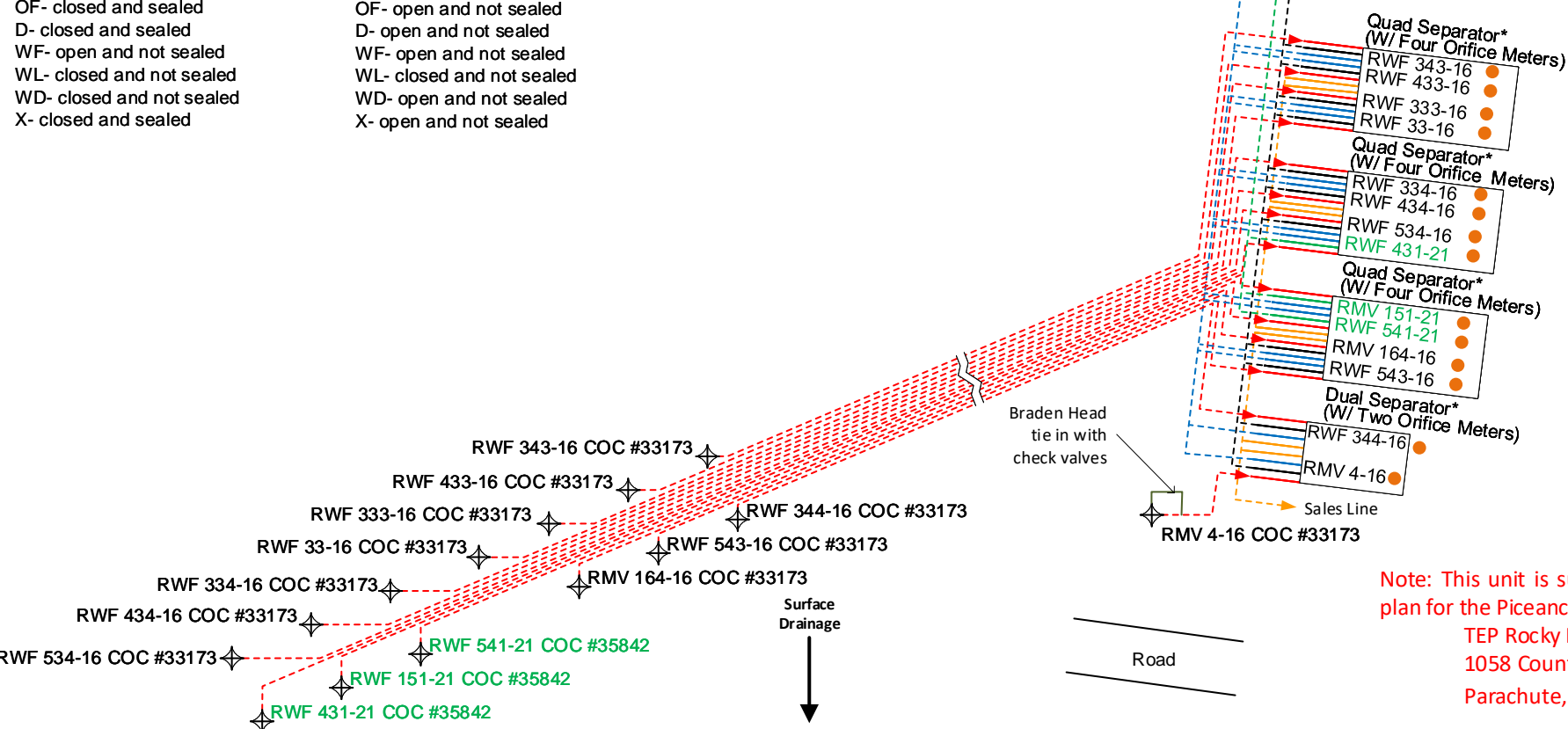
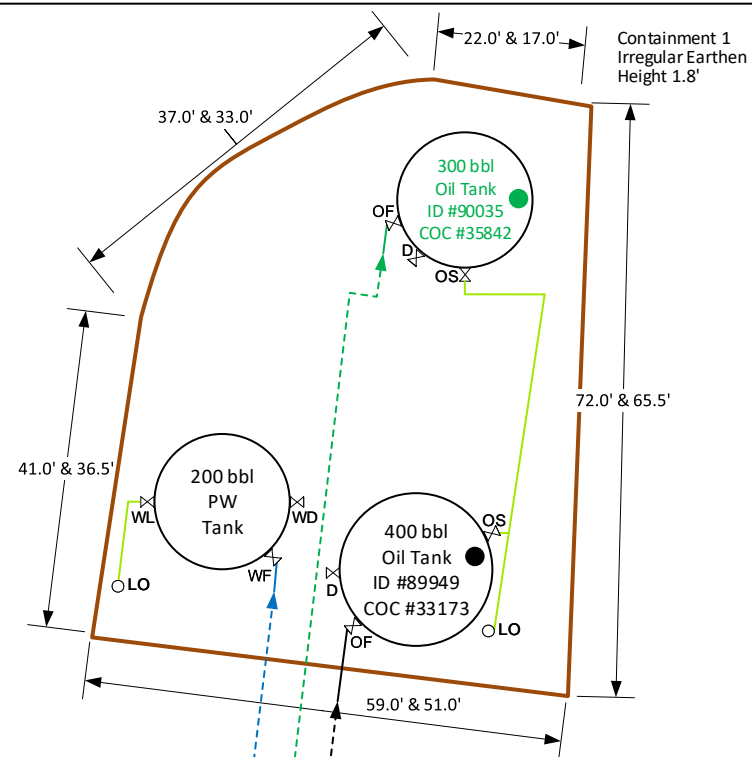
OS- open and not sealed
OF- closed and sealed
D- closed and sealed
WF- open and not sealed
WL- closed and not sealed
WD- closed and not sealed
X- closed and sealed

Production Phase

OS- closed and sealed
OF- open and not sealed
D- closed and sealed
WF- open and not sealed
WL- closed and not sealed
WD- closed and not sealed
X- open and not sealed

Drain Phase

OS- closed and sealed
OF- open and not sealed
D- open and not sealed
WF- open and not sealed
WL- closed and not sealed
WD- open and not sealed
X- open and not sealed



Ephemeral Stream
30'

Note: This unit is subject to the site security plan for the Piceance Basin. Plan is located at:
TEP Rocky Mountain, LLC
1058 County Road 215
Parachute, CO 81635

Note: Some measurements on drawing are estimates and not field verified.

Page: 1 of 2

DRAWN BY: DHR

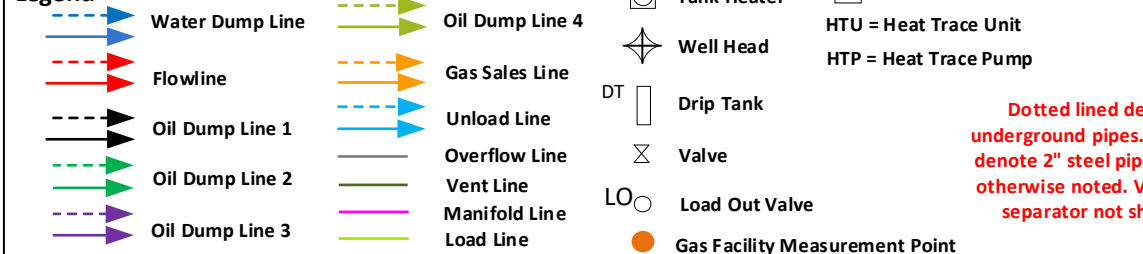
DATE: 1/5/2021

SCALE: NONE

Facility Diagram

TEP Rocky Mountain, LLC – North Rulison
RMV 4-16
Latitude: 39.519943 Longitude: -107.889334
SW/SE, Sec. 16, TS6S, R94W
COC# 35842, 33173
Garfield County, CO

Legend



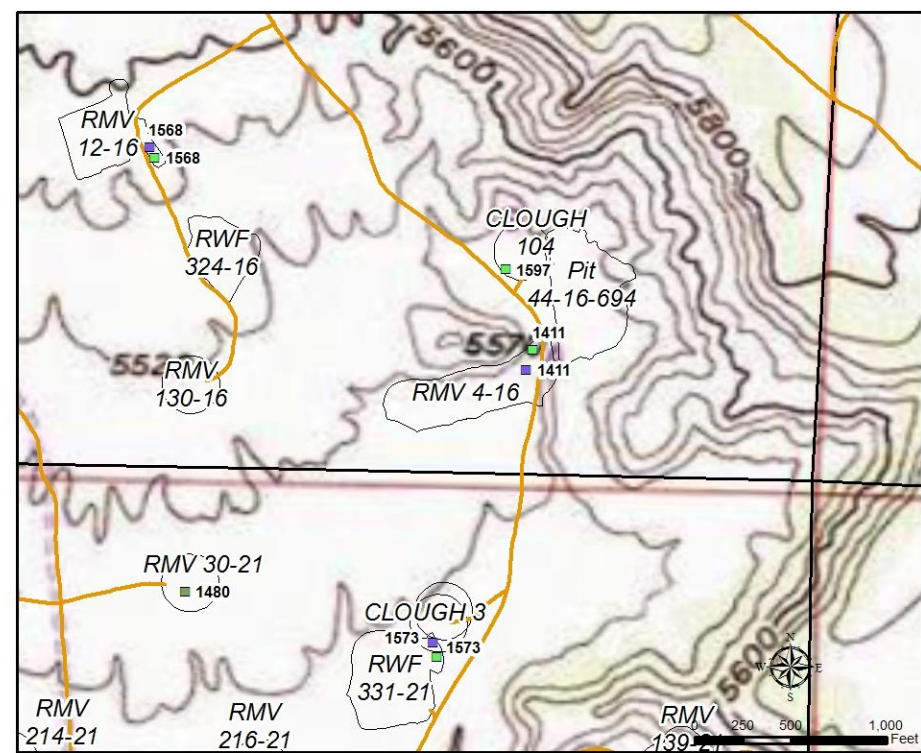
Dotted lined denote underground pipes. All lines denote 2" steel pipe, unless otherwise noted. Valves on separator not shown.



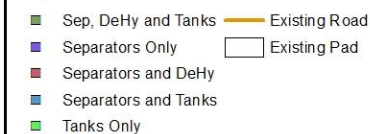
Legend



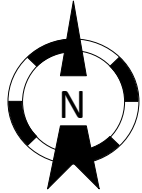
TEP Rocky Mountain, LLC
SPCC Facility Location Map
RMV 4-16



Legend



SPCC Facility Location Map
RMV 4-16



Volume Determination

- 1- Heat Rate MMBtu per hr (manufacture number)
- 2- Heat Rate Btu per hr = Heat Rate MMBtu per hr * 1,000,000
- 3- Operating Hours per year (hours expected to run in a year)
- 4- Mscf per year = Heat Rate MMBtu per hr * Operating Hours per year
- 5- Fuel Usage MMscf per year = Mscf per year / 1000
- 6- Fuel Heating Value Btu per scf = Reported OGOR value
- 7- Volumetric Flow scf per hr = Heat Rate MMBtu per hr / (Fuel Heating Value Btu per scf / 1,000,000)
- 8- Volumetric Flow scf per day = Volumetric Flow scf per hr * 24 hours
- 9- Daily Equipment Total Fuel Use scf per day = Volumetric Flow scf per day * Quantity of equipment on location

Location Name	Equipment	Quantity	Heat Rate MMBtu per hr	Heat Rate Btu per hr	Operating Hours per year	Mscf per year	Fuel Usage MMscf per year	Fuel Heating Value Btu per scf	Volumetric Flow scf per hr	Volumetric Flow scf per day	Daily Equipment Total Fuel Use scf per day
RMV 4-16 Pad											
	Separator Double Heater	1	0.5	500000	3600	1800	1.8	1156	432.44	10,378.47	10,378.47
	Separator Quad Heater	6	0.75	750000	3600	2700	2.7	1156	648.65	15,567.70	93,406.21
Pad Daily Total scf/day											103,784.68

Pad Name	Well Name	FMP/Meter Number	API Number
RMV 4-16 PAD	RWF 534-16	62086279	05-045-11098
	RWF 343-16	62086269	05-045-11084
	RWF 433-16	62086274	05-045-11095
	RMV 164-16	62086257	05-045-11096
	RWF 344-16	62086270	05-045-11105
	RWF 431-21	62086272	05-045-11097
	RWF 33-16	62086260	05-045-11099
	RWF 543-16	62086282	05-045-11106
	RWF 434-16	62086258	05-045-11101
	RWF 541-21	62086281	05-045-11103
	RWF 333-16	62086265	05-045-11104
	RWF 334-16	62086266	05-045-11102
	RMV 151-21	62086256	05-045-11100
	RMV 4-16	62054054	05-045-06866

Pad Name	Tank ID	FMP	CA COC
RMV 4-16 Pad	89949	Black Lease	● COC 33173
	90035	Green Lease	● COC 35842

Note: Some measurements on drawing are estimates and not field verified.

Page: 2 of 2

DRAWN BY: DHR

DATE: 1/5/2021

Facility Diagram

TEP Rocky Mountain, LLC – North Rulison

RMV 4-16

Latitude: 39.519943 Longitude: -107.889334

SW/SE, Sec. 16, TS6S, R94W

COC# 35842, 33173

Garfield County, CO

Legend

Water Dump Line

Flowline

Oil Dump Line 1

Oil Dump Line 2

Oil Dump Line 3

Oil Dump Line 4

Gas Sales Line

Unload Line

Overflow Line

Vent Line

Manifold Line

Load Line

Tank Heater

Well Head

Drip Tank

Valve

Load Out Valve

Gas Facility Measurement Point

Thermal Electrical Generator

HTU = Heat Trace Unit

HTP = Heat Trace Pump

Dotted lined denote underground pipes. All lines denote 2" steel pipe, unless otherwise noted. Valves on separator not shown.