

NEXTIER**Job Summary**

Ticket Number

TN#

BCO-2011-0032

Ticket Date

11/25/2020

COUNTY	COMPANY	API Number
WELD (CO)	ENSIGN	512320782
WELL NAME	RIG	JOB TYPE
NORRIS 16C	Ensign 354	CM-P2A-PERM.
SURFACE WELL LOCATION	CJES Field Supervisor	CUSTOMER REP
40.49 104.66364	Anthony Staples	John Schmitt

EMPLOYEES

JAMES MCFARLAND
TROY THYE
JEREMIAH MORENO

WELL PROFILE

Max Treating Pressure (psi):	Bottom Hole Static Temperature (°F):
Bottom Hole Circulating Temperature (°F):	Well Type:

Open Hole

1	Size (in)	TMD From (ft)	TMD to (ft)	TVD From (Ft)	TVD to (Ft)
	10	2500	404	2500	404
2	Size (in)	TMD From (ft)	TMD to (ft)	TVD From (Ft)	TVD to (Ft)

Casing/Tubing/Drill Pipe

Type	Size (in)	Weight (lb/ft)	Grade	TMD From (ft)	TMD to (ft)	TVD From (Ft)	TVD to (Ft)
Surface	8.625	24		404	0	404	0
Production	4.5	10.5		7319	2500	7319	2500
Tubing	2.375	4.7		2550	0	2550	0

CEMENT DATA

Stage 1:	From Depth (ft):	2550	To Depth (ft):	2300
Type: Shoe Plugs	Volume (sacks):	100	Volume (bbls):	20.4
Cement & Additives:		Density (ppg)	Yield (ft³/sk)	Water Req.
CLASS G		15.8	1.15	5.00
Stage 2:	From Depth (ft):	1769	To Depth (ft):	1569
Type: Shoe plug	Volume (sacks):	100	Volume (bbls):	20.4
Cement & Additives:		Density (ppg)	Yield (ft³/sk)	Water Req.
CLASS G		15.8	1.15	5.00
Stage 3:	From Depth (ft):		To Depth (ft):	
Type:	Volume (sacks):		Volume (bbls):	
Cement & Additives:		Density (ppg)	Yield (ft³/sk)	Water Req.
Stage 4:	From Depth (ft):		To Depth (ft):	
Type:	Volume (sacks):		Volume (bbls):	
Cement & Additives:		Density (ppg)	Yield (ft³/sk)	Water Req.

SUMMARY

Preflushes:	5 bbls of Fresh Water	Calculated Displacement (bbl):	8.9	Stage 1	8.9	Stage 2	5.9
	5 bbls of Fresh Water	Actual Displacement (bbl):	8.9				
Total Preflush/Spacer Volume (bbl):	10	Plug Bump (Y/N):		Bump Pressure (psi):			
Total Slurry Volume (bbl):	40.8	Lost Returns (Y/N):	N (if Y, when)				
Total Fluid Pumped	65.6						
Returns to Surface:							

Job Notes (fluids
pumped / procedures /
tools / etc.):

Pumped 5 bbls of H2O followed by 20.4 Bbls of 15.8# Class G Cement and Displaced with 8.9 bbls giving calculated coverage from 2550ft to 2300ft. Pumped 5 bbls H2O followed by 20.4 bbls of 15.8# Class G Cement and displaced with 5.9 Bbls. Calculated Coverage from 1769ft to 1569ft

Customer Representative Signature:

Thank You For Using
NextTier Completion Solutions

NEXTIER

NEXTIER

NEXTER

Client
Ticket No.
Location
Comments

PDC
20110032

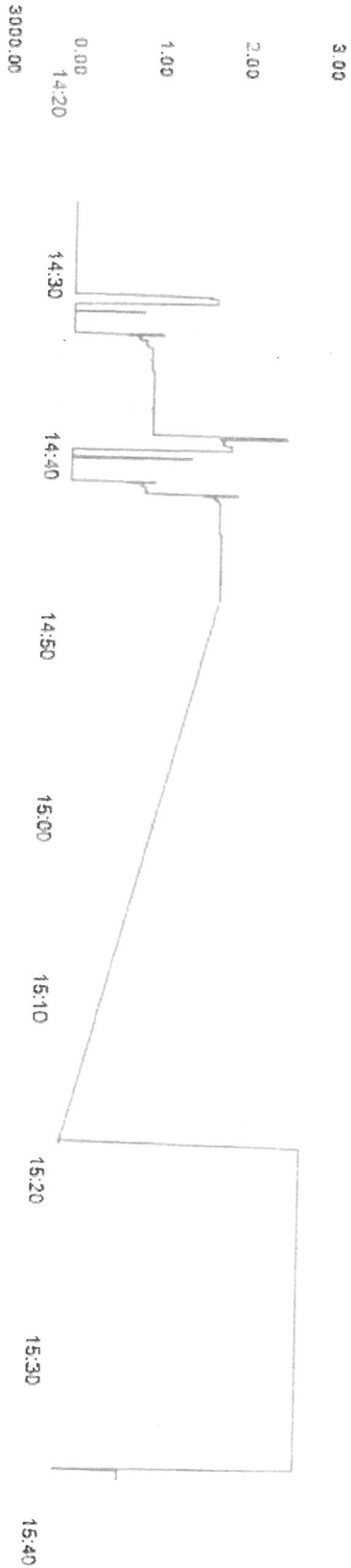
Client Rep
Well Name
Job Type

John
Norris 16C
Abandonment Plugs

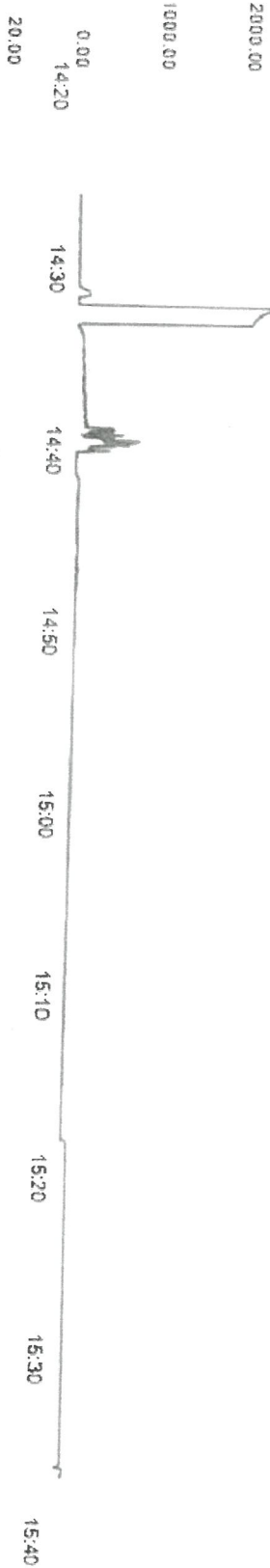
Supervisor
Unit No.
Service District
Job Date

Anthony Staples
445051
Brighton
11/25/2020

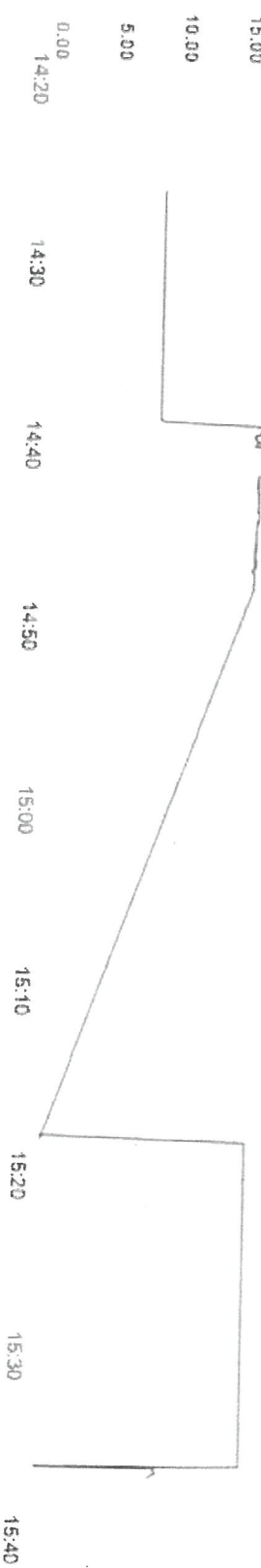
Unit 445051 Rate Total
(m³/min)



Unit 445051 Pump Pressure
(MPa)



Unit 445051 Density
(kg/m³)





Job Summary

Ticket Number
TN# BCO-2011-0035

Ticket Date
11/30/2020

COUNTY	COMPANY	API Number
WELD (CO)	ENSIGN	512320782
WELL NAME	RIG	JOB TYPE
NORRIS 16C	Ensign 354	CM-P2A-PERM.
SURFACE WELL LOCATION	CJES Field Supervisor	CUSTOMER REP
40.49 104.66364	Anthony Staples	John Schmitt

EMPLOYEES
RYAN PETERSON
JEREMIAH MORENO

WELL PROFILE	
Max Treating Pressure (psi):	Bottom Hole Static Temperature (°F):
Bottom Hole Circulating Temperature (°F):	Well Type:

Open Hole

1	Size (in)	TMD From (ft)	TMD to (ft)	TVD From (Ft)	TVD to (Ft)
	10	777	577	777	577
2	Size (in)	TMD From (ft)	TMD to (ft)	TVD From (Ft)	TVD to (Ft)
	14	577	404	577	404

Casing/Tubing/Drill Pipe

Type	Size (in)	Weight (lb/ft)	Grade	TMD From (ft)	TMD to (ft)	TVD From (Ft)	TVD to (Ft)
Surface	8.625	24		404	0	404	0
Type	Size (in)	Weight (lb/ft)	Grade	TMD From (ft)	TMD to (ft)	TVD From (Ft)	TVD to (Ft)
Tubing	2.375	4.7		777	0	777	0
Type	Size (in)	Weight (lb/ft)	Grade	TMD From (ft)	TMD to (ft)	TVD From (Ft)	TVD to (Ft)

CEMENT DATA

Stage 1:	From Depth (ft):	777	To Depth (ft):	0
Type: Surface plug	Volume (sacks):	269	Volume (bbls):	55
Cement & Additives:		Density (ppg)	Yield (ft³/sk)	Water Req.
CLASS G		15.8	1.15	5.00

Stage 2:	From Depth (ft):		To Depth (ft):	0
Type: Top Off	Volume (sacks):	30	Volume (bbls):	6
Cement & Additives:		Density (ppg)	Yield (ft³/sk)	Water Req.
CLASS G		15.8	1.15	5.00

Stage 3:	From Depth (ft):		To Depth (ft):	
Type:	Volume (sacks):		Volume (bbls):	
Cement & Additives:		Density (ppg)	Yield (ft³/sk)	Water Req.

Stage 4:	From Depth (ft):		To Depth (ft):	
Type:	Volume (sacks):		Volume (bbls):	
Cement & Additives:		Density (ppg)	Yield (ft³/sk)	Water Req.

SUMMARY

Preflushes:	6 bbls of Fresh Water	Calculated Displacement (bbl):	Stage 1	Stage 2
	bbls of	Actual Displacement (bbl):		
	bbls of			
Total Preflush/Spacer Volume (bbl):	6	Plug Bump (Y/N):	Bump Pressure (psi):	
Total Slurry Volume (bbl):	61	Lost Returns (Y/N):	N (if Y, when)	
Total Fluid Pumped	67			
Returns to Surface:	2 bbls			

Job Notes (fluids pumped / procedures / tools / etc.):

Pump 6 bbls of Fresh water to break Circulation followed by 269 sks (55 bbls) of 15.8# Class G Cement. Calculated Coverage from 777 ft to Surface. Topped off well with the remaining 6 bbls.

Customer Representative Signature:

Thank You For Using
NexTier Completion Solutions

NEXTIER

[illegible]

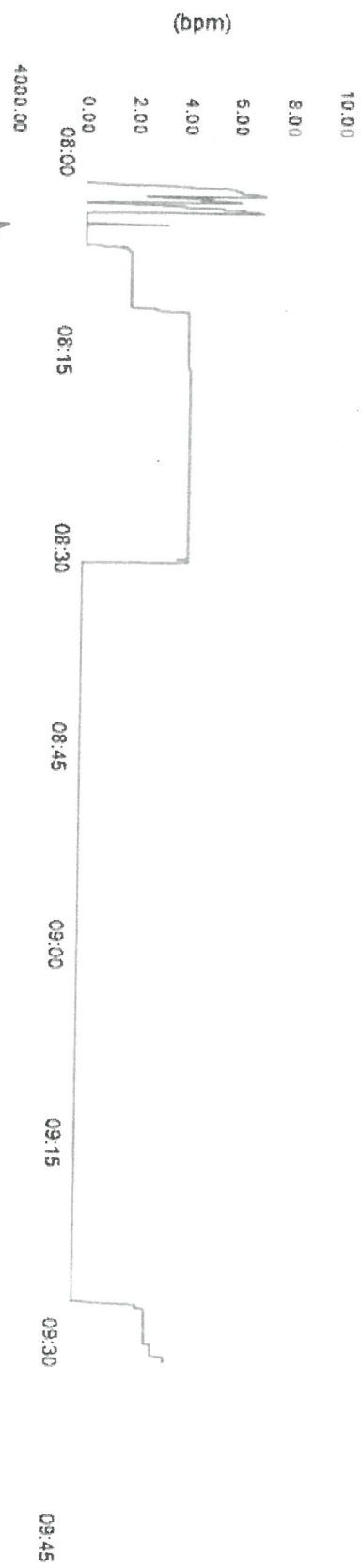


Client
Ticket No. 20110035
Location
Comments

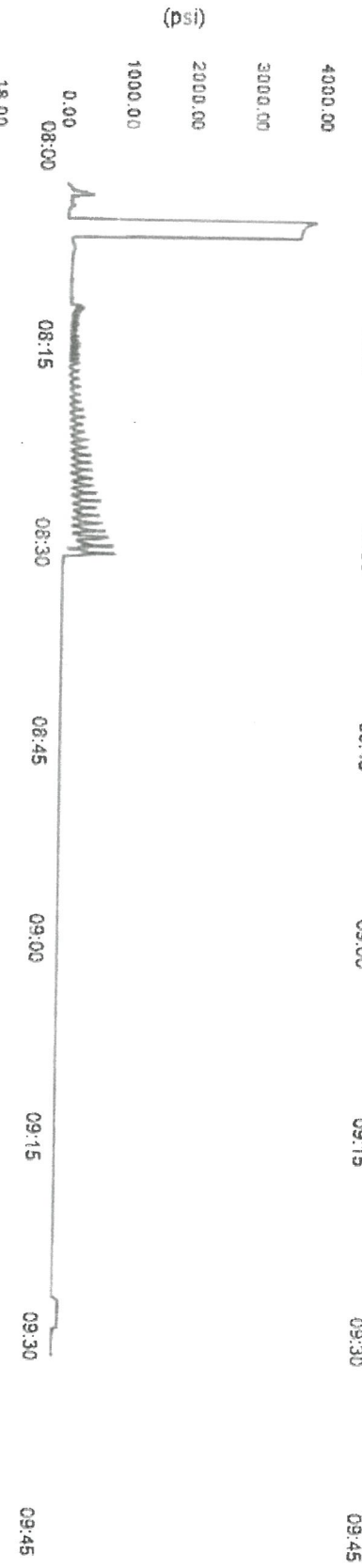
PDC
Client Rep
Well Name
Job Type
Abandonment Plugs

Supervisor
Unit No. 445070
Service District
Job Date 11/30/2020
ANHONY STAPLES
BIGHTON

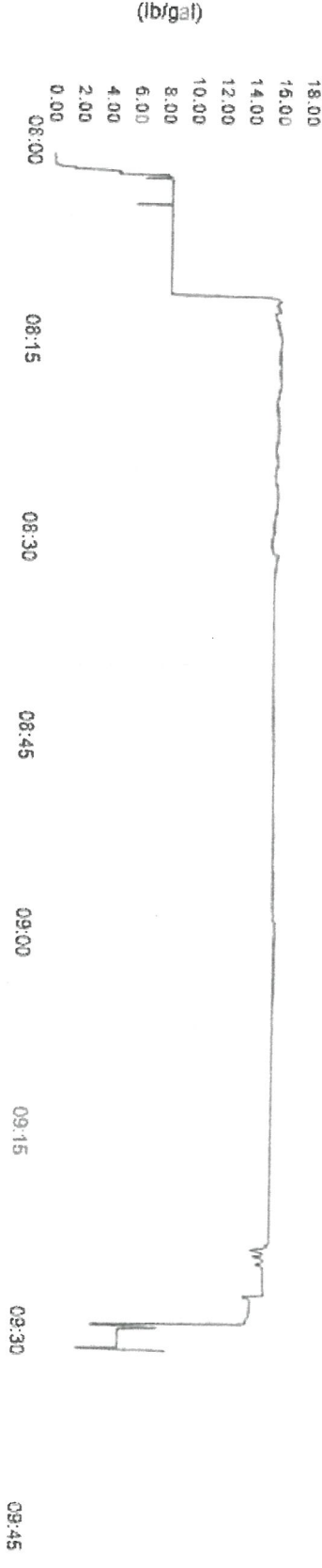
Unit 445070 Rate Total



Unit 445070 Pump Pressure



Unit 445070 Density



RMWS- Service Ticket & Invoice:

Rocky Mountain Wireline Service
2144 Hwy 6 & 50
Grand Junction, CO 81505
970-245-9828



Ticket Number

114074

Date

11/25/2020

Well

Norris 16C

Field

Wattenberg

County / State

Weld

Services provided for:

ENSIGN WELL SERVICE
2154 Hwy 6 & 50
Grand Junction, Colorado 81505

Services ordered by:

Logan Hancock
(970)712-4498
Logan.Hancock@ensignenergy.com

Job Data

Field Office

Johnstown- Line Truck #
CO 219

Crane #

Pickup
Truck #
72

Explosives Permit

92983

Crew Members

WELLS TORRES PETERSON

CSG Size
4 1/2

WT
10.5

Zero	Fluid	Level	RMWS TD	Corrected	To Agree With	Dated	Consultant
	WATER		7150				JOHN SCHMITT

Job Notes

RIG 354

Travel

Report To Shop	Arrive At Location	On Well	Off well
11/25/2020 5:45 AM MST	11/25/2020 7:00 AM MST	11/25/2020 7:30 AM MST	
Depart Location	Return To Shop	Travel Notes	

Activity

Logging - Bid Work

Description	From	To	Units Used
Ensign - CBL 2,000' +		2700	0
			1.00 Units

Miscellaneous - Bid Work

Description	From	To	Units Used
Ensign - 4 1/2" 10K CIBP @ 5,000' +		7092	7091
Ensign - Dump Bail 2 SX Cement (STANDARD)		7092	
Ensign - 4 1/2" 10K CIBP @ 5,000' +		6743	6742
Ensign - Dump Bail 2 SX Cement (STANDARD)		6735	
			1.00 Units
			1.00 Units
			1.00 Units
			1.00 Units

Pipe Recovery - Bid Work

Description	From	To	Units Used
Ensign - 4 1/2" Jet Cutter		2500	
			1.00 Units

Signatures

Authorization Signature

John Schmitt
11/25/2020 11:17 AM MST

Authorization Notes

AFE	Cost Code	Well / Lease	Approver Name
		Norris 16C	John Schmitt

11/25/2020 11:18 AM MST

RMWS - Service Ticket & Invoice #114074