

Foundation Energy Management LLC, Bolin 1-8
125-06255

Inspection #688309196

12/16/2020

Routine Inspection



Colorado Oil and Gas Conservation Commission
40.07916, -102.53009, 3881.2ft, 200°
12/16/2020 02:53:18 PM

FOUNDATION

ENERGY MANAGEMENT, LLC

BOLIN 1-8

NWNE Sec.8-T1N-R46W
Rd. 36 & Rd R, 1 Mile S., W. into
Yuma County, CO

24 HOUR EMERGENCY CALL:
1-866-767-3600

Colorado Oil and Gas Conservation Commission
40.07226, -102.53773, 3897.6ft, 34°
12/16/2020 02:57:10 PM



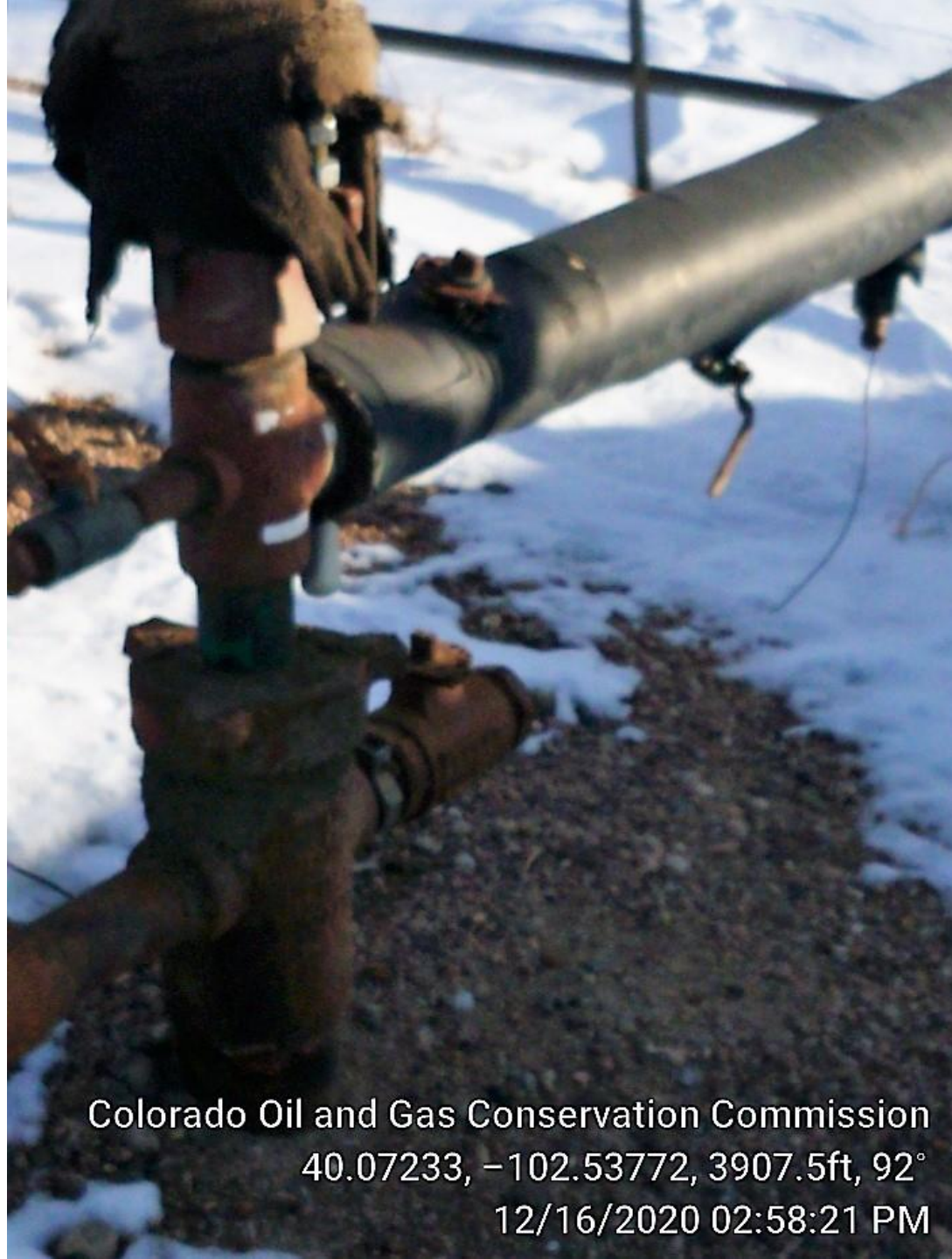
Colorado Oil and Gas Conservation Commission
40.07238, -102.53777, 3900.9ft, 104°
12/16/2020 02:57:26 PM



Colorado Oil and Gas Conservation Commission

40.07227, -102.53766, 3910.8ft, 286°

12/16/2020 02:59:56 PM



Colorado Oil and Gas Conservation Commission
40.07233, -102.53772, 3907.5ft, 92°
12/16/2020 02:58:21 PM



Colorado Oil and Gas Conservation Commission
40.0723, -102.53768, 3910.8ft, 229°
12/16/2020 02:58:48 PM



Colorado Oil and Gas Conservation Commission
40.07232, -102.53769, 3907.5ft, 337°
12/16/2020 02:58:15 PM



Colorado Oil and Gas Conservation Commission
40.07232, -102.53756, 3914.0ft, 103°
12/16/2020 03:00:03 PM