

Inspection Photos

Operator: High Plains Energy LLC, 10460

Lease: Pronghorn State 16-15-48 1-H

Facility ID/API, 431414 / 05-017-07727



1. Wellhead, No visible lease sign



2. Cement pad with exposed electric wires.

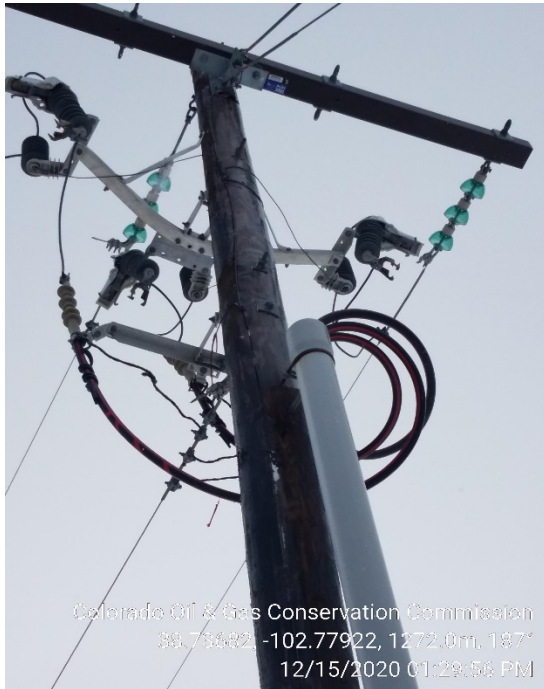


Inspection Photos

Operator: High Plains Energy LLC, 10460

Lease: Pronghorn State 16-15-48 1-H

Facility ID/API, 431414 / 05-017-07727



3. Electric pole with fuses removed.



4. Fuses hung on electric pole.

Inspection Photos

Operator: High Plains Energy LLC, 10460

Lease: Pronghorn State 16-15-48 1-H

Facility ID/API, 431414 / 05-017-07727



5. Electric wire sticking out of ground.



6. 1" gas supply riser, Not LO/TO.



Inspection Photos

Operator: High Plains Energy LLC, 10460

Lease: Pronghorn State 16-15-48 1-H

Facility ID/API, 431414 / 05-017-07727



7. Misc flowline risers, No LO/TO.



8. Misc risers, No LO/TO.



Inspection Photos

Operator: High Plains Energy LLC, 10460

Lease: Pronghorn State 16-15-48 1-H

Facility ID/API, 431414 / 05-017-07727



9. Metal shed, Misc risers and piping, No LO/TO.



8. Misc risers, No LO/TO, Cement pad & elec panels.