



Terra Energy Partners, LLC

LONG STRING POST JOB REPORT

FEDERAL PA 514-23 05-045-24309
Garfield CO

CallSheet #: 75061
Proposal #: 50140



LONG STRING Post Job Report

Attention: Mr. Lynn Cass | (970) 263-2716 | lcass@terraep.com
Terra Energy Partners, LLC
4828 Loop Central Dr., Suite 900 | Houston, TX 77081

Dear Mr. Lynn Cass,

Thank you for the opportunity to provide cementing services on this well. American Cementing strives to achieve complete customer satisfaction. If you have any questions regarding the services or data provided, please contact American Cementing at any time.

Sincerely,

Zen Keith

Field Engineer | (307) 757-7178 | zen.keith@americancementing.com

Field Office 28730 US-6, Rifle, CO 81650
Phone: (970) 305-4888

Table of Contents

1 Job Details & Summary	3
Geometry.....	3
Equipment / People	3
Timing	3
General Job Information.....	3
Well Fluid Details	3
Job Details.....	3
Job Details (cont.)	3
Circulation.....	4
Job Execution Information.....	4
Job Fluid Details	4
2 Job Logs	5
3 Water Analysis	5
4 Pump Diagrams	6

1 Job Details & Summary

Geometry

Type	Function	OD (in)	ID (in)	Weight (lb/ft)	Thread	Top (ft)	Bottom (ft)	Excess (%)
Casing	Outer	9.625	8.921	36		0	1127	0
Open Hole	Outer		8.75			1100	8880	45
Casing	Inner	4.5	4	11.6		0	8873.82	0

Equipment / People

Unit Type	Unit	Power Unit	Employee #1	Mileage
Silo	Silo #25			
Bulk Trailer	CTF-407	TRB-425	Richey, Steven	39
Cement Pump	CPF-058	TRH-1140	Gonzales, Ivan	39
Light Duty Trailers	LDV-5429		Castillo, Francisco	39

Timing

Event	Date/Time
Call Out	10/1/2020 23:00
Depart Facility	10/2/2020 00:30
On Location	10/2/2020 01:00
Rig Up Iron	10/2/2020 02:00
Job Started	10/2/2020 04:38
Job Completed	10/2/2020 06:21
Rig Down Iron	10/2/2020 06:35
Depart Location	10/2/2020 07:15

General Job Information

Metrics	Value
Well Fluid Density	12.7 lb/gal
Well Fluid Type	WBM
Rig Circulation Vol	600 bbls
Rig Circulation Time	1 hours
Calculated Displacement	137 bbls
Actual Displacement	137 bbls
Total Spacer to Surface	0 bbls
Total CMT to Surface	0 bbls
Well Topped Out	N/A

Well Fluid Details

Metrics	Value
Plastic Viscosity	20
Yield Point	18
10 sec. SGS	9
10 min. SGS	40
30 min. SGS	57
Filtrate	N/A
Flow Line Temp.	146

Job Details

Metrics	Value
Flare Prior to Job	No
Flare Prior to Job	0 units
Flare During Job	No
Flare During Job	0 units
Flare at End of Job	No
Flare at End of Job	0 units
Well Full Prior to Job	Yes
Well Fluid Density Into Well	12.7 lb/gal
Well Fluid Density Out of Well	12.7 lb/gal

Job Details (cont.)

Metrics	Value
BHCT	155 °F
BHST	225 °F

Circulation

Lost Circulation Experienced
No

Job Execution Information

Job	Fluid	Product	Function	Density (lb/gal)	Yield (ft ³ /sk)	Water Rq. (gal/sk)	Water Rq. (gal/bbl)	Volume (sks)	Volume (bbl)	Top (ft)
1	1	Water	Flush	8.34			42.00		10.00	3677
1	2	Mud Flush	Flush	8.45			40.86		20.00	3803
1	3	Water	Flush	8.34			42.00		10.00	4055
1	4	Primary Cement	Primary	14.20	1.72	8.08		1252.00	384.03	4181
1	5	Displacement	DisplacementFinal	8.34			42.00		137.00	0

Job Fluid Details

Job	Fluid	Type	Fluid	Product	Function	Conc.	Uom
1	2	Flush	Mud Flush	SAPP	Surfactant	10.00	lb/bbl
1	2	Flush	Mud Flush	SS-201	Surfactant	0.50	gal/bbl
1	4	Primary	Primary Cement	CLASS G	Cement	80.00	%
1	4	Primary	Primary Cement	FLY ASH (POZZOLAN)	Extender	20.00	%
1	4	Primary	Primary Cement	FL-66	FluidLoss	0.40	%BWOB
1	4	Primary	Primary Cement	FP-24	Defoamer	0.30	%BWOB
1	4	Primary	Primary Cement	GW-86	Viscosifier	0.10	%BWOB
1	4	Primary	Primary Cement	IntegraSeal POLI	LostCirculation	0.25	lb/sk
1	4	Primary	Primary Cement	R-3	Retarder	0.30	%BWOB
1	4	Primary	Primary Cement	S-8	StrengthRetrogression	27.00	%BWOB

2 Job Logs

Line	Event	Date (MM/DD/YY)	Time (HH:MM)	Density (lb/gal)	Pump Rate (bpm)	Pump Volume (bbls)	Pipe Pressure (psi)	Comment
1	CALLOUT	10/1/2020	23:00					ON LOCATION AT 01:30 HRS
2	LEAVE YARD	10/2/2020	00:30					LEAVE THE YARD
3	ON LOCATION	10/2/2020	01:00					ON LOCATION, RIG RUNNING CASING
4	RIG UP	10/2/2020	02:00					RIG UP MEETING, RIG UP
5	SAFETY MEETING	10/2/2020	04:00					PRE-JOB SAFETY MEETING
6	PRESSURE TEST	10/2/2020	04:35				5200	PRESSURE TEST LINES
7	SPACER	10/2/2020	04:38	8.34	5	10	993	WATER SPACER
8	SPACER	10/2/2020	04:40	8.4	7	20	1583	MUD FLUSH SPACER
9	SPACER	10/2/2020	04:43	8.34	5	10	1241	WATER SPACER
10	PUMP CEMENT	10/2/2020	04:45	14.2	7	50	2233	1252 SKS/384 BBLS AT 14.2 PPG
11	PUMP CEMENT	10/2/2020	04:54	14.2	5	50	1517	100 BBLS CEMENT PUMPED
12	PUMP CEMENT	10/2/2020	05:03	14.2	7.5	50	1287	150 BBLS CEMENT PUMPED
13	PUMP CEMENT	10/2/2020	05:10	14.2	7.5	50	1197	200 BBLS CEMENT PUMPED
14	PUMP CEMENT	10/2/2020	05:17	14.2	7.5	50	1247	250 BBLS CEMENT PUMPED
15	PUMP CEMENT	10/2/2020	05:24	14.2	7.5	50	1231	300 BBLS CEMENT PUMPED
16	PUMP CEMENT	10/2/2020	05:31	14.2	5	84	673	384 BBLS CEMENT PUMPED
17	SHUTDOWN	10/2/2020	05:51					WASH PUMP AND LINES
18	DISPLACEMENT	10/2/2020	06:03	8.4	9.5	50	2033	50 BBLS DISPLACEMENT KCL WATER
19	DISPLACEMENT	10/2/2020	06:10	8.4	9.5	77	3141	127 BBLS DISPLACEMENT PUMPED
20	DISPLACEMENT	10/2/2020	06:18	8.4	4	10	2643	SLOW RATE
21	LAND PLUG	10/2/2020	06:21				3631	LAND PLUG, FULL RETURNS
22	CHECK FLOATS	10/2/2020	06:25					FLOATS HELD, 1.5 BBLS FLOW BACK
23	RIG DOWN	10/2/2020	06:35					RIG DOWN MEETING, RIG DOWN
24	LEAVE LOCATION	10/2/2020	07:15					JM MEETING, LEAVE LOCATION

3 Water Analysis

Metrics	Value	Recommended
Water Source	Upright Rig Tank	
Temperature	67 °F	50-80 °F
pH Level	7	5.5-8.5
Chlorides	0 mg/L	0-3000 mg/L
Total Alkalinity	240	0-1000
Total Hardness	250 mg/L	0-500 mg/L
Carbonates	0 mg/L	0-100 mg/L
Sulfates	200 mg/L	0-1500 mg/L
Potassium	250 mg/L	0-3000 mg/L
Iron	0 mg/L	0-300 mg/L

4 Pump Diagrams

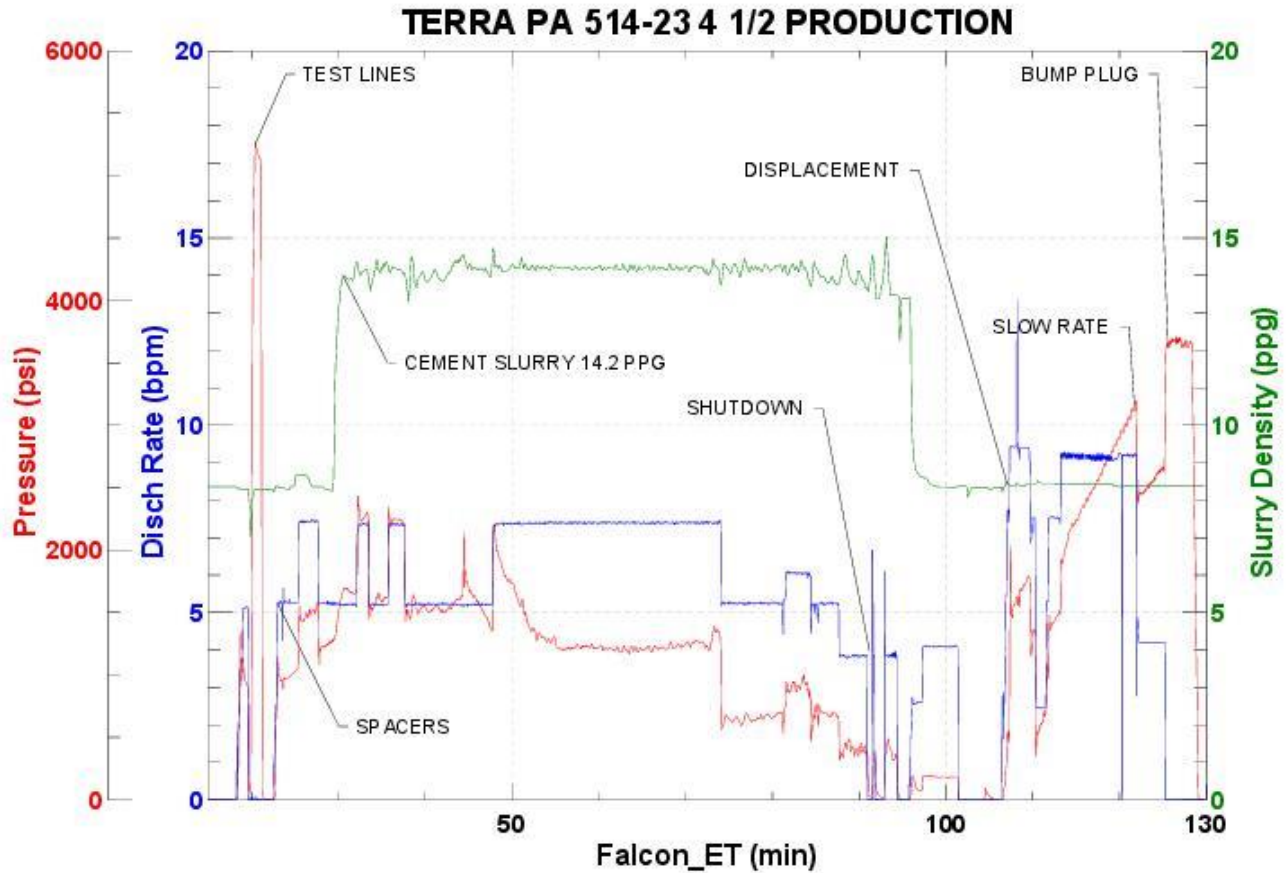


JobMaster Program Version 5.01C 1

Job Number: 75061

Customer: TERRA

Well Name: PA 514-23



BJ Services

Job Start: Friday, October 02, 2020