

# GREAT GUNS

R. A. Guard Log

FILE NO.

COMPANY Mull Drilling Co.

WELL NO. 1 Crosby

FIELD Smoky Creek Pool

COUNTY Cheyenne STATE Colorado

LOCATION:

NE - NW

SEC 28 TWP 13 RGE 44

OTHER SERVICES

Permanent Datum Ground level Elev. 4215

Log Measured from Kelly Bushing 10FT. Above Permanent Datum

Drilling Measured from Kelly Bushing

Elevations:

KB 4225

DF 4222

GL 4215

Date	<u>5-20-73</u>	<u>Gamma</u>	<u>Neutron</u>	<u>Guard</u>	<u>Caliper</u>
Run No.	<u>040</u>	<u>040</u>	<u>040</u>	<u>040</u>	<u>040</u>
Depth-Driller	<u>5440</u>	<u>5440</u>	<u>5440</u>	<u>5440</u>	<u>5440</u>
Depth-Logger	<u>5442</u>	<u>5442</u>	<u>5442</u>	<u>5442</u>	<u>5442</u>
Bottom Logged Interval	<u>5433</u>	<u>5441</u>	<u>5437</u>	<u>5428</u>	<u>5428</u>
Top Logged Interval	<u>00</u>	<u>00</u>	<u>3600</u>	<u>3600</u>	<u>3600</u>
Casing - Driller	<u>8 5/8 @ 287</u>	<u>@</u>	<u>@</u>	<u>@</u>	<u>@</u>
Casing - Logger	<u>7 7/8</u>				
Rt Size	<u>7 7/8</u>				
Type Fluid in Hole	<u>Chemical Mud</u>				
Density and Viscosity	<u>8.9 56</u>				
IR and Fluid Loss	<u>10.8 6.4 cc</u>				
Source of Sample	<u>PIT</u>				
Rm @ Meas. Temp.	<u>.76 @ 80 °F</u>	<u>@</u>	<u>°F</u>	<u>@</u>	<u>°F</u>
Rmf @ Meas. Temp.	<u>.57 @ 80 °F</u>	<u>@</u>	<u>°F</u>	<u>@</u>	<u>°F</u>
Rmc @ Meas. Temp.	<u>1.1 @ 80 °F</u>	<u>@</u>	<u>°F</u>	<u>@</u>	<u>°F</u>
Source of Rmf and Rmc	<u>CHART</u>				
Rm @ BHT	<u>.5 @ 125 °F</u>	<u>@</u>	<u>°F</u>	<u>@</u>	<u>°F</u>
Time Since Circ	<u>8 Hours</u>				
Max. Rec. Temp. Deg. F.	<u>125 °F</u>	<u>°F</u>	<u>°F</u>	<u>°F</u>	<u>°F</u>
Equip. No. and Location	<u>14 Hays</u>				
Recorded By	<u>Fred Barber</u>				
Witnessed By	<u>Mr. Wark</u>				

REMARKS

Resistivity of 1st & 2 water sample, 22 @ 100°  
Resistivity of 1st & 1 water sample, 25 @ 100°

Changes in Mud Type or Additional Samples

Date Sample No. 5-20-73 040

Depth-Driller

Type Fluid in Hole

Dens.

Visc.

pH

Fluid Loss

Source of Sample

Rm @ Meas. Temp.

Rmf @ Meas. Temp.

Rmc @ Meas. Temp.

Source Rmf Rmc

Rm @ BHT

Rmf @ BHT

Rmc @ BHT

Scale Changes

Scale Up Hole

Scale Down Hole

Equipment Data

Run. No.

Tool Type

Tool Position

Other

EQUIPMENT DATA

Gamma Ray

Run No.

Log Type

Tool Model No.

Diameter

Detector Model No.

Type

Length

Distance to N. Source

General

Hoist Truck No.

Instrument Truck No.

Tool Serial No.

Neutron

Run No.

Log Type

Tool Model No.

Diameter

Detector Model No.

Type

Length

Source Model No.

Serial No.

Spacing

Type

Strength

LOGGING DATA

General

Run No.

From

To

Speed

T. C.

Sec.

Sens.

Settings

Div. L or R

API G.R. Units

Gamma Ray

Run No.

Log Type

Tool Model No.

Diameter

Detector Model No.

Type

Length

Source Model No.

Serial No.

Spacing

Neutron

Run No.

Log Type

Tool Model No.

Diameter

Detector Model No.

Type

Length

Source Model No.

Serial No.

Spacing

API N. Units

per Log Div.

Settings

Div. L or R

Sec.

2

1000

62

100 ft.

100 ft.

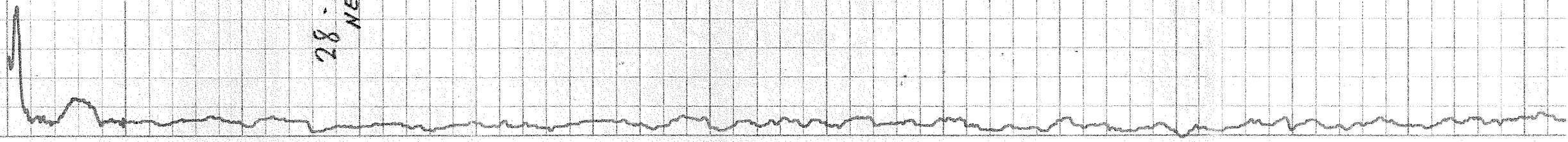
100 ft.

5-20-73  
Mull Drilling Co. Crosby Pool Field Pool

5-20-13  
Mull 01400 crusty soil Field Plot

KB 4205

28-13-44  
NE NW



100

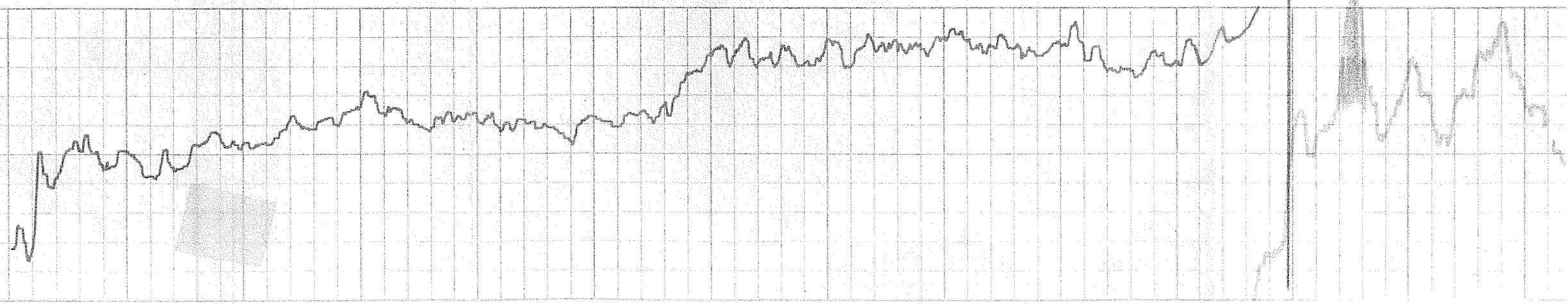
2

3

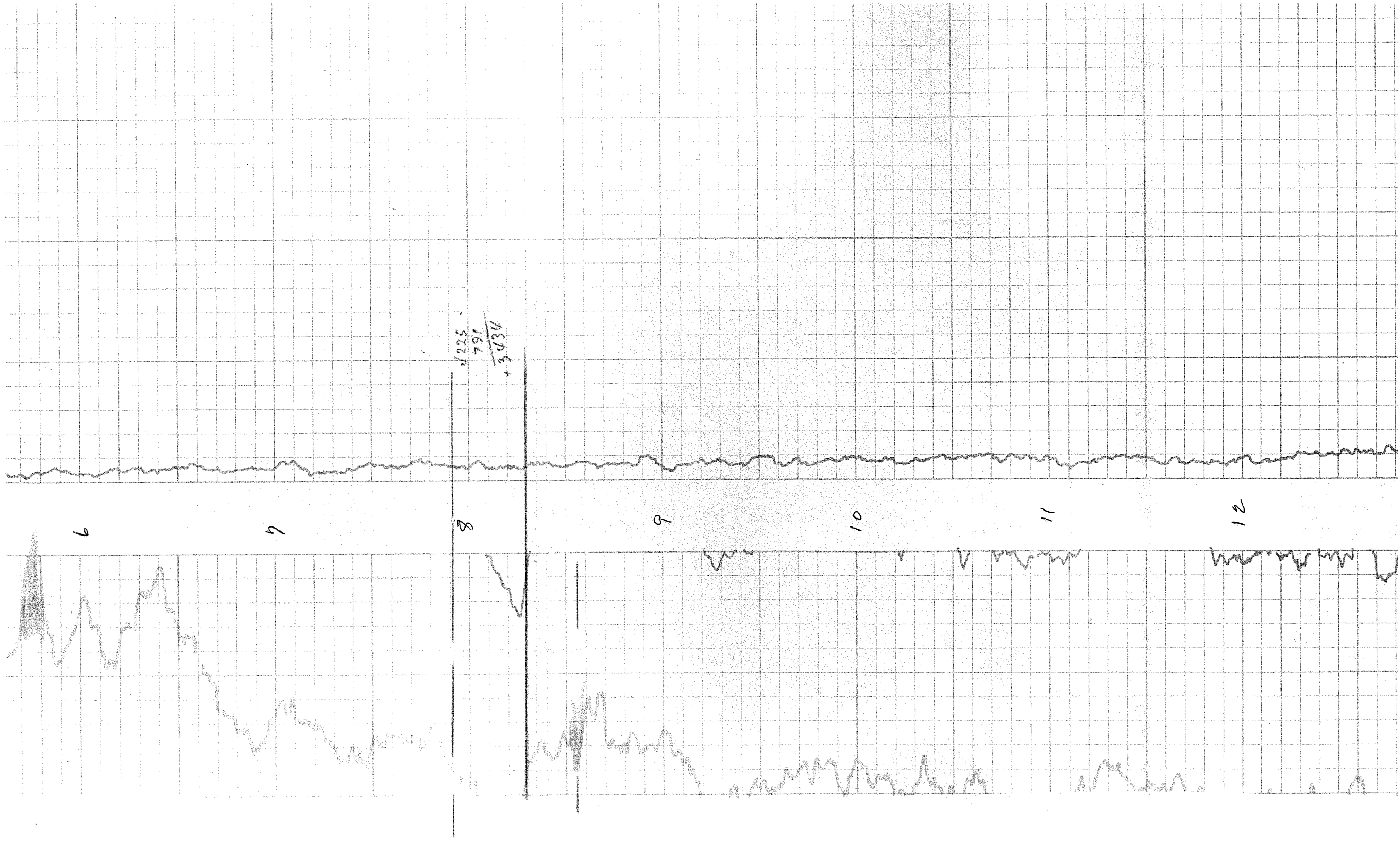
4

5

6







225  
791  
+ 3034

6

7

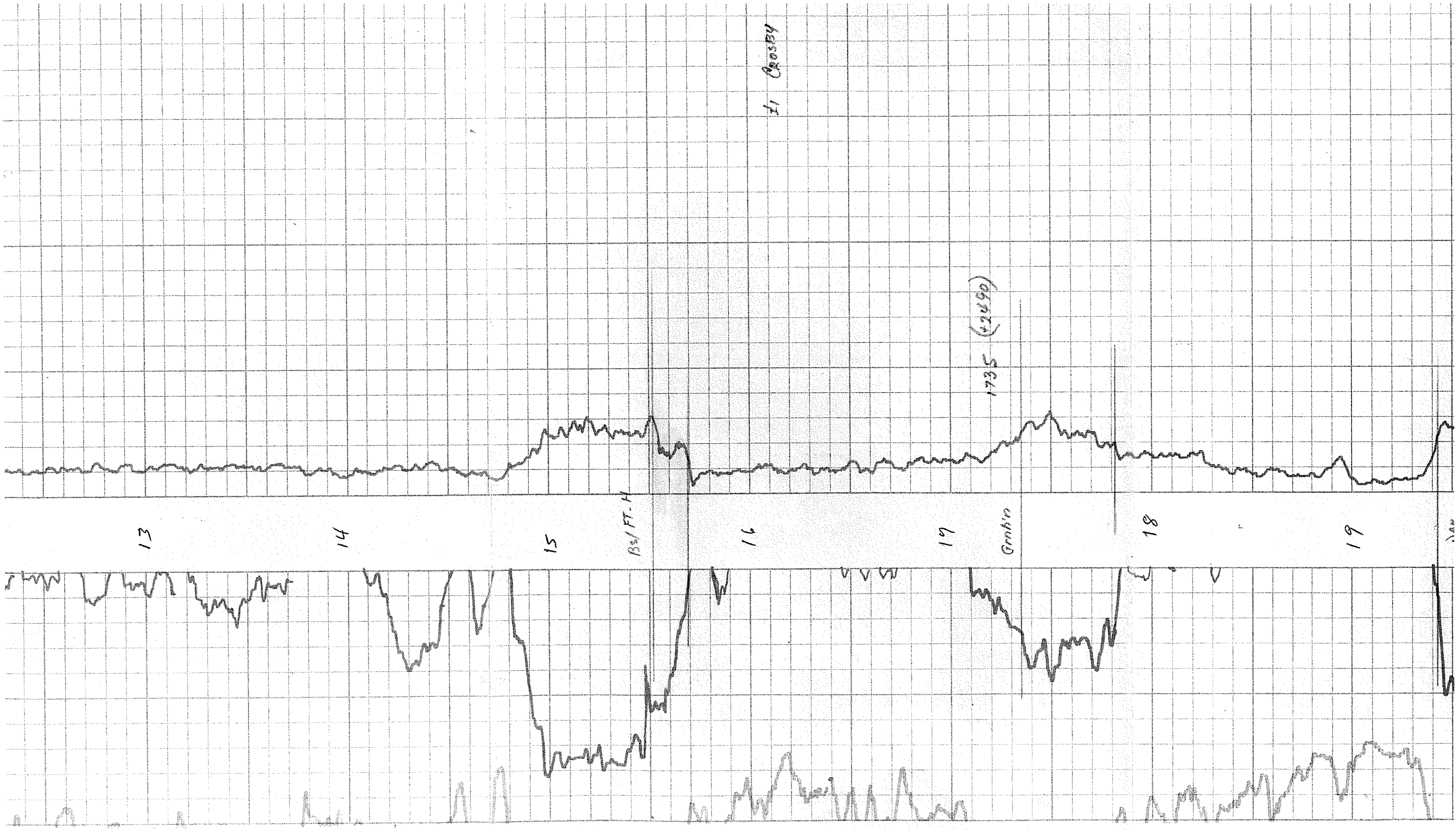
8

9

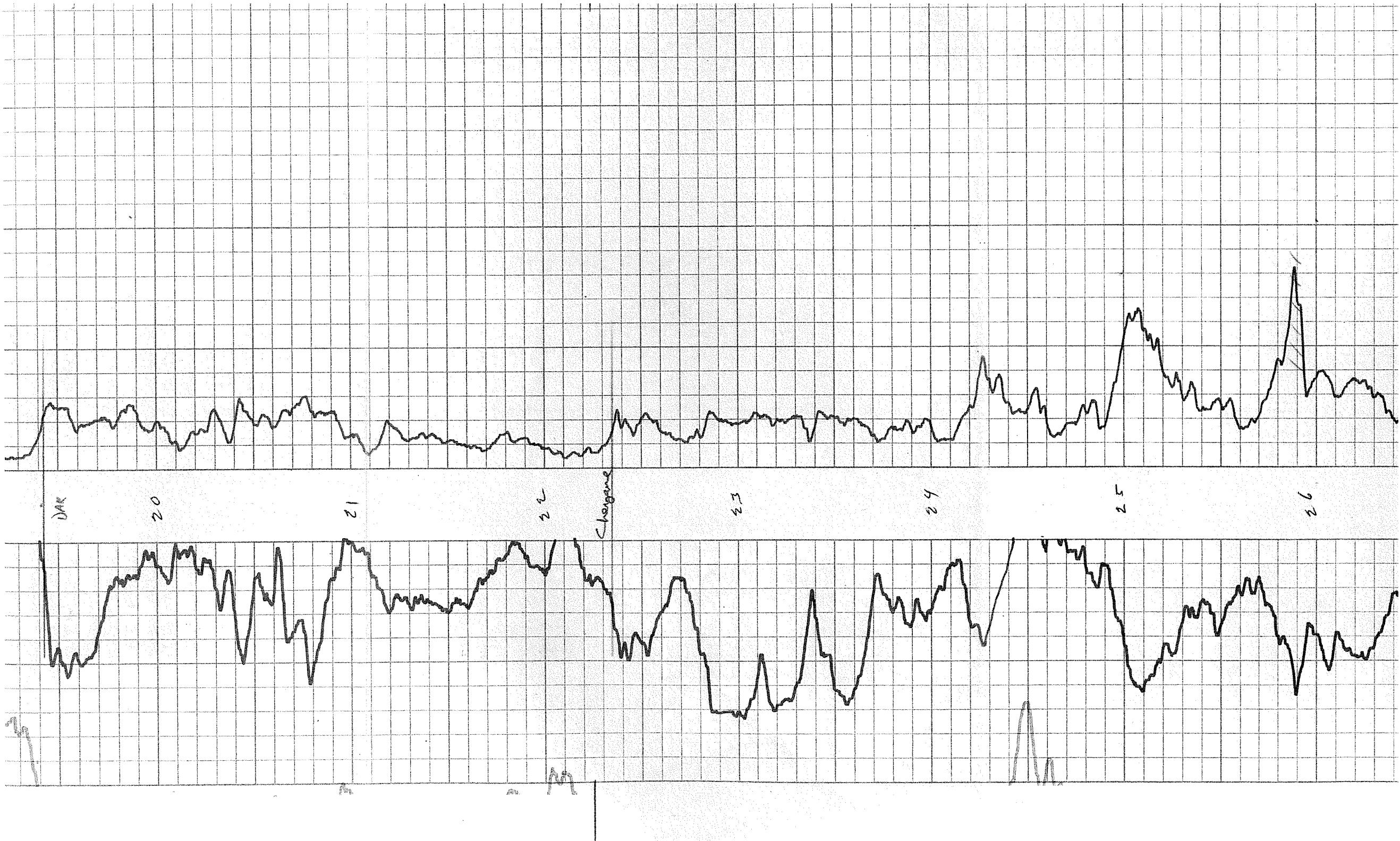
10

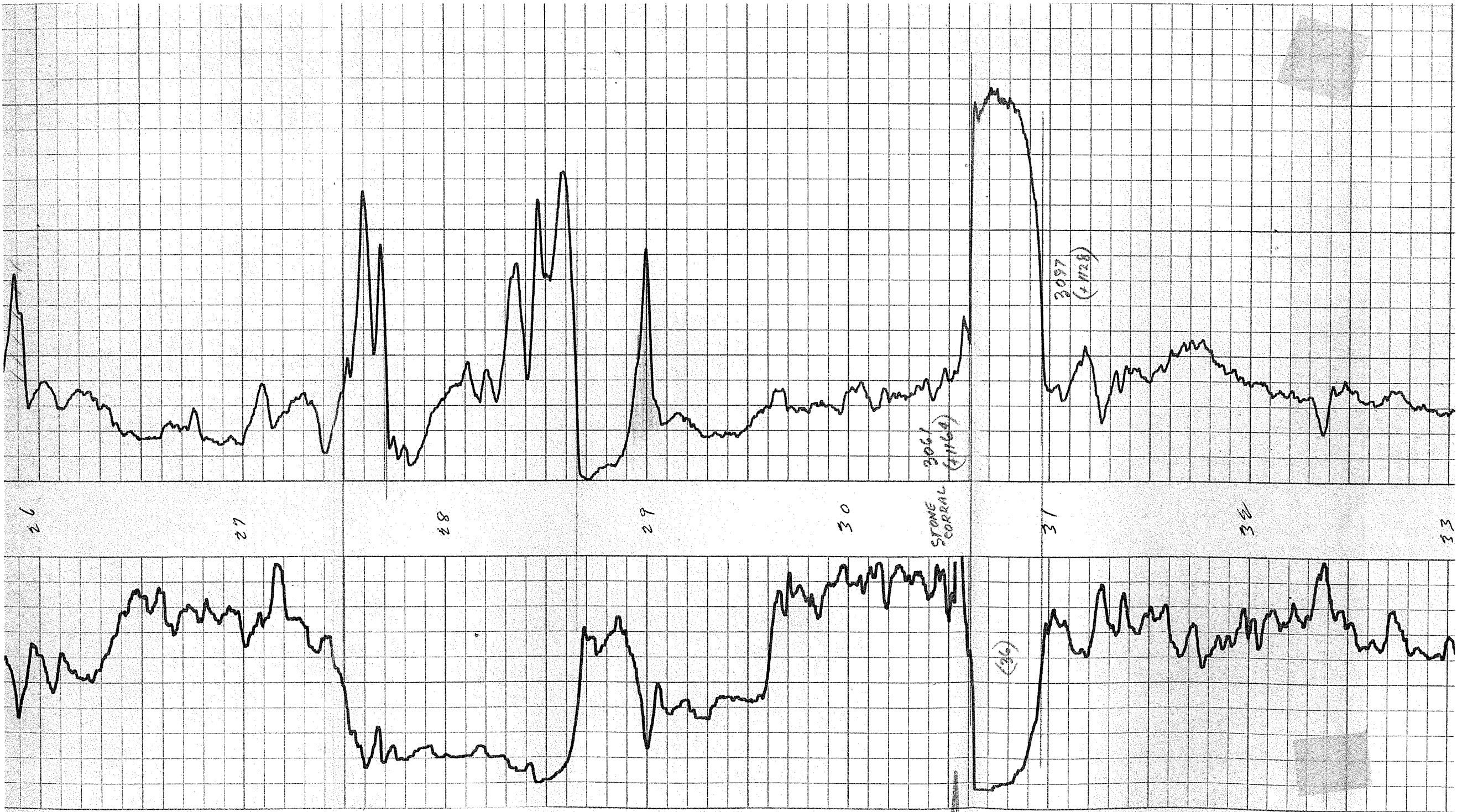
11

12





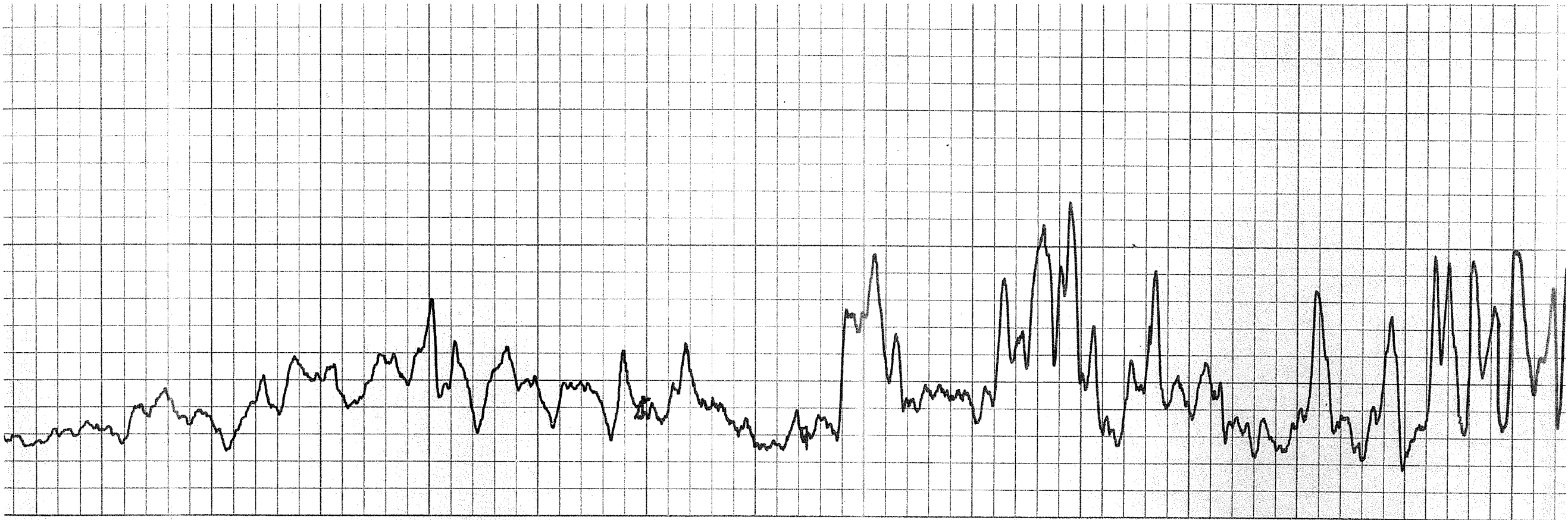




STONE  
CORRAL  
2061  
(+1164)

2097  
(+1128)

(296)



34

35

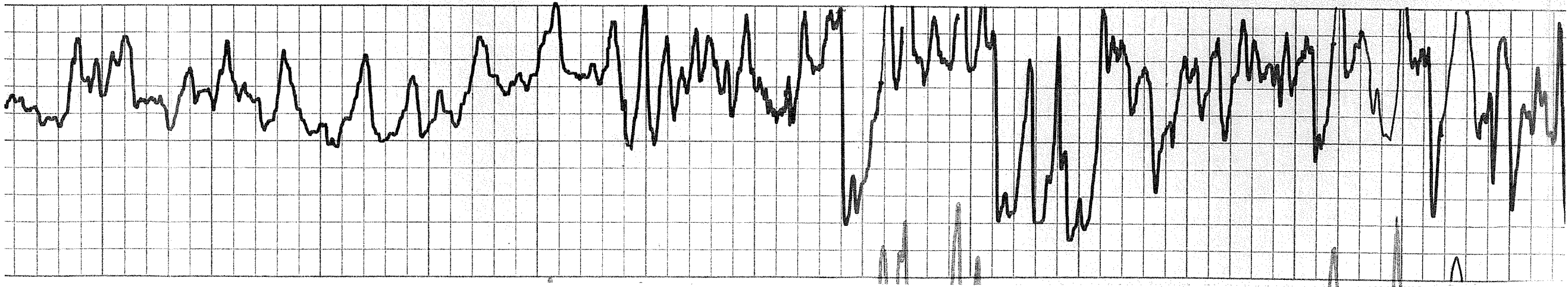
36

37

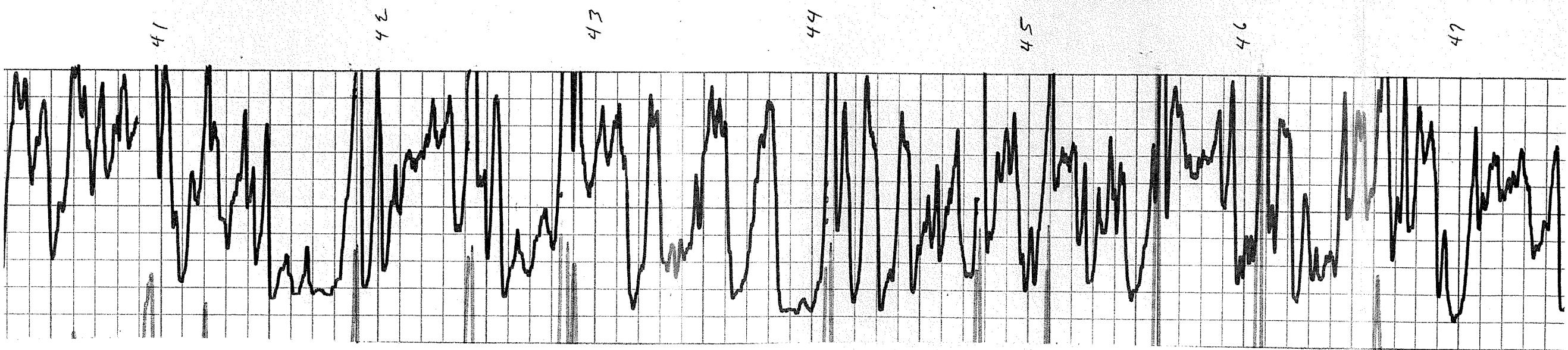
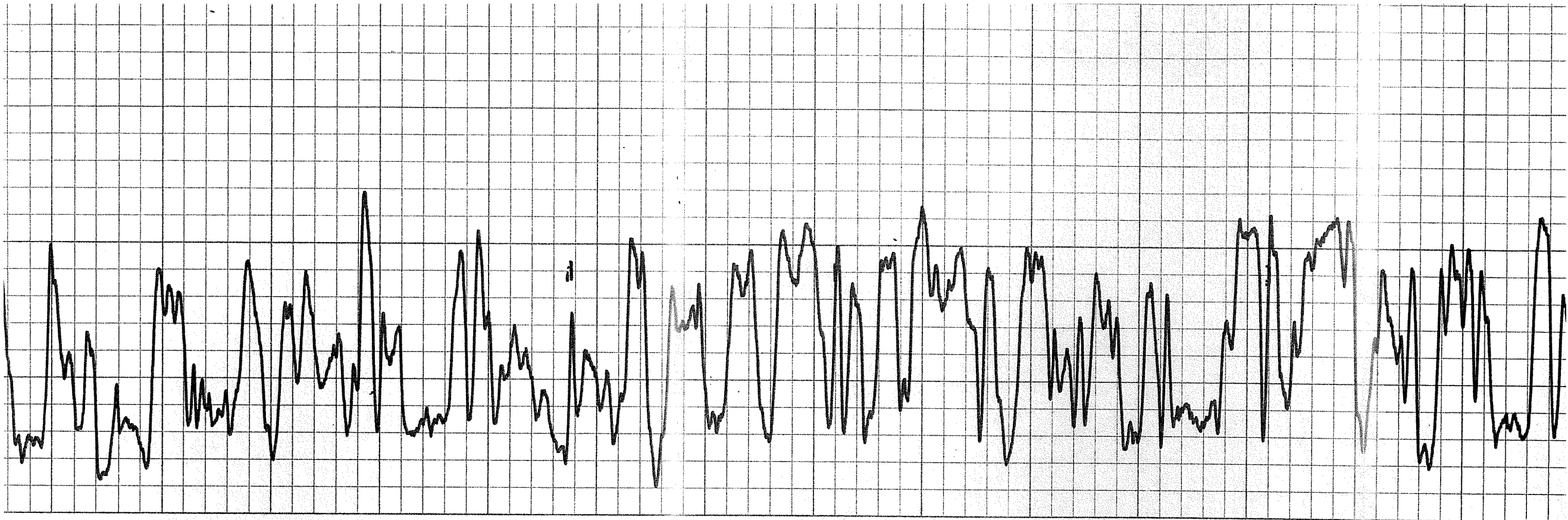
38

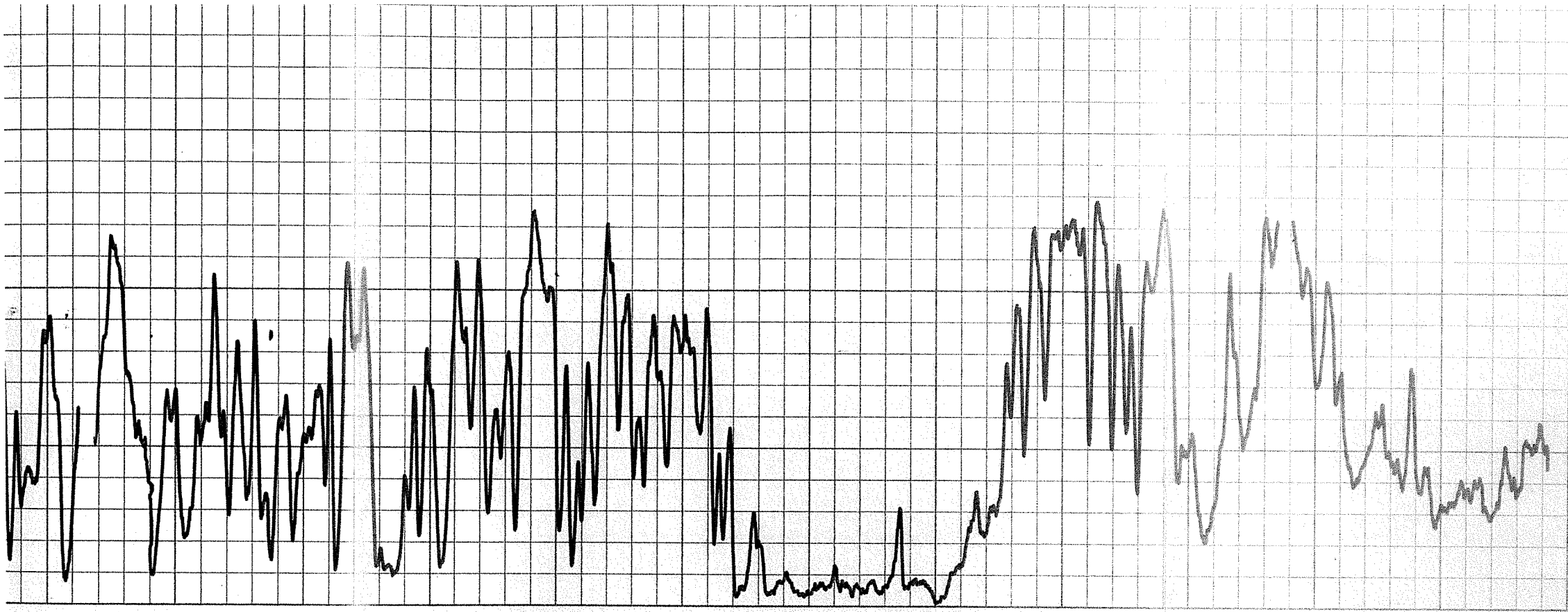
39

40









49

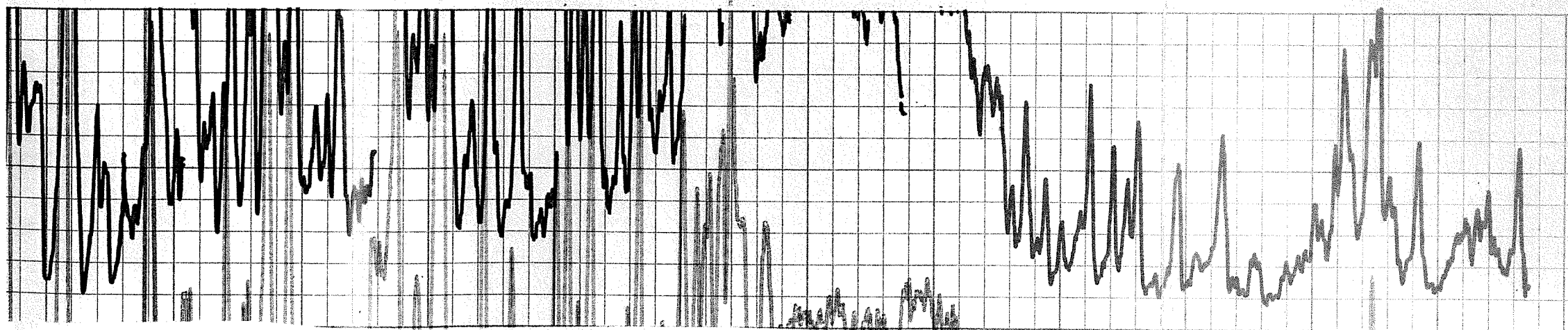
50

51

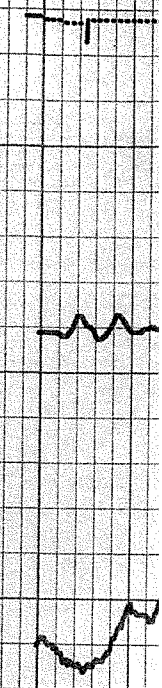
52

53

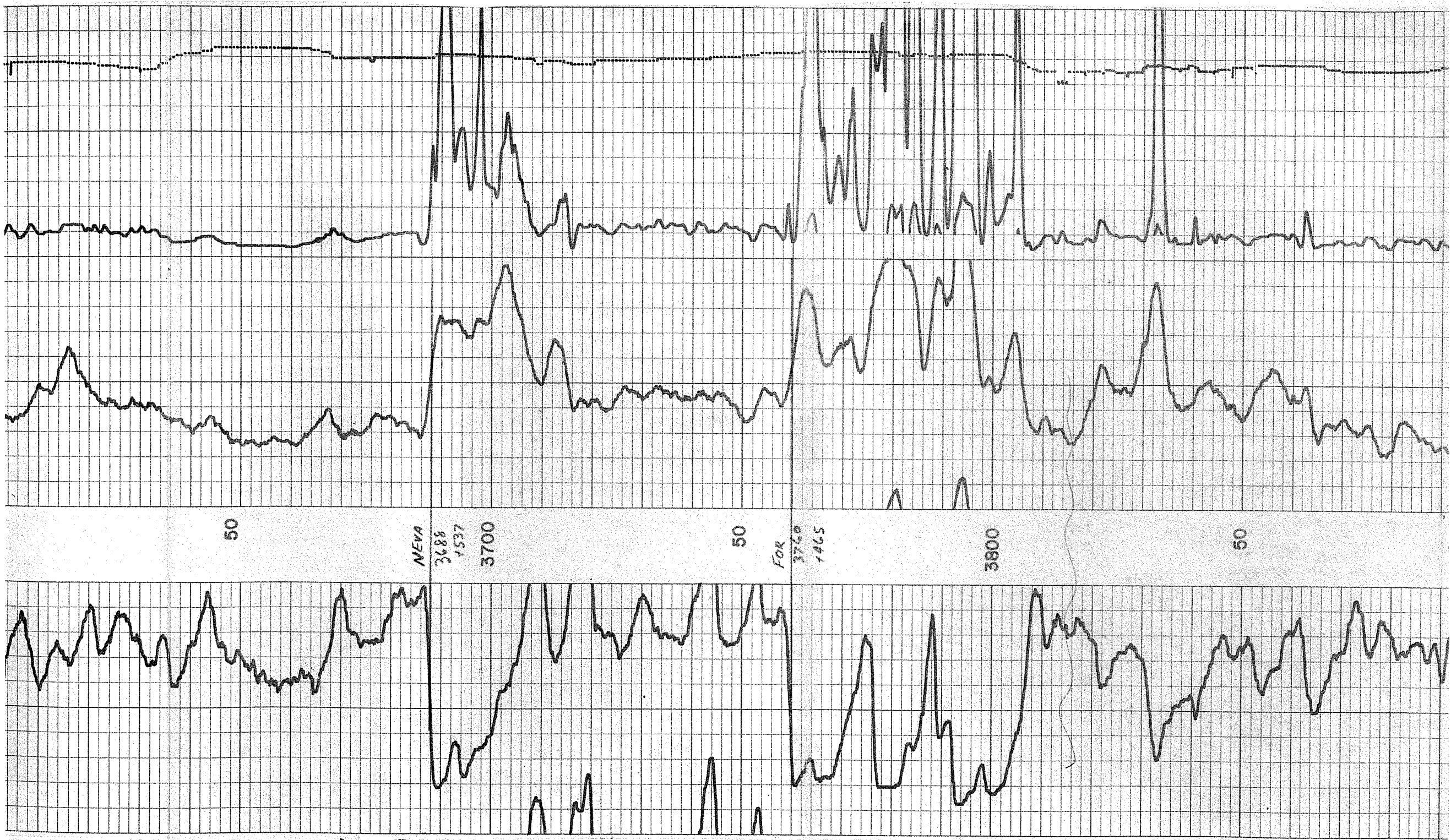
54



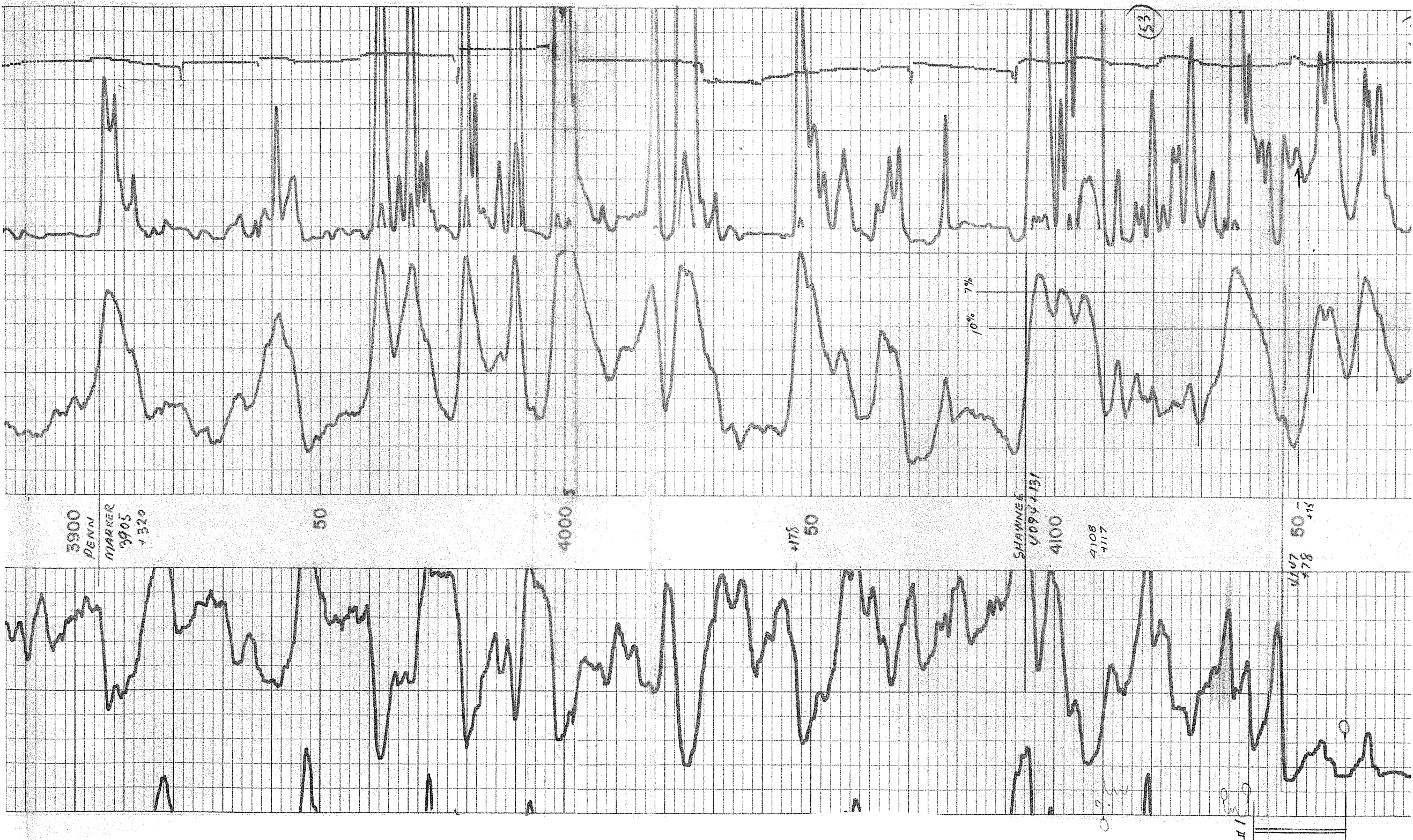
3600

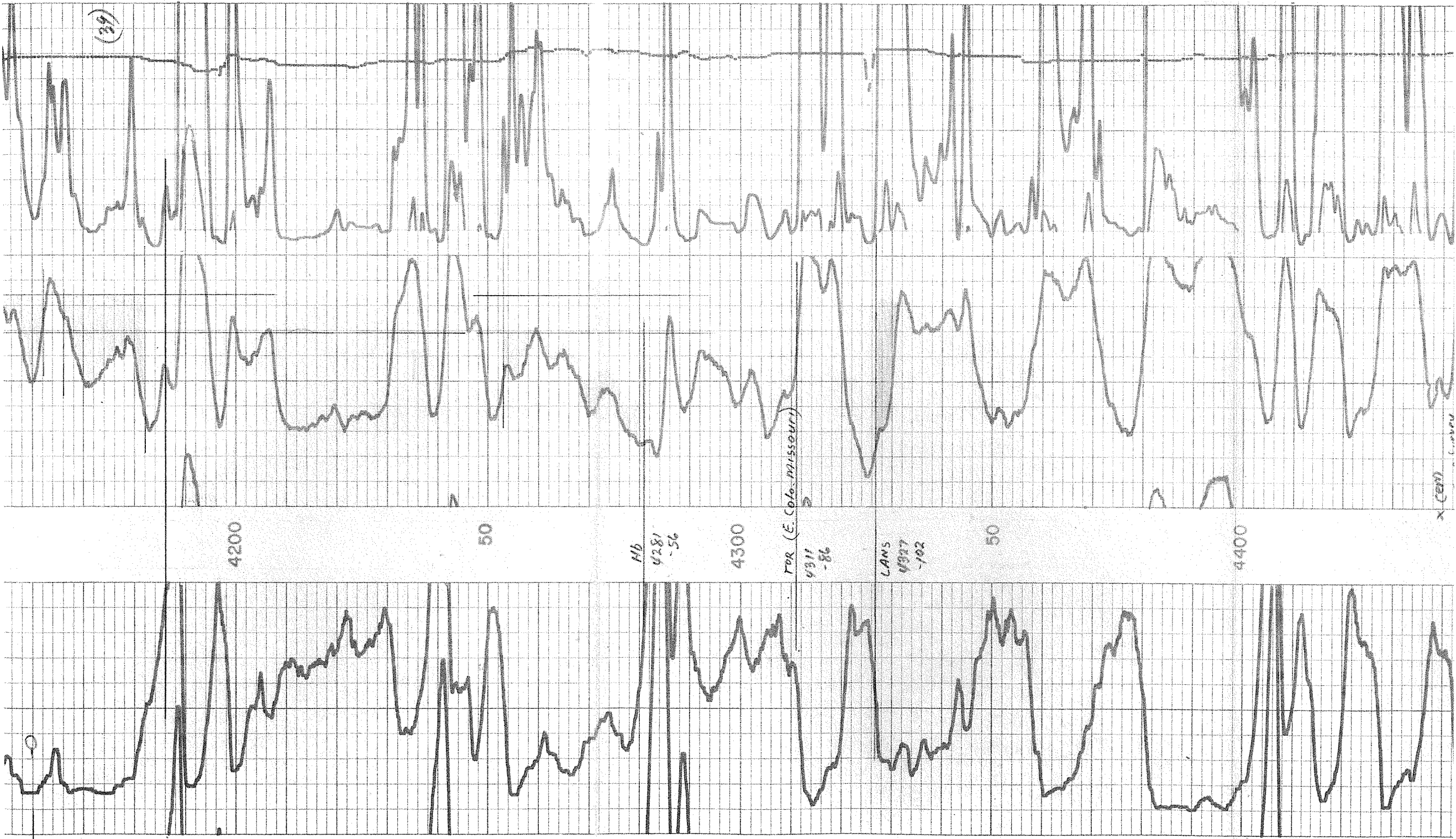




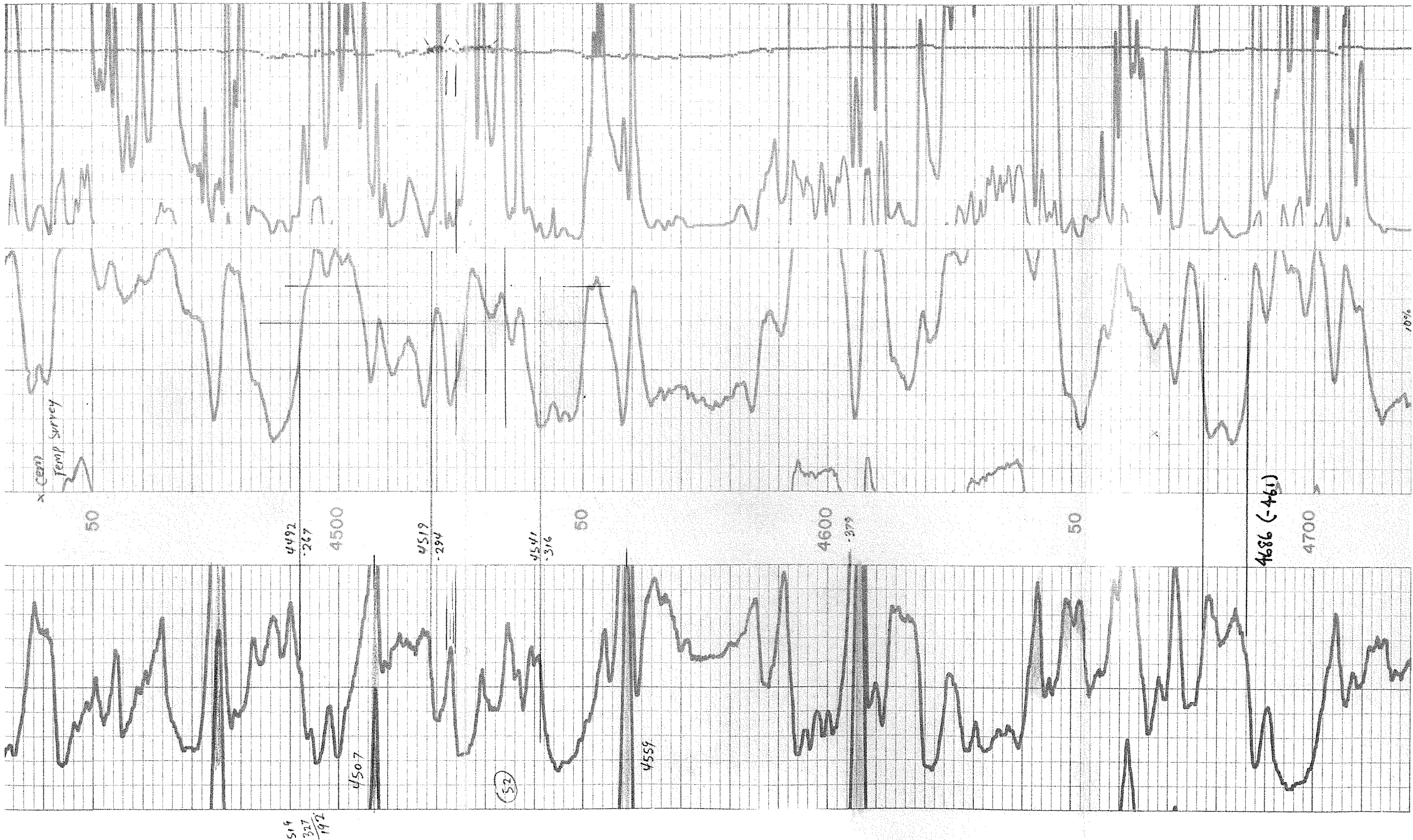




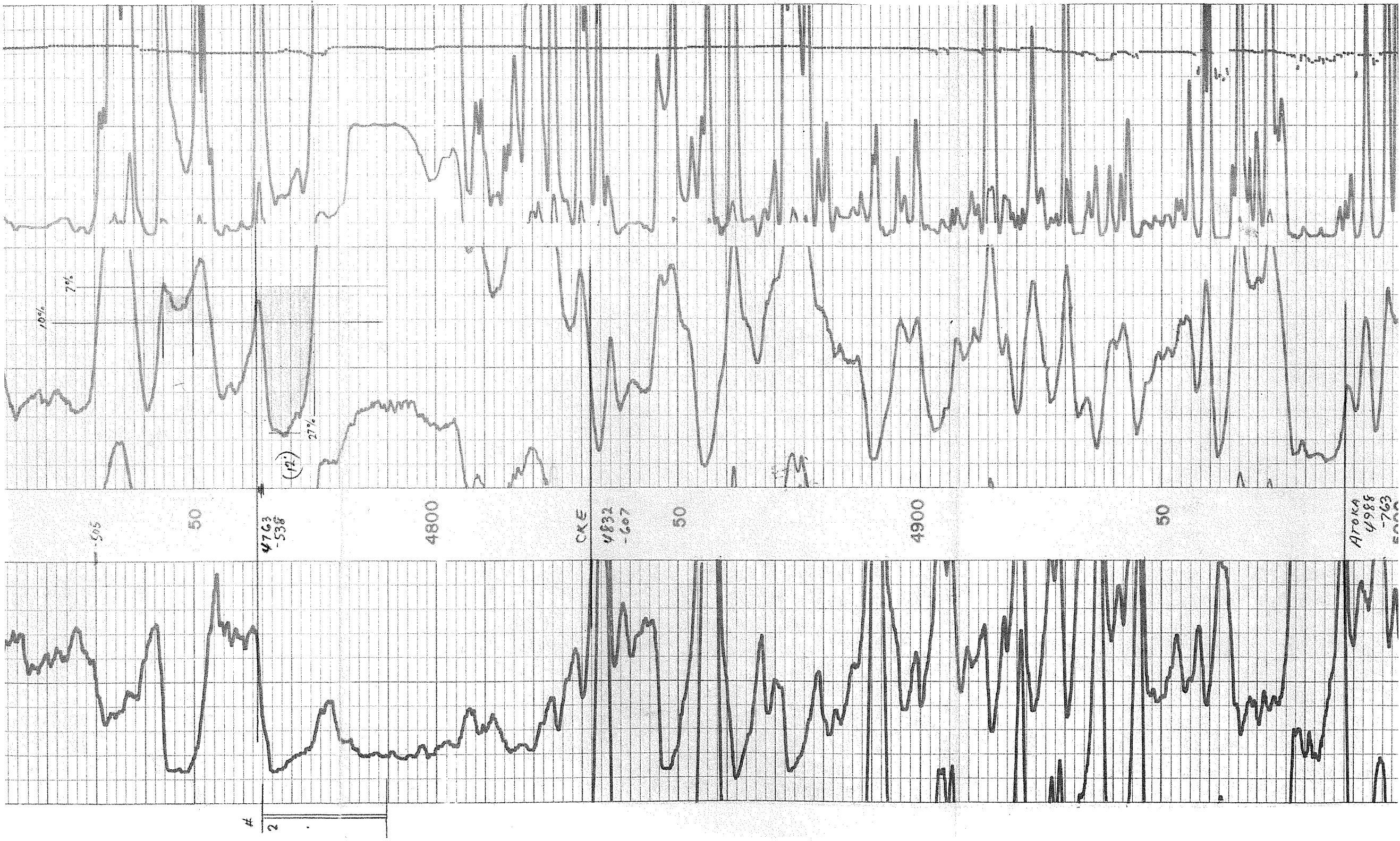


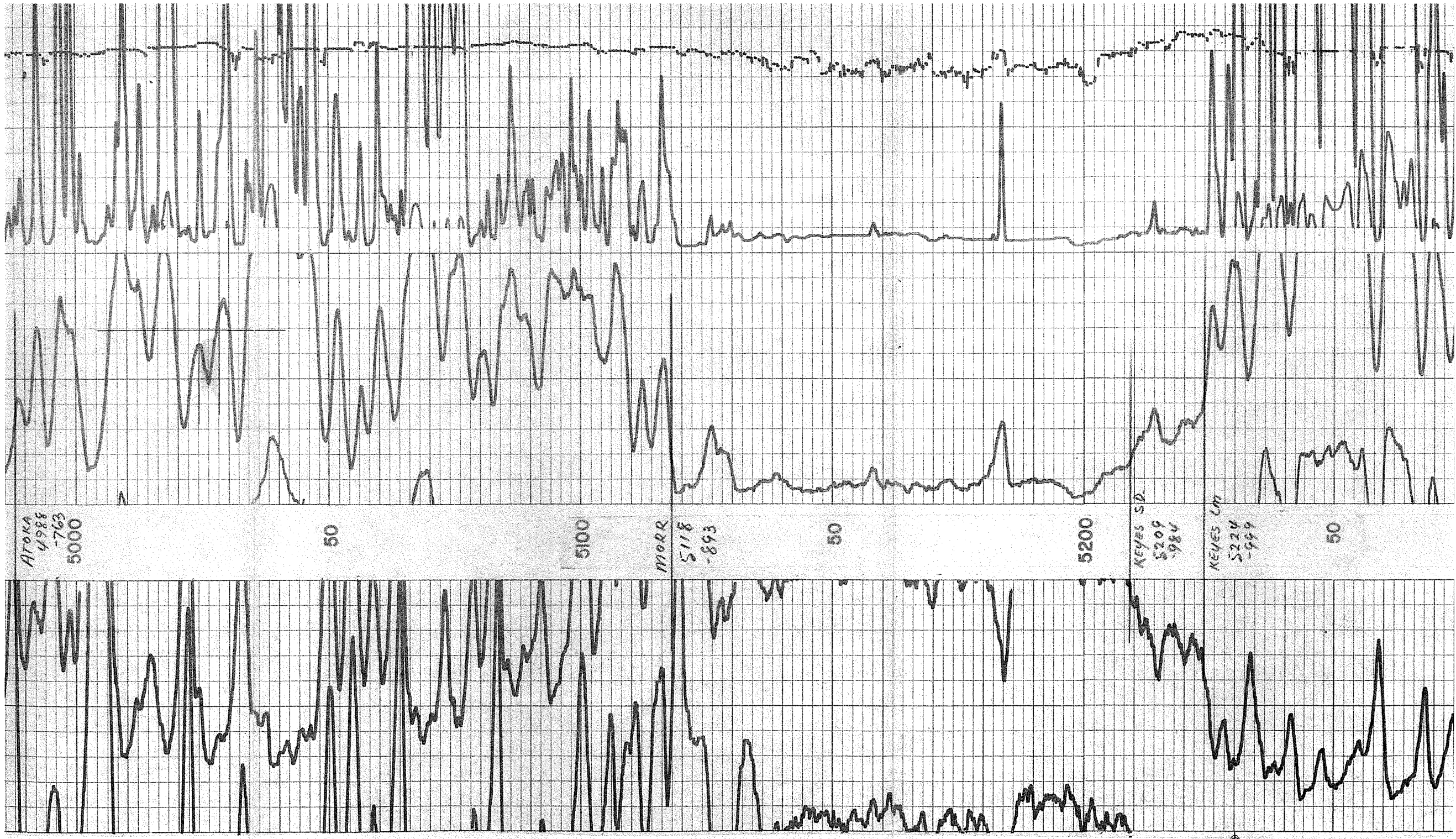












ATOKA  
4988  
-763  
5000

50

5100

MORR  
5118  
-893

50

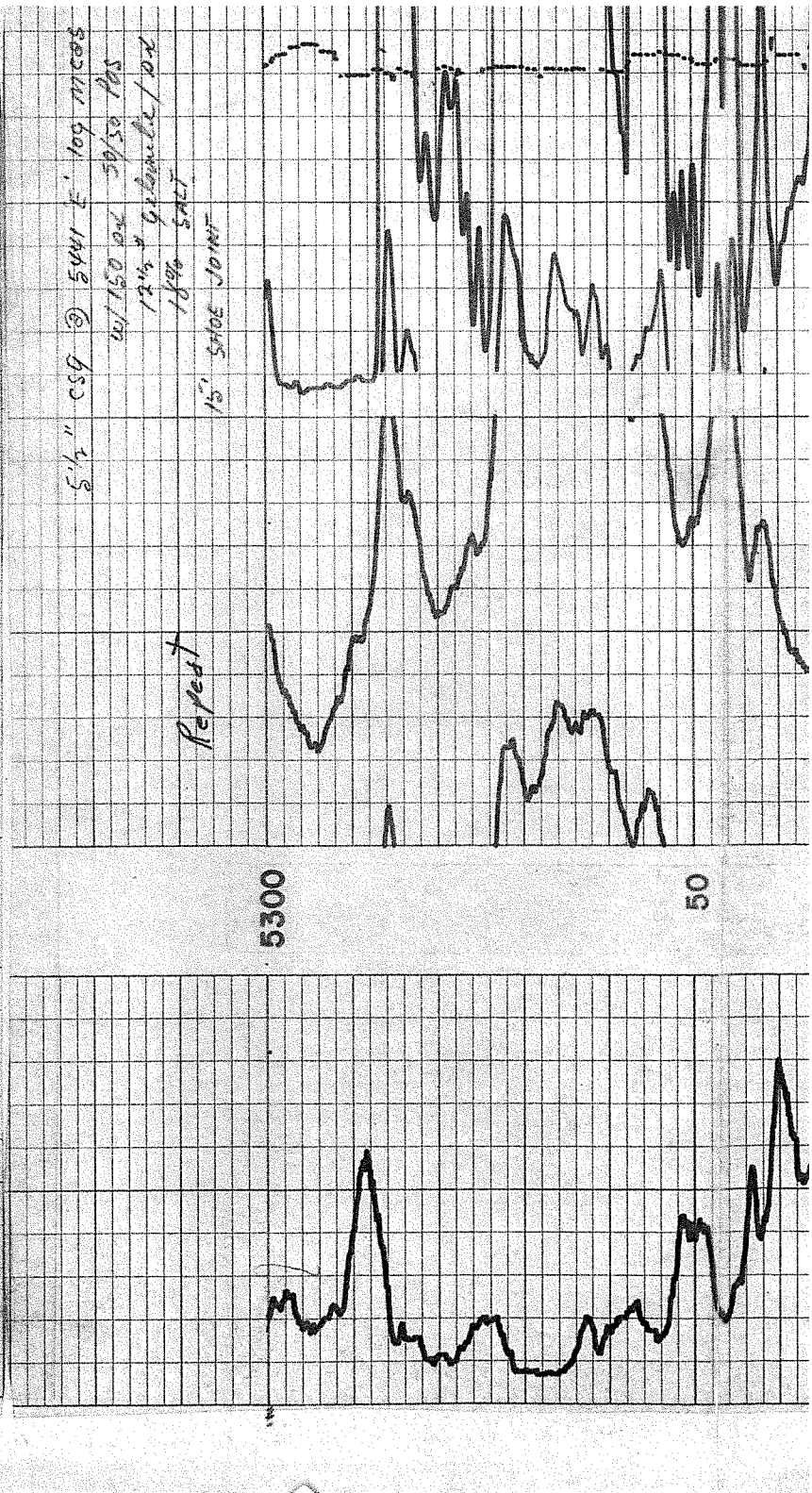
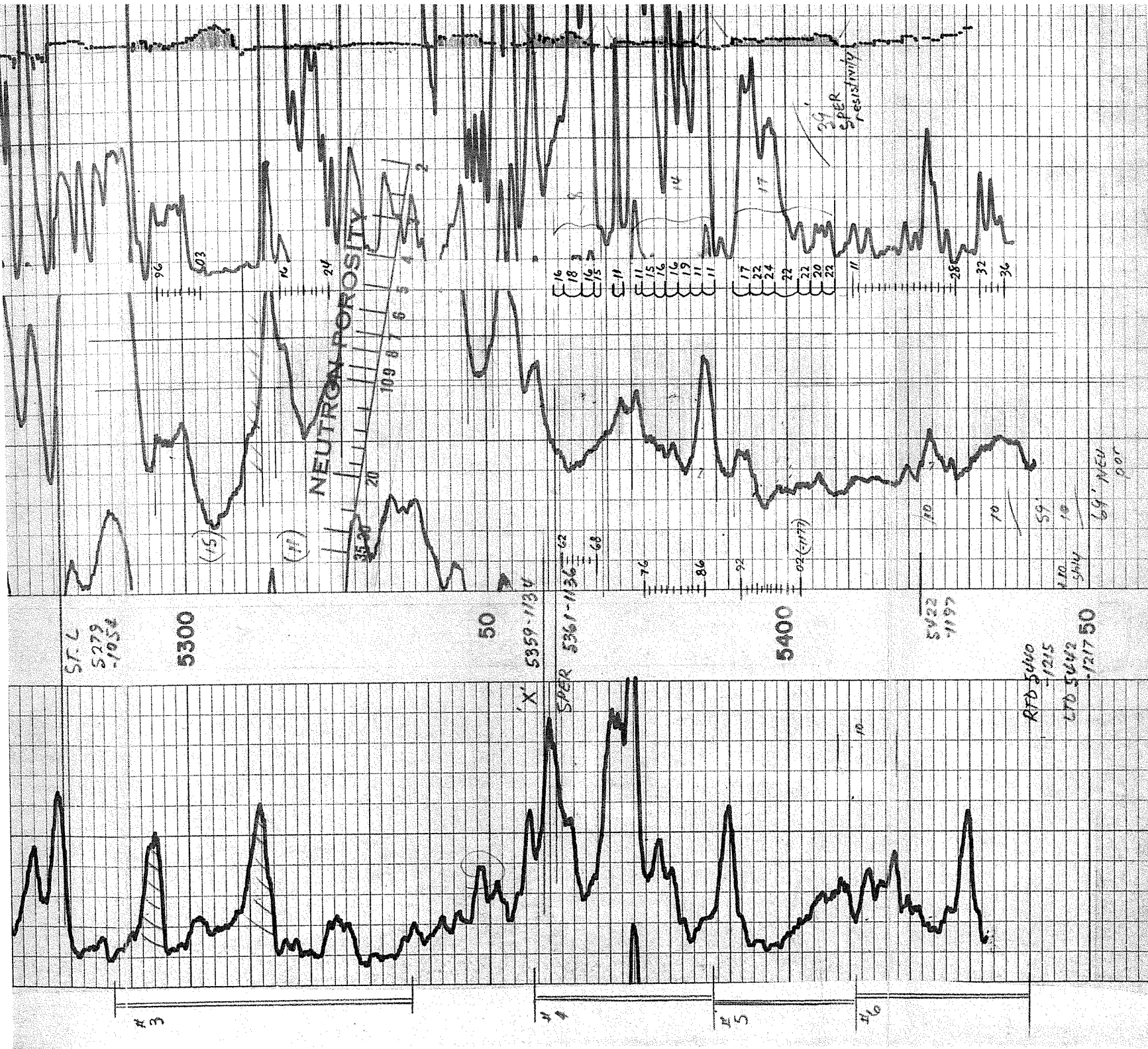
5200

KEYES SD.  
5209  
-984

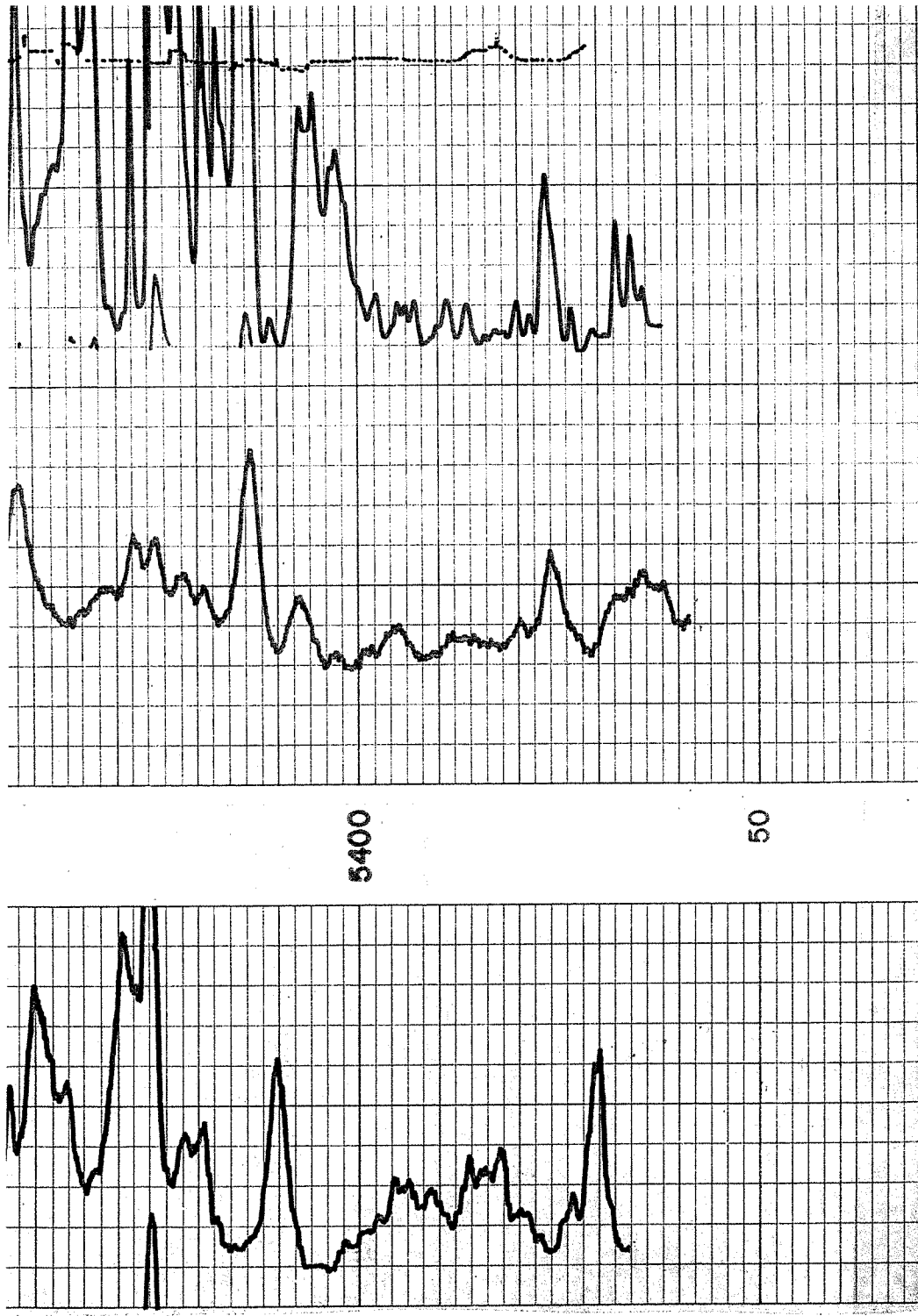
KEYES LM  
5224  
-999

50









5400

50

20	120	16	6
100	220	1600	50
		2600	500
GAMMA API Gamma Ray Units		NEUTRON API Neutron Units	
		GUARD Resistivity Ohms M <sup>2</sup> /M	

COMPANY Mull Oil Co

WELL No. 1 Crosby

LOCATION NE-W-28-13<sup>2</sup> 44

COUNTY Cherokee Co. Ga.

DATE 5-20-73

T.D. DRILLER 5440

T.D. REACHED 5442

T.D. LOGGED 5441