

# *Inspection Photos*

*API#057-06625*

*Operator: Gulf Exploration*

*Insp#: 692402693*

*Insp Date: 11/19/20*



**COLORADO**  
Oil & Gas Conservation  
Commission  
Department of Natural Resources



**Photo#1:**

Overview of Location from Northwest corner to Southeast. Wattles are not properly positioned or installed with good engineering practices. Lack of uniform mulch application.

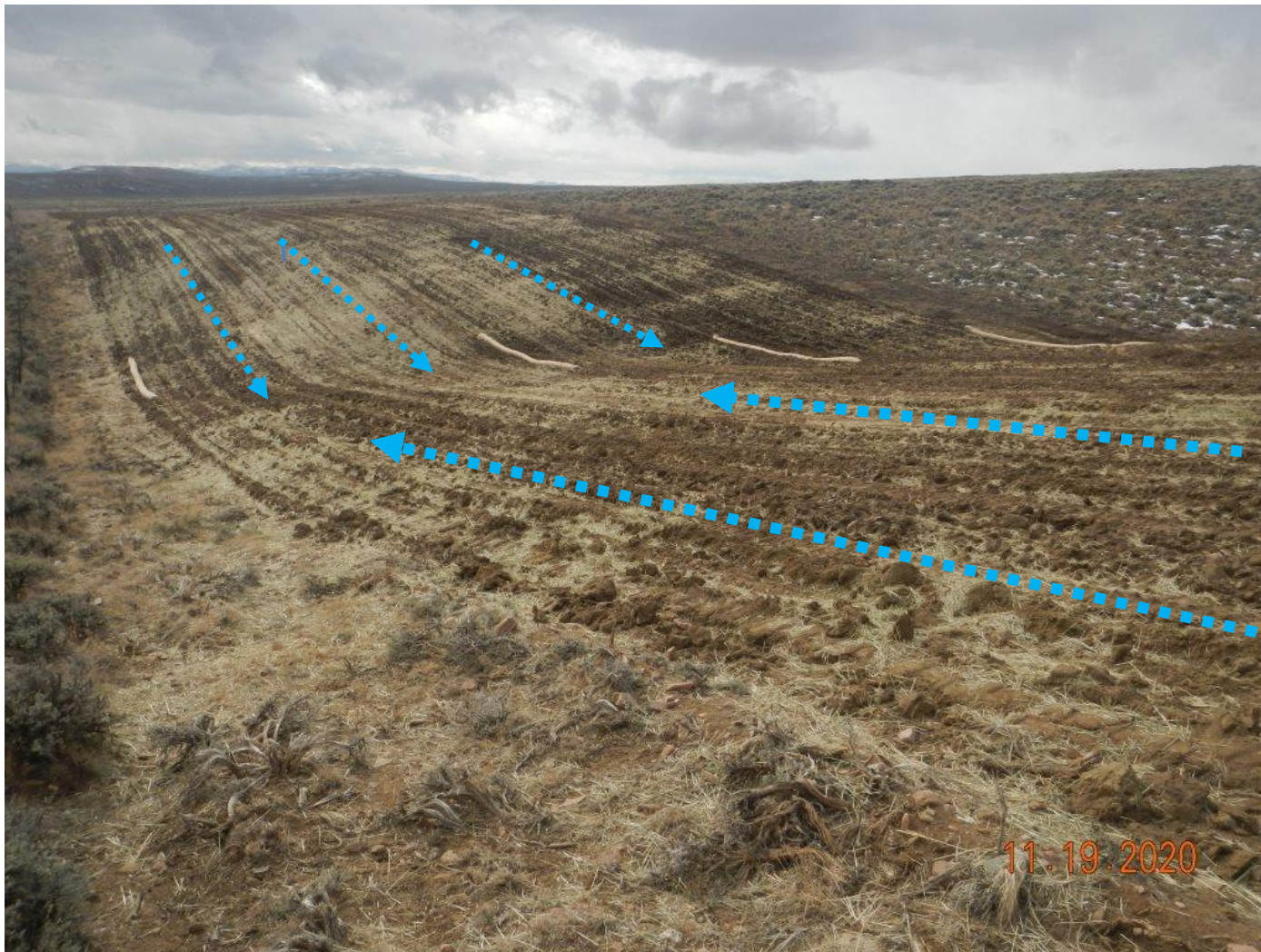
November 19, 2020



**COLORADO**  
Oil & Gas Conservation  
Commission  
Department of Natural Resources

Inspection Photos: Gulf Ex PA Eagle Hill API#057-06625





Photo#2:

Swale portion of access road; view to Southwest. No BMPs installed across swale slopes to control SW flowing down channels created by ripping. Blue arrows indicate stormwater flow direction.

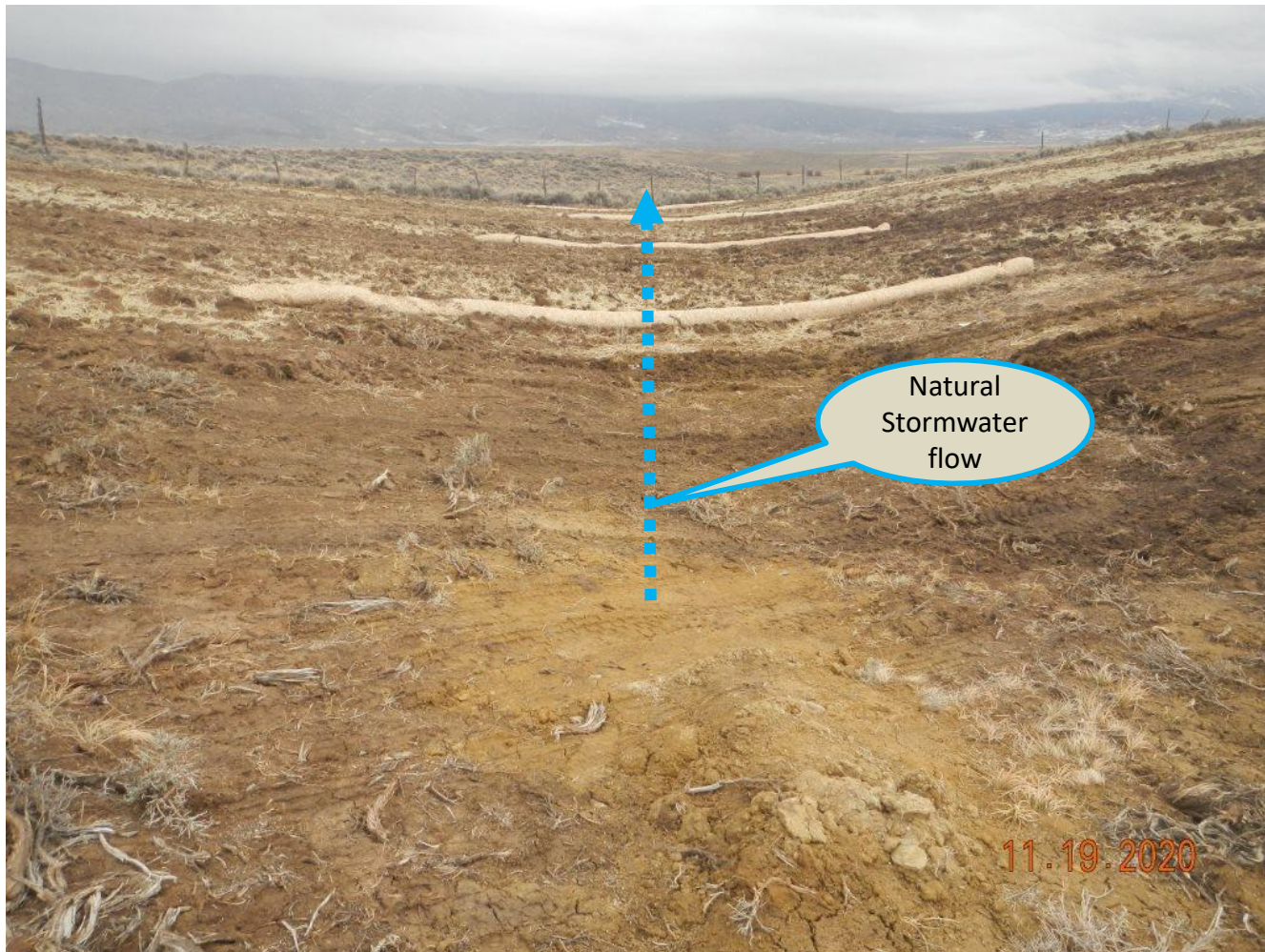
November 19, 2020



**COLORADO**  
Oil & Gas Conservation  
Commission  
Department of Natural Resources

Inspection Photos: Gulf Ex PA Eagle Hill API#057-06625





Photo#3:

At bottom of swale (see overview in Photo#2) stormwater pathway is interrupted. Properly engineered BMPs with inlet, and outlet pathway are needed to return natural drainage that existed prior to Oil & Gas disturbance.

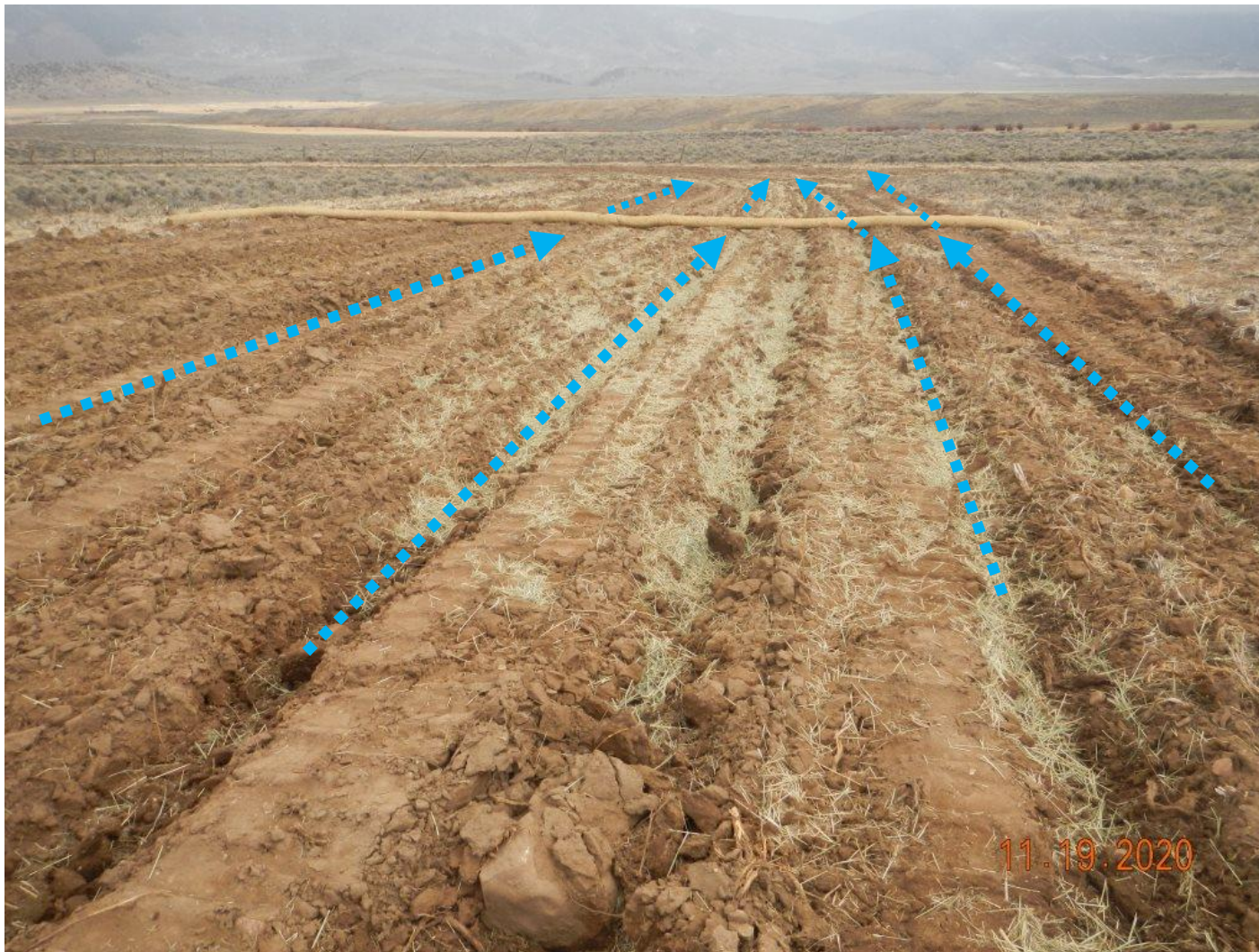
November 19, 2020



**COLORADO**  
Oil & Gas Conservation  
Commission  
Department of Natural Resources

Inspection Photos: Gulf Ex PA Eagle Hill API#057-06625





Photo#4:

View along access road to NE. Wattle has been improperly installed. SW will flow under the wattles along the ripping channels. Blue arrows indicate stormwater flow.

November 19, 2020



**COLORADO**  
Oil & Gas Conservation  
Commission  
Department of Natural Resources

Inspection Photos: Gulf Ex PA Eagle Hill API#057-06625





Photo#5:  
View along West perimeter of Location; improperly positioned and installed wattle. Blue arrows indicate stormwater flow under the wattle.



Photo#6:  
View along West perimeter of Location; improperly positioned and installed wattle.

November 19, 2020





**Photo#7:**  
Showing de-compaction depth; Shovel penetrated to 12”.



**Photo#8:**  
Showing Improper seedbed preparation and stabilization.

November 19, 2020



**COLORADO**  
Oil & Gas Conservation  
Commission  
Department of Natural Resources

Inspection Photos: Gulf Ex PA Eagle Hill API#057-06625