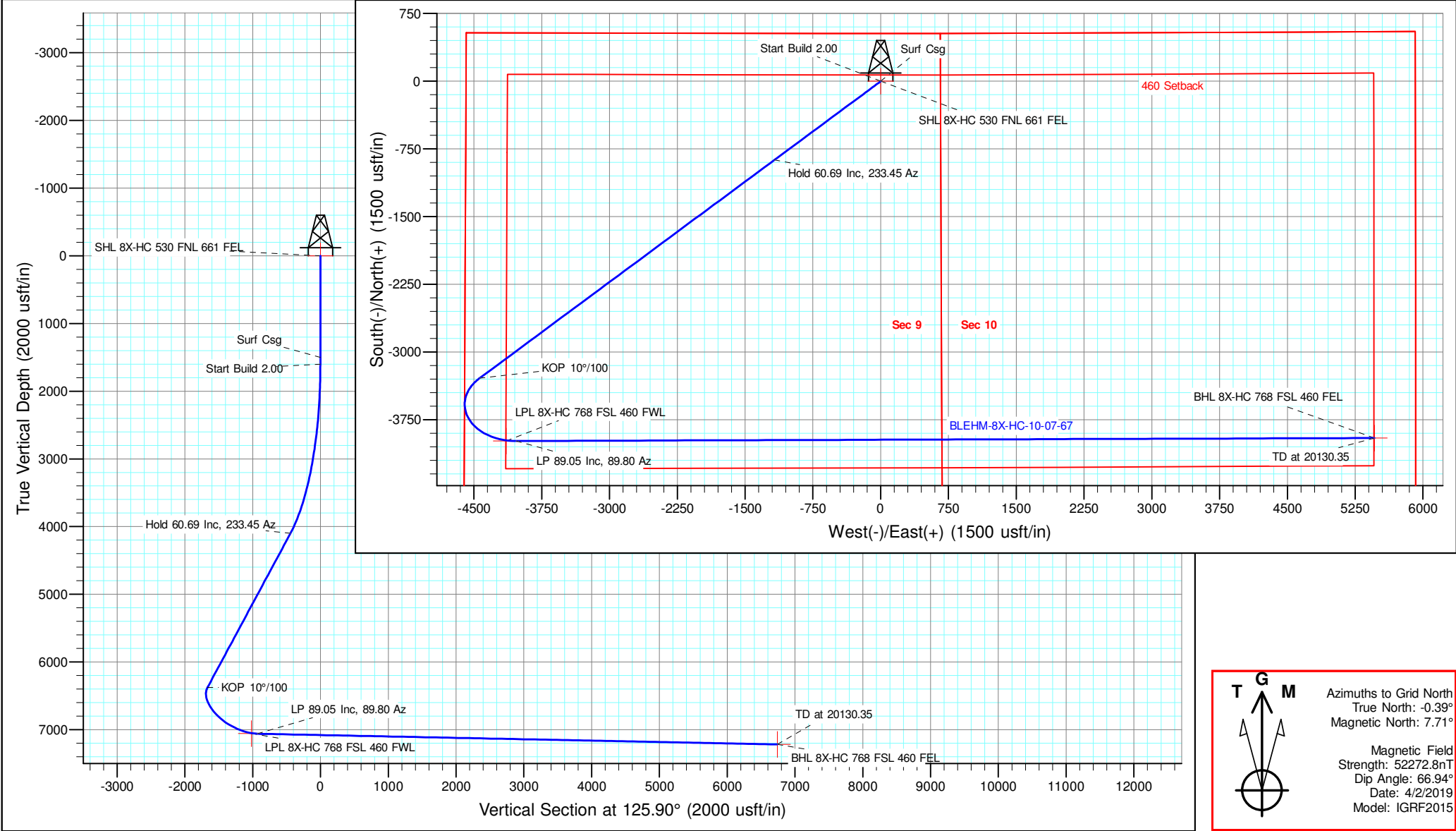


| | | |
|---|---|-------------------------------|
| Well Name: BLEHM-8X-HC-10-07-67 | Project Name: Sec. 9-T7N-R67W | Pad Name: BLEHM Pad |
|---|---|-------------------------------|

| ANNOTATIONS | | | | | | | | | |
|-------------|-------|--------|---------|----------|----------|----------|-----------|---------------------------|--|
| MD | Inc | Azi | TVD | +N/-S | +E/-W | Vsect | Departure | Annotation | |
| 1500.00 | 0.00 | 0.00 | 1500.00 | 0.00 | 0.00 | 0.00 | 0.00 | Surf Csg | |
| 1600.00 | 0.00 | 0.00 | 1600.00 | 0.00 | 0.00 | 0.00 | 0.00 | Start Build 2.00 | |
| 4634.71 | 60.69 | 233.45 | 4098.15 | -871.01 | -1174.91 | -441.03 | 1462.56 | Hold 60.69 Inc, 233.45 Az | |
| 9293.69 | 60.69 | 233.45 | 6378.58 | -3290.53 | -4438.60 | -1666.12 | 5525.29 | KOP 10°/100 | |
| 10633.24 | 89.05 | 89.80 | 7061.00 | -3986.00 | -4035.00 | -931.38 | 6805.25 | LP 89.05 Inc, 89.80 Az | |
| 20130.35 | 89.05 | 89.80 | 7219.00 | -3953.00 | 5460.74 | 6741.36 | 16301.05 | TD at 20130.35 | |

| Geodetic Datum: | Elevation: |
|--|---|
| North American Datum 1983 US State Plane 1983, Colorado Northern Zone | Ground Elevation: 5088.00 KB Elevation: KB @ 5115.00usft |

| DESIGN TARGET DETAILS | | | | | | | | | |
|---------------------------|---------|----------|----------|-------------|-------------|-----------|-------------|-------|--|
| Name | TVD | +N/-S | +E/-W | Northing | Easting | Latitude | Longitude | Shape | |
| SHL 8X-HC 530 FNL 661 FEL | 0.00 | 0.00 | 0.00 | 1459999.561 | 3169121.505 | 40.594503 | -104.891012 | Point | |
| LPL 8X-HC 768 FSL 460 FWL | 7059.00 | -3986.79 | -4144.06 | 1456012.774 | 3164977.448 | 40.583637 | -104.906030 | Point | |
| BHL 8X-HC 768 FSL 460 FEL | 7219.00 | -3953.00 | 5460.74 | 1456046.558 | 3174582.249 | 40.583548 | -104.871450 | Point | |



NICKEL ROAD

O P E R A T I N G

Nickel Road Operating

Sec. 9-T7N-R67W

BLEHM Pad

BLEHM-8X-HC-10-07-67

Wellbore #1

Plan: Plan #2

Standard Planning Report - Geographic

20 July, 2020

| | | | |
|------------------|----------------------------|-------------------------------------|---------------------------|
| Database: | EDM 5000.15 Single User Db | Local Co-ordinate Reference: | Well BLEHM-8X-HC-10-07-67 |
| Company: | Nickel Road Operating | TVD Reference: | KB @ 5115.00usft |
| Project: | Sec. 9-T7N-R67W | MD Reference: | KB @ 5115.00usft |
| Site: | BLEHM Pad | North Reference: | Grid |
| Well: | BLEHM-8X-HC-10-07-67 | Survey Calculation Method: | Minimum Curvature |
| Wellbore: | Wellbore #1 | | |
| Design: | Plan #2 | | |

| | | | |
|--------------------|----------------------------------|----------------------|----------------|
| Project | Sec. 9-T7N-R67W, Weld County, CO | | |
| Map System: | US State Plane 1983 | System Datum: | Mean Sea Level |
| Geo Datum: | North American Datum 1983 | | |
| Map Zone: | Colorado Northern Zone | | |

| | | | | | |
|-----------------------|-----------|--------------|--------------------|-------------------|-------------|
| Site | | BLEHM Pad | | | |
| Site Position: | | Northing: | 1,458,460.000 usft | Latitude: | 40.590318 |
| From: | Lat/Long | Easting: | 3,166,936.305 usft | Longitude: | -104.898918 |
| Position Uncertainty: | 0.00 usft | Slot Radius: | 13-3/16 " | Grid Convergence: | 0.39 ° |

| | | | | | | |
|----------------------|----------------------|-----------|---------------------|--------------------|---------------|---------------|
| Well | BLEHM-8X-HC-10-07-67 | | | | | |
| Well Position | +N/-S | 0.00 usft | Northing: | 1,459,999.561 usft | Latitude: | 40.594503 |
| | +E/-W | 0.00 usft | Easting: | 3,169,121.505 usft | Longitude: | -104.891012 |
| Position Uncertainty | | 0.00 usft | Wellhead Elevation: | | Ground Level: | 5,088.00 usft |

| | | | | | |
|------------------|-------------------|--------------------|------------------------|----------------------|----------------------------|
| Wellbore | Wellbore #1 | | | | |
| Magnetics | Model Name | Sample Date | Declination (°) | Dip Angle (°) | Field Strength (nT) |
| | IGRF2015 | 4/2/2019 | 8.10 | 66.94 | 52,272.84637453 |

| | | | | |
|--------------------------|--------------------------------|---------------------|----------------------|----------------------|
| Design | Plan #2 | | | |
| Audit Notes: | | | | |
| Version: | Phase: | PLAN | Tie On Depth: | 0.00 |
| Vertical Section: | Depth From (TVD) (usft) | +N/-S (usft) | +E/-W (usft) | Direction (°) |
| | 0.00 | 0.00 | 0.00 | 125.90 |

| | | | | |
|---------------------------------|------------------------|---------------------------------|---------------------|----------------|
| Plan Survey Tool Program | Date | 7/20/2020 | | |
| Depth From (usft) | Depth To (usft) | Survey (Wellbore) | Tool Name | Remarks |
| 1 | 0.00 | 20,130.35 Plan #2 (Wellbore #1) | MWD | |
| | | | OWSG MWD - Standard | |

| | | | | | | | | | | |
|------------------------------|------------------------|--------------------|------------------------------|---------------------|---------------------|--------------------------------|-------------------------------|------------------------------|----------------|-------------------|
| Plan Sections | | | | | | | | | | |
| Measured Depth (usft) | Inclination (°) | Azimuth (°) | Vertical Depth (usft) | +N/-S (usft) | +E/-W (usft) | Dogleg Rate (°/100usft) | Build Rate (°/100usft) | Turn Rate (°/100usft) | TFO (°) | Target |
| 0.00 | 0.00 | 0.00 | 0.00 | 0.00 | 0.00 | 0.00 | 0.00 | 0.00 | 0.00 | |
| 1,600.00 | 0.00 | 0.00 | 1,600.00 | 0.00 | 0.00 | 0.00 | 0.00 | 0.00 | 0.00 | |
| 4,634.71 | 60.69 | 233.45 | 4,098.15 | -871.01 | -1,174.91 | 2.00 | 2.00 | 0.00 | 233.45 | |
| 9,293.69 | 60.69 | 233.45 | 6,378.58 | -3,290.53 | -4,438.60 | 0.00 | 0.00 | 0.00 | 0.00 | |
| 10,633.24 | 89.05 | 89.80 | 7,061.00 | -3,986.00 | -4,035.00 | 10.00 | 2.12 | -10.72 | -124.59 | |
| 20,130.35 | 89.05 | 89.80 | 7,219.00 | -3,953.00 | 5,460.74 | 0.00 | 0.00 | 0.00 | 65.60 | BHL 8X-HC 768 FSL |

| | | | |
|------------------|----------------------------|-------------------------------------|---------------------------|
| Database: | EDM 5000.15 Single User Db | Local Co-ordinate Reference: | Well BLEHM-8X-HC-10-07-67 |
| Company: | Nickel Road Operating | TVD Reference: | KB @ 5115.00usft |
| Project: | Sec. 9-T7N-R67W | MD Reference: | KB @ 5115.00usft |
| Site: | BLEHM Pad | North Reference: | Grid |
| Well: | BLEHM-8X-HC-10-07-67 | Survey Calculation Method: | Minimum Curvature |
| Wellbore: | Wellbore #1 | | |
| Design: | Plan #2 | | |

| Planned Survey | | | | | | | | | |
|----------------------------------|-----------------|-------------|-----------------------|--------------|--------------|---------------------|--------------------|-----------|-------------|
| Measured Depth (usft) | Inclination (°) | Azimuth (°) | Vertical Depth (usft) | +N/-S (usft) | +E/-W (usft) | Map Northing (usft) | Map Easting (usft) | Latitude | Longitude |
| 0.00 | 0.00 | 0.00 | 0.00 | 0.00 | 0.00 | 1,459,999.561 | 3,169,121.505 | 40.594503 | -104.891012 |
| SHL 8X-HC 530 FNL 661 FEL | | | | | | | | | |
| 100.00 | 0.00 | 0.00 | 100.00 | 0.00 | 0.00 | 1,459,999.561 | 3,169,121.505 | 40.594503 | -104.891012 |
| 200.00 | 0.00 | 0.00 | 200.00 | 0.00 | 0.00 | 1,459,999.561 | 3,169,121.505 | 40.594503 | -104.891012 |
| 300.00 | 0.00 | 0.00 | 300.00 | 0.00 | 0.00 | 1,459,999.561 | 3,169,121.505 | 40.594503 | -104.891012 |
| 400.00 | 0.00 | 0.00 | 400.00 | 0.00 | 0.00 | 1,459,999.561 | 3,169,121.505 | 40.594503 | -104.891012 |
| 500.00 | 0.00 | 0.00 | 500.00 | 0.00 | 0.00 | 1,459,999.561 | 3,169,121.505 | 40.594503 | -104.891012 |
| 600.00 | 0.00 | 0.00 | 600.00 | 0.00 | 0.00 | 1,459,999.561 | 3,169,121.505 | 40.594503 | -104.891012 |
| 700.00 | 0.00 | 0.00 | 700.00 | 0.00 | 0.00 | 1,459,999.561 | 3,169,121.505 | 40.594503 | -104.891012 |
| 800.00 | 0.00 | 0.00 | 800.00 | 0.00 | 0.00 | 1,459,999.561 | 3,169,121.505 | 40.594503 | -104.891012 |
| 900.00 | 0.00 | 0.00 | 900.00 | 0.00 | 0.00 | 1,459,999.561 | 3,169,121.505 | 40.594503 | -104.891012 |
| 1,000.00 | 0.00 | 0.00 | 1,000.00 | 0.00 | 0.00 | 1,459,999.561 | 3,169,121.505 | 40.594503 | -104.891012 |
| 1,100.00 | 0.00 | 0.00 | 1,100.00 | 0.00 | 0.00 | 1,459,999.561 | 3,169,121.505 | 40.594503 | -104.891012 |
| 1,200.00 | 0.00 | 0.00 | 1,200.00 | 0.00 | 0.00 | 1,459,999.561 | 3,169,121.505 | 40.594503 | -104.891012 |
| 1,300.00 | 0.00 | 0.00 | 1,300.00 | 0.00 | 0.00 | 1,459,999.561 | 3,169,121.505 | 40.594503 | -104.891012 |
| 1,400.00 | 0.00 | 0.00 | 1,400.00 | 0.00 | 0.00 | 1,459,999.561 | 3,169,121.505 | 40.594503 | -104.891012 |
| 1,500.00 | 0.00 | 0.00 | 1,500.00 | 0.00 | 0.00 | 1,459,999.561 | 3,169,121.505 | 40.594503 | -104.891012 |
| Surf Csg | | | | | | | | | |
| 1,600.00 | 0.00 | 0.00 | 1,600.00 | 0.00 | 0.00 | 1,459,999.561 | 3,169,121.505 | 40.594503 | -104.891012 |
| Start Build 2.00 | | | | | | | | | |
| 1,700.00 | 2.00 | 233.45 | 1,699.98 | -1.04 | -1.40 | 1,459,998.522 | 3,169,120.103 | 40.594500 | -104.891017 |
| 1,800.00 | 4.00 | 233.45 | 1,799.84 | -4.16 | -5.61 | 1,459,995.405 | 3,169,115.899 | 40.594492 | -104.891033 |
| 1,900.00 | 6.00 | 233.45 | 1,899.45 | -9.35 | -12.61 | 1,459,990.215 | 3,169,108.898 | 40.594478 | -104.891058 |
| 2,000.00 | 8.00 | 233.45 | 1,998.70 | -16.60 | -22.40 | 1,459,982.957 | 3,169,099.109 | 40.594458 | -104.891093 |
| 2,100.00 | 10.00 | 233.45 | 2,097.47 | -25.92 | -34.96 | 1,459,973.641 | 3,169,086.542 | 40.594432 | -104.891139 |
| 2,200.00 | 12.00 | 233.45 | 2,195.62 | -37.28 | -50.29 | 1,459,962.279 | 3,169,071.215 | 40.594402 | -104.891194 |
| 2,300.00 | 14.00 | 233.45 | 2,293.06 | -50.68 | -68.36 | 1,459,948.882 | 3,169,053.145 | 40.594365 | -104.891260 |
| 2,400.00 | 16.00 | 233.45 | 2,389.64 | -66.09 | -89.15 | 1,459,933.470 | 3,169,032.354 | 40.594323 | -104.891335 |
| 2,500.00 | 18.00 | 233.45 | 2,485.27 | -83.50 | -112.64 | 1,459,916.059 | 3,169,008.869 | 40.594276 | -104.891420 |
| 2,600.00 | 20.00 | 233.45 | 2,579.82 | -102.89 | -138.79 | 1,459,896.671 | 3,168,982.716 | 40.594223 | -104.891515 |
| 2,700.00 | 22.00 | 233.45 | 2,673.17 | -124.23 | -167.58 | 1,459,875.329 | 3,168,953.929 | 40.594165 | -104.891619 |
| 2,800.00 | 24.00 | 233.45 | 2,765.21 | -147.50 | -198.96 | 1,459,852.061 | 3,168,922.542 | 40.594102 | -104.891732 |
| 2,900.00 | 26.00 | 233.45 | 2,855.84 | -172.67 | -232.91 | 1,459,826.894 | 3,168,888.594 | 40.594033 | -104.891855 |
| 3,000.00 | 28.00 | 233.45 | 2,944.94 | -199.70 | -269.38 | 1,459,799.858 | 3,168,852.126 | 40.593960 | -104.891987 |
| 3,100.00 | 30.00 | 233.45 | 3,032.39 | -228.57 | -308.32 | 1,459,770.987 | 3,168,813.182 | 40.593881 | -104.892128 |
| 3,200.00 | 32.00 | 233.45 | 3,118.11 | -259.24 | -349.70 | 1,459,740.316 | 3,168,771.809 | 40.593798 | -104.892278 |
| 3,300.00 | 34.00 | 233.45 | 3,201.97 | -291.68 | -393.45 | 1,459,707.882 | 3,168,728.059 | 40.593710 | -104.892436 |
| 3,400.00 | 36.00 | 233.45 | 3,283.88 | -325.84 | -439.52 | 1,459,673.725 | 3,168,681.985 | 40.593617 | -104.892603 |
| 3,500.00 | 38.00 | 233.45 | 3,363.74 | -361.67 | -487.86 | 1,459,637.887 | 3,168,633.642 | 40.593519 | -104.892778 |
| 3,600.00 | 40.00 | 233.45 | 3,441.45 | -399.15 | -538.42 | 1,459,600.410 | 3,168,583.089 | 40.593417 | -104.892961 |
| 3,700.00 | 42.00 | 233.45 | 3,516.92 | -438.22 | -591.12 | 1,459,561.341 | 3,168,530.388 | 40.593311 | -104.893152 |
| 3,800.00 | 44.00 | 233.45 | 3,590.05 | -478.83 | -645.90 | 1,459,520.728 | 3,168,475.604 | 40.593201 | -104.893350 |
| 3,900.00 | 46.00 | 233.45 | 3,660.76 | -520.94 | -702.70 | 1,459,478.619 | 3,168,418.804 | 40.593086 | -104.893555 |
| 4,000.00 | 48.00 | 233.45 | 3,728.95 | -564.50 | -761.45 | 1,459,435.066 | 3,168,360.055 | 40.592968 | -104.893768 |
| 4,100.00 | 50.00 | 233.45 | 3,794.56 | -609.44 | -822.07 | 1,459,390.122 | 3,168,299.430 | 40.592846 | -104.893987 |
| 4,200.00 | 52.00 | 233.45 | 3,857.48 | -655.72 | -884.50 | 1,459,343.842 | 3,168,237.003 | 40.592720 | -104.894213 |
| 4,300.00 | 54.00 | 233.45 | 3,917.66 | -703.28 | -948.65 | 1,459,296.283 | 3,168,172.850 | 40.592590 | -104.894445 |
| 4,400.00 | 56.00 | 233.45 | 3,975.02 | -752.06 | -1,014.46 | 1,459,247.502 | 3,168,107.049 | 40.592458 | -104.894684 |
| 4,500.00 | 58.00 | 233.45 | 4,029.48 | -802.00 | -1,081.82 | 1,459,197.558 | 3,168,039.680 | 40.592322 | -104.894927 |
| 4,600.00 | 60.00 | 233.45 | 4,080.98 | -853.05 | -1,150.68 | 1,459,146.513 | 3,167,970.825 | 40.592183 | -104.895177 |
| 4,634.71 | 60.69 | 233.45 | 4,098.15 | -871.01 | -1,174.91 | 1,459,128.547 | 3,167,946.590 | 40.592134 | -104.895264 |
| Hold 60.69 Inc, 233.45 Az | | | | | | | | | |
| 4,700.00 | 60.69 | 233.45 | 4,130.11 | -904.92 | -1,220.65 | 1,459,094.642 | 3,167,900.857 | 40.592042 | -104.895430 |
| 4,800.00 | 60.69 | 233.45 | 4,179.06 | -956.85 | -1,290.70 | 1,459,042.710 | 3,167,830.805 | 40.591901 | -104.895683 |

| | | | |
|------------------|----------------------------|-------------------------------------|---------------------------|
| Database: | EDM 5000.15 Single User Db | Local Co-ordinate Reference: | Well BLEHM-8X-HC-10-07-67 |
| Company: | Nickel Road Operating | TVD Reference: | KB @ 5115.00usft |
| Project: | Sec. 9-T7N-R67W | MD Reference: | KB @ 5115.00usft |
| Site: | BLEHM Pad | North Reference: | Grid |
| Well: | BLEHM-8X-HC-10-07-67 | Survey Calculation Method: | Minimum Curvature |
| Wellbore: | Wellbore #1 | | |
| Design: | Plan #2 | | |

| Planned Survey | | | | | | | | | |
|-----------------------------|--------------------|----------------|-----------------------------|-----------------|-----------------|---------------------------|--------------------------|-----------|-------------|
| Measured Depth (usft) | Inclination (°) | Azimuth (°) | Vertical Depth (usft) | +N/-S (usft) | +E/-W (usft) | Map Northing (usft) | Map Easting (usft) | Latitude | Longitude |
| 4,900.00 | 60.69 | 233.45 | 4,228.00 | -1,008.78 | -1,360.75 | 1,458,990.778 | 3,167,760.753 | 40.591760 | -104.895937 |
| 5,000.00 | 60.69 | 233.45 | 4,276.95 | -1,060.72 | -1,430.80 | 1,458,938.845 | 3,167,690.702 | 40.591618 | -104.896190 |
| 5,100.00 | 60.69 | 233.45 | 4,325.90 | -1,112.65 | -1,500.85 | 1,458,886.913 | 3,167,620.650 | 40.591477 | -104.896444 |
| 5,200.00 | 60.69 | 233.45 | 4,374.84 | -1,164.58 | -1,570.91 | 1,458,834.981 | 3,167,550.598 | 40.591336 | -104.896697 |
| 5,300.00 | 60.69 | 233.45 | 4,423.79 | -1,216.51 | -1,640.96 | 1,458,783.048 | 3,167,480.547 | 40.591195 | -104.896951 |
| 5,400.00 | 60.69 | 233.45 | 4,472.74 | -1,268.44 | -1,711.01 | 1,458,731.116 | 3,167,410.495 | 40.591053 | -104.897204 |
| 5,500.00 | 60.69 | 233.45 | 4,521.69 | -1,320.38 | -1,781.06 | 1,458,679.184 | 3,167,340.443 | 40.590912 | -104.897458 |
| 5,600.00 | 60.69 | 233.45 | 4,570.63 | -1,372.31 | -1,851.11 | 1,458,627.251 | 3,167,270.392 | 40.590771 | -104.897711 |
| 5,700.00 | 60.69 | 233.45 | 4,619.58 | -1,424.24 | -1,921.16 | 1,458,575.319 | 3,167,200.340 | 40.590630 | -104.897965 |
| 5,800.00 | 60.69 | 233.45 | 4,668.53 | -1,476.17 | -1,991.22 | 1,458,523.387 | 3,167,130.288 | 40.590488 | -104.898218 |
| 5,900.00 | 60.69 | 233.45 | 4,717.47 | -1,528.11 | -2,061.27 | 1,458,471.455 | 3,167,060.237 | 40.590347 | -104.898472 |
| 6,000.00 | 60.69 | 233.45 | 4,766.42 | -1,580.04 | -2,131.32 | 1,458,419.522 | 3,166,990.185 | 40.590206 | -104.898725 |
| 6,100.00 | 60.69 | 233.45 | 4,815.37 | -1,631.97 | -2,201.37 | 1,458,367.590 | 3,166,920.134 | 40.590065 | -104.898979 |
| 6,200.00 | 60.69 | 233.45 | 4,864.31 | -1,683.90 | -2,271.42 | 1,458,315.658 | 3,166,850.082 | 40.589923 | -104.899232 |
| 6,300.00 | 60.69 | 233.45 | 4,913.26 | -1,735.84 | -2,341.47 | 1,458,263.725 | 3,166,780.030 | 40.589782 | -104.899486 |
| 6,400.00 | 60.69 | 233.45 | 4,962.21 | -1,787.77 | -2,411.53 | 1,458,211.793 | 3,166,709.979 | 40.589641 | -104.899739 |
| 6,500.00 | 60.69 | 233.45 | 5,011.15 | -1,839.70 | -2,481.58 | 1,458,159.861 | 3,166,639.927 | 40.589500 | -104.899993 |
| 6,600.00 | 60.69 | 233.45 | 5,060.10 | -1,891.63 | -2,551.63 | 1,458,107.928 | 3,166,569.875 | 40.589358 | -104.900246 |
| 6,700.00 | 60.69 | 233.45 | 5,109.05 | -1,943.56 | -2,621.68 | 1,458,055.996 | 3,166,499.824 | 40.589217 | -104.900500 |
| 6,800.00 | 60.69 | 233.45 | 5,158.00 | -1,995.50 | -2,691.73 | 1,458,004.064 | 3,166,429.772 | 40.589076 | -104.900753 |
| 6,900.00 | 60.69 | 233.45 | 5,206.94 | -2,047.43 | -2,761.78 | 1,457,952.132 | 3,166,359.720 | 40.588935 | -104.901007 |
| 7,000.00 | 60.69 | 233.45 | 5,255.89 | -2,099.36 | -2,831.84 | 1,457,900.199 | 3,166,289.669 | 40.588794 | -104.901260 |
| 7,100.00 | 60.69 | 233.45 | 5,304.84 | -2,151.29 | -2,901.89 | 1,457,848.267 | 3,166,219.617 | 40.588652 | -104.901514 |
| 7,200.00 | 60.69 | 233.45 | 5,353.78 | -2,203.23 | -2,971.94 | 1,457,796.335 | 3,166,149.565 | 40.588511 | -104.901767 |
| 7,300.00 | 60.69 | 233.45 | 5,402.73 | -2,255.16 | -3,041.99 | 1,457,744.402 | 3,166,079.514 | 40.588370 | -104.902021 |
| 7,400.00 | 60.69 | 233.45 | 5,451.68 | -2,307.09 | -3,112.04 | 1,457,692.470 | 3,166,009.462 | 40.588229 | -104.902274 |
| 7,500.00 | 60.69 | 233.45 | 5,500.62 | -2,359.02 | -3,182.09 | 1,457,640.538 | 3,165,939.410 | 40.588087 | -104.902528 |
| 7,600.00 | 60.69 | 233.45 | 5,549.57 | -2,410.96 | -3,252.15 | 1,457,588.605 | 3,165,869.359 | 40.587946 | -104.902781 |
| 7,700.00 | 60.69 | 233.45 | 5,598.52 | -2,462.89 | -3,322.20 | 1,457,536.673 | 3,165,799.307 | 40.587805 | -104.903034 |
| 7,800.00 | 60.69 | 233.45 | 5,647.47 | -2,514.82 | -3,392.25 | 1,457,484.741 | 3,165,729.256 | 40.587664 | -104.903288 |
| 7,900.00 | 60.69 | 233.45 | 5,696.41 | -2,566.75 | -3,462.30 | 1,457,432.809 | 3,165,659.204 | 40.587522 | -104.903541 |
| 8,000.00 | 60.69 | 233.45 | 5,745.36 | -2,618.68 | -3,532.35 | 1,457,380.876 | 3,165,589.152 | 40.587381 | -104.903795 |
| 8,100.00 | 60.69 | 233.45 | 5,794.31 | -2,670.62 | -3,602.40 | 1,457,328.944 | 3,165,519.101 | 40.587240 | -104.904048 |
| 8,200.00 | 60.69 | 233.45 | 5,843.25 | -2,722.55 | -3,672.46 | 1,457,277.012 | 3,165,449.049 | 40.587099 | -104.904302 |
| 8,300.00 | 60.69 | 233.45 | 5,892.20 | -2,774.48 | -3,742.51 | 1,457,225.079 | 3,165,378.997 | 40.586957 | -104.904555 |
| 8,400.00 | 60.69 | 233.45 | 5,941.15 | -2,826.41 | -3,812.56 | 1,457,173.147 | 3,165,308.946 | 40.586816 | -104.904809 |
| 8,500.00 | 60.69 | 233.45 | 5,990.09 | -2,878.35 | -3,882.61 | 1,457,121.215 | 3,165,238.894 | 40.586675 | -104.905062 |
| 8,600.00 | 60.69 | 233.45 | 6,039.04 | -2,930.28 | -3,952.66 | 1,457,069.282 | 3,165,168.842 | 40.586533 | -104.905316 |
| 8,700.00 | 60.69 | 233.45 | 6,087.99 | -2,982.21 | -4,022.71 | 1,457,017.350 | 3,165,098.791 | 40.586392 | -104.905569 |
| 8,800.00 | 60.69 | 233.45 | 6,136.93 | -3,034.14 | -4,092.77 | 1,456,965.418 | 3,165,028.739 | 40.586251 | -104.905823 |
| 8,900.00 | 60.69 | 233.45 | 6,185.88 | -3,086.08 | -4,162.82 | 1,456,913.486 | 3,164,958.687 | 40.586110 | -104.906076 |
| 9,000.00 | 60.69 | 233.45 | 6,234.83 | -3,138.01 | -4,232.87 | 1,456,861.553 | 3,164,888.636 | 40.585968 | -104.906330 |
| 9,100.00 | 60.69 | 233.45 | 6,283.78 | -3,189.94 | -4,302.92 | 1,456,809.621 | 3,164,818.584 | 40.585827 | -104.906583 |
| 9,200.00 | 60.69 | 233.45 | 6,332.72 | -3,241.87 | -4,372.97 | 1,456,757.689 | 3,164,748.533 | 40.585686 | -104.906836 |
| 9,293.69 | 60.69 | 233.45 | 6,378.58 | -3,290.53 | -4,438.60 | 1,456,709.033 | 3,164,682.900 | 40.585554 | -104.907074 |
| KOP 10°/100 | | | | | | | | | |
| 9,300.00 | 60.34 | 232.85 | 6,381.69 | -3,293.82 | -4,443.00 | 1,456,705.739 | 3,164,678.506 | 40.585545 | -104.907090 |
| 9,400.00 | 55.08 | 222.78 | 6,435.19 | -3,350.30 | -4,505.63 | 1,456,649.264 | 3,164,615.872 | 40.585391 | -104.907317 |
| 9,500.00 | 50.76 | 211.46 | 6,495.59 | -3,413.59 | -4,553.81 | 1,456,585.973 | 3,164,567.697 | 40.585218 | -104.907492 |
| 9,600.00 | 47.67 | 198.88 | 6,561.05 | -3,481.77 | -4,586.06 | 1,456,517.790 | 3,164,535.443 | 40.585031 | -104.907609 |
| 9,700.00 | 46.06 | 185.34 | 6,629.58 | -3,552.78 | -4,601.41 | 1,456,446.785 | 3,164,520.090 | 40.584837 | -104.907666 |
| 9,800.00 | 46.12 | 171.44 | 6,699.11 | -3,624.44 | -4,599.40 | 1,456,375.117 | 3,164,522.106 | 40.584640 | -104.907661 |
| 9,900.00 | 47.82 | 157.95 | 6,767.52 | -3,694.60 | -4,580.08 | 1,456,304.963 | 3,164,541.429 | 40.584447 | -104.907593 |
| 10,000.00 | 51.00 | 145.44 | 6,832.73 | -3,761.11 | -4,544.03 | 1,456,238.455 | 3,164,577.471 | 40.584264 | -104.907465 |

| | | | |
|------------------|----------------------------|-------------------------------------|---------------------------|
| Database: | EDM 5000.15 Single User Db | Local Co-ordinate Reference: | Well BLEHM-8X-HC-10-07-67 |
| Company: | Nickel Road Operating | TVD Reference: | KB @ 5115.00usft |
| Project: | Sec. 9-T7N-R67W | MD Reference: | KB @ 5115.00usft |
| Site: | BLEHM Pad | North Reference: | Grid |
| Well: | BLEHM-8X-HC-10-07-67 | Survey Calculation Method: | Minimum Curvature |
| Wellbore: | Wellbore #1 | | |
| Design: | Plan #2 | | |

| Planned Survey | | | | | | | | | | |
|-----------------------------|--------------------|----------------|-----------------------------|-----------------|-----------------|---------------------------|--------------------------|-----------|-------------|--|
| Measured Depth (usft) | Inclination (°) | Azimuth (°) | Vertical Depth (usft) | +N/-S (usft) | +E/-W (usft) | Map Northing (usft) | Map Easting (usft) | Latitude | Longitude | |
| 10,100.00 | 55.38 | 134.20 | 6,892.76 | -3,821.95 | -4,492.37 | 1,456,177.613 | 3,164,629.138 | 40.584096 | -104.907280 | |
| 10,200.00 | 60.68 | 124.20 | 6,945.78 | -3,875.28 | -4,426.65 | 1,456,124.286 | 3,164,694.859 | 40.583948 | -104.907045 | |
| 10,300.00 | 66.65 | 115.24 | 6,990.19 | -3,919.47 | -4,348.87 | 1,456,080.094 | 3,164,772.639 | 40.583826 | -104.906766 | |
| 10,400.00 | 73.09 | 107.08 | 7,024.64 | -3,953.18 | -4,261.39 | 1,456,046.381 | 3,164,860.113 | 40.583731 | -104.906452 | |
| 10,500.00 | 79.83 | 99.48 | 7,048.07 | -3,975.39 | -4,166.88 | 1,456,024.170 | 3,164,954.623 | 40.583669 | -104.906112 | |
| 10,525.01 | 81.54 | 97.63 | 7,052.12 | -3,979.06 | -4,142.48 | 1,456,020.500 | 3,164,979.027 | 40.583658 | -104.906024 | |
| LPL 8X-HC 768 FSL 460 FWL | | | | | | | | | | |
| 10,600.00 | 86.73 | 92.19 | 7,059.78 | -3,985.43 | -4,068.21 | 1,456,014.136 | 3,165,053.299 | 40.583639 | -104.905757 | |
| 10,633.24 | 89.05 | 89.80 | 7,061.00 | -3,986.00 | -4,035.00 | 1,456,013.561 | 3,165,086.504 | 40.583637 | -104.905638 | |
| LP 89.05 Inc, 89.80 Az | | | | | | | | | | |
| 10,700.00 | 89.05 | 89.80 | 7,062.11 | -3,985.77 | -3,968.25 | 1,456,013.796 | 3,165,153.257 | 40.583637 | -104.905397 | |
| 10,800.00 | 89.05 | 89.80 | 7,063.78 | -3,985.41 | -3,868.26 | 1,456,014.147 | 3,165,253.242 | 40.583636 | -104.905037 | |
| 10,900.00 | 89.05 | 89.80 | 7,065.44 | -3,985.06 | -3,768.28 | 1,456,014.499 | 3,165,353.228 | 40.583635 | -104.904677 | |
| 11,000.00 | 89.05 | 89.80 | 7,067.11 | -3,984.71 | -3,668.29 | 1,456,014.850 | 3,165,453.213 | 40.583634 | -104.904317 | |
| 11,100.00 | 89.05 | 89.80 | 7,068.77 | -3,984.36 | -3,568.31 | 1,456,015.202 | 3,165,553.199 | 40.583633 | -104.903957 | |
| 11,200.00 | 89.05 | 89.80 | 7,070.44 | -3,984.01 | -3,468.32 | 1,456,015.553 | 3,165,653.184 | 40.583632 | -104.903597 | |
| 11,300.00 | 89.05 | 89.80 | 7,072.10 | -3,983.66 | -3,368.33 | 1,456,015.904 | 3,165,753.170 | 40.583631 | -104.903237 | |
| 11,400.00 | 89.05 | 89.80 | 7,073.77 | -3,983.31 | -3,268.35 | 1,456,016.255 | 3,165,853.156 | 40.583630 | -104.902877 | |
| 11,500.00 | 89.05 | 89.80 | 7,075.44 | -3,982.96 | -3,168.36 | 1,456,016.606 | 3,165,953.141 | 40.583630 | -104.902517 | |
| 11,600.00 | 89.05 | 89.80 | 7,077.10 | -3,982.60 | -3,068.38 | 1,456,016.957 | 3,166,053.127 | 40.583629 | -104.902158 | |
| 11,700.00 | 89.05 | 89.80 | 7,078.77 | -3,982.25 | -2,968.39 | 1,456,017.308 | 3,166,153.112 | 40.583628 | -104.901798 | |
| 11,800.00 | 89.05 | 89.80 | 7,080.43 | -3,981.90 | -2,868.41 | 1,456,017.658 | 3,166,253.098 | 40.583627 | -104.901438 | |
| 11,900.00 | 89.05 | 89.80 | 7,082.10 | -3,981.55 | -2,768.42 | 1,456,018.009 | 3,166,353.083 | 40.583626 | -104.901078 | |
| 12,000.00 | 89.05 | 89.80 | 7,083.76 | -3,981.20 | -2,668.44 | 1,456,018.360 | 3,166,453.069 | 40.583625 | -104.900718 | |
| 12,100.00 | 89.05 | 89.80 | 7,085.43 | -3,980.85 | -2,568.45 | 1,456,018.710 | 3,166,553.054 | 40.583624 | -104.900358 | |
| 12,200.00 | 89.05 | 89.80 | 7,087.09 | -3,980.50 | -2,468.46 | 1,456,019.060 | 3,166,653.040 | 40.583623 | -104.899998 | |
| 12,300.00 | 89.05 | 89.80 | 7,088.76 | -3,980.15 | -2,368.48 | 1,456,019.411 | 3,166,753.025 | 40.583622 | -104.899638 | |
| 12,400.00 | 89.05 | 89.80 | 7,090.42 | -3,979.80 | -2,268.49 | 1,456,019.761 | 3,166,853.011 | 40.583622 | -104.899278 | |
| 12,500.00 | 89.05 | 89.80 | 7,092.09 | -3,979.45 | -2,168.51 | 1,456,020.111 | 3,166,952.996 | 40.583621 | -104.898918 | |
| 12,600.00 | 89.05 | 89.80 | 7,093.75 | -3,979.10 | -2,068.52 | 1,456,020.461 | 3,167,052.982 | 40.583620 | -104.898558 | |
| 12,700.00 | 89.05 | 89.80 | 7,095.42 | -3,978.75 | -1,968.54 | 1,456,020.811 | 3,167,152.967 | 40.583619 | -104.898198 | |
| 12,800.00 | 89.05 | 89.80 | 7,097.08 | -3,978.40 | -1,868.55 | 1,456,021.160 | 3,167,252.953 | 40.583618 | -104.897838 | |
| 12,900.00 | 89.05 | 89.80 | 7,098.74 | -3,978.05 | -1,768.57 | 1,456,021.510 | 3,167,352.938 | 40.583617 | -104.897478 | |
| 13,000.00 | 89.05 | 89.80 | 7,100.41 | -3,977.70 | -1,668.58 | 1,456,021.860 | 3,167,452.924 | 40.583616 | -104.897118 | |
| 13,100.00 | 89.05 | 89.80 | 7,102.07 | -3,977.35 | -1,568.59 | 1,456,022.209 | 3,167,552.909 | 40.583615 | -104.896758 | |
| 13,200.00 | 89.05 | 89.80 | 7,103.74 | -3,977.00 | -1,468.61 | 1,456,022.559 | 3,167,652.895 | 40.583614 | -104.896398 | |
| 13,300.00 | 89.05 | 89.80 | 7,105.40 | -3,976.65 | -1,368.62 | 1,456,022.908 | 3,167,752.880 | 40.583613 | -104.896038 | |
| 13,400.00 | 89.05 | 89.80 | 7,107.07 | -3,976.30 | -1,268.64 | 1,456,023.257 | 3,167,852.866 | 40.583613 | -104.895678 | |
| 13,500.00 | 89.05 | 89.80 | 7,108.73 | -3,975.95 | -1,168.65 | 1,456,023.607 | 3,167,952.851 | 40.583612 | -104.895318 | |
| 13,600.00 | 89.05 | 89.80 | 7,110.40 | -3,975.61 | -1,068.67 | 1,456,023.956 | 3,168,052.837 | 40.583611 | -104.894958 | |
| 13,700.00 | 89.05 | 89.80 | 7,112.06 | -3,975.26 | -968.68 | 1,456,024.305 | 3,168,152.823 | 40.583610 | -104.894598 | |
| 13,800.00 | 89.05 | 89.80 | 7,113.73 | -3,974.91 | -868.70 | 1,456,024.654 | 3,168,252.808 | 40.583609 | -104.894238 | |
| 13,900.00 | 89.05 | 89.80 | 7,115.39 | -3,974.56 | -768.71 | 1,456,025.002 | 3,168,352.794 | 40.583608 | -104.893878 | |
| 14,000.00 | 89.05 | 89.80 | 7,117.05 | -3,974.21 | -668.73 | 1,456,025.351 | 3,168,452.779 | 40.583607 | -104.893518 | |
| 14,100.00 | 89.05 | 89.80 | 7,118.72 | -3,973.86 | -568.74 | 1,456,025.700 | 3,168,552.765 | 40.583606 | -104.893158 | |
| 14,200.00 | 89.05 | 89.80 | 7,120.38 | -3,973.51 | -468.75 | 1,456,026.048 | 3,168,652.751 | 40.583605 | -104.892798 | |
| 14,300.00 | 89.05 | 89.80 | 7,122.05 | -3,973.16 | -368.77 | 1,456,026.397 | 3,168,752.737 | 40.583604 | -104.892438 | |
| 14,400.00 | 89.05 | 89.80 | 7,123.71 | -3,972.82 | -268.78 | 1,456,026.745 | 3,168,852.722 | 40.583603 | -104.892078 | |
| 14,500.00 | 89.05 | 89.80 | 7,125.37 | -3,972.47 | -168.80 | 1,456,027.093 | 3,168,952.708 | 40.583602 | -104.891718 | |
| 14,600.00 | 89.05 | 89.80 | 7,127.04 | -3,972.12 | -68.81 | 1,456,027.442 | 3,169,052.693 | 40.583601 | -104.891358 | |
| 14,700.00 | 89.05 | 89.80 | 7,128.70 | -3,971.77 | 31.17 | 1,456,027.790 | 3,169,152.679 | 40.583601 | -104.890998 | |
| 14,800.00 | 89.05 | 89.80 | 7,130.37 | -3,971.42 | 131.16 | 1,456,028.138 | 3,169,252.665 | 40.583600 | -104.890638 | |
| 14,900.00 | 89.05 | 89.80 | 7,132.03 | -3,971.08 | 231.14 | 1,456,028.486 | 3,169,352.650 | 40.583599 | -104.890278 | |
| 15,000.00 | 89.05 | 89.80 | 7,133.69 | -3,970.73 | 331.13 | 1,456,028.833 | 3,169,452.636 | 40.583598 | -104.889918 | |

| | | | |
|------------------|----------------------------|-------------------------------------|---------------------------|
| Database: | EDM 5000.15 Single User Db | Local Co-ordinate Reference: | Well BLEHM-8X-HC-10-07-67 |
| Company: | Nickel Road Operating | TVD Reference: | KB @ 5115.00usft |
| Project: | Sec. 9-T7N-R67W | MD Reference: | KB @ 5115.00usft |
| Site: | BLEHM Pad | North Reference: | Grid |
| Well: | BLEHM-8X-HC-10-07-67 | Survey Calculation Method: | Minimum Curvature |
| Wellbore: | Wellbore #1 | | |
| Design: | Plan #2 | | |

| Planned Survey | | | | | | | | | |
|--|-----------------|-------------|-----------------------|--------------|--------------|---------------------|--------------------|-----------|-------------|
| Measured Depth (usft) | Inclination (°) | Azimuth (°) | Vertical Depth (usft) | +N/-S (usft) | +E/-W (usft) | Map Northing (usft) | Map Easting (usft) | Latitude | Longitude |
| 15,100.00 | 89.05 | 89.80 | 7,135.36 | -3,970.38 | 431.12 | 1,456,029.181 | 3,169,552.621 | 40.583597 | -104.889558 |
| 15,200.00 | 89.05 | 89.80 | 7,137.02 | -3,970.03 | 531.10 | 1,456,029.529 | 3,169,652.607 | 40.583596 | -104.889198 |
| 15,300.00 | 89.05 | 89.80 | 7,138.69 | -3,969.68 | 631.09 | 1,456,029.876 | 3,169,752.592 | 40.583595 | -104.888838 |
| 15,400.00 | 89.05 | 89.80 | 7,140.35 | -3,969.34 | 731.07 | 1,456,030.224 | 3,169,852.578 | 40.583594 | -104.888478 |
| 15,500.00 | 89.05 | 89.80 | 7,142.01 | -3,968.99 | 831.06 | 1,456,030.571 | 3,169,952.563 | 40.583593 | -104.888118 |
| 15,600.00 | 89.05 | 89.80 | 7,143.68 | -3,968.64 | 931.04 | 1,456,030.919 | 3,170,052.549 | 40.583592 | -104.887758 |
| 15,700.00 | 89.05 | 89.80 | 7,145.34 | -3,968.30 | 1,031.03 | 1,456,031.266 | 3,170,152.534 | 40.583591 | -104.887398 |
| 15,800.00 | 89.05 | 89.80 | 7,147.00 | -3,967.95 | 1,131.01 | 1,456,031.613 | 3,170,252.520 | 40.583590 | -104.887038 |
| 15,900.00 | 89.05 | 89.80 | 7,148.67 | -3,967.60 | 1,231.00 | 1,456,031.960 | 3,170,352.506 | 40.583589 | -104.886679 |
| 16,000.00 | 89.05 | 89.80 | 7,150.33 | -3,967.25 | 1,330.99 | 1,456,032.307 | 3,170,452.491 | 40.583588 | -104.886319 |
| 16,100.00 | 89.05 | 89.80 | 7,151.99 | -3,966.91 | 1,430.97 | 1,456,032.654 | 3,170,552.477 | 40.583587 | -104.885959 |
| 16,200.00 | 89.05 | 89.80 | 7,153.66 | -3,966.56 | 1,530.96 | 1,456,033.000 | 3,170,652.462 | 40.583586 | -104.885599 |
| 16,300.00 | 89.05 | 89.80 | 7,155.32 | -3,966.21 | 1,630.94 | 1,456,033.347 | 3,170,752.448 | 40.583586 | -104.885239 |
| 16,400.00 | 89.05 | 89.80 | 7,156.98 | -3,965.87 | 1,730.93 | 1,456,033.694 | 3,170,852.433 | 40.583585 | -104.884879 |
| 16,500.00 | 89.05 | 89.80 | 7,158.65 | -3,965.52 | 1,830.91 | 1,456,034.040 | 3,170,952.419 | 40.583584 | -104.884519 |
| 16,600.00 | 89.05 | 89.80 | 7,160.31 | -3,965.17 | 1,930.90 | 1,456,034.387 | 3,171,052.404 | 40.583583 | -104.884159 |
| 16,700.00 | 89.05 | 89.80 | 7,161.97 | -3,964.83 | 2,030.89 | 1,456,034.733 | 3,171,152.390 | 40.583582 | -104.883799 |
| 16,800.00 | 89.05 | 89.80 | 7,163.64 | -3,964.48 | 2,130.87 | 1,456,035.079 | 3,171,252.376 | 40.583581 | -104.883439 |
| 16,900.00 | 89.05 | 89.80 | 7,165.30 | -3,964.14 | 2,230.86 | 1,456,035.425 | 3,171,352.361 | 40.583580 | -104.883079 |
| 17,000.00 | 89.05 | 89.80 | 7,166.96 | -3,963.79 | 2,330.84 | 1,456,035.771 | 3,171,452.347 | 40.583579 | -104.882719 |
| 17,100.00 | 89.05 | 89.80 | 7,168.63 | -3,963.44 | 2,430.83 | 1,456,036.117 | 3,171,552.332 | 40.583578 | -104.882359 |
| 17,200.00 | 89.05 | 89.80 | 7,170.29 | -3,963.10 | 2,530.81 | 1,456,036.463 | 3,171,652.318 | 40.583577 | -104.881999 |
| 17,300.00 | 89.05 | 89.80 | 7,171.95 | -3,962.75 | 2,630.80 | 1,456,036.809 | 3,171,752.303 | 40.583576 | -104.881639 |
| 17,400.00 | 89.05 | 89.80 | 7,173.61 | -3,962.41 | 2,730.78 | 1,456,037.155 | 3,171,852.289 | 40.583575 | -104.881279 |
| 17,500.00 | 89.05 | 89.80 | 7,175.28 | -3,962.06 | 2,830.77 | 1,456,037.500 | 3,171,952.275 | 40.583574 | -104.880919 |
| 17,600.00 | 89.05 | 89.80 | 7,176.94 | -3,961.72 | 2,930.76 | 1,456,037.846 | 3,172,052.260 | 40.583573 | -104.880559 |
| 17,700.00 | 89.05 | 89.80 | 7,178.60 | -3,961.37 | 3,030.74 | 1,456,038.191 | 3,172,152.246 | 40.583572 | -104.880199 |
| 17,800.00 | 89.05 | 89.80 | 7,180.26 | -3,961.02 | 3,130.73 | 1,456,038.536 | 3,172,252.231 | 40.583571 | -104.879839 |
| 17,900.00 | 89.05 | 89.80 | 7,181.93 | -3,960.68 | 3,230.71 | 1,456,038.882 | 3,172,352.217 | 40.583570 | -104.879479 |
| 18,000.00 | 89.05 | 89.80 | 7,183.59 | -3,960.33 | 3,330.70 | 1,456,039.227 | 3,172,452.202 | 40.583569 | -104.879119 |
| 18,100.00 | 89.05 | 89.80 | 7,185.25 | -3,959.99 | 3,430.68 | 1,456,039.572 | 3,172,552.188 | 40.583568 | -104.878759 |
| 18,200.00 | 89.05 | 89.80 | 7,186.92 | -3,959.64 | 3,530.67 | 1,456,039.917 | 3,172,652.174 | 40.583567 | -104.878399 |
| 18,300.00 | 89.05 | 89.80 | 7,188.58 | -3,959.30 | 3,630.65 | 1,456,040.262 | 3,172,752.159 | 40.583566 | -104.878039 |
| 18,400.00 | 89.05 | 89.80 | 7,190.24 | -3,958.95 | 3,730.64 | 1,456,040.606 | 3,172,852.145 | 40.583565 | -104.877679 |
| 18,500.00 | 89.05 | 89.80 | 7,191.90 | -3,958.61 | 3,830.63 | 1,456,040.951 | 3,172,952.130 | 40.583564 | -104.877319 |
| 18,600.00 | 89.05 | 89.80 | 7,193.56 | -3,958.27 | 3,930.61 | 1,456,041.296 | 3,173,052.116 | 40.583563 | -104.876959 |
| 18,700.00 | 89.05 | 89.80 | 7,195.23 | -3,957.92 | 4,030.60 | 1,456,041.640 | 3,173,152.102 | 40.583562 | -104.876599 |
| 18,800.00 | 89.05 | 89.80 | 7,196.89 | -3,957.58 | 4,130.58 | 1,456,041.985 | 3,173,252.087 | 40.583561 | -104.876239 |
| 18,900.00 | 89.05 | 89.80 | 7,198.55 | -3,957.23 | 4,230.57 | 1,456,042.329 | 3,173,352.073 | 40.583560 | -104.875879 |
| 19,000.00 | 89.05 | 89.80 | 7,200.21 | -3,956.89 | 4,330.55 | 1,456,042.673 | 3,173,452.058 | 40.583559 | -104.875519 |
| 19,100.00 | 89.05 | 89.80 | 7,201.88 | -3,956.54 | 4,430.54 | 1,456,043.017 | 3,173,552.044 | 40.583558 | -104.875159 |
| 19,200.00 | 89.05 | 89.80 | 7,203.54 | -3,956.20 | 4,530.52 | 1,456,043.362 | 3,173,652.029 | 40.583557 | -104.874799 |
| 19,300.00 | 89.05 | 89.80 | 7,205.20 | -3,955.86 | 4,630.51 | 1,456,043.706 | 3,173,752.015 | 40.583556 | -104.874439 |
| 19,400.00 | 89.05 | 89.80 | 7,206.86 | -3,955.51 | 4,730.50 | 1,456,044.049 | 3,173,852.001 | 40.583555 | -104.874079 |
| 19,500.00 | 89.05 | 89.80 | 7,208.52 | -3,955.17 | 4,830.48 | 1,456,044.393 | 3,173,951.986 | 40.583554 | -104.873719 |
| 19,600.00 | 89.05 | 89.80 | 7,210.19 | -3,954.82 | 4,930.47 | 1,456,044.737 | 3,174,051.972 | 40.583553 | -104.873359 |
| 19,700.00 | 89.05 | 89.80 | 7,211.85 | -3,954.48 | 5,030.45 | 1,456,045.081 | 3,174,151.957 | 40.583552 | -104.872999 |
| 19,800.00 | 89.05 | 89.80 | 7,213.51 | -3,954.14 | 5,130.44 | 1,456,045.424 | 3,174,251.943 | 40.583551 | -104.872639 |
| 19,900.00 | 89.05 | 89.80 | 7,215.17 | -3,953.79 | 5,230.42 | 1,456,045.767 | 3,174,351.929 | 40.583550 | -104.872279 |
| 20,000.00 | 89.05 | 89.80 | 7,216.83 | -3,953.45 | 5,330.41 | 1,456,046.111 | 3,174,451.914 | 40.583549 | -104.871920 |
| 20,100.00 | 89.05 | 89.80 | 7,218.50 | -3,953.11 | 5,430.40 | 1,456,046.454 | 3,174,551.900 | 40.583548 | -104.871560 |
| 20,130.35 | 89.05 | 89.80 | 7,219.00 | -3,953.00 | 5,460.74 | 1,456,046.558 | 3,174,582.250 | 40.583548 | -104.871450 |
| TD at 20130.35 - BHL 8X-HC 768 FSL 460 FEL | | | | | | | | | |

| | | | |
|------------------|----------------------------|-------------------------------------|---------------------------|
| Database: | EDM 5000.15 Single User Db | Local Co-ordinate Reference: | Well BLEHM-8X-HC-10-07-67 |
| Company: | Nickel Road Operating | TVD Reference: | KB @ 5115.00usft |
| Project: | Sec. 9-T7N-R67W | MD Reference: | KB @ 5115.00usft |
| Site: | BLEHM Pad | North Reference: | Grid |
| Well: | BLEHM-8X-HC-10-07-67 | Survey Calculation Method: | Minimum Curvature |
| Wellbore: | Wellbore #1 | | |
| Design: | Plan #2 | | |

| Design Targets | | | | | | | | | |
|---|-----------|----------|----------|-----------|-----------|---------------|---------------|-----------|-------------|
| Target Name | Dip Angle | Dip Dir. | TVD | +N/-S | +E/-W | Northing | Easting | Latitude | Longitude |
| - hit/miss target | (°) | (°) | (usft) | (usft) | (usft) | (usft) | (usft) | | |
| - Shape | | | | | | | | | |
| SHL 8X-HC 530 FNL 66 | 0.00 | 0.00 | 0.00 | 0.00 | 0.00 | 1,459,999.561 | 3,169,121.505 | 40.594503 | -104.891012 |
| - plan hits target center | | | | | | | | | |
| - Point | | | | | | | | | |
| LPL 8X-HC 768 FSL 460 | 0.00 | 0.00 | 7,059.00 | -3,986.79 | -4,144.06 | 1,456,012.773 | 3,164,977.448 | 40.583637 | -104.906030 |
| - plan misses target center by 10.47usft at 10525.01usft MD (7052.12 TVD, -3979.06 N, -4142.48 E) | | | | | | | | | |
| - Point | | | | | | | | | |
| BHL 8X-HC 768 FSL 460 | 0.00 | 0.00 | 7,219.00 | -3,953.00 | 5,460.74 | 1,456,046.558 | 3,174,582.250 | 40.583548 | -104.871450 |
| - plan hits target center | | | | | | | | | |
| - Point | | | | | | | | | |

| Plan Annotations | | | | |
|------------------|----------------|-------------------|--------------|---------------------------|
| Measured Depth | Vertical Depth | Local Coordinates | | Comment |
| (usft) | (usft) | +N/-S (usft) | +E/-W (usft) | |
| 1,500.00 | 1,500.00 | 0.00 | 0.00 | Surf Csg |
| 1,600.00 | 1,600.00 | 0.00 | 0.00 | Start Build 2.00 |
| 4,634.71 | 4,098.15 | -871.01 | -1,174.91 | Hold 60.69 Inc, 233.45 Az |
| 9,293.69 | 6,378.58 | -3,290.53 | -4,438.60 | KOP 10°/100 |
| 10,633.24 | 7,061.00 | -3,986.00 | -4,035.00 | LP 89.05 Inc, 89.80 Az |
| 20,130.35 | 7,219.00 | -3,953.00 | 5,460.74 | TD at 20130.35 |