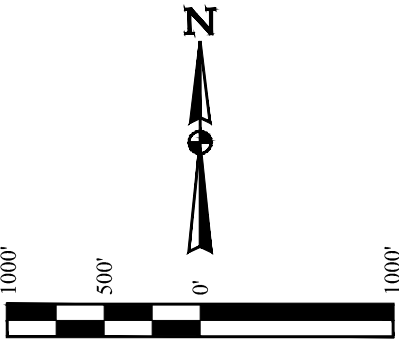
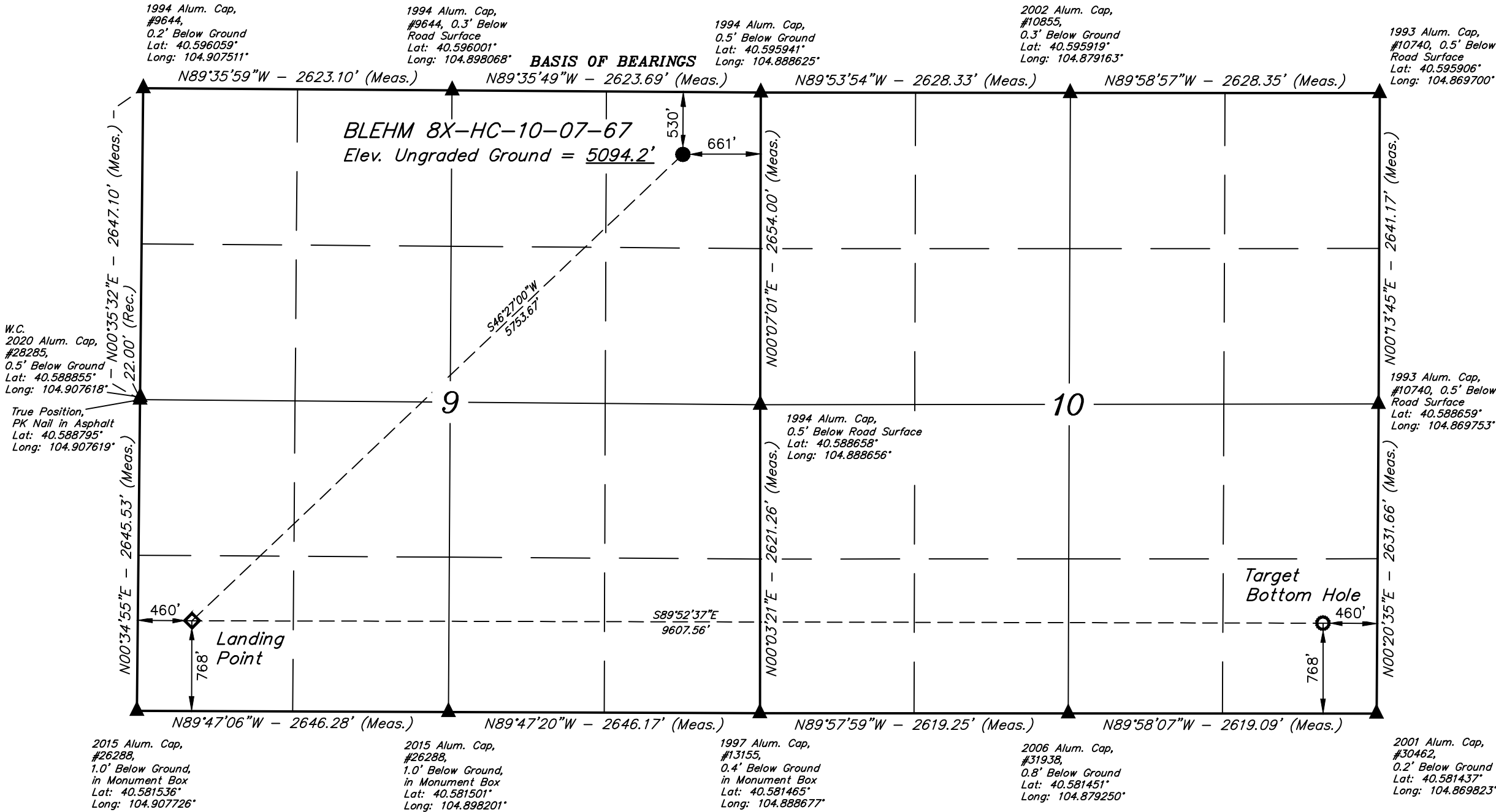


T7N, R67W, 6th P.M.

NICKEL ROAD OPERATING

BLEHM 8X-HC-10-07-67
NE 1/4 NE 1/4, SECTION 9, T7N, R67W, 6th P.M.
WELD COUNTY, COLORADO

BASIS OF ELEVATION
OPUS SOLUTION GENERATED NAVD 88



CERTIFICATE
THIS IS TO CERTIFY THAT THE ABOVE PLAT WAS PREPARED FROM FIELD NOTES OF ACTUAL SURVEYS MADE BY ME OR UNDER MY SUPERVISION AND THAT THE SAME ARE TRUE AND CORRECT TO THE BEST OF MY KNOWLEDGE AND BELIEF.

REGISTERED LAND SURVEYOR
REGISTRATION NO. 28285
STATE OF COLORADO
08-03-20

NOTE:
Distances referenced on plat to section lines are perpendicular.

LEGEND:

- = PROPOSED WELLHEAD.
- = TARGET BOTTOM HOLE.
- ◇ = LANDING POINT.
- ▲ = SECTION CORNERS LOCATED. (NAD 83)

NAD 83 (SURFACE LOCATION)	NAD 83 (LANDING POINT)	NAD 83 (TARGET BOTTOM HOLE)
LATITUDE = 40°35'40.21" (40.594503°)	LATITUDE = 40°35'01.09" (40.583637°)	LATITUDE = 40°35'00.77" (40.583547°)
LONGITUDE = 104°53'27.64" (104.891012°)	LONGITUDE = 104°54'21.74" (104.906039°)	LONGITUDE = 104°52'17.25" (104.871458°)
NAD 27 (SURFACE LOCATION)	NAD 27 (LANDING POINT)	NAD 27 (TARGET BOTTOM HOLE)
LATITUDE = 40°35'40.28" (40.594521°)	LATITUDE = 40°35'01.16" (40.583655°)	LATITUDE = 40°35'00.84" (40.583566°)
LONGITUDE = 104°53'25.74" (104.890484°)	LONGITUDE = 104°54'19.84" (104.905511°)	LONGITUDE = 104°52'15.35" (104.870931°)
STATE PLANE NAD 83 (CO. NORTH)	STATE PLANE NAD 83 (CO. NORTH)	STATE PLANE NAD 83 (CO. NORTH)
N: 1459999.41' E: 3169121.53'	N: 1456012.80' E: 3164974.89'	N: 1456046.23' E: 3174579.92'
STATE PLANE NAD 27 (CO. NORTH)	STATE PLANE NAD 27 (CO. NORTH)	STATE PLANE NAD 27 (CO. NORTH)
N: 459998.98' E: 2169272.50'	N: 456012.37' E: 2165125.91'	N: 456045.96' E: 2174730.89'



UELS, LLC
Corporate Office * 85 South 200 East
Vernal, UT 84078 * (435) 789-1017

SURVEYED BY	NATE WELCH, A.S.	06-23-20	SCALE
DRAWN BY	Z.L.	07-23-20	1" = 1000'

WELL LOCATION PLAT