

Diamond Operating INC, Pachner 42-31  
121-09928

Inspection #688309005

11/12/2020

Routine Inspection



**COLORADO**

**Oil & Gas Conservation  
Commission**

Department of Natural Resources

DIAMOND OPERATING, INC.  
PACHNER 42-31 WELL  
SE NE SEC. 31 T2S R53W  
FOR INFORMATION: 303-494-4420  
IN CASE OF EMERGENCY: DIAL 911





Colorado Oil and Gas Conservation Commission  
39.83602, -103.3522, 4865.5ft, 310°  
11/12/2020 11:38:27 AM



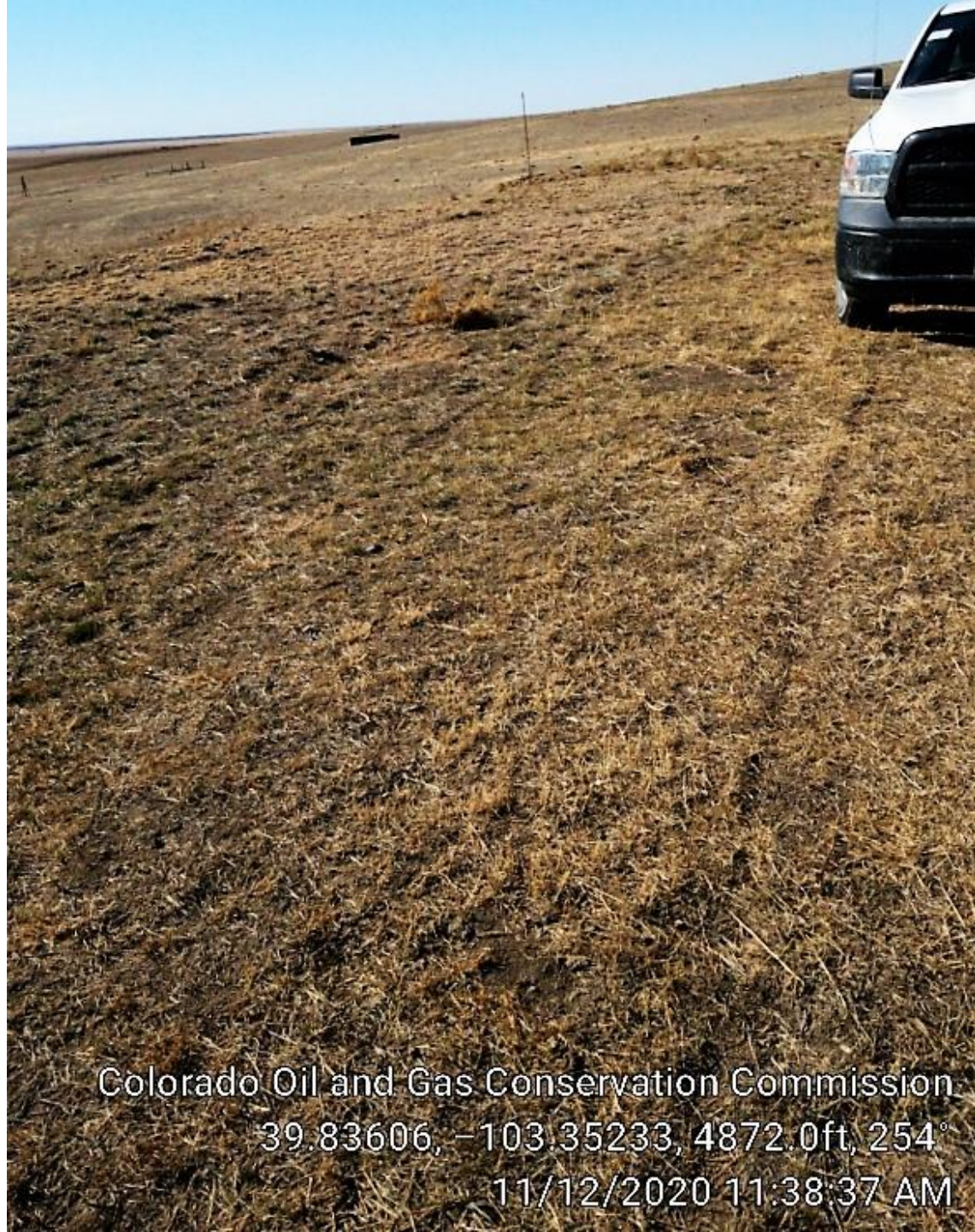
Colorado Oil and Gas Conservation Commission  
39.83609, -103.35231, 4858.9ft, 331°  
11/12/2020 11:38:07 AM





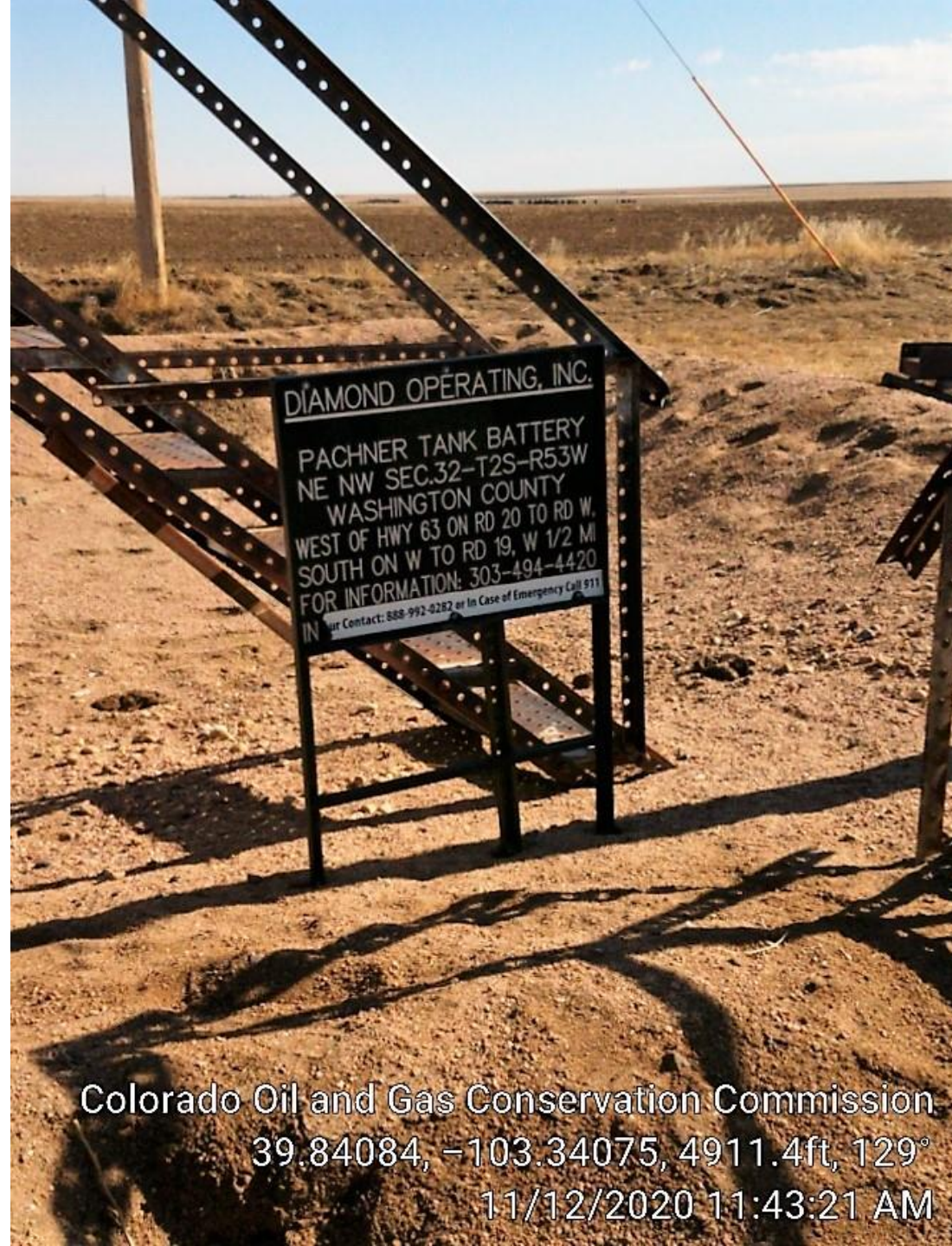
Colorado Oil and Gas Conservation Commission  
39.83609, -103.3523, 4855.6ft, 111°  
11/12/2020 11:38:04 AM





Colorado Oil and Gas Conservation Commission  
39.83606, -103.35233, 4872.0ft, 254°  
11/12/2020 11:38:37 AM





Colorado Oil and Gas Conservation Commission  
39.84084, -103.34075, 4911.4ft, 129°  
11/12/2020 11:43:21 AM





Colorado Oil and Gas Conservation Commission

39.8409, -103.34079, 4911.4ft, 88°

11/12/2020 11:43:34 AM





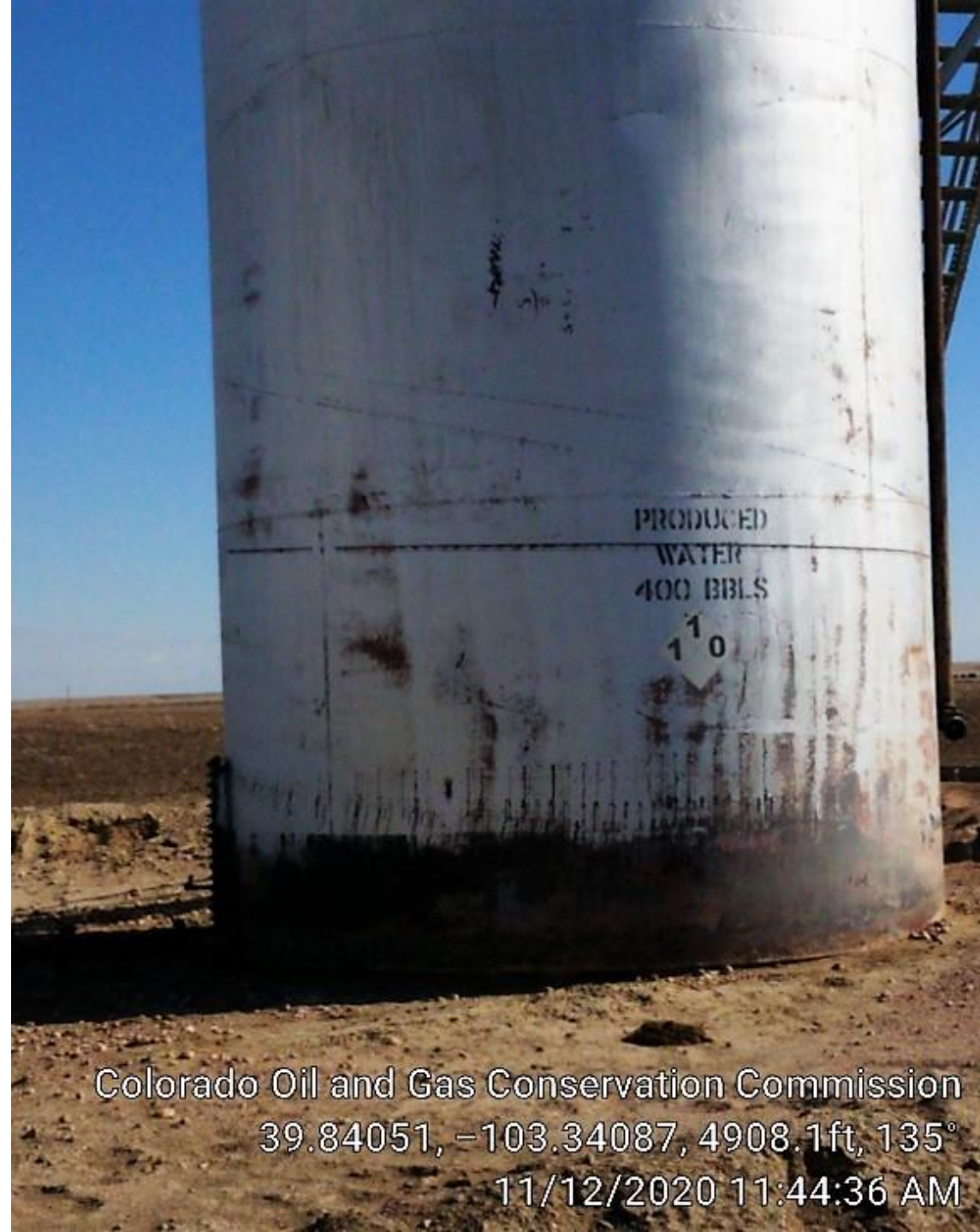
Colorado Oil and Gas Conservation Commission  
39.84085, -103.34067, 4908.1ft, 12°  
11/12/2020 11:44:02 AM





Colorado Oil and Gas Conservation Commission  
39.84083, -103.34076, 4918.0ft, 181°  
11/12/2020 11:43:47 AM





Colorado Oil and Gas Conservation Commission  
39.84051, -103.34087, 4908.1ft, 135°  
11/12/2020 11:44:36 AM

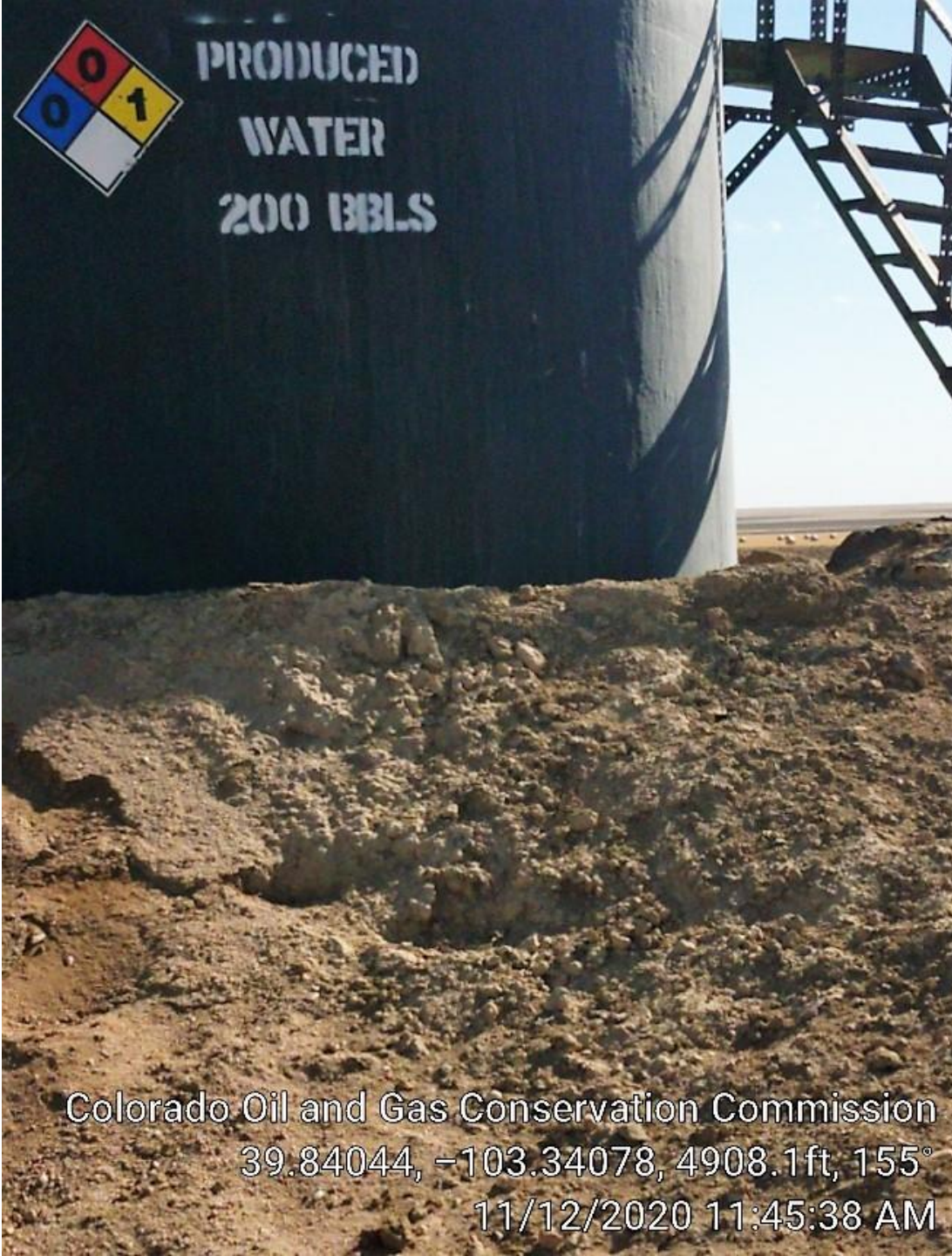




Maintain berms.

Colorado Oil and Gas Conservation Commission  
39.84084, -103.34073, 4914.7ft, 124°  
11/12/2020 11:43:52 AM





Colorado Oil and Gas Conservation Commission  
39.84044, -103.34078, 4908.1ft, 155°  
11/12/2020 11:45:38 AM

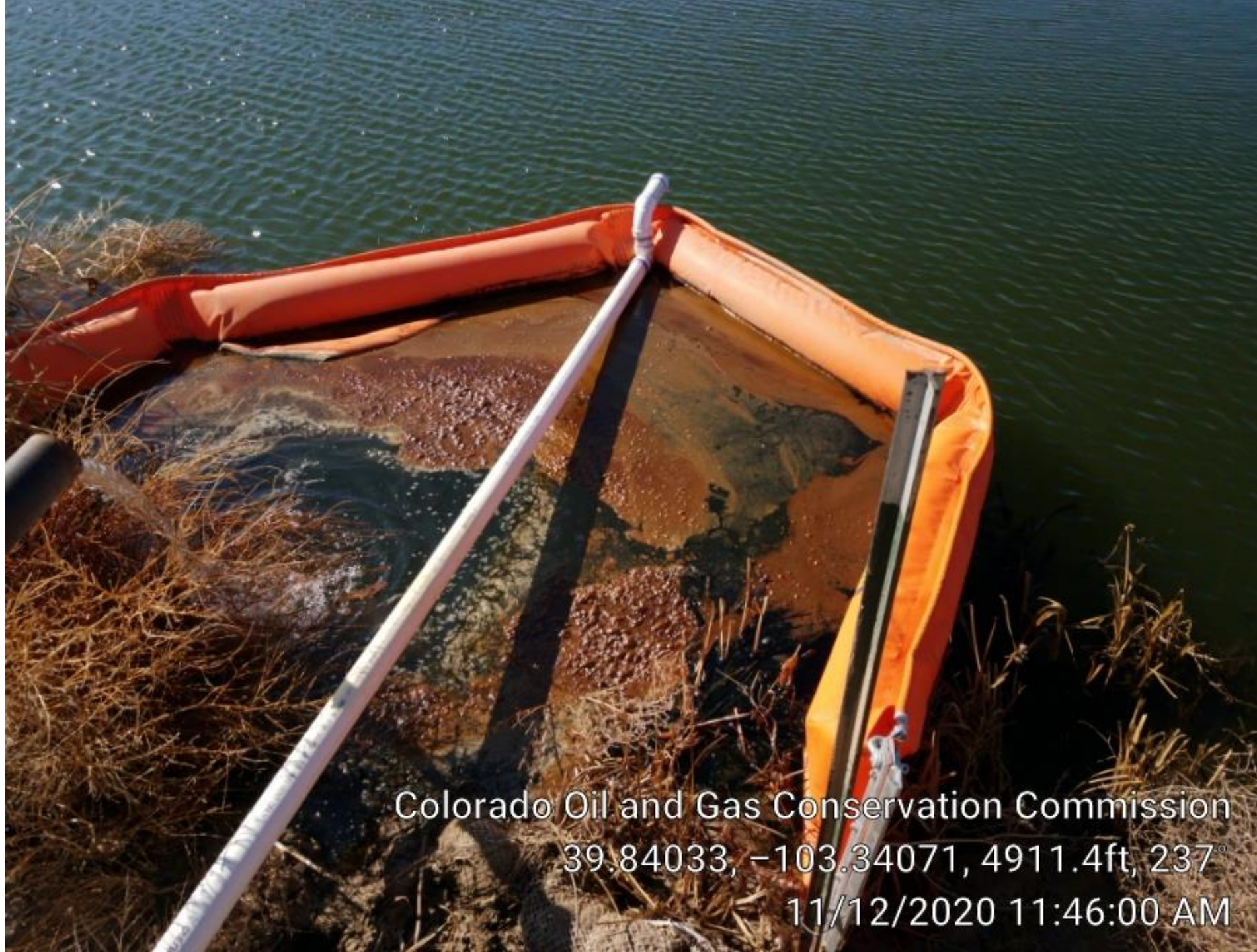




Worn fiberglass  
tank berms.

Colorado Oil and Gas Conservation Commission  
299°  
11/12/2020 11:49:12 AM





Colorado Oil and Gas Conservation Commission  
39.84033, -103.34071, 4911.4ft, 237°  
11/12/2020 11:46:00 AM





Colorado Oil and Gas Conservation Commission

39.84033, -103.34071, 4908.1ft, 249°

11/12/2020 11:46:04 AM





Colorado Oil and Gas Conservation Commission  
39.84016, -103.34075, 4904.9ft, 207°  
11/12/2020 11:46:28 AM