

PADCO LLC, Gulley 1-D  
121-08922  
Inspection #688308954  
11/11-13/2020  
PA Inspection



Colorado Oil and Gas Conservation Commission  
39.86459, -103.31203, 4868.8ft, 164°  
11/11/2020 08:50:53 AM



Colorado Oil and Gas Conservation Commission  
39.86477, -103.31204, 4862.2ft, 198°  
11/11/2020 08:50:29 AM





Colorado Oil and Gas Conservation Commission

58°

11/11/2020 08:49:35 AM



Old pit  
location.

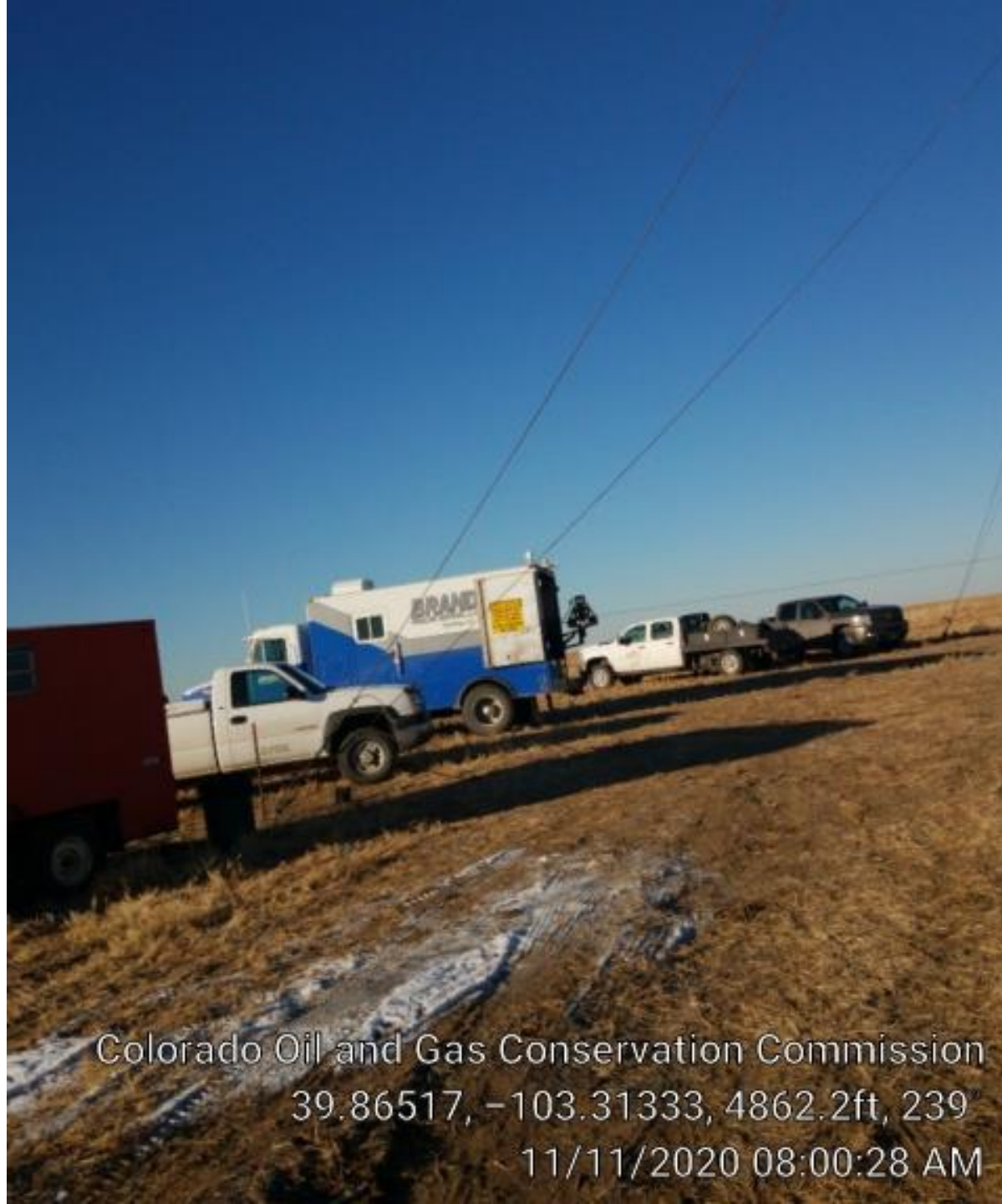
Colorado Oil and Gas Conservation Commission  
39.86496, -103.31192, 4855.6ft, 304°  
11/11/2020 12:13:34 PM





Old pit  
location.

Colorado Oil and Gas Conservation Commission  
39.86491, -103.31189, 4862.2ft, 322°  
11/11/2020 12:13:31 PM



Colorado Oil and Gas Conservation Commission  
39.86517, -103.31333, 4862.2ft, 239'  
11/11/2020 08:00:28 AM

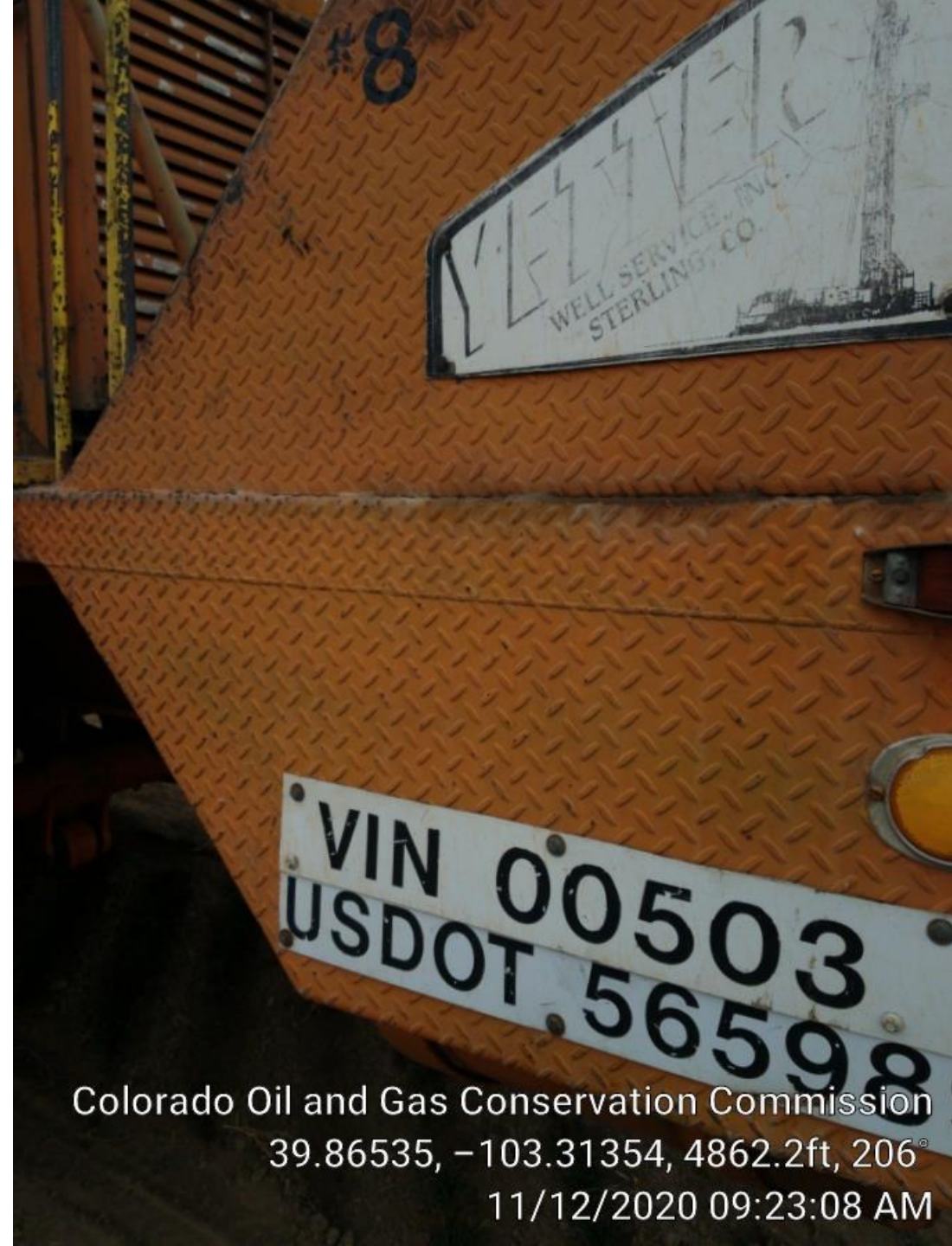


Colorado Oil and Gas Conservation Commission  
39.86523, -103.31321, 4855.6ft, 265°  
11/11/2020 08:00:26 AM





Colorado Oil and Gas Conservation Commission  
39.86522, -103.31357, 4865.5ft, 331°  
11/12/2020 08:26:27 AM



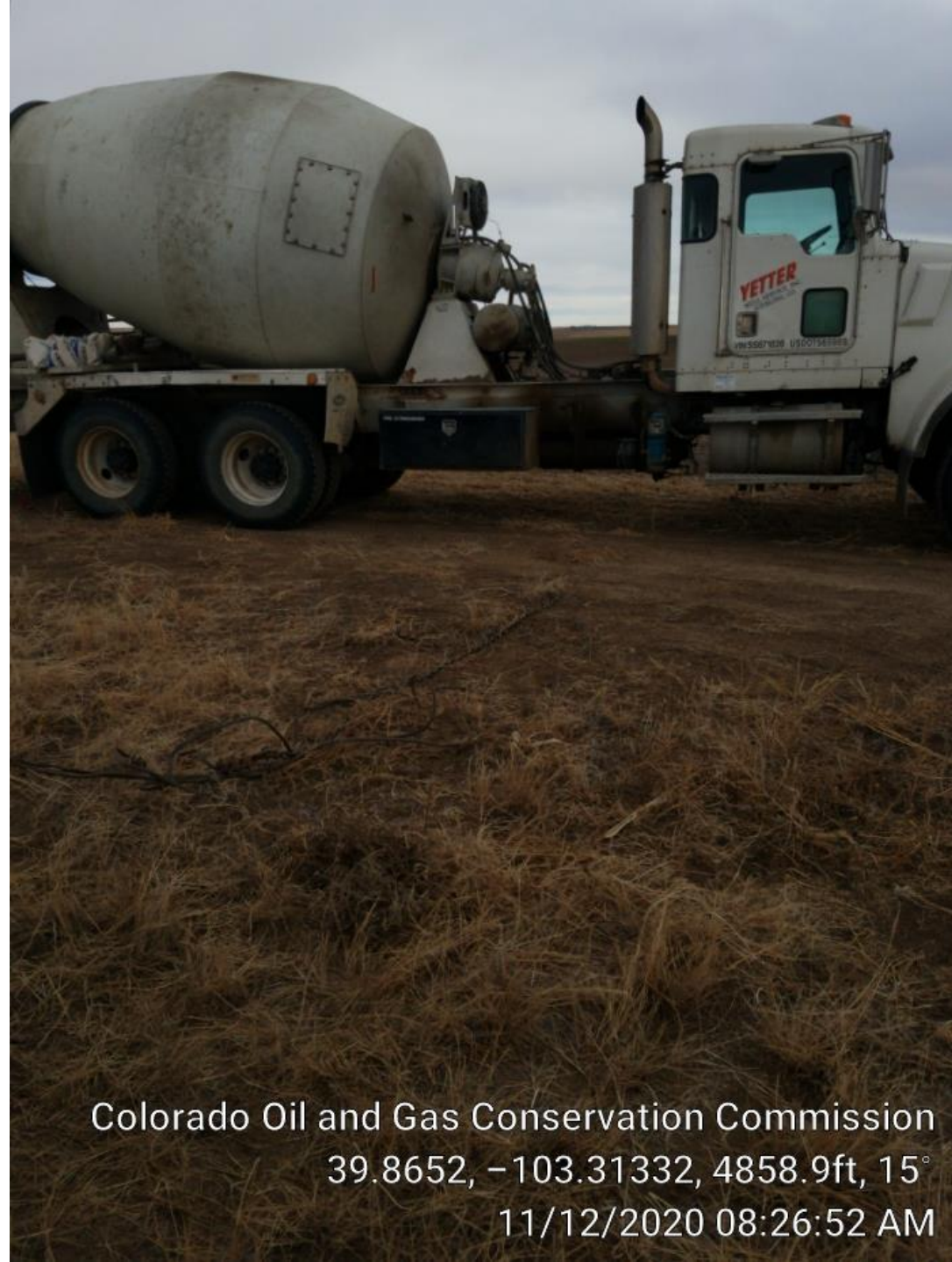
Colorado Oil and Gas Conservation Commission  
39.86535, -103.31354, 4862.2ft, 206°  
11/12/2020 09:23:08 AM





Colorado Oil and Gas Conservation Commission  
39.86524, -103.31329, 4862.2ft, 266°  
11/12/2020 08:27:01 AM





Colorado Oil and Gas Conservation Commission  
39.8652, -103.31332, 4858.9ft, 15°  
11/12/2020 08:26:52 AM



Colorado Oil and Gas Conservation Commission  
39.86513, -103.31327, 4888.5ft, 278°  
11/13/2020 12:18:32 PM





Colorado Oil and Gas Conservation Commission  
39.86529, -103.31352, 4796.6ft, 3°  
11/13/2020 01:53:48 PM





Colorado Oil and Gas Conservation Commission  
39.86519, -103.31347, 4849.1ft, 315°  
11/13/2020 01:53:56 PM