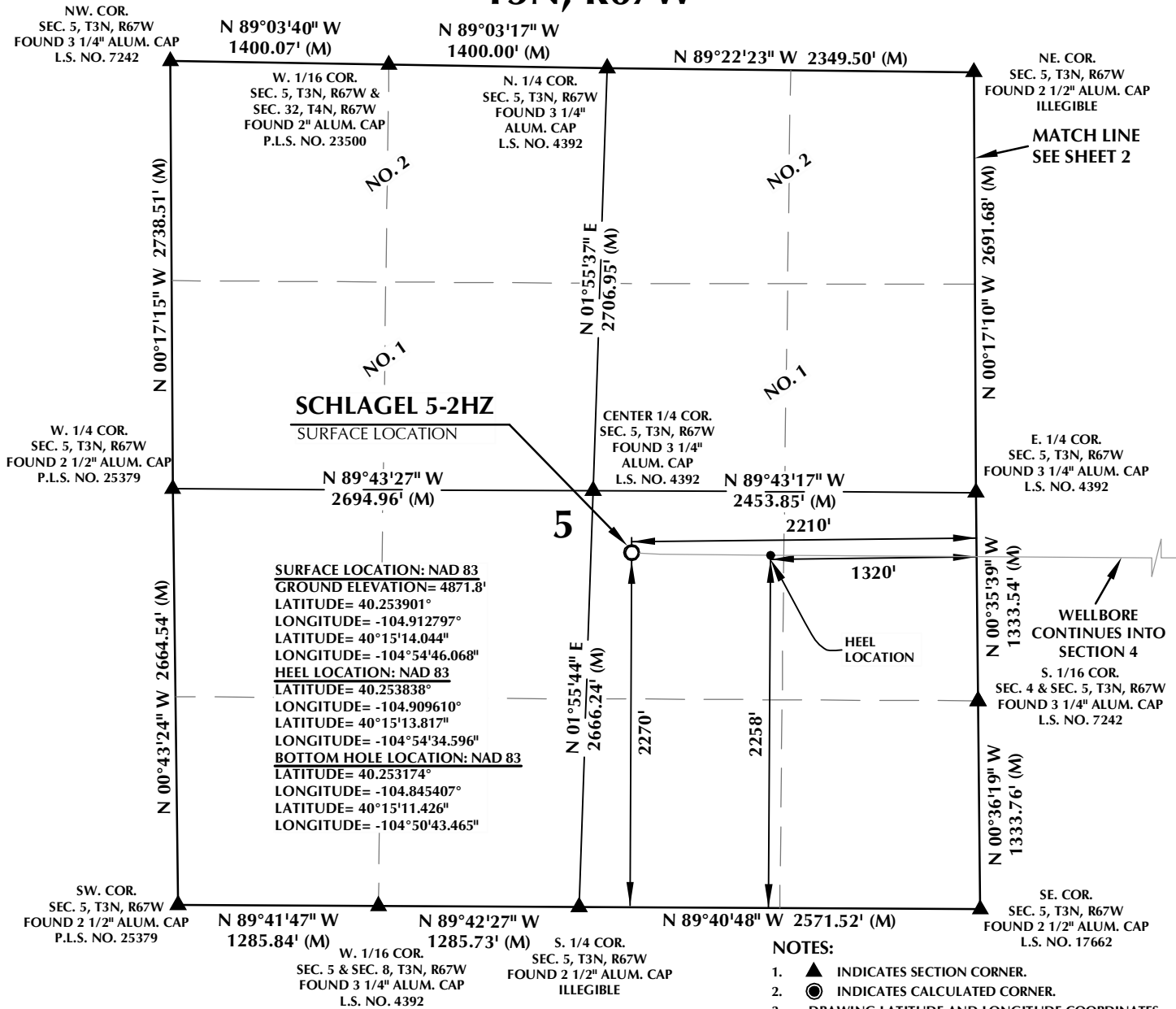


T3N, R67W



CERTIFICATE OF SURVEYOR:

THIS IS TO CERTIFY THAT THE ABOVE PLAT WAS PREPARED FROM FIELD NOTES OF ACTUAL SURVEYS MADE BY ME OR UNDER MY SUPERVISION AND THAT THE SAME ARE TRUE AND CORRECT TO THE BEST OF MY KNOWLEDGE AND BELIEF. THIS CERTIFICATE DOES NOT REPRESENT A LAND SURVEY PLAT OR IMPROVEMENT SURVEY PLAT AS DEFINED BY C.R.S. 8-31-102 AND CANNOT BE RELIED UPON TO DETERMINE OWNERSHIP.

Randall K. French
 RANDALL K. FRENCH
 PROFESSIONAL LAND SURVEYOR
 COLORADO REGISTRATION NUMBER 38512
 6/11/2020

NOTICE:
 ACCORDING TO COLORADO STATE LAW YOU MUST COMPLY WITH ALL ACTION BASED UPON ANY DEFECT IN THIS SURVEY WITHIN THREE YEARS AFTER YOU FIRST DISCOVER SUCH DEFECT. IN NO EVENT MAY ANY ACTION BASED UPON ANY DEFECT IN THIS SURVEY BE COMMENCED MORE THAN TEN YEARS FROM THE DATE ON THE CERTIFICATION SHOWN HEREON.

NOTE:
 MAGNETIC NORTH IS CURRENT AS OF 5/5/2020.
 MAGNETIC NORTH CHANGES WEST 0°06' PER YEAR.
 MAGNETIC MODEL: WMM-2020.



SCALE: 1" = 1000'

NOTES:

- ▲ INDICATES SECTION CORNER.
- INDICATES CALCULATED CORNER.
- DRAWING LATITUDE AND LONGITUDE COORDINATES ARE NAD 83 (2011)(EPOCH:2010).
- ELEVATION BASED ON NAVD88 (GEOID12B).
- BASIS OF BEARING DERIVED FROM COLORADO COORDINATE SYSTEM OF 1983 NORTH ZONE.
- ALL MEASURED DISTANCES ARE GRID.
- COMBINED SCALE FACTOR: .99972640 CALCULATED FROM THE CENTER 1/4 CORNER OF SECTION 5, T3N, R67W.
- OPERATOR: TRAVIS HOLLAND / PDOP = 1.6.
- SEE ADDENDUM TO WELL LOCATION CERTIFICATE FOR EXISTING IMPROVEMENTS WITHIN 500' OF THE WELL PAD.
- WELL FOOTAGES ARE MEASURED AT RIGHT ANGLES TO THE SECTION LINES.
- THE BOTTOM OF HOLE BEARS S89°37'44"E, 17921' FROM THE HEEL LOCATION.
- NO. 1 & NO. 2 AS SHOWN HEREON ARE GOVERNMENT LOTS 1 & 2 PER THE ORIGINAL GLO SURVEY.

WELL PAD - SCHLAGEL 10-5HZ

SCHLAGEL 5-2HZ
 WELL LOCATION CERTIFICATE
 2270' FSL & 2210' FEL (NWSE) (SURFACE)
 2258' FSL & 1320' FEL (NWSE) (HEEL)
 LOCATED IN SECTION 5
 2350' FSL & 968' FWL (NWSW) (BOTTOM)
 LOCATED IN SECTION 1
 T3N, R67W, 6TH P.M.
 WELD COUNTY, COLORADO

**Kerr-McGee Oil &
 Gas Onshore L.P.**
 1099 18th Street
 Denver, Colorado 80202



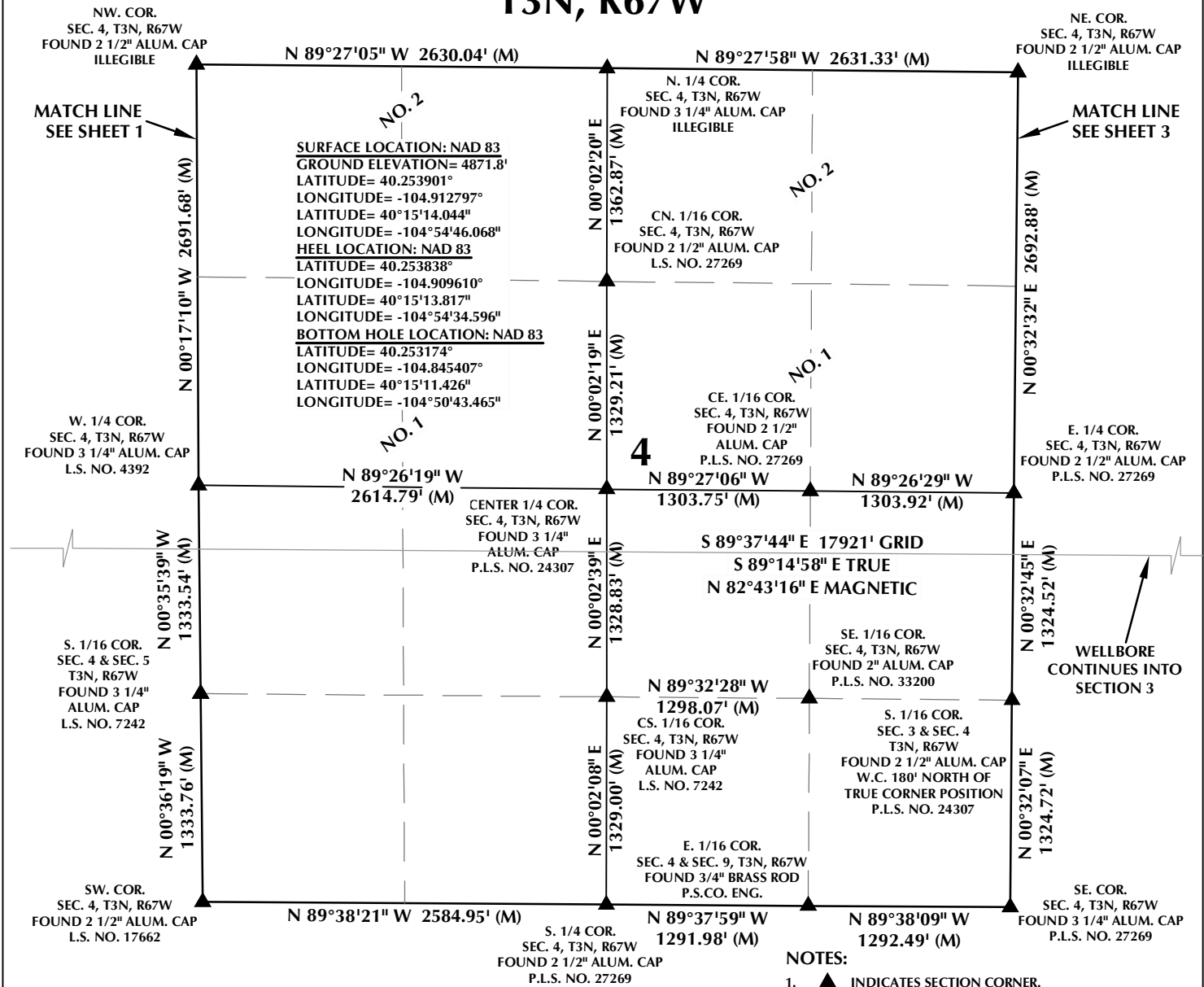
CONSULTING, LLC

SHERIDAN OFFICE
 1095 Saberton Avenue
 Sheridan, Wyoming 82801
 Phone 307-674-0609

LOVELAND OFFICE
 6706 North Franklin Avenue
 Loveland, Colorado 80538
 Phone 970-776-4331

DRAFTED BY:	LMO	CHECKED BY:	RKF	SHEET NO:
DATE DRAFTED:	6/11/2020	DATE SURVEYED:	5/5/2020	1
REVISED:		FILE NAME:	19-78	1 OF 5

T3N, R67W



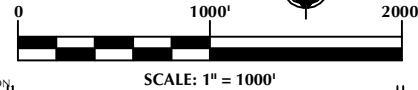
CERTIFICATE OF SURVEYOR:

THIS IS TO CERTIFY THAT THE ABOVE PLAT WAS PREPARED FROM FIELD NOTES OF ACTUAL SURVEYS MADE BY ME OR UNDER MY SUPERVISION AND TO THE BEST OF MY KNOWLEDGE AND BELIEF, THE SAME ARE TRUE AND CORRECT TO THE BEST OF MY KNOWLEDGE AND BELIEF. THIS CERTIFICATE DOES NOT REPRESENT A LAND SURVEY PLAT OR IMPROVEMENT SURVEY PLAT AS DEFINED BY C.R.S. 8-31-102 AND CANNOT BE RELIED UPON TO DETERMINE OWNERSHIP.

Randall K. French
RANDALL K. FRENCH
 PROFESSIONAL LAND SURVEYOR
 COLORADO REGISTRATION NUMBER 38512
 6/11/2020

NOTICE:
 ACCORDING TO COLORADO STATE LAW YOU MUST COMMENCE A LEGAL ACTION BASED UPON ANY DEFECT IN THIS SURVEY WITHIN THREE YEARS AFTER YOU FIRST DISCOVER SUCH DEFECT. IN NO EVENT MAY ANY ACTION BASED UPON ANY DEFECT IN THIS SURVEY BE COMMENCED MORE THAN TEN YEARS FROM THE DATE ON THE CERTIFICATION SHOWN HEREON.

NOTE:
 MAGNETIC NORTH IS CURRENT AS OF 5/5/2020.
 MAGNETIC NORTH CHANGES WEST 0°06' PER YEAR.
 MAGNETIC MODEL: WMM-2020.



NOTES:

- ▲ INDICATES SECTION CORNER.
- INDICATES CALCULATED CORNER.
- DRAWING LATITUDE AND LONGITUDE COORDINATES ARE NAD 83 (2011)(EPOCH:2010).
- ELEVATION BASED ON NAVD88 (GEOID12B).
- BASIS OF BEARING DERIVED FROM COLORADO COORDINATE SYSTEM OF 1983 NORTH ZONE.
- ALL MEASURED DISTANCES ARE GRID.
- COMBINED SCALE FACTOR: .99972640 CALCULATED FROM THE CENTER 1/4 CORNER OF SECTION 5, T3N, R67W.
- OPERATOR: TRAVIS HOLLAND / PDOP = 1.6.
- SEE ADDENDUM TO WELL LOCATION CERTIFICATE FOR EXISTING IMPROVEMENTS WITHIN 500' OF THE WELL PAD.
- WELL FOOTAGES ARE MEASURED AT RIGHT ANGLES TO THE SECTION LINES.
- THE BOTTOM OF HOLE BEARS S89°37'44"E, 17921' FROM THE HEEL LOCATION.
- NO. 1 & NO. 2 AS SHOWN HEREON ARE GOVERNMENT LOTS 1 & 2 PER THE ORIGINAL GLO SURVEY.

WELL PAD - SCHLAGEL 10-5HZ

SCHLAGEL 5-2HZ
WELL LOCATION CERTIFICATE
 2270' FSL & 2210' FEL (NWSE) (SURFACE)
 2258' FSL & 1320' FEL (NWSE) (HEEL)
 LOCATED IN SECTION 5
 2350' FSL & 968' FWL (NWSW) (BOTTOM)
 LOCATED IN SECTION 1
 T3N, R67W, 6TH P.M.
 WELD COUNTY, COLORADO

**Kerr-McGee Oil &
 Gas Onshore L.P.**
 1099 18th Street
 Denver, Colorado 80202



CONSULTING, LLC

SHERIDAN OFFICE
 1095 Saberton Avenue
 Sheridan, Wyoming 82801
 Phone 307-674-0609

LOVELAND OFFICE
 6706 North Franklin Avenue
 Loveland, Colorado 80538
 Phone 970-776-4331

DRAFTED BY: LMO	CHECKED BY: RKF	SHEET NO: 2
DATE DRAFTED: 6/11/2020	DATE SURVEYED: 5/5/2020	2 OF 5
REVISED:	FILE NAME: 19-78	

T3N, R67W

E. 1/16 COR.
SEC. 3, T3N, R67W & SEC. 34, T4N, R67W
FOUND 3 1/4" ALUM. CAP
P.L.S. NO. 33200

NW. COR.
SEC. 3, T3N, R67W
FOUND 2 1/2" ALUM. CAP
ILLEGIBLE

N 89°04'41" W
1301.57' (M)

N 89°05'00" W
1301.81' (M)

N 89°05'35" W
1301.50' (M)

N 89°05'21" W
1301.68' (M)

NE. COR.
SEC. 3, T3N, R67W
FOUND 2 1/2" ALUM. CAP
L.S. NO. 24670

MATCH LINE
SEE SHEET 2

MATCH LINE
SEE SHEET 4

SURFACE LOCATION: NAD 83
GROUND ELEVATION= 4871.8'
LATITUDE= 40.253901°
LONGITUDE= -104.912797°
LATITUDE= 40°15'14.044"
LONGITUDE= -104°54'46.068"
HEEL LOCATION: NAD 83
LATITUDE= 40.253838°
LONGITUDE= -104.909610°
LATITUDE= 40°15'13.817"
LONGITUDE= -104°54'34.596"
BOTTOM HOLE LOCATION: NAD 83
LATITUDE= 40.253174°
LONGITUDE= -104.845407°
LATITUDE= 40°15'11.426"
LONGITUDE= -104°50'43.465"

CENTER 1/4 COR.
SEC. 3, T3N, R67W
FOUND 2 1/2" ALUM. CAP
L.S. NO. 30113

3

W. 1/4 COR.
SEC. 3, T3N, R67W
FOUND 2 1/2" ALUM. CAP
P.L.S. NO. 27269

N 89°42'14" W
2606.70' (M)

N 89°11'04" W
2599.91' (M)

E. 1/4 COR.
SEC. 3, T3N, R67W
FOUND 2 1/2" ALUM. CAP
P.L.S. NO. 38512

S 89°37'44" E 17921' GRID
S 89°14'58" E TRUE
N 82°43'16" E MAGNETIC

WELLBORE
CONTINUES INTO
SECTION 2

S. 1/16 COR.
SEC. 3 & SEC. 4
T3N, R67W
FOUND 2 1/2" ALUM. CAP
W.C. 180' NORTH OF
TRUE CORNER POSITION
P.L.S. NO. 24307

N 00°32'45" E
1324.52' (M)
N 00°32'07" E
1324.72' (M)

N 00°28'12" E
2664.55' (M)
N 00°37'10" E
2656.61' (M)

N 00°32'23" E
2660.29' (M)
N 00°32'16" E
2640.55' (M)

SW. COR.
SEC. 3, T3N, R67W
FOUND 3 1/4" ALUM. CAP
P.L.S. NO. 27269

N 89°32'31" W 2603.06' (M)

S. 1/4 COR.
SEC. 3, T3N, R67W
FOUND RR SPIKE WITH
2 ALUM. CAP REF.
MONUMENTS
L.S. NO. 30113

N 89°32'18" W 2603.64' (M)

SE. COR.
SEC. 3, T3N, R67W
FOUND 3/4" BRASS ROD
P.S.CO. ENG.

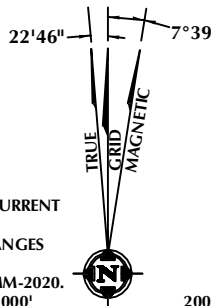
CERTIFICATE OF SURVEYOR:

THIS IS TO CERTIFY THAT THE ABOVE PLAT WAS PREPARED FROM FIELD NOTES OF ACTUAL SURVEYS MADE BY ME OR UNDER MY SUPERVISION AND TO THE BEST OF MY KNOWLEDGE AND BELIEF, THE SAME ARE TRUE AND CORRECT TO THE BEST OF MY KNOWLEDGE AND BELIEF. THIS CERTIFICATE DOES NOT REPRESENT A LAND SURVEY PLAT OR IMPROVEMENT SURVEY PLAT AS DEFINED BY C.R.S. 38-3-102 AND CANNOT BE RELIED UPON TO DETERMINE OWNERSHIP.

Randall K. French
PROFESSIONAL LAND SURVEYOR
COLORADO REGISTRATION NUMBER 38512
6/11/2020

NOTICE:
ACCORDING TO COLORADO STATE LAW YOU MUST COMMENCE LEGAL ACTION BASED UPON ANY DEFECT IN THIS SURVEY WITHIN THREE YEARS AFTER YOU FIRST DISCOVER SUCH DEFECT. IN NO EVENT MAY ANY ACTION BASED UPON ANY DEFECT IN THIS SURVEY BE COMMENCED MORE THAN TEN YEARS FROM THE DATE ON THE CERTIFICATION SHOWN HEREON.

NOTE:
MAGNETIC NORTH IS CURRENT
AS OF 5/5/2020.
MAGNETIC NORTH CHANGES
WEST 0°06' PER YEAR.
MAGNETIC MODEL: WMM-2020.



SCALE: 1" = 1000'

NOTES:

- ▲ INDICATES SECTION CORNER.
- INDICATES CALCULATED CORNER.
- DRAWING LATITUDE AND LONGITUDE COORDINATES ARE NAD 83 (2011)(EPOCH:2010).
- ELEVATION BASED ON NAVD88 (GEOID12B).
- BASIS OF BEARING DERIVED FROM COLORADO COORDINATE SYSTEM OF 1983 NORTH ZONE.
- ALL MEASURED DISTANCES ARE GRID.
- COMBINED SCALE FACTOR: .99972640 CALCULATED FROM THE CENTER 1/4 CORNER OF SECTION 5, T3N, R67W.
- OPERATOR: TRAVIS HOLLAND / PDOP = 1.6.
- SEE ADDENDUM TO WELL LOCATION CERTIFICATE FOR EXISTING IMPROVEMENTS WITHIN 500' OF THE WELL PAD.
- WELL FOOTAGES ARE MEASURED AT RIGHT ANGLES TO THE SECTION LINES.
- THE BOTTOM OF HOLE BEARS S89°37'44"E, 17921' FROM THE HEEL LOCATION.
- NO. 1 & NO. 2 AS SHOWN HEREON ARE GOVERNMENT LOTS 1 & 2 PER THE ORIGINAL GLO SURVEY.

WELL PAD - SCHLAGEL 10-5HZ

SCHLAGEL 5-2HZ
WELL LOCATION CERTIFICATE
2270' FSL & 2210' FEL (NWSE) (SURFACE)
2258' FSL & 1320' FEL (NWSE) (HEEL)
LOCATED IN SECTION 5
2350' FSL & 968' FWL (NWSW) (BOTTOM)
LOCATED IN SECTION 1
T3N, R67W, 6TH P.M.
WELD COUNTY, COLORADO

Kerr-McGee Oil &
Gas Onshore L.P.
1099 18th Street
Denver, Colorado 80202

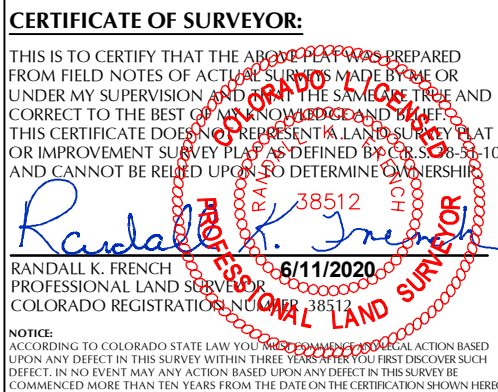


CONSULTING, LLC

SHERIDAN OFFICE
1095 Saberton Avenue
Sheridan, Wyoming 82801
Phone 307-674-0609

LOVELAND OFFICE
6706 North Franklin Avenue
Loveland, Colorado 80538
Phone 970-776-4331

DRAFTED BY:	LMO	CHECKED BY:	RKF	SHEET NO:
DATE DRAFTED:	6/11/2020	DATE SURVEYED:	5/5/2020	3
REVISED:		FILE NAME:	19-78	3 OF 5



WELL PAD - SCHLAGEL 10-5HZ

SCHLAGEL 5-2HZ

WELL LOCATION CERTIFICATE

2270' FSL & 2210' FEL (NWSE) (SURFACE)

2258' FSL & 1320' FEL (NWSE) (HEEL)

LOCATED IN SECTION 5

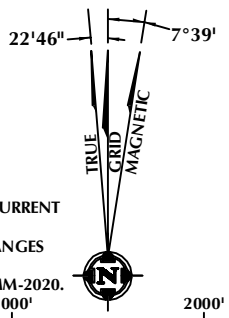
2350' FSL & 968' FWL (NWSW) (BOTTOM)

LOCATED IN SECTION 1

T3N, R67W, 6TH P.M.

WELD COUNTY, COLORADO

NOTE:
MAGNETIC NORTH IS CURRENT
AS OF 5/5/2020.
MAGNETIC NORTH CHANGES
WEST 0°06' PER YEAR.
MAGNETIC MODEL: WMM-2020.



NOTES:

1. ▲ INDICATES SECTION CORNER.
2. ● INDICATES CALCULATED CORNER.
3. DRAWING LATITUDE AND LONGITUDE COORDINATES ARE NAD 83 (2011)(EPOCH:2010).
4. ELEVATION BASED ON NAVD88 (GEOID12B).
5. BASIS OF BEARING DERIVED FROM COLORADO COORDINATE SYSTEM OF 1983 NORTH ZONE.
6. ALL MEASURED DISTANCES ARE GRID.
COMBINED SCALE FACTOR: .99972640 CALCULATED FROM THE CENTER 1/4 CORNER OF SECTION 5, T3N, R67W.
7. OPERATOR: TRAVIS HOLLAND / PDOP = 1.6.
8. SEE ADDENDUM TO WELL LOCATION CERTIFICATE FOR EXISTING IMPROVEMENTS WITHIN 500' OF THE WELL PAD.
9. WELL FOOTAGES ARE MEASURED AT RIGHT ANGLES TO THE SECTION LINES.
10. THE BOTTOM OF HOLE BEARS S89°37'44"E, 17921' FROM THE HEEL LOCATION.
11. NO. 1 & NO. 2 AS SHOWN HEREON ARE GOVERNMENT LOTS 1 & 2 PER THE ORIGINAL GLO SURVEY.

**Kerr-McGee Oil &
Gas Onshore L.P.**
1099 18th Street
Denver, Colorado 80202

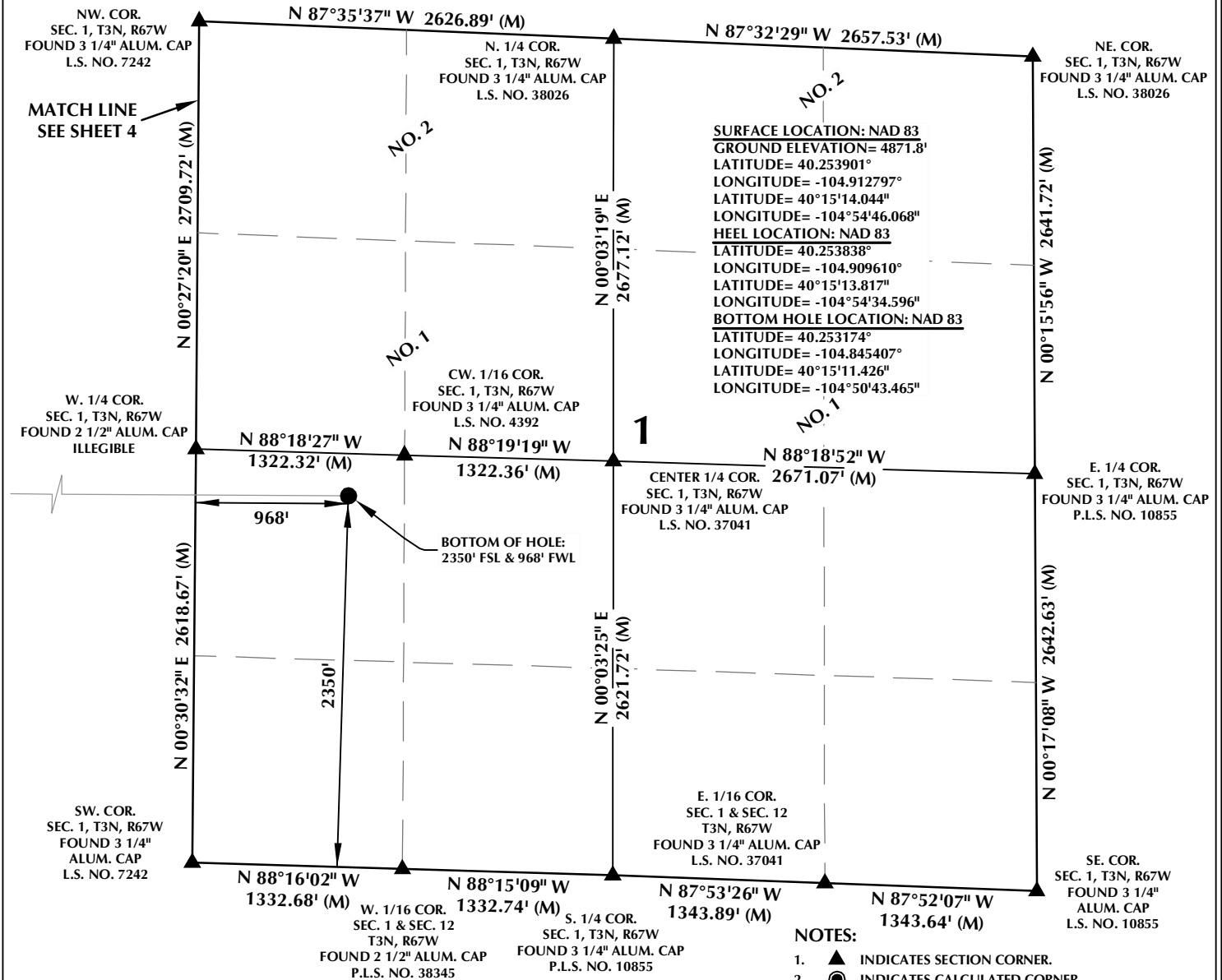


CONSULTING, LLC

IDAHO OFFICE	LOVELAND OFFICE
Saberton Avenue	6706 North Franklin Avenue
Idaho Falls, Wyoming 82801	Loveland, Colorado 80538
Phone 307-674-0609	Phone 970-776-4331

DRAFTED BY: LMO		CHECKED BY: RKF		SHEET NO: 4 4 OF 5
DATE DRAFTED: 6/11/2020		DATE SURVEYED: 5/5/2020		
REVISED:		FILE NAME: 19-78		

T3N, R67W



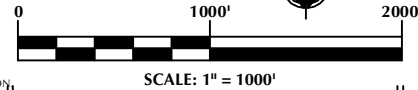
CERTIFICATE OF SURVEYOR:

THIS IS TO CERTIFY THAT THE ABOVE PLAT WAS PREPARED FROM FIELD NOTES OF ACTUAL SURVEYS MADE BY ME OR UNDER MY SUPERVISION AND THAT THE SAME ARE TRUE AND CORRECT TO THE BEST OF MY KNOWLEDGE AND BELIEF. THIS CERTIFICATE DOES NOT REPRESENT A LAND SURVEY PLAT OR IMPROVEMENT SURVEY PLAT AS DEFINED BY C.R.S. 8-31-102 AND CANNOT BE RELIED UPON TO DETERMINE OWNERSHIP.

Randall K. French
38512
PROFESSIONAL LAND SURVEYOR
6/11/2020
RANDALL K. FRENCH
PROFESSIONAL LAND SURVEYOR
COLORADO REGISTRATION NUMBER 38512

NOTICE:
ACCORDING TO COLORADO STATE LAW YOU MUST COMMENCE A LEGAL ACTION BASED UPON ANY DEFECT IN THIS SURVEY WITHIN THREE YEARS AFTER YOU FIRST DISCOVER SUCH DEFECT. IN NO EVENT MAY ANY ACTION BASED UPON ANY DEFECT IN THIS SURVEY BE COMMENCED MORE THAN TEN YEARS FROM THE DATE ON THE CERTIFICATION SHOWN HEREON.

NOTE:
MAGNETIC NORTH IS CURRENT AS OF 5/5/2020.
MAGNETIC NORTH CHANGES WEST 0°06' PER YEAR.
MAGNETIC MODEL: WMM-2020.



NOTES:

- INDICATES SECTION CORNER.
- INDICATES CALCULATED CORNER.
- DRAWING LATITUDE AND LONGITUDE COORDINATES ARE NAD 83 (2011)(EPOCH:2010).
- ELEVATION BASED ON NAVD88 (GEOID12B).
- BASIS OF BEARING DERIVED FROM COLORADO COORDINATE SYSTEM OF 1983 NORTH ZONE.
- ALL MEASURED DISTANCES ARE GRID.
- COMBINED SCALE FACTOR: .99972640 CALCULATED FROM THE CENTER 1/4 CORNER OF SECTION 5, T3N, R67W.
- OPERATOR: TRAVIS HOLLAND / PDOP = 1.6.
- SEE ADDENDUM TO WELL LOCATION CERTIFICATE FOR EXISTING IMPROVEMENTS WITHIN 500' OF THE WELL PAD.
- WELL FOOTAGES ARE MEASURED AT RIGHT ANGLES TO THE SECTION LINES.
- THE BOTTOM OF HOLE BEARS S89°37'44"E, 17921' FROM THE HEEL LOCATION.
- NO. 1 & NO. 2 AS SHOWN HEREON ARE GOVERNMENT LOTS 1 & 2 PER THE ORIGINAL GLO SURVEY.

WELL PAD - SCHLAGEL 10-5HZ

SCHLAGEL 5-2HZ
WELL LOCATION CERTIFICATE
2270' FSL & 2210' FEL (NWSE) (SURFACE)
2258' FSL & 1320' FEL (NWSE) (HEEL)
LOCATED IN SECTION 5
2350' FSL & 968' FWL (NWSW) (BOTTOM)
LOCATED IN SECTION 1
T3N, R67W, 6TH P.M.
WELD COUNTY, COLORADO

**Kerr-McGee Oil &
Gas Onshore L.P.**
1099 18th Street
Denver, Colorado 80202

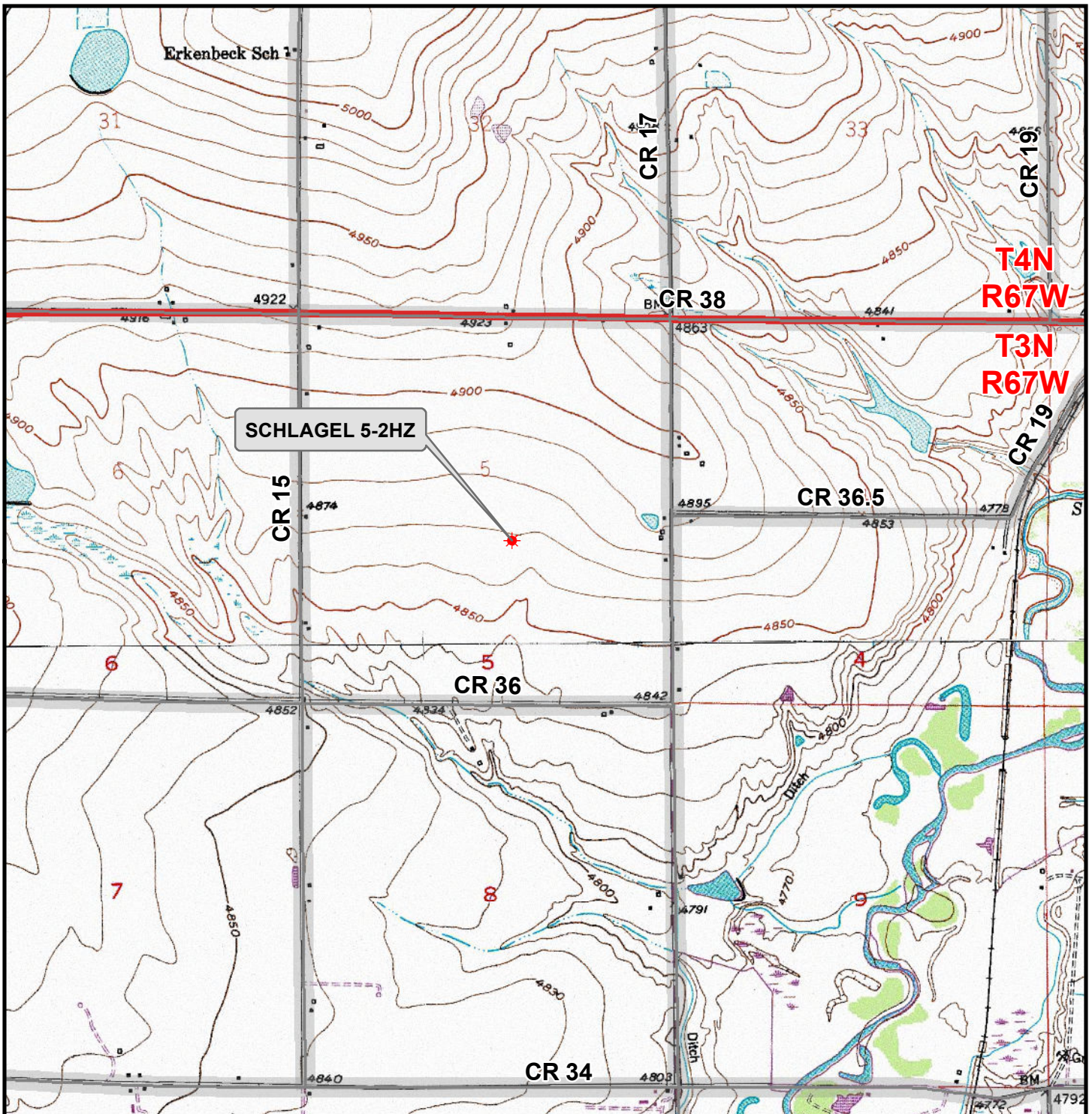


CONSULTING, LLC

SHERIDAN OFFICE
1095 Saberton Avenue
Sheridan, Wyoming 82801
Phone 307-674-0609

LOVELAND OFFICE
6706 North Franklin Avenue
Loveland, Colorado 80538
Phone 970-776-4331

DRAFTED BY:	LMO	CHECKED BY:	RKF	SHEET NO:
DATE DRAFTED:	6/11/2020	DATE SURVEYED:	5/5/2020	5
REVISED:		FILE NAME:	19-78	5 OF 5



Legend

- ★ Well - Proposed
- Road - Primitive - Existing
- Road - County - Existing
- Road - Improved - Existing
- Road - Highway - Existing

WELL PAD - SCHLAGEL 10-5HZ

GENERAL LOCATION MAP

SCHLAGEL 5-2HZ

LOCATED IN SECTION 5

T3N, R67W, 6th P.M.

WELD COUNTY, COLORADO

**Kerr-McGee Oil &
Gas Onshore L.P.**

**1099 18th Street
Denver, Colorado 80202**



CONSULTING, LLC

SHERIDAN OFFICE
1095 Saberton Avenue
Sheridan, Wyoming 82801
Phone 307-674-0609

LOVELAND OFFICE
6706 North Franklin Avenue
Loveland, Colorado 80538
Phone 970-776-4331



SCALE: 1" = 2,000ft

NAD83 CO-Nft

DRAWN: DP

DATE: 11 Jun 2020

REVISED:

DATE: