

CONFLUENCE RESOURCES

Location: COLORADO Slot: SLOT#08 BUFORD 33-2-4L (770'FSL & 919'FWL,SEC.34)

Field: WELD COUNTY (NAD83, TRUE NORTH) Well: BUFORD 33-2-4L

Facility: SEC.34-T01N-R65W Wellbore: BUFORD 33-2-4L PWB

Plot reference wellpath is BUFORD 33-2-4L (REV-A.0) PWP

Grid System: NAD83 / Lambert Colorado SP, Northern Zone (501), US feet

True vertical depths are referenced to RIG (20.5') (RKB)

Reference wellpath measured depths are referenced to RIG (20.5') (RKB)

RIG (20.5') (RKB) to Mean Sea Level: 5157.5 feet

Coordinates are in feet referenced to Slot

Mean Sea Level to Mud line (At Slot: SLOT#08 BUFORD 33-2-4L (770'FSL & 919'FWL,SEC.34)): 0 feet

Depths are in feet

Offset wellpath MDs are referenced to each path's default MD datum

Created by: adamkai on 2020-01-27; Database: Denver

Location Information

Facility Name			Grid East (US ft)	Grid North (US ft)	Latitude	Longitude
SEC.34-T01N-R65W			3236196.141	1244789.256	40°00'8.1000"N	104°39'24.8400"W
Slot	Local N (ft)	Local E (ft)	Grid East (US ft)	Grid North (US ft)	Latitude	Longitude
SLOT#08 BUFORD 33-2-4L (770'FSL & 919'FWL,SEC.34)	149.36	176.50	3236361.203	1244940.280	40°00'9.5760"N	104°39'22.5720"W
RIG (20.5') (RKB) to Mud line (At Slot: SLOT#08 BUFORD 33-2-4L (770'FSL & 919'FWL,SEC.34))					5157.5ft	
Mean Sea Level to Mud line (At Slot: SLOT#08 BUFORD 33-2-4L (770'FSL & 919'FWL,SEC.34))					0ft	
RIG (20.5') (RKB) to Mean Sea Level					5157.5ft	

Targets

Name	MD (ft)	TVD (ft)	Local N (ft)	Local E (ft)	Grid East (US ft)	Grid North (US ft)	Latitude	Longitude
SEC 28-T01N-R65W	N/A	1.00	0.00	-151.28	3236209.93	1244938.84	40°00'9.5760"N	104°39'24.5160"W
SEC 33-T01N-R65W	N/A	1.00	0.00	-151.28	3236209.93	1244938.84	40°00'9.5760"N	104°39'24.5160"W
SEC 34-T01N-R65W	N/A	1.00	0.00	-151.28	3236209.93	1244938.84	40°00'9.5760"N	104°39'24.5160"W
BUFORD 33-2-4L LP REV-1 (470'FSL & 536'FEL,SEC.33)	8051.72	7520.50	-302.32	-1454.01	3234910.19	1244624.16	40°00'5.6880"N	104°39'41.2560"W
BUFORD 33-2-4L BHL REV-1 (470'FNL & 536'FEL,SEC.28)	17719.92	7530.50	9365.87	-1470.25	3234801.96	1254291.41	40°01'42.1320"N	104°39'41.4720"W

Tie-On Position

MD (ft)	Inc (°)	Az (°)	TVD (ft)	Local N (ft)	Local E (ft)	Grid East (US ft)	Grid North (US ft)	Latitude	Longitude
20.50	0.000	236.641	20.50	0.00	0.00	3236361.20	1244940.28	40°00'9.5760"N	104°39'22.5720"W

Bottom Hole Location

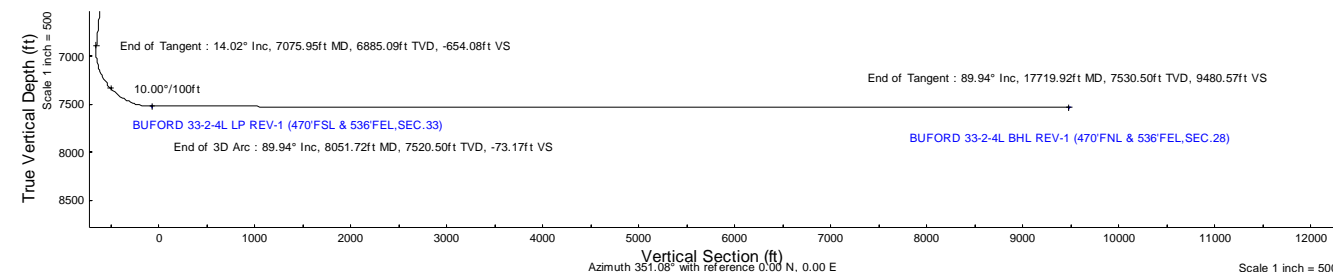
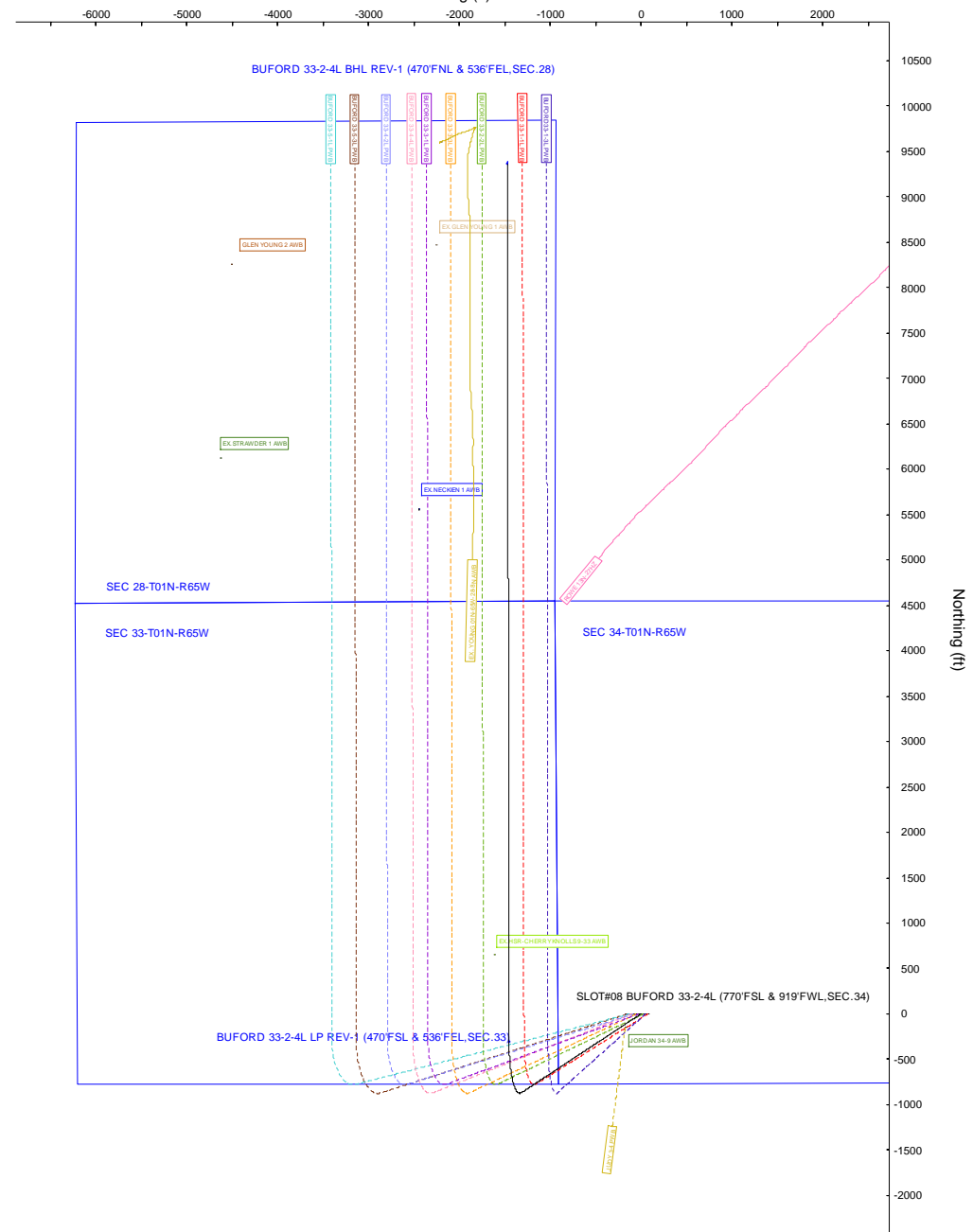
MD (ft)	Inc (°)	Az (°)	TVD (ft)	Local N (ft)	Local E (ft)	Grid East (US ft)	Grid North (US ft)	Latitude	Longitude
17719.92	89.941	359.904	7530.50	9365.87	-1470.25	3234801.96	1254291.41	40°01'42.1320"N	104°39'41.4720"W

Well Profile Data

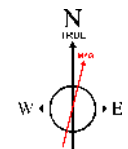
Design Comment	MD (ft)	Inc (°)	Az (°)	TVD (ft)	Local N (ft)	Local E (ft)	DLS (°/100ft)	VS (ft)
Tie On	20.50	0.000	236.641	20.50	0.00	0.00	0.00	0.00
End of Tangent	200.00	0.000	236.641	200.00	0.00	0.00	0.00	0.00
End of Build	900.89	14.018	236.641	893.91	-46.91	-71.26	2.00	-35.29
End of Tangent	7075.95	14.018	236.641	6885.09	-869.39	-1320.56	0.00	-654.08
End of 3D Arc	8051.72	89.941	359.904	7520.50	-302.32	-1454.01	10.00	-73.17
End of Tangent	17719.92	89.941	359.904	7530.50	9365.87	-1470.25	0.00	9480.57

Scale 1 inch = 500

Easting (ft)



Baker Hughes



BGGM (1900.0 to 2021.0) Dip: 66.28° Field: 51920.9 nT
Magnetic North is 7.87 degrees East of True North (at 1/15/2020)

To correct azimuth from Magnetic to True add 7.87 degrees

Planned Wellpath Report

BUFORD 33-2-4L (REV-A.0) PWP

Page 1 of 10

REFERENCE WELLPATH IDENTIFICATION			
Operator	CONFLUENCE RESOURCES	Well	BUFORD 33-2-4L
Field	WELD COUNTY (NAD83, TRUE NORTH)	API/Legal	
Facility	SEC.34-T01N-R65W	Wellbore	BUFORD 33-2-4L PWB
Slot	SLOT#08 BUFORD 33-2-4L (770'FSL & 919'FWL, SEC.34)		

REPORT SETUP INFORMATION			
Projection System	NAD83 / Lambert Colorado SP, Northern Zone (501), US feet	Software System	WellArchitect® 6.0
North Reference	True	User	Adamkat
Scale	0.999966	Report Generated	1/27/2020 at 1:00:59 PM
Convergence at slot	0.55° East	Database	Denver

WELLPATH LOCATION						
	Local coordinates		Grid coordinates		Geographic coordinates	
	North[ft]	East[ft]	Easting[US ft]	Northing[US ft]	Latitude	Longitude
Slot Location	149.36	176.50	3236361.20	1244940.28	40°00'9.5760"N	104°39'22.5720"W
Facility Reference Pt			3236186.14	1244789.26	40°00'8.1000"N	104°39'24.8400"W
Field Reference Pt			3230456.90	1245096.09	40°00'11.6640"N	104°40'38.4240"W

WELLPATH DATUM			
Calculation method	Minimum curvature	RIG (20.5') (RKB) to Facility Vertical Datum	5157.50ft
Horizontal Reference Pt	Slot	RIG (20.5') (RKB) to Mean Sea Level	5157.50ft
Vertical Reference Pt	RIG (20.5') (RKB)	RIG (20.5') (RKB) to Mud Line at Slot (SLOT#08 BUFORD 33-2-4L (770'FSL & 919'FWL, SEC.34))	5157.50ft
MD Reference Pt	RIG (20.5') (RKB)	Section Origin	N 0.00, E 0.00 ft
Field Vertical Reference	Mean Sea Level	Section Azimuth	351.08°

Planned Wellpath Report

BUFORD 33-2-4L (REV-A.0) PWP

Page 2 of 10

REFERENCE WELLPATH IDENTIFICATION			
Operator	CONFLUENCE RESOURCES	Well	BUFORD 33-2-4L
Field	WELD COUNTY (NAD83, TRUE NORTH)	API/Legal	
Facility	SEC.34-T01N-R65W	Wellbore	BUFORD 33-2-4L PWB
Slot	SLOT#08 BUFORD 33-2-4L (770'FSL & 919'FWL, SEC.34)		

WELLPATH DATA (183 stations) † = interpolated, ‡ = extrapolated station												
MD [ft]	Inclination [°]	Azimuth [°]	TVD [ft]	Vert Sect [ft]	North [ft]	East [ft]	Grid East [US ft]	Grid North [US ft]	Latitude	Longitude	DLS [°/100ft]	Comments
0.00†	0.000	236.641	0.00	0.00	0.00	0.00	3236361.20	1244940.28	40°00'9.5760"N	104°39'22.5720"W	0.00	
20.50	0.000	236.641	20.50	0.00	0.00	0.00	3236361.20	1244940.28	40°00'9.5760"N	104°39'22.5720"W	0.00	Tie On
120.50†	0.000	236.641	120.50	0.00	0.00	0.00	3236361.20	1244940.28	40°00'9.5760"N	104°39'22.5720"W	0.00	
200.00	0.000	236.641	200.00	0.00	0.00	0.00	3236361.20	1244940.28	40°00'9.5760"N	104°39'22.5720"W	0.00	End of Tangent
220.50†	0.410	236.641	220.50	-0.03	-0.04	-0.06	3236361.14	1244940.24	40°00'9.5756"N	104°39'22.5728"W	2.00	
320.50†	2.410	236.641	320.46	-1.05	-1.39	-2.12	3236359.10	1244938.87	40°00'9.5622"N	104°39'22.5992"W	2.00	
420.50†	4.410	236.641	420.28	-3.51	-4.66	-7.08	3236354.16	1244935.55	40°00'9.5299"N	104°39'22.6630"W	2.00	
520.50†	6.410	236.641	519.83	-7.41	-9.85	-14.96	3236346.34	1244930.29	40°00'9.4787"N	104°39'22.7642"W	2.00	
620.50†	8.410	236.641	618.99	-12.74	-16.94	-25.73	3236335.64	1244923.10	40°00'9.4086"N	104°39'22.9026"W	2.00	
720.50†	10.410	236.641	717.64	-19.51	-25.93	-39.39	3236322.07	1244913.98	40°00'9.3198"N	104°39'23.0781"W	2.00	
820.50†	12.410	236.641	815.66	-27.69	-36.81	-55.91	3236305.65	1244902.94	40°00'9.2123"N	104°39'23.2904"W	2.00	
900.89	14.018	236.641	893.91	-35.29	-46.91	-71.26	3236290.40	1244892.70	40°00'9.1124"N	104°39'23.4876"W	2.00	End of Build
920.50†	14.018	236.641	912.94	-37.26	-49.52	-75.22	3236286.46	1244890.05	40°00'9.0866"N	104°39'23.5386"W	0.00	
1020.50†	14.018	236.641	1009.97	-47.28	-62.84	-95.45	3236266.35	1244876.53	40°00'8.9550"N	104°39'23.7986"W	0.00	
1120.50†	14.018	236.641	1106.99	-57.30	-76.16	-115.69	3236246.25	1244863.02	40°00'8.8233"N	104°39'24.0586"W	0.00	
1220.50†	14.018	236.641	1204.01	-67.32	-89.48	-135.92	3236226.15	1244849.51	40°00'8.6917"N	104°39'24.3186"W	0.00	
1320.50†	14.018	236.641	1301.03	-77.34	-102.80	-156.15	3236206.04	1244836.00	40°00'8.5601"N	104°39'24.5785"W	0.00	
1420.50†	14.018	236.641	1398.06	-87.36	-116.12	-176.38	3236185.94	1244822.49	40°00'8.4285"N	104°39'24.8385"W	0.00	
1520.50†	14.018	236.641	1495.08	-97.38	-129.44	-196.61	3236165.84	1244808.98	40°00'8.2968"N	104°39'25.0985"W	0.00	
1620.50†	14.018	236.641	1592.10	-107.40	-142.76	-216.84	3236145.74	1244795.47	40°00'8.1652"N	104°39'25.3584"W	0.00	
1720.50†	14.018	236.641	1689.12	-117.42	-156.08	-237.07	3236125.63	1244781.96	40°00'8.0336"N	104°39'25.6184"W	0.00	
1820.50†	14.018	236.641	1786.14	-127.45	-169.40	-257.31	3236105.53	1244768.45	40°00'7.9019"N	104°39'25.8784"W	0.00	
1920.50†	14.018	236.641	1883.17	-137.47	-182.72	-277.54	3236085.43	1244754.94	40°00'7.7703"N	104°39'26.1384"W	0.00	
2020.50†	14.018	236.641	1980.19	-147.49	-196.04	-297.77	3236065.32	1244741.43	40°00'7.6387"N	104°39'26.3983"W	0.00	
2120.50†	14.018	236.641	2077.21	-157.51	-209.36	-318.00	3236045.22	1244727.92	40°00'7.5071"N	104°39'26.6583"W	0.00	
2220.50†	14.018	236.641	2174.23	-167.53	-222.68	-338.23	3236025.12	1244714.40	40°00'7.3754"N	104°39'26.9183"W	0.00	
2320.50†	14.018	236.641	2271.25	-177.55	-235.99	-358.46	3236005.01	1244700.89	40°00'7.2438"N	104°39'27.1782"W	0.00	
2420.50†	14.018	236.641	2368.28	-187.57	-249.31	-378.69	3235984.91	1244687.38	40°00'7.1122"N	104°39'27.4382"W	0.00	
2520.50†	14.018	236.641	2465.30	-197.59	-262.63	-398.93	3235964.81	1244673.87	40°00'6.9805"N	104°39'27.6982"W	0.00	
2620.50†	14.018	236.641	2562.32	-207.61	-275.95	-419.16	3235944.71	1244660.36	40°00'6.8489"N	104°39'27.9582"W	0.00	

Planned Wellpath Report

BUFORD 33-2-4L (REV-A.0) PWP

Page 3 of 10

REFERENCE WELLPATH IDENTIFICATION			
Operator	CONFLUENCE RESOURCES	Well	BUFORD 33-2-4L
Field	WELD COUNTY (NAD83, TRUE NORTH)	API/Legal	
Facility	SEC.34-T01N-R65W	Wellbore	BUFORD 33-2-4L PWB
Slot	SLOT#08 BUFORD 33-2-4L (770'FSL & 919'FWL, SEC.34)		

WELLPATH DATA (183 stations) † = interpolated, ‡ = extrapolated station												
MD [ft]	Inclination [°]	Azimuth [°]	TVD [ft]	Vert Sect [ft]	North [ft]	East [ft]	Grid East [US ft]	Grid North [US ft]	Latitude	Longitude	DLS [°/100ft]	Comments
2720.50†	14.018	236.641	2659.34	-217.63	-289.27	-439.39	3235924.60	1244646.85	40°00'6.7173"N	104°39'28.2181"W	0.00	
2820.50†	14.018	236.641	2756.36	-227.65	-302.59	-459.62	3235904.50	1244633.34	40°00'6.5857"N	104°39'28.4781"W	0.00	
2920.50†	14.018	236.641	2853.39	-237.67	-315.91	-479.85	3235884.40	1244619.83	40°00'6.4540"N	104°39'28.7381"W	0.00	
3020.50†	14.018	236.641	2950.41	-247.69	-329.23	-500.08	3235864.29	1244606.32	40°00'6.3224"N	104°39'28.9980"W	0.00	
3120.50†	14.018	236.641	3047.43	-257.72	-342.55	-520.31	3235844.19	1244592.81	40°00'6.1908"N	104°39'29.2580"W	0.00	
3220.50†	14.018	236.641	3144.45	-267.74	-355.87	-540.54	3235824.09	1244579.30	40°00'6.0591"N	104°39'29.5180"W	0.00	
3320.50†	14.018	236.641	3241.47	-277.76	-369.19	-560.78	3235803.98	1244565.79	40°00'5.9275"N	104°39'29.7779"W	0.00	
3420.50†	14.018	236.641	3338.50	-287.78	-382.51	-581.01	3235783.88	1244552.28	40°00'5.7959"N	104°39'30.0379"W	0.00	
3520.50†	14.018	236.641	3435.52	-297.80	-395.83	-601.24	3235763.78	1244538.76	40°00'5.6642"N	104°39'30.2979"W	0.00	
3620.50†	14.018	236.641	3532.54	-307.82	-409.15	-621.47	3235743.68	1244525.25	40°00'5.5326"N	104°39'30.5578"W	0.00	
3720.50†	14.018	236.641	3629.56	-317.84	-422.47	-641.70	3235723.57	1244511.74	40°00'5.4010"N	104°39'30.8178"W	0.00	
3820.50†	14.018	236.641	3726.59	-327.86	-435.79	-661.93	3235703.47	1244498.23	40°00'5.2693"N	104°39'31.0778"W	0.00	
3920.50†	14.018	236.641	3823.61	-337.88	-449.10	-682.16	3235683.37	1244484.72	40°00'5.1377"N	104°39'31.3377"W	0.00	
4020.50†	14.018	236.641	3920.63	-347.90	-462.42	-702.40	3235663.26	1244471.21	40°00'5.0061"N	104°39'31.5977"W	0.00	
4120.50†	14.018	236.641	4017.65	-357.92	-475.74	-722.63	3235643.16	1244457.70	40°00'4.8744"N	104°39'31.8577"W	0.00	
4220.50†	14.018	236.641	4114.67	-367.94	-489.06	-742.86	3235623.06	1244444.19	40°00'4.7428"N	104°39'32.1176"W	0.00	
4320.50†	14.018	236.641	4211.70	-377.96	-502.38	-763.09	3235602.95	1244430.68	40°00'4.6112"N	104°39'32.3776"W	0.00	
4420.50†	14.018	236.641	4308.72	-387.99	-515.70	-783.32	3235582.85	1244417.17	40°00'4.4795"N	104°39'32.6376"W	0.00	
4520.50†	14.018	236.641	4405.74	-398.01	-529.02	-803.55	3235562.75	1244403.66	40°00'4.3479"N	104°39'32.8975"W	0.00	
4620.50†	14.018	236.641	4502.76	-408.03	-542.34	-823.78	3235542.65	1244390.15	40°00'4.2163"N	104°39'33.1575"W	0.00	
4720.50†	14.018	236.641	4599.78	-418.05	-555.66	-844.02	3235522.54	1244376.64	40°00'4.0847"N	104°39'33.4175"W	0.00	
4820.50†	14.018	236.641	4696.81	-428.07	-568.98	-864.25	3235502.44	1244363.12	40°00'3.9530"N	104°39'33.6774"W	0.00	
4920.50†	14.018	236.641	4793.83	-438.09	-582.30	-884.48	3235482.34	1244349.61	40°00'3.8214"N	104°39'33.9374"W	0.00	
5020.50†	14.018	236.641	4890.85	-448.11	-595.62	-904.71	3235462.23	1244336.10	40°00'3.6898"N	104°39'34.1974"W	0.00	
5120.50†	14.018	236.641	4987.87	-458.13	-608.94	-924.94	3235442.13	1244322.59	40°00'3.5581"N	104°39'34.4573"W	0.00	
5220.50†	14.018	236.641	5084.89	-468.15	-622.26	-945.17	3235422.03	1244309.08	40°00'3.4265"N	104°39'34.7173"W	0.00	
5320.50†	14.018	236.641	5181.92	-478.17	-635.58	-965.40	3235401.92	1244295.57	40°00'3.2948"N	104°39'34.9772"W	0.00	
5420.50†	14.018	236.641	5278.94	-488.19	-648.90	-985.63	3235381.82	1244282.06	40°00'3.1632"N	104°39'35.2372"W	0.00	
5520.50†	14.018	236.641	5375.96	-498.21	-662.21	-1005.87	3235361.72	1244268.55	40°00'3.0316"N	104°39'35.4972"W	0.00	
5620.50†	14.018	236.641	5472.98	-508.23	-675.53	-1026.10	3235341.62	1244255.04	40°00'2.8999"N	104°39'35.7571"W	0.00	

Planned Wellpath Report

BUFORD 33-2-4L (REV-A.0) PWP

Page 4 of 10

REFERENCE WELLPATH IDENTIFICATION			
Operator	CONFLUENCE RESOURCES	Well	BUFORD 33-2-4L
Field	WELD COUNTY (NAD83, TRUE NORTH)	API/Legal	
Facility	SEC.34-T01N-R65W	Wellbore	BUFORD 33-2-4L PWB
Slot	SLOT#08 BUFORD 33-2-4L (770'FSL & 919'FWL, SEC.34)		

WELLPATH DATA (183 stations) † = interpolated, ‡ = extrapolated station												
MD [ft]	Inclination [°]	Azimuth [°]	TVD [ft]	Vert Sect [ft]	North [ft]	East [ft]	Grid East [US ft]	Grid North [US ft]	Latitude	Longitude	DLS [°/100ft]	Comments
5720.50†	14.018	236.641	5570.01	-518.26	-688.85	-1046.33	3235321.51	1244241.53	40°00'2.7683"N	104°39'36.0171"W	0.00	
5820.50†	14.018	236.641	5667.03	-528.28	-702.17	-1066.56	3235301.41	1244228.02	40°00'2.6367"N	104°39'36.2771"W	0.00	
5920.50†	14.018	236.641	5764.05	-538.30	-715.49	-1086.79	3235281.31	1244214.51	40°00'2.5050"N	104°39'36.5370"W	0.00	
6020.50†	14.018	236.641	5861.07	-548.32	-728.81	-1107.02	3235261.20	1244201.00	40°00'2.3734"N	104°39'36.7970"W	0.00	
6120.50†	14.018	236.641	5958.09	-558.34	-742.13	-1127.25	3235241.10	1244187.48	40°00'2.2418"N	104°39'37.0569"W	0.00	
6220.50†	14.018	236.641	6055.12	-568.36	-755.45	-1147.49	3235221.00	1244173.97	40°00'2.1101"N	104°39'37.3169"W	0.00	
6320.50†	14.018	236.641	6152.14	-578.38	-768.77	-1167.72	3235200.89	1244160.46	40°00'1.9785"N	104°39'37.5769"W	0.00	
6420.50†	14.018	236.641	6249.16	-588.40	-782.09	-1187.95	3235180.79	1244146.95	40°00'1.8469"N	104°39'37.8368"W	0.00	
6520.50†	14.018	236.641	6346.18	-598.42	-795.41	-1208.18	3235160.69	1244133.44	40°00'1.7152"N	104°39'38.0968"W	0.00	
6620.50†	14.018	236.641	6443.20	-608.44	-808.73	-1228.41	3235140.59	1244119.93	40°00'1.5836"N	104°39'38.3567"W	0.00	
6720.50†	14.018	236.641	6540.23	-618.46	-822.05	-1248.64	3235120.48	1244106.42	40°00'1.4520"N	104°39'38.6167"W	0.00	
6820.50†	14.018	236.641	6637.25	-628.48	-835.37	-1268.87	3235100.38	1244092.91	40°00'1.3203"N	104°39'38.8767"W	0.00	
6920.50†	14.018	236.641	6734.27	-638.50	-848.69	-1289.11	3235080.28	1244079.40	40°00'1.1887"N	104°39'39.1366"W	0.00	
7020.50†	14.018	236.641	6831.29	-648.52	-862.01	-1309.34	3235060.17	1244065.89	40°00'1.0570"N	104°39'39.3966"W	0.00	
7075.95	14.018	236.641	6885.09	-654.08	-869.39	-1320.56	3235049.03	1244058.40	40°00'0.9841"N	104°39'39.5407"W	0.00	End of Tangent
7120.50†	12.206	254.695	6928.50	-656.84	-873.60	-1329.61	3235040.01	1244054.10	40°00'0.9424"N	104°39'39.6570"W	10.00	
7220.50†	13.595	300.250	7026.21	-650.57	-870.46	-1350.01	3235019.59	1244057.04	40°00'0.9734"N	104°39'39.9192"W	10.00	
7320.50†	20.440	325.858	7121.91	-627.29	-850.04	-1370.01	3234999.39	1244077.27	40°00'1.1753"N	104°39'40.1762"W	10.00	
7420.50†	29.118	337.909	7212.67	-587.71	-812.95	-1389.01	3234980.04	1244114.18	40°00'1.5418"N	104°39'40.4204"W	10.00	
7520.50†	38.403	344.650	7295.74	-533.01	-760.32	-1406.43	3234962.12	1244166.64	40°00'2.0619"N	104°39'40.6442"W	10.00	
7620.50†	47.942	349.061	7368.61	-464.87	-693.75	-1421.73	3234946.19	1244233.06	40°00'2.7197"N	104°39'40.8410"W	10.00	
7720.50†	57.605	352.306	7429.04	-385.36	-615.26	-1434.46	3234932.71	1244311.42	40°00'3.4954"N	104°39'41.0046"W	10.00	
7820.50†	67.335	354.916	7475.21	-296.89	-527.24	-1444.23	3234922.11	1244399.34	40°00'4.3652"N	104°39'41.1301"W	10.00	
7920.50†	77.101	357.176	7505.72	-202.16	-432.37	-1450.74	3234914.70	1244494.15	40°00'5.3028"N	104°39'41.2138"W	10.00	
8020.50†	86.885	359.265	7519.64	-104.03	-333.51	-1453.78	3234910.71	1244592.96	40°00'6.2797"N	104°39'41.2531"W	10.00	
8051.72	89.941	359.904	7520.50†	-73.17	-302.32	-1454.01	3234910.19	1244624.16	40°00'6.5880"N	104°39'41.2560"W	10.00	End of 3D Arc
8120.50†	89.941	359.904	7520.57	-5.20	-233.53	-1454.13	3234909.42	1244692.93	40°00'7.2677"N	104°39'41.2575"W	0.00	
8220.50†	89.941	359.904	7520.67	93.62	-133.53	-1454.29	3234908.30	1244792.92	40°00'8.2560"N	104°39'41.2598"W	0.00	
8320.50†	89.941	359.904	7520.78	192.43	-33.53	-1454.46	3234907.18	1244892.91	40°00'9.2442"N	104°39'41.2620"W	0.00	
8420.50†	89.941	359.904	7520.88	291.25	66.47	-1454.63	3234906.06	1244992.90	40°00'10.2324"N	104°39'41.2642"W	0.00	

Planned Wellpath Report

BUFORD 33-2-4L (REV-A.0) PWP

Page 5 of 10

REFERENCE WELLPATH IDENTIFICATION			
Operator	CONFLUENCE RESOURCES	Well	BUFORD 33-2-4L
Field	WELD COUNTY (NAD83, TRUE NORTH)	API/Legal	
Facility	SEC.34-T01N-R65W	Wellbore	BUFORD 33-2-4L PWB
Slot	SLOT#08 BUFORD 33-2-4L (770'FSL & 919'FWL, SEC.34)		

WELLPATH DATA (183 stations) † = interpolated, ‡ = extrapolated station												
MD [ft]	Inclination [°]	Azimuth [°]	TVD [ft]	Vert Sect [ft]	North [ft]	East [ft]	Grid East [US ft]	Grid North [US ft]	Latitude	Longitude	DLS [°/100ft]	Comments
8520.50†	89.941	359.904	7520.98	390.06	166.47	-1454.80	3234904.94	1245092.89	40°00'11.2207°N	104°39'41.2665°W	0.00	
8620.50†	89.941	359.904	7521.09	488.88	266.47	-1454.97	3234903.82	1245192.88	40°00'12.2089°N	104°39'41.2687°W	0.00	
8720.50†	89.941	359.904	7521.19	587.70	366.47	-1455.13	3234902.70	1245292.87	40°00'13.1971°N	104°39'41.2709°W	0.00	
8820.50†	89.941	359.904	7521.30	686.51	466.47	-1455.30	3234901.58	1245392.86	40°00'14.1854°N	104°39'41.2732°W	0.00	
8920.50†	89.941	359.904	7521.40	785.33	566.47	-1455.47	3234900.46	1245492.85	40°00'15.1736°N	104°39'41.2754°W	0.00	
9020.50†	89.941	359.904	7521.50	884.14	666.47	-1455.64	3234899.34	1245592.84	40°00'16.1618°N	104°39'41.2776°W	0.00	
9120.50†	89.941	359.904	7521.61	982.96	766.47	-1455.81	3234898.22	1245692.83	40°00'17.1500°N	104°39'41.2799°W	0.00	
9220.50†	89.941	359.904	7521.71	1081.78	866.47	-1455.97	3234897.10	1245792.82	40°00'18.1383°N	104°39'41.2821°W	0.00	
9320.50†	89.941	359.904	7521.81	1180.59	966.47	-1456.14	3234895.98	1245892.81	40°00'19.1265°N	104°39'41.2843°W	0.00	
9420.50†	89.941	359.904	7521.92	1279.41	1066.47	-1456.31	3234894.87	1245992.80	40°00'20.1147°N	104°39'41.2866°W	0.00	
9520.50†	89.941	359.904	7522.02	1378.22	1166.47	-1456.48	3234893.75	1246092.79	40°00'21.1030°N	104°39'41.2888°W	0.00	
9620.50†	89.941	359.904	7522.12	1477.04	1266.47	-1456.64	3234892.63	1246192.78	40°00'22.0912°N	104°39'41.2910°W	0.00	
9720.50†	89.941	359.904	7522.23	1575.86	1366.47	-1456.81	3234891.51	1246292.77	40°00'23.0794°N	104°39'41.2933°W	0.00	
9820.50†	89.941	359.904	7522.33	1674.67	1466.47	-1456.98	3234890.39	1246392.76	40°00'24.0677°N	104°39'41.2955°W	0.00	
9920.50†	89.941	359.904	7522.43	1773.49	1566.47	-1457.15	3234889.27	1246492.75	40°00'25.0559°N	104°39'41.2977°W	0.00	
10020.50†	89.941	359.904	7522.54	1872.30	1666.46	-1457.32	3234888.15	1246592.74	40°00'26.0441°N	104°39'41.3000°W	0.00	
10120.50†	89.941	359.904	7522.64	1971.12	1766.46	-1457.48	3234887.03	1246692.73	40°00'27.0323°N	104°39'41.3022°W	0.00	
10220.50†	89.941	359.904	7522.74	2069.94	1866.46	-1457.65	3234885.91	1246792.72	40°00'28.0206°N	104°39'41.3044°W	0.00	
10320.50†	89.941	359.904	7522.85	2168.75	1966.46	-1457.82	3234884.79	1246892.72	40°00'29.0088°N	104°39'41.3067°W	0.00	
10420.50†	89.941	359.904	7522.95	2267.57	2066.46	-1457.99	3234883.67	1246992.71	40°00'29.9970°N	104°39'41.3089°W	0.00	
10520.50†	89.941	359.904	7523.05	2366.38	2166.46	-1458.16	3234882.55	1247092.70	40°00'30.9853°N	104°39'41.3111°W	0.00	
10620.50†	89.941	359.904	7523.16	2465.20	2266.46	-1458.32	3234881.43	1247192.69	40°00'31.9735°N	104°39'41.3134°W	0.00	
10720.50†	89.941	359.904	7523.26	2564.02	2366.46	-1458.49	3234880.31	1247292.68	40°00'32.9617°N	104°39'41.3156°W	0.00	
10820.50†	89.941	359.904	7523.36	2662.83	2466.46	-1458.66	3234879.19	1247392.67	40°00'33.9499°N	104°39'41.3178°W	0.00	
10920.50†	89.941	359.904	7523.47	2761.65	2566.46	-1458.83	3234878.07	1247492.66	40°00'34.9382°N	104°39'41.3201°W	0.00	
11020.50†	89.941	359.904	7523.57	2860.47	2666.46	-1459.00	3234876.96	1247592.65	40°00'35.9264°N	104°39'41.3223°W	0.00	
11120.50†	89.941	359.904	7523.67	2959.28	2766.46	-1459.16	3234875.84	1247692.64	40°00'36.9146°N	104°39'41.3245°W	0.00	
11220.50†	89.941	359.904	7523.78	3058.10	2866.46	-1459.33	3234874.72	1247792.63	40°00'37.9029°N	104°39'41.3268°W	0.00	
11320.50†	89.941	359.904	7523.88	3156.91	2966.46	-1459.50	3234873.60	1247892.62	40°00'38.8911°N	104°39'41.3290°W	0.00	
11420.50†	89.941	359.904	7523.98	3255.73	3066.46	-1459.67	3234872.48	1247992.61	40°00'39.8793°N	104°39'41.3312°W	0.00	

Planned Wellpath Report

BUFORD 33-2-4L (REV-A.0) PWP

Page 6 of 10

REFERENCE WELLPATH IDENTIFICATION			
Operator	CONFLUENCE RESOURCES	Well	BUFORD 33-2-4L
Field	WELD COUNTY (NAD83, TRUE NORTH)	API/Legal	
Facility	SEC.34-T01N-R65W	Wellbore	BUFORD 33-2-4L PWB
Slot	SLOT#08 BUFORD 33-2-4L (770'FSL & 919'FWL, SEC.34)		

WELLPATH DATA (183 stations) † = interpolated, ‡ = extrapolated station												
MD [ft]	Inclination [°]	Azimuth [°]	TVD [ft]	Vert Sect [ft]	North [ft]	East [ft]	Grid East [US ft]	Grid North [US ft]	Latitude	Longitude	DLS [°/100ft]	Comments
11520.50†	89.941	359.904	7524.09	3354.55	3166.46	-1459.84	3234871.36	1248092.60	40°00'40.8675"N	104°39'41.3335"W	0.00	
11620.50†	89.941	359.904	7524.19	3453.36	3266.46	-1460.00	3234870.24	1248192.59	40°00'41.8558"N	104°39'41.3357"W	0.00	
11720.50†	89.941	359.904	7524.29	3552.18	3366.46	-1460.17	3234869.12	1248292.58	40°00'42.8440"N	104°39'41.3379"W	0.00	
11820.50†	89.941	359.904	7524.40	3650.99	3466.46	-1460.34	3234868.00	1248392.57	40°00'43.8322"N	104°39'41.3402"W	0.00	
11920.50†	89.941	359.904	7524.50	3749.81	3566.46	-1460.51	3234866.88	1248492.56	40°00'44.8205"N	104°39'41.3424"W	0.00	
12020.50†	89.941	359.904	7524.60	3848.63	3666.46	-1460.68	3234865.76	1248592.55	40°00'45.8087"N	104°39'41.3446"W	0.00	
12120.50†	89.941	359.904	7524.71	3947.44	3766.46	-1460.84	3234864.64	1248692.54	40°00'46.7969"N	104°39'41.3469"W	0.00	
12220.50†	89.941	359.904	7524.81	4046.26	3866.46	-1461.01	3234863.52	1248792.53	40°00'47.7851"N	104°39'41.3491"W	0.00	
12320.50†	89.941	359.904	7524.92	4145.07	3966.46	-1461.18	3234862.40	1248892.52	40°00'48.7734"N	104°39'41.3513"W	0.00	
12420.50†	89.941	359.904	7525.02	4243.89	4066.46	-1461.35	3234861.28	1248992.51	40°00'49.7616"N	104°39'41.3536"W	0.00	
12520.50†	89.941	359.904	7525.12	4342.71	4166.46	-1461.52	3234860.16	1249092.50	40°00'50.7498"N	104°39'41.3558"W	0.00	
12620.50†	89.941	359.904	7525.23	4441.52	4266.46	-1461.68	3234859.05	1249192.49	40°00'51.7381"N	104°39'41.3581"W	0.00	
12720.50†	89.941	359.904	7525.33	4540.34	4366.46	-1461.85	3234857.93	1249292.48	40°00'52.7263"N	104°39'41.3603"W	0.00	
12820.50†	89.941	359.904	7525.43	4639.15	4466.46	-1462.02	3234856.81	1249392.47	40°00'53.7145"N	104°39'41.3625"W	0.00	
12920.50†	89.941	359.904	7525.54	4737.97	4566.46	-1462.19	3234855.69	1249492.46	40°00'54.7027"N	104°39'41.3648"W	0.00	
13020.50†	89.941	359.904	7525.64	4836.79	4666.46	-1462.35	3234854.57	1249592.45	40°00'55.6910"N	104°39'41.3670"W	0.00	
13120.50†	89.941	359.904	7525.74	4935.60	4766.46	-1462.52	3234853.45	1249692.44	40°00'56.6792"N	104°39'41.3692"W	0.00	
13220.50†	89.941	359.904	7525.85	5034.42	4866.46	-1462.69	3234852.33	1249792.43	40°00'57.6674"N	104°39'41.3715"W	0.00	
13320.50†	89.941	359.904	7525.95	5133.23	4966.46	-1462.86	3234851.21	1249892.42	40°00'58.6557"N	104°39'41.3737"W	0.00	
13420.50†	89.941	359.904	7526.05	5232.05	5066.46	-1463.03	3234850.09	1249992.41	40°00'59.6439"N	104°39'41.3759"W	0.00	
13520.50†	89.941	359.904	7526.16	5330.87	5166.46	-1463.19	3234848.97	1250092.40	40°01'0.6321"N	104°39'41.3782"W	0.00	
13620.50†	89.941	359.904	7526.26	5429.68	5266.46	-1463.36	3234847.85	1250192.39	40°01'1.6203"N	104°39'41.3804"W	0.00	
13720.50†	89.941	359.904	7526.36	5528.50	5366.46	-1463.53	3234846.73	1250292.38	40°01'2.6086"N	104°39'41.3826"W	0.00	
13820.50†	89.941	359.904	7526.47	5627.31	5466.46	-1463.70	3234845.61	1250392.37	40°01'3.5968"N	104°39'41.3849"W	0.00	
13920.50†	89.941	359.904	7526.57	5726.13	5566.46	-1463.87	3234844.49	1250492.36	40°01'4.5850"N	104°39'41.3871"W	0.00	
14020.50†	89.941	359.904	7526.67	5824.95	5666.46	-1464.03	3234843.37	1250592.35	40°01'5.5733"N	104°39'41.3893"W	0.00	
14120.50†	89.941	359.904	7526.78	5923.76	5766.46	-1464.20	3234842.26	1250692.34	40°01'6.5615"N	104°39'41.3916"W	0.00	
14220.50†	89.941	359.904	7526.88	6022.58	5866.46	-1464.37	3234841.14	1250792.33	40°01'7.5497"N	104°39'41.3938"W	0.00	
14320.50†	89.941	359.904	7526.98	6121.39	5966.46	-1464.54	3234840.02	1250892.32	40°01'8.5379"N	104°39'41.3960"W	0.00	
14420.50†	89.941	359.904	7527.09	6220.21	6066.46	-1464.71	3234838.90	1250992.31	40°01'9.5262"N	104°39'41.3983"W	0.00	

Planned Wellpath Report

BUFORD 33-2-4L (REV-A.0) PWP

Page 7 of 10

REFERENCE WELLPATH IDENTIFICATION			
Operator	CONFLUENCE RESOURCES	Well	BUFORD 33-2-4L
Field	WELD COUNTY (NAD83, TRUE NORTH)	API/Legal	
Facility	SEC.34-T01N-R65W	Wellbore	BUFORD 33-2-4L PWB
Slot	SLOT#08 BUFORD 33-2-4L (770'FSL & 919'FWL, SEC.34)		

WELLPATH DATA (183 stations) † = interpolated, ‡ = extrapolated station												
MD [ft]	Inclination [°]	Azimuth [°]	TVD [ft]	Vert Sect [ft]	North [ft]	East [ft]	Grid East [US ft]	Grid North [US ft]	Latitude	Longitude	DLS ["/100ft]	Comments
14520.50†	89.941	359.904	7527.19	6319.03	6166.46	-1464.87	3234837.78	1251092.30	40°01'10.5144"N	104°39'41.4005"W	0.00	
14620.50†	89.941	359.904	7527.29	6417.84	6266.46	-1465.04	3234836.66	1251192.29	40°01'11.5026"N	104°39'41.4027"W	0.00	
14720.50†	89.941	359.904	7527.40	6516.66	6366.46	-1465.21	3234835.54	1251292.28	40°01'12.4909"N	104°39'41.4050"W	0.00	
14820.50†	89.941	359.904	7527.50	6615.47	6466.46	-1465.38	3234834.42	1251392.27	40°01'13.4791"N	104°39'41.4072"W	0.00	
14920.50†	89.941	359.904	7527.60	6714.29	6566.46	-1465.55	3234833.30	1251492.26	40°01'14.4673"N	104°39'41.4094"W	0.00	
15020.50†	89.941	359.904	7527.71	6813.11	6666.46	-1465.71	3234832.18	1251592.25	40°01'15.4555"N	104°39'41.4117"W	0.00	
15120.50†	89.941	359.904	7527.81	6911.92	6766.46	-1465.88	3234831.06	1251692.24	40°01'16.4438"N	104°39'41.4139"W	0.00	
15220.50†	89.941	359.904	7527.91	7010.74	6866.45	-1466.05	3234829.94	1251792.23	40°01'17.4320"N	104°39'41.4161"W	0.00	
15320.50†	89.941	359.904	7528.02	7109.55	6966.45	-1466.22	3234828.82	1251892.22	40°01'18.4202"N	104°39'41.4184"W	0.00	
15420.50†	89.941	359.904	7528.12	7208.37	7066.45	-1466.39	3234827.70	1251992.21	40°01'19.4085"N	104°39'41.4206"W	0.00	
15520.50†	89.941	359.904	7528.23	7307.19	7166.45	-1466.55	3234826.58	1252092.20	40°01'20.3967"N	104°39'41.4228"W	0.00	
15620.50†	89.941	359.904	7528.33	7406.00	7266.45	-1466.72	3234825.46	1252192.19	40°01'21.3849"N	104°39'41.4251"W	0.00	
15720.50†	89.941	359.904	7528.43	7504.82	7366.45	-1466.89	3234824.35	1252292.18	40°01'22.3731"N	104°39'41.4273"W	0.00	
15820.50†	89.941	359.904	7528.54	7603.64	7466.45	-1467.06	3234823.23	1252392.17	40°01'23.3614"N	104°39'41.4296"W	0.00	
15920.50†	89.941	359.904	7528.64	7702.45	7566.45	-1467.23	3234822.11	1252492.16	40°01'24.3496"N	104°39'41.4318"W	0.00	
16020.50†	89.941	359.904	7528.74	7801.27	7666.45	-1467.39	3234820.99	1252592.15	40°01'25.3378"N	104°39'41.4340"W	0.00	
16120.50†	89.941	359.904	7528.85	7900.08	7766.45	-1467.56	3234819.87	1252692.14	40°01'26.3260"N	104°39'41.4363"W	0.00	
16220.50†	89.941	359.904	7528.95	7998.90	7866.45	-1467.73	3234818.75	1252792.13	40°01'27.3143"N	104°39'41.4385"W	0.00	
16320.50†	89.941	359.904	7529.05	8097.72	7966.45	-1467.90	3234817.63	1252892.12	40°01'28.3025"N	104°39'41.4407"W	0.00	
16420.50†	89.941	359.904	7529.16	8196.53	8066.45	-1468.06	3234816.51	1252992.11	40°01'29.2907"N	104°39'41.4430"W	0.00	
16520.50†	89.941	359.904	7529.26	8295.35	8166.45	-1468.23	3234815.39	1253092.10	40°01'30.2790"N	104°39'41.4452"W	0.00	
16620.50†	89.941	359.904	7529.36	8394.16	8266.45	-1468.40	3234814.27	1253192.09	40°01'31.2672"N	104°39'41.4474"W	0.00	
16720.50†	89.941	359.904	7529.47	8492.98	8366.45	-1468.57	3234813.15	1253292.08	40°01'32.2554"N	104°39'41.4497"W	0.00	
16820.50†	89.941	359.904	7529.57	8591.80	8466.45	-1468.74	3234812.03	1253392.07	40°01'33.2436"N	104°39'41.4519"W	0.00	
16920.50†	89.941	359.904	7529.67	8690.61	8566.45	-1468.90	3234810.91	1253492.06	40°01'34.2319"N	104°39'41.4541"W	0.00	
17020.50†	89.941	359.904	7529.78	8789.43	8666.45	-1469.07	3234809.79	1253592.05	40°01'35.2201"N	104°39'41.4564"W	0.00	
17120.50†	89.941	359.904	7529.88	8888.24	8766.45	-1469.24	3234808.67	1253692.04	40°01'36.2083"N	104°39'41.4586"W	0.00	
17220.50†	89.941	359.904	7529.98	8987.06	8866.45	-1469.41	3234807.55	1253792.03	40°01'37.1965"N	104°39'41.4608"W	0.00	
17320.50†	89.941	359.904	7530.09	9085.88	8966.45	-1469.58	3234806.44	1253892.02	40°01'38.1848"N	104°39'41.4631"W	0.00	
17420.50†	89.941	359.904	7530.19	9184.69	9066.45	-1469.74	3234805.32	1253992.01	40°01'39.1730"N	104°39'41.4653"W	0.00	

Planned Wellpath Report

BUFORD 33-2-4L (REV-A.0) PWP

Page 8 of 10

REFERENCE WELLPATH IDENTIFICATION			
Operator	CONFLUENCE RESOURCES	Well	BUFORD 33-2-4L
Field	WELD COUNTY (NAD83, TRUE NORTH)	API/Legal	
Facility	SEC.34-T01N-R65W	Wellbore	BUFORD 33-2-4L PWB
Slot	SLOT#08 BUFORD 33-2-4L (770°FSL & 919°FWL, SEC.34)		

WELLPATH DATA (183 stations) † = interpolated, ‡ = extrapolated station												
MD [ft]	Inclination [°]	Azimuth [°]	TVD [ft]	Vert Sect [ft]	North [ft]	East [ft]	Grid East [US ft]	Grid North [US ft]	Latitude	Longitude	DLS [°/100ft]	Comments
17520.50†	89.941	359.904	7530.29	9283.51	9166.45	-1469.91	3234804.20	1254092.00	40°01'40.1612"N	104°39'41.4675"W	0.00	
17620.50†	89.941	359.904	7530.40	9382.32	9266.45	-1470.08	3234803.08	1254191.99	40°01'41.1495"N	104°39'41.4698"W	0.00	
17719.92	89.941	359.904	7530.50‡	9480.57	9365.87	-1470.25	3234801.96	1254291.41	40°01'42.1320"N	104°39'41.4720"W	0.00	End of Tangent

TARGETS									
Name	MD [ft]	TVD [ft]	North [ft]	East [ft]	Grid East [US ft]	Grid North [US ft]	Latitude	Longitude	Shape
SEC 28-T01N-R65W	N/A	1.00	0.00	-151.28	3236209.93	1244938.84	40°00'9.5760"N	104°39'24.5160"W	polygon
	2D Polygon: dimensions not calculated								
SEC 33-T01N-R65W	N/A	1.00	0.00	-151.28	3236209.93	1244938.84	40°00'9.5760"N	104°39'24.5160"W	polygon
	2D Polygon: dimensions not calculated								
SEC 34-T01N-R65W	N/A	1.00	0.00	-151.28	3236209.93	1244938.84	40°00'9.5760"N	104°39'24.5160"W	polygon
	2D Polygon: dimensions not calculated								
1) BUFORD 33-2-4L LP REV-1 (470°FSL & 536°FEL, SEC.33)	8051.72	7520.50	-302.32	-1454.01	3234910.19	1244624.16	40°00'6.5880"N	104°39'41.2560"W	point
2) BUFORD 33-2-4L BHL REV-1 (470°FNL & 536°FEL, SEC.28)	17719.92	7530.50	9365.87	-1470.25	3234801.96	1254291.41	40°01'42.1320"N	104°39'41.4720"W	point

Planned Wellpath Report

BUFORD 33-2-4L (REV-A.0) PWP

Page 9 of 10

REFERENCE WELLPATH IDENTIFICATION			
Operator	CONFLUENCE RESOURCES	Well	BUFORD 33-2-4L
Field	WELD COUNTY (NAD83, TRUE NORTH)	API/Legal	
Facility	SEC.34-T01N-R65W	Wellbore	BUFORD 33-2-4L PWB
Slot	SLOT#08 BUFORD 33-2-4L (770'FSL & 919'FWL, SEC.34)		

SURVEY PROGRAM - Ref Wellbore: BUFORD 33-2-4L PWB Ref Wellpath: BUFORD 33-2-4L (REV-A.0) PWP				
Start MD [ft]	End MD [ft]	Positional Uncertainty Model	Log Name/Comment	Wellbore
20.50	1500.00	BH NaviTrak (2019) (Standard)		BUFORD 33-2-4L PWB
1500.00	17739.55	BH AutoTrak Curve/eXpress (2019) (Standard)		BUFORD 33-2-4L PWB

Planned Wellpath Report

BUFORD 33-2-4L (REV-A.0) PWP

Page 10 of 10

REFERENCE WELLPATH IDENTIFICATION			
Operator	CONFLUENCE RESOURCES	Well	BUFORD 33-2-4L
Field	WELD COUNTY (NAD83, TRUE NORTH)	API/Legal	
Facility	SEC.34-T01N-R65W	Wellbore	BUFORD 33-2-4L PWB
Slot	SLOT#08 BUFORD 33-2-4L (770'FSL & 919'FWL, SEC.34)		

DESIGN COMMENTS				
MD [ft]	Inclination [°]	Azimuth [°]	TVD [ft]	Comment
20.50	0.000	236.641	20.50	Tie On
200.00	0.000	236.641	200.00	End of Tangent
900.89	14.018	236.641	893.91	End of Build
7075.95	14.018	236.641	6885.09	End of Tangent
8051.72	89.941	359.904	7520.50	End of 3D Arc
17719.92	89.941	359.904	7530.50	End of Tangent