



GeoEnergy Monitoring Systems
167 Piedra Loop
Los Alamos, NM 87547

(505) 412-2841
srt@geoems.com

Neel Duncan
Integrated Petroleum Technologies, Inc.
1707 Cole Blvd, Suite 200
Golden, CO 80401

November 3, 2020

Dear Neel:

Summary

NGL C1 facility consists of three wells, two of which are vertical (C1A and C1B) and one horizontal (C1C) (**Figure 1**). **Figure 2** shows the C1 facility relative to NGL seismic stations in the vicinity. Seismic station C3A is located approximately 12 km to the southwest of the C1 facility and has been operational since October 15, 2014. Figure 2 also shows estimated seismic detection levels from seismic station C3A as well as seismicity located by GeoEMS. Station C3A should be able to detect events down to approximately 1.2 in the vicinity of the C1 facility.

There has been no detected seismicity within 10 km of the C1 facility.

Sincerely,

A handwritten signature in black ink that reads "Steven R. Taylor". The signature is written in a cursive style with a large, stylized "S" and "T".

Steven R. Taylor
Chief Scientist

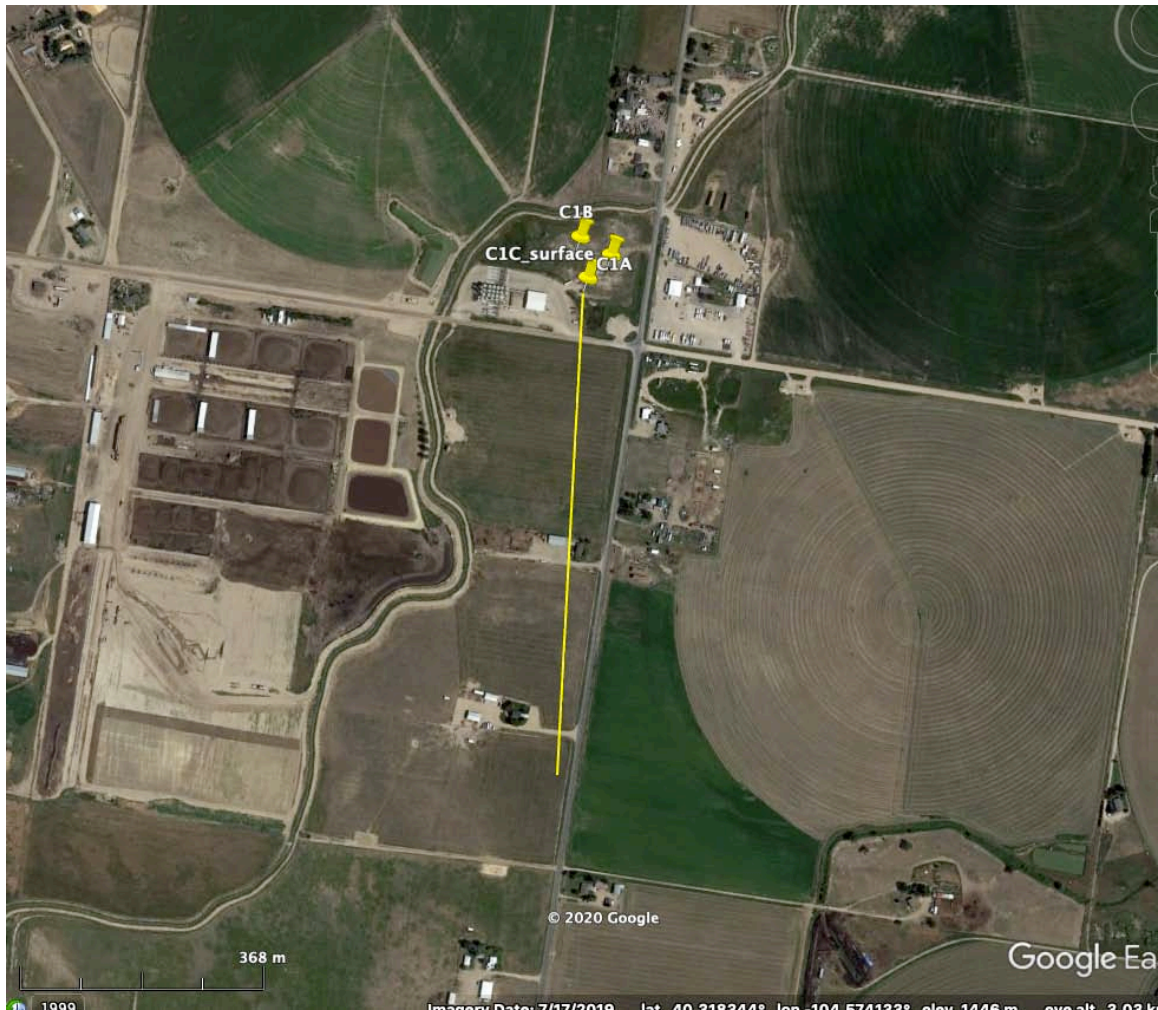


Figure 1. Close up of NGL C1 facility showing surface well locations for C1A, C1B and C1C as yellow pushpins. Yellow line shows surface projection from C1C to bottom of well.

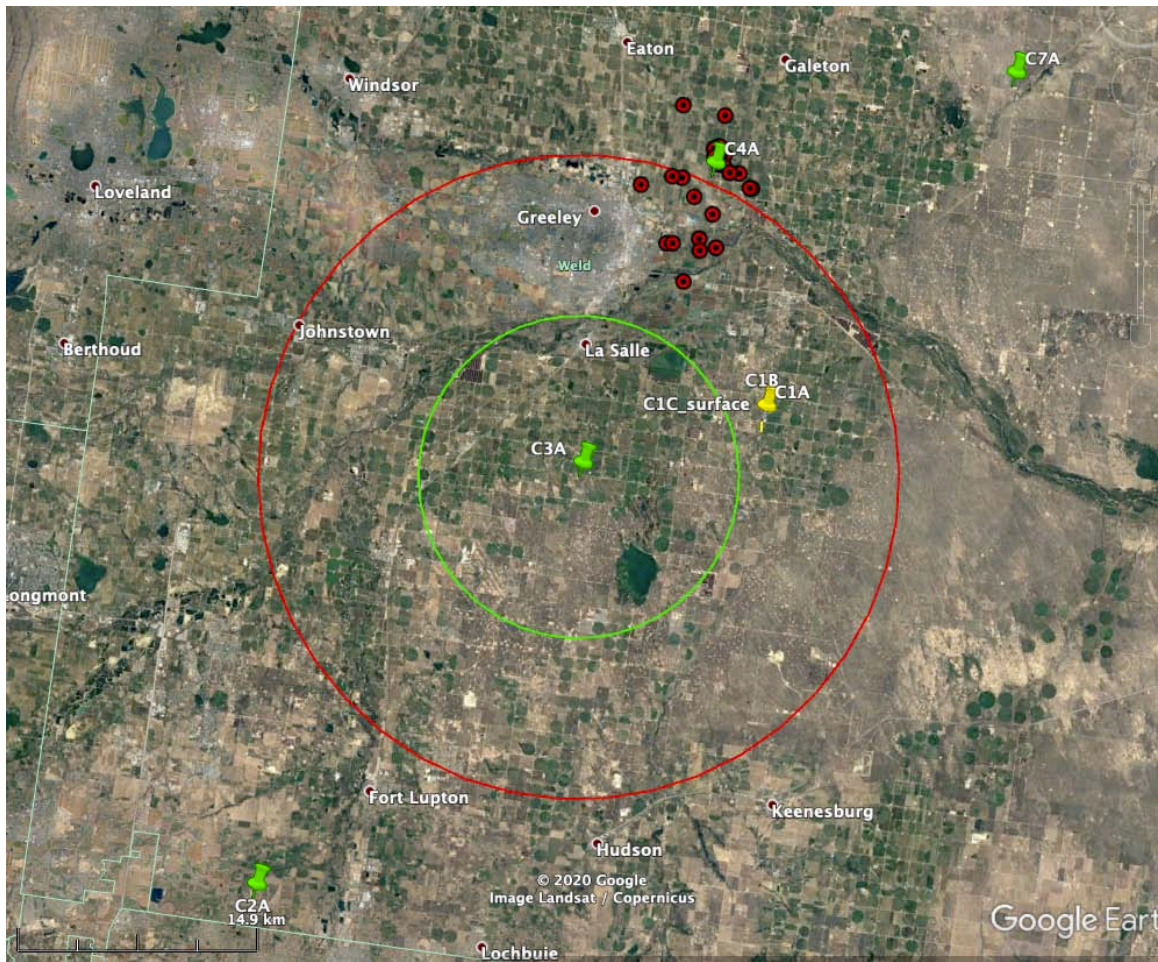


Figure 2. NGL seismic stations shown as green pushpins. NGL seismic station location C3A with estimated detection levels for M 1.0 (green circles) and M 1.5 (red circles). GeoEMS located seismicity shown as red dots.