



CEMENT BOND LOG
GAMMA RAY CCL VDL

| | | | |
|------------------------|----------------------|-----------|---|
| Company | EXTRACTION OIL & GAS | | |
| Well | 392 VENTURES 22ND | | |
| Field | WATTENBERG | | |
| County | WELD | State | COLORADO |
| Location: | API # : 05-123-34139 | | Other Services |
| | SENN | | NONE |
| Permanent Datum | SEC 22 | TWP 6N | RGE 67W |
| Log Measured From | KB | Elevation | 4,783' |
| Drilling Measured From | KB | | K.B. 4,795' D.F. 4,794' G.L. 4,783' |

| | |
|------------------------|-----------------|
| Date | 22 AUG 2019 |
| Run Number | ONE |
| Depth Driller | 7,416' |
| Depth Logger | 2,050' |
| Bottom Logged Interval | 2,000' |
| Top Log Interval | SURFACE |
| Open Hole Size | 7-7/8" |
| Type Fluid | WATER |
| Density / Viscosity | 8.34 PPG |
| Max. Recorded Temp. | N/A |
| Estimated Cement Top | SEE LOG |
| Time Well Ready | 1000 |
| Time Logger on Bottom | 1030 |
| Equipment Number | 25 |
| Location | PLATTEVILLE, CO |
| Recorded By | B. TURNBULL |
| Witnessed By | E. CHAVEZ |
| Borehole Record | |
| Run Number | Bit |
| | From |
| | To |
| | Size |
| | Weight |
| | From |
| | To |
| Tubing Record | |
| Casing Record | Size |
| Surface String | 8-5/8" |
| Prot. String | 24# |
| Production String | 4-1/2" |
| Liner | 11.6# |
| | Top |
| | Bottom |
| | 456' |
| | 7,406' |

<<< Fold Here >>>

All interpretations are opinions based on inferences from electrical or other measurements and we cannot and do not guarantee the accuracy or correctness of any interpretation, and we shall not, except in the case of gross or willful negligence on our part, be liable or responsible for any loss, costs, damages, or expenses incurred or sustained by anyone resulting from any interpretation made by any of our officers, agents or employees. These interpretations are also subject to our general terms and conditions set out in our current Price Schedule.

Comments

CEMENT BOND LOG AS PER CUSTOMER REQUEST
LOGGED UNDER 0 PSI INDUCED SURFACE PRESSURE & USED 12' KB

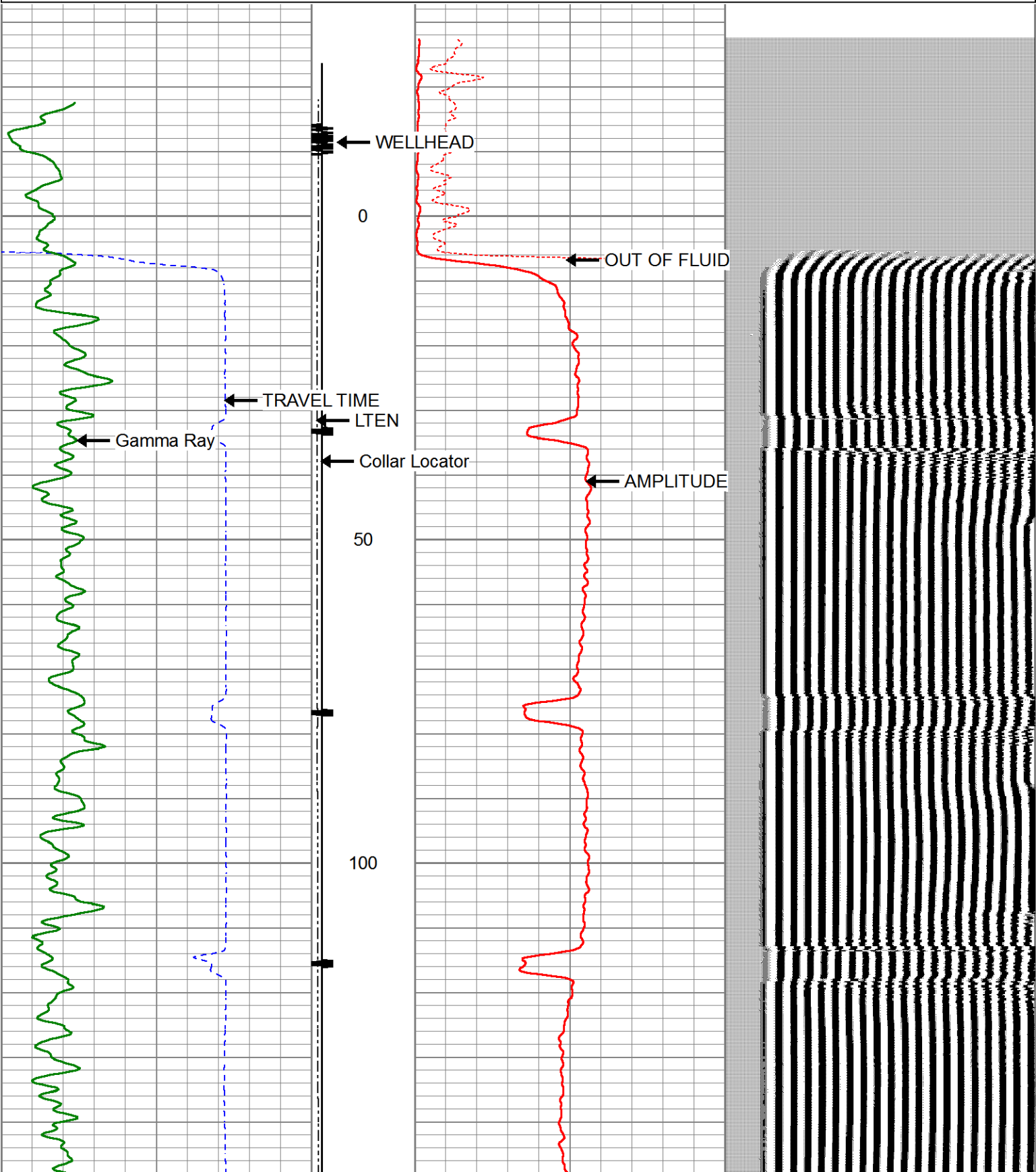
THANK YOU FOR USING KLX ENERGY SERVICES

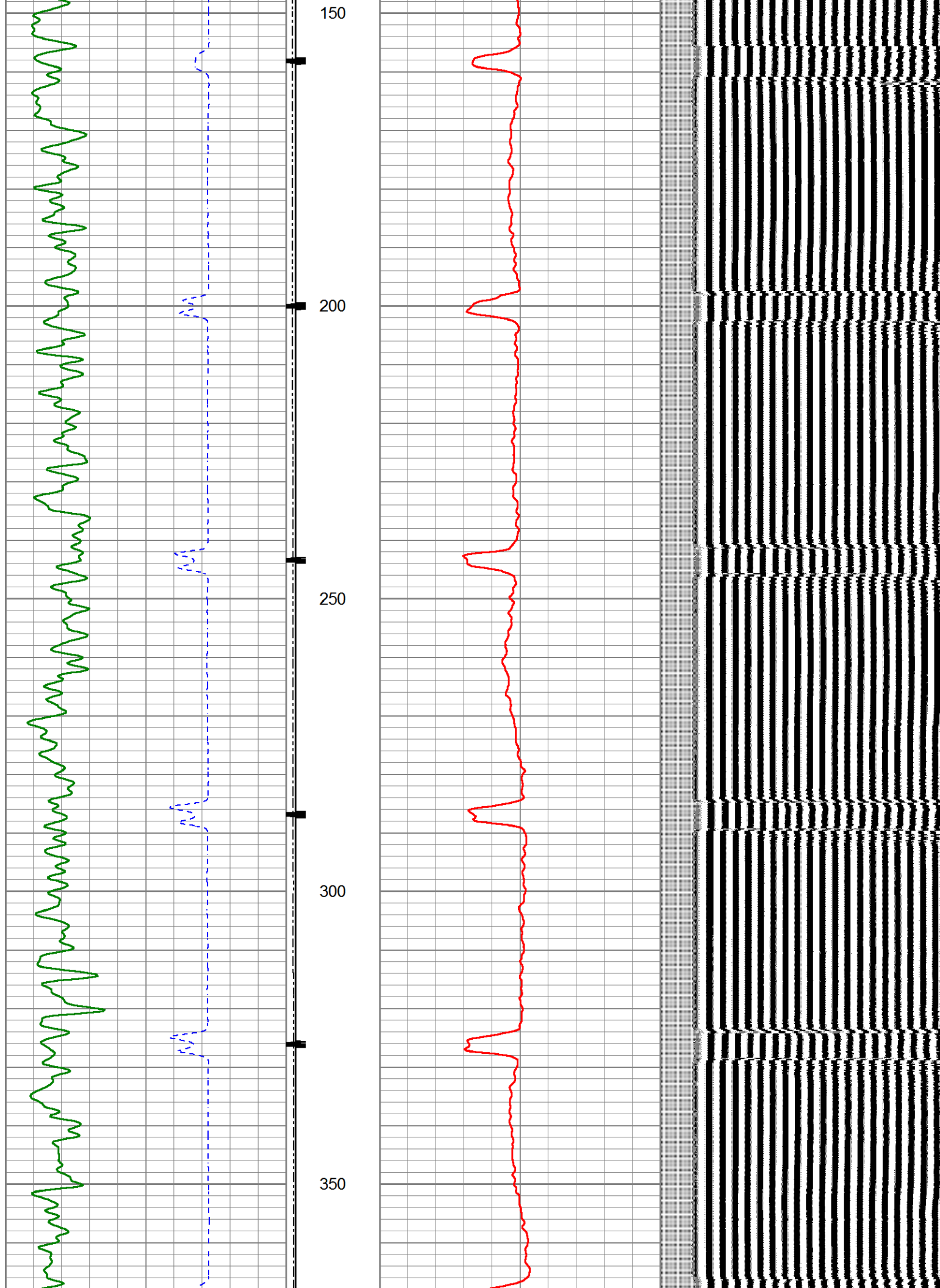


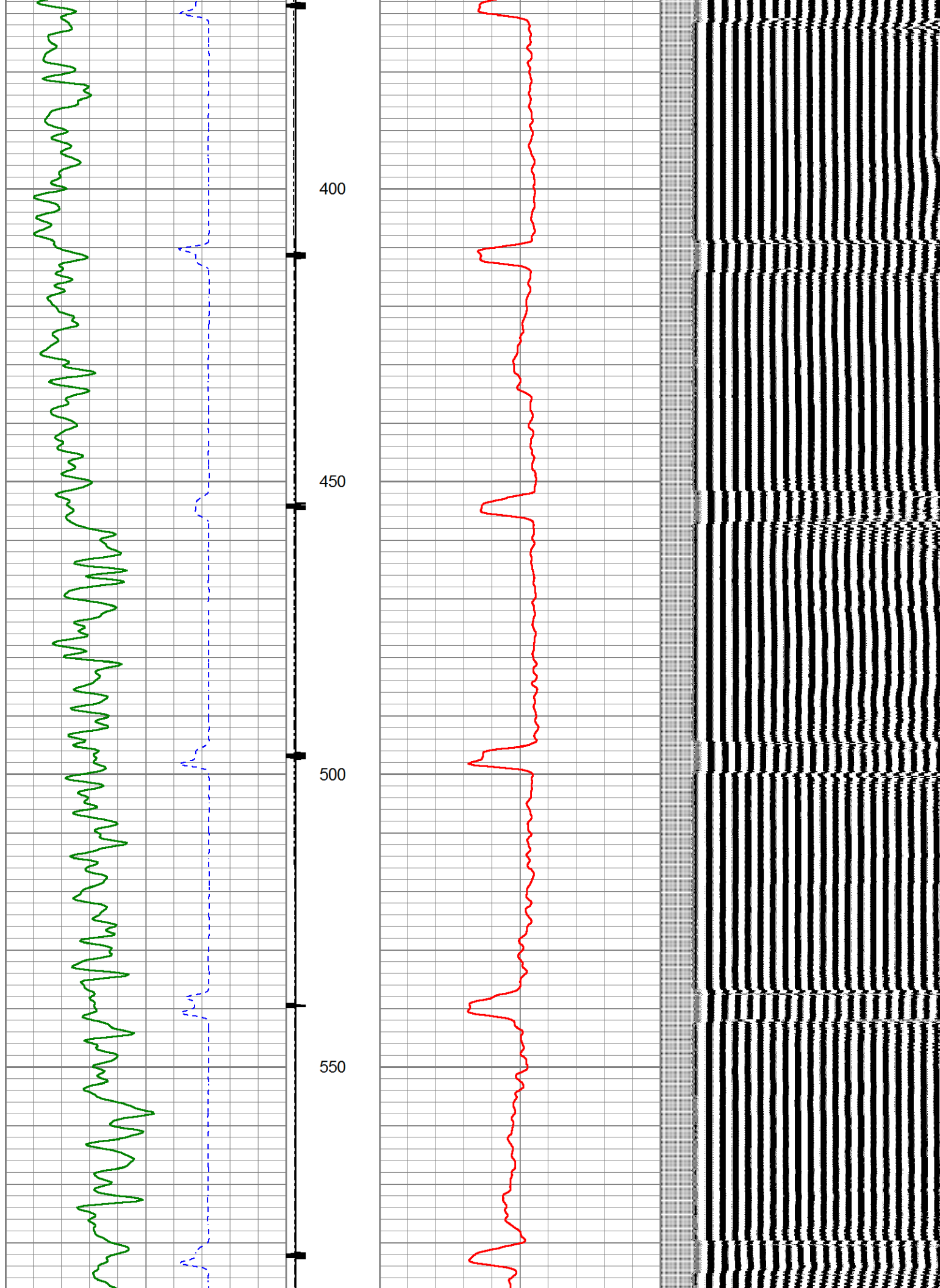
MAIN PASS

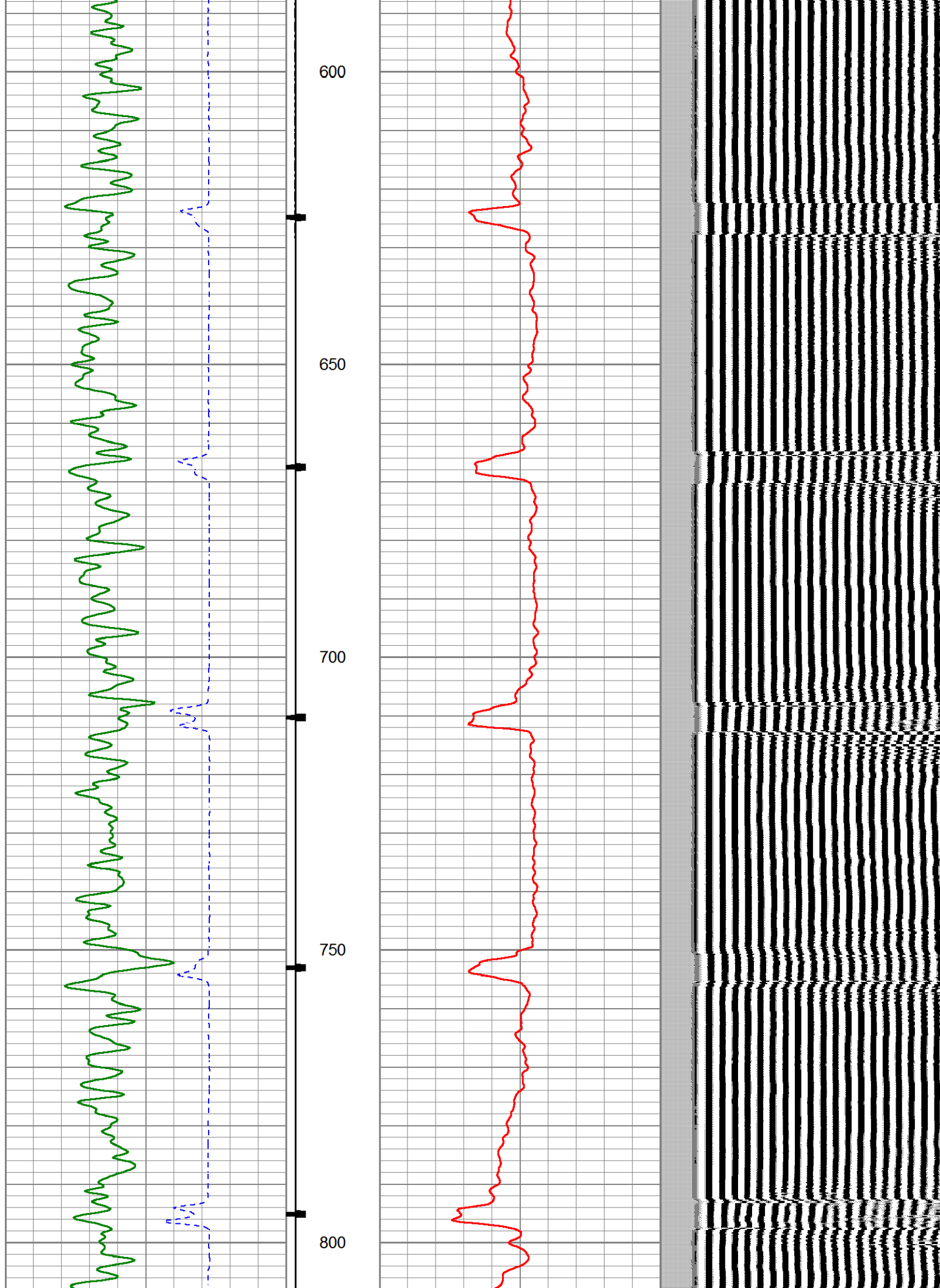
| | |
|---------------------|----------------------------|
| Database File | xog_plu_cbl_8-22-19.db |
| Dataset Pathname | pass14 |
| Presentation Format | cbl_drs |
| Dataset Creation | Thu Aug 22 11:39:13 2019 |
| Charted by | Depth in Feet scaled 1:240 |

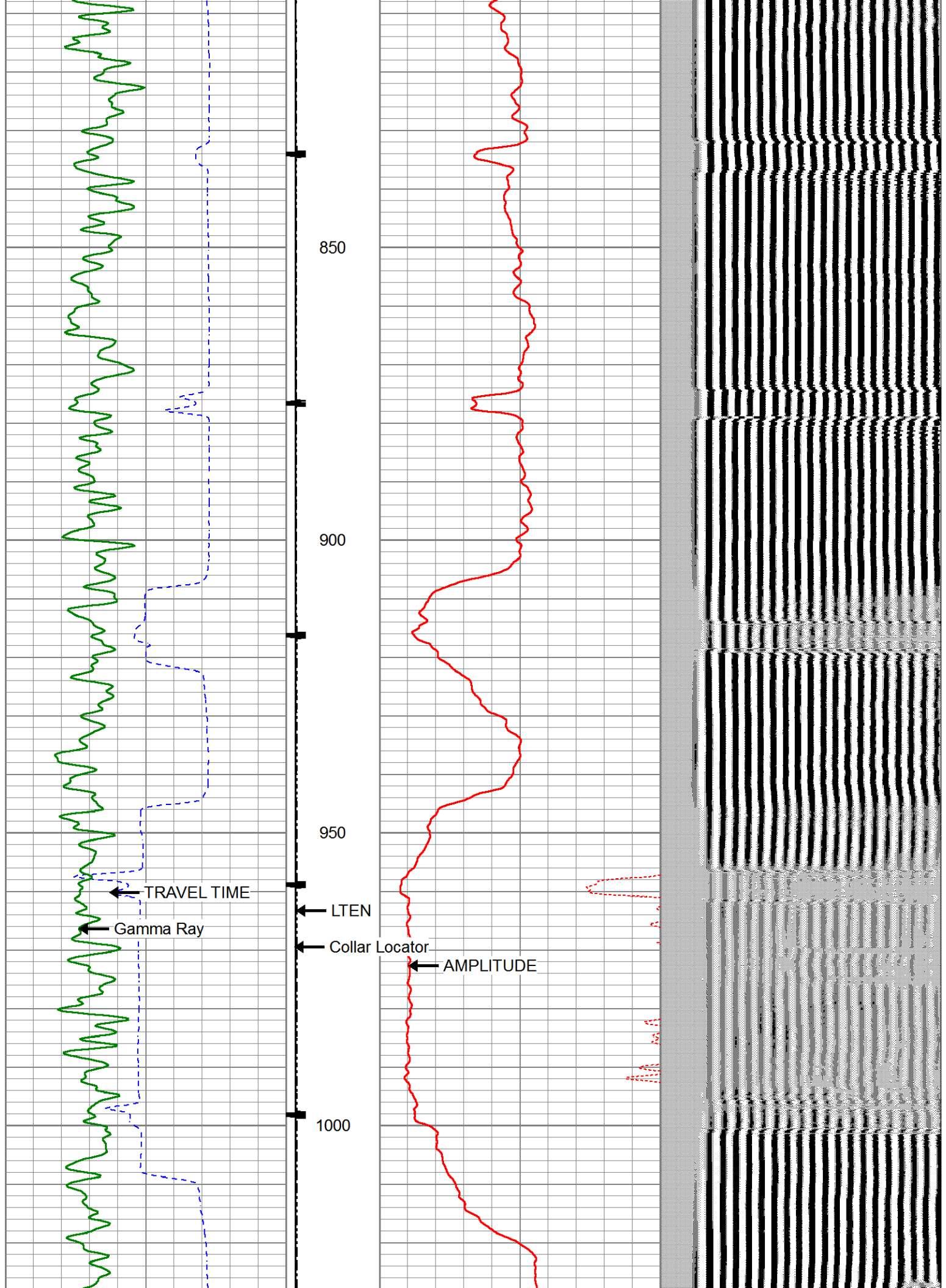
| | | | | | | | | | |
|-----|--------------------|-----|----------------|-----|--------------------|-----|-----|------------|------|
| 400 | TRAVEL TIME (usec) | 200 | Collar Locator | 0 | AMP AMPLITUDE (mV) | 10 | 200 | VDL (usec) | 1200 |
| 0 | Gamma Ray (GAPI) | 150 | -1 | 9 0 | AMPLITUDE (mV) | 100 | | | |
| | | | LTEN | | | | | | |
| | | | 0 (lb/2000) | | | | | | |

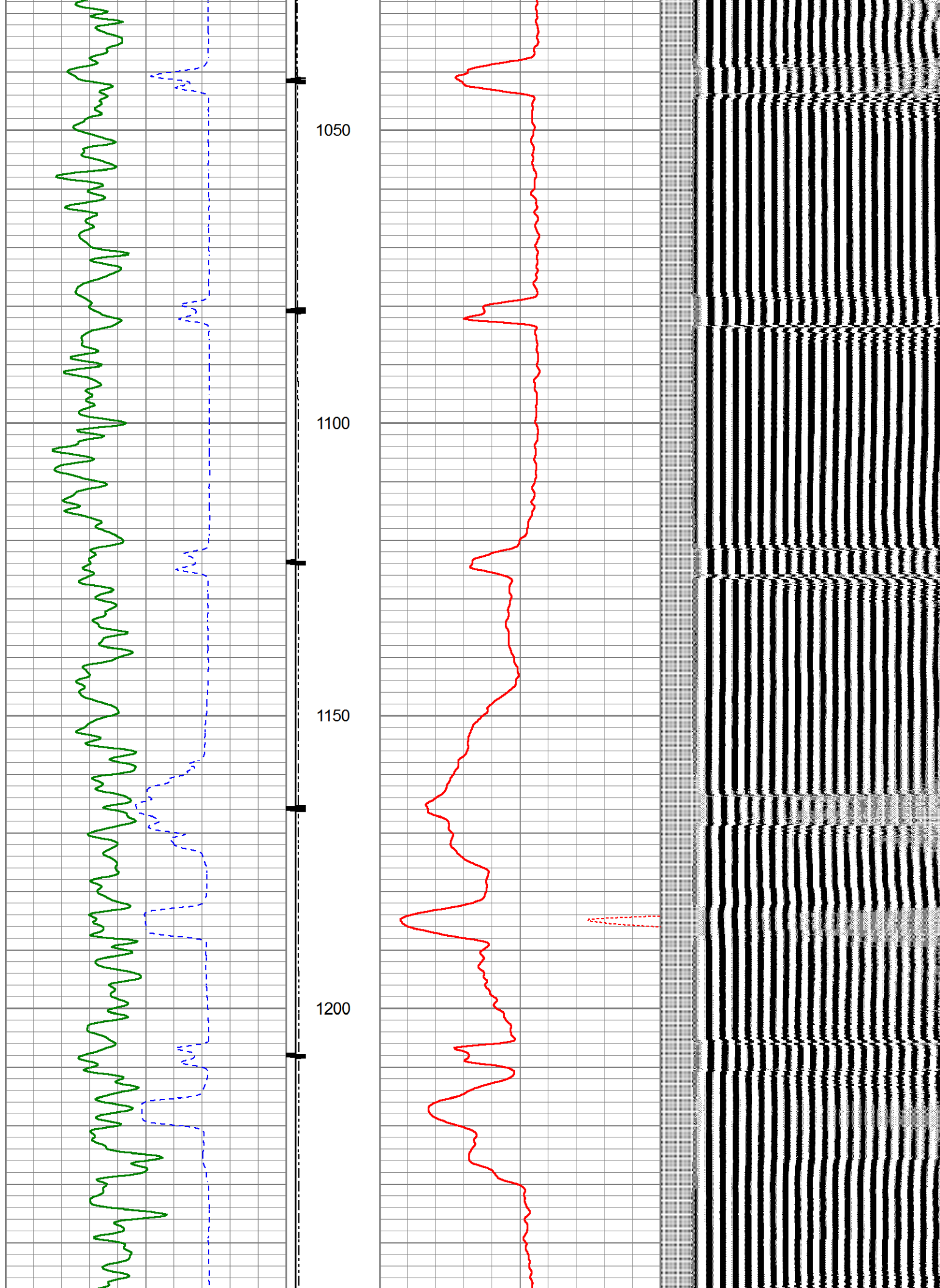


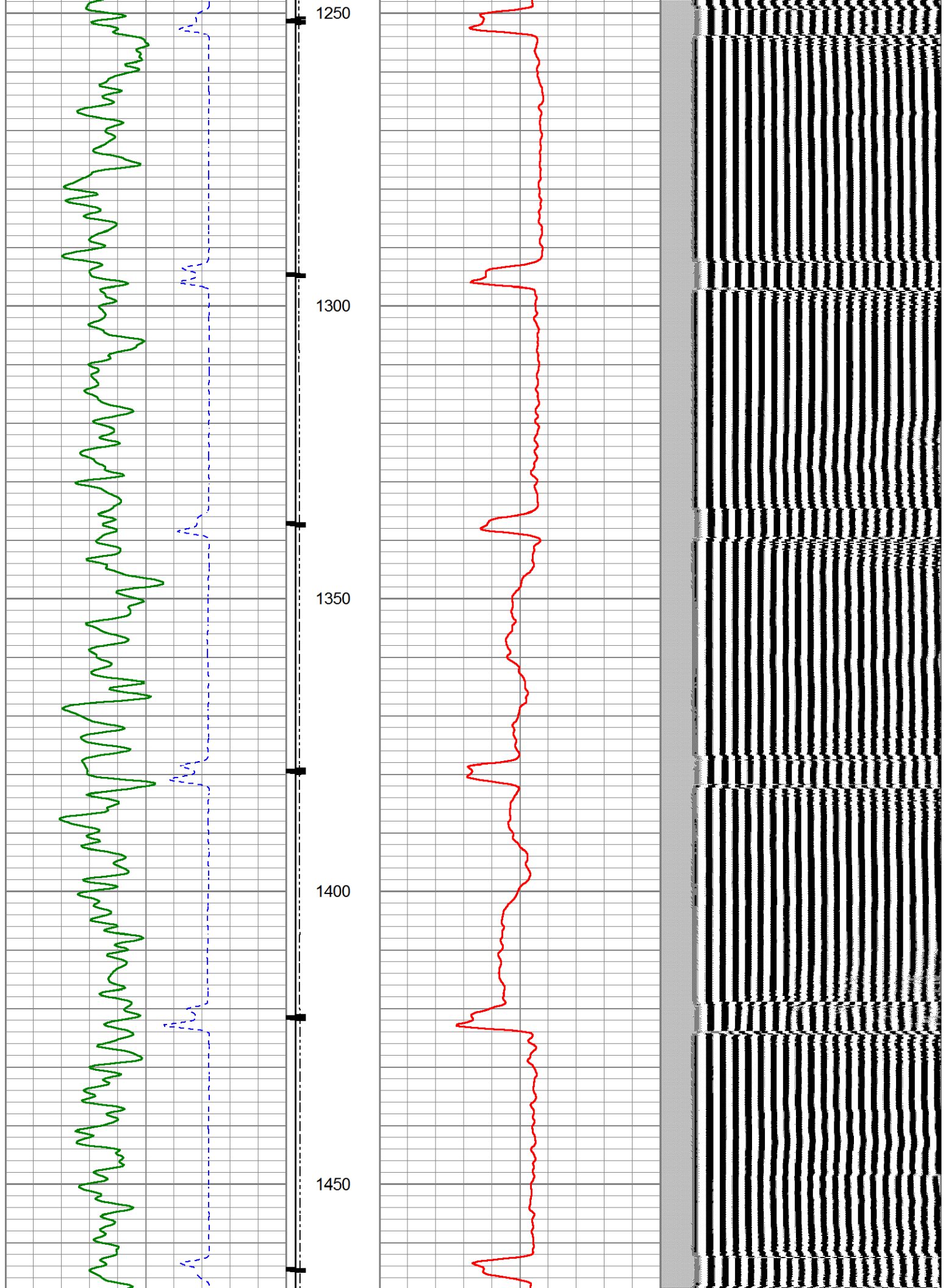


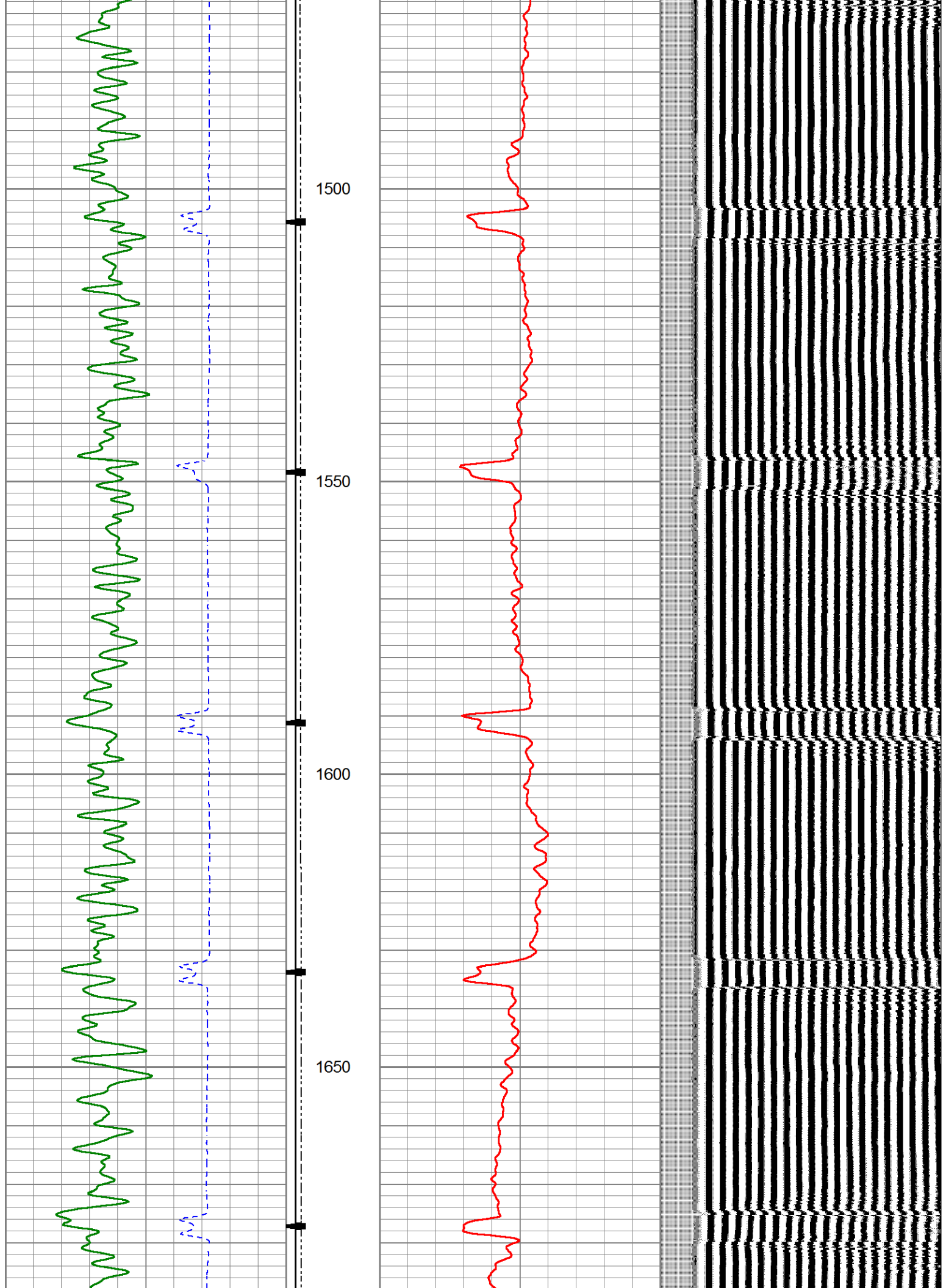


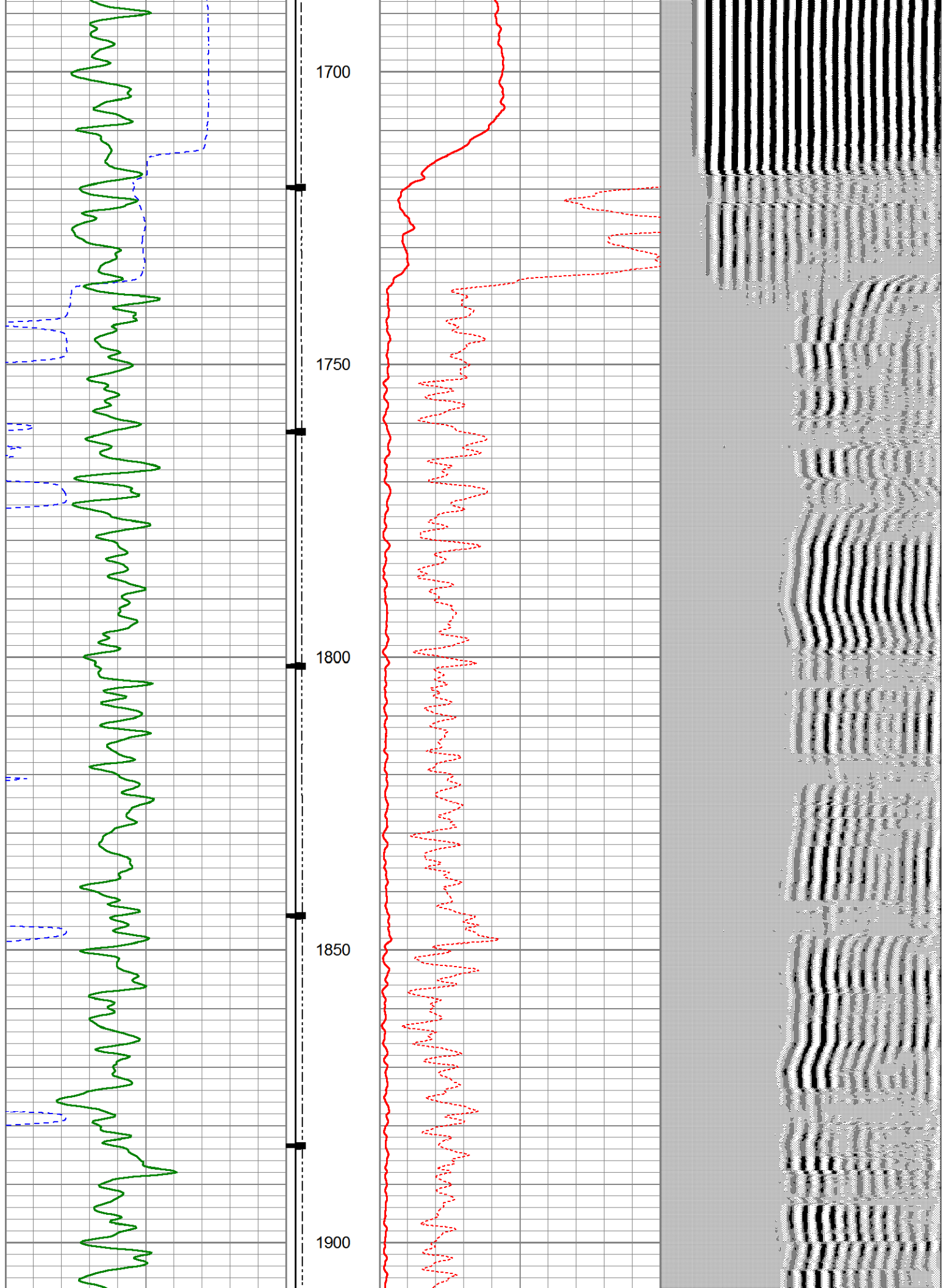


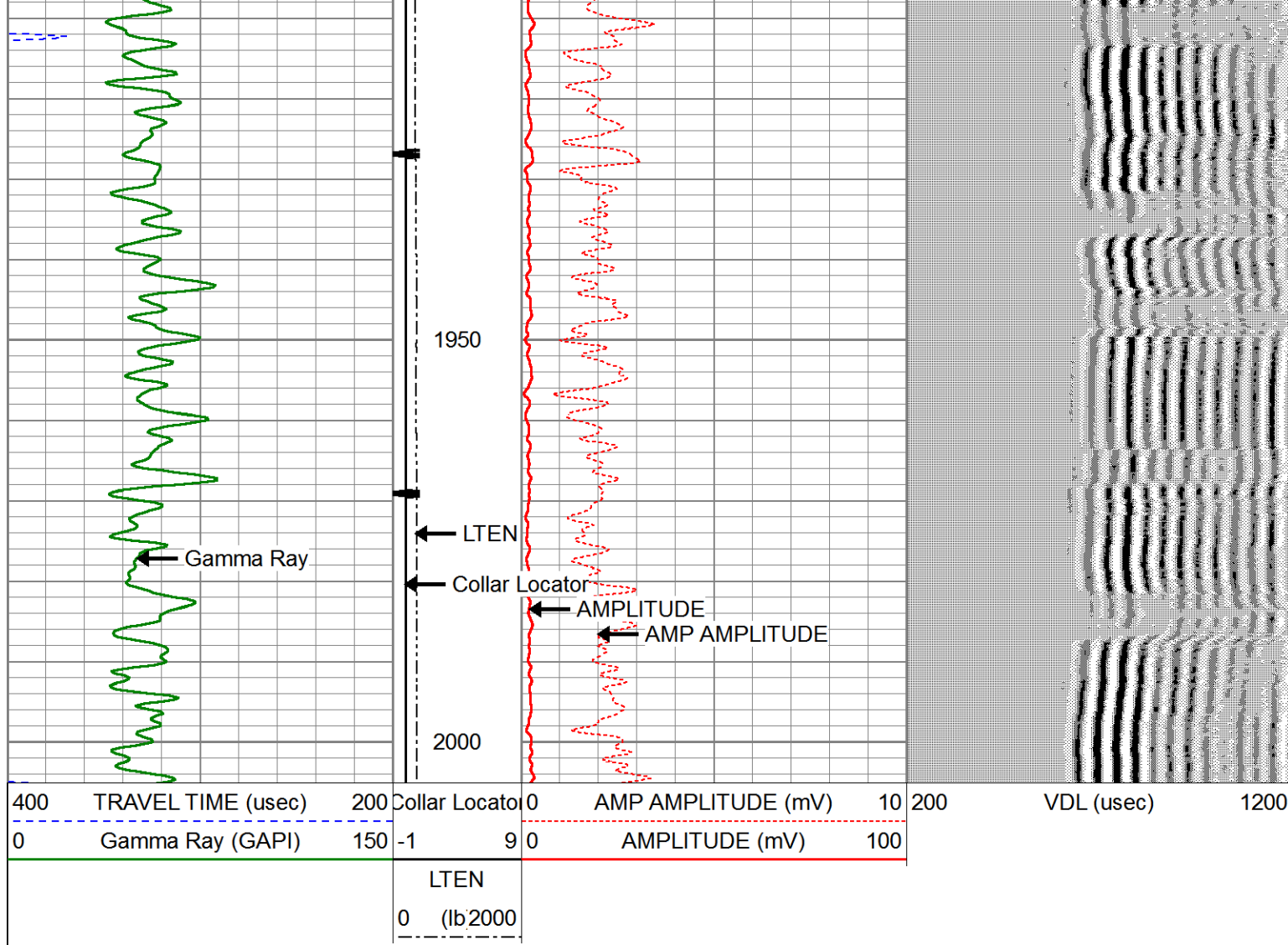












| Calibration Report | | | | | | |
|------------------------------|--------------------------|--------------------------|--------|-----|----------|--|
| Database File | xog_plu_cbl_8-22-19.db | | | | | |
| Dataset Pathname | pass13 | | | | | |
| Dataset Creation | Thu Aug 22 11:27:28 2019 | | | | | |
| Gamma Ray Calibration Report | | | | | | |
| Type / Serial: | | Probe275dig / 080832 | | | | |
| SHOP CALIBRATION | | Thu Sep 18 09:13:22 2008 | | | | |
| | Counts/Sec. | Gain | Offset | Jig | Units | |
| Background | 0.0 | | | | cps | |
| Calibrator | 1.0 | | | | cps | |
| | | 0.6250 | | | GAPI/cps | |
| PRIMARY VERIFICATION | | | | | | |
| Background | 0.0 | | | | cps | |
| Calibrator | 0.0 | | | | cps | |
| Difference | | | | 0.0 | GAPI | |
| BEFORE SURVEY VERIFICATION | | | | | | |
| Background | 0.0 | | | | cps | |
| Calibrator | 0.0 | | | | cps | |
| Difference | | | | 0.0 | GAPI | |
| AFTER SURVEY VERIFICATION | | | | | | |

| | | | |
|------------|-----|-----|------|
| Background | 0.0 | | cps |
| Calibrator | 0.0 | | cps |
| Difference | | 0.0 | GAPI |

Segmented Cement Bond Log Calibration Report

Serial Number: FW1306-47
Tool Model: Probe 2.75 Radii W/Temp

Calibration Casing Diameter: 4.500 in
Calibration Depth: -16.767 ft

Master Calibration, performed Thu Aug 22 10:55:31 2019:


| | Raw (v) | | Calibrated (mv) | | Results | |
|-----|---------|-------|-----------------|---------|---------|--------|
| | Zero | Cal | Zero | Cal | Gain | Offset |
| 3' | 0.004 | 0.671 | 1.000 | 81.196 | 120.064 | 0.578 |
| CAL | 0.004 | 0.780 | | | | |
| 5' | 0.003 | 0.687 | 1.000 | 81.196 | 117.236 | 0.598 |
| SUM | | | | | | |
| S1 | 0.003 | 0.711 | 0.000 | 100.000 | 141.327 | -0.481 |
| S2 | 0.004 | 0.673 | 0.000 | 100.000 | 149.445 | -0.525 |
| S3 | 0.004 | 0.688 | 0.000 | 100.000 | 146.093 | -0.515 |
| S4 | 0.003 | 0.692 | 0.000 | 100.000 | 145.302 | -0.497 |
| S5 | 0.004 | 0.686 | 0.000 | 100.000 | 146.540 | -0.517 |
| S6 | 0.003 | 0.685 | 0.000 | 100.000 | 146.757 | -0.512 |
| S7 | 0.003 | 0.685 | 0.000 | 100.000 | 146.671 | -0.508 |
| S8 | 0.003 | 0.683 | 0.000 | 100.000 | 147.256 | -0.512 |

Internal Reference Calibration, performed (Not Performed):

| | Raw (v) | | Calibrated (v) | | Results | |
|-----|---------|-------|----------------|-------|---------|--------|
| | Zero | Cal | Zero | Cal | Gain | Offset |
| CAL | 0.000 | 0.000 | 0.004 | 0.780 | 1.000 | 0.000 |

Air Zero Calibration, performed Fri Jun 14 06:44:47 2019:

| | Raw (v) | | Calibrated (v) | | Results | |
|-----|---------|--|----------------|--|---------|--|
| | Zero | | Zero | | Offset | |
| 3' | 0.000 | | 0.000 | | 0.000 | |
| 5' | 0.000 | | 0.000 | | 0.000 | |
| SUM | | | | | | |
| S1 | 0.000 | | 0.000 | | 0.000 | |
| S2 | 0.000 | | 0.000 | | 0.000 | |
| S3 | 0.000 | | 0.000 | | 0.000 | |
| S4 | 0.000 | | 0.000 | | 0.000 | |
| S5 | 0.000 | | 0.000 | | 0.000 | |
| S6 | 0.000 | | 0.000 | | 0.000 | |
| S7 | 0.000 | | 0.000 | | 0.000 | |
| S8 | 0.000 | | 0.000 | | 0.000 | |

| Sensor | Offset (ft) | Schematic | Description | Length (ft) | O.D. (in) | Weight (lb) |
|----------|-------------|---|---|-------------|-----------|-------------|
| HeadVolt | 15.73 |  | CHD-Titan Titan 1 7/16" GO Cablehead | 1.00 | 1.44 | 5.00 |

