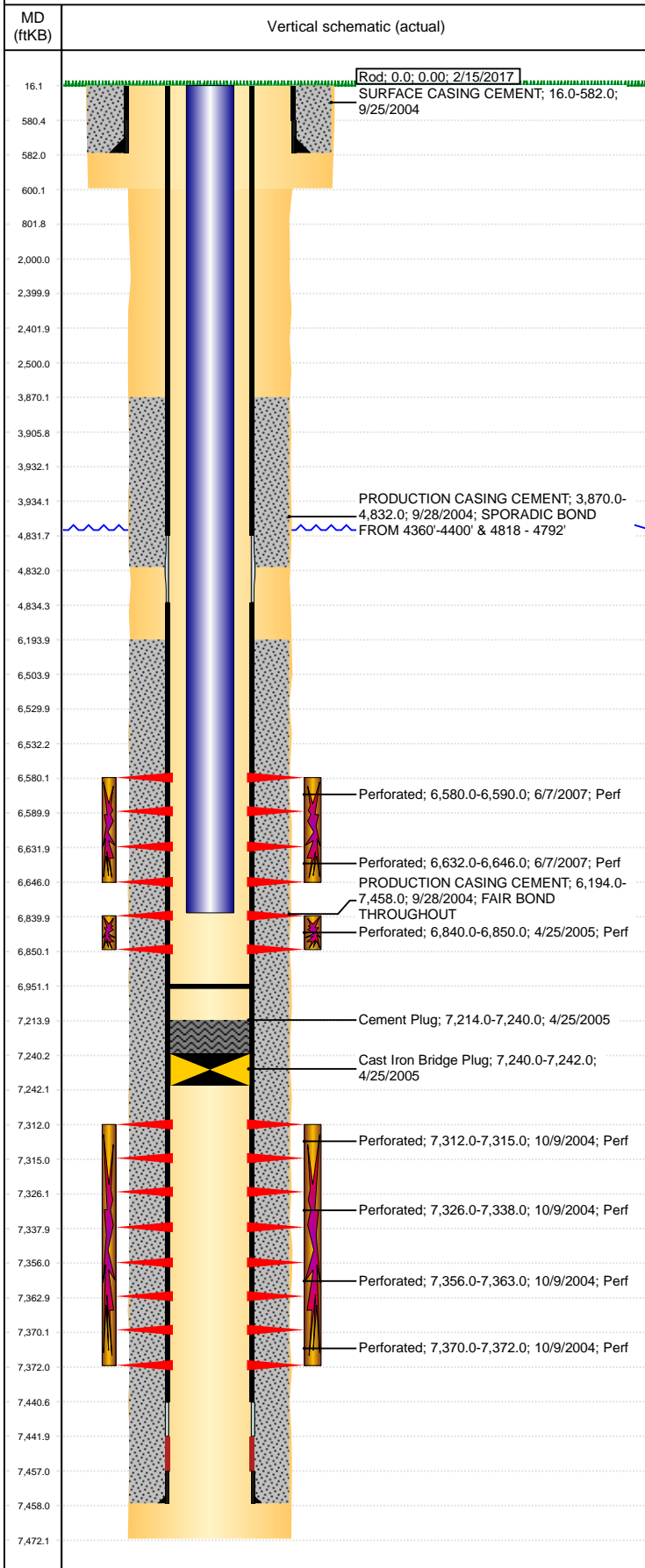


Well Name: KERN D02-02JI

VERTICAL, ORIGINAL HOLE, 10/25/2020 9:16:18 PM



Well Header									
API 05-123-22182		Business Unit DJ BASIN			District 15		Well Config VERTICAL		
KB - GL / MSL (ft... 16.00		Spud Date 9/24/2004		P & A Date		Well Production Status PR			SoRT No
Comment DV tool @ 4824 DISCREP: TD ON ST/CSG TALLY DIFER FROM DRILL RPT; USED 7472 FOR TD (CSG TALLY)									
Surface Location (Congressional)									
Qtr 3 NW	Qtr 4 NE	Section 2	Twnshp 3	Twnsh... N	Range 64	Rng E/... W	Actual Latitude (°) 40.26020217	Actual Longitude (°) -104.51622271	
Wellbore Sections									
Section Des		Size (in)			Act Top, MD (ftKB)		Act Btm, MD (ftKB)		
SURFACE		12 1/4			16		600		
PRODUCTION		7 7/8			600		7,472		
Casing Strings									
Csg Des		Run Date		OD (in)	Wt/Len (lb/ft)	Grade	Top, MD (ftKB)	MD (ftKB)	
Surface Casing		9/25/2004		8 5/8	24.00		16.0	582.0	
Production		9/28/2004		4 1/2	11.60	M-80	16.0	7,458.0	
Cement									
Des				Start Date		Top (ftKB)		Btm (ftKB)	
SURFACE CASING CEMENT				9/25/2004		16.0		582.0	
PRODUCTION CASING CEMENT				9/28/2004		3,870.0		4,832.0	
PRODUCTION CASING CEMENT				9/28/2004		6,194.0		7,458.0	
Cement Plug				4/25/2005		7,214.0		7,240.0	
Zone Statuses									
Zone Name	Status Date	Status	Fluid Type	Job				Prod Method	
NIOBRARA	2/11/2010	PR	Water	RECOMPLETION, 4/22/2005 00:00				Flowing	
NIOBRARA	9/22/2016	SI	Water					Flowing	
CODELL	2/11/2010	PR						Flowing	
CODELL	9/22/2016	SI							
J SAND	5/25/2005	TA							
J SAND	2/7/2008	SI							
Perforation Data									
Linked Zone		Bnch/Stg	Entered Shot Total	Top (ftKB)		Btm (ftKB)		Date	
NIOBRARA, ORIGINAL HOLE			40	6,580.00		6,590.00		6/7/2007	
NIOBRARA, ORIGINAL HOLE			56	6,632.00		6,646.00		6/7/2007	
CODELL, ORIGINAL HOLE			40	6,840.00		6,850.00		4/25/2005	
J SAND, ORIGINAL HOLE			12	7,312.00		7,315.00		10/9/2004	
J SAND, ORIGINAL HOLE			48	7,326.00		7,338.00		10/9/2004	
J SAND, ORIGINAL HOLE			28	7,356.00		7,363.00		10/9/2004	
J SAND, ORIGINAL HOLE			96	7,370.00		7,372.00		10/9/2004	
Stimulation Intervals									
Zone			Start Date		Top (ftKB)		Btm (ftKB)		
NIOBRARA, ORIGINAL HOLE			6/27/2007		6,580.0		6,646.0		
CODELL, ORIGINAL HOLE			5/6/2005		6,840.0		6,850.0		
J SAND, ORIGINAL HOLE			10/18/2004		7,312.0		7,372.0		
Other In Hole									
Run Date		Des		Make		OD (in)	Top (ftKB)	Btm (ftKB)	
4/25/2005		Cast Iron Bridge Plug				4	7,240.0	7,242.0	
Logs									
Date		Type				Top, MD (ftKB)		Btm, MD (ftKB)	
9/28/2004		COMPENSATED DENSITY				4,200.0		7,452.0	
9/28/2004		INDUCTION				582.0		7,452.0	
10/9/2004		CBL/CCL/GR				3,650.0		7,430.0	
5/2/2011		GYRO				10.0		6,800.0	
Plug Back Total Depths									
Date		Type		Com				Depth (ftKB)	
4/25/2005		PLUG		NO TAG - TOP OF DUMP BAIL				7,413.0	
7/6/2007		FILL		CLEAN OUT				6,951.0	