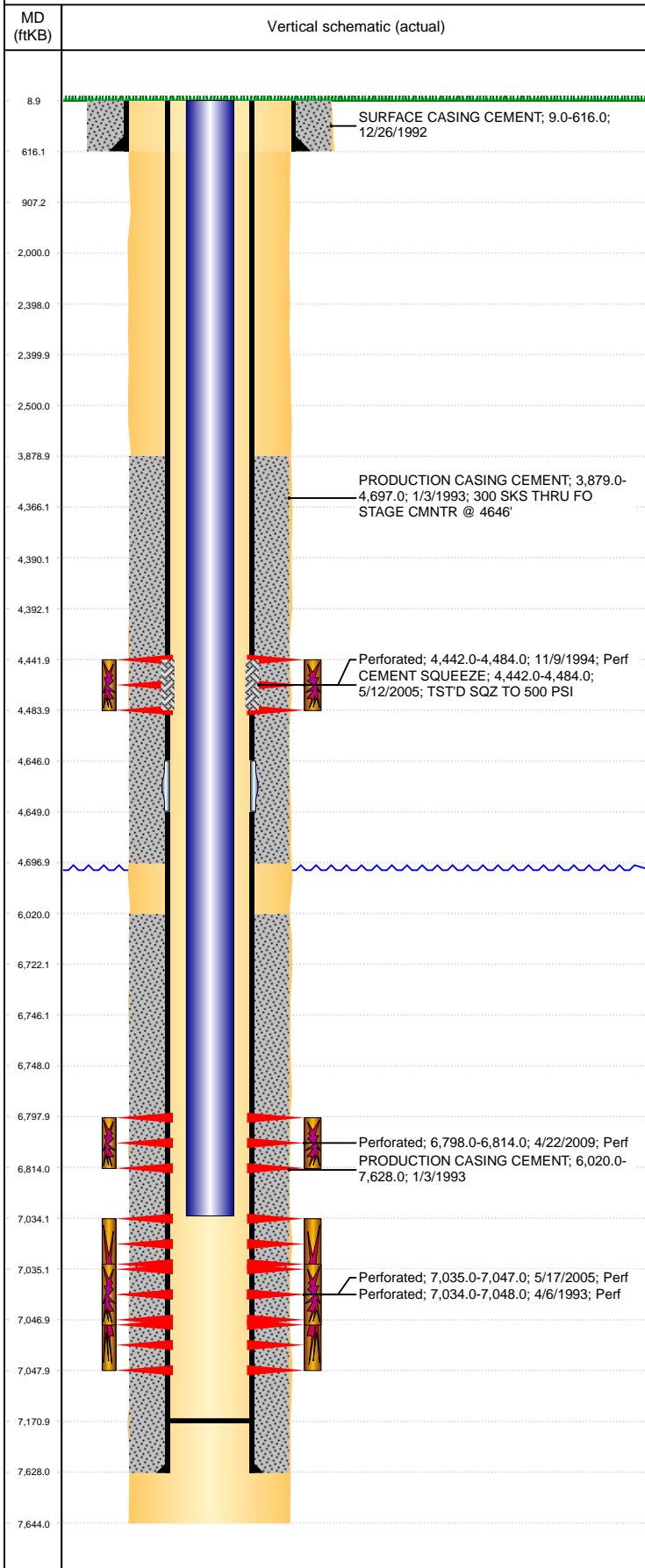


Well Name: CAMOLO RED D27-03J

VERTICAL, ORIGINAL HOLE, 10/25/2020 5:57:26 PM



Well Header									
API 05-123-16625		Business Unit DJ BASIN			District 15		Well Config VERTICAL		
KB - GL / MSL (ft... 9.00		Spud Date 12/23/1992		P & A Date		Well Production Status SI			SoRT No
Comment F/O STAGE CEMENTER @ 4646'									
Surface Location (Congressional)									
Qtr 3 SW	Qtr 4 SW	Section 27	Twnshp 3	Twtnsh... N	Range 64	Rng E/... W	Actual Latitude (°) 40.19187162		Actual Longitude (°) -104.54343077
Wellbore Sections									
Section Des			Size (in)			Act Top, MD (ftKB)		Act Btm, MD (ftKB)	
SURFACE			12 1/4			9		616	
PRODUCTION			7 7/8			616		7,644	
Casing Strings									
Csg Des			Run Date		OD (in)	Wt/Len (lb/ft)	Grade	Top, MD (ftKB)	MD (ftKB)
Surface			12/26/1992		8 5/8	24.00		9.0	616.0
Production			1/12/1993		4 1/2	11.60	M-80	9.0	7,628.0
Cement									
Des					Start Date		Top (ftKB)		Btm (ftKB)
SURFACE CASING CEMENT					12/26/1992		9.0		616.0
PRODUCTION CASING CEMENT					1/3/1993		3,879.0		4,697.0
PRODUCTION CASING CEMENT					1/3/1993		6,020.0		7,628.0
CEMENT SQUEEZE					5/12/2005		4,442.0		4,484.0
Zone Statuses									
Zone Name		Status Date	Status	Fluid Type	Job			Prod Method	
CODELL		6/23/2009	PR	Gas	RECOMPLETION, 4/16/2009 14:00			Flowing	
CODELL		3/15/2010	PR	GAS					
SUSSEX		12/8/1994	PR		RECOMPLETION, 11/7/1994 00:00				
SUSSEX		5/12/2005	AB		RE-FRAC, 5/11/2005 00:00			Flowing	
NIOBRARA		6/23/2009	PR		RECOMPLETION, 4/16/2009 14:00				
NIOBRARA		3/15/2010	PR						
Perforation Data									
Linked Zone			Bnch/Stg	Entered Shot Total	Top (ftKB)		Btm (ftKB)		Date
SUSSEX, ORIGINAL HOLE				15	4,442.00		4,484.00		11/9/1994
NIOBRARA, ORIGINAL HOLE				64	6,798.00		6,814.00		4/22/2009
CODELL, ORIGINAL HOLE				29	7,034.00		7,048.00		4/6/1993
CODELL, ORIGINAL HOLE				48	7,035.00		7,047.00		5/17/2005
Stimulation Intervals									
Zone				Start Date		Top (ftKB)		Btm (ftKB)	
SUSSEX, ORIGINAL HOLE				11/16/1994		4,442.0		4,484.0	
NIOBRARA, ORIGINAL HOLE				5/7/2009		6,798.0		6,814.0	
CODELL, ORIGINAL HOLE				4/6/1993		7,034.0		7,048.0	
CODELL, ORIGINAL HOLE				6/16/2005		7,035.0		7,047.0	
Other In Hole									
Run Date		Des			Make		OD (in)	Top (ftKB)	Btm (ftKB)
Logs									
Date		Type					Top, MD (ftKB)		Btm, MD (ftKB)
1/8/1993		COLLAR LOCATOR					4,400.0		4,900.0
7/15/2008		Cement Bond					3,700.0		7,541.0
7/15/2008		Compensated Density					4,300.0		7,610.0
7/15/2008		Induction					620.0		7,635.0
3/14/2018		GYRO					9.0		6,900.0
Plug Back Total Depths									
Date		Type			Com				Depth (ftKB)
4/22/2009		PLUG							6,834.0
5/15/2009		FILL			124' OF RATHOLE.				7,171.0