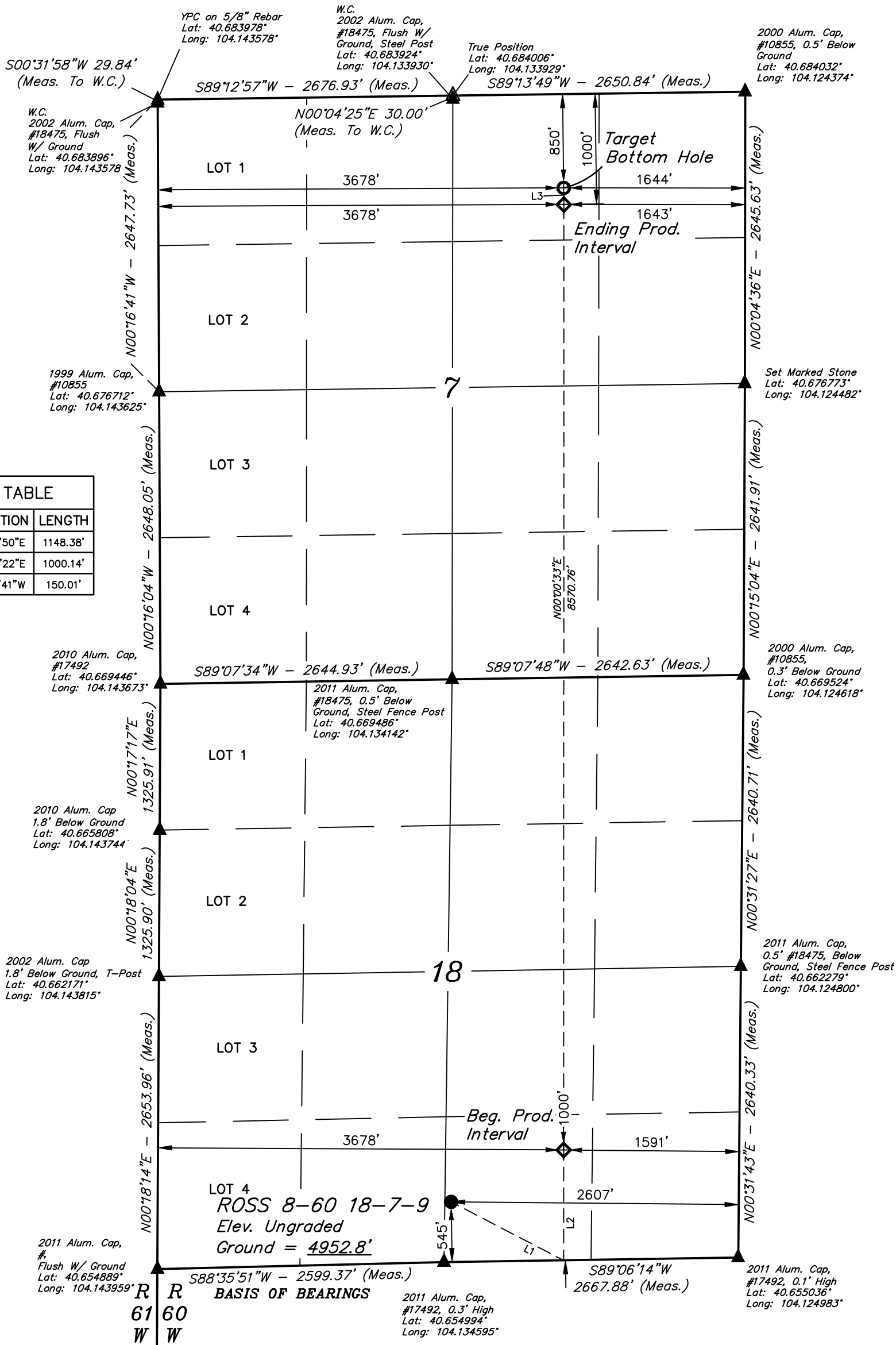


T8N, R60W, 6th P.M.

- NOTE:**
Distances referenced
on plat to section lines
are perpendicular.



LINE TABLE		
LINE	DIRECTION	LENGTH
L1	S62°33'50"E	1148.38'
L2	N00°03'22"E	1000.14'
L3	N00°16'41"W	150.01'

SURFACE LOCATION
545' FSL 2607' FEL
NAD 83 (SURFACE LOCATION)
LATITUDE = 40°39'23.37" (40.656490°)
LONGITUDE = 104°08'03.63" (104.134341°)
NAD 27 (SURFACE LOCATION)
LATITUDE = 40°39'23.42" (40.656505°)
LONGITUDE = 104°08'01.81" (104.133837°)
STATE PLANE NAD 83 (CO. NORTH)
N: 1484919.69' E: 3378896.10'
STATE PLANE NAD 27 (CO. NORTH)
N: 1484918.67' E: 2379046.08'

BEG. PROD. INTERVAL
1000' FSL 3678' FWL 1591' FEL
NAD 83 (BEG. PROD. INTERVAL)
LATITUDE = 40°39'27.92" (40.657755°)
LONGITUDE = 104°07'50.34" (104.130649°)
NAD 27 (BEG. PROD. INTERVAL)
LATITUDE = 40°39'27.97" (40.657770°)
LONGITUDE = 104°07'48.52" (104.130144°)
STATE PLANE NAD 83 (CO. NORTH)
N: 1485396.21' E: 3379913.34'
STATE PLANE NAD 27 (CO. NORTH)
N: 485395.17' E: 2380063.35'

ENDING PROD. INTERVAL 1000' FNL 3678' FWL 1643' FEL
NAD 83 (ENDING PROD. INTERVAL) LATITUDE = 40°40'52.58" (40.681272°) LONGITUDE = 104°07'49.22" (104.130338°)
NAD 27 (ENDING PROD. INTERVAL) LATITUDE = 40°40'52.63" (40.681286°) LONGITUDE = 104°07'47.40" (104.129834°)
STATE PLANE NAD 83 (CO. NORTH) N: 1493964.16' E: 3379867.11'
STATE PLANE NAD 27 (CO. NORTH) N: 493962.97' E: 2380017.00'

TARGET BOTTOM HOLE
850' FNL 3678' FWL 1644' FEL
NAD 83 (TARGET BOTTOM HOLE)
LATITUDE = 40°40'54.06" (40.681683°)
LONGITUDE = 104°07'49.21" (104.130336°)
NAD 27 (TARGET BOTTOM HOLE)
LATITUDE = 40°40'54.11" (40.681698°)
LONGITUDE = 104°07'47.39" (104.129831°)
STATE PLANE NAD 83 (CO. NORTH)
N: 1494114.12' E: 3379865.55'
STATE PLANE NAD 27 (CO. NORTH)
N: 494112.92' E: 2380015.44'

PDOP = 2.0



CERTIFICATE
THE ABOVE DEED WAS PREPARED FROM FILED
RECORDS MADE BY ME OR UNDER MY SUPERVISION
TRUE AND CORRECT TO THE BEST OF MY
KNOWLEDGE

REGISTERED LAND SURVEYOR
REGISTRATION NO. 28285
STATE OF COLORADO
08-26-20



REV: 1 08-25-20 C.IVIE (BPI & EPI MOVE)

BASIS OF ELEVATION
OPUS SOLUTION GENERATED NAVD 88



UELS, LLC
Corporate Office * 85 South 200 East
Vernal, UT 84078 * (435) 789-1017

BISON OIL & GAS II

ROSS 8-60 18-7-9
SW 1/4 SE 1/4, SECTION 18, T8N, R60W, 6th P.M.
WELD COUNTY, COLORADO

SURVEYED BY	CHAD MEIERS, O.R.	02-25-20	SCALE
DRAWN BY	C.IVIE	05-07-20	1" = 1000'

WELL LOCATION PLAT