

# **Bison Oil & Gas II, LLC**

**WELD COUNTY, COLORADO (NAD 83)**

**ROSS 8-60 18 SESW & SWSE SEC 18 T8N R60W 6th P.M.**

**ROSS 8-60 18-7-9**

**Wellbore #1**

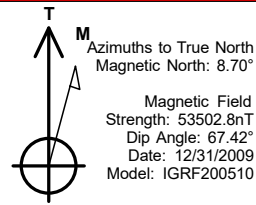
**Plan: Design #1**

## **Standard Survey Report**

**03 September, 2020**



Project: WELD COUNTY, COLORADO (NAD 83)  
Site: ROSS 8-60 18 SESW & SWSE SEC 18 T8N R60W 6th P.M.  
Well: ROSS 8-60 18-7-9  
Wellbore: Wellbore #1  
Design: Design #1



#### ANNOTATIONS

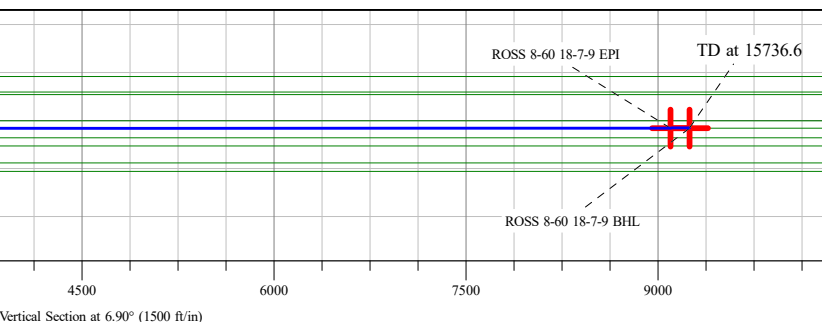
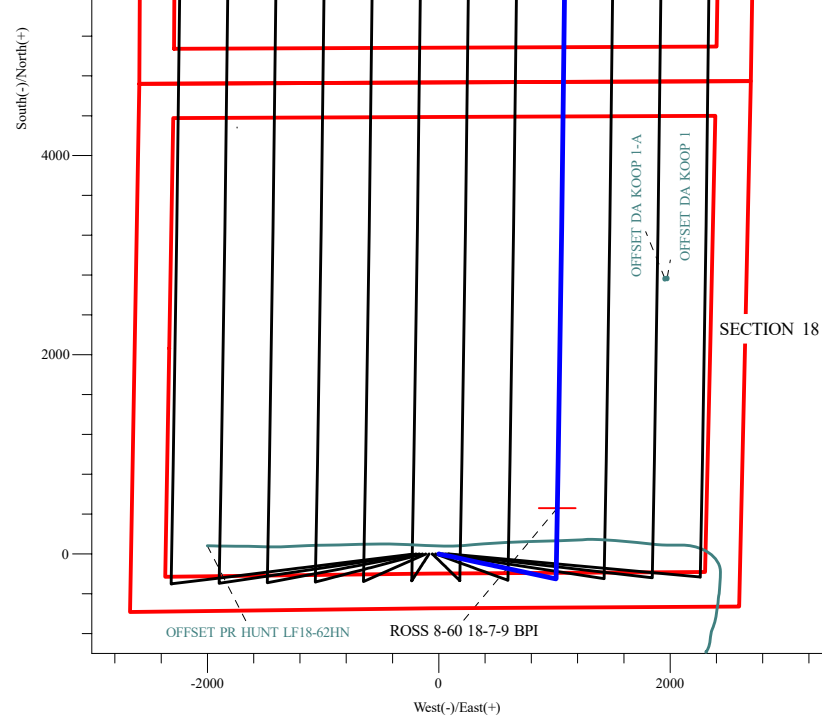
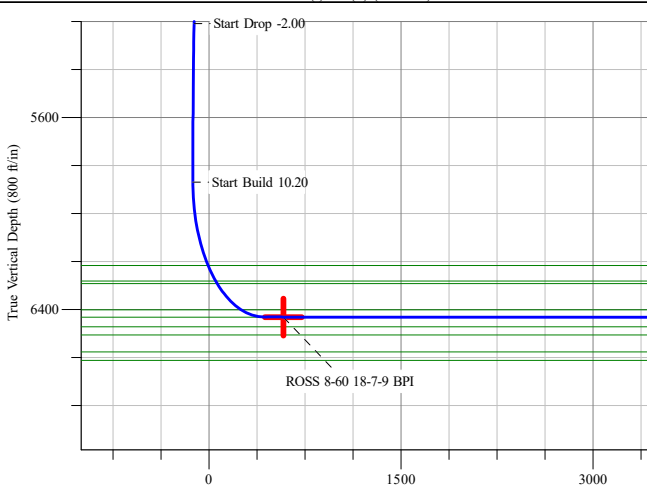
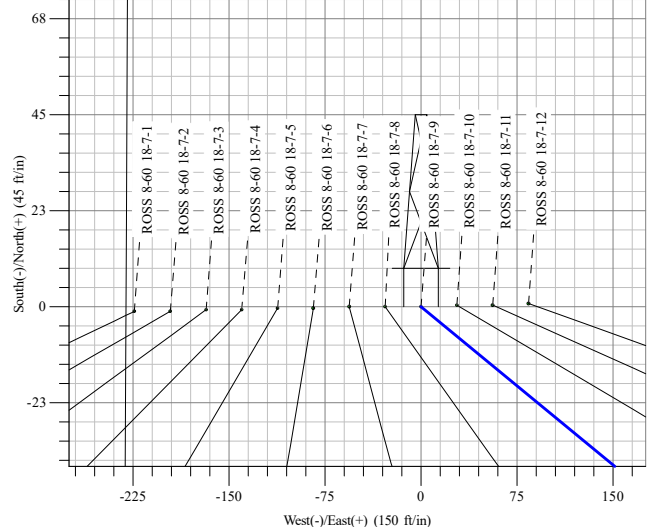
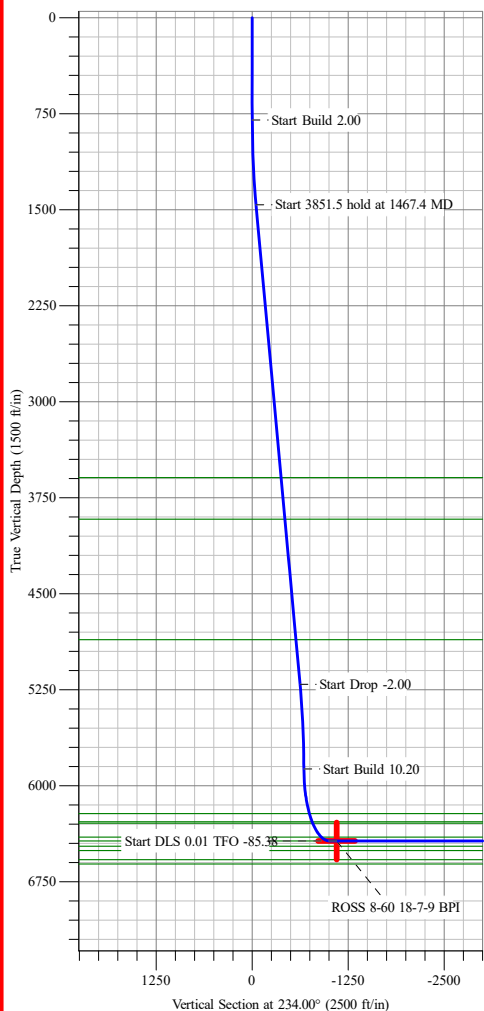
MD	Inc	Azi	TVD	+N/-S	+E/-W	VSec	Departure	Annotation
800.0	0.00	0.00	800.0	0.0	0.0	0.0	0.0	Start Build 2.00
1467.4	13.35	103.89	1461.4	-18.6	75.1	-9.4	77.4	Start 3851.5 hold at 1467.4 MD
5319.0	13.35	103.89	5208.9	-232.1	938.4	-117.6	966.6	Start Drop -2.00
5986.4	0.00	0.00	5870.3	-250.6	1013.5	-127.0	1044.0	Start Build 10.20
6868.7	90.00	0.87	6432.0	311.0	1022.1	431.5	1605.7	Start DLS 0.02 TFO -180.00
7018.6	89.98	0.87	6432.0	460.9	1024.4	580.6	1755.6	Start DLS 0.01 TFO -85.38
15586.9	90.02	0.27	6432.0	9028.7	1110.3	9096.7	10323.9	Start 149.7 hold at 15586.9 MD
15736.6	90.02	0.27	6431.9	9178.4	1111.0	9245.4	10473.6	TD at 15736.6

#### PROPOSED LOCAL COORDINATES:

SHL: 545 ft FSL & 2607 ft FEL Sec 18  
BPI: 1000 ft FSL & 1591 ft FEL Sec 18  
EPI: 1000 ft FNL & 1643 ft FEL Sec 7  
BHL: 850 ft FNL & 1644 ft FEL Sec 7

#### WELLBORE TARGET DETAILS (LAT/LONG)

Name	TVD	+N/-S	+E/-W	Northing	Easting	Latitude	Longitude
ROSS 8-60 18-7-9 BPI	6432.0	460.9	1024.4	452749.65	1030199.62	40° 39' 27.918 N 104° 7' 50.336 W	
ROSS 8-60 18-7-9 EPI	6432.0	9028.7	1110.3	455361.21	1030185.58	40° 40' 52.579 N 104° 7' 49.217 W	
ROSS 8-60 18-7-9 BHL	6432.0	9178.4	1110.8	455406.84	1030185.05	40° 40' 54.059 N 104° 7' 49.210 W	Point



## Survey Report

<b>Company:</b>	Bison Oil & Gas II, LLC	<b>Local Co-ordinate Reference:</b>	Well ROSS 8-60 18-7-9
<b>Project:</b>	WELD COUNTY, COLORADO (NAD 83)	<b>TVD Reference:</b>	WELL @ 4953.0ft (Original Well Elev)
<b>Site:</b>	ROSS 8-60 18 SESW & SWSE SEC 18 T8N R60W 6th P.M.	<b>MD Reference:</b>	WELL @ 4953.0ft (Original Well Elev)
<b>Well:</b>	ROSS 8-60 18-7-9	<b>North Reference:</b>	True
<b>Wellbore:</b>	Wellbore #1	<b>Survey Calculation Method:</b>	Minimum Curvature
<b>Design:</b>	Design #1	<b>Database:</b>	EDM 5000.16 Single User Db

<b>Project</b>	WELD COUNTY, COLORADO (NAD 83),		
<b>Map System:</b>	US State Plane 1983	<b>System Datum:</b>	Mean Sea Level
<b>Geo Datum:</b>	North American Datum 1983		
<b>Map Zone:</b>	Colorado Northern Zone		

Site	ROSS 8-60 18 SESW & SWSE SEC 18 T8N R60W 6th P.M.				
Site Position:		Northing:	452,604.25 m	Latitude:	40° 39' 23.364 N
From:	Lat/Long	Easting:	1,029,881.06 m	Longitude:	104° 8' 3.991 W
Position Uncertainty:	0.0 ft	Slot Radius:	13.200 in		

Well	ROSS 8-60 18-7-9					
Well Position	+N/-S	0.0 ft	Northing:	452,604.38 m	Latitude:	40° 39' 23.364 N
	+E/-W	0.0 ft	Easting:	1,029,889.60 m	Longitude:	104° 8' 3.628 W
Position Uncertainty		0.0 ft	Wellhead Elevation:	ft	Ground Level:	4,952.8 ft
Grid Convergence:		0.88 °				

<b>Wellbore</b>	Wellbore #1
-----------------	-------------

Magnetics	Model Name	Sample Date	Declination (°)	Dip Angle (°)	Field Strength (nT)
	IGRF200510	12/31/2009	8.70	67.42	53,502.83817859

Planned Survey									
Measured Depth (ft)	Inclination (°)	Azimuth (°)	Vertical Depth (ft)	+N/-S (ft)	+E/-W (ft)	Vertical Section (ft)	Dogleg Rate (°/100ft)	Build Rate (°/100ft)	Turn Rate (°/100ft)
0.0	0.00	0.00	0.0	0.0	0.0	0.0	0.00	0.00	0.00
100.0	0.00	0.00	100.0	0.0	0.0	0.0	0.00	0.00	0.00
200.0	0.00	0.00	200.0	0.0	0.0	0.0	0.00	0.00	0.00
300.0	0.00	0.00	300.0	0.0	0.0	0.0	0.00	0.00	0.00
400.0	0.00	0.00	400.0	0.0	0.0	0.0	0.00	0.00	0.00
500.0	0.00	0.00	500.0	0.0	0.0	0.0	0.00	0.00	0.00
600.0	0.00	0.00	600.0	0.0	0.0	0.0	0.00	0.00	0.00
700.0	0.00	0.00	700.0	0.0	0.0	0.0	0.00	0.00	0.00
800.0	0.00	0.00	800.0	0.0	0.0	0.0	0.00	0.00	0.00
<b>Start Build 2.00</b>									
900.0	2.00	103.89	900.0	-0.4	1.7	-0.2	2.00	2.00	0.00
1,000.0	4.00	103.89	999.8	-1.7	6.8	-0.8	2.00	2.00	0.00
1,100.0	6.00	103.89	1,099.5	-3.8	15.2	-1.9	2.00	2.00	0.00
1,200.0	8.00	103.89	1,198.7	-6.7	27.1	-3.4	2.00	2.00	0.00
1,300.0	10.00	103.89	1,297.5	-10.4	42.2	-5.3	2.00	2.00	0.00
1,400.0	12.00	103.89	1,395.6	-15.0	60.8	-7.6	2.00	2.00	0.00
1,467.4	13.35	103.89	1,461.4	-18.6	75.1	-9.4	2.00	2.00	0.00
<b>Start 3851.5 hold at 1467.4 MD</b>									
1,500.0	13.35	103.89	1,493.1	-20.4	82.4	-10.3	0.00	0.00	0.00
1,600.0	13.35	103.89	1,590.4	-25.9	104.8	-13.1	0.00	0.00	0.00
1,700.0	13.35	103.89	1,687.7	-31.5	127.3	-16.0	0.00	0.00	0.00
1,800.0	13.35	103.89	1,785.0	-37.0	149.7	-18.8	0.00	0.00	0.00

## Survey Report

<b>Company:</b>	Bison Oil & Gas II, LLC	<b>Local Co-ordinate Reference:</b>	Well ROSS 8-60 18-7-9
<b>Project:</b>	WELD COUNTY, COLORADO (NAD 83)	<b>TVD Reference:</b>	WELL @ 4953.0ft (Original Well Elev)
<b>Site:</b>	ROSS 8-60 18 SESW & SWSE SEC 18 T8N R60W 6th P.M.	<b>MD Reference:</b>	WELL @ 4953.0ft (Original Well Elev)
<b>Well:</b>	ROSS 8-60 18-7-9	<b>North Reference:</b>	True
<b>Wellbore:</b>	Wellbore #1	<b>Survey Calculation Method:</b>	Minimum Curvature
<b>Design:</b>	Design #1	<b>Database:</b>	EDM 5000.16 Single User Db

### Planned Survey

Measured Depth (ft)	Inclination (°)	Azimuth (°)	Vertical Depth (ft)	+N/-S (ft)	+E/-W (ft)	Vertical Section (ft)	Dogleg Rate (°/100ft)	Build Rate (°/100ft)	Turn Rate (°/100ft)
1,900.0	13.35	103.89	1,882.3	-42.6	172.1	-21.6	0.00	0.00	0.00
2,000.0	13.35	103.89	1,979.6	-48.1	194.5	-24.4	0.00	0.00	0.00
2,100.0	13.35	103.89	2,076.9	-53.6	216.9	-27.2	0.00	0.00	0.00
2,200.0	13.35	103.89	2,174.2	-59.2	239.3	-30.0	0.00	0.00	0.00
2,300.0	13.35	103.89	2,271.5	-64.7	261.7	-32.8	0.00	0.00	0.00
2,400.0	13.35	103.89	2,368.8	-70.3	284.1	-35.6	0.00	0.00	0.00
2,500.0	13.35	103.89	2,466.1	-75.8	306.6	-38.4	0.00	0.00	0.00
2,600.0	13.35	103.89	2,563.4	-81.4	329.0	-41.2	0.00	0.00	0.00
2,700.0	13.35	103.89	2,660.7	-86.9	351.4	-44.0	0.00	0.00	0.00
2,800.0	13.35	103.89	2,758.0	-92.4	373.8	-46.9	0.00	0.00	0.00
2,900.0	13.35	103.89	2,855.3	-98.0	396.2	-49.7	0.00	0.00	0.00
3,000.0	13.35	103.89	2,952.6	-103.5	418.6	-52.5	0.00	0.00	0.00
3,100.0	13.35	103.89	3,049.9	-109.1	441.0	-55.3	0.00	0.00	0.00
3,200.0	13.35	103.89	3,147.2	-114.6	463.4	-58.1	0.00	0.00	0.00
3,300.0	13.35	103.89	3,244.5	-120.2	485.9	-60.9	0.00	0.00	0.00
3,400.0	13.35	103.89	3,341.8	-125.7	508.3	-63.7	0.00	0.00	0.00
3,500.0	13.35	103.89	3,439.1	-131.2	530.7	-66.5	0.00	0.00	0.00
3,600.0	13.35	103.89	3,536.4	-136.8	553.1	-69.3	0.00	0.00	0.00
3,700.0	13.35	103.89	3,633.7	-142.3	575.5	-72.1	0.00	0.00	0.00
3,800.0	13.35	103.89	3,731.0	-147.9	597.9	-74.9	0.00	0.00	0.00
3,900.0	13.35	103.89	3,828.3	-153.4	620.3	-77.8	0.00	0.00	0.00
4,000.0	13.35	103.89	3,925.6	-159.0	642.7	-80.6	0.00	0.00	0.00
4,100.0	13.35	103.89	4,022.9	-164.5	665.2	-83.4	0.00	0.00	0.00
4,200.0	13.35	103.89	4,120.2	-170.0	687.6	-86.2	0.00	0.00	0.00
4,300.0	13.35	103.89	4,217.5	-175.6	710.0	-89.0	0.00	0.00	0.00
4,400.0	13.35	103.89	4,314.8	-181.1	732.4	-91.8	0.00	0.00	0.00
4,500.0	13.35	103.89	4,412.0	-186.7	754.8	-94.6	0.00	0.00	0.00
4,600.0	13.35	103.89	4,509.3	-192.2	777.2	-97.4	0.00	0.00	0.00
4,700.0	13.35	103.89	4,606.6	-197.7	799.6	-100.2	0.00	0.00	0.00
4,800.0	13.35	103.89	4,703.9	-203.3	822.0	-103.0	0.00	0.00	0.00
4,900.0	13.35	103.89	4,801.2	-208.8	844.5	-105.8	0.00	0.00	0.00
5,000.0	13.35	103.89	4,898.5	-214.4	866.9	-108.7	0.00	0.00	0.00
5,100.0	13.35	103.89	4,995.8	-219.9	889.3	-111.5	0.00	0.00	0.00
5,200.0	13.35	103.89	5,093.1	-225.5	911.7	-114.3	0.00	0.00	0.00
5,300.0	13.35	103.89	5,190.4	-231.0	934.1	-117.1	0.00	0.00	0.00
5,319.0	13.35	103.89	5,208.9	-232.1	938.4	-117.6	0.00	0.00	0.00
<b>Start Drop -2.00</b>									
5,400.0	11.73	103.89	5,288.0	-236.3	955.4	-119.8	2.00	-2.00	0.00
5,500.0	9.73	103.89	5,386.2	-240.7	973.5	-122.0	2.00	-2.00	0.00
5,600.0	7.73	103.89	5,485.1	-244.4	988.2	-123.9	2.00	-2.00	0.00
5,700.0	5.73	103.89	5,584.4	-247.2	999.6	-125.3	2.00	-2.00	0.00
5,800.0	3.73	103.89	5,684.0	-249.2	1,007.6	-126.3	2.00	-2.00	0.00
5,900.0	1.73	103.89	5,783.9	-250.3	1,012.2	-126.9	2.00	-2.00	0.00

## Survey Report

<b>Company:</b>	Bison Oil & Gas II, LLC	<b>Local Co-ordinate Reference:</b>	Well ROSS 8-60 18-7-9
<b>Project:</b>	WELD COUNTY, COLORADO (NAD 83)	<b>TVD Reference:</b>	WELL @ 4953.0ft (Original Well Elev)
<b>Site:</b>	ROSS 8-60 18 SESW & SWSE SEC 18 T8N R60W 6th P.M.	<b>MD Reference:</b>	WELL @ 4953.0ft (Original Well Elev)
<b>Well:</b>	ROSS 8-60 18-7-9	<b>North Reference:</b>	True
<b>Wellbore:</b>	Wellbore #1	<b>Survey Calculation Method:</b>	Minimum Curvature
<b>Design:</b>	Design #1	<b>Database:</b>	EDM 5000.16 Single User Db

### Planned Survey

Measured Depth (ft)	Inclination (°)	Azimuth (°)	Vertical Depth (ft)	+N/-S (ft)	+E/-W (ft)	Vertical Section (ft)	Dogleg Rate (°/100ft)	Build Rate (°/100ft)	Turn Rate (°/100ft)
5,986.4	0.00	0.00	5,870.3	-250.6	1,013.5	-127.0	2.00	-2.00	0.00
<b>Start Build 10.20</b>									
6,000.0	1.39	0.87	5,883.9	-250.5	1,013.5	-126.9	10.20	10.20	0.00
6,100.0	11.59	0.87	5,983.1	-239.2	1,013.7	-115.7	10.20	10.20	0.00
6,200.0	21.79	0.87	6,078.8	-210.5	1,014.1	-87.1	10.20	10.20	0.00
6,300.0	31.99	0.87	6,167.9	-165.4	1,014.8	-42.2	10.20	10.20	0.00
6,400.0	42.19	0.87	6,247.5	-105.1	1,015.7	17.7	10.20	10.20	0.00
6,500.0	52.39	0.87	6,315.3	-31.8	1,016.8	90.7	10.20	10.20	0.00
6,600.0	62.59	0.87	6,368.9	52.5	1,018.1	174.4	10.20	10.20	0.00
6,700.0	72.79	0.87	6,406.8	144.8	1,019.5	266.3	10.20	10.20	0.00
6,800.0	83.00	0.87	6,427.8	242.5	1,021.0	363.4	10.20	10.20	0.00
6,868.7	90.00	0.87	6,432.0	311.0	1,022.1	431.5	10.20	10.20	0.00
<b>Start DLS 0.02 TFO -180.00</b>									
6,900.0	89.99	0.87	6,432.0	342.3	1,022.5	462.7	0.02	-0.02	0.00
7,000.0	89.98	0.87	6,432.0	442.3	1,024.1	562.1	0.02	-0.02	0.00
7,018.6	89.98	0.87	6,432.0	460.9	1,024.4	580.6	0.02	-0.02	0.00
<b>Start DLS 0.01 TFO -85.38 - ROSS 8-60 18-7-9 BPI</b>									
7,100.0	89.98	0.87	6,432.0	542.3	1,025.6	661.6	0.01	0.00	-0.01
7,200.0	89.98	0.86	6,432.1	642.3	1,027.1	761.0	0.01	0.00	-0.01
7,300.0	89.98	0.86	6,432.1	742.3	1,028.6	860.5	0.01	0.00	-0.01
7,400.0	89.98	0.85	6,432.2	842.2	1,030.1	959.9	0.01	0.00	-0.01
7,500.0	89.98	0.84	6,432.2	942.2	1,031.6	1,059.4	0.01	0.00	-0.01
7,600.0	89.98	0.83	6,432.2	1,042.2	1,033.0	1,158.8	0.01	0.00	-0.01
7,700.0	89.98	0.83	6,432.3	1,142.2	1,034.5	1,258.2	0.01	0.00	-0.01
7,800.0	89.98	0.82	6,432.3	1,242.2	1,035.9	1,357.7	0.01	0.00	-0.01
7,900.0	89.98	0.81	6,432.3	1,342.2	1,037.3	1,457.1	0.01	0.00	-0.01
8,000.0	89.98	0.81	6,432.4	1,442.2	1,038.7	1,556.5	0.01	0.00	-0.01
8,100.0	89.98	0.80	6,432.4	1,542.2	1,040.1	1,656.0	0.01	0.00	-0.01
8,200.0	89.98	0.79	6,432.4	1,642.2	1,041.5	1,755.4	0.01	0.00	-0.01
8,300.0	89.98	0.79	6,432.5	1,742.1	1,042.9	1,854.8	0.01	0.00	-0.01
8,400.0	89.98	0.78	6,432.5	1,842.1	1,044.3	1,954.3	0.01	0.00	-0.01
8,500.0	89.98	0.77	6,432.5	1,942.1	1,045.6	2,053.7	0.01	0.00	-0.01
8,600.0	89.98	0.76	6,432.5	2,042.1	1,047.0	2,153.1	0.01	0.00	-0.01
8,700.0	89.99	0.76	6,432.6	2,142.1	1,048.3	2,252.6	0.01	0.00	-0.01
8,800.0	89.99	0.75	6,432.6	2,242.1	1,049.6	2,352.0	0.01	0.00	-0.01
8,900.0	89.99	0.74	6,432.6	2,342.1	1,050.9	2,451.4	0.01	0.00	-0.01
9,000.0	89.99	0.74	6,432.6	2,442.1	1,052.2	2,550.8	0.01	0.00	-0.01
9,100.0	89.99	0.73	6,432.7	2,542.1	1,053.5	2,650.2	0.01	0.00	-0.01
9,200.0	89.99	0.72	6,432.7	2,642.1	1,054.7	2,749.7	0.01	0.00	-0.01
9,300.0	89.99	0.71	6,432.7	2,742.1	1,056.0	2,849.1	0.01	0.00	-0.01
9,400.0	89.99	0.71	6,432.7	2,842.1	1,057.2	2,948.5	0.01	0.00	-0.01
9,500.0	89.99	0.70	6,432.7	2,942.0	1,058.5	3,047.9	0.01	0.00	-0.01
9,600.0	89.99	0.69	6,432.8	3,042.0	1,059.7	3,147.3	0.01	0.00	-0.01

## Survey Report

<b>Company:</b>	Bison Oil & Gas II, LLC	<b>Local Co-ordinate Reference:</b>	Well ROSS 8-60 18-7-9
<b>Project:</b>	WELD COUNTY, COLORADO (NAD 83)	<b>TVD Reference:</b>	WELL @ 4953.0ft (Original Well Elev)
<b>Site:</b>	ROSS 8-60 18 SESW & SWSE SEC 18 T8N R60W 6th P.M.	<b>MD Reference:</b>	WELL @ 4953.0ft (Original Well Elev)
<b>Well:</b>	ROSS 8-60 18-7-9	<b>North Reference:</b>	True
<b>Wellbore:</b>	Wellbore #1	<b>Survey Calculation Method:</b>	Minimum Curvature
<b>Design:</b>	Design #1	<b>Database:</b>	EDM 5000.16 Single User Db

Planned Survey									
Measured Depth (ft)	Inclination (°)	Azimuth (°)	Vertical Depth (ft)	+N/-S (ft)	+E/-W (ft)	Vertical Section (ft)	Dogleg Rate (°/100ft)	Build Rate (°/100ft)	Turn Rate (°/100ft)
9,700.0	89.99	0.69	6,432.8	3,142.0	1,060.9	3,246.7	0.01	0.00	-0.01
9,800.0	89.99	0.68	6,432.8	3,242.0	1,062.1	3,346.2	0.01	0.00	-0.01
9,900.0	89.99	0.67	6,432.8	3,342.0	1,063.3	3,445.6	0.01	0.00	-0.01
10,000.0	89.99	0.67	6,432.8	3,442.0	1,064.4	3,545.0	0.01	0.00	-0.01
10,100.0	89.99	0.66	6,432.8	3,542.0	1,065.6	3,644.4	0.01	0.00	-0.01
10,200.0	89.99	0.65	6,432.8	3,642.0	1,066.7	3,743.8	0.01	0.00	-0.01
10,300.0	89.99	0.64	6,432.9	3,742.0	1,067.9	3,843.2	0.01	0.00	-0.01
10,400.0	89.99	0.64	6,432.9	3,842.0	1,069.0	3,942.6	0.01	0.00	-0.01
10,500.0	90.00	0.63	6,432.9	3,942.0	1,070.1	4,042.0	0.01	0.00	-0.01
10,600.0	90.00	0.62	6,432.9	4,042.0	1,071.2	4,141.4	0.01	0.00	-0.01
10,700.0	90.00	0.62	6,432.9	4,142.0	1,072.3	4,240.8	0.01	0.00	-0.01
10,800.0	90.00	0.61	6,432.9	4,242.0	1,073.3	4,340.2	0.01	0.00	-0.01
10,900.0	90.00	0.60	6,432.9	4,342.0	1,074.4	4,439.6	0.01	0.00	-0.01
11,000.0	90.00	0.60	6,432.9	4,442.0	1,075.4	4,539.0	0.01	0.00	-0.01
11,100.0	90.00	0.59	6,432.9	4,541.9	1,076.5	4,638.4	0.01	0.00	-0.01
11,200.0	90.00	0.58	6,432.9	4,641.9	1,077.5	4,737.8	0.01	0.00	-0.01
11,300.0	90.00	0.57	6,432.9	4,741.9	1,078.5	4,837.2	0.01	0.00	-0.01
11,400.0	90.00	0.57	6,432.9	4,841.9	1,079.5	4,936.6	0.01	0.00	-0.01
11,500.0	90.00	0.56	6,432.9	4,941.9	1,080.5	5,036.0	0.01	0.00	-0.01
11,600.0	90.00	0.55	6,432.9	5,041.9	1,081.5	5,135.3	0.01	0.00	-0.01
11,700.0	90.00	0.55	6,432.9	5,141.9	1,082.4	5,234.7	0.01	0.00	-0.01
11,800.0	90.00	0.54	6,432.9	5,241.9	1,083.4	5,334.1	0.01	0.00	-0.01
11,900.0	90.00	0.53	6,432.9	5,341.9	1,084.3	5,433.5	0.01	0.00	-0.01
12,000.0	90.00	0.53	6,432.9	5,441.9	1,085.2	5,532.9	0.01	0.00	-0.01
12,100.0	90.00	0.52	6,432.9	5,541.9	1,086.1	5,632.3	0.01	0.00	-0.01
12,200.0	90.01	0.51	6,432.9	5,641.9	1,087.0	5,731.6	0.01	0.00	-0.01
12,300.0	90.01	0.50	6,432.9	5,741.9	1,087.9	5,831.0	0.01	0.00	-0.01
12,400.0	90.01	0.50	6,432.8	5,841.9	1,088.8	5,930.4	0.01	0.00	-0.01
12,500.0	90.01	0.49	6,432.8	5,941.9	1,089.7	6,029.8	0.01	0.00	-0.01
12,600.0	90.01	0.48	6,432.8	6,041.9	1,090.5	6,129.1	0.01	0.00	-0.01
12,700.0	90.01	0.48	6,432.8	6,141.9	1,091.4	6,228.5	0.01	0.00	-0.01
12,800.0	90.01	0.47	6,432.8	6,241.9	1,092.2	6,327.9	0.01	0.00	-0.01
12,900.0	90.01	0.46	6,432.8	6,341.9	1,093.0	6,427.3	0.01	0.00	-0.01
13,000.0	90.01	0.46	6,432.8	6,441.9	1,093.8	6,526.6	0.01	0.00	-0.01
13,100.0	90.01	0.45	6,432.7	6,541.9	1,094.6	6,626.0	0.01	0.00	-0.01
13,200.0	90.01	0.44	6,432.7	6,641.9	1,095.4	6,725.4	0.01	0.00	-0.01
13,300.0	90.01	0.43	6,432.7	6,741.9	1,096.1	6,824.7	0.01	0.00	-0.01
13,400.0	90.01	0.43	6,432.7	6,841.9	1,096.9	6,924.1	0.01	0.00	-0.01
13,500.0	90.01	0.42	6,432.7	6,941.9	1,097.6	7,023.4	0.01	0.00	-0.01
13,600.0	90.01	0.41	6,432.6	7,041.8	1,098.3	7,122.8	0.01	0.00	-0.01
13,700.0	90.01	0.41	6,432.6	7,141.8	1,099.1	7,222.2	0.01	0.00	-0.01
13,800.0	90.01	0.40	6,432.6	7,241.8	1,099.8	7,321.5	0.01	0.00	-0.01
13,900.0	90.01	0.39	6,432.6	7,341.8	1,100.4	7,420.9	0.01	0.00	-0.01

## Survey Report

<b>Company:</b>	Bison Oil & Gas II, LLC	<b>Local Co-ordinate Reference:</b>	Well ROSS 8-60 18-7-9
<b>Project:</b>	WELD COUNTY, COLORADO (NAD 83)	<b>TVD Reference:</b>	WELL @ 4953.0ft (Original Well Elev)
<b>Site:</b>	ROSS 8-60 18 SESW & SWSE SEC 18 T8N R60W 6th P.M.	<b>MD Reference:</b>	WELL @ 4953.0ft (Original Well Elev)
<b>Well:</b>	ROSS 8-60 18-7-9	<b>North Reference:</b>	True
<b>Wellbore:</b>	Wellbore #1	<b>Survey Calculation Method:</b>	Minimum Curvature
<b>Design:</b>	Design #1	<b>Database:</b>	EDM 5000.16 Single User Db

Planned Survey									
Measured Depth (ft)	Inclination (°)	Azimuth (°)	Vertical Depth (ft)	+N/-S (ft)	+E/-W (ft)	Vertical Section (ft)	Dogleg Rate (°/100ft)	Build Rate (°/100ft)	Turn Rate (°/100ft)
14,000.0	90.02	0.39	6,432.5	7,441.8	1,101.1	7,520.2	0.01	0.00	-0.01
14,100.0	90.02	0.38	6,432.5	7,541.8	1,101.8	7,619.6	0.01	0.00	-0.01
14,200.0	90.02	0.37	6,432.5	7,641.8	1,102.4	7,718.9	0.01	0.00	-0.01
14,300.0	90.02	0.36	6,432.5	7,741.8	1,103.1	7,818.3	0.01	0.00	-0.01
14,400.0	90.02	0.36	6,432.4	7,841.8	1,103.7	7,917.6	0.01	0.00	-0.01
14,500.0	90.02	0.35	6,432.4	7,941.8	1,104.3	8,017.0	0.01	0.00	-0.01
14,600.0	90.02	0.34	6,432.4	8,041.8	1,104.9	8,116.3	0.01	0.00	-0.01
14,700.0	90.02	0.34	6,432.3	8,141.8	1,105.5	8,215.7	0.01	0.00	-0.01
14,800.0	90.02	0.33	6,432.3	8,241.8	1,106.1	8,315.0	0.01	0.00	-0.01
14,900.0	90.02	0.32	6,432.3	8,341.8	1,106.7	8,414.4	0.01	0.00	-0.01
15,000.0	90.02	0.32	6,432.2	8,441.8	1,107.2	8,513.7	0.01	0.00	-0.01
15,100.0	90.02	0.31	6,432.2	8,541.8	1,107.8	8,613.0	0.01	0.00	-0.01
15,200.0	90.02	0.30	6,432.2	8,641.8	1,108.3	8,712.4	0.01	0.00	-0.01
15,300.0	90.02	0.29	6,432.1	8,741.8	1,108.8	8,811.7	0.01	0.00	-0.01
15,400.0	90.02	0.29	6,432.1	8,841.8	1,109.3	8,911.1	0.01	0.00	-0.01
15,500.0	90.02	0.28	6,432.0	8,941.8	1,109.8	9,010.4	0.01	0.00	-0.01
15,586.9	90.02	0.27	6,432.0	9,028.7	1,110.3	9,096.7	0.01	0.00	-0.01
Start 149.7 hold at 15586.9 MD - ROSS 8-60 18-7-9 EPI									
15,600.0	90.02	0.27	6,432.0	9,041.8	1,110.3	9,109.7	0.00	0.00	0.00
15,700.0	90.02	0.27	6,432.0	9,141.8	1,110.8	9,209.0	0.00	0.00	0.00
15,736.6	90.02	0.27	6,431.9	9,178.4	1,111.0	9,245.4	0.00	0.00	0.00
TD at 15736.6 - ROSS 8-60 18-7-9 BHL									

Design Targets									
Target Name	Dip Angle (°)	Dip Dir. (°)	TVD (ft)	+N/-S (ft)	+E/-W (ft)	Northing (m)	Easting (m)	Latitude	Longitude
ROSS 8-60 18-7-9 BF - hit/miss target - Shape - Point	0.00	0.88	6,432.0	460.9	1,024.4	452,749.65	1,030,199.62	40° 39' 27.918 N	104° 7' 50.336 W
ROSS 8-60 18-7-9 BF - plan misses target center by 0.2ft at 15736.6ft MD (6431.9 TVD, 9178.4 N, 1111.0 E) - Point	0.00	0.88	6,432.0	9,178.4	1,110.8	455,406.84	1,030,185.05	40° 40' 54.059 N	104° 7' 49.210 W
ROSS 8-60 18-7-9 EF - plan hits target center - Point	0.00	0.88	6,432.0	9,028.7	1,110.3	455,361.21	1,030,185.59	40° 40' 52.579 N	104° 7' 49.217 W

## Survey Report

<b>Company:</b>	Bison Oil & Gas II, LLC	<b>Local Co-ordinate Reference:</b>	Well ROSS 8-60 18-7-9
<b>Project:</b>	WELD COUNTY, COLORADO (NAD 83)	<b>TVD Reference:</b>	WELL @ 4953.0ft (Original Well Elev)
<b>Site:</b>	ROSS 8-60 18 SESW & SWSE SEC 18 T8N R60W 6th P.M.	<b>MD Reference:</b>	WELL @ 4953.0ft (Original Well Elev)
<b>Well:</b>	ROSS 8-60 18-7-9	<b>North Reference:</b>	True
<b>Wellbore:</b>	Wellbore #1	<b>Survey Calculation Method:</b>	Minimum Curvature
<b>Design:</b>	Design #1	<b>Database:</b>	EDM 5000.16 Single User Db

Formations						
Measured Depth (ft)	Vertical Depth (ft)	Name	Lithology	Dip (°)	Dip Direction (°)	
3,658.2	3,593.0	Parkman				
3,992.2	3,918.0	Sussex				
4,958.3	4,858.0	Shannon				
6,360.1	6,217.0	Sharon Springs Shale				
6,448.5	6,282.0	Niobrara Formation				
6,463.4	6,292.0	Niobrara A Chalk				
6,684.4	6,402.0	Niobrara B Chalk				
6,868.7	6,432.0	Niobrara B Landing Point				

Plan Annotations				
Measured Depth (ft)	Vertical Depth (ft)	Local Coordinates		Comment
		+N/-S (ft)	+E/-W (ft)	
800	800	0	0	Start Build 2.00
1467	1461	-19	75	Start 3851.5 hold at 1467.4 MD
5319	5209	-232	938	Start Drop -2.00
5986	5870	-251	1013	Start Build 10.20
6869	6432	311	1022	Start DLS 0.02 TFO -180.00
7019	6432	461	1024	Start DLS 0.01 TFO -85.38
15,587	6432	9029	1110	Start 149.7 hold at 15586.9 MD
15,737	6432	9178	1111	TD at 15736.6