

# **Bison Oil & Gas II, LLC**

**WELD COUNTY, COLORADO (NAD 83)**

**ROSS 8-60 18 SESW & SWSE SEC 18 T8N R60W 6th P.M.**

**ROSS 8-60 18-7-6**

**Wellbore #1**

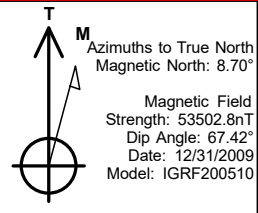
**Plan: Design #1**

## **Standard Survey Report**

**03 September, 2020**



Project: WELD COUNTY, COLORADO (NAD 83)  
Site: ROSS 8-60 18 SESW & SWSE SEC 18 T8N R60W 6th P.M.  
Well: ROSS 8-60 18-7-6  
Wellbore: Wellbore #1  
Design: Design #1



#### ANNOTATIONS

MD	Inc	Azi	TVD	+N/-S	+E/-W	VSec	Departure	Annotation
800.0	0.00	0.00	800.0	0.0	0.0	0.0	0.0	Start Build 1.50
1041.5	3.62	209.09	1041.4	-6.7	-3.7	-6.7	7.6	Start 4660.5 hold at 1041.5 MD
5702.1	3.62	209.09	5692.6	-264.0	-146.9	-263.2	302.2	Start Drop -1.50
5943.6	0.00	0.00	5934.0	-270.7	-150.6	-269.8	309.8	Start Build 10.00
6843.6	90.00	0.90	6507.0	302.2	-141.6	303.0	882.7	Start DLS 0.02 TFO 180.00
6994.3	89.97	0.90	6507.0	452.9	-139.3	453.7	1033.5	Start DLS 0.01 TFO -84.34
15566.2	90.03	0.25	6507.0	9024.3	-53.5	9024.4	9603.4	Start 150.1 hold at 15566.2 MD
15716.3	90.03	0.25	6506.9	9174.4	-52.9	9174.5	9753.5	TD at 15716.3

#### PROPOSED LOCAL COORDINATES:

SHL: 545 ft FSL & 2576 ft FWL Sec 18

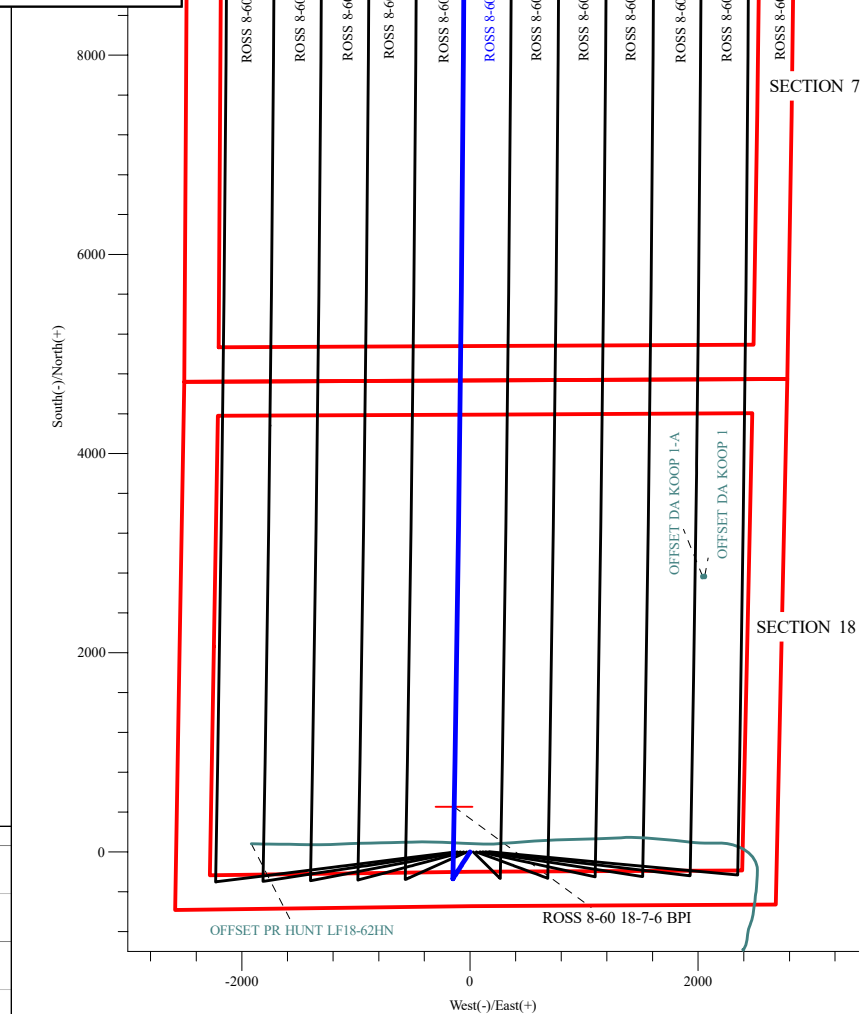
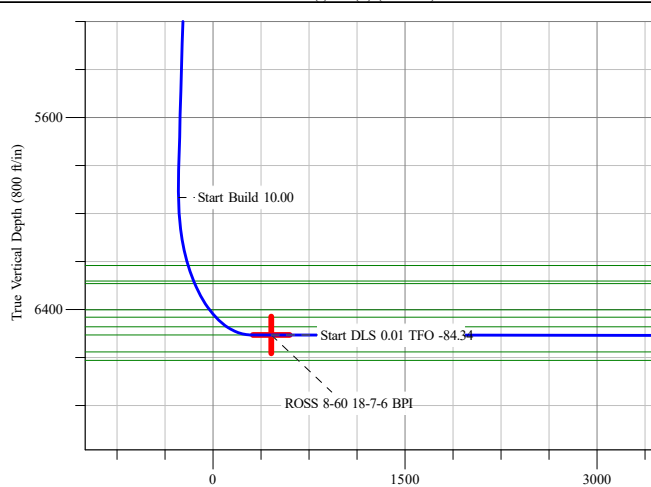
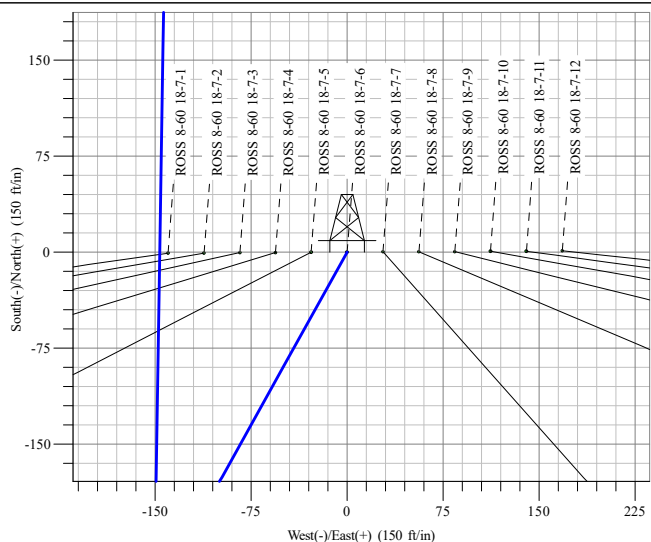
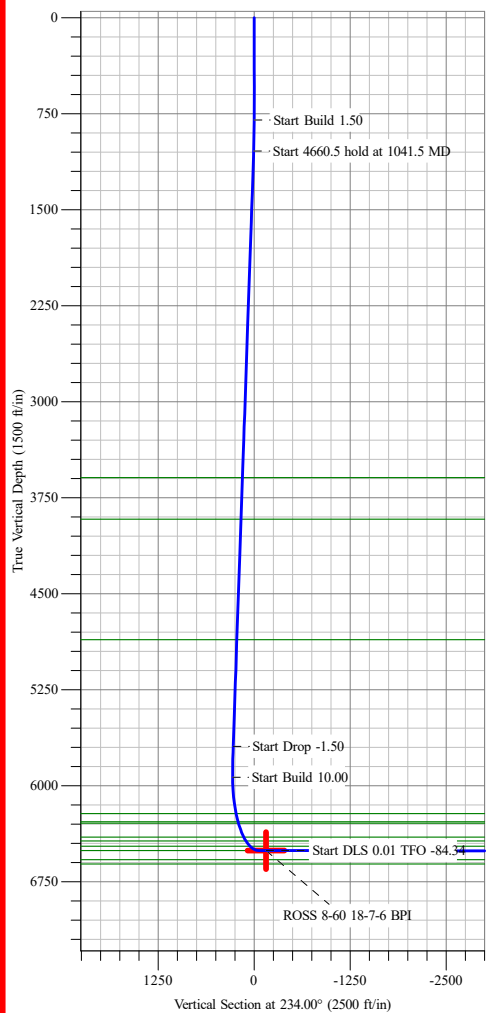
BPI: 1000 ft FSL & 2430 ft FWL Sec 18

EPI: 1000 ft FNL & 2430 ft FWL Sec 7

BHL: 850 ft FNL & 2430 ft FWL Sec 7

#### WELLBORE TARGET DETAILS (LAT/LONG)

Name	TVD	+N/-S	+E/-W	Northing	Easting	Latitude	Longitude
ROSS 8-60 18-7-6 BPI	6507.0	452.9	-139.3	452741.23	1029819.41	40° 39' 27.835 N	104° 8' 6.526 W
ROSS 8-60 18-7-6 EPI	6507.0	9024.3	-53.5	455353.90	1029805.32	40° 40' 52.532 N	104° 8' 5.413 W
ROSS 8-60 18-7-6 BHL	6507.0	9174.4	-52.7	455399.65	1029804.87	40° 40' 54.016 N	104° 8' 5.402 W



SECTION 7

SECTION 18

## Survey Report

<b>Company:</b>	Bison Oil & Gas II, LLC	<b>Local Co-ordinate Reference:</b>	Well ROSS 8-60 18-7-6
<b>Project:</b>	WELD COUNTY, COLORADO (NAD 83)	<b>TVD Reference:</b>	WELL @ 4953.0ft (Original Well Elev)
<b>Site:</b>	ROSS 8-60 18 SESW & SWSE SEC 18 T8N R60W 6th P.M.	<b>MD Reference:</b>	WELL @ 4953.0ft (Original Well Elev)
<b>Well:</b>	ROSS 8-60 18-7-6	<b>North Reference:</b>	True
<b>Wellbore:</b>	Wellbore #1	<b>Survey Calculation Method:</b>	Minimum Curvature
<b>Design:</b>	Design #1	<b>Database:</b>	EDM 5000.16 Single User Db

<b>Project</b>	WELD COUNTY, COLORADO (NAD 83),		
<b>Map System:</b>	US State Plane 1983	<b>System Datum:</b>	Mean Sea Level
<b>Geo Datum:</b>	North American Datum 1983		
<b>Map Zone:</b>	Colorado Northern Zone		

Site		ROSS 8-60 18 SESW & SWSE SEC 18 T8N R60W 6th P.M.			
Site Position:		Northing:	452,604.25 m	Latitude:	40° 39' 23.364 N
From:	Lat/Long	Easting:	1,029,881.06 m	Longitude:	104° 8' 3.991 W
Position Uncertainty:	0.0 ft	Slot Radius:	13.200 in		

Well	ROSS 8-60 18-7-6					
Well Position	+N/-S	0.0 ft	Northing:	452,603.87 m	Latitude:	40° 39' 23.360 N
	+E/-W	0.0 ft	Easting:	1,029,863.98 m	Longitude:	104° 8' 4.718 W
Position Uncertainty		0.0 ft	Wellhead Elevation:	ft	Ground Level:	4,951.5 ft
Grid Convergence:		0.88 °				

<b>Wellbore</b>	Wellbore #1
-----------------	-------------

Magnetics	Model Name	Sample Date	Declination (°)	Dip Angle (°)	Field Strength (nT)
	IGRF200510	12/31/2009	8.70	67.42	53,502.80677077

Planned Survey									
Measured Depth (ft)	Inclination (°)	Azimuth (°)	Vertical Depth (ft)	+N/-S (ft)	+E/-W (ft)	Vertical Section (ft)	Dogleg Rate (°/100ft)	Build Rate (°/100ft)	Turn Rate (°/100ft)
0.0	0.00	0.00	0.0	0.0	0.0	0.0	0.00	0.00	0.00
100.0	0.00	0.00	100.0	0.0	0.0	0.0	0.00	0.00	0.00
200.0	0.00	0.00	200.0	0.0	0.0	0.0	0.00	0.00	0.00
300.0	0.00	0.00	300.0	0.0	0.0	0.0	0.00	0.00	0.00
400.0	0.00	0.00	400.0	0.0	0.0	0.0	0.00	0.00	0.00
500.0	0.00	0.00	500.0	0.0	0.0	0.0	0.00	0.00	0.00
600.0	0.00	0.00	600.0	0.0	0.0	0.0	0.00	0.00	0.00
700.0	0.00	0.00	700.0	0.0	0.0	0.0	0.00	0.00	0.00
800.0	0.00	0.00	800.0	0.0	0.0	0.0	0.00	0.00	0.00
<b>Start Build 1.50</b>									
900.0	1.50	209.09	900.0	-1.1	-0.6	-1.1	1.50	1.50	0.00
1,000.0	3.00	209.09	999.9	-4.6	-2.5	-4.6	1.50	1.50	0.00
1,041.5	3.62	209.09	1,041.4	-6.7	-3.7	-6.7	1.50	1.50	0.00
<b>Start 4660.5 hold at 1041.5 MD</b>									
1,100.0	3.62	209.09	1,099.7	-9.9	-5.5	-9.9	0.00	0.00	0.00
1,200.0	3.62	209.09	1,199.5	-15.4	-8.6	-15.4	0.00	0.00	0.00
1,300.0	3.62	209.09	1,299.3	-20.9	-11.7	-20.9	0.00	0.00	0.00
1,400.0	3.62	209.09	1,399.1	-26.5	-14.7	-26.4	0.00	0.00	0.00
1,500.0	3.62	209.09	1,498.9	-32.0	-17.8	-31.9	0.00	0.00	0.00
1,600.0	3.62	209.09	1,598.7	-37.5	-20.9	-37.4	0.00	0.00	0.00
1,700.0	3.62	209.09	1,698.5	-43.0	-23.9	-42.9	0.00	0.00	0.00
1,800.0	3.62	209.09	1,798.3	-48.6	-27.0	-48.4	0.00	0.00	0.00

## Survey Report

<b>Company:</b>	Bison Oil & Gas II, LLC	<b>Local Co-ordinate Reference:</b>	Well ROSS 8-60 18-7-6
<b>Project:</b>	WELD COUNTY, COLORADO (NAD 83)	<b>TVD Reference:</b>	WELL @ 4953.0ft (Original Well Elev)
<b>Site:</b>	ROSS 8-60 18 SESW & SWSE SEC 18 T8N R60W 6th P.M.	<b>MD Reference:</b>	WELL @ 4953.0ft (Original Well Elev)
<b>Well:</b>	ROSS 8-60 18-7-6	<b>North Reference:</b>	True
<b>Wellbore:</b>	Wellbore #1	<b>Survey Calculation Method:</b>	Minimum Curvature
<b>Design:</b>	Design #1	<b>Database:</b>	EDM 5000.16 Single User Db

Planned Survey									
Measured Depth (ft)	Inclination (°)	Azimuth (°)	Vertical Depth (ft)	+N/-S (ft)	+E/-W (ft)	Vertical Section (ft)	Dogleg Rate (°/100ft)	Build Rate (°/100ft)	Turn Rate (°/100ft)
1,900.0	3.62	209.09	1,898.1	-54.1	-30.1	-53.9	0.00	0.00	0.00
2,000.0	3.62	209.09	1,997.9	-59.6	-33.2	-59.4	0.00	0.00	0.00
2,100.0	3.62	209.09	2,097.7	-65.1	-36.2	-64.9	0.00	0.00	0.00
2,200.0	3.62	209.09	2,197.5	-70.6	-39.3	-70.4	0.00	0.00	0.00
2,300.0	3.62	209.09	2,297.3	-76.2	-42.4	-75.9	0.00	0.00	0.00
2,400.0	3.62	209.09	2,397.1	-81.7	-45.4	-81.4	0.00	0.00	0.00
2,500.0	3.62	209.09	2,496.9	-87.2	-48.5	-86.9	0.00	0.00	0.00
2,600.0	3.62	209.09	2,596.7	-92.7	-51.6	-92.4	0.00	0.00	0.00
2,700.0	3.62	209.09	2,696.5	-98.3	-54.7	-97.9	0.00	0.00	0.00
2,800.0	3.62	209.09	2,796.3	-103.8	-57.7	-103.4	0.00	0.00	0.00
2,900.0	3.62	209.09	2,896.1	-109.3	-60.8	-108.9	0.00	0.00	0.00
3,000.0	3.62	209.09	2,995.9	-114.8	-63.9	-114.5	0.00	0.00	0.00
3,100.0	3.62	209.09	3,095.7	-120.3	-67.0	-120.0	0.00	0.00	0.00
3,200.0	3.62	209.09	3,195.5	-125.9	-70.0	-125.5	0.00	0.00	0.00
3,300.0	3.62	209.09	3,295.3	-131.4	-73.1	-131.0	0.00	0.00	0.00
3,400.0	3.62	209.09	3,395.1	-136.9	-76.2	-136.5	0.00	0.00	0.00
3,500.0	3.62	209.09	3,494.9	-142.4	-79.2	-142.0	0.00	0.00	0.00
3,600.0	3.62	209.09	3,594.7	-148.0	-82.3	-147.5	0.00	0.00	0.00
3,700.0	3.62	209.09	3,694.5	-153.5	-85.4	-153.0	0.00	0.00	0.00
3,800.0	3.62	209.09	3,794.3	-159.0	-88.5	-158.5	0.00	0.00	0.00
3,900.0	3.62	209.09	3,894.1	-164.5	-91.5	-164.0	0.00	0.00	0.00
4,000.0	3.62	209.09	3,993.9	-170.0	-94.6	-169.5	0.00	0.00	0.00
4,100.0	3.62	209.09	4,093.7	-175.6	-97.7	-175.0	0.00	0.00	0.00
4,200.0	3.62	209.09	4,193.5	-181.1	-100.7	-180.5	0.00	0.00	0.00
4,300.0	3.62	209.09	4,293.3	-186.6	-103.8	-186.0	0.00	0.00	0.00
4,400.0	3.62	209.09	4,393.1	-192.1	-106.9	-191.5	0.00	0.00	0.00
4,500.0	3.62	209.09	4,492.9	-197.7	-110.0	-197.0	0.00	0.00	0.00
4,600.0	3.62	209.09	4,592.7	-203.2	-113.0	-202.5	0.00	0.00	0.00
4,700.0	3.62	209.09	4,692.5	-208.7	-116.1	-208.0	0.00	0.00	0.00
4,800.0	3.62	209.09	4,792.3	-214.2	-119.2	-213.5	0.00	0.00	0.00
4,900.0	3.62	209.09	4,892.1	-219.7	-122.3	-219.0	0.00	0.00	0.00
5,000.0	3.62	209.09	4,991.9	-225.3	-125.3	-224.5	0.00	0.00	0.00
5,100.0	3.62	209.09	5,091.7	-230.8	-128.4	-230.0	0.00	0.00	0.00
5,200.0	3.62	209.09	5,191.5	-236.3	-131.5	-235.6	0.00	0.00	0.00
5,300.0	3.62	209.09	5,291.3	-241.8	-134.5	-241.1	0.00	0.00	0.00
5,400.0	3.62	209.09	5,391.1	-247.4	-137.6	-246.6	0.00	0.00	0.00
5,500.0	3.62	209.09	5,490.9	-252.9	-140.7	-252.1	0.00	0.00	0.00
5,600.0	3.62	209.09	5,590.7	-258.4	-143.8	-257.6	0.00	0.00	0.00
5,700.0	3.62	209.09	5,690.5	-263.9	-146.8	-263.1	0.00	0.00	0.00
5,702.1	3.62	209.09	5,692.6	-264.0	-146.9	-263.2	0.00	0.00	0.00
Start Drop -1.50									
5,800.0	2.15	209.09	5,790.4	-268.4	-149.3	-267.5	1.50	-1.50	0.00
5,900.0	0.65	209.09	5,890.4	-270.5	-150.5	-269.6	1.50	-1.50	0.00

## Survey Report

<b>Company:</b>	Bison Oil & Gas II, LLC	<b>Local Co-ordinate Reference:</b>	Well ROSS 8-60 18-7-6
<b>Project:</b>	WELD COUNTY, COLORADO (NAD 83)	<b>TVD Reference:</b>	WELL @ 4953.0ft (Original Well Elev)
<b>Site:</b>	ROSS 8-60 18 SESW & SWSE SEC 18 T8N R60W 6th P.M.	<b>MD Reference:</b>	WELL @ 4953.0ft (Original Well Elev)
<b>Well:</b>	ROSS 8-60 18-7-6	<b>North Reference:</b>	True
<b>Wellbore:</b>	Wellbore #1	<b>Survey Calculation Method:</b>	Minimum Curvature
<b>Design:</b>	Design #1	<b>Database:</b>	EDM 5000.16 Single User Db

### Planned Survey

Measured Depth (ft)	Inclination (°)	Azimuth (°)	Vertical Depth (ft)	+N/-S (ft)	+E/-W (ft)	Vertical Section (ft)	Dogleg Rate (°/100ft)	Build Rate (°/100ft)	Turn Rate (°/100ft)
5,943.6	0.00	0.00	5,934.0	-270.7	-150.6	-269.8	1.50	-1.50	0.00
<b>Start Build 10.00</b>									
6,000.0	5.64	0.90	5,990.3	-267.9	-150.6	-267.1	10.00	10.00	0.00
6,100.0	15.64	0.90	6,088.4	-249.5	-150.3	-248.6	10.00	10.00	0.00
6,200.0	25.64	0.90	6,181.9	-214.3	-149.7	-213.5	10.00	10.00	0.00
6,300.0	35.64	0.90	6,267.8	-163.4	-148.9	-162.6	10.00	10.00	0.00
6,400.0	45.64	0.90	6,343.6	-98.4	-147.9	-97.5	10.00	10.00	0.00
6,500.0	55.64	0.90	6,407.0	-21.2	-146.7	-20.3	10.00	10.00	0.00
6,600.0	65.64	0.90	6,455.9	65.8	-145.3	66.7	10.00	10.00	0.00
6,700.0	75.64	0.90	6,489.0	160.1	-143.9	160.9	10.00	10.00	0.00
6,800.0	85.64	0.90	6,505.3	258.6	-142.3	259.4	10.00	10.00	0.00
6,843.6	90.00	0.90	6,507.0	302.2	-141.6	303.0	10.00	10.00	0.00
<b>Start DLS 0.02 TFO 180.00</b>									
6,900.0	89.99	0.90	6,507.0	358.5	-140.8	359.3	0.02	-0.02	0.00
6,994.3	89.97	0.90	6,507.0	452.9	-139.3	453.7	0.02	-0.02	0.00
<b>Start DLS 0.01 TFO -84.34 - ROSS 8-60 18-7-6 BPI</b>									
7,000.0	89.97	0.90	6,507.0	458.5	-139.2	459.3	0.01	0.00	-0.01
7,100.0	89.97	0.89	6,507.1	558.5	-137.6	559.3	0.01	0.00	-0.01
7,200.0	89.97	0.88	6,507.1	658.5	-136.1	659.3	0.01	0.00	-0.01
7,300.0	89.97	0.87	6,507.2	758.5	-134.6	759.2	0.01	0.00	-0.01
7,400.0	89.97	0.87	6,507.2	858.5	-133.0	859.2	0.01	0.00	-0.01
7,500.0	89.97	0.86	6,507.3	958.5	-131.5	959.2	0.01	0.00	-0.01
7,600.0	89.97	0.85	6,507.3	1,058.4	-130.0	1,059.2	0.01	0.00	-0.01
7,700.0	89.97	0.84	6,507.4	1,158.4	-128.6	1,159.2	0.01	0.00	-0.01
7,800.0	89.97	0.84	6,507.4	1,258.4	-127.1	1,259.1	0.01	0.00	-0.01
7,900.0	89.97	0.83	6,507.5	1,358.4	-125.6	1,359.1	0.01	0.00	-0.01
8,000.0	89.98	0.82	6,507.5	1,458.4	-124.2	1,459.1	0.01	0.00	-0.01
8,100.0	89.98	0.81	6,507.5	1,558.4	-122.8	1,559.1	0.01	0.00	-0.01
8,200.0	89.98	0.81	6,507.6	1,658.4	-121.4	1,659.1	0.01	0.00	-0.01
8,300.0	89.98	0.80	6,507.6	1,758.4	-120.0	1,759.0	0.01	0.00	-0.01
8,400.0	89.98	0.79	6,507.7	1,858.4	-118.6	1,859.0	0.01	0.00	-0.01
8,500.0	89.98	0.78	6,507.7	1,958.4	-117.2	1,959.0	0.01	0.00	-0.01
8,600.0	89.98	0.78	6,507.7	2,058.3	-115.8	2,059.0	0.01	0.00	-0.01
8,700.0	89.98	0.77	6,507.8	2,158.3	-114.5	2,159.0	0.01	0.00	-0.01
8,800.0	89.98	0.76	6,507.8	2,258.3	-113.2	2,258.9	0.01	0.00	-0.01
8,900.0	89.98	0.75	6,507.8	2,358.3	-111.8	2,358.9	0.01	0.00	-0.01
9,000.0	89.98	0.75	6,507.9	2,458.3	-110.5	2,458.9	0.01	0.00	-0.01
9,100.0	89.98	0.74	6,507.9	2,558.3	-109.2	2,558.9	0.01	0.00	-0.01
9,200.0	89.98	0.73	6,507.9	2,658.3	-108.0	2,658.9	0.01	0.00	-0.01
9,300.0	89.99	0.72	6,507.9	2,758.3	-106.7	2,758.9	0.01	0.00	-0.01
9,400.0	89.99	0.72	6,508.0	2,858.3	-105.4	2,858.8	0.01	0.00	-0.01
9,500.0	89.99	0.71	6,508.0	2,958.3	-104.2	2,958.8	0.01	0.00	-0.01
9,600.0	89.99	0.70	6,508.0	3,058.3	-103.0	3,058.8	0.01	0.00	-0.01

## Survey Report

<b>Company:</b>	Bison Oil & Gas II, LLC	<b>Local Co-ordinate Reference:</b>	Well ROSS 8-60 18-7-6
<b>Project:</b>	WELD COUNTY, COLORADO (NAD 83)	<b>TVD Reference:</b>	WELL @ 4953.0ft (Original Well Elev)
<b>Site:</b>	ROSS 8-60 18 SESW & SWSE SEC 18 T8N R60W 6th P.M.	<b>MD Reference:</b>	WELL @ 4953.0ft (Original Well Elev)
<b>Well:</b>	ROSS 8-60 18-7-6	<b>North Reference:</b>	True
<b>Wellbore:</b>	Wellbore #1	<b>Survey Calculation Method:</b>	Minimum Curvature
<b>Design:</b>	Design #1	<b>Database:</b>	EDM 5000.16 Single User Db

### Planned Survey

Measured Depth (ft)	Inclination (°)	Azimuth (°)	Vertical Depth (ft)	+N/-S (ft)	+E/-W (ft)	Vertical Section (ft)	Dogleg Rate (°/100ft)	Build Rate (°/100ft)	Turn Rate (°/100ft)
9,700.0	89.99	0.69	6,508.0	3,158.3	-101.8	3,158.8	0.01	0.00	-0.01
9,800.0	89.99	0.69	6,508.1	3,258.2	-100.5	3,258.8	0.01	0.00	-0.01
9,900.0	89.99	0.68	6,508.1	3,358.2	-99.4	3,358.8	0.01	0.00	-0.01
10,000.0	89.99	0.67	6,508.1	3,458.2	-98.2	3,458.7	0.01	0.00	-0.01
10,100.0	89.99	0.66	6,508.1	3,558.2	-97.0	3,558.7	0.01	0.00	-0.01
10,200.0	89.99	0.65	6,508.1	3,658.2	-95.9	3,658.7	0.01	0.00	-0.01
10,300.0	89.99	0.65	6,508.1	3,758.2	-94.7	3,758.7	0.01	0.00	-0.01
10,400.0	89.99	0.64	6,508.1	3,858.2	-93.6	3,858.7	0.01	0.00	-0.01
10,500.0	89.99	0.63	6,508.2	3,958.2	-92.5	3,958.7	0.01	0.00	-0.01
10,600.0	89.99	0.62	6,508.2	4,058.2	-91.4	4,058.7	0.01	0.00	-0.01
10,700.0	90.00	0.62	6,508.2	4,158.2	-90.3	4,158.6	0.01	0.00	-0.01
10,800.0	90.00	0.61	6,508.2	4,258.2	-89.3	4,258.6	0.01	0.00	-0.01
10,900.0	90.00	0.60	6,508.2	4,358.2	-88.2	4,358.6	0.01	0.00	-0.01
11,000.0	90.00	0.59	6,508.2	4,458.2	-87.2	4,458.6	0.01	0.00	-0.01
11,100.0	90.00	0.59	6,508.2	4,558.2	-86.1	4,558.6	0.01	0.00	-0.01
11,200.0	90.00	0.58	6,508.2	4,658.2	-85.1	4,658.6	0.01	0.00	-0.01
11,300.0	90.00	0.57	6,508.2	4,758.2	-84.1	4,758.6	0.01	0.00	-0.01
11,400.0	90.00	0.56	6,508.2	4,858.2	-83.1	4,858.6	0.01	0.00	-0.01
11,500.0	90.00	0.56	6,508.2	4,958.1	-82.1	4,958.5	0.01	0.00	-0.01
11,600.0	90.00	0.55	6,508.2	5,058.1	-81.2	5,058.5	0.01	0.00	-0.01
11,700.0	90.00	0.54	6,508.2	5,158.1	-80.2	5,158.5	0.01	0.00	-0.01
11,800.0	90.00	0.53	6,508.2	5,258.1	-79.3	5,258.5	0.01	0.00	-0.01
11,900.0	90.00	0.53	6,508.2	5,358.1	-78.3	5,358.5	0.01	0.00	-0.01
12,000.0	90.01	0.52	6,508.2	5,458.1	-77.4	5,458.5	0.01	0.00	-0.01
12,100.0	90.01	0.51	6,508.2	5,558.1	-76.5	5,558.5	0.01	0.00	-0.01
12,200.0	90.01	0.50	6,508.1	5,658.1	-75.7	5,658.5	0.01	0.00	-0.01
12,300.0	90.01	0.50	6,508.1	5,758.1	-74.8	5,758.5	0.01	0.00	-0.01
12,400.0	90.01	0.49	6,508.1	5,858.1	-73.9	5,858.4	0.01	0.00	-0.01
12,500.0	90.01	0.48	6,508.1	5,958.1	-73.1	5,958.4	0.01	0.00	-0.01
12,600.0	90.01	0.47	6,508.1	6,058.1	-72.2	6,058.4	0.01	0.00	-0.01
12,700.0	90.01	0.47	6,508.1	6,158.1	-71.4	6,158.4	0.01	0.00	-0.01
12,800.0	90.01	0.46	6,508.0	6,258.1	-70.6	6,258.4	0.01	0.00	-0.01
12,900.0	90.01	0.45	6,508.0	6,358.1	-69.8	6,358.4	0.01	0.00	-0.01
13,000.0	90.01	0.44	6,508.0	6,458.1	-69.0	6,458.4	0.01	0.00	-0.01
13,100.0	90.01	0.44	6,508.0	6,558.1	-68.3	6,558.4	0.01	0.00	-0.01
13,200.0	90.01	0.43	6,508.0	6,658.1	-67.5	6,658.4	0.01	0.00	-0.01
13,300.0	90.02	0.42	6,507.9	6,758.1	-66.8	6,758.4	0.01	0.00	-0.01
13,400.0	90.02	0.41	6,507.9	6,858.1	-66.1	6,858.3	0.01	0.00	-0.01
13,500.0	90.02	0.41	6,507.9	6,958.1	-65.3	6,958.3	0.01	0.00	-0.01
13,600.0	90.02	0.40	6,507.8	7,058.1	-64.6	7,058.3	0.01	0.00	-0.01
13,700.0	90.02	0.39	6,507.8	7,158.1	-63.9	7,158.3	0.01	0.00	-0.01
13,800.0	90.02	0.38	6,507.8	7,258.1	-63.3	7,258.3	0.01	0.00	-0.01
13,900.0	90.02	0.38	6,507.8	7,358.1	-62.6	7,358.3	0.01	0.00	-0.01

## Survey Report

<b>Company:</b>	Bison Oil & Gas II, LLC	<b>Local Co-ordinate Reference:</b>	Well ROSS 8-60 18-7-6
<b>Project:</b>	WELD COUNTY, COLORADO (NAD 83)	<b>TVD Reference:</b>	WELL @ 4953.0ft (Original Well Elev)
<b>Site:</b>	ROSS 8-60 18 SESW & SWSE SEC 18 T8N R60W 6th P.M.	<b>MD Reference:</b>	WELL @ 4953.0ft (Original Well Elev)
<b>Well:</b>	ROSS 8-60 18-7-6	<b>North Reference:</b>	True
<b>Wellbore:</b>	Wellbore #1	<b>Survey Calculation Method:</b>	Minimum Curvature
<b>Design:</b>	Design #1	<b>Database:</b>	EDM 5000.16 Single User Db

Planned Survey									
Measured Depth (ft)	Inclination (°)	Azimuth (°)	Vertical Depth (ft)	+N/-S (ft)	+E/-W (ft)	Vertical Section (ft)	Dogleg Rate (°/100ft)	Build Rate (°/100ft)	Turn Rate (°/100ft)
14,000.0	90.02	0.37	6,507.7	7,458.1	-62.0	7,458.3	0.01	0.00	-0.01
14,100.0	90.02	0.36	6,507.7	7,558.1	-61.3	7,558.3	0.01	0.00	-0.01
14,200.0	90.02	0.35	6,507.6	7,658.1	-60.7	7,658.3	0.01	0.00	-0.01
14,300.0	90.02	0.35	6,507.6	7,758.1	-60.1	7,758.3	0.01	0.00	-0.01
14,400.0	90.02	0.34	6,507.6	7,858.1	-59.5	7,858.3	0.01	0.00	-0.01
14,500.0	90.02	0.33	6,507.5	7,958.1	-58.9	7,958.3	0.01	0.00	-0.01
14,600.0	90.02	0.32	6,507.5	8,058.1	-58.4	8,058.3	0.01	0.00	-0.01
14,700.0	90.03	0.31	6,507.4	8,158.1	-57.8	8,158.3	0.01	0.00	-0.01
14,800.0	90.03	0.31	6,507.4	8,258.1	-57.3	8,258.2	0.01	0.00	-0.01
14,900.0	90.03	0.30	6,507.3	8,358.1	-56.7	8,358.2	0.01	0.00	-0.01
15,000.0	90.03	0.29	6,507.3	8,458.1	-56.2	8,458.2	0.01	0.00	-0.01
15,100.0	90.03	0.28	6,507.2	8,558.0	-55.7	8,558.2	0.01	0.00	-0.01
15,200.0	90.03	0.28	6,507.2	8,658.0	-55.2	8,658.2	0.01	0.00	-0.01
15,300.0	90.03	0.27	6,507.1	8,758.0	-54.7	8,758.2	0.01	0.00	-0.01
15,400.0	90.03	0.26	6,507.1	8,858.0	-54.3	8,858.2	0.01	0.00	-0.01
15,500.0	90.03	0.25	6,507.0	8,958.0	-53.8	8,958.2	0.01	0.00	-0.01
15,566.2	90.03	0.25	6,507.0	9,024.3	-53.5	9,024.4	0.01	0.00	-0.01
Start 150.1 hold at 15566.2 MD - ROSS 8-60 18-7-6 EPI									
15,600.0	90.03	0.25	6,507.0	9,058.0	-53.4	9,058.2	0.00	0.00	0.00
15,700.0	90.03	0.25	6,506.9	9,158.0	-52.9	9,158.2	0.00	0.00	0.00
15,716.3	90.03	0.25	6,506.9	9,174.4	-52.9	9,174.5	0.00	0.00	0.00
TD at 15716.3 - ROSS 8-60 18-7-6 BHL									

Design Targets									
Target Name	Dip Angle (°)	Dip Dir. (°)	TVD (ft)	+N/-S (ft)	+E/-W (ft)	Northing (m)	Easting (m)	Latitude	Longitude
ROSS 8-60 18-7-6 BH - hit/miss target - Shape - Point	0.00	0.88	6,507.0	9,174.4	-52.7	455,399.65	1,029,804.87	40° 40' 54.016 N	104° 8' 5.402 W
- plan misses target center by 0.2ft at 15716.3ft MD (6506.9 TVD, 9174.4 N, -52.9 E)									
ROSS 8-60 18-7-6 EF - plan hits target center - Point	0.00	0.89	6,507.0	9,024.3	-53.5	455,353.90	1,029,805.32	40° 40' 52.532 N	104° 8' 5.413 W
ROSS 8-60 18-7-6 BF - plan hits target center - Point	0.00	0.88	6,507.0	452.9	-139.3	452,741.23	1,029,819.41	40° 39' 27.835 N	104° 8' 6.526 W

## Survey Report

<b>Company:</b>	Bison Oil & Gas II, LLC	<b>Local Co-ordinate Reference:</b>	Well ROSS 8-60 18-7-6
<b>Project:</b>	WELD COUNTY, COLORADO (NAD 83)	<b>TVD Reference:</b>	WELL @ 4953.0ft (Original Well Elev)
<b>Site:</b>	ROSS 8-60 18 SESW & SWSE SEC 18 T8N R60W 6th P.M.	<b>MD Reference:</b>	WELL @ 4953.0ft (Original Well Elev)
<b>Well:</b>	ROSS 8-60 18-7-6	<b>North Reference:</b>	True
<b>Wellbore:</b>	Wellbore #1	<b>Survey Calculation Method:</b>	Minimum Curvature
<b>Design:</b>	Design #1	<b>Database:</b>	EDM 5000.16 Single User Db

Formations						
Measured Depth (ft)	Vertical Depth (ft)	Name	Lithology	Dip (°)	Dip Direction (°)	
3,598.3	3,593.0	Parkman				
3,923.9	3,918.0	Sussex				
4,865.8	4,858.0	Shannon				
6,239.6	6,217.0	Sharon Springs Shale				
6,317.6	6,282.0	Niobrara Formation				
6,330.3	6,292.0	Niobrara A Chalk				
6,491.3	6,402.0	Niobrara B Chalk				
6,547.3	6,432.0	Niobrara B Landing Point				
6,642.5	6,472.0	Niobrara C Chalk				
6,843.6	6,507.0	Niobrara C Landing Point				

Plan Annotations					
Measured Depth (ft)	Vertical Depth (ft)	Local Coordinates			
		+N/-S (ft)	+E/-W (ft)	Comment	
800	800	0	0	Start Build 1.50	
1042	1041	-7	-4	Start 4660.5 hold at 1041.5 MD	
5702	5693	-264	-147	Start Drop -1.50	
5944	5934	-271	-151	Start Build 10.00	
6844	6507	302	-142	Start DLS 0.02 TFO 180.00	
6994	6507	453	-139	Start DLS 0.01 TFO -84.34	
15,566	6507	9024	-54	Start 150.1 hold at 15566.2 MD	
15,716	6507	9174	-53	TD at 15716.3	