

Bison Oil & Gas II, LLC

WELD COUNTY, COLORADO (NAD 83)

ROSS 8-60 18 SESW & SWSE SEC 18 T8N R60W 6th P.M.

ROSS 8-60 18-7-3

Wellbore #1

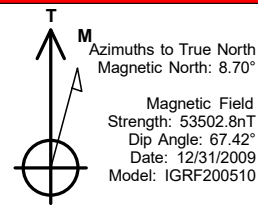
Plan: Design #1

Standard Survey Report

02 September, 2020



Project: WELD COUNTY, COLORADO (NAD 83)
Site: ROSS 8-60 18 SESW & SWSE SEC 18 T8N R60W 6th P.M.
Well: ROSS 8-60 18-7-3
Wellbore: Wellbore #1
Design: Design #1



ANNOTATIONS

MD	Inc	Azi	TVD	+N/-S	+E/-W	VSec	Departure	Annotation
800.0	0.00	0.00	800.0	0.0	0.0	0.0	0.0	Start Build 1.50
2126.6	19.90	257.61	2100.1	-48.9	-222.8	-19.2	228.1	Start 2614.9 hold at 2126.6 MD
4741.5	19.90	257.61	4558.9	-239.9	-1092.1	-94.2	1118.1	Start Drop -1.50
6068.1	0.00	0.00	5859.0	-288.8	-1314.8	-113.4	1346.2	Start Build 10.00
6968.1	90.00	0.88	6432.0	284.1	-1306.1	453.4	1919.1	Start DLS 0.02 TFO 180.00
7119.1	89.97	0.88	6432.0	435.0	-1303.7	602.7	2070.1	Start DLS 0.01 TFO -83.88
15704.5	90.03	0.28	6432.0	9019.9	-1217.3	9101.7	10655.5	Start 150.1 hold at 15704.5 MD
15854.6	90.03	0.28	6431.9	9170.0	-1216.6	9250.4	10805.5	TD at 15854.6

PROPOSED LOCAL COORDINATES:

SHL: 546 ft FSL & 2492 ft FWL Sec 18

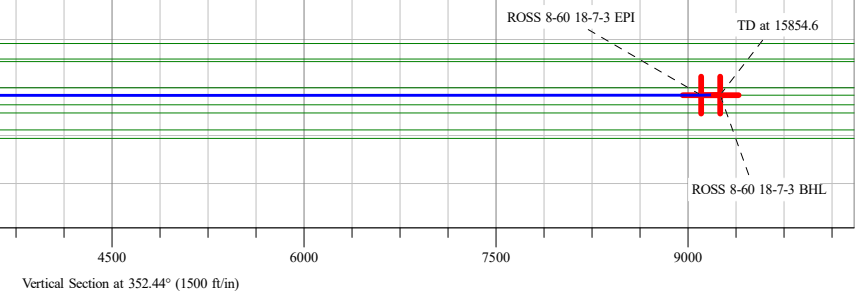
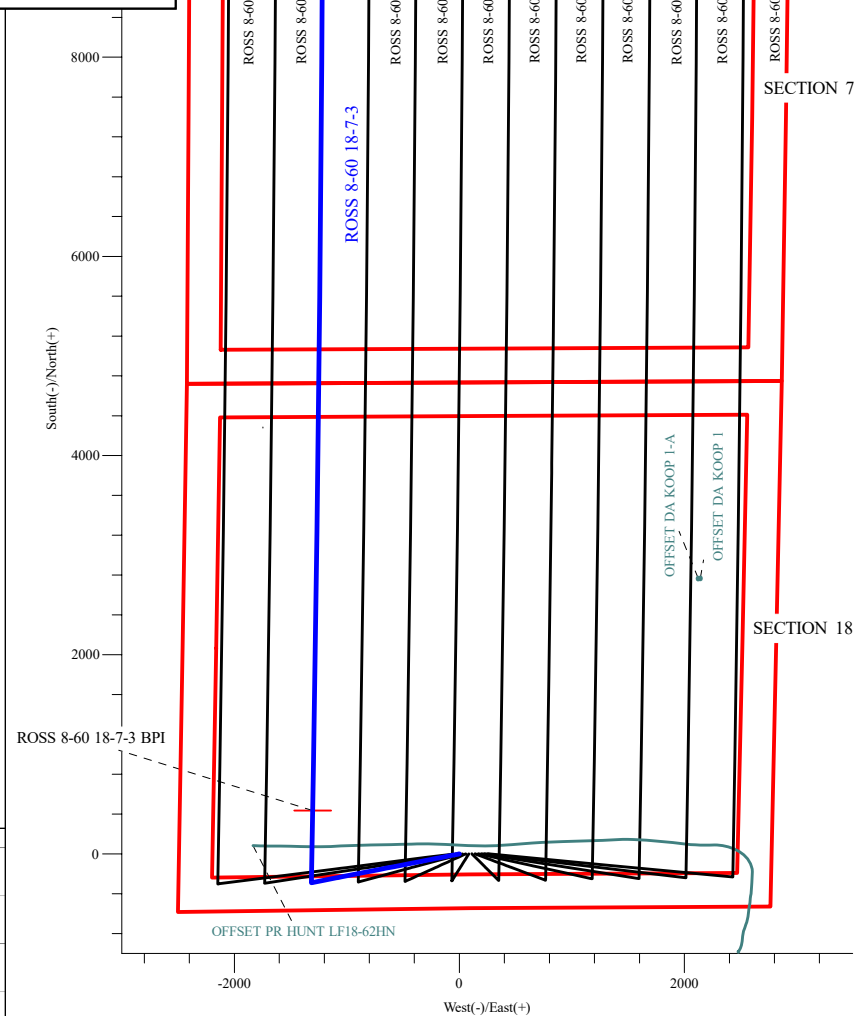
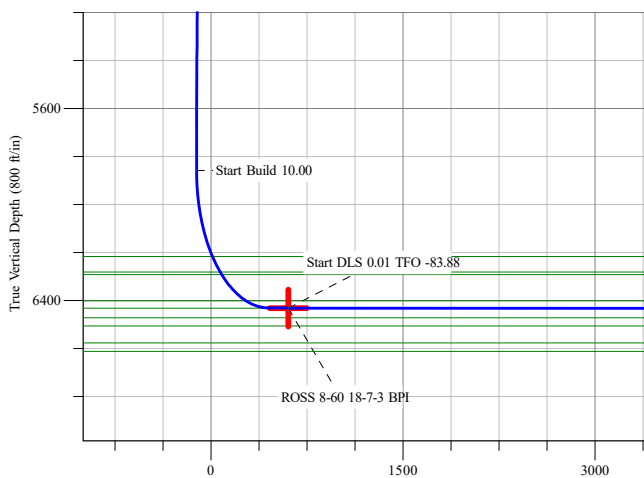
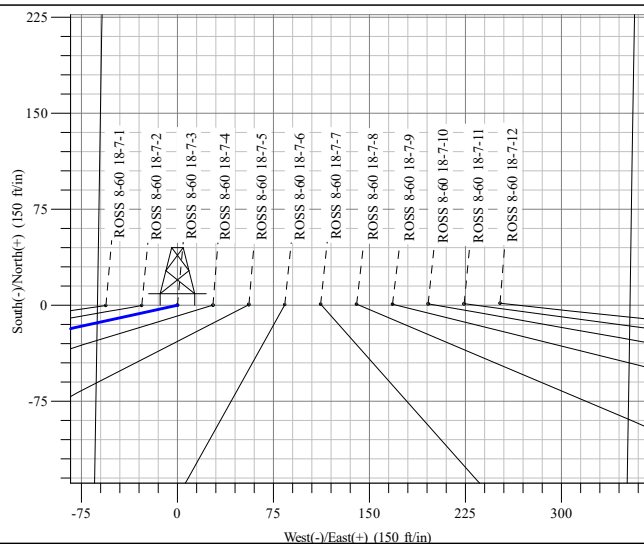
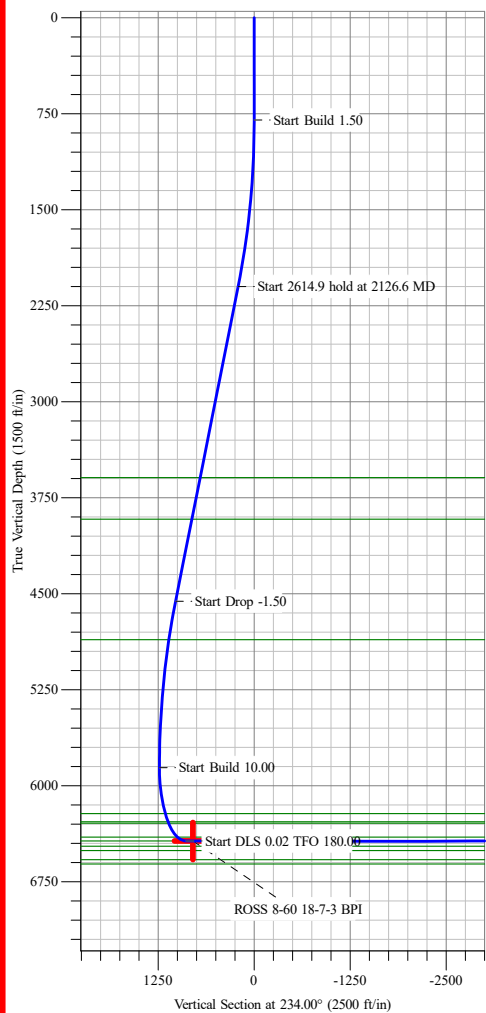
BPI: 1000 ft FSL & 1182 ft FWL Sec 18

EPI: 1000 ft FNL & 1182 ft FWL Sec 7

BHL: 850 ft FNL & 1182 ft FWL Sec 7

WELLBORE TARGET DETAILS (LAT/LONG)

Name	TVD	+N/-S	+E/-W	Northing	Easting	Latitude	Longitude
ROSS 8-60 18-7-3 BPI	6432.0	435.0	-1303.7	452729.84	1029439.07	40° 39' 27.655 N 104° 8' 22.722 W	
ROSS 8-60 18-7-3 EPI	6432.0	9019.9	-1217.3	455346.61	1029425.13	40° 40' 52.486 N 104° 8' 21.606 W	
ROSS 8-60 18-7-3 BHL	6432.0	9170.1	-1216.5	455392.36	1029424.68	40° 40' 53.969 N 104° 8' 21.595 W	Point



Survey Report

Company:	Bison Oil & Gas II, LLC	Local Co-ordinate Reference:	Well ROSS 8-60 18-7-3
Project:	WELD COUNTY, COLORADO (NAD 83)	TVD Reference:	WELL @ 4953.0ft (Original Well Elev)
Site:	ROSS 8-60 18 SESW & SWSE SEC 18 T8N R60W 6th P.M.	MD Reference:	WELL @ 4953.0ft (Original Well Elev)
Well:	ROSS 8-60 18-7-3	North Reference:	True
Wellbore:	Wellbore #1	Survey Calculation Method:	Minimum Curvature
Design:	Design #1	Database:	EDM 5000.16 Single User Db

Project	WELD COUNTY, COLORADO (NAD 83),		
Map System:	US State Plane 1983	System Datum:	Mean Sea Level
Geo Datum:	North American Datum 1983		
Map Zone:	Colorado Northern Zone		

Site		ROSS 8-60 18 SESW & SWSE SEC 18 T8N R60W 6th P.M.			
Site Position:		Northing:		452,604.25 m	
From:		Easting:		1,029,881.06 m	
Position Uncertainty:		Slot Radius:		13.200 in	
Lat/Long				Latitude: 40° 39' 23.364 N	
				Longitude: 104° 8' 3.991 W	

Well		ROSS 8-60 18-7-3				
Well Position	+N/-S	0.0 ft	Northing:	452,603.37 m	Latitude:	40° 39' 23.357 N
	+E/-W	0.0 ft	Easting:	1,029,838.45 m	Longitude:	104° 8' 5.806 W
Position Uncertainty		0.0 ft	Wellhead Elevation:	ft	Ground Level:	4,949.7 ft
Grid Convergence:		0.88 °				

Wellbore	Wellbore #1				
Magnetics	Model Name	Sample Date	Declination (°)	Dip Angle (°)	Field Strength (nT)
	IGRF200510	12/31/2009	8.70	67.42	53,502.77546423

Planned Survey									
Measured Depth (ft)	Inclination (°)	Azimuth (°)	Vertical Depth (ft)	+N/-S (ft)	+E/-W (ft)	Vertical Section (ft)	Dogleg Rate (°/100ft)	Build Rate (°/100ft)	Turn Rate (°/100ft)
0.0	0.00	0.00	0.0	0.0	0.0	0.0	0.00	0.00	0.00
100.0	0.00	0.00	100.0	0.0	0.0	0.0	0.00	0.00	0.00
200.0	0.00	0.00	200.0	0.0	0.0	0.0	0.00	0.00	0.00
300.0	0.00	0.00	300.0	0.0	0.0	0.0	0.00	0.00	0.00
400.0	0.00	0.00	400.0	0.0	0.0	0.0	0.00	0.00	0.00
500.0	0.00	0.00	500.0	0.0	0.0	0.0	0.00	0.00	0.00
600.0	0.00	0.00	600.0	0.0	0.0	0.0	0.00	0.00	0.00
700.0	0.00	0.00	700.0	0.0	0.0	0.0	0.00	0.00	0.00
800.0	0.00	0.00	800.0	0.0	0.0	0.0	0.00	0.00	0.00
Start Build 1.50									
900.0	1.50	257.61	900.0	-0.3	-1.3	-0.1	1.50	1.50	0.00
1,000.0	3.00	257.61	999.9	-1.1	-5.1	-0.4	1.50	1.50	0.00
1,100.0	4.50	257.61	1,099.7	-2.5	-11.5	-1.0	1.50	1.50	0.00
1,200.0	6.00	257.61	1,199.3	-4.5	-20.4	-1.8	1.50	1.50	0.00
1,300.0	7.50	257.61	1,298.6	-7.0	-31.9	-2.8	1.50	1.50	0.00
1,400.0	9.00	257.61	1,397.5	-10.1	-45.9	-4.0	1.50	1.50	0.00
1,500.0	10.50	257.61	1,496.1	-13.7	-62.5	-5.4	1.50	1.50	0.00
1,600.0	12.00	257.61	1,594.2	-17.9	-81.5	-7.0	1.50	1.50	0.00
1,700.0	13.50	257.61	1,691.7	-22.6	-103.1	-8.9	1.50	1.50	0.00
1,800.0	15.00	257.61	1,788.6	-27.9	-127.1	-11.0	1.50	1.50	0.00
1,900.0	16.50	257.61	1,884.9	-33.7	-153.6	-13.2	1.50	1.50	0.00
2,000.0	18.00	257.61	1,980.4	-40.1	-182.6	-15.7	1.50	1.50	0.00

Survey Report

Company:	Bison Oil & Gas II, LLC	Local Co-ordinate Reference:	Well ROSS 8-60 18-7-3
Project:	WELD COUNTY, COLORADO (NAD 83)	TVD Reference:	WELL @ 4953.0ft (Original Well Elev)
Site:	ROSS 8-60 18 SESW & SWSE SEC 18 T8N R60W 6th P.M.	MD Reference:	WELL @ 4953.0ft (Original Well Elev)
Well:	ROSS 8-60 18-7-3	North Reference:	True
Wellbore:	Wellbore #1	Survey Calculation Method:	Minimum Curvature
Design:	Design #1	Database:	EDM 5000.16 Single User Db

Planned Survey

Measured Depth (ft)	Inclination (°)	Azimuth (°)	Vertical Depth (ft)	+N/-S (ft)	+E/-W (ft)	Vertical Section (ft)	Dogleg Rate (°/100ft)	Build Rate (°/100ft)	Turn Rate (°/100ft)
2,100.0	19.50	257.61	2,075.0	-47.0	-214.0	-18.5	1.50	1.50	0.00
2,126.6	19.90	257.61	2,100.1	-48.9	-222.8	-19.2	1.50	1.50	0.00
Start 2614.9 hold at 2126.6 MD									
2,200.0	19.90	257.61	2,169.1	-54.3	-247.2	-21.3	0.00	0.00	0.00
2,300.0	19.90	257.61	2,263.1	-61.6	-280.4	-24.2	0.00	0.00	0.00
2,400.0	19.90	257.61	2,357.2	-68.9	-313.6	-27.0	0.00	0.00	0.00
2,500.0	19.90	257.61	2,451.2	-76.2	-346.9	-29.9	0.00	0.00	0.00
2,600.0	19.90	257.61	2,545.2	-83.5	-380.1	-32.8	0.00	0.00	0.00
2,700.0	19.90	257.61	2,639.3	-90.8	-413.4	-35.6	0.00	0.00	0.00
2,800.0	19.90	257.61	2,733.3	-98.1	-446.6	-38.5	0.00	0.00	0.00
2,900.0	19.90	257.61	2,827.3	-105.4	-479.9	-41.4	0.00	0.00	0.00
3,000.0	19.90	257.61	2,921.3	-112.7	-513.1	-44.2	0.00	0.00	0.00
3,100.0	19.90	257.61	3,015.4	-120.0	-546.3	-47.1	0.00	0.00	0.00
3,200.0	19.90	257.61	3,109.4	-127.3	-579.6	-50.0	0.00	0.00	0.00
3,300.0	19.90	257.61	3,203.4	-134.6	-612.8	-52.8	0.00	0.00	0.00
3,400.0	19.90	257.61	3,297.5	-141.9	-646.1	-55.7	0.00	0.00	0.00
3,500.0	19.90	257.61	3,391.5	-149.2	-679.3	-58.6	0.00	0.00	0.00
3,600.0	19.90	257.61	3,485.5	-156.5	-712.6	-61.4	0.00	0.00	0.00
3,700.0	19.90	257.61	3,579.5	-163.8	-745.8	-64.3	0.00	0.00	0.00
3,800.0	19.90	257.61	3,673.6	-171.1	-779.1	-67.2	0.00	0.00	0.00
3,900.0	19.90	257.61	3,767.6	-178.4	-812.3	-70.0	0.00	0.00	0.00
4,000.0	19.90	257.61	3,861.6	-185.7	-845.5	-72.9	0.00	0.00	0.00
4,100.0	19.90	257.61	3,955.7	-193.0	-878.8	-75.8	0.00	0.00	0.00
4,200.0	19.90	257.61	4,049.7	-200.3	-912.0	-78.6	0.00	0.00	0.00
4,300.0	19.90	257.61	4,143.7	-207.6	-945.3	-81.5	0.00	0.00	0.00
4,400.0	19.90	257.61	4,237.8	-214.9	-978.5	-84.4	0.00	0.00	0.00
4,500.0	19.90	257.61	4,331.8	-222.2	-1,011.8	-87.2	0.00	0.00	0.00
4,600.0	19.90	257.61	4,425.8	-229.5	-1,045.0	-90.1	0.00	0.00	0.00
4,700.0	19.90	257.61	4,519.8	-236.8	-1,078.2	-93.0	0.00	0.00	0.00
4,741.5	19.90	257.61	4,558.9	-239.9	-1,092.1	-94.2	0.00	0.00	0.00
Start Drop -1.50									
4,800.0	19.02	257.61	4,614.0	-244.0	-1,111.1	-95.8	1.50	-1.50	0.00
4,900.0	17.52	257.61	4,709.0	-250.8	-1,141.7	-98.4	1.50	-1.50	0.00
5,000.0	16.02	257.61	4,804.7	-257.0	-1,169.9	-100.9	1.50	-1.50	0.00
5,100.0	14.52	257.61	4,901.2	-262.6	-1,195.6	-103.1	1.50	-1.50	0.00
5,200.0	13.02	257.61	4,998.3	-267.7	-1,218.9	-105.1	1.50	-1.50	0.00
5,300.0	11.52	257.61	5,096.0	-272.3	-1,239.6	-106.9	1.50	-1.50	0.00
5,400.0	10.02	257.61	5,194.3	-276.3	-1,257.9	-108.5	1.50	-1.50	0.00
5,500.0	8.52	257.61	5,292.9	-279.7	-1,273.6	-109.8	1.50	-1.50	0.00
5,600.0	7.02	257.61	5,392.0	-282.6	-1,286.8	-111.0	1.50	-1.50	0.00
5,700.0	5.52	257.61	5,491.4	-285.0	-1,297.5	-111.9	1.50	-1.50	0.00
5,800.0	4.02	257.61	5,591.1	-286.8	-1,305.6	-112.6	1.50	-1.50	0.00
5,900.0	2.52	257.61	5,690.9	-288.0	-1,311.2	-113.1	1.50	-1.50	0.00

Survey Report

Company:	Bison Oil & Gas II, LLC	Local Co-ordinate Reference:	Well ROSS 8-60 18-7-3
Project:	WELD COUNTY, COLORADO (NAD 83)	TVD Reference:	WELL @ 4953.0ft (Original Well Elev)
Site:	ROSS 8-60 18 SESW & SWSE SEC 18 T8N R60W 6th P.M.	MD Reference:	WELL @ 4953.0ft (Original Well Elev)
Well:	ROSS 8-60 18-7-3	North Reference:	True
Wellbore:	Wellbore #1	Survey Calculation Method:	Minimum Curvature
Design:	Design #1	Database:	EDM 5000.16 Single User Db

Planned Survey

Measured Depth (ft)	Inclination (°)	Azimuth (°)	Vertical Depth (ft)	+N/-S (ft)	+E/-W (ft)	Vertical Section (ft)	Dogleg Rate (°/100ft)	Build Rate (°/100ft)	Turn Rate (°/100ft)
6,000.0	1.02	257.61	5,790.9	-288.7	-1,314.2	-113.3	1.50	-1.50	0.00
6,068.1	0.00	0.00	5,859.0	-288.8	-1,314.8	-113.4	1.50	-1.50	0.00
Start Build 10.00									
6,100.0	3.19	0.88	5,890.8	-287.9	-1,314.8	-112.5	10.00	10.00	0.00
6,200.0	13.19	0.88	5,989.7	-273.7	-1,314.6	-98.4	10.00	10.00	0.00
6,300.0	23.19	0.88	6,084.6	-242.5	-1,314.1	-67.6	10.00	10.00	0.00
6,400.0	33.19	0.88	6,172.6	-195.4	-1,313.4	-20.9	10.00	10.00	0.00
6,500.0	43.19	0.88	6,251.1	-133.6	-1,312.4	40.1	10.00	10.00	0.00
6,600.0	53.19	0.88	6,317.7	-59.2	-1,311.3	113.8	10.00	10.00	0.00
6,700.0	63.19	0.88	6,370.3	25.7	-1,310.0	197.7	10.00	10.00	0.00
6,800.0	73.19	0.88	6,407.5	118.4	-1,308.6	289.4	10.00	10.00	0.00
6,900.0	83.19	0.88	6,427.9	216.1	-1,307.1	386.1	10.00	10.00	0.00
6,968.1	90.00	0.88	6,432.0	284.1	-1,306.1	453.4	10.00	10.00	0.00
Start DLS 0.02 TFO 180.00									
7,000.0	89.99	0.88	6,432.0	315.9	-1,305.6	484.9	0.02	-0.02	0.00
7,100.0	89.97	0.88	6,432.0	415.9	-1,304.0	583.8	0.02	-0.02	0.00
7,119.1	89.97	0.88	6,432.0	435.0	-1,303.7	602.7	0.02	-0.02	0.00
Start DLS 0.01 TFO -83.88 - ROSS 8-60 18-7-3 BPI									
7,200.0	89.97	0.87	6,432.0	515.9	-1,302.5	682.7	0.01	0.00	-0.01
7,300.0	89.97	0.86	6,432.1	615.9	-1,301.0	781.7	0.01	0.00	-0.01
7,400.0	89.97	0.86	6,432.2	715.9	-1,299.5	880.6	0.01	0.00	-0.01
7,500.0	89.97	0.85	6,432.2	815.9	-1,298.0	979.5	0.01	0.00	-0.01
7,600.0	89.97	0.84	6,432.3	915.9	-1,296.5	1,078.4	0.01	0.00	-0.01
7,700.0	89.97	0.84	6,432.3	1,015.9	-1,295.1	1,177.4	0.01	0.00	-0.01
7,800.0	89.97	0.83	6,432.4	1,115.9	-1,293.6	1,276.3	0.01	0.00	-0.01
7,900.0	89.97	0.82	6,432.4	1,215.8	-1,292.2	1,375.2	0.01	0.00	-0.01
8,000.0	89.97	0.81	6,432.4	1,315.8	-1,290.8	1,474.2	0.01	0.00	-0.01
8,100.0	89.98	0.81	6,432.5	1,415.8	-1,289.3	1,573.1	0.01	0.00	-0.01
8,200.0	89.98	0.80	6,432.5	1,515.8	-1,287.9	1,672.0	0.01	0.00	-0.01
8,300.0	89.98	0.79	6,432.6	1,615.8	-1,286.6	1,771.0	0.01	0.00	-0.01
8,400.0	89.98	0.79	6,432.6	1,715.8	-1,285.2	1,869.9	0.01	0.00	-0.01
8,500.0	89.98	0.78	6,432.6	1,815.8	-1,283.8	1,968.9	0.01	0.00	-0.01
8,600.0	89.98	0.77	6,432.7	1,915.8	-1,282.5	2,067.8	0.01	0.00	-0.01
8,700.0	89.98	0.77	6,432.7	2,015.8	-1,281.1	2,166.7	0.01	0.00	-0.01
8,800.0	89.98	0.76	6,432.8	2,115.8	-1,279.8	2,265.7	0.01	0.00	-0.01
8,900.0	89.98	0.75	6,432.8	2,215.8	-1,278.5	2,364.6	0.01	0.00	-0.01
9,000.0	89.98	0.74	6,432.8	2,315.7	-1,277.2	2,463.6	0.01	0.00	-0.01
9,100.0	89.98	0.74	6,432.9	2,415.7	-1,275.9	2,562.6	0.01	0.00	-0.01
9,200.0	89.98	0.73	6,432.9	2,515.7	-1,274.6	2,661.5	0.01	0.00	-0.01
9,300.0	89.98	0.72	6,432.9	2,615.7	-1,273.3	2,760.5	0.01	0.00	-0.01
9,400.0	89.98	0.72	6,432.9	2,715.7	-1,272.1	2,859.4	0.01	0.00	-0.01
9,500.0	89.99	0.71	6,433.0	2,815.7	-1,270.8	2,958.4	0.01	0.00	-0.01
9,600.0	89.99	0.70	6,433.0	2,915.7	-1,269.6	3,057.3	0.01	0.00	-0.01

Survey Report

Company:	Bison Oil & Gas II, LLC	Local Co-ordinate Reference:	Well ROSS 8-60 18-7-3
Project:	WELD COUNTY, COLORADO (NAD 83)	TVD Reference:	WELL @ 4953.0ft (Original Well Elev)
Site:	ROSS 8-60 18 SESW & SWSE SEC 18 T8N R60W 6th P.M.	MD Reference:	WELL @ 4953.0ft (Original Well Elev)
Well:	ROSS 8-60 18-7-3	North Reference:	True
Wellbore:	Wellbore #1	Survey Calculation Method:	Minimum Curvature
Design:	Design #1	Database:	EDM 5000.16 Single User Db

Planned Survey

Measured Depth (ft)	Inclination (°)	Azimuth (°)	Vertical Depth (ft)	+N/-S (ft)	+E/-W (ft)	Vertical Section (ft)	Dogleg Rate (°/100ft)	Build Rate (°/100ft)	Turn Rate (°/100ft)
9,700.0	89.99	0.70	6,433.0	3,015.7	-1,268.4	3,156.3	0.01	0.00	-0.01
9,800.0	89.99	0.69	6,433.0	3,115.7	-1,267.2	3,255.3	0.01	0.00	-0.01
9,900.0	89.99	0.68	6,433.1	3,215.7	-1,266.0	3,354.2	0.01	0.00	-0.01
10,000.0	89.99	0.68	6,433.1	3,315.7	-1,264.8	3,453.2	0.01	0.00	-0.01
10,100.0	89.99	0.67	6,433.1	3,415.7	-1,263.6	3,552.2	0.01	0.00	-0.01
10,200.0	89.99	0.66	6,433.1	3,515.7	-1,262.4	3,651.1	0.01	0.00	-0.01
10,300.0	89.99	0.65	6,433.1	3,615.6	-1,261.3	3,750.1	0.01	0.00	-0.01
10,400.0	89.99	0.65	6,433.1	3,715.6	-1,260.2	3,849.1	0.01	0.00	-0.01
10,500.0	89.99	0.64	6,433.1	3,815.6	-1,259.0	3,948.1	0.01	0.00	-0.01
10,600.0	89.99	0.63	6,433.2	3,915.6	-1,257.9	4,047.1	0.01	0.00	-0.01
10,700.0	89.99	0.63	6,433.2	4,015.6	-1,256.8	4,146.0	0.01	0.00	-0.01
10,800.0	90.00	0.62	6,433.2	4,115.6	-1,255.7	4,245.0	0.01	0.00	-0.01
10,900.0	90.00	0.61	6,433.2	4,215.6	-1,254.7	4,344.0	0.01	0.00	-0.01
11,000.0	90.00	0.61	6,433.2	4,315.6	-1,253.6	4,443.0	0.01	0.00	-0.01
11,100.0	90.00	0.60	6,433.2	4,415.6	-1,252.5	4,542.0	0.01	0.00	-0.01
11,200.0	90.00	0.59	6,433.2	4,515.6	-1,251.5	4,641.0	0.01	0.00	-0.01
11,300.0	90.00	0.58	6,433.2	4,615.6	-1,250.5	4,740.0	0.01	0.00	-0.01
11,400.0	90.00	0.58	6,433.2	4,715.6	-1,249.5	4,838.9	0.01	0.00	-0.01
11,500.0	90.00	0.57	6,433.2	4,815.6	-1,248.5	4,937.9	0.01	0.00	-0.01
11,600.0	90.00	0.56	6,433.2	4,915.6	-1,247.5	5,036.9	0.01	0.00	-0.01
11,700.0	90.00	0.56	6,433.2	5,015.6	-1,246.5	5,135.9	0.01	0.00	-0.01
11,800.0	90.00	0.55	6,433.2	5,115.6	-1,245.5	5,234.9	0.01	0.00	-0.01
11,900.0	90.00	0.54	6,433.2	5,215.6	-1,244.6	5,333.9	0.01	0.00	-0.01
12,000.0	90.00	0.54	6,433.2	5,315.6	-1,243.6	5,432.9	0.01	0.00	-0.01
12,100.0	90.01	0.53	6,433.2	5,415.6	-1,242.7	5,531.9	0.01	0.00	-0.01
12,200.0	90.01	0.52	6,433.2	5,515.5	-1,241.8	5,631.0	0.01	0.00	-0.01
12,300.0	90.01	0.52	6,433.1	5,615.5	-1,240.9	5,730.0	0.01	0.00	-0.01
12,400.0	90.01	0.51	6,433.1	5,715.5	-1,240.0	5,829.0	0.01	0.00	-0.01
12,500.0	90.01	0.50	6,433.1	5,815.5	-1,239.1	5,928.0	0.01	0.00	-0.01
12,600.0	90.01	0.49	6,433.1	5,915.5	-1,238.2	6,027.0	0.01	0.00	-0.01
12,700.0	90.01	0.49	6,433.1	6,015.5	-1,237.4	6,126.0	0.01	0.00	-0.01
12,800.0	90.01	0.48	6,433.1	6,115.5	-1,236.5	6,225.0	0.01	0.00	-0.01
12,900.0	90.01	0.47	6,433.1	6,215.5	-1,235.7	6,324.0	0.01	0.00	-0.01
13,000.0	90.01	0.47	6,433.0	6,315.5	-1,234.9	6,423.1	0.01	0.00	-0.01
13,100.0	90.01	0.46	6,433.0	6,415.5	-1,234.1	6,522.1	0.01	0.00	-0.01
13,200.0	90.01	0.45	6,433.0	6,515.5	-1,233.3	6,621.1	0.01	0.00	-0.01
13,300.0	90.01	0.45	6,433.0	6,615.5	-1,232.5	6,720.1	0.01	0.00	-0.01
13,400.0	90.01	0.44	6,432.9	6,715.5	-1,231.7	6,819.2	0.01	0.00	-0.01
13,500.0	90.02	0.43	6,432.9	6,815.5	-1,231.0	6,918.2	0.01	0.00	-0.01
13,600.0	90.02	0.42	6,432.9	6,915.5	-1,230.2	7,017.2	0.01	0.00	-0.01
13,700.0	90.02	0.42	6,432.9	7,015.5	-1,229.5	7,116.3	0.01	0.00	-0.01
13,800.0	90.02	0.41	6,432.8	7,115.5	-1,228.8	7,215.3	0.01	0.00	-0.01
13,900.0	90.02	0.40	6,432.8	7,215.5	-1,228.1	7,314.3	0.01	0.00	-0.01

Survey Report

Company:	Bison Oil & Gas II, LLC	Local Co-ordinate Reference:	Well ROSS 8-60 18-7-3
Project:	WELD COUNTY, COLORADO (NAD 83)	TVD Reference:	WELL @ 4953.0ft (Original Well Elev)
Site:	ROSS 8-60 18 SESW & SWSE SEC 18 T8N R60W 6th P.M.	MD Reference:	WELL @ 4953.0ft (Original Well Elev)
Well:	ROSS 8-60 18-7-3	North Reference:	True
Wellbore:	Wellbore #1	Survey Calculation Method:	Minimum Curvature
Design:	Design #1	Database:	EDM 5000.16 Single User Db

Planned Survey

Measured Depth (ft)	Inclination (°)	Azimuth (°)	Vertical Depth (ft)	+N/-S (ft)	+E/-W (ft)	Vertical Section (ft)	Dogleg Rate (°/100ft)	Build Rate (°/100ft)	Turn Rate (°/100ft)
14,000.0	90.02	0.40	6,432.8	7,315.5	-1,227.4	7,413.4	0.01	0.00	-0.01
14,100.0	90.02	0.39	6,432.7	7,415.5	-1,226.7	7,512.4	0.01	0.00	-0.01
14,200.0	90.02	0.38	6,432.7	7,515.5	-1,226.0	7,611.4	0.01	0.00	-0.01
14,300.0	90.02	0.38	6,432.7	7,615.5	-1,225.3	7,710.5	0.01	0.00	-0.01
14,400.0	90.02	0.37	6,432.6	7,715.5	-1,224.7	7,809.5	0.01	0.00	-0.01
14,500.0	90.02	0.36	6,432.6	7,815.5	-1,224.0	7,908.6	0.01	0.00	-0.01
14,600.0	90.02	0.36	6,432.5	7,915.5	-1,223.4	8,007.6	0.01	0.00	-0.01
14,700.0	90.02	0.35	6,432.5	8,015.5	-1,222.8	8,106.7	0.01	0.00	-0.01
14,800.0	90.03	0.34	6,432.5	8,115.5	-1,222.2	8,205.7	0.01	0.00	-0.01
14,900.0	90.03	0.33	6,432.4	8,215.5	-1,221.6	8,304.8	0.01	0.00	-0.01
15,000.0	90.03	0.33	6,432.4	8,315.5	-1,221.0	8,403.8	0.01	0.00	-0.01
15,100.0	90.03	0.32	6,432.3	8,415.5	-1,220.5	8,502.9	0.01	0.00	-0.01
15,200.0	90.03	0.31	6,432.3	8,515.5	-1,219.9	8,601.9	0.01	0.00	-0.01
15,300.0	90.03	0.31	6,432.2	8,615.5	-1,219.4	8,701.0	0.01	0.00	-0.01
15,400.0	90.03	0.30	6,432.2	8,715.5	-1,218.8	8,800.1	0.01	0.00	-0.01
15,500.0	90.03	0.29	6,432.1	8,815.5	-1,218.3	8,899.1	0.01	0.00	-0.01
15,600.0	90.03	0.29	6,432.1	8,915.5	-1,217.8	8,998.2	0.01	0.00	-0.01
15,700.0	90.03	0.28	6,432.0	9,015.5	-1,217.3	9,097.2	0.01	0.00	-0.01
15,704.5	90.03	0.28	6,432.0	9,019.9	-1,217.3	9,101.7	0.01	0.00	-0.01
Start 150.1 hold at 15704.5 MD - ROSS 8-60 18-7-3 EPI									
15,800.0	90.03	0.28	6,431.9	9,115.5	-1,216.8	9,196.3	0.00	0.00	0.00
15,854.6	90.03	0.28	6,431.9	9,170.0	-1,216.6	9,250.4	0.00	0.00	0.00
TD at 15854.6 - ROSS 8-60 18-7-3 BHL									

Design Targets

Target Name - hit/miss target - Shape	Dip Angle (°)	Dip Dir. (°)	TVD (ft)	+N/-S (ft)	+E/-W (ft)	Northing (m)	Easting (m)	Latitude	Longitude
ROSS 8-60 18-7-3 EPI - plan hits target center - Point	0.00	0.88	6,432.0	9,019.9	-1,217.3	455,346.61	1,029,425.13	40° 40' 52.486 N	104° 8' 21.606 W
ROSS 8-60 18-7-3 BHL - plan misses target center by 0.1ft at 15854.6ft MD (6431.9 TVD, 9170.0 N, -1216.6 E) - Point	0.00	0.88	6,432.0	9,170.1	-1,216.5	455,392.36	1,029,424.69	40° 40' 53.969 N	104° 8' 21.595 W
ROSS 8-60 18-7-3 BPI - plan hits target center - Point	0.00	0.88	6,432.0	435.0	-1,303.7	452,729.84	1,029,439.07	40° 39' 27.655 N	104° 8' 22.722 W

Survey Report

Company:	Bison Oil & Gas II, LLC	Local Co-ordinate Reference:	Well ROSS 8-60 18-7-3
Project:	WELD COUNTY, COLORADO (NAD 83)	TVD Reference:	WELL @ 4953.0ft (Original Well Elev)
Site:	ROSS 8-60 18 SESW & SWSE SEC 18 T8N R60W 6th P.M.	MD Reference:	WELL @ 4953.0ft (Original Well Elev)
Well:	ROSS 8-60 18-7-3	North Reference:	True
Wellbore:	Wellbore #1	Survey Calculation Method:	Minimum Curvature
Design:	Design #1	Database:	EDM 5000.16 Single User Db

Formations						
Measured Depth (ft)	Vertical Depth (ft)	Name	Lithology	Dip (°)	Dip Direction (°)	
3,714.3	3,593.0	Parkman				
4,059.9	3,918.0	Sussex				
5,055.3	4,858.0	Shannon				
6,454.8	6,217.0	Sharon Springs Shale				
6,544.0	6,282.0	Niobrara Formation				
6,559.0	6,292.0	Niobrara A Chalk				
6,782.0	6,402.0	Niobrara B Chalk				
6,968.1	6,432.0	Niobrara B Landing Point				

Plan Annotations					
Measured Depth (ft)	Vertical Depth (ft)	Local Coordinates			
		+N/-S (ft)	+E/-W (ft)	Comment	
800	800	0	0	Start Build 1.50	
2127	2100	-49	-223	Start 2614.9 hold at 2126.6 MD	
4742	4559	-240	-1092	Start Drop -1.50	
6068	5859	-289	-1315	Start Build 10.00	
6968	6432	284	-1306	Start DLS 0.02 TFO 180.00	
7119	6432	435	-1304	Start DLS 0.01 TFO -83.88	
15,704	6432	9020	-1217	Start 150.1 hold at 15704.5 MD	
15,855	6432	9170	-1217	TD at 15854.6	