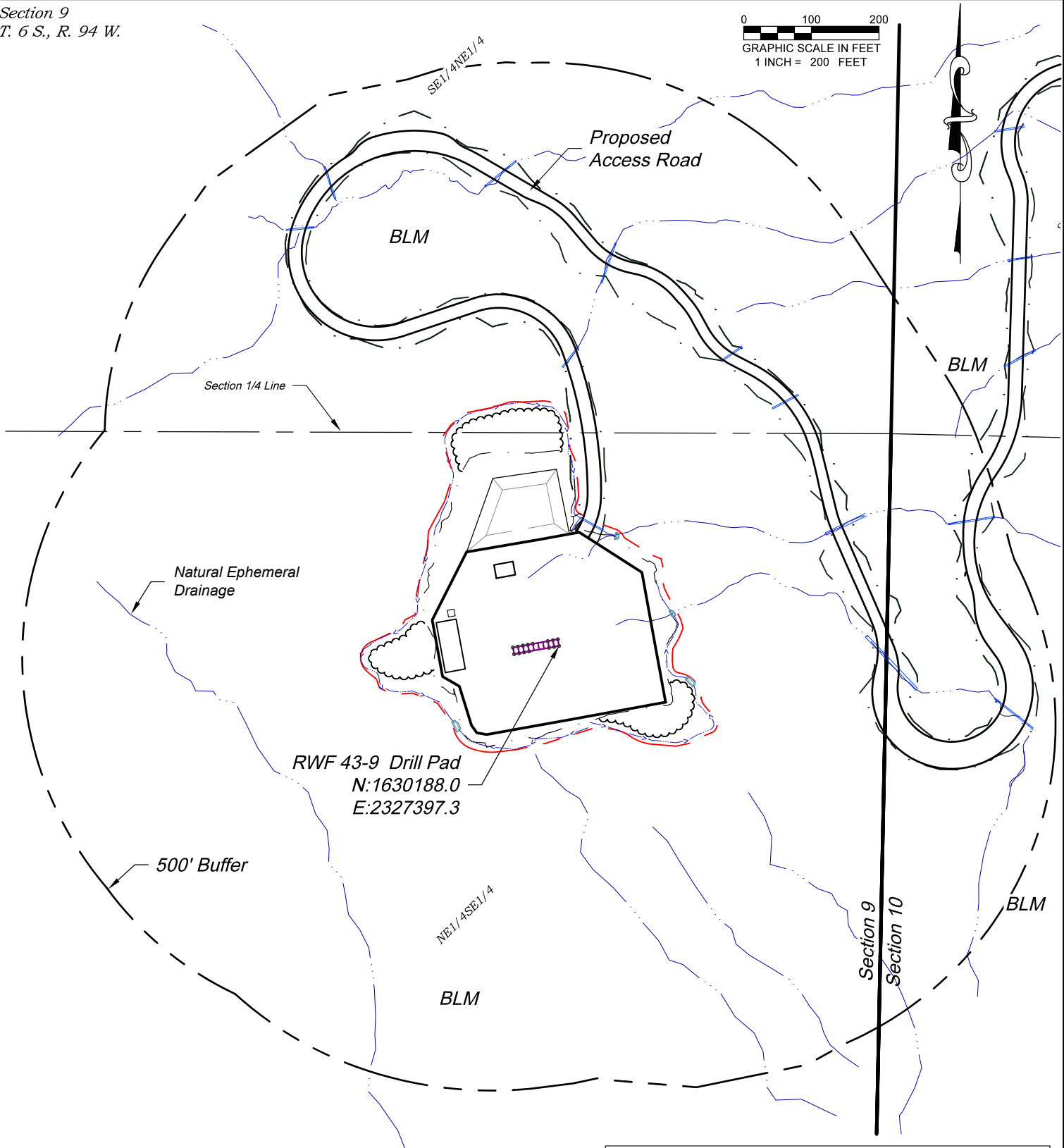


Section 9  
T. 6 S., R. 94 W.

0 100 200  
GRAPHIC SCALE IN FEET  
1 INCH = 200 FEET



CURRENT LAND USE		
<input type="checkbox"/> CROP LAND	<input checked="" type="checkbox"/> NON-CROP LAND	<input type="checkbox"/> SUBDIVIDED
<input type="checkbox"/> IRRIGATED	<input checked="" type="checkbox"/> RANGELAND	<input type="checkbox"/> INDUSTRIAL
<input type="checkbox"/> DRY LAND	<input type="checkbox"/> TIMBER	<input type="checkbox"/> COMMERCIAL
<input type="checkbox"/> IMPROVED PASTURE	<input type="checkbox"/> RECREATIONAL	<input type="checkbox"/> RESIDENTIAL
<input type="checkbox"/> HAY MEADOW	<input type="checkbox"/> OTHER (describe):	
<input type="checkbox"/> CRP		

136 East Third Street  
Rifle, Colorado 81650  
Ph. (970) 625-2720  
Fax (970) 625-2773



**BOOKCLIFF**  
Survey Services, Inc.

SCALE: 1" = 300'  
DATE: 3/18/20  
PLAT: 6 of 7  
PROJECT: TEP Valley  
DFT: cs



TEP Rocky Mountain LLC

RWF 43-9 Drill Pad - Plat 6  
LOCATION MAP

*Visible Improvements to Well Head (ft.)*

<i>Description</i>	<i>Building</i>	<i>Building Unit</i>	<i>High Occu. Building</i>	<i>DOAA</i>	<i>Public Road</i>	<i>Above Ground Utility</i>	<i>Railroad</i>	<i>Property Line</i>	<i>School Facility</i>	<i>School Property Line</i>	<i>Child Care Center</i>
RWF 43-9	>5280	>5280	>5280	>5280	>5280	>5280	>5280	91° 550	>5280	>5280	>5280
RWF 432-9	>5280	>5280	>5280	>5280	>5280	>5280	>5280	91° 543	>5280	>5280	>5280
RWF 32-9	>5280	>5280	>5280	>5280	>5280	>5280	>5280	91° 536	>5280	>5280	>5280
RWF 431-9	>5280	>5280	>5280	>5280	>5280	>5280	>5280	91° 528	>5280	>5280	>5280
RWF 344-9	>5280	>5280	>5280	>5280	>5280	>5280	>5280	91° 514	>5280	>5280	>5280
RWF 44-9	>5280	>5280	>5280	>5280	>5280	>5280	>5280	91° 506	>5280	>5280	>5280
RWF 443-9	>5280	>5280	>5280	>5280	>5280	>5280	>5280	91° 499	>5280	>5280	>5280
RWF 332-9	>5280	>5280	>5280	>5280	>5280	>5280	>5280	91° 545	>5280	>5280	>5280
RWF 531-9	>5280	>5280	>5280	>5280	>5280	>5280	>5280	91° 538	>5280	>5280	>5280
RWF 331-9	>5280	>5280	>5280	>5280	>5280	>5280	>5280	91° 530	>5280	>5280	>5280
RWF 31-9	>5280	>5280	>5280	>5280	>5280	>5280	>5280	91° 523	>5280	>5280	>5280
RWF 444-9	>5280	>5280	>5280	>5280	>5280	>5280	>5280	91° 516	>5280	>5280	>5280
RWF 543-9	>5280	>5280	>5280	>5280	>5280	>5280	>5280	91° 508	>5280	>5280	>5280
RWF 343-9	>5280	>5280	>5280	>5280	>5280	>5280	>5280	91° 501	>5280	>5280	>5280

*Production Equipment*

Seperators	>5280	>5280	>5280	>5280	>5280	>5280	>5280	91° 622	>5280	>5280	>5280
Tanks	>5280	>5280	>5280	>5280	>5280	>5280	>5280	91° 551	>5280	>5280	>5280

REVISED: 6/29/20



SCALE: NA  
DATE: 3/18/20  
SHEET: 6A of 7  
PROJECT: TEP Valley  
DFT: cs

**Construction Plan Prepared for:**



TEP Rocky Mountain LLC

*RWF 43-9 Drill Pad - Plat 6A*

*LOCATION TABLE*