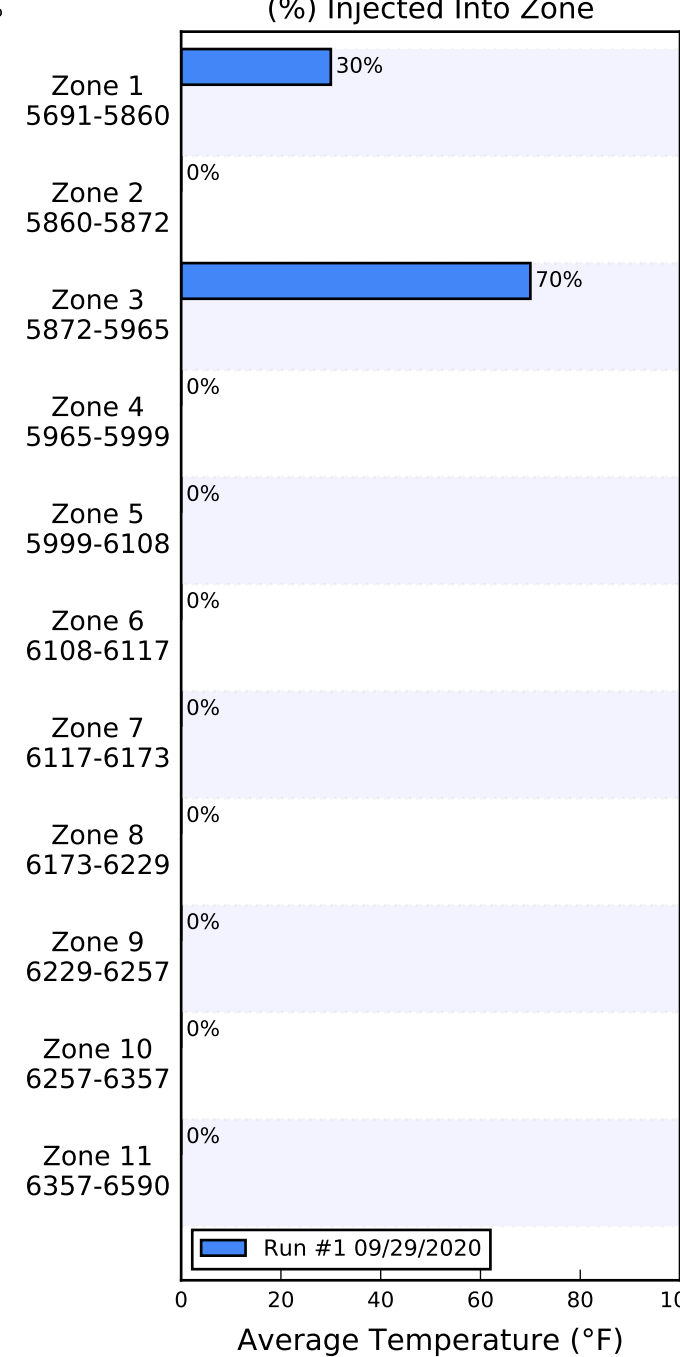
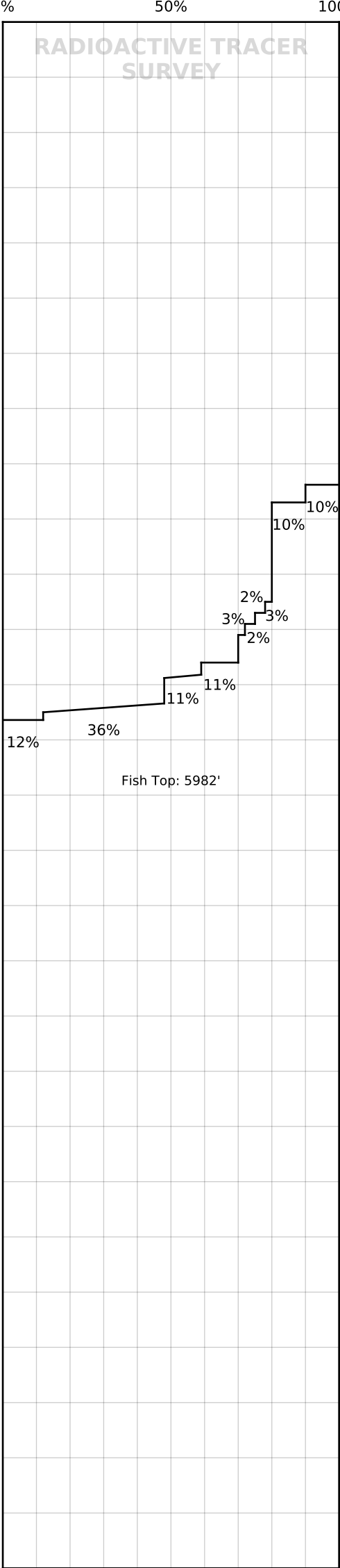
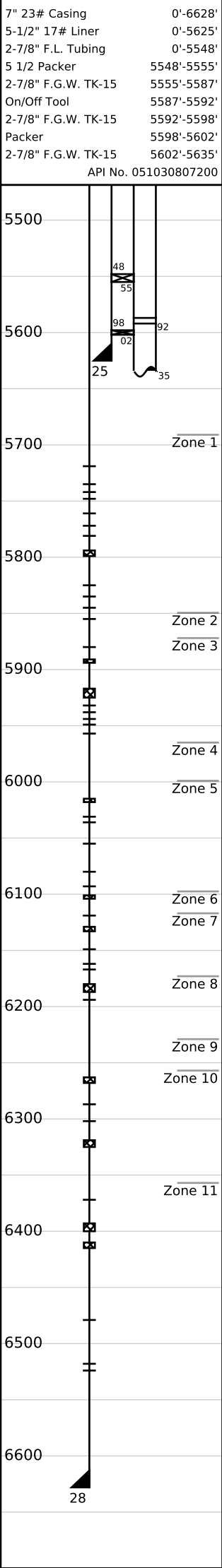




Well: Emerald 70X
(2522)
Field: RWSU

Survey Data		Remarks
Run No.1		R/A Tracer indicates top perf and packer O.K. Ran 1.75" G/R to 5743'. Note: Fish Top 5982'.
Survey Type: T-S-T	Surface Temp: 103.2 °F	
Date: 09/29/2020	BHT: 107.2 °F	
Metered Rate: N/A	TBG Pressure: 1400 PSI	
Measured Rate: 2639 B/D	CSG Pressure: 0 PSI	
Desired Rate: N/A	Pick Up: 5936' TDL	
Service Co: PLS	Inj. Fluid: H ₂ O	
		Recorded By: J.R. Hacking

Mechanical Information



	Run #1 09/29/2020		
Surface	103.2		
5691-5860	--		
5860-5872	--		
5872-5965	--		
TDL (5936)	107.2		
5965-5999	--		
5999-6108	--		
6108-6117	--		
6117-6173	--		
6173-6229	--		
6229-6257	--		
6257-6357	--		
6357-6590	--		
Rate (B/D)	2639		
Press (PSI)	1400		