

NEXTier**Job Summary**

Ticket Number

TN#

BCO-2009-0031

Ticket Date

9/18/2020

COUNTY	COMPANY	API Number
WELD (CO)	ENSIGN	0512312903
WELL NAME	RIG	JOB TYPE
PAULINE 5	Ensign 312	CM-P2A-PERM.
SURFACE WELL LOCATION	CJES Field Supervisor	CUSTOMER REP
40.415025 -104.577101	DANIEL MUNIZ	Matt McGraw
EMPLOYEES		

WELL PROFILE

Max Treating Pressure (psi):	Bottom Hole Static Temperature (°F):
Bottom Hole Circulating Temperature (°F):	Well Type:

Open Hole

1	Size (in)	TMD From (ft)	TMD to (ft)	TVD From (Ft)	TVD to (Ft)
	10	307	3000		
2	Size (in)	TMD From (ft)	TMD to (ft)	TVD From (Ft)	TVD to (Ft)

Casing/Tubing/Drill Pipe

Type	Size (in)	Weight (lb/ft)	Grade	TMD From (ft)	TMD to (ft)	TVD From (Ft)	TVD to (Ft)
Surface	8 5/8	24	J-55	0	307		
Type	Size (in)	Weight (lb/ft)	Grade	TMD From (ft)	TMD to (ft)	TVD From (Ft)	TVD to (Ft)
Type	Size (in)	Weight (lb/ft)	Grade	TMD From (ft)	TMD to (ft)	TVD From (Ft)	TVD to (Ft)

CEMENT DATA

Stage 1:	From Depth (ft):	3000	To Depth (ft):	2670
Type: Shoe Plugs	Volume (sacks):	100	Volume (bbls):	20.4
Cement & Additives:		Density (ppg)	Yield (ft³/sk)	Water Req.
100% G NEAT		15.8	1.15	5.00
Stage 2:	From Depth (ft):	1445	To Depth (ft):	1245
Type: Surface Plug	Volume (sacks):	90	Volume (bbls):	18.4
Cement & Additives:		Density (ppg)	Yield (ft³/sk)	Water Req.
100% G NEAT		15.8	1.15	5.00
Stage 3:	From Depth (ft):	1260	To Depth (ft):	SURFACE
Type: Top Off	Volume (sacks):	103	Volume (bbls):	21
Cement & Additives:		Density (ppg)	Yield (ft³/sk)	Water Req.
100% G NEAT		15.8	1.15	5.00
Stage 4:	From Depth (ft):		To Depth (ft):	
Type:	Volume (sacks):		Volume (bbls):	
Cement & Additives:		Density (ppg)	Yield (ft³/sk)	Water Req.

SUMMARY

Preflushes:	bbls of	Calculated Displacement (bbl):	Stage 1	Stage 2
	bbls of	Actual Displacement (bbl):		
	bbls of			
Total Preflush/Spacer Volume (bbl):		Plug Bump (Y/N):	Bump Pressure (psi):	
Total Slurry Volume (bbl):		Lost Returns (Y/N):	(if Y, when)	
Total Fluid Pumped				
Returns to Surface:				

Job Notes (fluids pumped / procedures / tools / etc.):

Job notes go here!

Customer Representative Signature:

Thank You For Using
NexTier Completion Solutions

Cement Job Log

NEXTier											
Customer:	ENSIGN				Date:	18-Sep-20		Serv. Supervisor:	DANIEL MUNIZ		
Cust. Rep.:	Matt McGraw				Ticket #:	BCO-2009-0031		Serv. Center:	Brighton - 3021		
Well Name:	PAULINE 5	RTS Date:	18-Sep-2020		API Well #:	0612312903		County:	WELD (CO)	State:	COLORADO
Well Type:	Oil	RTS Time:	11:00 AM		Rig:	Ensign 312		Type of Job:	CM-P2A-PERM.		
Left Yard:	Date: 18-Sep-20	Time: 10:00 AM	Left Loc.:	Date: 18-Sep-20	Time: 4:45 PM	Start Pump:	Date: 18-Sep-20	Time: 12:27 PM			
Arrived Loc.:	18-Sep-20	11:00 AM	Returned Yd.:	18-Sep-20		End Pump:	18-Sep-20	4:15 PM			
TIME	Rate	Csg. Press.	Tbg. Press.	Ann. Press.	Stg. Vol.	Cum. Vol.	Stage Num.	Stage Details			
	(bbl/min)	(psi)	(psi)	(psi)	(bbl)	(bbl)	Stage #				
10:00 AM								Left Yard or Current Location			
11:00 AM								ARRIVE ON LOCATION			
11:00 AM							1	SHOW UP ON LOCATION			
11:55 AM							1	SPOT IN EQUIPMENT, WE HAD ISSUES ENTERING INTO LOCATION			
12:15 PM							1	RIG UP			
12:23 PM							1	SAFETY MEETING			
12:27 PM							1	PRESSURE TEST 2,000 PSI			
12:30 PM	1.5	140					1	BRAKE CIRCULATION WITH 2 BBL H2O			
12:34 PM	3	500					1	SWITCH OVER TO CEMENT CLASS G @ 15.8 PPG			
12:41 PM	3	350					1	20.5 BBL TOTAL PUMPED = 100 SKS			
12:42 PM	3	10					1	DISPLACEMENT 8.8 BBL H2O			
12:47 PM							1	SHUT DOWN,			
12:50 PM							1	TURN OVER TO RIG.			
2:45 PM							1	2ND SQUEEZE PLUG			
2:47 PM	3	160					1	BRAKE CIRCULATION WITH 2 BBL H2O			
2:52 PM	3	250					1	STARTED PUMPING CEMENT CLASS G 15.8 PPG			
2:59 PM							1	SHUT DOWN AT 23.4 BBL OF CMT			
3:00 PM							1	STING OUT FROM RETAINER			
3:01 PM	3	80					1	START PUMPOING FOR TOP OUT TO SURFACE			
3:12 PM							1	SHUT DOWN AT 12.5 BBL (CMT BACK TO SURFACE)			
3:15 PM							1	TURN OVER TO RIG TO PULL TUBING			
3:50 PM	1	20					1	TOP OUT			
4:00 PM							1	WAITR FOR 10 MIN. FOR CMT DROP			
4:01 PM	1	20					1	TOP OUT			
4:15 PM							1	SHUT DOWN 21 BBL TOTAL PUMPED			
4:20 PM							1	WASH PUMPS AND LINES			
5:00 PM							1	RIG DOWN LEAVE LOCATION			
4:45 PM								LEFT LOCATION			
12:00 AM								ARRIVED BACK AT YARD OR NEXT LOCATION			
Comments/Special Customer Instructions											

NEXTTIER

NEXTier																			
Customer: ENSIGN						Date: 18-Sep-20				Serv. Supervisor: DANIEL MUNIZ									
Cust. Rep.: Matt McGraw						Ticket #: BCO-2009-0031				Serv. Center: Brighton - 3021									
Well Name: PAULINE 5						API Well #: 0512312903				County: WELD (CO)				State: COLORADO					
Well Type: Oil						Rig: Ensign 312				Type of Job: CM-P2A-PERM.									
Materials Furnished by NexTier																			
Plugs		Casing Hardware				Physical Slurry Properties													
						Sacks of Cement	Fluid Density (lb/gal)	Excess	Yield (cuft/sk)	Mix Water (gal/sk)	Fluid Volume (bbbls)	Mix Water (bbbls)							
Spacer - 5 bbl Fresh Water									-	-	-								
Squeeze 1 - Perfs @ 3,000' and 2,800'. L		100 % NCM-914				85	15.8		1.15	5.00	17.38	10							
Squeeze 2 - Perfs @ 1,445' and 1,245'. L		100 % NCM-914				85	15.8		1.15	5.00	17.38	10							
Surface Plug 1/2 - Recommend Splitting i		100 % NCM-914				50	15.8		1.15	5.00	10.22	6							
Surface Plug 2/2 - Recommend Splitting i		100 % NCM-914				50	15.8		1.15	5.00	10.22	6							
Extra Cement		100 % NCM-914				50	15.8		1.15	5.00	10.22	6							
									-	-									
									-	-									
									-	-									
Displacement Chemicals:																			
OPEN HOLE DATA					TUBULAR DATA														
10 in. O.H. 0 to 3,000 ft					4.5 in. 12.6#, (0 to 3,000 ft)				SIZE WEIGHT	THRD	DEPTH (ft)	GRADE	ID (in)	BURST (psi)	COLLAPSE (psi)				
Mix Cemt. Temperature *F	Lead Trmp.	Middle Temp.	Tail Temp.																
PREVIOUS CASING DATA					PERFORATED INTERVAL DATA					CASING EQUIPMENT DEPTHS									
					TOP	BTM	SPF	SIZE	SHOE	FLOAT	STAGE	ACP							
WELL FLUID		DISPLACEMENT FLUID			DIFF PRESS		CSG LIFT	MAX PRESS	Total Number of Runs				WATER ON LOC (bbl)						
TYPE	DENSITY	VOLUME	TYPE	DENSITY	(psi)	(psi)	(psi)												
Bumped Plug	Final Differential (psi)	Floats Held (Y/N)	PSI Left on Casing	Cement to Surface (bbl)	Top of Cement (ft)	Full Circ. During Job (Y/N)	Max Pump Pressure (psi)	Casing Rotation	Additional Hrs Charged (hrs)	Casing Recirculation	Rathole Length (ft)								
Comments/Special Customer Instructions:																			
							<div style="text-align: right; font-size: 1.2em; font-weight: bold;">DANIEL MUNIZ</div> <div style="text-align: right;">18-Sep-20</div>												
							<div style="text-align: center;">Service Supervisor Date</div>												

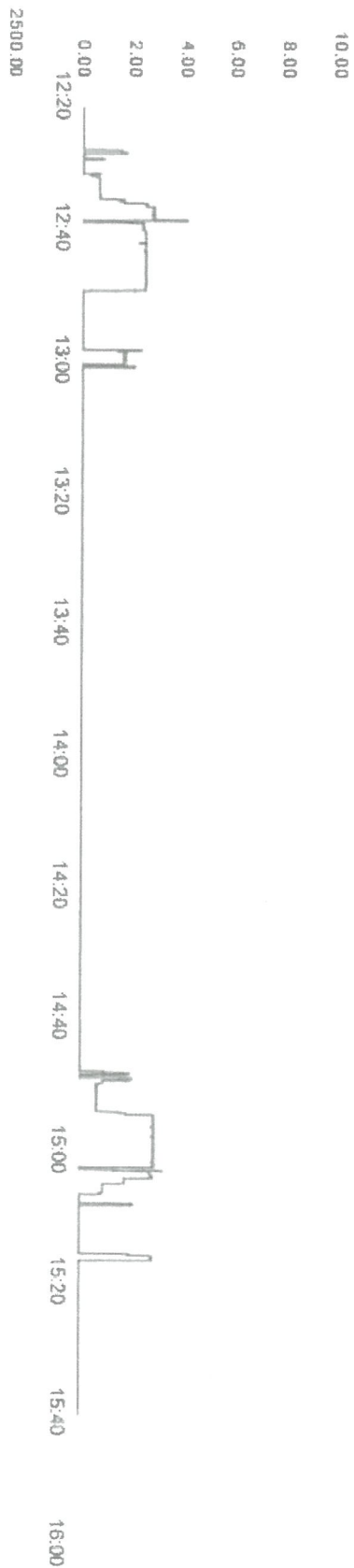
NEXTIER

Client
Ticket No. 20090031
Location WELD

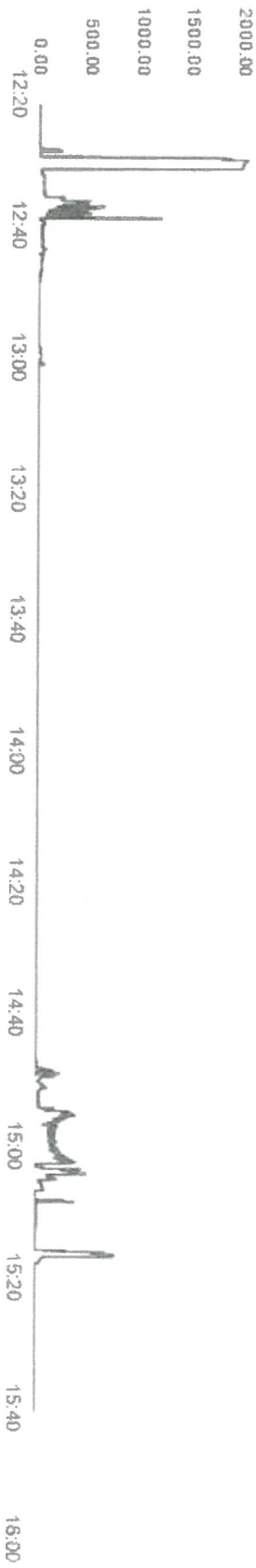
Client Rep
Well Name PAULINE 5
Job Type Cement Top Off

Supervisor
Unit No. 445070
Service District BRIGHTON CO.
Job Date 09/18/2020

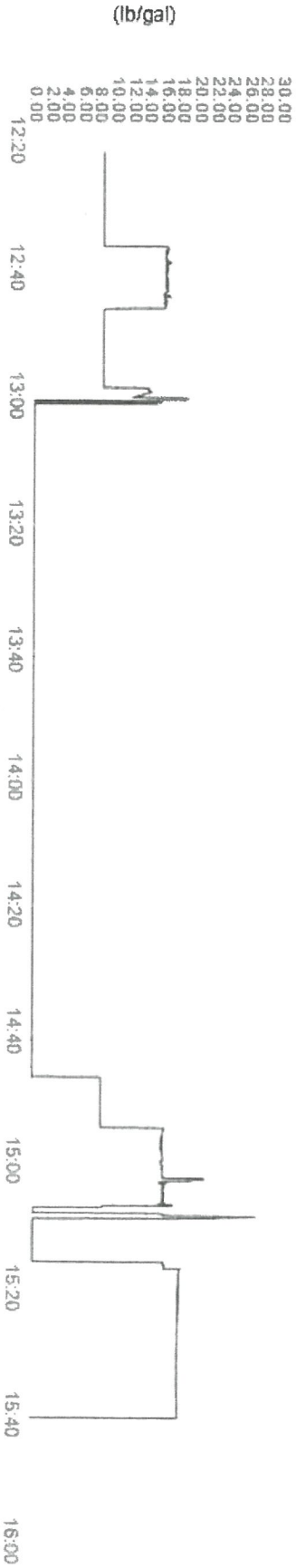
Unit 445070 Rate Total



Unit 445070 Pump Pressure



Unit 445070 Density



RMWS - Service Ticket & Invoice:

Rocky Mountain Wireline Service
2144 Hwy 6 S-50
Grand Junction, CO 81505
970-245-9828



Ticket Number

113063

Date

9/18/2020

Well

Pauline 5

Field

Wattenberg

County / State

Weld / Co

Services provided for:

ENSIGN WELL SERVICE
2154 Hwy 6 & 50
Grand Junction, Colorado 81505

Services ordered by:

Logan Hancock
(970) 712-4498
logan.hancock@ensignenergy.com

Job Data

Field Office

Johnstown- Line Truck #
CO 219

Crane #

Pickup
Truck #

Explosives Permit
#

92983

Crew Members

Dizmang, Stickley, Tsung

CSG Size

4.5

WT

11.6

Zero	Fluid	Level	RMWS TD	Corrected	To Agree	Dated	Consultant
GL/ KB	Water	Surface	3550		With		John Schmitt

Job Notes

Rig 312 USR0037580-2

Travel

Report To Shop	Arrive At Location	On Well	Off well
9/18/2020 6:30 AM MDT	9/18/2020 7:30 AM MDT	9/18/2020 8:30 PM MDT	9/18/2020 2:05 PM MDT

Depart Location	Return To Shop	Travel Notes
2:15 PM MDT	2:45 PM MDT	

Activity

Logging - Bid Work

Description	From	To	Units Used	Rate	Minimum	Amount
Ensign - CBL from 2,000' or less	3500		1.00 Units			\$0.00
Ran CBL from 3500' to surface						

Miscellaneous - Bid Work

Description	From	To	Units Used	Rate	Minimum	Amount
Ensign - CIRC @ 5,000' or less (CIRC NOT INCLUDED)	Set CIRC @ 1260'	1260	1.00 Units			\$0.00
Ensign - CIRC @ 5,000' or less (CIRC NOT INCLUDED)	Set CIRC @ 2815'	2815	1.00 Units			\$0.00

Perforating - Bid Work

Description	Stage	From	To	Plug Date	Units Used	Rate	Amount
Ensign - 4 1/2" or 5 1/2" Upper & Lower Sqz 3spf/1' @ 5,000' or less		1445	1245		1.00 Units		\$0.00
Shot lower gun @ 1445' upper gun @ 1245'							
Ensign - 4 1/2" or 5 1/2" Upper & Lower Sqz 3spf/1' @ 5,000' or less		3000	2800		1.00 Units		\$0.00
Shot lower gun @ 3000' upper gun @ 2800'							

Logging - Bid Work	\$0.00
Miscellaneous - Bid Work	\$0.00
Perforating - Bid Work	\$0.00
Total	\$0.00

Signatures