

**NEXTIER****Job Summary**

Ticket Number

TN#

BCO-2009-0034

Ticket Date

9/18/2020

COUNTY	COMPANY	API Number
WELD (CO)	ENSIGN	0512329968
WELL NAME	RIG	JOB TYPE
WALKER 13-10	Ensign 354	CM-P2A-PERM.
SURFACE WELL LOCATION	CJES Field Supervisor	CUSTOMER REP
40.49881 104.42975	JAVIER TREJO	Matt McGraw
EMPLOYEES		
TREJO		
JIMMY		
SERGIO S		

**WELL PROFILE**

Max Treating Pressure (psi):	1500	Bottom Hole Static Temperature (°F):	
Bottom Hole Circulating Temperature (°F):		Well Type:	OIL WELL

**Open Hole**

1	Size (in)	TMD From (ft)	TMD to (ft)	TVD From (ft)	TVD to (ft)
2	Size (in)	TMD From (ft)	TMD to (ft)	TVD From (ft)	TVD to (ft)

**Casing/Tubing/Drill Pipe**

Type	Size (in)	Weight (lb/ft)	Grade	TMD From (ft)	TMD to (ft)	TVD From (ft)	TVD to (ft)
PRODUCTION	4 1/2	10.5		0'	1660'		
TBG	2 3/8	4.7		0'	1660'		

**CEMENT DATA**

Stage 1:	From Depth (ft):	To Depth (ft):	Density (ppg)	Yield (ft³/sk)	Water Req.
Type: Shoe Plugs					
Volume (sacks):		Volume (bbls):			
Cement & Additives:					
CLASS G					
Stage 2:	From Depth (ft):	To Depth (ft):	Density (ppg)	Yield (ft³/sk)	Water Req.
Type: Surface Plug	1660'	0'	15.8	1.15	5.00
Volume (sacks):	122	Volume (bbls):	25		
Cement & Additives:					
CLASS G					
Stage 3:	From Depth (ft):	To Depth (ft):	Density (ppg)	Yield (ft³/sk)	Water Req.
Type: Top Off	188'	0'	15.8	1.15	5.00
Volume (sacks):	15	Volume (bbls):	3		
Cement & Additives:					
CLASS G					
Stage 4:	From Depth (ft):	To Depth (ft):	Density (ppg)	Yield (ft³/sk)	Water Req.
Type: SQZ	120'		15.8	1.15	5.00
Volume (sacks):	24	Volume (bbls):	5		
Cement & Additives:					
CLASS G					

**SUMMARY**

Preflushes:	5 bbls of Fresh Water	Calculated Displacement (bbl):	Stage 1	Stage 2
		Actual Displacement (bbl):		
Total Preflush/Spacer Volume (bbl):	32	Plug Bump (Y/N):		Bump Pressure (psi):
Total Slurry Volume (bbl):	37	Lost Returns (Y/N):		(if Y, when)
Total Fluid Pumped				
Returns to Surface:				

Job Notes (fluids pumped / procedures / tools / etc.):

TOPPED OFF CSG WITH 3 BBLS THEN SQUEEZED 5 BBLS INTO CSG PERFS 120'

Customer Representative Signature:

Thank You For Using

NextTier Completion Solutions

Cement Job Log

<div style="display: flex; align-items: center;"> <div> <b>Customer:</b> ENSIGN  <b>Cust. Rep.:</b> Matt McGraw  <b>Well Name:</b> WALKER 13-10  <b>Well Type:</b> Oil </div> <div> <b>Date:</b> 18-Sep-20  <b>Ticket #:</b> BCO-2009-0034  <b>API Well #:</b> 0512329968  <b>Rig:</b> Ensign 354 </div> <div> <b>Serv. Supervisor:</b> JAVIER TREJO  <b>Serv. Center:</b> Brighton - 3021  <b>County:</b> WELD (CO)  <b>State:</b> COLORADO  <b>Type of Job:</b> CM-P2A-PERM. </div> </div>									
<b>Left Yard:</b>		<b>Date:</b> 18-Sep-20		<b>Time:</b> 11:00 AM		<b>Left Loc.:</b> 18-Sep-20		<b>Time:</b> 3:00 PM	
<b>Arrived Loc.:</b>		<b>Date:</b> 18-Sep-20		<b>Time:</b> 12:00 PM		<b>Returned Yd.:</b> 18-Sep-20		<b>Time:</b> 4:00 PM	
<b>Start Pump:</b>		<b>Date:</b> 18-Sep-20		<b>Time:</b> 12:40 PM		<b>End Pump:</b>		<b>Date:</b> 18-Sep-20	
								<b>Time:</b> 1:44 PM	
TIME	Rate	Csg. Press.	Tbg. Press.	Ann. Press.	Stg. Vol.	Cum. Vol.	Stage Num.	Stage Details	
	(bbl/min)	(psi)	(psi)	(psi)	(bbl)	(bbl)	Stage #		
11:00 AM								Left Yard or Current Location	
12:00 PM								ARRIVE ON LOCATION	
12:00 PM							1	MEET & GREET REP	
12:05 PM							1	SAFETY MEETING/ RIG UP	
12:40 PM		2000			1.0 bbl	1.0 bbl	1	PRESSURE TEST LINE	
12:42 PM	25	50			5.0 bbl	6.0 bbl	1	PUMP 5 BBLS FW SPACER	
12:46 PM	2	127			25.0 bbl	31.0 bbl	1	MIX & PUMP TAIL CMT, #15.6, 122 SKS, 25 BBLS	
12:58 PM							1	SHUT DOWN. POOH (1660'-0')	
1:37 PM	1.5	17			3.0 bbl	34.0 bbl	1	TOP OUT WELL, 3 BBLS	
1:39 PM	1.5	20			5.0 bbl	39.0 bbl	1	SQUEEZE 5 BBLS OF CMT INTO PERFS	
1:44 PM							1	SHUT DOWN. WASH UP TO PIT	
2:00 PM							1	SAFETY MEETING/ RIG DOWN	
3:00 PM							1	LEAVE LOCATION	
3:00 PM	This entry is missing from job log							LEFT LOCATION	
4:00 PM								ARRIVED BACK AT YARD OR NEXT LOCATION	
Comments/Special Customer Instructions									

**NEXTIER**

18-Sep-20  
Date



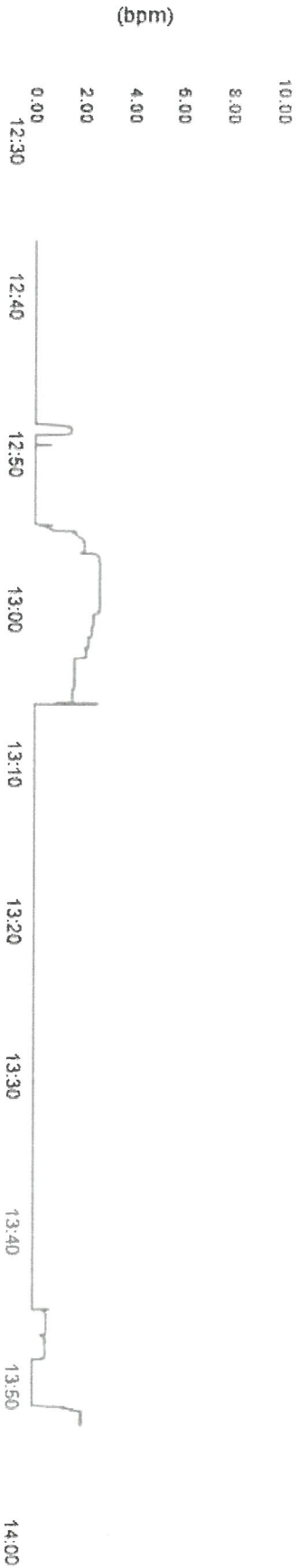
Client  
Ticket No. 20090034  
Location  
Comments

Client Rep  
Well Name  
Job Type  
Abandonment Plugs

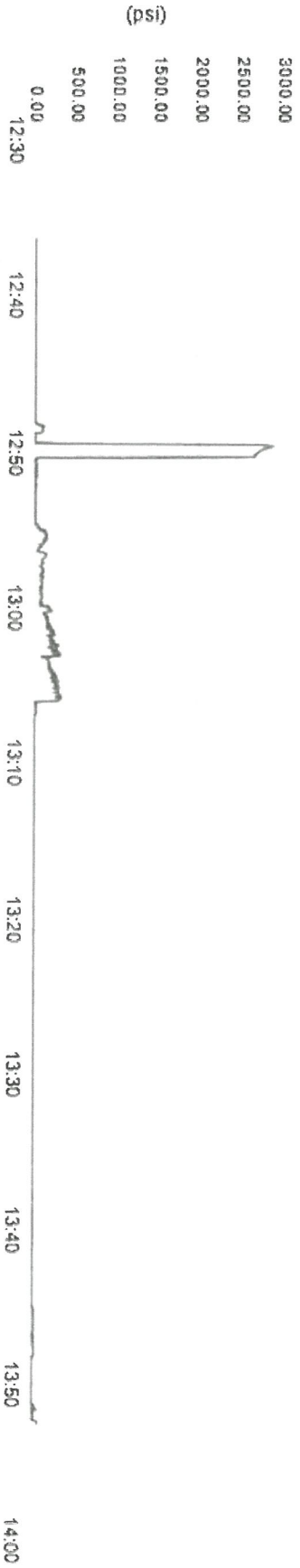
Supervisor  
Unit No.  
Service District  
Job Date

TREJO  
445084  
BRIGHTON  
09/18/2020

Unit 445084 Rate Total



Unit 445084 Pump Pressure



Unit 445084 Density





# RMWS - Service Ticket & Invoice:

Rocky Mountain Wireline Service  
2144 Hwy 6 & 50  
Grand Junction, CO 81505  
970-245-9828



Ticket Number

113068

Date

9/18/2020

Well

Walker 13-10

Field

Wattenberg

County / State

Weld / Colorado

## Services provided for:

ENSIGN WELL SERVICE  
2154 Hwy 6 & 50  
Grand Junction, Colorado 81505

## Services ordered by:

Logan Hancock  
(970)712-4498  
Logan.Hancock@ensignenergy.com

## Job Data

### Field Office

Johnstown-  
CO

Line Truck #  
222

Crane #

Pickup  
Truck #  
71

Explosives Permit  
#

### Crew Members

G. Graham, N. Wells, N. Hauptman

CSG Size

4.5

WT

10.5

Zero

GL W/KB 10'

Fluid

Water

Level

Surface

RMWS TD

6715

Corrected

To Agree  
With

Dated

Consultant

Matt McGraw

## Job Notes

## Travel

### Report To Shop

9/18/2020 6:30 AM MDT

### Arrive At Location

9/18/2020 7:50 AM MDT

### On Well

### Off well

### Depart Location

### Return To Shop

### Travel Notes

## Activity

### Logging - Bid Work

Description	From	To	Units Used	Rate	Minimum	Amount
Ensign - CBL from 2,000' or less	0	500	1.00 Units			\$0.00

### Miscellaneous - Bid Work

Description	From	To	Units Used	Rate	Minimum	Amount
Ensign - 4 1/2" 10K CIBP @ 5,000' +		6694	1.00 Units			\$0.00
Ensign - 4 1/2" 10K CIBP @ 5,000' +		6408	1.00 Units			\$0.00
Ensign - 4 1/2" 10K CIBP @ 5,000' or less		2800	1.00 Units			\$0.00
Ensign - Dump Bail 2 SX Cement (STANDARD)		6406	1.00 Units			\$0.00
Ensign - Dump Bail 2 SX Cement (STANDARD)		2798	1.00 Units			\$0.00
Ensign - Dump Bail 2 SX Cement (STANDARD)		6692	1.00 Units			\$0.00

### Perforating - Bid Work

Description	Stage	From	To	Plug Date	Units Used	Rate	Amount
Ensign - 4 1/2" or 5 1/2" Single set Sqz 3spf/1' @ 5,000' or less		120	122		1.00 Units		\$0.00

Logging - Bid Work \$0.00

Miscellaneous - Bid Work \$0.00

Perforating - Bid Work \$0.00

Total \$0.00

## Signatures