

NEXTIER**Job Summary**

Ticket Number

Ticket Date

TN#

BCO-2009-0029

9/16/2020

COUNTY	COMPANY	API Number
WELD (CO)	ENSIGN	0512329967
WELL NAME	RIG	JOB TYPE
WALKER 24-10	ENSIGN 354	CM-P2A-PERM.
SURFACE WELL LOCATION	CJES Field Supervisor	CUSTOMER REP
40.49581 104.42528	JAVIER TREJO	Mat McGraw
EMPLOYEES		
TREJO J	SEGIO S	
JIMMY		
TROY		

WELL PROFILE

Max Treating Pressure (psi):	1500	Bottom Hole Static Temperature (°F):	
Bottom Hole Circulating Temperature (°F):		Well Type:	OIL WELL

Open Hole

1	Size (in)	TMD From (ft)	TMD to (ft)	TVD From (Ft)	TVD to (Ft)
	4 1/5 #10.5	0	1670		
2	Size (in)	TMD From (ft)	TMD to (ft)	TVD From (Ft)	TVD to (Ft)

Casing/Tubing/Drill Pipe

Type	Size (in)	Weight (lb/ft)	Grade	TMD From (ft)	TMD to (ft)	TVD From (Ft)	TVD to (Ft)
TBG	2 3/8	4.7		0'	1620'		
Type	Size (in)	Weight (lb/ft)	Grade	TMD From (ft)	TMD to (ft)	TVD From (Ft)	TVD to (Ft)
Type	Size (in)	Weight (lb/ft)	Grade	TMD From (ft)	TMD to (ft)	TVD From (Ft)	TVD to (Ft)

CEMENT DATA

Stage 1:	From Depth (ft):		To Depth (ft):	
Type: Shoe Plugs	Volume (sacks):		Volume (bbls):	
Cement & Additives:				
	Density (ppg)	Yield (ft³/sk)	Water Req.	
Stage 2:				
	From Depth (ft):	1670'	To Depth (ft):	0'
Type: Surface Plug	Volume (sacks):	130	Volume (bbls):	27
Cement & Additives:				
	CLASS G	Density (ppg)	Yield (ft³/sk)	Water Req.
		15.8	1.15	5.00
Stage 3:				
	From Depth (ft):		To Depth (ft):	0'
Type: Top Off	Volume (sacks):	10	Volume (bbls):	3
Cement & Additives:				
	GLASS G	Density (ppg)	Yield (ft³/sk)	Water Req.
		15.8	1.15	5.00
Stage 4:				
	From Depth (ft):		To Depth (ft):	
Type:	Volume (sacks):		Volume (bbls):	
Cement & Additives:				
		Density (ppg)	Yield (ft³/sk)	Water Req.

SUMMARY

Preflushes:	5 bbls of	Fresh Water	Calculated Displacement (bbl):	Stage 1	Stage 2
	bbls of		Actual Displacement (bbl):		
	bbls of		Plug Bump (Y/N):	Bump Pressure (psi):	
Total Preflush/Spacer Volume (bbl):			Lost Returns (Y/N):	(if Y, when)	
Total Slurry Volume (bbl):	30				
Total Fluid Pumped	35				
Returns to Surface:	Cement	1 bbls			

Job Notes (fluids pumped / procedures / tools / etc.):

TOC-0'

Customer Representative Signature:

Thank You For Using
NexTier Completion Solutions

Cement Job Log

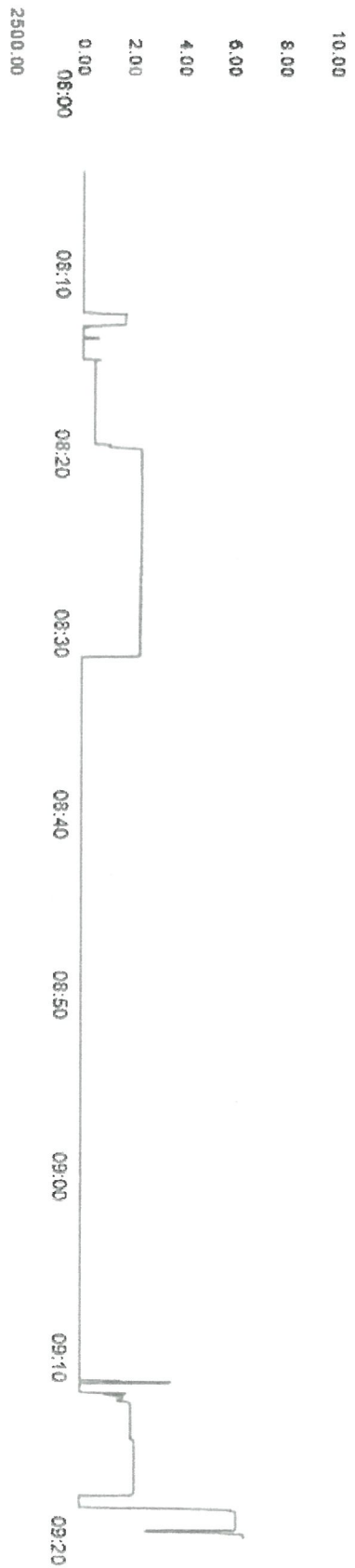
NEXTier									
Customer:	ENSIGN			Date:	16-Sep-20		Serv. Supervisor:	JAVIER TREJO	
Cust. Rep.:	Mat McGraw			Ticket #:	BCO-2009-0029		Serv. Center:	Brighton - 3021	
Well Name:	WALKER 24-10		RTS Date:	16-Sep-2020		API Well #:	0512329967		County:
Well Type:	Oil		RTS Time:	7:30 AM		Rig:	ENSIGN 354		State:
		Date	Time		Date	Time		Type of Job:	CM-P2A-PERM.
Left Yard:	16-Sep-20		6:00 AM		Left Loc.:	16-Sep-20		10:00 AM	Start Pump:
Arrived Loc.:	16-Sep-20		7:30 AM		Returned Yd.:	16-Sep-20		11:30 AM	End Pump:
								16-Sep-20	9:03 AM
TIME	Rate	Csg. Press.	Tbg. Press.	Ann. Press.	Stg. Vol.	Cum. Vol.	Stage Num.	Stage Details	
Note: Red boxes Indicate bad values	(bbl/min)	(psi)	(psi)	(psi)	(bbl)	(bbl)	Stage #		
8:00 AM								Left Yard or Current Location	
7:30 AM								ARRIVE ON LOCATION	
7:30 AM							1	GREET & MEET REP.	
7:35 AM		2000					1	SAFETY MEETING/ RIG UP	
8:04 AM	.5	17			1.0 bbl	1.0 bbl	1	PRESSURE TEST LINES	
8:12 AM	2.5	226			27.0 bbl	28.0 bbl	1	MIX & PUMP TAIL CMT #15.8, 132 SKS, YIELD 1.15	
8:23 AM							1	SHUT DOWN, RIG POOH 1620'-0"	
8:56 AM	.5	20			3.0 bbl	31.0 bbl	1	TOP OFF WELL. 3 BBLS TOC-0"	
9:03 AM							1	SHUT DOWN. WASH UP TO PIT	
9:15 AM							1	SAFETY MEETING/ RIG DOWN	
10:00 AM							1	LEAVE LOCATION	
10:00 AM								LEFT LOCATION	
11:30 AM								ARRIVED BACK AT YARD OR NEXT LOCATION	
Comments/Special Customer Instructions									

NEXTIER

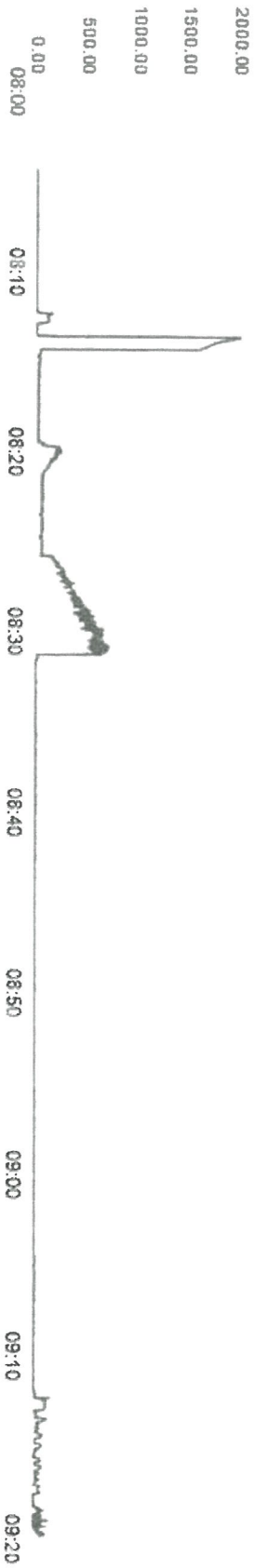
[illegible]

Client	ENSIGN	Client Rep	MATT	Supervisor	TREJO
Ticket No.	20090029	Well Name	WALKER 24-10	Unit No.	445084
Location		Job Type	Abandonment Plugs	Service District	BRIGHTON
Comments				Job Date	09/16/2020

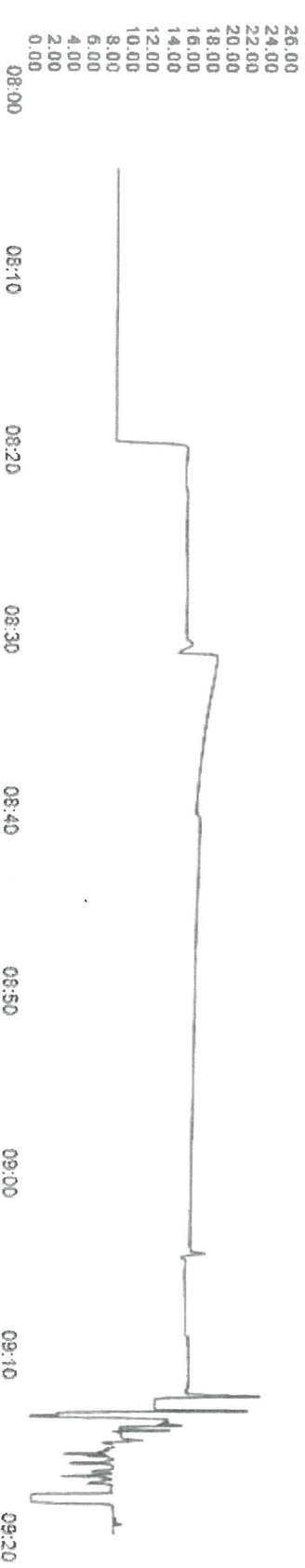
Unit 445084 Rate Total
(bpm)



Unit 445084 Pump Pressure
(psi)



Unit 445084 Density
(lb/gal)



RMWS - Service Ticket & Invoice:

Rocky Mountain Wireline Service
2144 Hwy 6 & 50
Grand Junction, CO 81505
970-245-9828



Ticket Number
112963

Date
9/15/2020

Well
Walker 24-10

Field
Wattenberg

County / State
Weld / Colorado

Services provided for:
ENSIGN WELL SERVICE
2154 Hwy 6 & 50
Grand Junction, Colorado 81505

Services ordered by:
Logan Hancock
(970)712-4498
Logan.Hancock@ensignenergy.com

Job Data

Field Office

Johnstown-
CO

Line Truck #
222

Crane #

Pickup
Truck #
71

Explosives Permit
#

Crew Members

G. Graham, G. Torres, N. Wells

CSG Size
4.5

WT
10.5#

Zero
GL W/KB 10'

Fluid
Water

Level

RMWS TD
6700'

Corrected

To Agree
With

Dated

Consultant
Matt McGraw

Job Notes

Travel

Report To Shop

9/15/2020 1:20 PM MDT

Arrive At Location

9/15/2020 2:40 PM MDT

On Well

Off Well

Depart Location

Return To Shop

Travel Notes

Activity

Miscellaneous - Bid Work

Description	From	To	Units Used	Rate	Minimum	Amount
Ensign - 4 1/2" 10K CIBP @ 5,000' +		6685	1.00 Units			\$0.00
Ensign - 4 1/2" 10K CIBP @ 5,000' +		6404	1.00 Units			\$0.00
Ensign - 4 1/2" 10K CIBP @ 5,000' or less		2500	1.00 Units			\$0.00
Ensign - Dump Bail 2 SX Cement (STANDARD)		6683	1.00 Units			\$0.00
Ensign - Dump Bail 2 SX Cement (STANDARD)		6402	1.00 Units			\$0.00
Ensign - Dump Bail 2 SX Cement (STANDARD)		2498	1.00 Units			\$0.00

Miscellaneous - Bid Work \$0.00

Total \$0.00

Signatures

Authorization Signature

Authorization Notes

AFE

Cost Code

Well / Lease
Walker 24-10

Approver Name
Matt McGraw

Stamp