



Bayswater Exploration & Production, LLC

East Ault 14-18-19HNB

API # 05-123-47061

Production

August 02, 2020

Quote #: QUO-46650-H0P5G2

Execution #: EXC-26615-D3M2V602



Bayswater Exploration & Production, LLC

Attention: Mr. Trevor Smith | (720) 335-9045 | trevor.smith@iptenergyservices.com

Bayswater Exploration & Production | 730 17th Street, Suite 610 | Denver, CO. 80202

Dear Mr. Trevor Smith,

Thank you for the opportunity to provide cementing services on this well. BJ Services strives to achieve complete customer satisfaction. If you have any questions regarding the services or data provided, please contact BJ Services at any time.

Sincerely,
Jason Creel
Field Engineer | (307) 365-9038 | Jason.Creel@bjservices.com

Field Office 1716 East Allison Rd., Cheyenne WY, 82007
Phone: (307) 459-6487

Sales Office 999 18th St. Suite 1200 Denver, CO 80202
Phone: (281) 408-2361

BJ Cementing Treatment Report

SERVICE SUPERVISOR	Richard White	FORMATION	Nio B
CLIENT FIELD REPRESENTATIVE	Bayswater	RIG	True 38
DISTRICT	Cheyenne, WY	COUNTY	WELD
SERVICE	Cementing	STATE / PROVINCE	CO

WELL GEOMETRY

TYPE	ID (in)	OD (in)	WEIGHT (lb/ft)	MD (ft)	TVD (ft)	EXCESS (%)
Casing	4.78	5.50	20.00	17,422.85	7,000.00	
Open Hole	8.50	0.00	0.00	17,422.85	7,000.00	7.00
Previous Casing	8.92	9.63	36.00	17,422.85	1,554.00	

HARDWARE

Bottom Plug Used?	No	Tool Type	Float Collar
Top Plug Used?	Yes	Tool Depth (ft)	17,393.82
Top Plug Provided By	Non BJ	Max Casing Pressure - Rated (psi)	12630.00
Top Plug Size	5.500	Max Casing Pressure - Operated (psi)	3000.00
Centralizers Used	Yes	Pipe Movement	None
Centralizers Quantity	59.00	Job Pumped Through	Manifold
Centralizers Type	Rigid	Top Connection Thread	BTC
Landing Collar Depth (ft)	17,394	Top Connection Size	5.5

CIRCULATION PRIOR TO JOB

Well Circulated By	Rig	PV Mud Out	20
Circulation Prior to Job	Yes	YP Mud In	7
Circulation Time (min)	10.00	YP Mud Out	7
Circulation Rate (bpm)	180.00	Solids Present at End of Circulation	No
Circulation Volume (bbls)	1800.00	10 sec SGS	8
Lost Circulation Prior to Cement Job	No	10 min SGS	15
Mud Density In (ppg)	10.10	30 min SGS	17
Mud Density Out (ppg)	10.10	Flare Prior to / during the Cement Job	No
PV Mud In	20	Gas Present	No

Client: Bayswater Exploration & Production, LLC

Well: EAST AULT 14-18-19HNB

Well API: 05-123-47061

Start Date: 8/1/2020

End Date: 8/2/2020

Field Ticket #:



TEMPERATURE

Ambient Temperature (°F)	65.00	Slurry Cement Temperature (°F)	65.00
Mix Water Temperature (°F)	65.00	Flow Line Temperature (°F)	65.00

FLUID DETAILS

FLUID TYPE	FLUID NAME	DENSITY (ppg)	YIELD (Cu Ft/sk)	H ₂ O REQ (gals/sk)	PLN TOP FLD (ft)	LENGTH (ft)	VOL (sk)	VOL (Cu Ft)	VOL (bbls)
Spacer / Pre Flush / Flush	IntegraGuard EZ Spacer II	12.0000			0.00				28.0000
Spacer / Pre Flush / Flush	IntegraGuard EZ Spacer II	11.5000			0.00				26.0000
Spacer / Pre Flush / Flush	IntegraGuard EZ Spacer II	11.0000			0.00				26.0000
Lead Slurry	BJCem P100.3.01C	13.2000	1.8290	9.86	0.00	6,883.00	945	1729.0000	307.8000
Tail Slurry	BJCem P50.6.02C	13.5000	1.4769	7.45	6,883.00	10,522.00	1745	2578.0000	459.0000
Displacement 2	Retarded Water + Chems	8.3331				0.00	0	0.0000	10.0000
Displacement Final	Water + Chems	8.3331			0.00			0.0000	375.7000

FLUID TYPE	FLUID NAME	COMPONENT	CONCENTRATION	UOM
Spacer / Pre Flush / Flush	IntegraGuard EZ Spacer II	RETARDER, R-31	0.5000	PPB
Spacer / Pre Flush / Flush	IntegraGuard EZ Spacer II	WEIGHTING ADDITIVE, W-11	242.6900	PPB
Spacer / Pre Flush / Flush	IntegraGuard EZ Spacer II	RETARDER, R-7C	2.0000	PPB
Spacer / Pre Flush / Flush	IntegraGuard EZ Spacer II	IntegraGuard GW-86	1.2000	PPB
Spacer / Pre Flush / Flush	IntegraGuard EZ Spacer II	SPACER SURFACTANT, SS-267	1.0000	GPB
Spacer / Pre Flush / Flush	IntegraGuard EZ Spacer II	RETARDER, R-7C	2.0000	PPB
Spacer / Pre Flush / Flush	IntegraGuard EZ Spacer II	RETARDER, R-31	0.5000	PPB
Spacer / Pre Flush / Flush	IntegraGuard EZ Spacer II	WEIGHTING ADDITIVE, W-11	242.6900	PPB
Spacer / Pre Flush / Flush	IntegraGuard EZ Spacer II	SPACER SURFACTANT, SS-267	1.0000	GPB
Spacer / Pre Flush / Flush	IntegraGuard EZ Spacer II	IntegraGuard GW-86	1.2000	PPB
Spacer / Pre Flush / Flush	IntegraGuard EZ Spacer II	SPACER SURFACTANT, SS-267	1.0000	GPB
Spacer / Pre Flush / Flush	IntegraGuard EZ Spacer II	RETARDER, R-7C	2.0000	PPB
Spacer / Pre Flush / Flush	IntegraGuard EZ Spacer II	IntegraGuard GW-86	1.2000	PPB
Spacer / Pre Flush / Flush	IntegraGuard EZ Spacer II	RETARDER, R-31	0.5000	PPB
Spacer / Pre Flush / Flush	IntegraGuard EZ Spacer II	WEIGHTING ADDITIVE, W-11	242.6900	PPB
Lead Slurry	BJCem P100.3.01C	RETARDER, SR-20	0.7000	BWOB
Lead Slurry	BJCem P100.3.01C	FOAM PREVENTER, FP-24	0.3000	BWOB

Client: Bayswater Exploration & Production, LLC

Well: EAST AULT 14-18-19HNB

Well API: 05-123-47061

Start Date: 8/1/2020

End Date: 8/2/2020

Field Ticket #:



FLUID TYPE	FLUID NAME	COMPONENT	CONCENTRATION	UOM
Lead Slurry	BJCem P100.3.01C	CEMENT, ASTM TYPE III	100.0000	PCT
Lead Slurry	BJCem P100.3.01C	IntegraCare EC-2	3.0000	BWOB
Lead Slurry	BJCem P100.3.01C	FLUID LOSS, FL-66	0.5000	BWOB
Lead Slurry	BJCem P100.3.01C	IntegraGuard GW-86	0.1000	BWOB
Tail Slurry	BJCem P50.6.02C	IntegraGuard GW-86	0.1000	BWOB
Tail Slurry	BJCem P50.6.02C	CEMENT, FLY ASH (ROCKIES)	50.0000	PCT
Tail Slurry	BJCem P50.6.02C	RETARDER, SR-20	0.1000	BWOB
Tail Slurry	BJCem P50.6.02C	FLUID LOSS, FL-66	0.2000	BWOB
Tail Slurry	BJCem P50.6.02C	EXTENDER, BENTONITE	2.0000	BWOB
Tail Slurry	BJCem P50.6.02C	FOAM PREVENTER, FP-24	0.3000	BWOB
Tail Slurry	BJCem P50.6.02C	CEMENT, CLASS G	50.0000	PCT
Displacement 2	Retarded Water + Chems	BIOCIDE, BIOC11139W	0.0100	GPB
Displacement 2	Retarded Water + Chems	RETARDER, SR-61L	0.1000	GPB
Displacement 2	Retarded Water + Chems	ResCare CS-2	0.0800	GPB
Displacement 2	Retarded Water + Chems	OXYGEN SCAVENGER, OS-30	0.1680	GPB
Displacement 2	Retarded Water + Chems	CORROSION INHIBITORS, CI-27	0.2100	GPB
Displacement Final	Water + Chems	BIOCIDE, BIOC11139W	0.0100	GPB
Displacement Final	Water + Chems	CORROSION INHIBITORS, CI-27	0.2100	GPB
Displacement Final	Water + Chems	ResCare CS-2	0.0800	GPB
Displacement Final	Water + Chems	OXYGEN SCAVENGER, OS-30	0.1680	GPB

DISPLACEMENT AND END OF JOB SUMMARY

Displaced By	BJ	Amt of Cement Returned / Reversed	30.00
Calculated Displacement Vol (bbls)	386.00	Method Used to Verify Returns	Visual
Actual Displacement Vol (bbls)	386.00	Amt of Spacer to Surface	80.00
Did Float Hold?	Yes	Pressure Left on Casing (psi)	0.00
Bump Plug	Yes	Amt Bled Back After Job	4.50
Bump Plug Pressure (psi)	2500.00	Total Volume Pumped (bbls)	1233.00
Were Returns Planned at Surface	Yes	Top Out Cement Spotted	No
Cement Returns During Job	Full	Lost Circulation During Cement Job	No

BJ Cementing Event Log

Long String - Cheyenne, WY - Richard White

SEQ	START DATE / TIME	EVENT	DENSITY (ppg)	PUMP RATE (bpm)	PUMP VOL (bbls)	PIPE PRESSURE (psi)	COMMENTS
1	08/01/2020 20:00	Callout					Crew called out checked and verified equipment
2	08/01/2020 21:00	Depart for Location					Steacs breifing and depart for location
3	08/01/2020 21:30	Arrive on Location					arrive at location checked and verified mix water
4	08/01/2020 22:00	STEACS Briefing					Pre rig up saftey meeting
5	08/01/2020 22:15	Rig Up					Rig up all treating equipment
6	08/01/2020 22:30	Other (See comment)					Wait for rig to finish running casing and circulating
7	08/02/2020 01:00	Prime Up	12.0000	3.00	5.00	600.00	primer lines with 12 ppg spacer
8	08/02/2020 01:12	Pressure Test					Pressure test lines to 5300 psi
9	08/02/2020 01:15	Pump Spacer	12.0000	4.00	28.00	600.00	pump 28 bbl spacer @ 12ppg from CTF-006 wet and dry samples taken and verified
10	08/02/2020 01:23	Pump Spacer	11.5000	4.00	26.00	600.00	pump 26 bbl spacer @11.5 ppg from CTF-006 wet and dry samples taken and verified
11	08/02/2020 01:29	Pump Spacer	11.0000	4.00	26.00	600.00	pump 26 bbl spacer @ 11ppg from CTF-006 wet and dry samples taken and verified
12	08/02/2020 01:38	Pump Lead Cement	13.2000	6.00	307.80	550.00	pump 307.8 bbl cmt @13.2 ppg 945 sks 1829y 9.86 gps from silo 449 wet and dry samples taken and verified
13	08/02/2020 02:29	Pump Tail Cement	13.5000	6.00	195.60	550.00	pump 195.6 bbl tail cmt @ 13.5 ppg 745 sks 1.4769y 7.45 gps from silo 453 wet and dry samles taken and verified

Client: Bayswater Exploration & Production, LLC

Well Name / API: EAST AULT 14-18-19HNB / 05-123-47061

Well MD: 17422.85

Quote #: QUO-46650-H0P5G2

Plan #: ORD-26615-D3M2V6

Execution #: EXC-26615-D3M2V602



SEQ	START DATE / TIME	EVENT	DENSITY (ppg)	PUMP RATE (bpm)	PUMP VOL (bbls)	PIPE PRESSURE (psi)	COMMENTS
14	08/02/2020 03:00	Pump Tail Cement	13.5000	6.00	263.40	500.00	pump 263.4 bbl tail cmt @ 13.5 ppg 1000 sks 1.4769y 7.45 gps from silo 644 wet and dry samles taken and varified
15	08/02/2020 03:45	Pump Tail Cement	13.5000		459.00		pump a total of 459 bbl of tail cmt @ 13.5ppg 1745sks 1.4769y 7.45 gps
16	08/02/2020 03:46	Wash Pumps and Lines					wash pumps and lines to pit
17	08/02/2020 03:47	Drop Top Plug					
18	08/02/2020 03:57	Pump Displacement	8.3300	10.00	150.00	2100.00	pump 150 bbl disp @ 10 pm
19	08/02/2020 04:13	Pump Displacement	8.3300	8.00	120.00	2800.00	pump 120 bbl disp. @ 8 bpm/ shutdown got spacer to surface
20	08/02/2020 04:30	Pump Displacement	8.3300	6.00	90.00	2800.00	pump 90 bbl disp. @ 6 bpm
21	08/02/2020 04:46	Pump Displacement	8.3300	4.00	26.00	2400.00	pump last 26 bbl disp. @ 4 bpm to land plug
22	08/02/2020 04:50	Pump Displacement	8.3300		386.00		pump a total of 386 bbl of disp. first 10 with SR-61L and we got 80 bbl spacer and 30 bbl cmt to surface
23	08/02/2020 04:51	Land Plug					land plug @ 2500 psi and took to 3000 psi
24	08/02/2020 04:56	Check Floats					floats held 4.5 bbl back
25	08/02/2020 05:00	Rig Down					
26	08/02/2020 05:30	Leave Location					

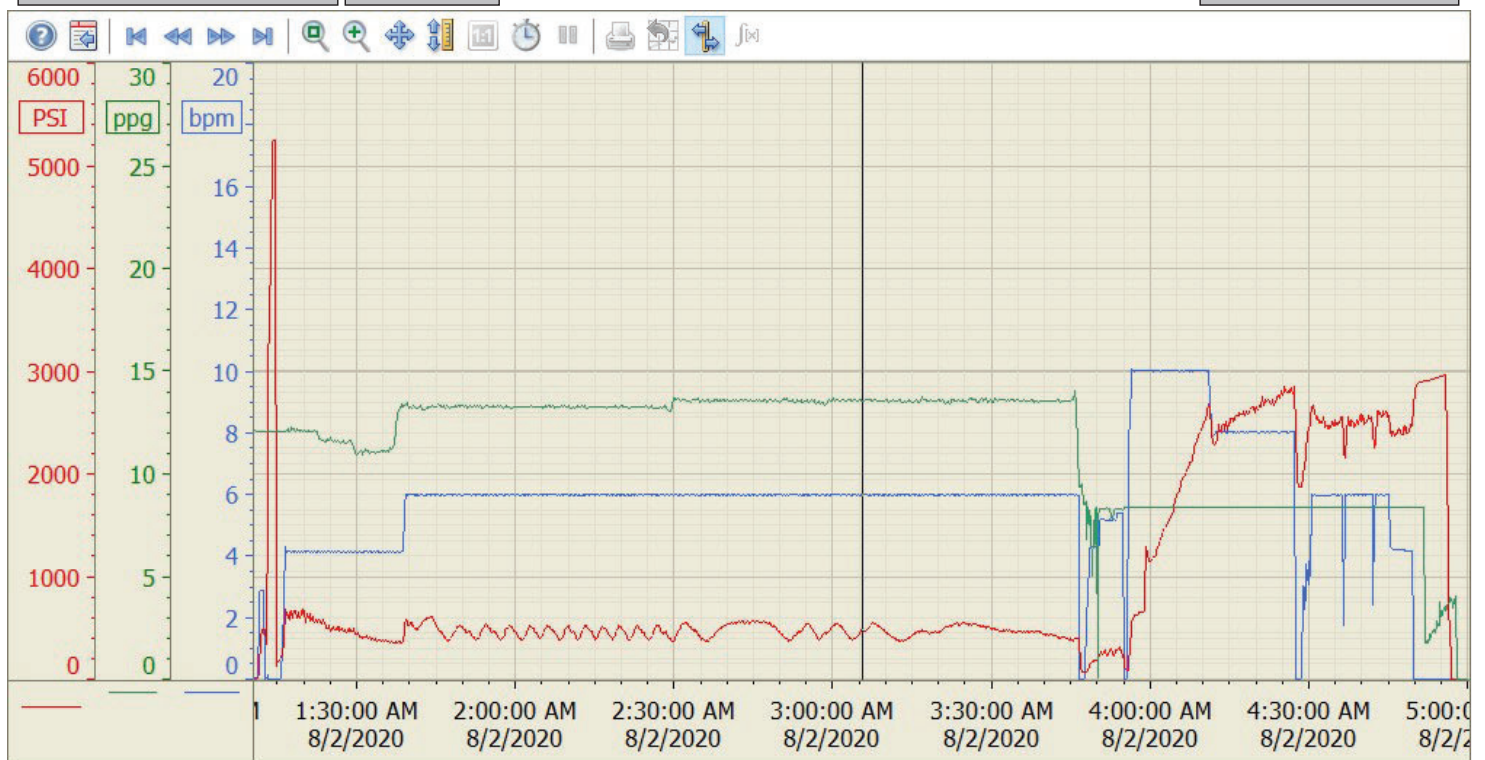
Summary Trend

BAYSWATER

14-18-19 HNB



Lease: EAST AULT



8/2/2020 5:50:22 AM