



Bayswater Exploration & Production, LLC

East Ault 10-18-19HC

API # 05-123-47066

Production

July 9, 2020

Quote #: QUO-46258-T9B7R5

Execution #: EXC-26453-W7V1W302



Bayswater Exploration & Production, LLC

Attention: Mr. Trevor Smith | (720) 335-9045 | trevor.smith@iptenergyservices.com

Bayswater Exploration & Production | 730 17th Street, Suite 610 | Denver, CO. 80202

Dear Mr. Trevor Smith,

Thank you for the opportunity to provide cementing services on this well. BJ Services strives to achieve complete customer satisfaction. If you have any questions regarding the services or data provided, please contact BJ Services at any time.

Sincerely,
Jason Creel
Field Engineer | (307) 365-9038 | Jason.Creel@bjservices.com

Field Office 1716 East Allison Rd., Cheyenne WY, 82007
Phone: (307) 459-6487

Sales Office 999 18th St. Suite 1200 Denver, CO 80202
Phone: (281) 408-2361

BJ Cementing Treatment Report

SERVICE SUPERVISOR	Jason Ertl	FORMATION	Codell
CLIENT FIELD REPRESENTATIVE	Marsh	RIG	True 38
DISTRICT	Cheyenne, WY	COUNTY	WELD
SERVICE	Cementing	STATE / PROVINCE	CO

WELL GEOMETRY

TYPE	ID (in)	OD (in)	WEIGHT (lb/ft)	MD (ft)	TVD (ft)	EXCESS (%)
Open Hole	8.50	0.00	0.00	17,418.00	7,391.00	7.00
Previous Casing	8.92	9.63	36.00	1,552.00	1,552.00	
Casing	4.78	5.50	20.00	17,408.00	7,391.00	

HARDWARE

Bottom Plug Used?	No	Tool Type	Float Collar
Top Plug Used?	Yes	Tool Depth (ft)	17,381.60
Top Plug Provided By	Non BJ	Max Casing Pressure - Rated (psi)	12640.00
Top Plug Size	5.500	Max Casing Pressure - Operated (psi)	6000.00
Centralizers Used	Yes	Pipe Movement	None
Centralizers Quantity	204.00	Job Pumped Through	Manifold
Centralizers Type	Rigid	Top Connection Thread	BTC
Landing Collar Depth (ft)	17,410	Top Connection Size	5.5

CIRCULATION PRIOR TO JOB

Well Circulated By	Rig	YP Mud In	8
Circulation Prior to Job	Yes	YP Mud Out	8
Circulation Time (min)	210.00	Solids Present at End of Circulation	No
Circulation Rate (bpm)	13.00	10 sec SGS	8
Circulation Volume (bbls)	2730.00	10 min SGS	13
Lost Circulation Prior to Cement Job	No	30 min SGS	15
Mud Density In (ppg)	10.00	Flare Prior to / during the Cement Job	No
Mud Density Out (ppg)	10.00	Gas Present	Yes
PV Mud In	20	Gas Units	925
PV Mud Out	20		

TEMPERATURE

Ambient Temperature (°F)	80.00	Slurry Cement Temperature (°F)	77.00
Mix Water Temperature (°F)	74.00	Flow Line Temperature (°F)	83.00

FLUID DETAILS

FLUID TYPE	FLUID NAME	DENSITY (ppg)	YIELD (Cu Ft/sk)	H ₂ O REQ (gals/sk)	PLN TOP FLD (ft)	LENGTH (ft)	VOL (sk)	VOL (Cu Ft)	VOL (bbls)
Spacer / Pre Flush / Flush	IntegraGuard EZ Spacer II	12.0000			0.00				28.0000
Spacer / Pre Flush / Flush	IntegraGuard EZ Spacer II	11.5000			0.00				26.0000
Spacer / Pre Flush / Flush	IntegraGuard EZ Spacer II	11.0000			0.00				26.0000
Lead Slurry	BJCem P100.3.01C	13.2000	1.8290	9.86	0.00	6,754.00	930	1701.0000	302.9000
Tail Slurry	BJCem P50.6.02C	13.5000	1.4769	7.45	6,754.00	10,670.00	1770	2615.0000	465.6000
Displacement 2	Retarded Water + Chems	8.3331				0.00	0	0.0000	10.0000
Displacement Final	Water + Chems	8.3331			0.00			0.0000	374.2000

Client: Bayswater Exploration & Production, LLC

Well: EAST AULT 10-18-19HC

Well API: 05-123-47066

Start Date: 7/8/2020

End Date: 7/8/2020

Field Ticket #:



FLUID TYPE	FLUID NAME	COMPONENT	CONCENTRATION	UOM
Spacer / Pre Flush / Flush	IntegraGuard EZ Spacer II	WEIGHTING ADDITIVE, W-11	242.6900	PPB
Spacer / Pre Flush / Flush	IntegraGuard EZ Spacer II	RETARDER, R-7C	2.0000	PPB
Spacer / Pre Flush / Flush	IntegraGuard EZ Spacer II	SPACER SURFACTANT, SS-267	1.0000	GPB
Spacer / Pre Flush / Flush	IntegraGuard EZ Spacer II	IntegraGuard GW-86	1.2000	PPB
Spacer / Pre Flush / Flush	IntegraGuard EZ Spacer II	RETARDER, R-31	0.5000	PPB
Spacer / Pre Flush / Flush	IntegraGuard EZ Spacer II	WEIGHTING ADDITIVE, W-11	242.6900	PPB
Spacer / Pre Flush / Flush	IntegraGuard EZ Spacer II	SPACER SURFACTANT, SS-267	1.0000	GPB
Spacer / Pre Flush / Flush	IntegraGuard EZ Spacer II	RETARDER, R-7C	2.0000	PPB
Spacer / Pre Flush / Flush	IntegraGuard EZ Spacer II	RETARDER, R-31	0.5000	PPB
Spacer / Pre Flush / Flush	IntegraGuard EZ Spacer II	IntegraGuard GW-86	1.2000	PPB
Spacer / Pre Flush / Flush	IntegraGuard EZ Spacer II	RETARDER, R-7C	2.0000	PPB
Spacer / Pre Flush / Flush	IntegraGuard EZ Spacer II	SPACER SURFACTANT, SS-267	1.0000	GPB
Spacer / Pre Flush / Flush	IntegraGuard EZ Spacer II	WEIGHTING ADDITIVE, W-11	242.6900	PPB
Spacer / Pre Flush / Flush	IntegraGuard EZ Spacer II	RETARDER, R-31	0.5000	PPB
Spacer / Pre Flush / Flush	IntegraGuard EZ Spacer II	IntegraGuard GW-86	1.2000	PPB
Lead Slurry	BJCem P100.3.01C	IntegraCare EC-2	3.0000	BWOB
Lead Slurry	BJCem P100.3.01C	CEMENT, ASTM TYPE III	100.0000	PCT
Lead Slurry	BJCem P100.3.01C	RETARDER, SR-20	0.7000	BWOB
Lead Slurry	BJCem P100.3.01C	FLUID LOSS, FL-66	0.5000	BWOB
Lead Slurry	BJCem P100.3.01C	IntegraGuard GW-86	0.1000	BWOB
Lead Slurry	BJCem P100.3.01C	FOAM PREVENTER, FP-24	0.3000	BWOB
Tail Slurry	BJCem P50.6.02C	CEMENT, CLASS G	50.0000	PCT
Tail Slurry	BJCem P50.6.02C	RETARDER, SR-20	0.1000	BWOB
Tail Slurry	BJCem P50.6.02C	CEMENT, FLY ASH (ROCKIES)	50.0000	PCT
Tail Slurry	BJCem P50.6.02C	FOAM PREVENTER, FP-24	0.3000	BWOB
Tail Slurry	BJCem P50.6.02C	IntegraGuard GW-86	0.1000	BWOB
Tail Slurry	BJCem P50.6.02C	EXTENDER, BENTONITE	2.0000	BWOB
Tail Slurry	BJCem P50.6.02C	FLUID LOSS, FL-66	0.2000	BWOB
Displacement 2	Retarded Water + Chems	RETARDER, SR-61L	0.1000	GPB
Displacement 2	Retarded Water + Chems	BIOCIDE, BIOC11139W	0.0100	GPB
Displacement 2	Retarded Water + Chems	OXYGEN SCAVENGER, OS-30	0.1680	GPB
Displacement 2	Retarded Water + Chems	ResCare CS-2	0.0800	GPB
Displacement 2	Retarded Water + Chems	CORROSION INHIBITORS, CI-27	0.2100	GPB
Displacement Final	Water + Chems	BIOCIDE, BIOC11139W	0.0100	GPB
Displacement Final	Water + Chems	OXYGEN SCAVENGER, OS-30	0.1680	GPB
Displacement Final	Water + Chems	CORROSION INHIBITORS, CI-27	0.2100	GPB
Displacement Final	Water + Chems	ResCare CS-2	0.0800	GPB

Client: Bayswater Exploration & Production, LLC

Well: EAST AULT 10-18-19HC

Well API: 05-123-47066

Start Date: 7/8/2020

End Date: 7/8/2020

Field Ticket #:



DISPLACEMENT AND END OF JOB SUMMARY

Displaced By	BJ	Amt of Cement Returned / Reversed	26.00
Calculated Displacement Vol (bbls)	384.20	Method Used to Verify Returns	Visual
Actual Displacement Vol (bbls)	384.20	Amt of Spacer to Surface	80.00
Did Float Hold?	Yes	Pressure Left on Casing (psi)	0.00
Bump Plug	Yes	Amt Bled Back After Job	3.50
Bump Plug Pressure (psi)	3200.00	Total Volume Pumped (bbls)	1237.80
Were Returns Planned at Surface	Yes	Top Out Cement Spotted	No
Cement Returns During Job	Full	Lost Circulation During Cement Job	No

BJ Cementing Event Log

Long String - Cheyenne, WY - Jason Ertl

SEQ	START DATE / TIME	EVENT	DENSITY (ppg)	PUMP RATE (bpm)	PUMP VOL (bbls)	PIPE PRESSURE (psi)	COMMENTS
1	07/09/2020 01:00	Callout					Crew called out, requested on location at 07:00 on 7/9/2020
2	07/09/2020 02:00	STEACS Briefing					Journey management STEACS briefing with BJ crew about the hazards of driving to location.
3	07/09/2020 02:15	Depart for Location					BJ Crew departed for location.
4	07/09/2020 04:30	Arrive on Location					BJ Crew arrived on location and conducted a STEACS briefing with BJ crew about the hazards of spotting equipment in
5	07/09/2020 04:45	Circulate Well					Wait for rig to finish circulating the well.
6	07/09/2020 07:50	STEACS Briefing					STEACS Briefing with BJ crew about the hazards of rigging up water, bulk and high pressure lines
7	07/09/2020 08:06	Other (See comment)	8.3300	2.50	5.00	650.00	Pump 5 bbls spacer ahead to fill lines for pressure test.
8	07/09/2020 08:09	Pressure Test				5000.00	Pressure Test BJ lines and valves to 5000 psi. Good Test no leaks.
9	07/09/2020 08:14	Pump Spacer	12.0000	4.00	28.00	750.00	Mix and pump 28 bbls 12.0 lb/gal spacer from Pod 1 on CTF-006.
10	07/09/2020 08:21	Pump Spacer	11.5000	4.00	26.00	600.00	Mix and pump 26 bbls 11.5 lb/gal spacer from Pod 1 on CTF-006.
11	07/09/2020 08:27	Pump Spacer	11.0000	4.00	26.00	553.00	Mix and pump 26 bbls 11.0 lb/gal spacer from Pod 1 on CTF-006.
12	07/09/2020 08:36	Pump Lead Cement	13.2000	6.00	302.90	525.00	Mix and pump 930 sacks of BJ Cem Lead Cement at 13.2 lb/gal, 1.829 cuft/sk and 9.86 gals/sk from Silo CTS-449
13	07/09/2020 09:24	Pump Tail Cement	13.5000	6.00	202.50	500.00	Mix and pump 770 sacks of BJ Cem Tail Cement at 13.5 lb/gal, 1.4769 cuft/sk and 7.45 gals/sk from Silo CTS-453
14	07/09/2020 09:55	Pump Tail Cement	13.5000	6.00	263.10	490.00	Mix and pump 1000 sacks of BJ Cem Tail Cement at 13.5 lb/gal, 1.4769 cuft/sk and 7.45 gals/sk. from Silo CTS-655
15	07/09/2020 10:41	Wash Pumps and Lines	8.3300	6.00	15.00	200.00	Wash pumps and lines to the pit.
16	07/09/2020 10:51	Drop Top Plug					Drop top Plug

Client: Bayswater Exploration & Production, LLC

Well Name / API: EAST AULT 10-18-19HC / 05-123-47066

Well MD: 17424



Quote #: QUO-46258-T9B7R5

Plan #: ORD-26453-W7V1W3

Execution #: EXC-26453-W7V1W302

SEQ	START DATE / TIME	EVENT	DENSITY (ppg)	PUMP RATE (bpm)	PUMP VOL (bbls)	PIPE PRESSURE (psi)	COMMENTS
17	07/09/2020 10:52	Pump Displacement	8.3300	10.00	0.00	600.00	Pump 384.2 bbls Displacement with OS-30, CI-27, ResCare CS-2 throughout and SR-61L retarder in the first 10bbls
18	07/09/2020 10:55	Pump Displacement	8.3300	10.00	50.00	1000.00	50 bbls away
19	07/09/2020 11:02	Pump Displacement	8.3300	10.00	100.00	1700.00	100 bbls away
20	07/09/2020 11:09	Pump Displacement	8.3300	9.00	170.00	2500.00	Slow rate with 170 bbls away.
21	07/09/2020 11:11	Pump Displacement	8.3300	9.00	200.00	2700.00	200 bbls away
22	07/09/2020 11:19	Pump Displacement	8.3300	8.00	250.00	2900.00	250 bbls away
23	07/09/2020 11:21	Pump Displacement	8.3300	8.00	268.00	3000.00	Shutdown to line out return valves with traces of spacer back to surface
24	07/09/2020 11:23	Pump Displacement	8.3300	7.00	268.00	2800.00	Come back online at 7 bpm to finish displacement.
25	07/09/2020 11:26	Pump Displacement	8.3300	7.00	270.00	2800.00	Spacer to surface
26	07/09/2020 11:29	Pump Displacement	8.3300	7.00	300.00	2800.00	300 bbls away
27	07/09/2020 11:36	Pump Displacement	8.3300	7.00	350.00	2800.00	350 bbls away
28	07/09/2020 11:38	Pump Displacement	8.3300	7.00	358.00	2800.00	Cement to surface.
29	07/09/2020 11:39	Pump Displacement	8.3300	4.00	370.00	2200.00	Slow rate
30	07/09/2020 11:42	Land Plug	8.3300	0.00	384.20	2200.00	FCP was 2200 psi brought pressure to 3200psi.
31	07/09/2020 11:45	Check Floats					Floats held with 3.5 bbl back to the truck
32	07/09/2020 11:47	STEACS Briefing					STEACS Briefing with BJ crew and rig crew about the hazards of rigging down the head, water, bulk and high-pressure lines.
33	07/09/2020 11:55	Rig Down					BJ crew and rig crew start rigging down the head, water, bulk and high-pressure lines.
34	07/09/2020 12:00	STEACS Briefing					BJ Journey management STEACS briefing with BJ crew about the hazards of driving to the yard.
35	07/09/2020 12:10	Leave Location					Job Completed, BJ Crew leave Location.

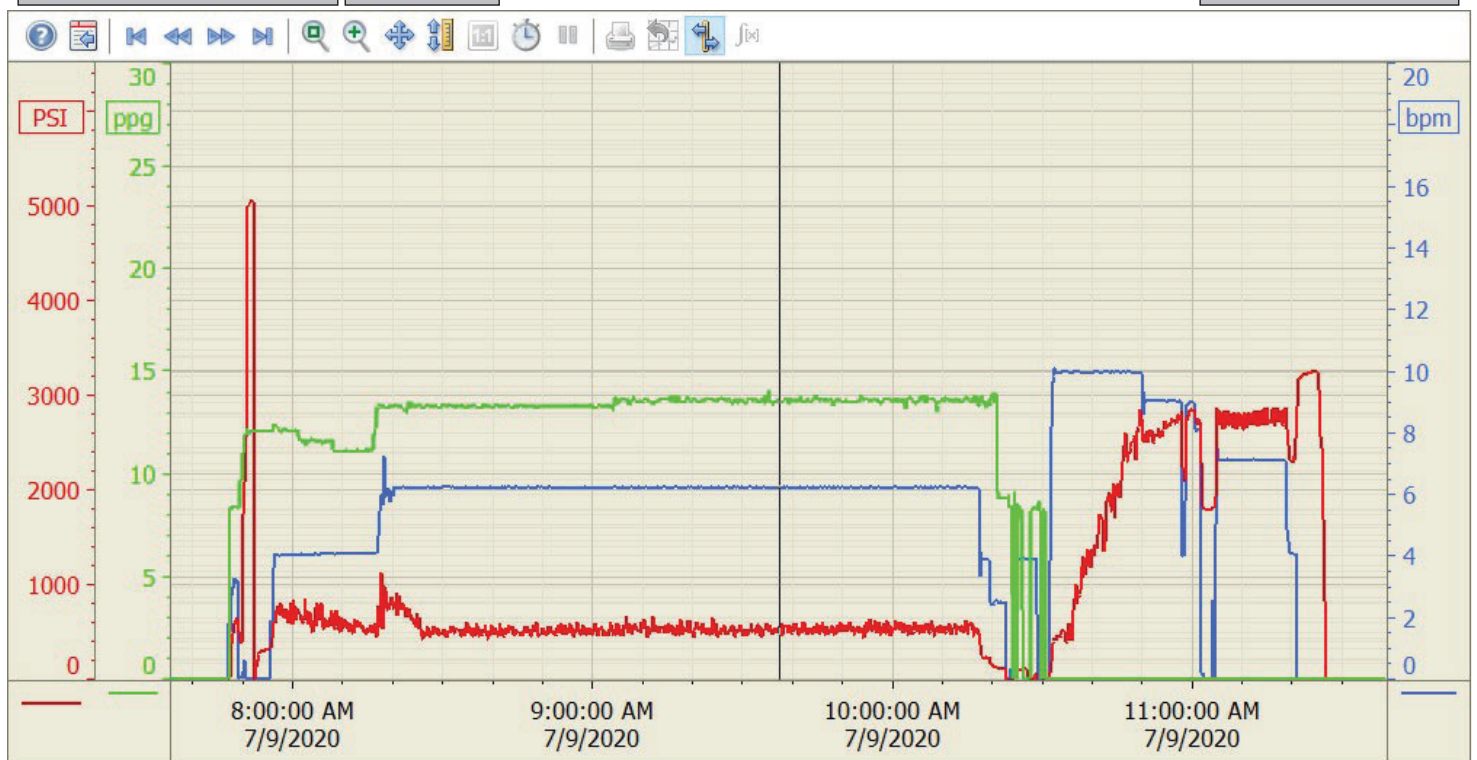
Summary Trend

Bayswater

10-18-19HC



Lease: East Ault



7/9/2020 12:18:52 PM