



Service Order #: 85525

Date: 01-Sep-20

Well Name	Location	County	St	API#		
FEDERAL 1		WELD	CO	05-123-05527		
Formation	Cement Via	Type Of Service	Well Type	Age	AFE#	PO#
	TUBING	PLUG				

Customer: BISON OIL &amp; GAS

Remarks: 130.0SK/26.6BBL TD @ 6210' - TOC @ 5912'  
60.0SK/12.3BBL TD @ 4778' - TOC @ 4670'  
100.0SK/20.5BBL TD @ 4218' - TOC @ 3878'  
100.0SK/20.5BBL TD @ 1716' - TOC @ 1417'  
488.0SK/99.1BBL TD @ 615' - TOC @ 290'  
163.0SK/33.4BBL TD @ 290' - TOC @ 0'  
5.0SK/1.0BBL TOPOFF

Customer Rep: BRAD/GARY

PH:

## WELLBORE DATA

Type	Size	Weight	Depth	Volume
Surface Casing:	10.750			
Production Casing:				
Intermediate:				
Drill Pipe:				
Tubing:	2.875			

Type	Size	Depth (Top)	Depth (Bot)	Volume
Liner:				
Open Hole:	7.875			

## OTHER DATA

BHT	Max PSI	Total Depth

Packer or RetainerType / Depth:

Perf Depths:	#	Total
	0	0
	0	
	0	

TIME	PUMP RATES		DENSITY	PRESS	STG TOT	TOTAL	REMARKS
	WATER (gpm)	PUMP (bpm)	(lb/gl)	(psi)	(bbls)	(bbls)	
14:56	0	0.0	6.88	0	0.0	0.0	START WATER
15:03	0	2.6	15.63	434	8.9	8.9	END WATER/ START CEMENT
15:13	0	2.8	15.61	107	26.8	35.8	END CEMENT/ START WATER
15:14	0	2.9	14.89	53	1.0	38.4	END WATER/ START MUD
15:25	0	0.0	13.22	6	32.0	70.6	END MUD
21:03	0	0.0	6.88	53	0.0	0.0	START WATER
21:10	0	2.6	15.71	436	8.9	8.9	END WATER/ START CEMENT
21:15	0	2.8	10.28	166	12.3	21.4	END CEMENT/ START WATER
21:16	0	2.8	8.35	109	0.9	23.3	END WATER/ START MUD
21:24	0	3.2	8.73	471	25.4	48.9	END MUD
2:25	0	0.0	6.88	88	0.0	0.0	START WATER
2:33	0	2.5	15.72	485	8.8	8.8	END WATER/ START CEMENT
2:41	0	2.7	12.17	162	20.4	29.5	END CEMENT/ START WATER
2:41	0	2.8	8.38	199	0.9	31.5	END WATER/ START MUD
2:48	0	3.6	8.89	410	21.3	53.2	END MUD
9:08	0	0.0	6.88	0	0.0	0.0	START WATER
9:14	0	2.7	15.93	307	8.8	8.8	END WATER/ START CEMENT
9:21	0	2.9	14.57	150	20.4	29.5	END CEMENT/ START WATER
9:22	0	3.0	9.96	43	0.9	32.3	END WATER/ START MUD
9:25	0	0.7	10.76	6	6.8	39.3	END MUD
20:13	3	72.0	2.09	3	0.0	0.0	START WATER
20:16	0	3.4	15.39	124	15.0	15.0	END WATER/ START CEMENT
21:03	0	2.9	7.71	309	98.9	114.9	END CEMENT
2:07	0	0.0	6.88	58	23.1	23.1	START WATER

Customer Acknowledgement:

Service Rating:

- ☐ Satisfactory  
☐ Unsatisfactory

Cementer:

JEREMIE

## PRODUCTS USED

15.8# G, 1.15YIELD, 4.99GAL/SK  
FLUIDS PROVIDED BY CUSTOMER



Service Order #: 85525

Date: 01-Sep-20

2:23	0	1.2	15.68	6	36.9	36.9	END WATER/ START CEMENT
2:35	0	0.0	10.23	0	33.4	70.3	END CEMENT
2:49	0	4.2	8.48	56	4.3	74.7	Paused 02:49:42

**Summary**

Max Fl. Rate	Avg Fl. Rate	Max Psi	Avg Psi
72.0	0.7	2,326	170

Customer Acknowledgement:

Service Rating:

- ☐ Satisfactory  
☐ Unsatisfactory

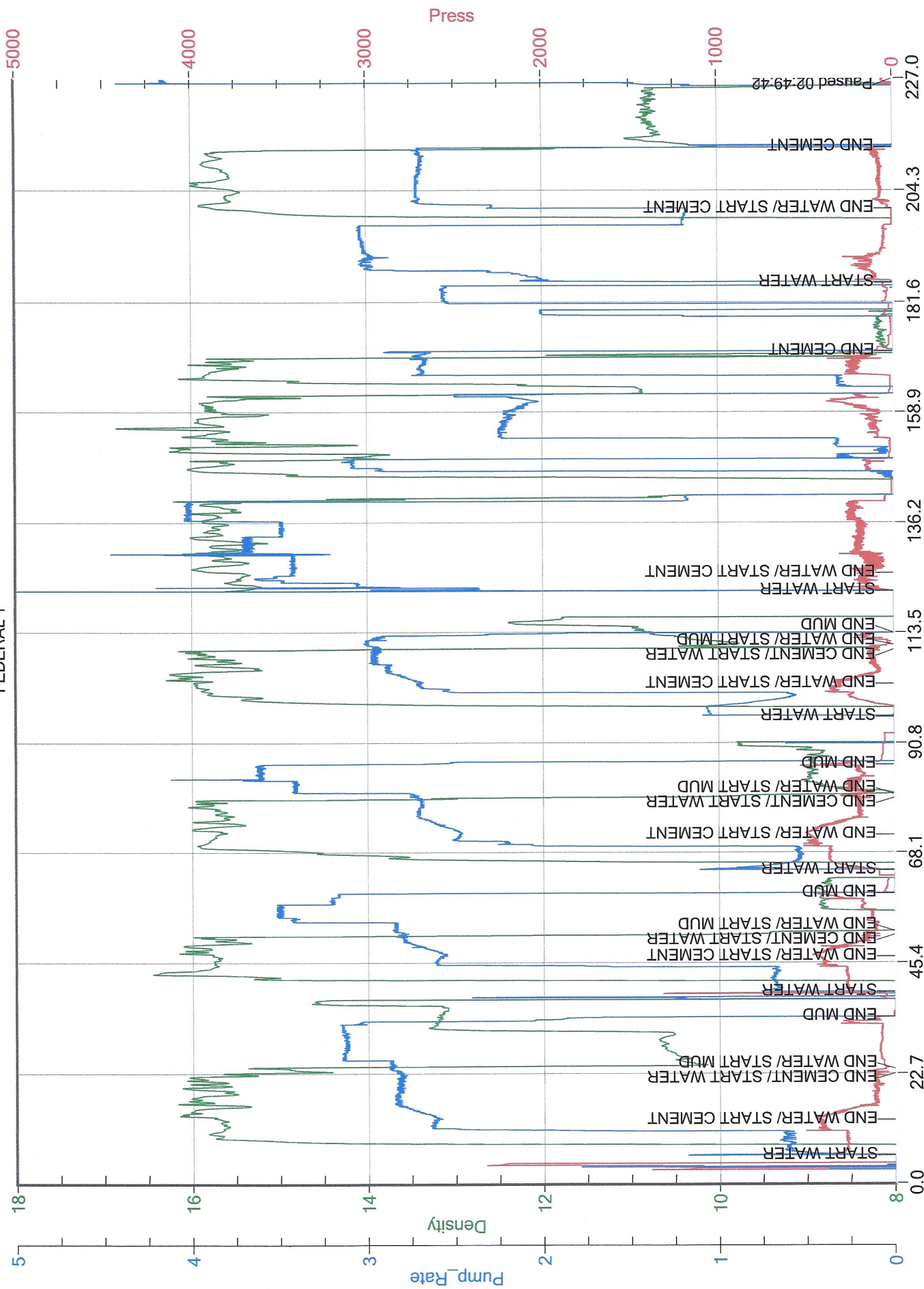
Cementer:

JEREMIE

**PRODUCTS USED**

15.8# G, 1.15YIELD, 4.99GAL/SK  
FLUIDS PROVIDED BY CUSTOMER

# BISON OIL & GAS FEDERAL 1



Job Started On: 09/01/2020 @ 2:50:27 PM