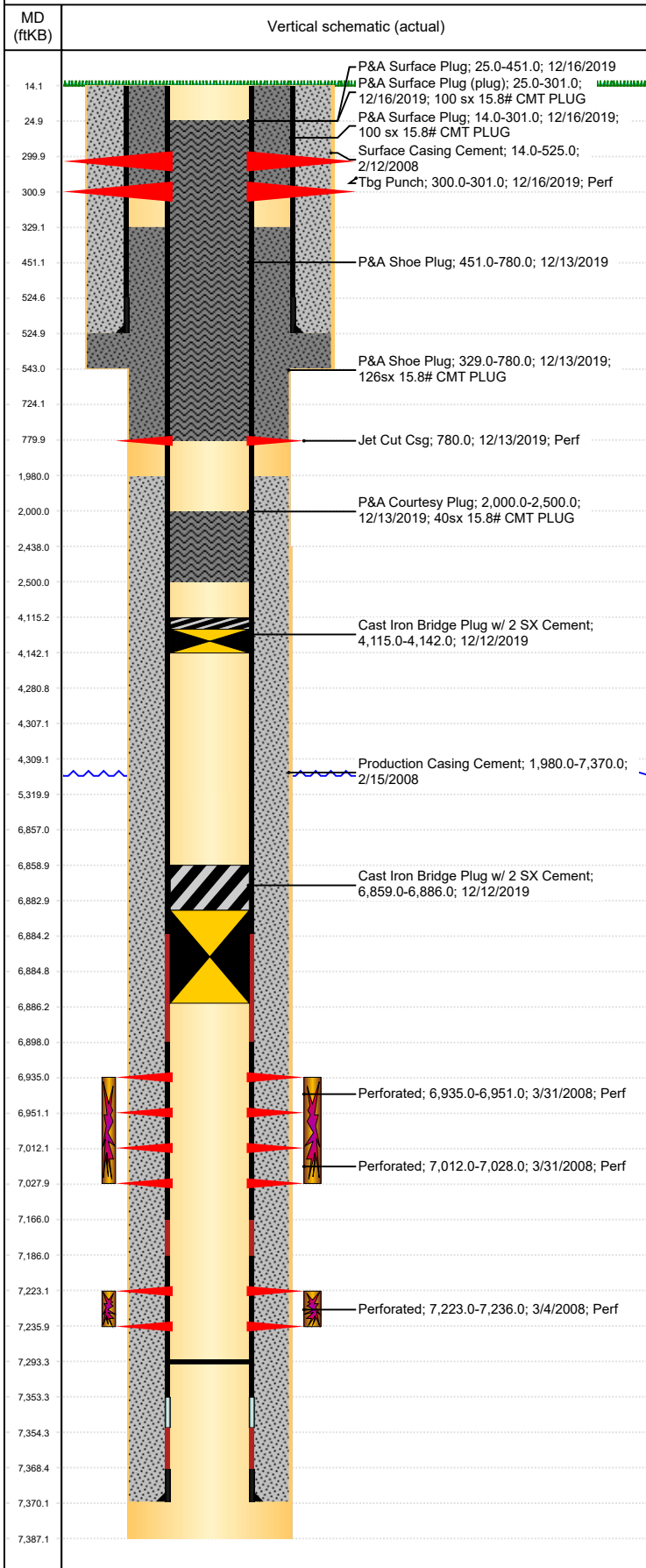


Well Name: SCHMIDT G19-23

VERTICAL, ORIGINAL HOLE, 9/1/2020 10:45:08 AM



Well Header									
API 05-123-25440		Business Unit DJ BASIN			District 15		Well Config VERTICAL		
KB - GL / MSL (ft... 14.00		Spud Date 2/11/2008		P & A Date 4/14/2020		Well Production Status PA			SoRT Yes
Comment DISCREPANCY: SURFACE CSG SET DEPTH- STATE 543' (WRITTEN IN), DRL RPTS 525', USED 525'. 12/23/08- CIFTP TO ALL OF #236 IN @ 7293.37'. STATE SHOWS SHUT IN SINCE MAR 2017.									
Surface Location (Congressional)									
Qtr 3 SW	Qtr 4 SE	Section 19	Twnshp 4	Twnsh... N	Range 65	Rng E/... W	Actual Latitude (°) 40.29427204	Actual Longitude (°) -104.70130213	
Wellbore Sections									
Section Des			Size (in)			Act Top, MD (ftKB)		Act Btm, MD (ftKB)	
SURFACE			12 1/4			14		543	
PRODUCTION			7 7/8			543		2,438	
PRODUCTION			7 7/8			2438		5,320	
PRODUCTION			7 7/8			5320		7,387	
Casing Strings									
Csg Des		Run Date		OD (in)	Wt/Len (lb/ft)	Grade	Top, MD (ftKB)	MD (ftKB)	
Surface		2/11/2008		8 5/8	24.00	J-55	14.0	525.0	
Production		2/15/2008		4 1/2	11.60	M-80	14.1	7,370.0	
Cement									
Des				Start Date		Top (ftKB)		Btm (ftKB)	
Surface Casing Cement				2/12/2008		14.0		525.0	
Production Casing Cement				2/15/2008		1,980.0		7,370.0	
P&A Courtesy Plug				12/13/2019		2,000.0		2,500.0	
P&A Shoe Plug				12/13/2019		329.0		780.0	
P&A Shoe Plug				12/13/2019		451.0		780.0	
P&A Surface Plug				12/16/2019		14.0		451.0	
P&A Surface Plug				12/16/2019		14.0		301.0	
Zone Statuses									
Zone Name	Status Date	Status	Fluid Type	Job			Prod Method		
NIOBRARA	2/5/2010	PR	Water	PLUG AND ABANDON, 12/9/2019 12:00			Flowing		
NIOBRARA	12/11/2019	P&A	Water				Flowing		
CODELL	2/5/2010	PR		PLUG AND ABANDON, 12/9/2019 12:00					
CODELL	12/11/2019	P&A	Flowing						
NIOBRARA	8/10/2017	PR				PLUG AND ABANDON, 12/9/2019 12:00			
NIOBRARA	12/11/2019	P&A	Flowing						
CODELL	2/5/2010	PR				Water	PLUG AND ABANDON, 12/9/2019 12:00		
CODELL	12/11/2019	P&A							
Perforation Data									
Linked Zone		Bnch/Stg	Entered Shot Total	Top (ftKB)		Btm (ftKB)		Date	
NIOBRARA, ORIGINAL HOLE NIOBRARA, ORIGINAL HOLE CODELL, ORIGINAL HOLE		A	4	300.00		301.00		12/16/2019	
			1	780.00		780.00		12/13/2019	
			64	6,935.00		6,951.00		3/31/2008	
			64	7,012.00		7,028.00		3/31/2008	
			52	7,223.00		7,236.00		3/4/2008	
Stimulation Intervals									
Zone			Start Date		Top (ftKB)		Btm (ftKB)		
NIOBRARA, ORIGINAL HOLE			3/31/2008		6,935.0		7,028.0		
CODELL, ORIGINAL HOLE			3/31/2008		7,223.0		7,236.0		
Other In Hole									
Run Date	Des			Make		OD (in)	Top (ftKB)	Btm (ftKB)	
12/12/2019	Cast Iron Bridge Plug w/ 2 SX Cement					4	6,859.0	6,886.0	
12/12/2019	Cast Iron Bridge Plug w/ 2 SX Cement					4	4,115.0	4,142.0	
Logs									
Date		Type				Top, MD (ftKB)		Btm, MD (ftKB)	
2/15/2008		Caliper/Comp. Density/Neutron/GR/SP/ML				2,650.0		7,365.0	
2/15/2008		DIL/GR/SP/Caliper				543.0		7,385.0	
3/4/2008		CBL/CCL/GR				1,860.0		7,338.0	
12/16/2019		RADIAL CEMENT				14.0		451.0	

Well Name: SCHMIDT G19-23

VERTICAL, ORIGINAL HOLE, 9/1/2020 10:45:08 AM

Plug Back Total Depths

