

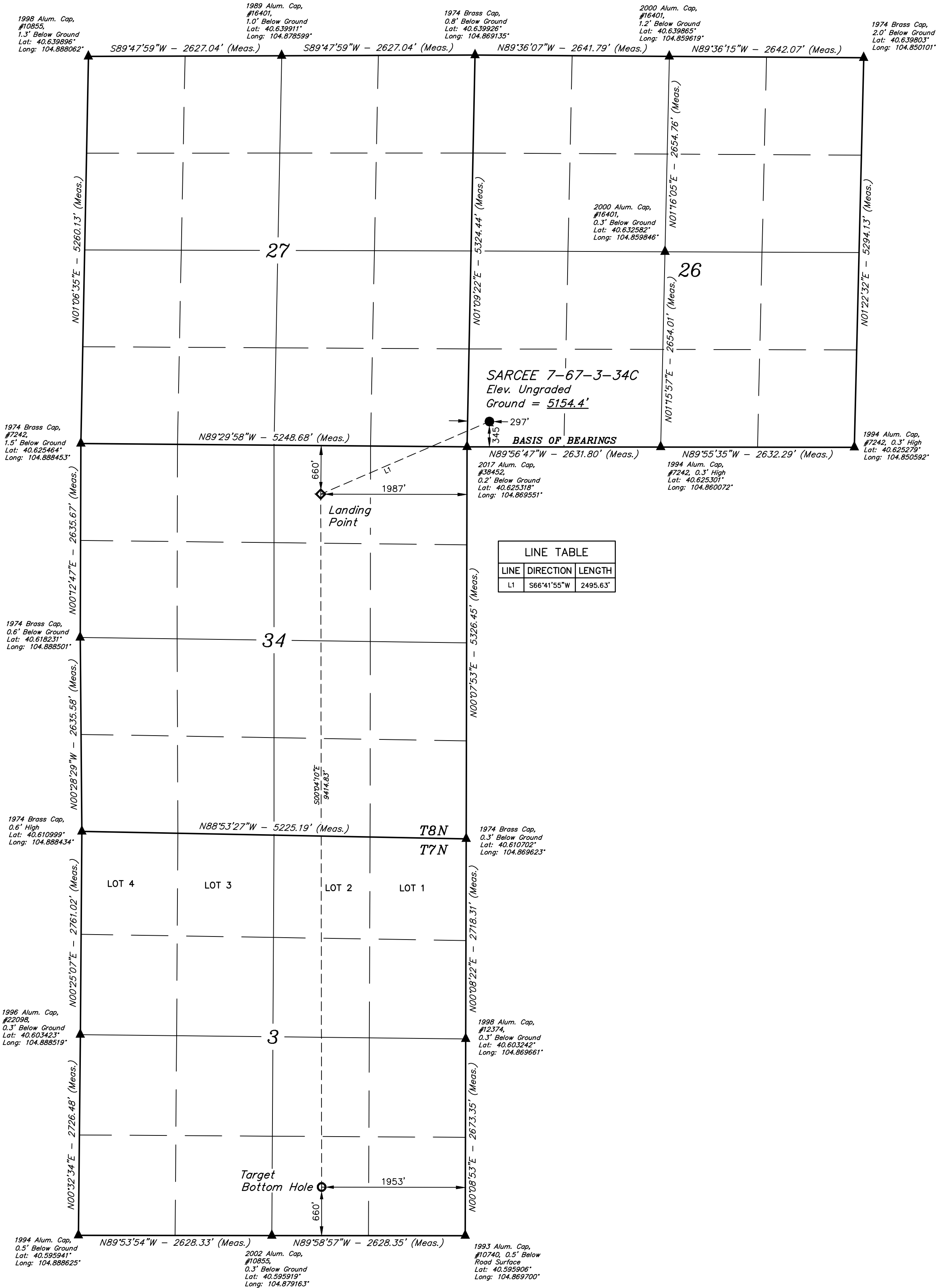
LEGEND:

- = PROPOSED WELLHEAD.  
◆ = LANDING POINT.  
○ = TARGET BOTTOM HOLE.  
▲ = SECTION CORNERS LOCATED. (NAD 83)

NOTE:

Distances referenced on plat to section lines are perpendicular.

T8N, R67W, 6th P.M.



CERTIFICATE OF RECORD  
THIS IS TO CERTIFY THAT THE ABOVE DESCRIBED SURVEY WAS MADE IN ACCORDANCE WITH THE RULES AND REGULATIONS OF THE BOARD OF LAND SURVEYORS OF THE STATE OF COLORADO, AND THAT THE SAME ARE TRUE AND CORRECT TO THE BEST OF MY KNOWLEDGE AND BELIEF.

REGISTERED LAND SURVEYOR  
REGISTRATION NO. 28285  
STATE OF COLORADO  
20

ENERPLUS RESOURCES (USA) CORPORATION

SARCEE 7-67-3-34C  
SW 1/4 SW 1/4, SECTION 26, T8N, R67W, 6th P.M.  
WELD COUNTY, COLORADO

SURVEYED BY	ALLEN SHAFFETT	02-13-20	SCALE
DRAWN BY	CJWIE	04-27-20	1" = 1000'

WELL LOCATION PLAT

BASIS OF ELEVATION  
OPUS SOLUTION GENERATED NAVD 88



UELS, LLC  
Corporate Office \* 85 South 200 East  
Vernal, UT 84078 \* (435) 789-1017