

Nov-6-2018
EMM-2015 Dip: 66.28 deg Field: 51926.9 nT
Lat: N39 56 40.5024 Long: W104 48 16.6932 Elev: 5047.00 ft
Magnetic North is 8.15 deg East of TRUE North
To correct azimuth from Magnetic to TRUE add 8.15 deg

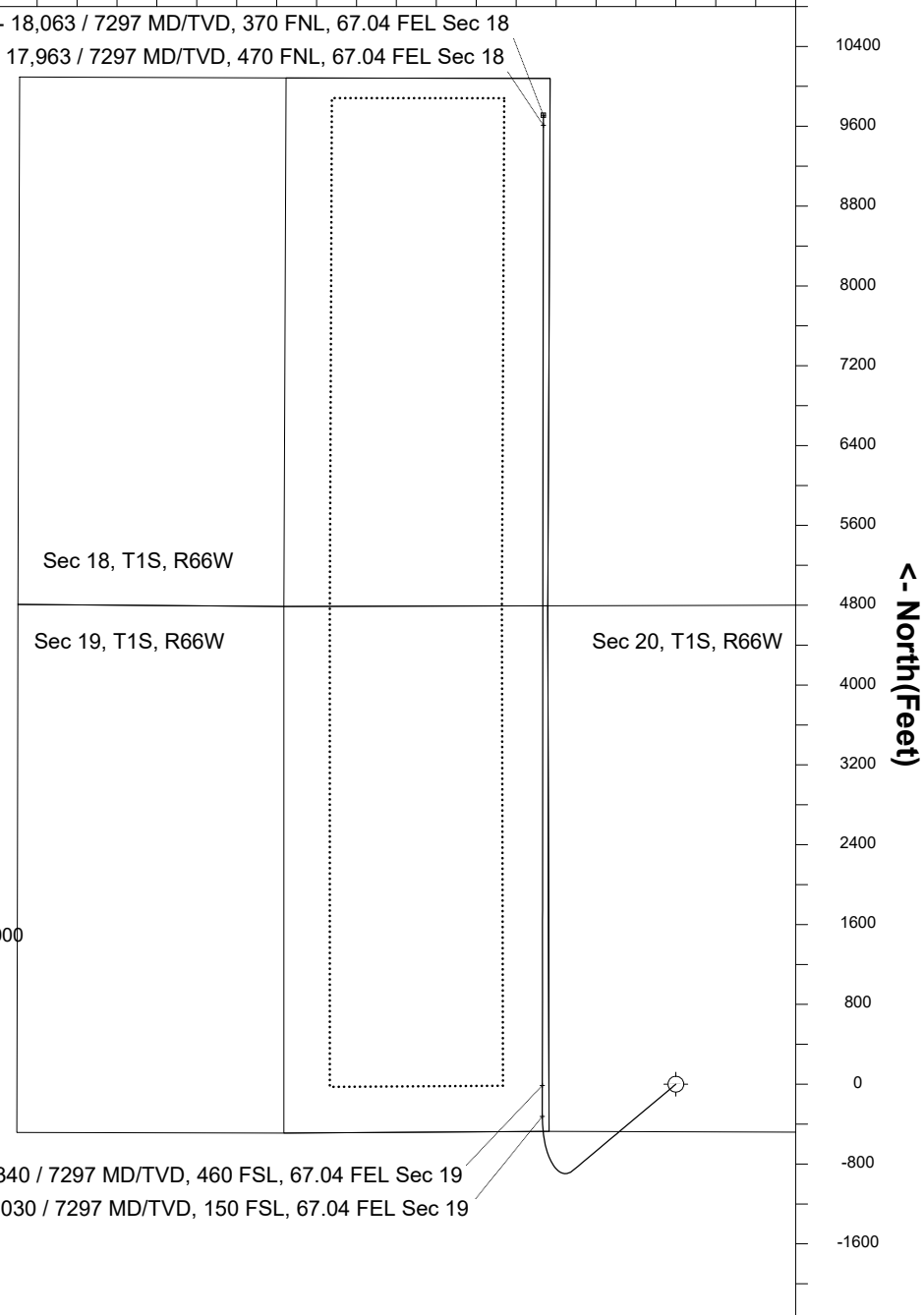
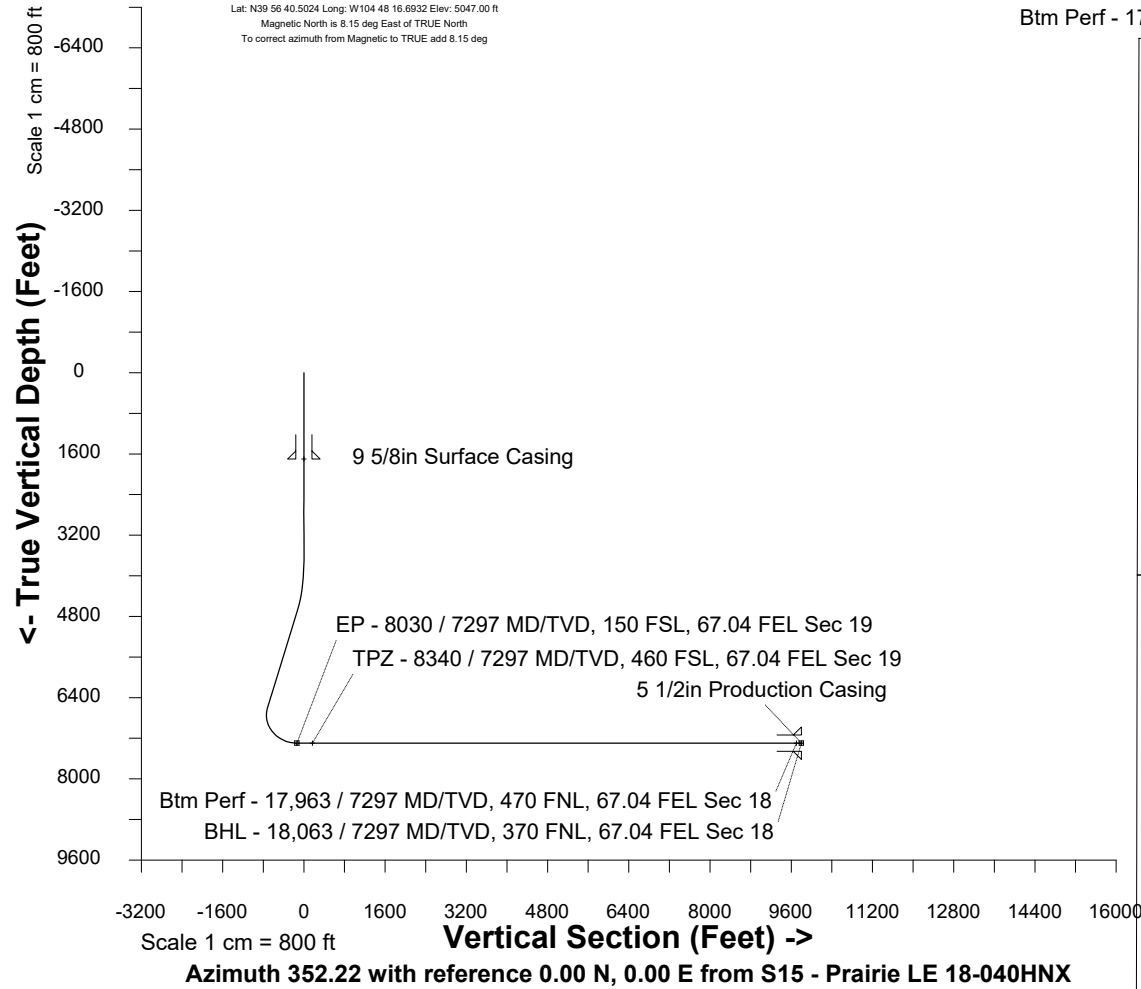
Great Western Operating Company, LLC

Location	Colorado	Slot	S15 - Prairie LE 18-040HNX
Field	Wattenburg	Well	Prairie LE 18-040HNX
Installation	Prairie	Wellbore	S15 - Prairie LE 18-040HNX (PWB)

Scale 1 cm = 400 ft

East (Feet) ->

Created by mmount
Date plotted 20-Dec-2019
Plot reference is S15 - Prairie LE 18-040HNX (PWB).
Ref wellpath is S15 - Prairie LE 18-040HNX (PWP#1).
Coordinates are in Feet reference S15 - Prairie LE 18-040HNX.
True Vertical Depths are reference Rig Datum.
Measured Depths are reference Rig Datum.
Rig Datum: Planned Datum #1
Rig Datum to Mean Sea Level: 5067.00 ft.
Plot North is aligned to TRUE North.



WELL PROFILE DATA

Point	MD	Inc	Azi	TVD	North	East	deg/100ft	
Tie on	0.00	0.00	0.00	0.00	S 0.00	W 0.00		
KOP	3759.00	0.00	230.01	3759.00	S 0.00	W 0.00	0.00	
Target EP - 8...Sec 19	8029.64	90.00	0.06	7297.00	S 323.08	W 1338.04	10.00	
Target TPZ - 8.Sec 19	8339.64	90.00	0.06	7297.00	S 13.08	W 1338.04	0.00	
Target BTM PERF.. 18	17962.75	90.00	0.06	7297.00	N 9610.02	W 1327.41	0.00	
T.D. & Target BHL... 18	18062.75	90.00	0.06	7297.00	N 9710.02	W 1327.41	0.00	